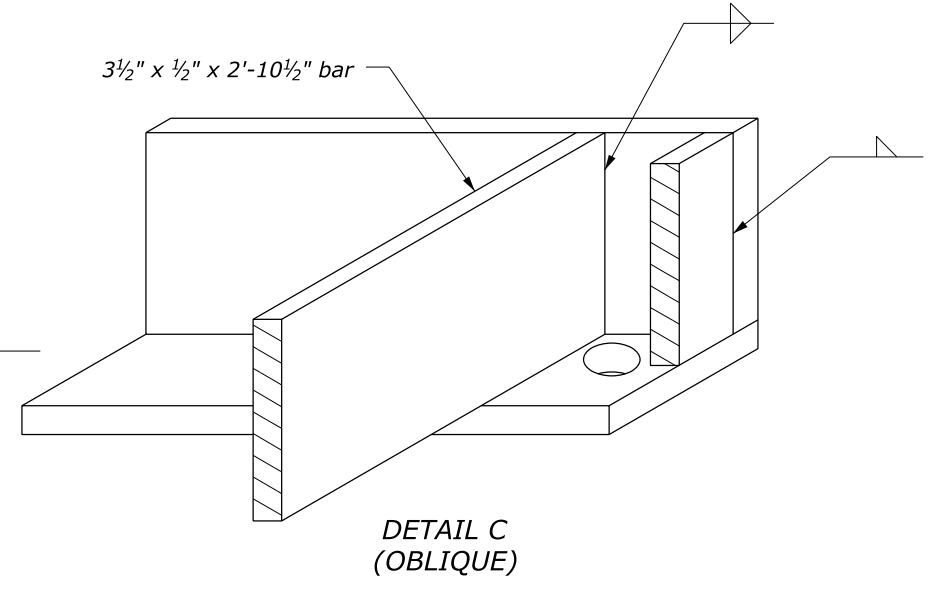
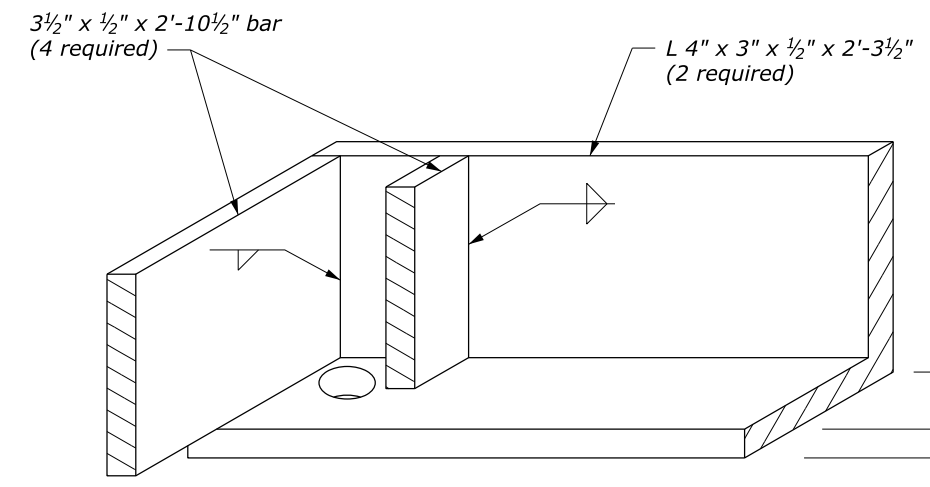
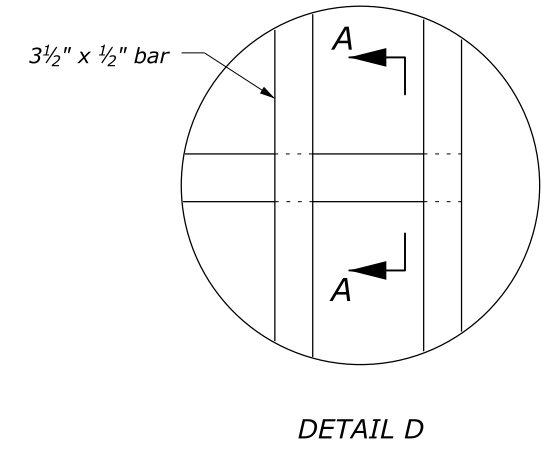
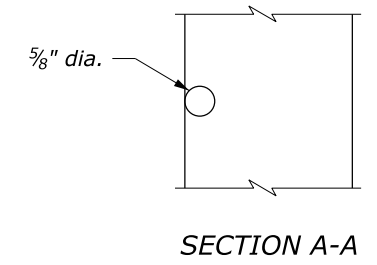
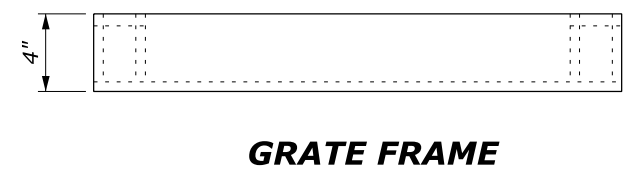


- NOTE:**
- Hot dip galvanize all metal parts for frame and grate after fabrication.
 - Fabricate frame and grate from structural steel.
 - Furnish four 3/4" x 8" anchor bolts with nuts to attach frame to inlet.
 - Cut holes in 3 1/2" x 1/2" bar as required to place 5/8 inch diameter rods.
 - Spot weld 5/8 inch diameter rods for frame and grate to 3 1/2" x 1/2" bars.



U.S. DEPARTMENT OF TRANSPORTATION FEDERAL HIGHWAY ADMINISTRATION FEDERAL LANDS HIGHWAY	
U.S. CUSTOMARY STANDARD	
FRAME AND GRATE TYPE 5A	
STANDARD APPROVED FOR USE 6/2005	STANDARD
REVISED:	604-6

NO SCALE