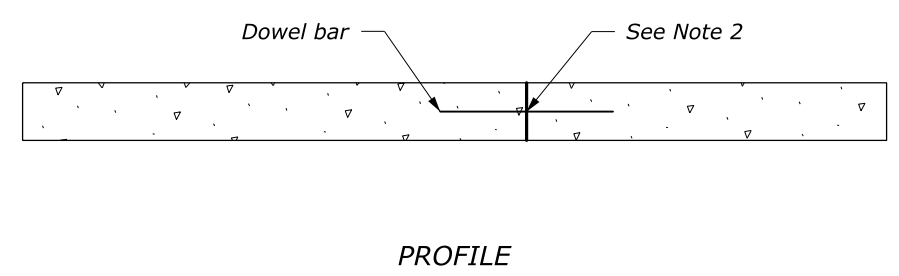
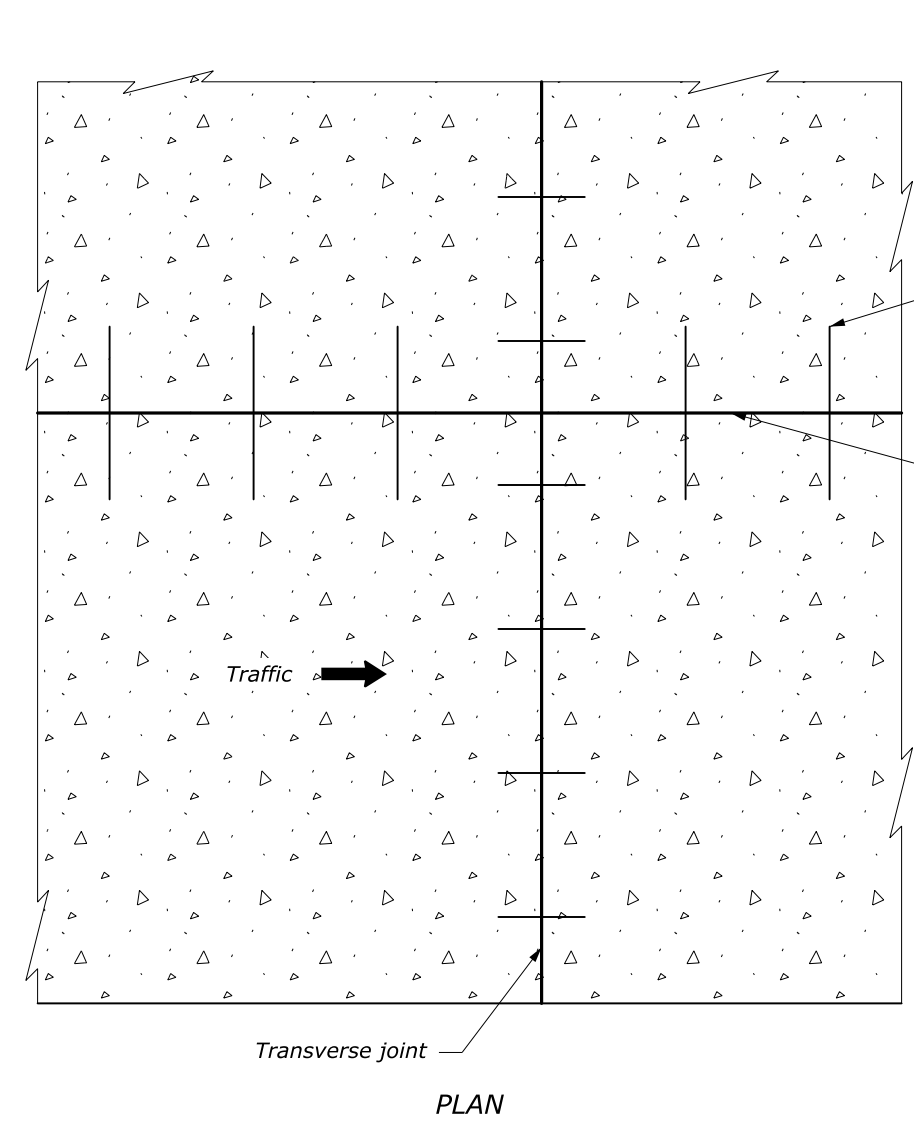
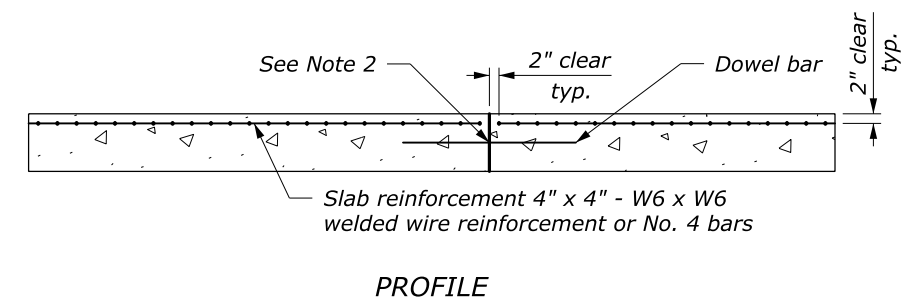
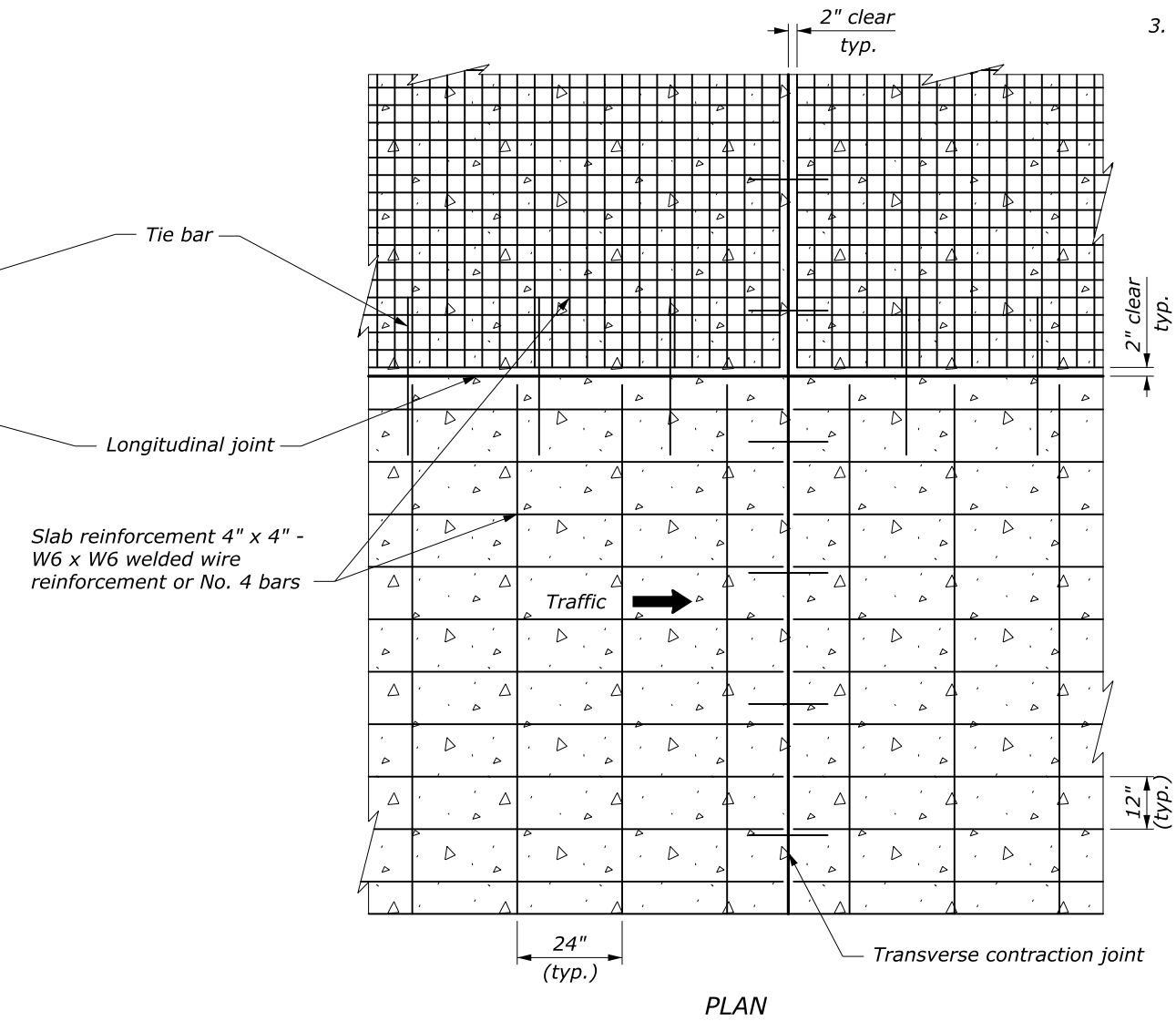


**NOTE:**

1. Provide the same type of dowel assemblies and tie bars for joints in plain portland cement concrete pavement as shown for joints in reinforced pavement.
2. See Standard 501-2 for joint and joint sealing details.
3. Lap longitudinal and transverse reinforcement not less than 15 inches.



**PLAIN MINOR CONCRETE PAVEMENT**



**REINFORCED MINOR CONCRETE PAVEMENT**

PAVEMENT THICKNESS (in)	TRANSVERSE JOINT SPACING (ft)
$T < 6$	10
$6 \leq T < 12$	15

NO SCALE

U.S. DEPARTMENT OF TRANSPORTATION FEDERAL HIGHWAY ADMINISTRATION FEDERAL LANDS HIGHWAY	
U.S. CUSTOMARY STANDARD	
<b>MINOR CONCRETE PAVEMENT</b>	
STANDARD APPROVED FOR USE --/----	STANDARD
REVISED: 9/2016	501-1