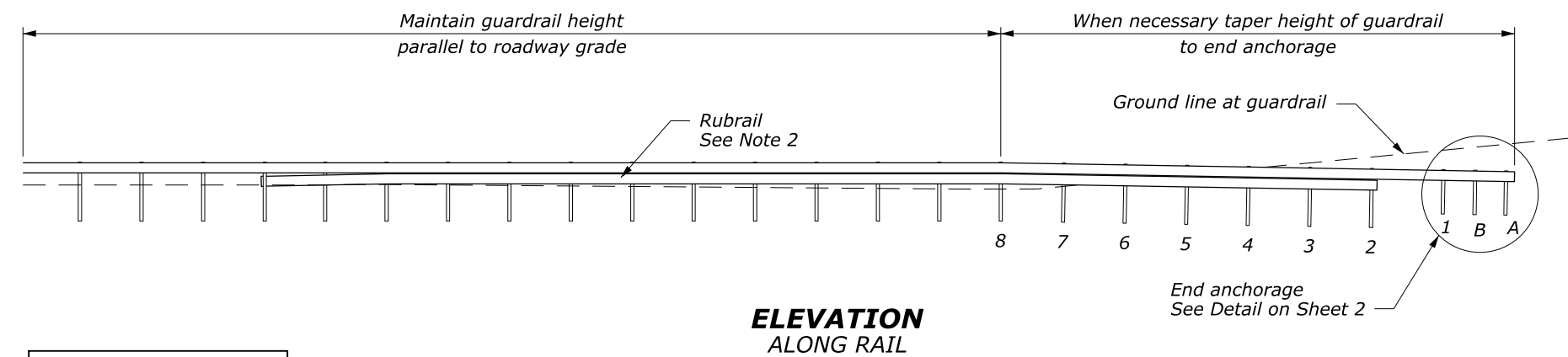
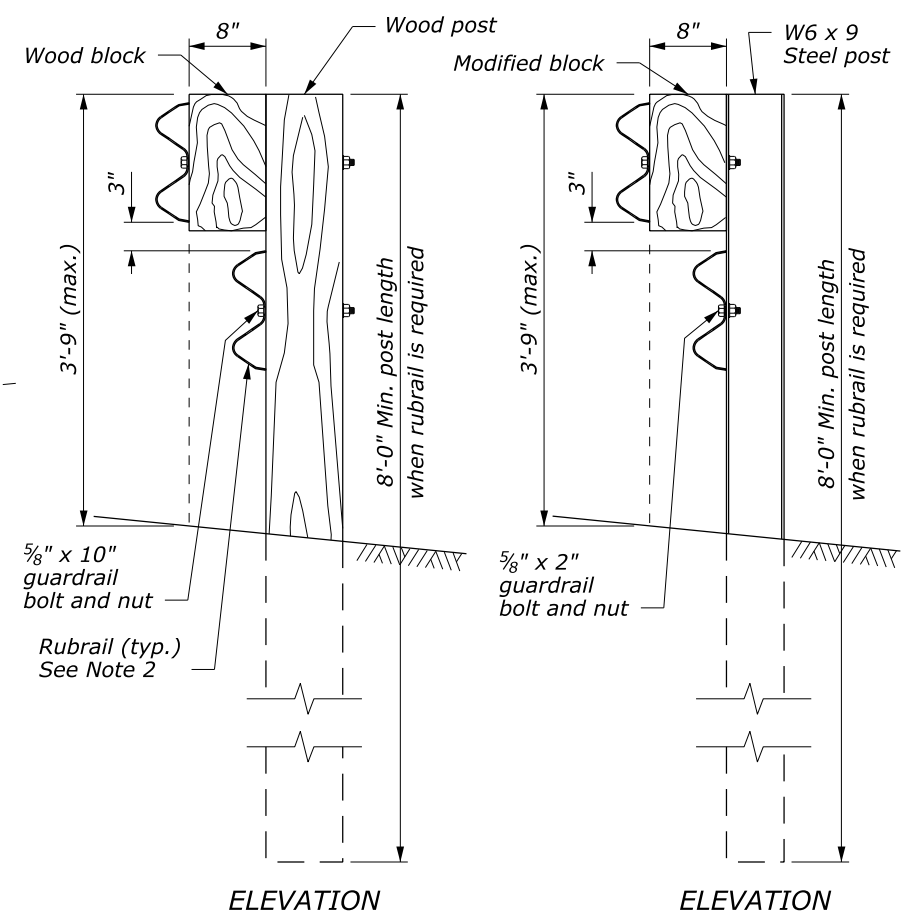


**NOTE:**

- See Standards 617-10 and 617-11 for other details.
- Hold the height of the W-beam rail constant in relation to the roadway shoulder elevation until the barrier crosses the ditch bottom. Add the rubrail when the distance from the ground to the bottom of the W-beam exceeds 18".



**ELEVATION ALONG RAIL**

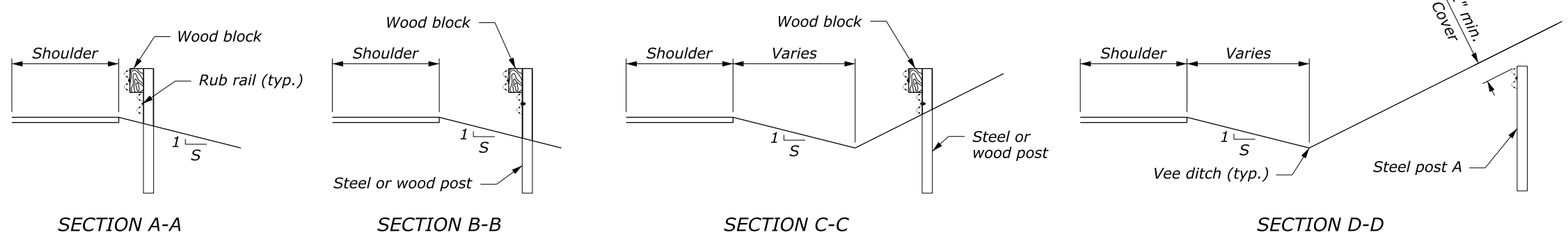


**WOOD POST AND BLOCK DETAIL**

**STEEL POST AND BLOCK DETAIL**

GUARDRAIL FLARE	
DESIGN SPEED MPH	FLARE
70	15
60	14
55	12
50	11
45	10
< 35	8

POST OFFSETS FROM VEE DITCH BOTTOM	
POST	DISTANCE
A	8'
#2	5'
#4	3'
#8	0



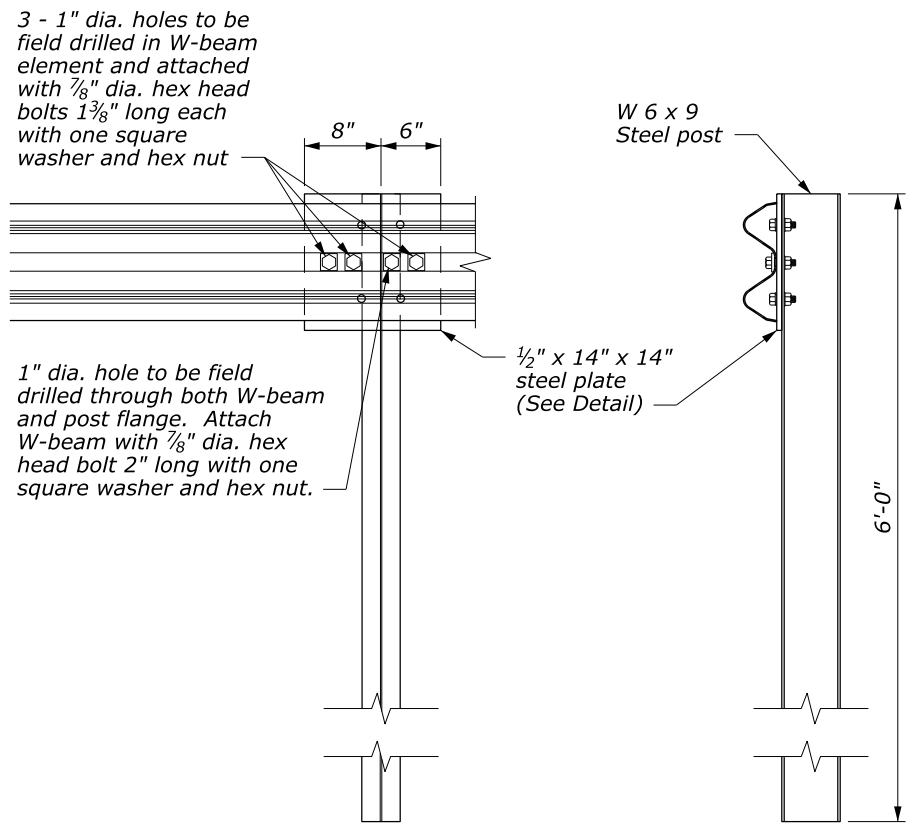
NO SCALE

U.S. DEPARTMENT OF TRANSPORTATION  
FEDERAL HIGHWAY ADMINISTRATION  
FEDERAL LANDS HIGHWAY

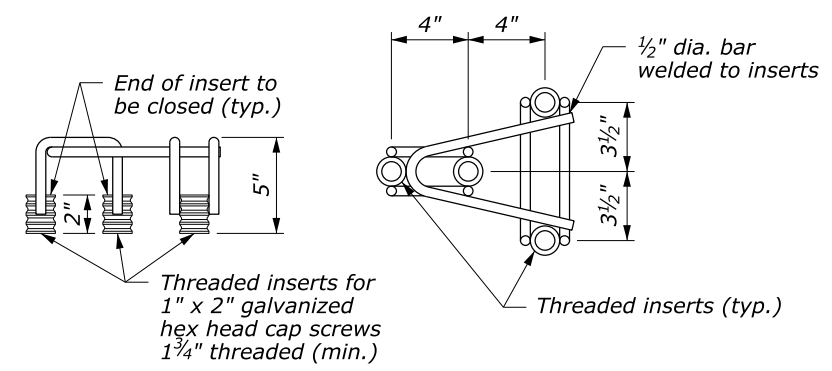
U.S. CUSTOMARY STANDARD  
**G4 W-BEAM GUARDRAIL  
BACK SLOPE ANCHOR TERMINAL  
TYPE G4-BAT**  
Sheet 1 of 2

STANDARD APPROVED FOR USE 1/1994	STANDARD
REVISED: 4/1994 6/2005	617-17
DRAFT: 5/2014	

4 September 2014 11:01 AM c:\myfiles\pw\_production\107577\FLH.dgnlib [Standard\_US-New]

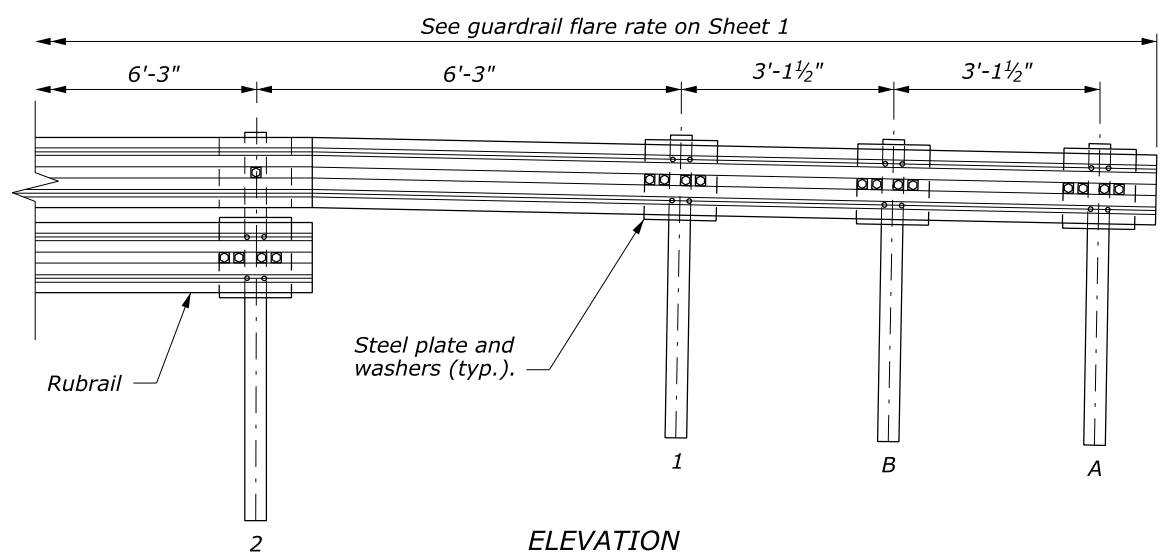


**SPECIAL RAIL TO POST CONNECTION AT POSTS A, B, AND 1**

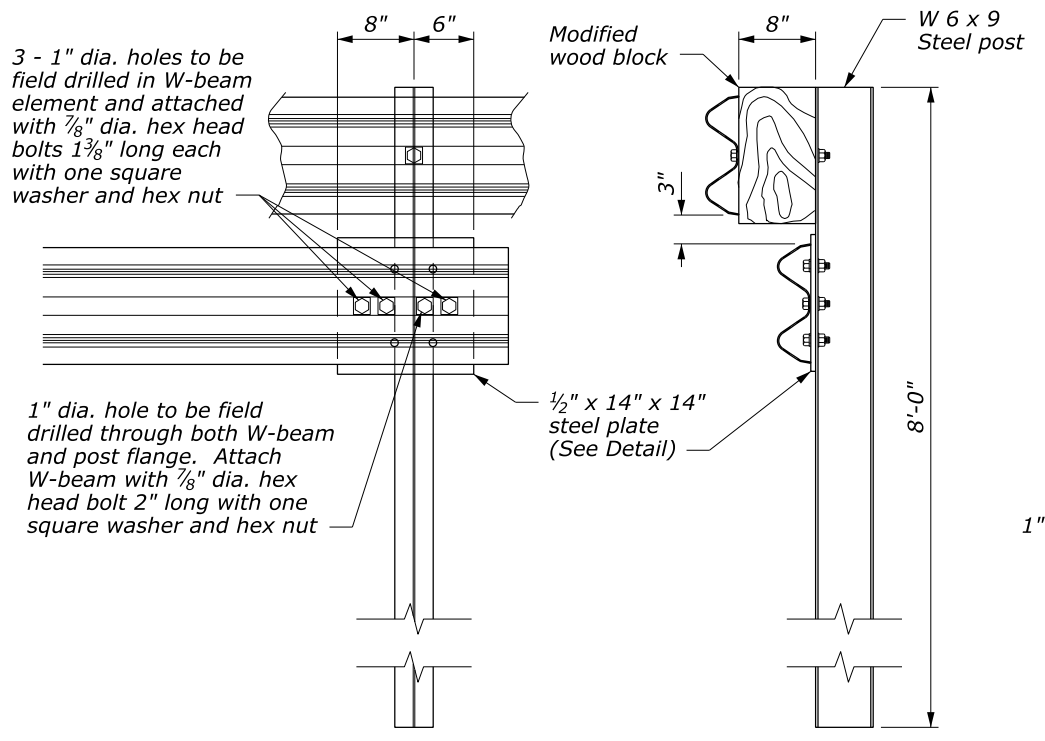


**FRAMEWORK FOR THREADED INSERTS**

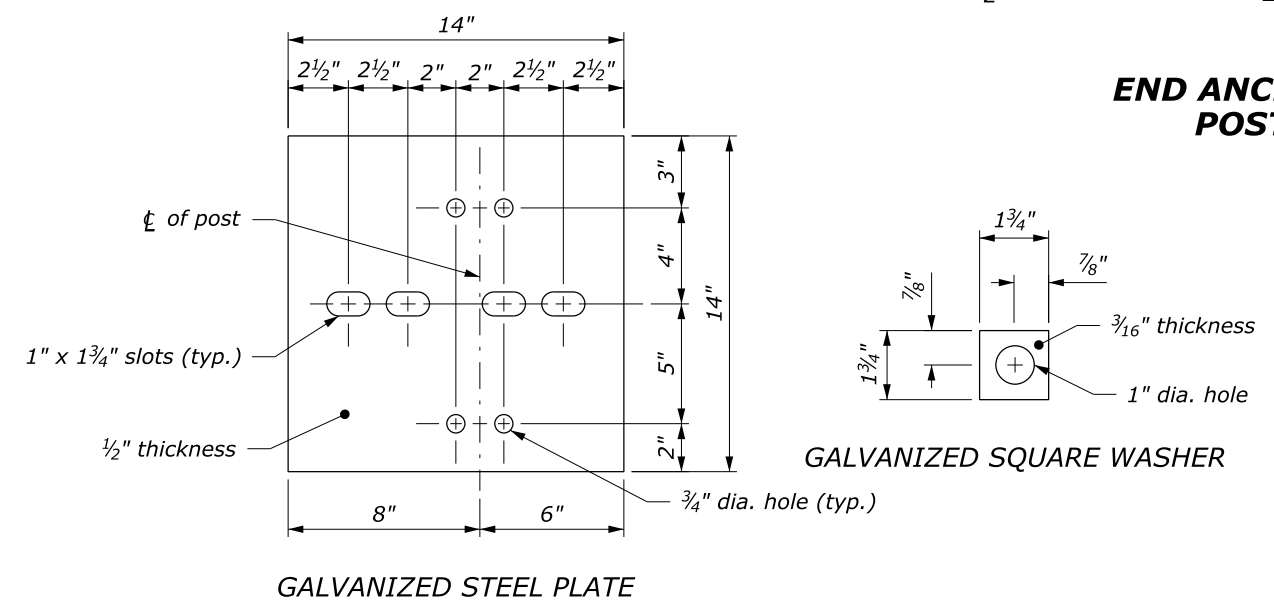
- NOTE:**
1. See Standard 617-10 and 617-11 for block detail and attachment.
  2. See Sheet 1 of 2 for terminal layout.
  3. For posts #3 and higher, match post material of adjacent guardrail run, unless otherwise noted.
  4. Use zinc rich paint to coat field drilled holes.



**END ANCHORAGE DETAIL POSTS A, B, 1, 2**



**SPECIAL RUBRAIL TO POST CONNECTION AT POST 2**



**GALVANIZED STEEL PLATE AND WASHER**

NO SCALE

U.S. DEPARTMENT OF TRANSPORTATION FEDERAL HIGHWAY ADMINISTRATION FEDERAL LANDS HIGHWAY	
U.S. CUSTOMARY STANDARD <b>G4 W-BEAM GUARDRAIL BACK SLOPE ANCHOR TERMINAL TYPE G4-BAT</b> Sheet 2 of 2	
STANDARD APPROVED FOR USE 1/1994	STANDARD
REVISED: 4/1994 6/2005 DRAFT: 5/2014	617-17

4 September 2014 11:01 AM c:\myfiles\pw\_production\10107577\FH.dgnlib [Standard\_US-New]