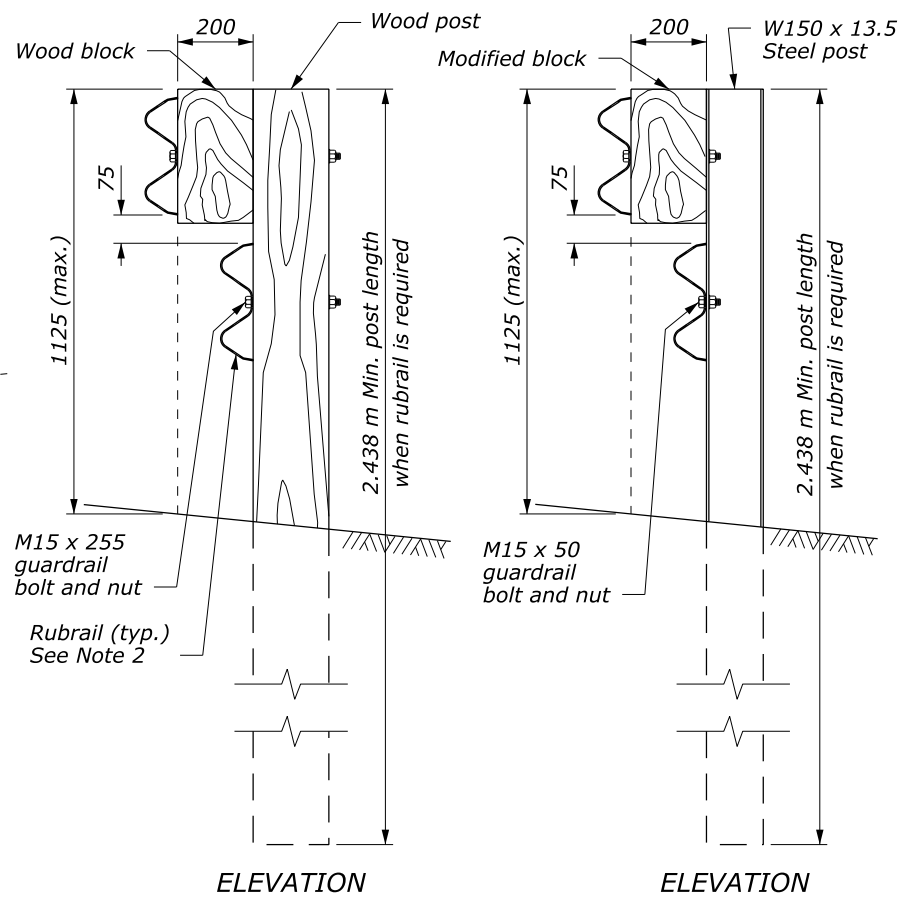
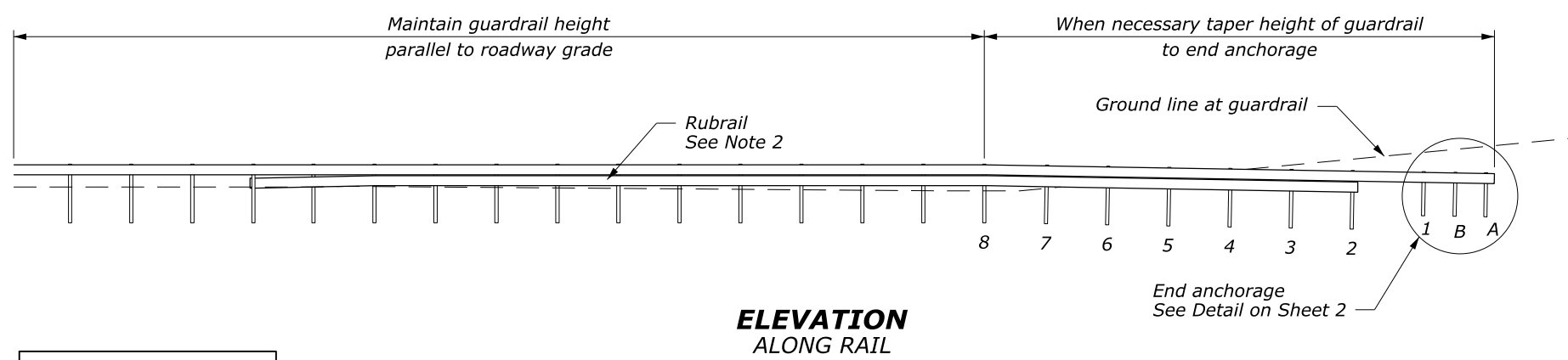
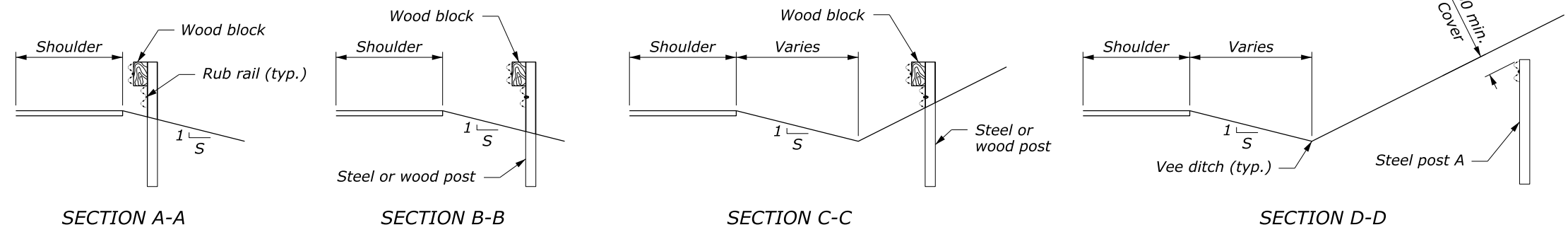


- NOTE:**
1. See Standards M617-10 and M617-11 for other details.
 2. Hold the height of the W-beam rail constant in relation to the roadway shoulder elevation until the barrier crosses the ditch bottom. Add the rubrail when the distance from the ground to the bottom of the W-beam exceeds 457 mm.
 3. Dimensions without units are millimeters.



GUARDRAIL FLARE	
DESIGN SPEED km/h	FLARE
110	15
100	14
90	12
80	11
70	10
< 60	8

POST OFFSETS FROM VEE DITCH BOTTOM	
POST	DISTANCE
A	2400
#2	1500
#4	900
#8	0



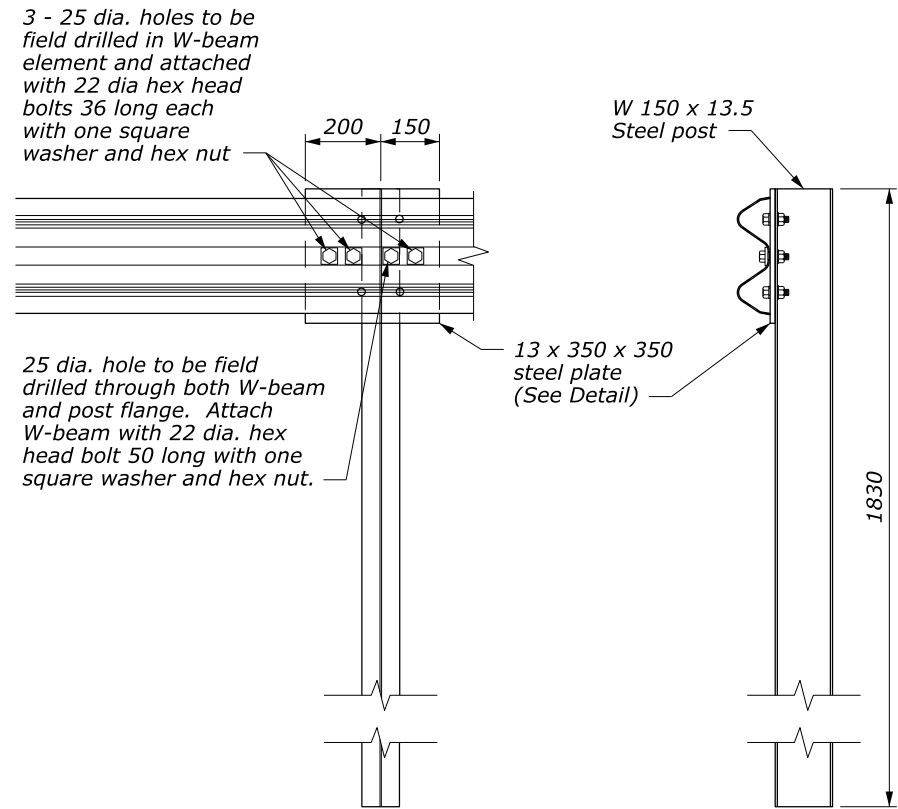
U.S. DEPARTMENT OF TRANSPORTATION
FEDERAL HIGHWAY ADMINISTRATION
FEDERAL LANDS HIGHWAY

METRIC STANDARD
**G4 W-BEAM GUARDRAIL
BACK SLOPE ANCHOR TERMINAL
TYPE G4-BAT**
Sheet 1 of 2

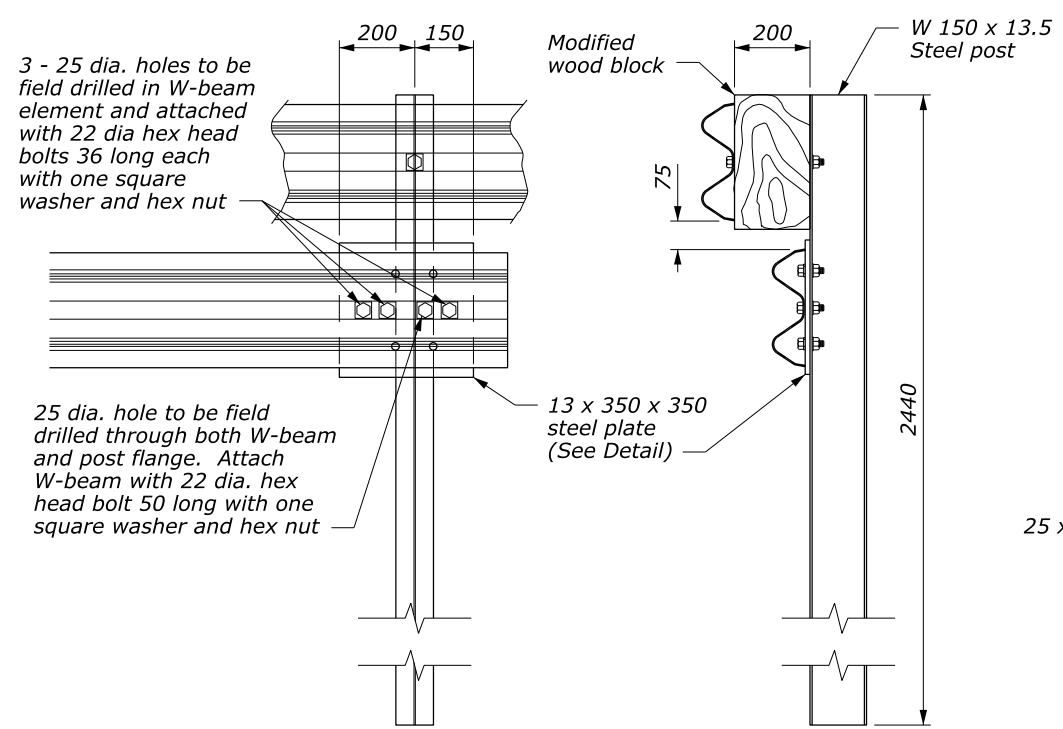
STANDARD APPROVED FOR USE 3/1996
REVISED: 6/1997 6/2005
DRAFT: 5/2014

STANDARD
M617-17

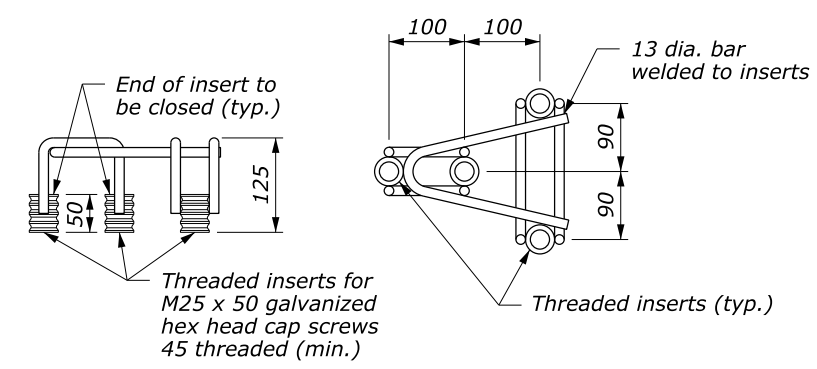
NO SCALE



SPECIAL RAIL TO POST CONNECTION AT POSTS A, B, AND 1



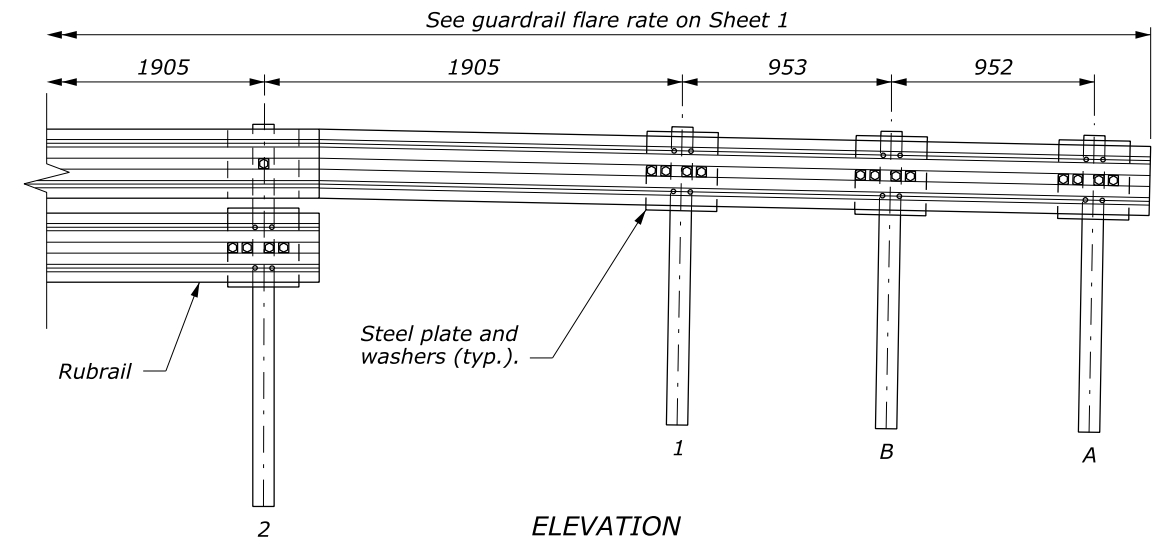
SPECIAL RUBRAIL TO POST CONNECTION AT POST 2



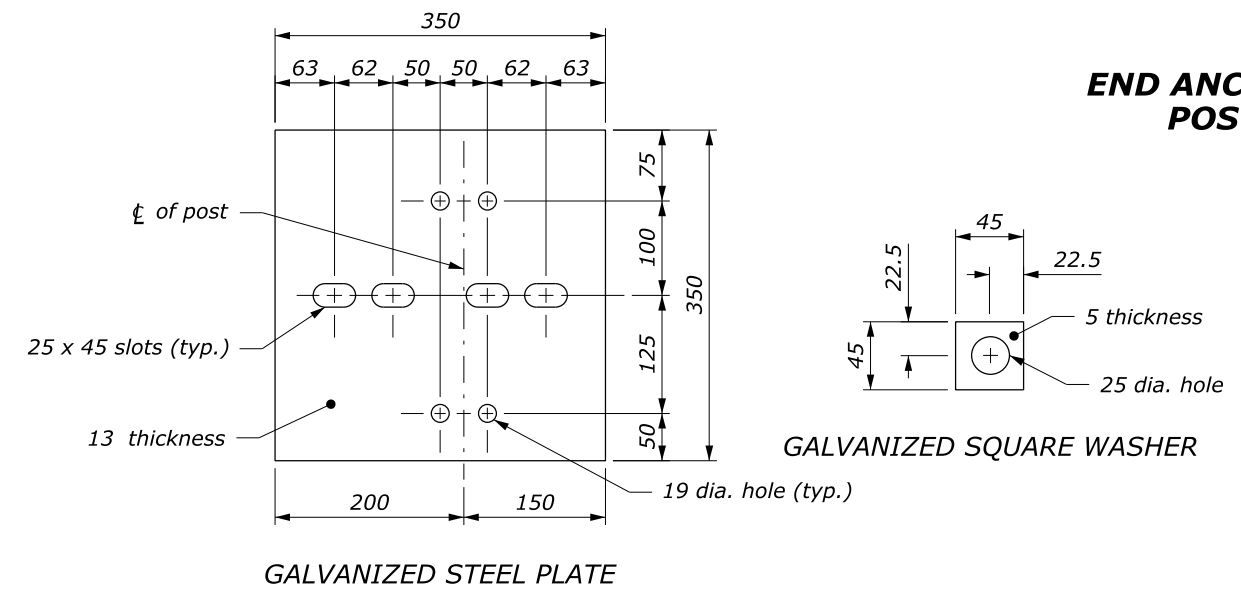
FRAMEWORK FOR THREADED INSERTS

NOTE:

1. See Standard M617-10 and M617-11 for block detail and attachment.
2. See Sheet 1 of 2 for terminal layout.
3. For posts #3 and higher, match post material of adjacent guardrail run, unless otherwise noted.
4. Use zinc rich paint to coat field drilled holes.
5. Dimensions without units are millimeters.



END ANCHORAGE DETAIL POSTS A, B, 1, 2



NO SCALE

U.S. DEPARTMENT OF TRANSPORTATION FEDERAL HIGHWAY ADMINISTRATION FEDERAL LANDS HIGHWAY	
METRIC STANDARD G4 W-BEAM GUARDRAIL BACK SLOPE ANCHOR TERMINAL TYPE G4-BAT Sheet 2 of 2	
STANDARD APPROVED FOR USE 3/1996	STANDARD
REVISED: 6/1997 6/2005 DRAFT: 5/2014	M617-17