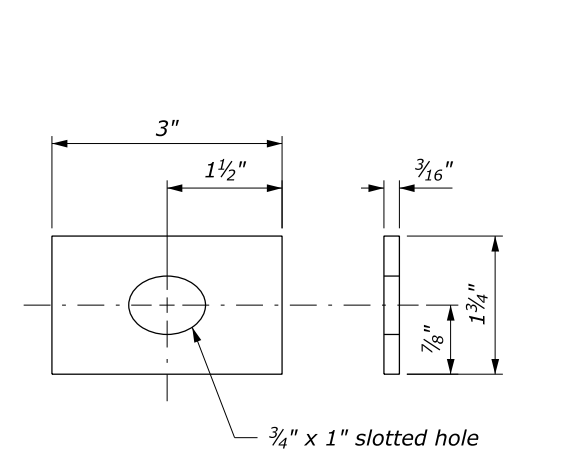
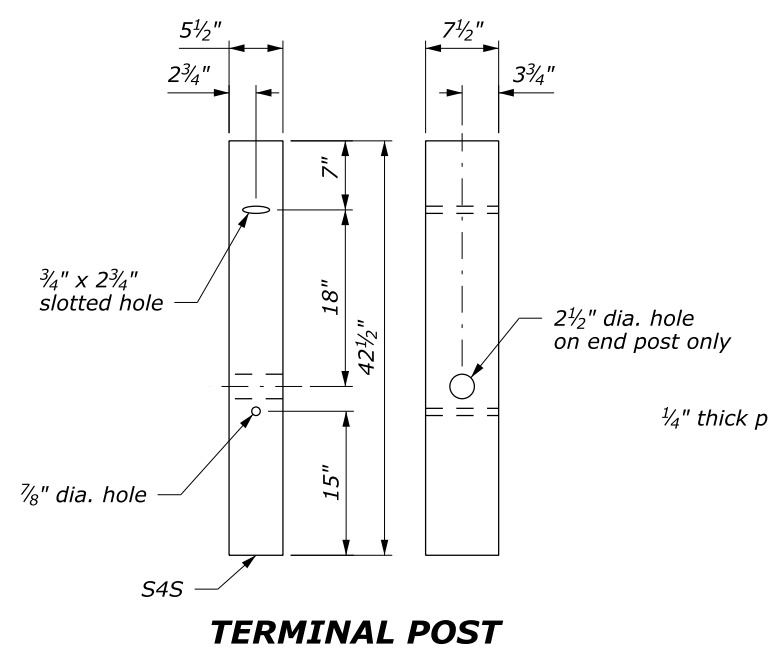


ANCHOR PLATE DETAILS FOR LST ANCHORAGE ASSEMBLY

NOTE:
 1. Dimensional tolerances not shown or implied are intended to be those consistent with the proper functioning of the part, including its appearance, and accepted manufacturing practices.

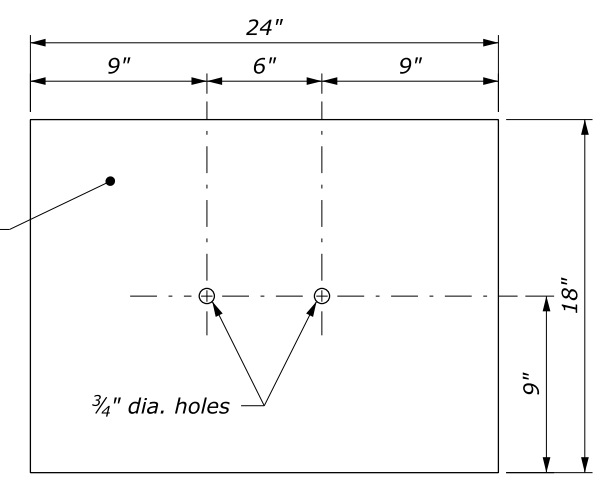


RECTANGULAR PLATE WASHER
 (Use to attach the section to the post of anchorage assembly)

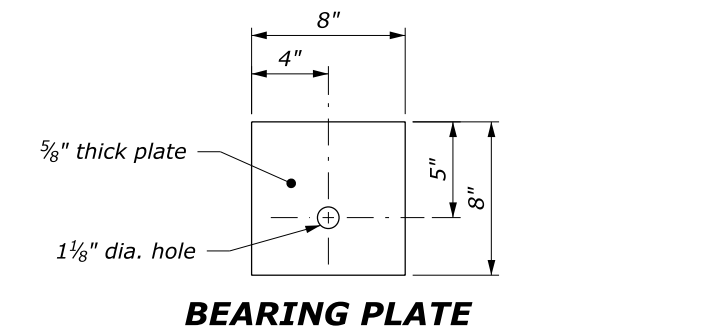


TERMINAL POST

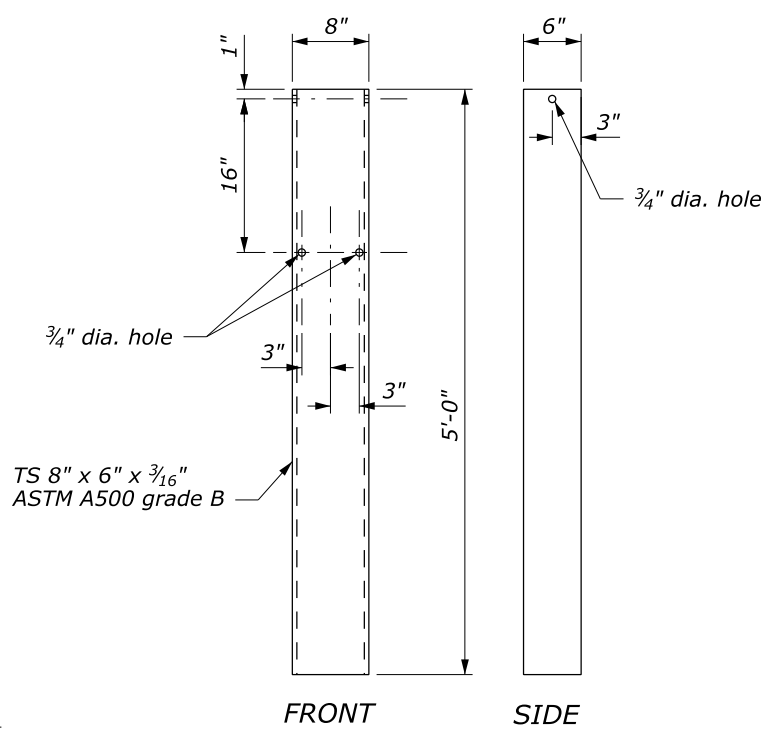
POST SLEEVE



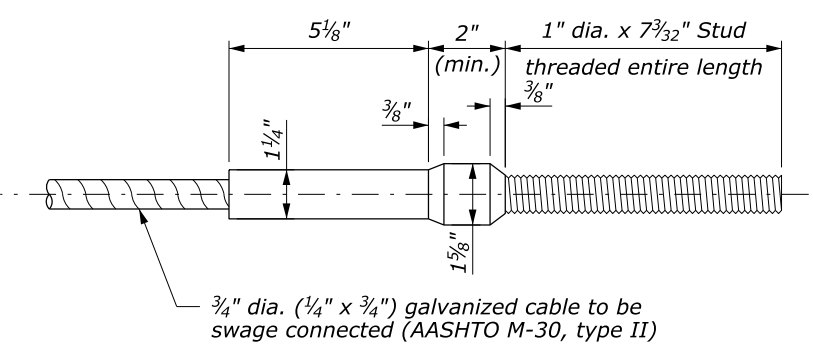
SOIL PLATE
 (2 REQUIRED)



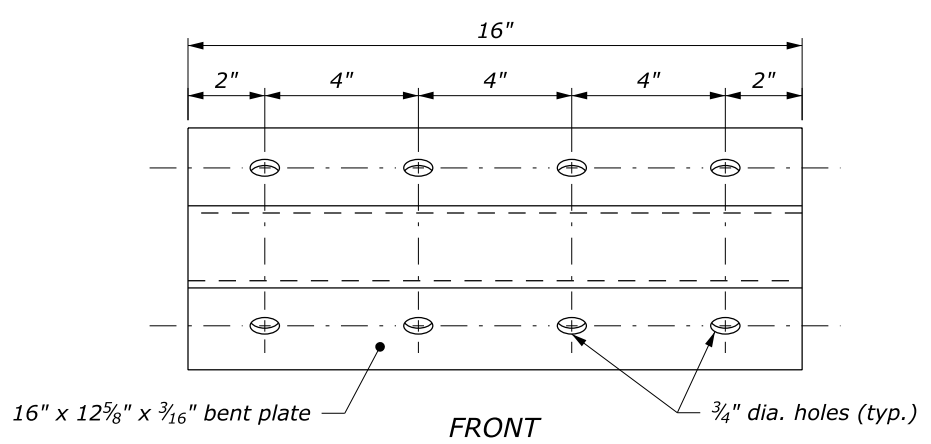
BEARING PLATE



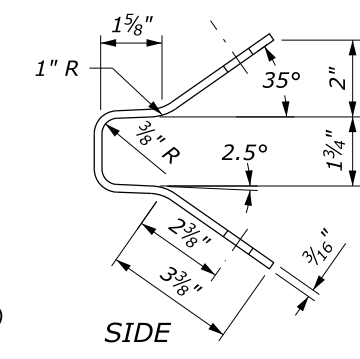
STEEL TUBE ANCHOR



CABLE ASSEMBLY
 (Standard swaged fitting and stud)



GUARDRAIL ANCHOR PLATE



NO SCALE

U.S. DEPARTMENT OF TRANSPORTATION FEDERAL HIGHWAY ADMINISTRATION FEDERAL LANDS HIGHWAY	
U.S. CUSTOMARY STANDARD	
G4 W-BEAM GUARDRAIL MELT, LST & CRT ANCHORAGE ASSEMBLY DETAILS	
STANDARD APPROVED FOR USE 1/1994	STANDARD
REVISED: 4/1994 6/2005	617-15
DRAFT: 5/2014	