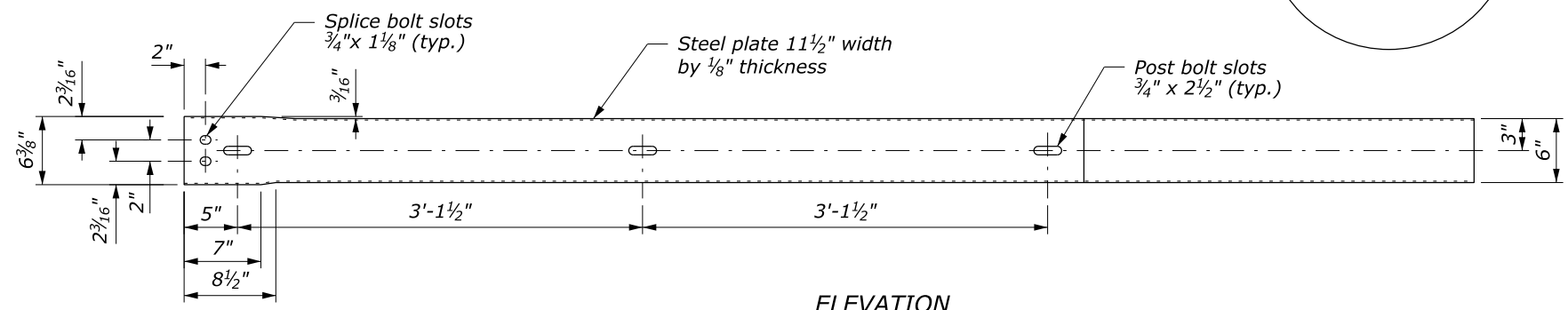
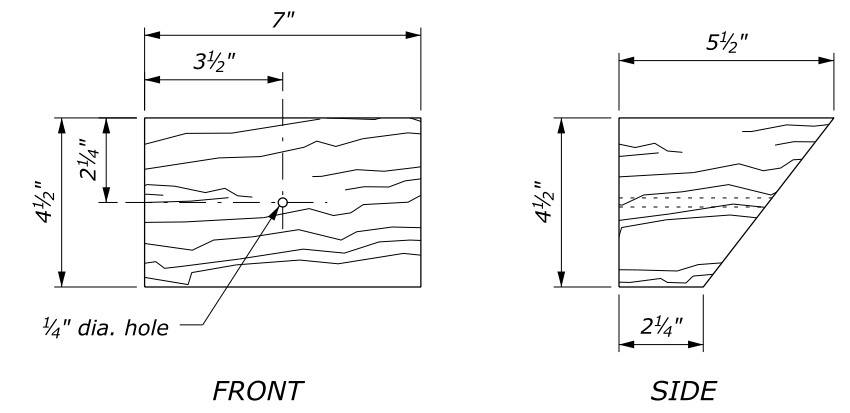


**NOTE:**

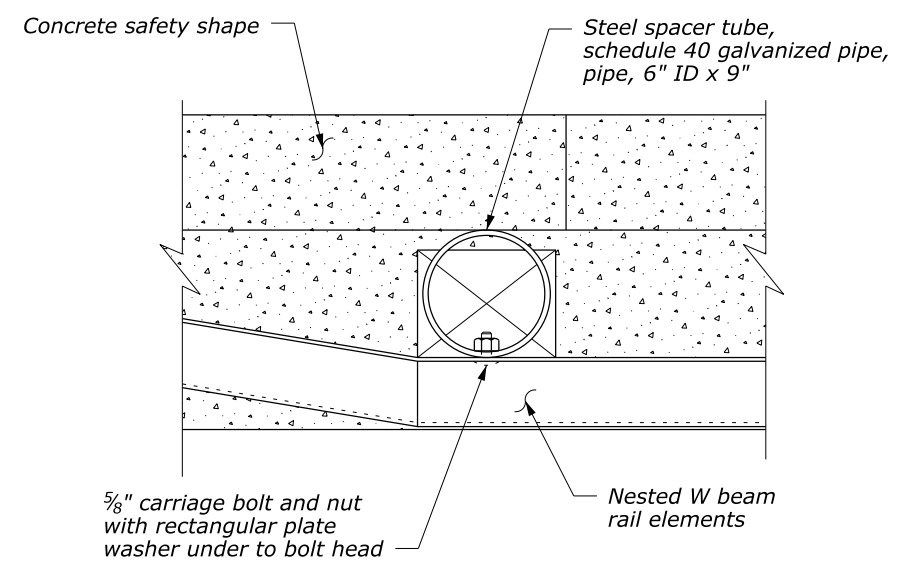
1. Attach rubrail end flush with sloped tow of safety shape. Shop fabricate the C6 x 8.2 rubrail end to be consistent with the slope of safety shape. Both clockwise and counterclockwise fabrications may be required.
2. Dimensional tolerances not shown or implied are intended to be those consistent with the proper functioning of the part, including its appearance, and accepted manufacturing practices.



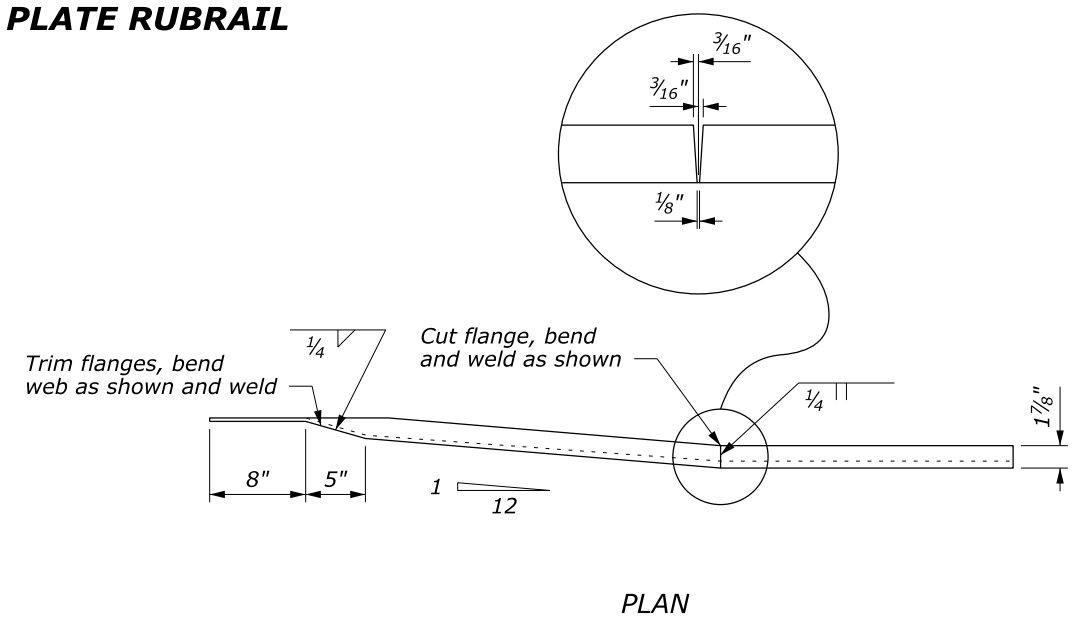
**ELEVATION  
BENT PLATE RUBRAIL**



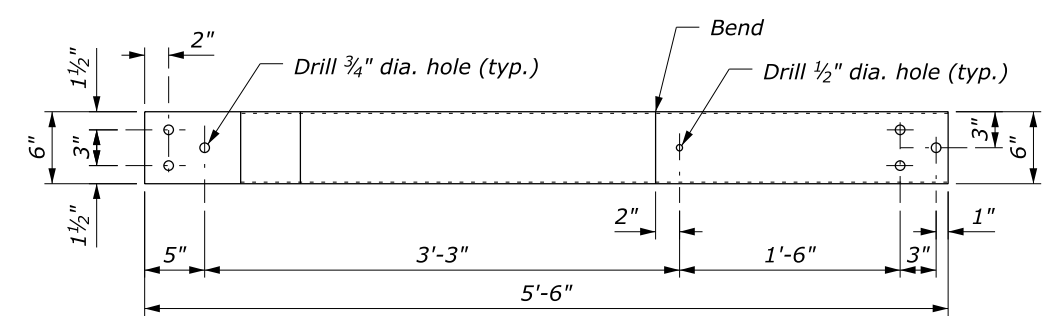
**WOOD BLOCKOUT FOR RUBRAIL  
ON CONCRETE SAFETY SHAPE**



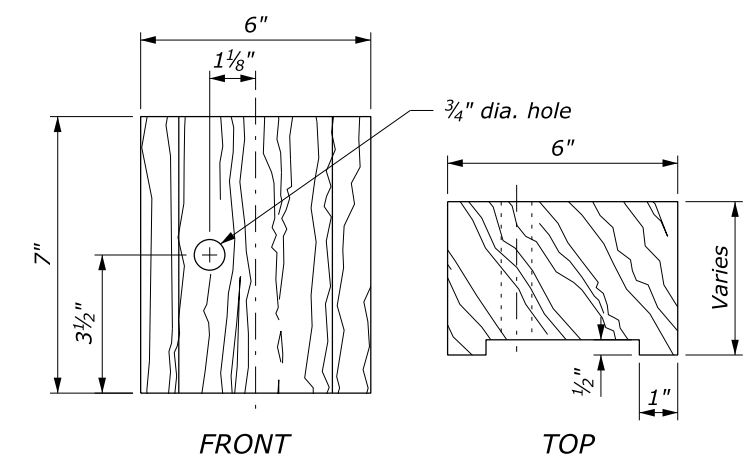
**STEEL SPACER BLOCK**



**PLAN  
C6X8.2 RUBRAIL**



**ELEVATION  
C6X8.2 RUBRAIL**



**WOOD BLOCKOUT FOR  
RUBRAIL ON STEEL POSTS**

NO SCALE

U.S. DEPARTMENT OF TRANSPORTATION FEDERAL HIGHWAY ADMINISTRATION FEDERAL LANDS HIGHWAY	
U.S. CUSTOMARY STANDARD	
<b>G4 BEAM GUARDRAIL CONNECTION TO STRUCTURE SAFETY SHAPE FACE RUBRAIL</b>	
STANDARD APPROVED FOR USE --/---	STANDARD
REVISED: DRAFT: 9/2013	617-29