

ANALYSIS EXAMPLES

Populations, Employment, Services, and
Gaps



Connectivity

- Origins
 - Typically residential areas
- Destinations
 - Service and resource locations
- Service areas
 - Adjacent infrastructure and route coverage

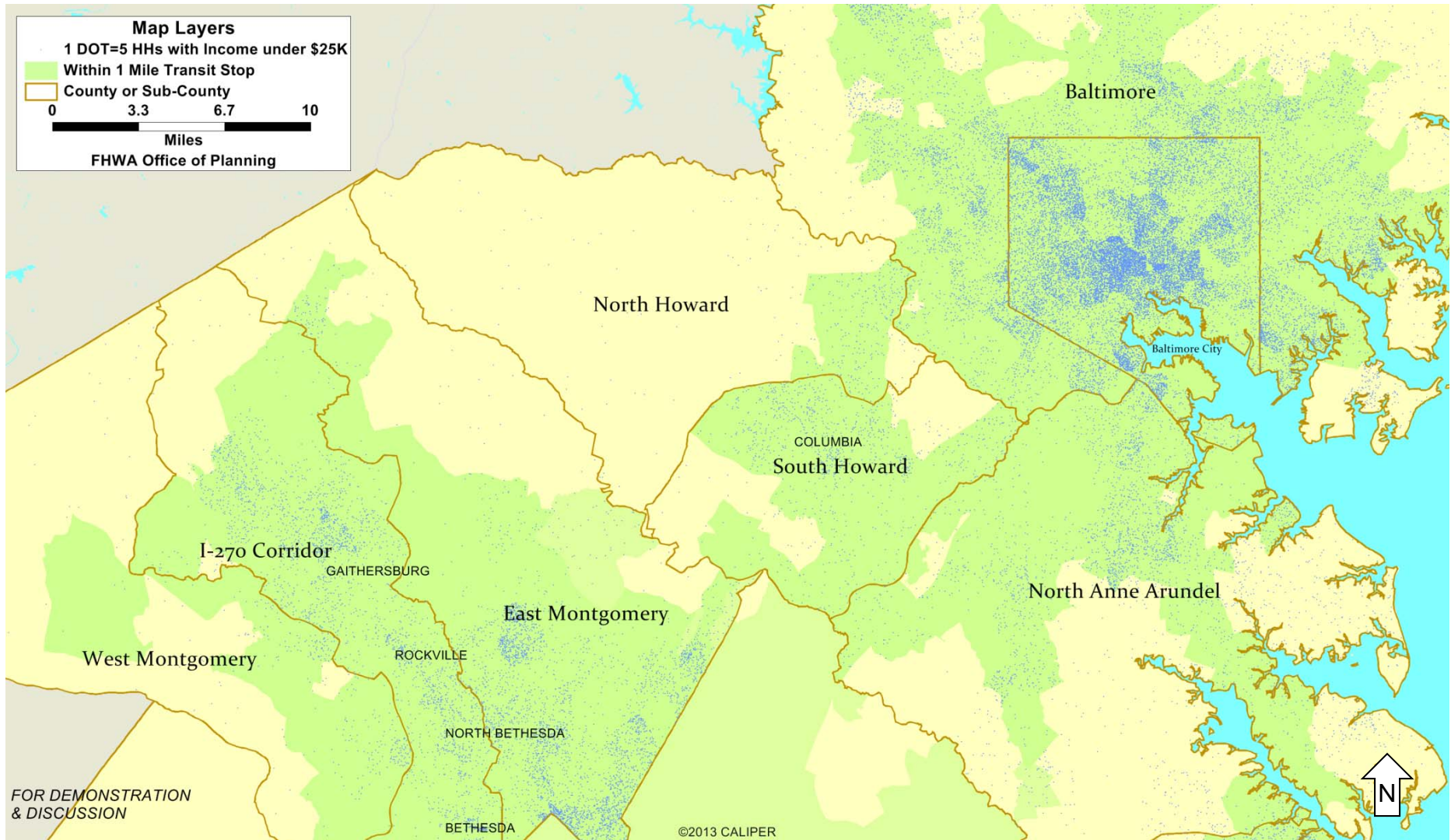


Data Resources

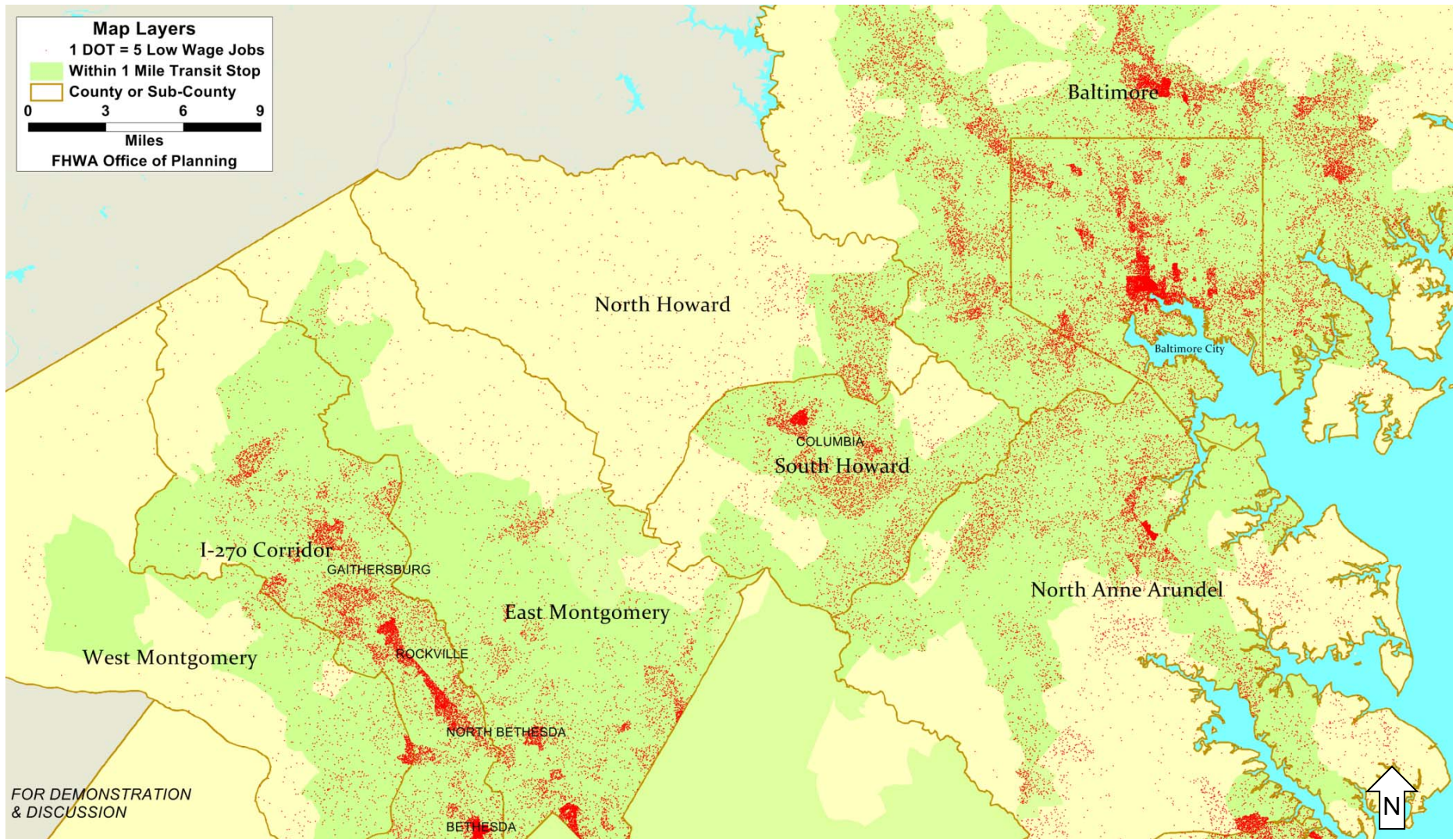
- Census American Community Survey
(tract level preferred)
- Census Longitudinal Employer Household Dynamics *(local data preferred)*
- USDA Food Environment Atlas
- MTA and Howard Transit **General Transit Feed Specification Data**



Low Income Households



Low Wage Jobs



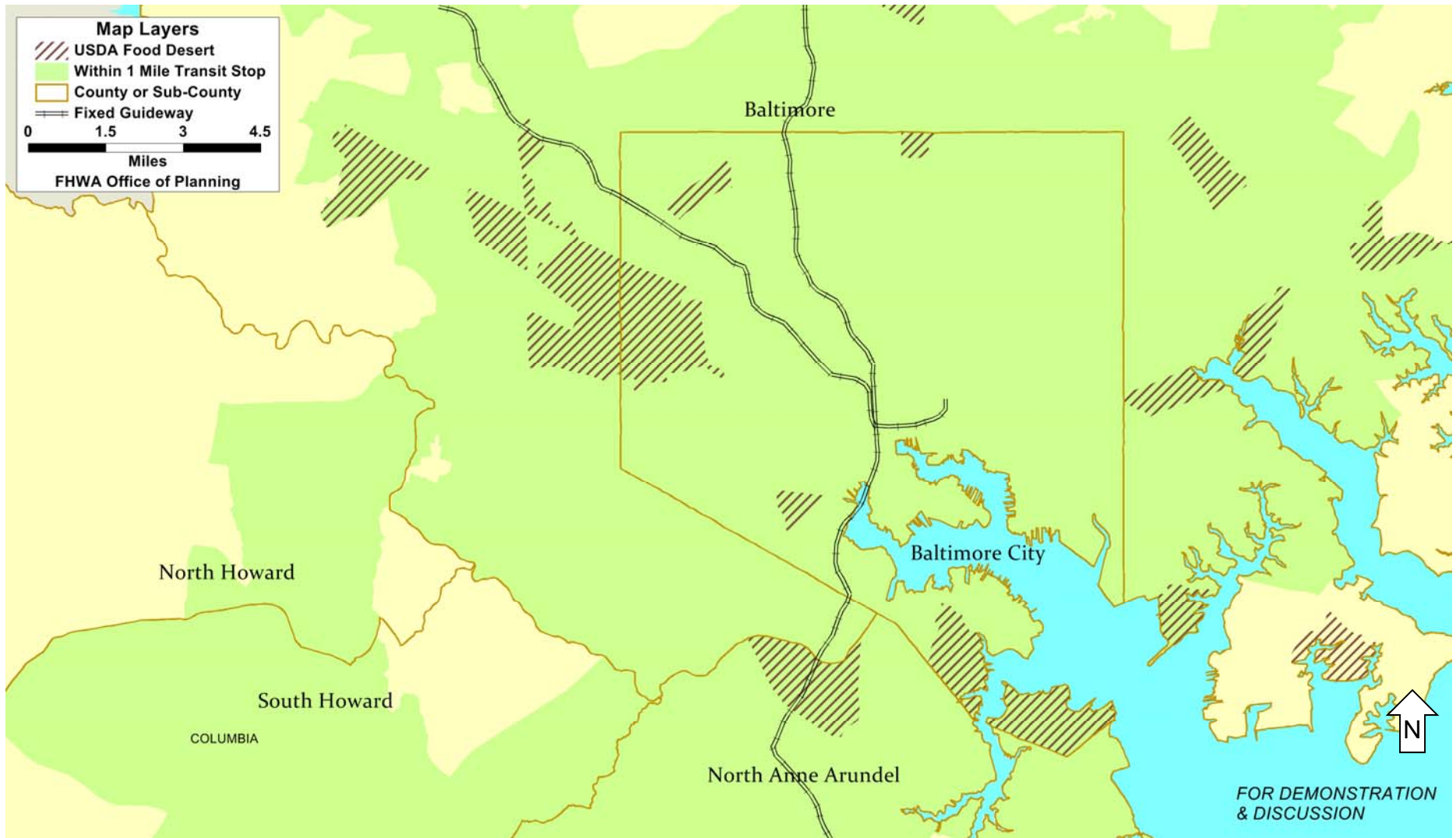
Definitions: USDA Example

Census tracts qualify as food deserts if they meet low-income and low-access to healthy food thresholds:

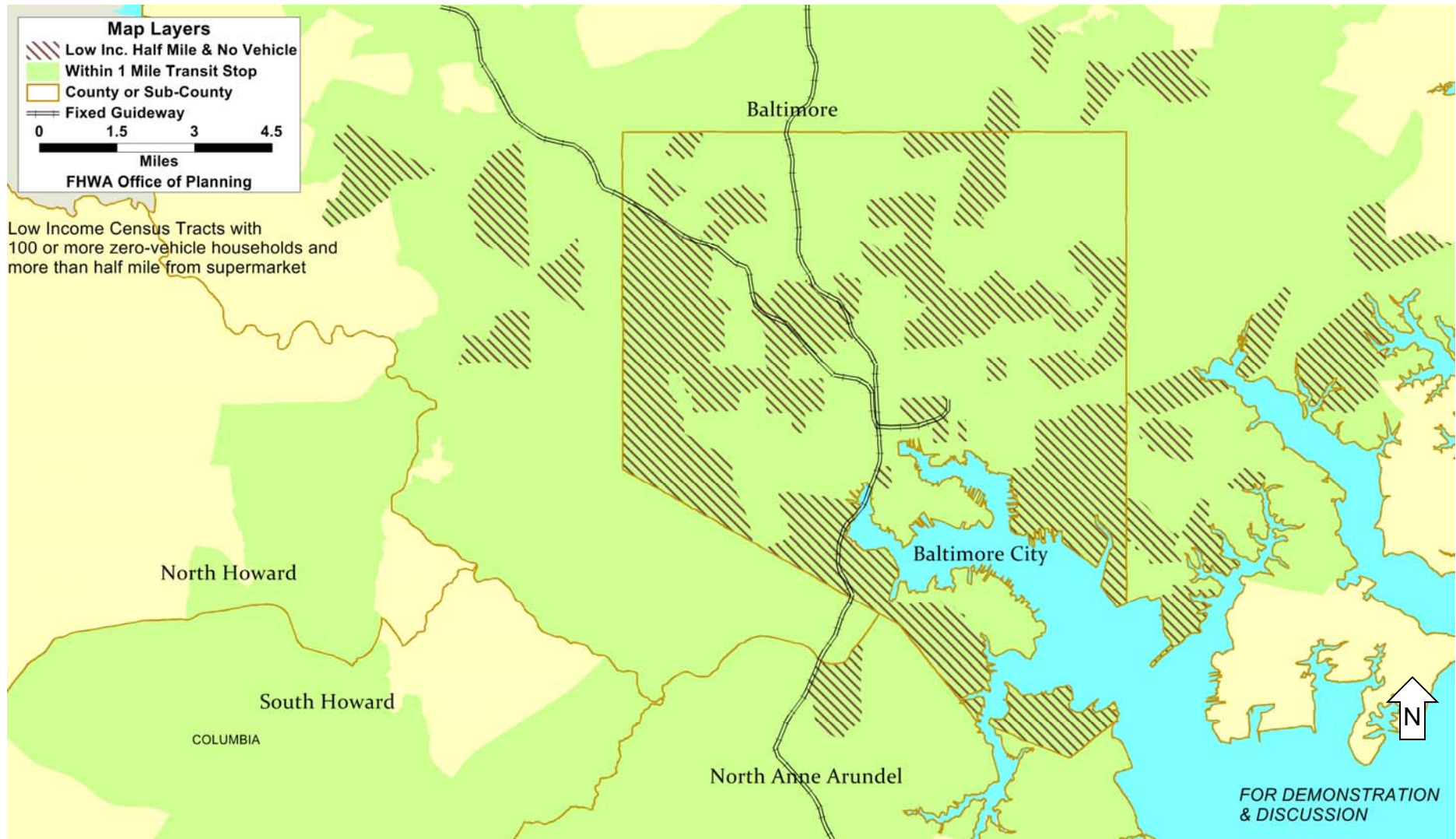
- Low-income census tracts as identified using U.S. Treasury New Markets Tax Credit criteria
 - a poverty rate of 20 percent or greater, **or**
 - a median family income at or below 80 percent of the median family income for the encompassing MSA or State-wide median family income outside of MSAs.
- Low-access to healthy food census tracts have a significant number (500) or share (33%) of population that live far (> 1 mile within an MSA **or** > 10 miles non-MSA) from a supermarket.



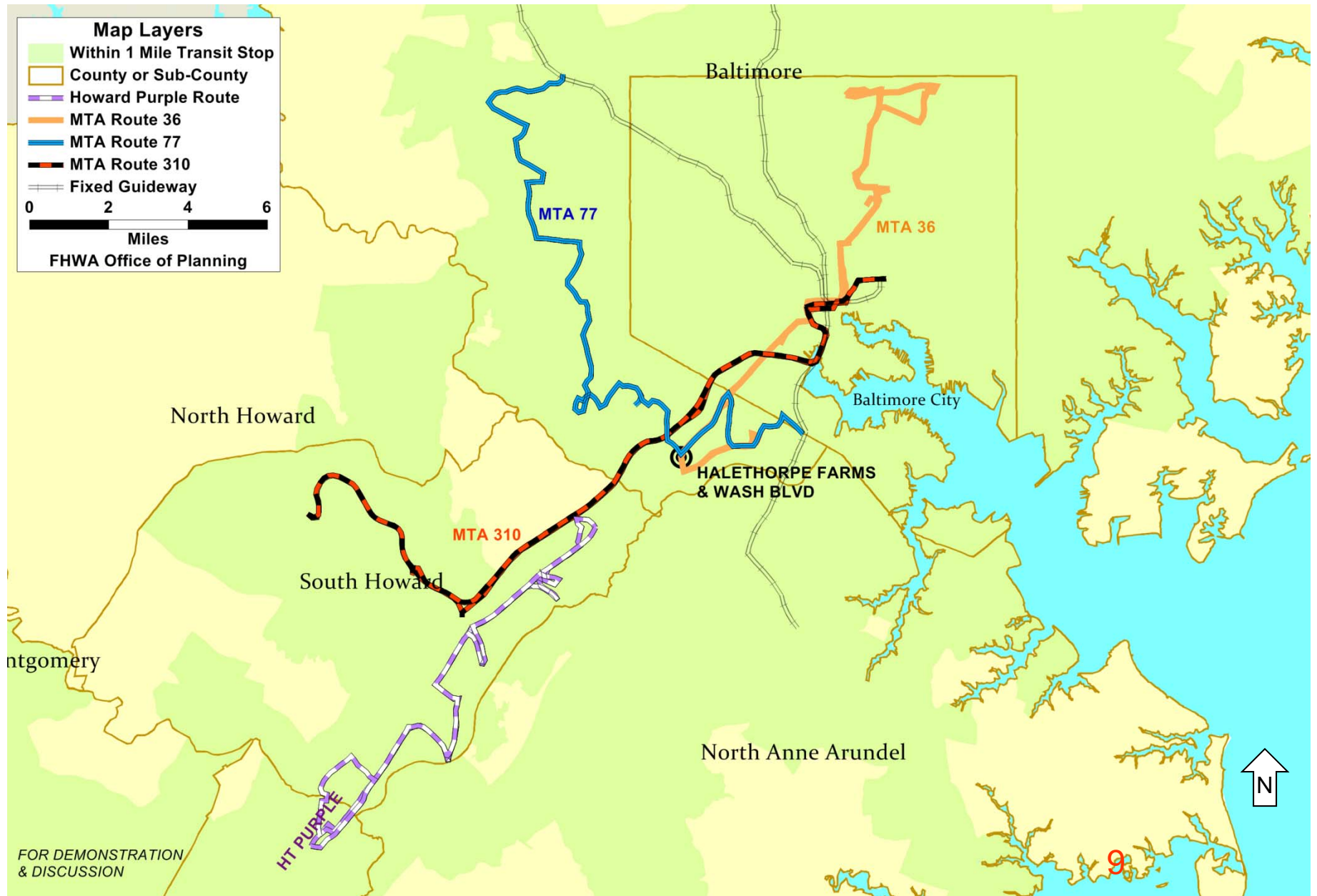
Food Desert Standard Definition



Different Definition: Different Picture



GTFS-Based Transit Service Analysis

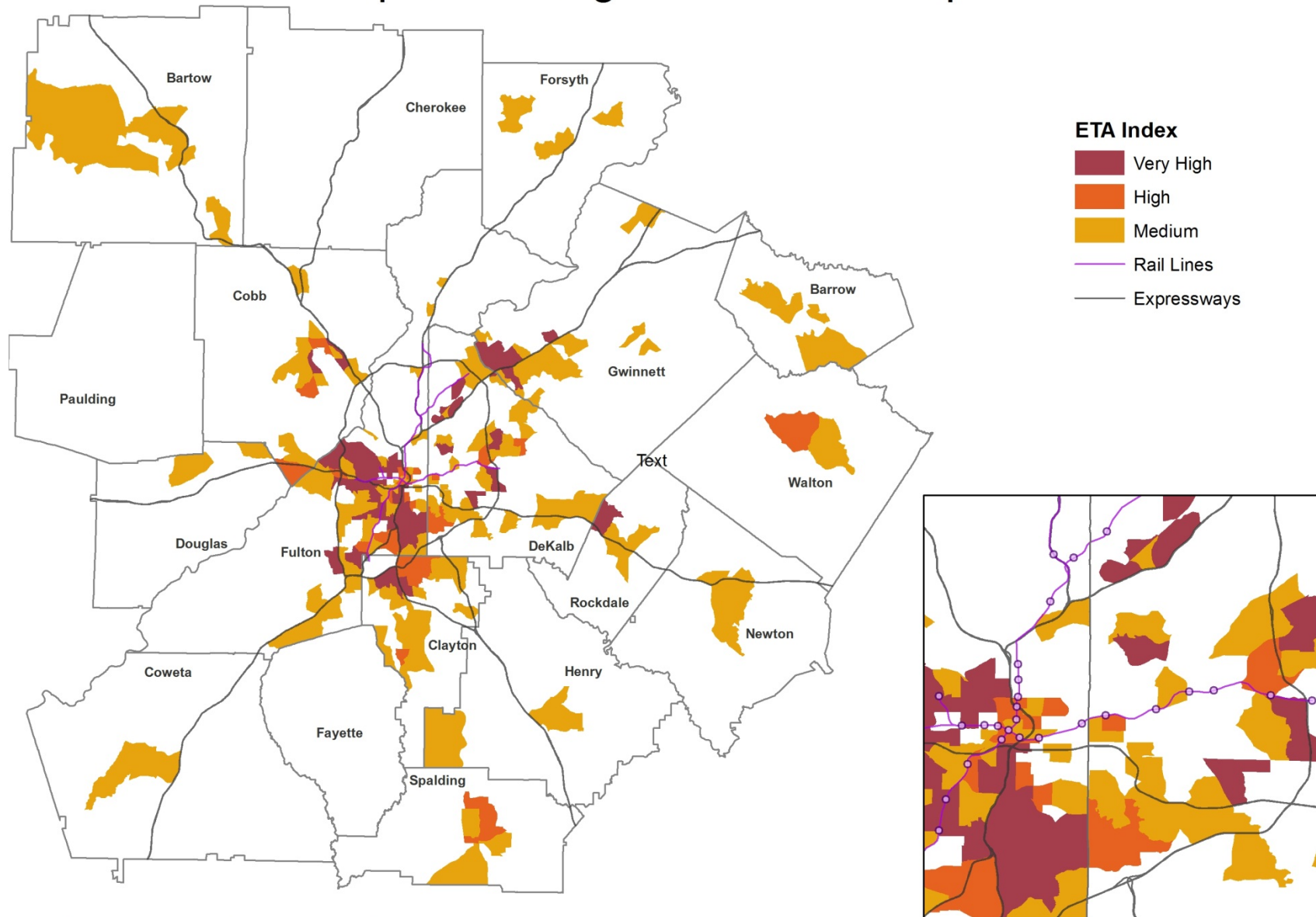


Atlanta Regional Commission

- Equitable Target Areas Index
- Transit Access
- Walk and transit access to resources and services

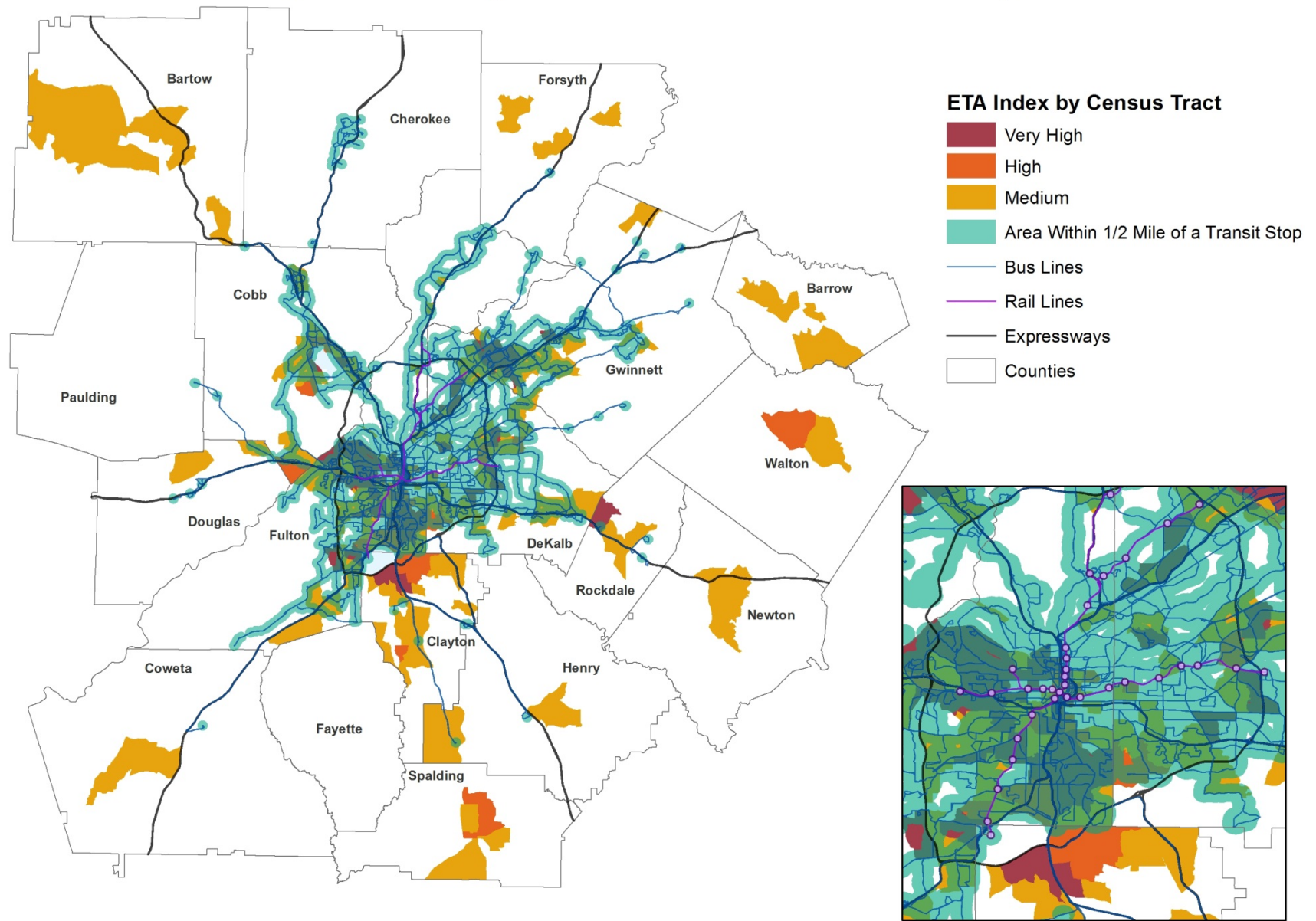


Equitable Target Area Base Map

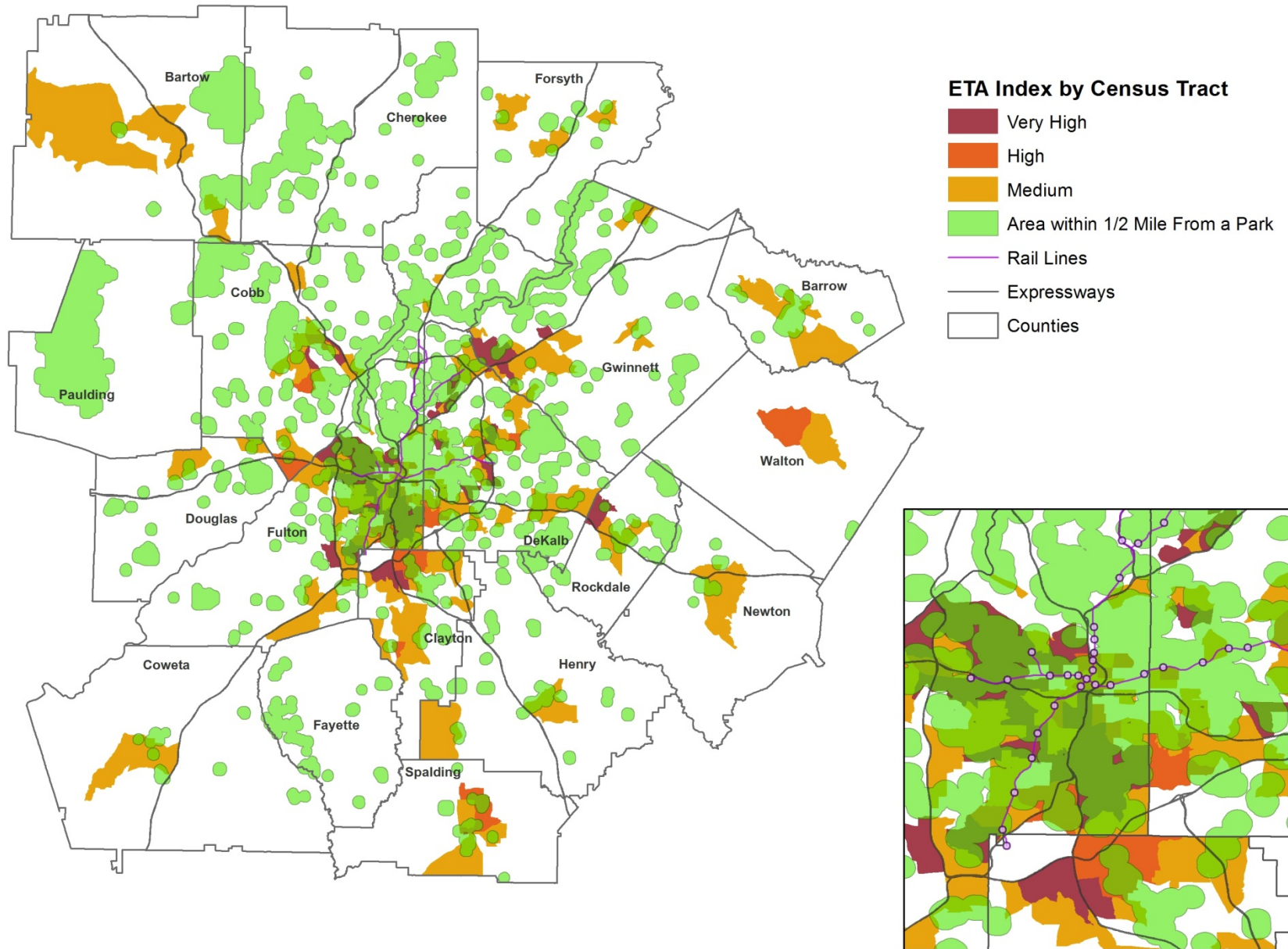


<http://atlantaregional.com/the-regional-plan>

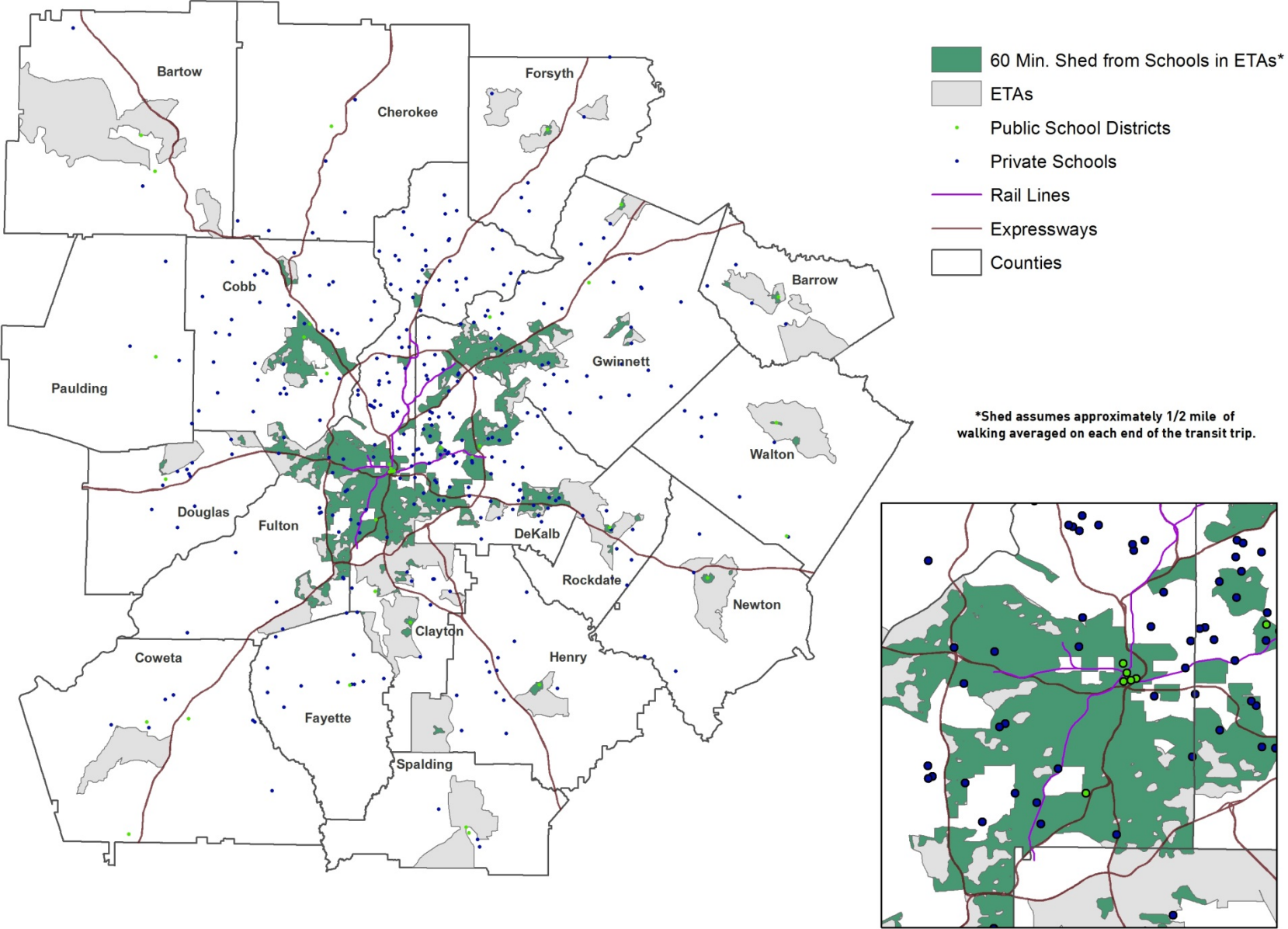
Equitable Target Areas Transit Accessibility



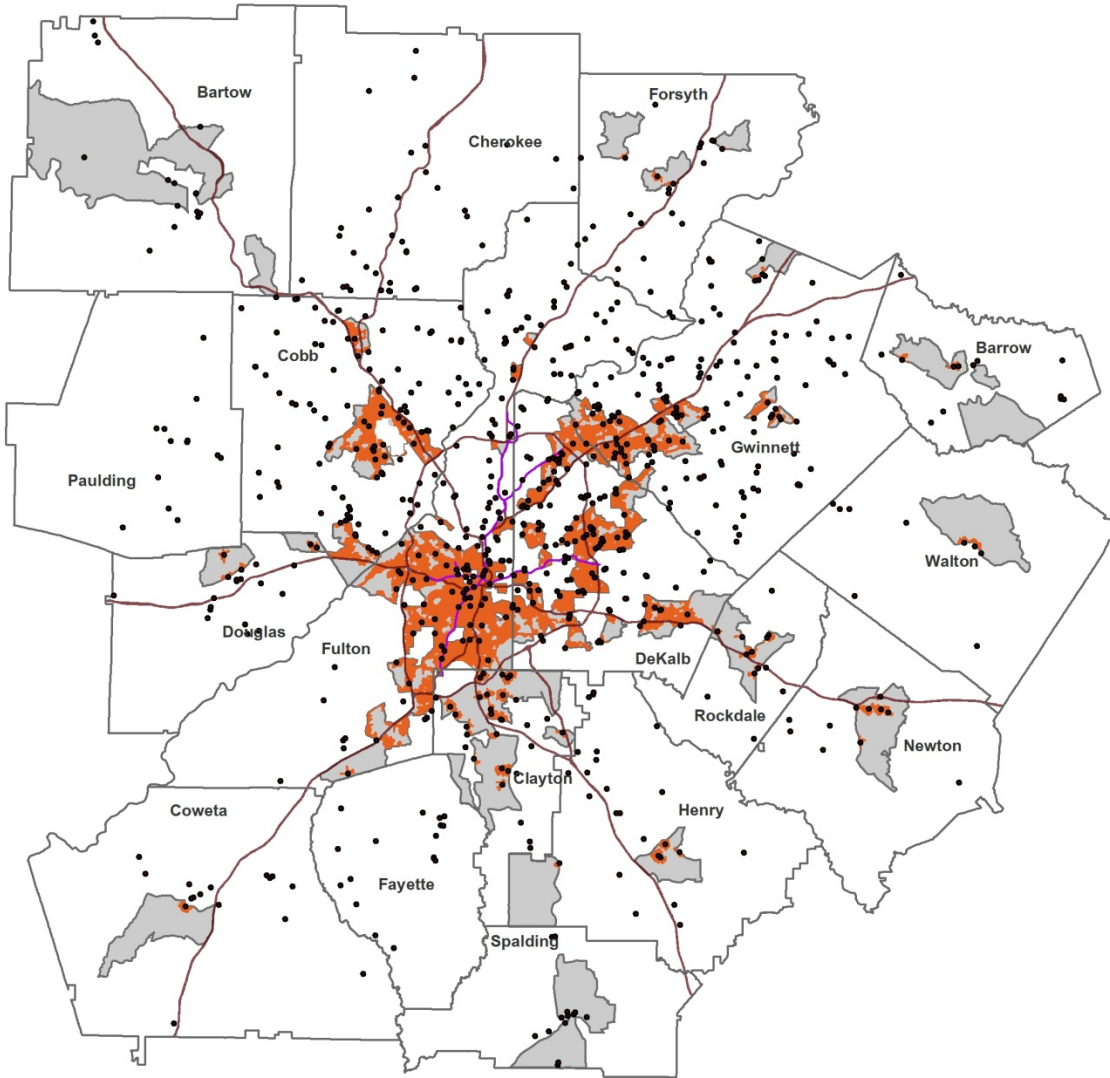
Equitable Target Areas Park Accessibility



Grades K-12 Transit Travel Sheds



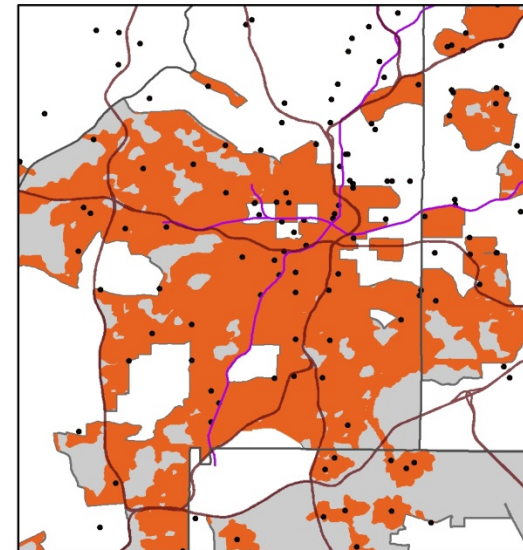
Grocery Store Walk and Transit Travel Sheds



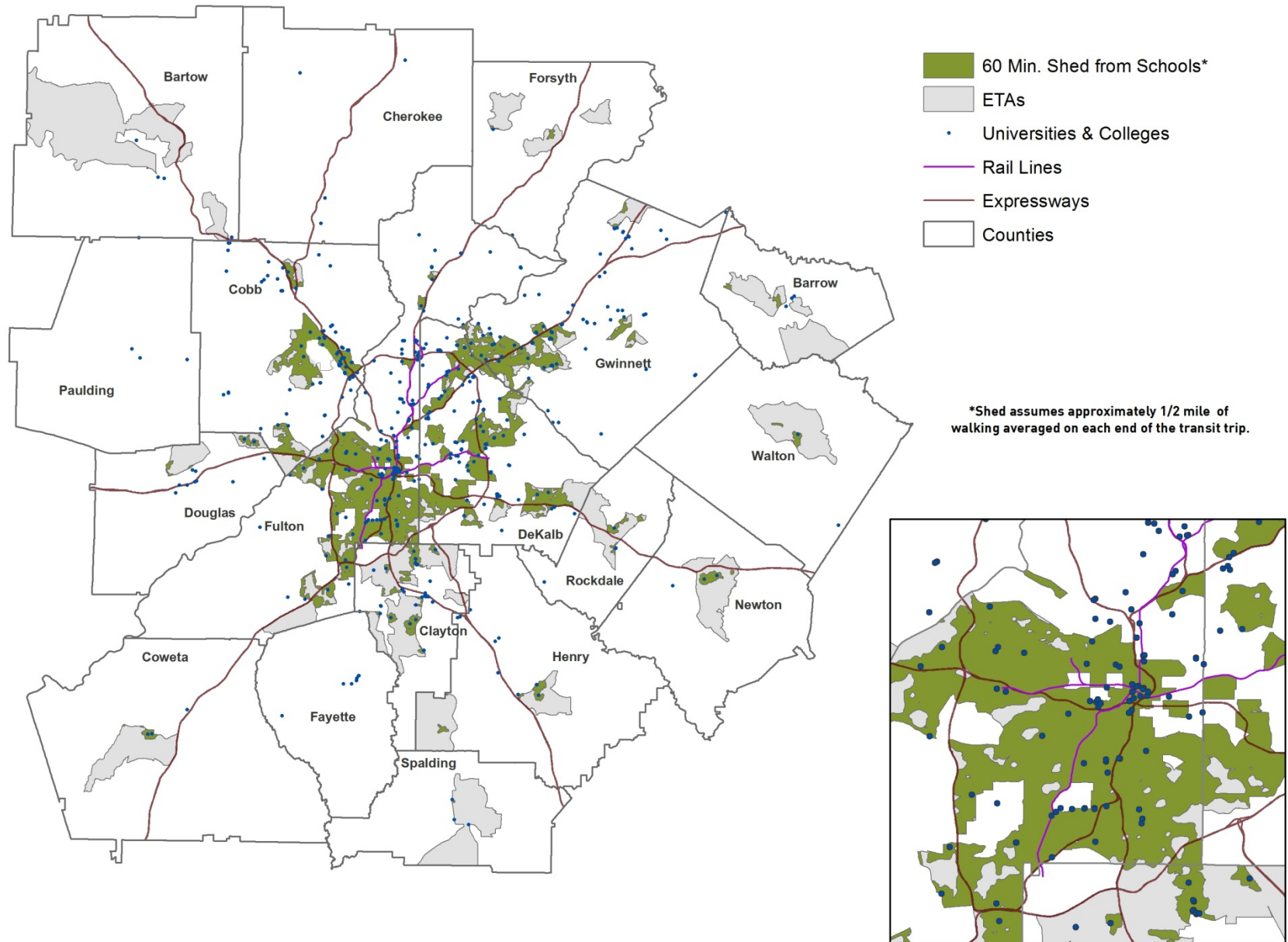
- 30 Min. Shed from Grocery Stores**
- ETAs
- Grocery Stores*
- Rail Lines
- Expressways
- Counties

*Grocery Store definition from NACIS and sale volume of at least 3,500,000

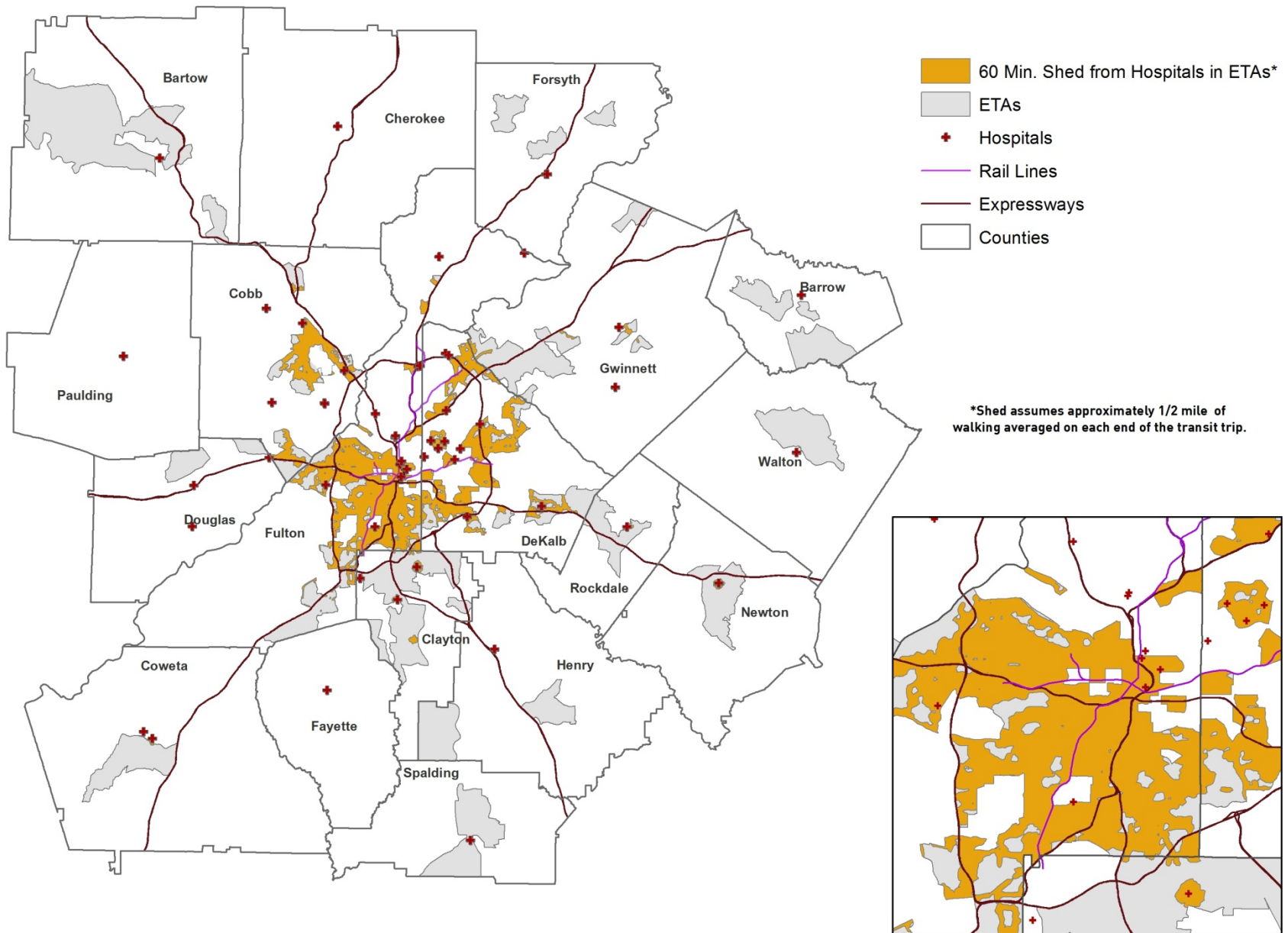
**Shed assumes up to 1 kilometer walking averaged on each end of the transit trip.



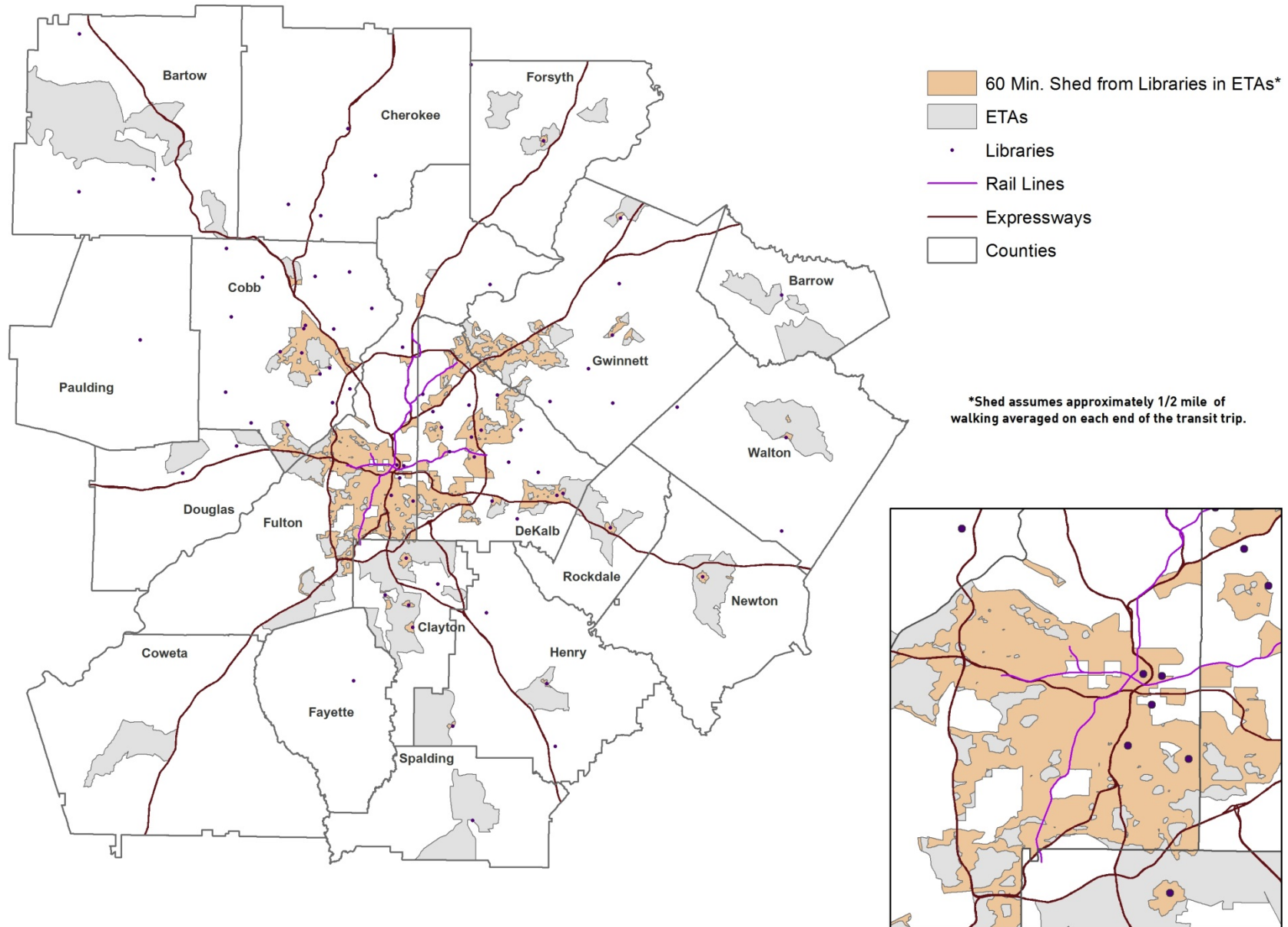
Equitable Target Area Accessibility to Higher Education



Hospital Transit Travel Sheds



Library Transit Travel Sheds



More information

- FHWA
 - Ed Christopher
 - Supin Yoder
 - Brian Gardner
- FTA
 - Ken Cervenka
- www.atlantaregional.com/plan2040/documents--tools

