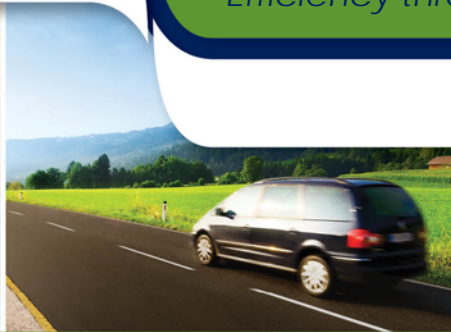


Regional Models of Cooperation

Regional Transit Planning

Efficiency through technology and collaboration



U.S. Department of Transportation
Federal Transit Administration



U.S. Department of Transportation
Federal Highway Administration

Purpose & Background

Promote cooperation and coordination across MPO and State boundaries to develop a regional approach to transportation planning

Supported by:

- Planning Emphasis Area (PEA) Fiscal Year 2015
- Every Day Counts (EDC-3)



Why is Enhanced Coordination Needed?



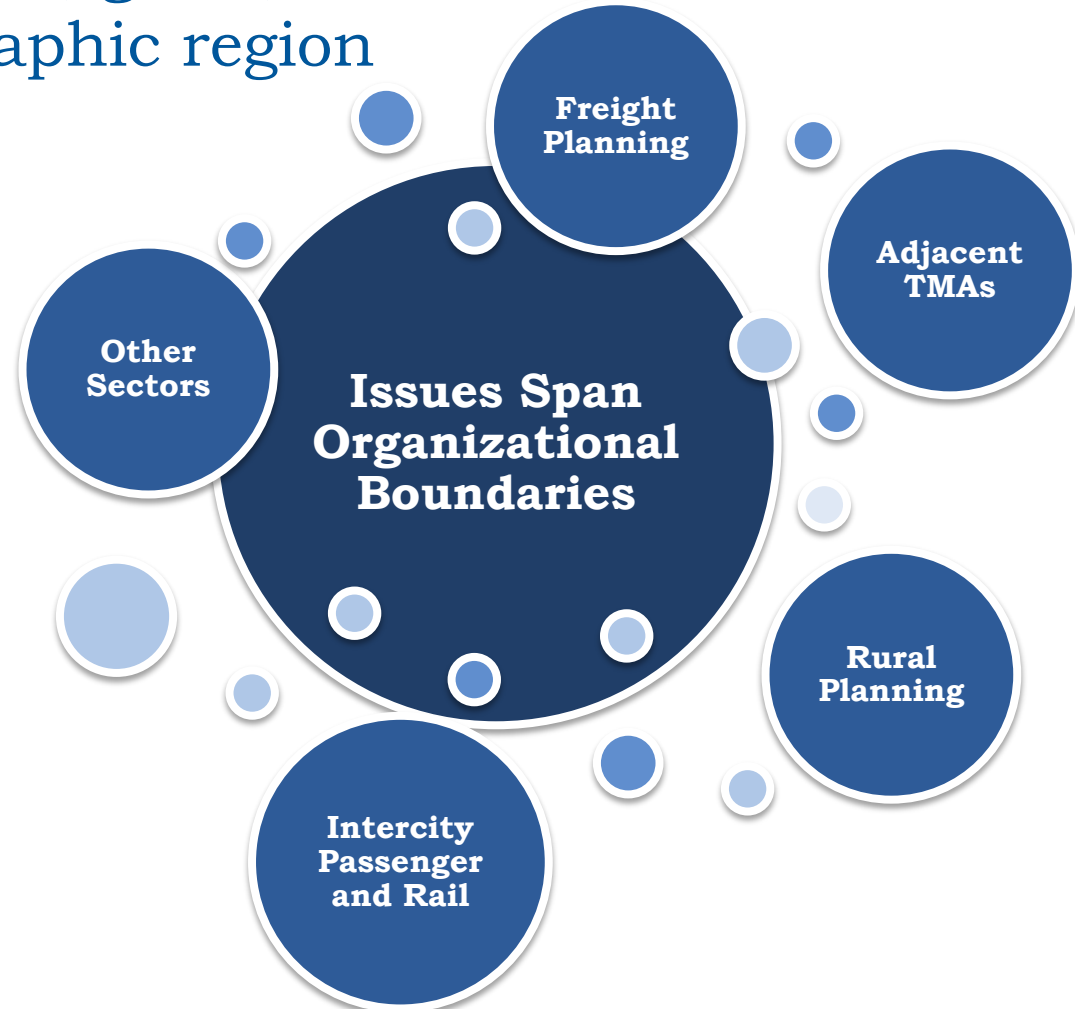
**Multiple Metropolitan
Planning Organizations**



**Coordinated
Regional
Planning**

Why is Enhanced Coordination Needed?

Recognize mutual needs, goals, and objectives of the geographic region as a whole



Regional Models of Cooperation: Implementation Activities

1. Webinar Series
2. Peer Exchange Workshops
3. Handbook



Regional Models of Cooperation Webinar Series

1. Regional Models of Cooperation Overview (Jan 27, 2015)
2. Air Quality Planning (August 25, 2015)
- 3. Regional Transit Planning (October 16, 2015)**
4. Safety Planning (December 10, 2015)
5. Congestion Management (February 11, 2016)
6. Freight Planning (April 14, 2016)
7. Data Sharing, Systems, and Tools (June 9, 2016)
8. Joint Planning Products (August 11, 2016)



Today's Speakers

- **Dwayne Weeks**
Director, FTA- Office of Planning
- **John Orr**
Manager, Transportation Access and Mobility
Division, Atlanta Regional Commission, Atlanta,
Georgia
- **Eric Anderson**
Transportation Director, Maricopa Association of
Governments, Phoenix, Arizona
- **Mark Pitstick**
Technical Advisor, Regional Transportation
Authority, Chicago, Illinois



Regional Models of Cooperation in Regional Transit Planning

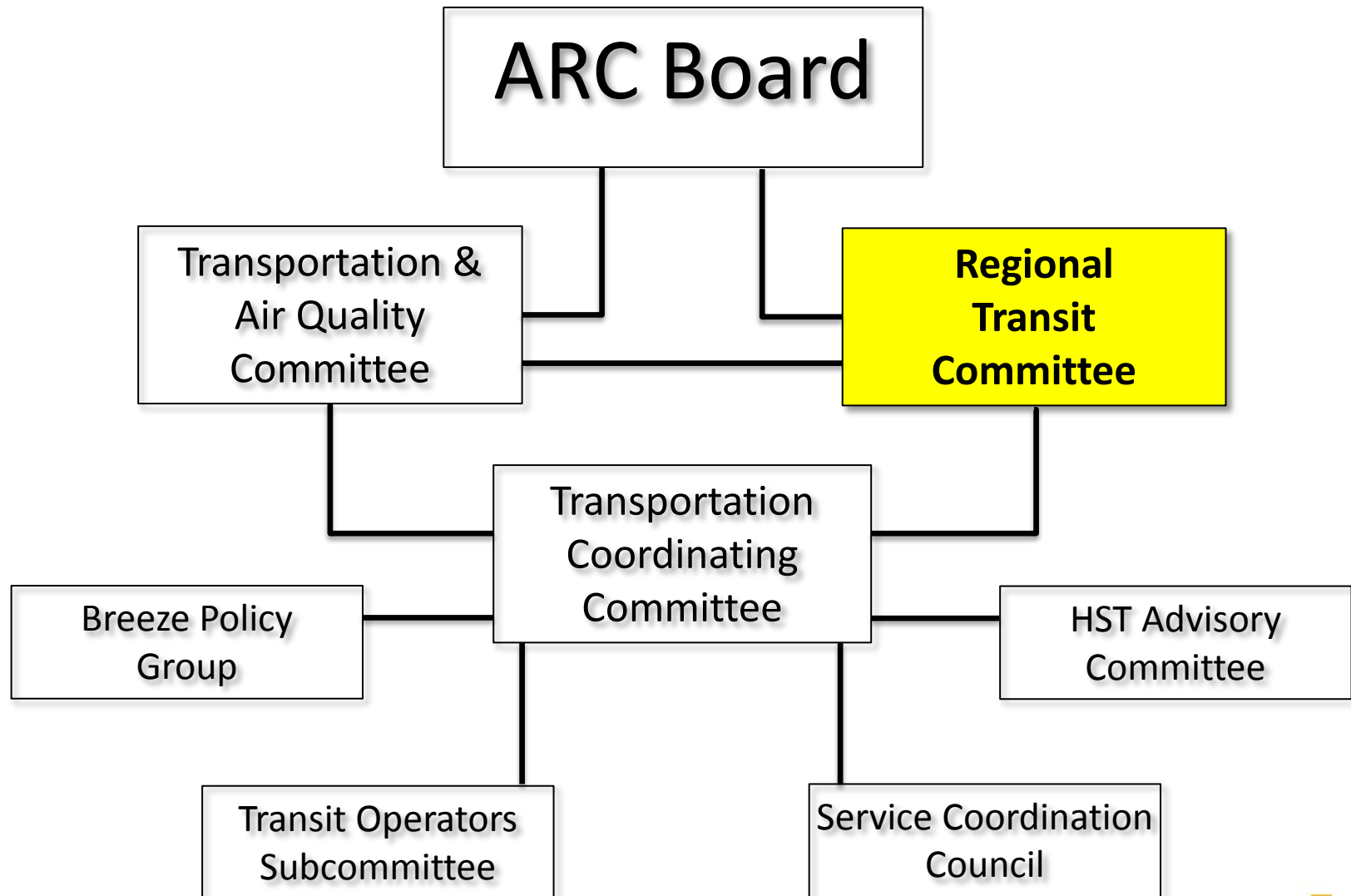
John Orr, Atlanta Regional Commission
October 16, 2015

The role of the Regional Transit Committee (RTC)

RTC is the forum to resolve the policy & operational issues that arise from operating a multi-agency & multi-jurisdictional transit system:

- Federal Issues (implementation of MAP-21)
- Service Coordination
- Fare Policy
- Regional Planning Priorities

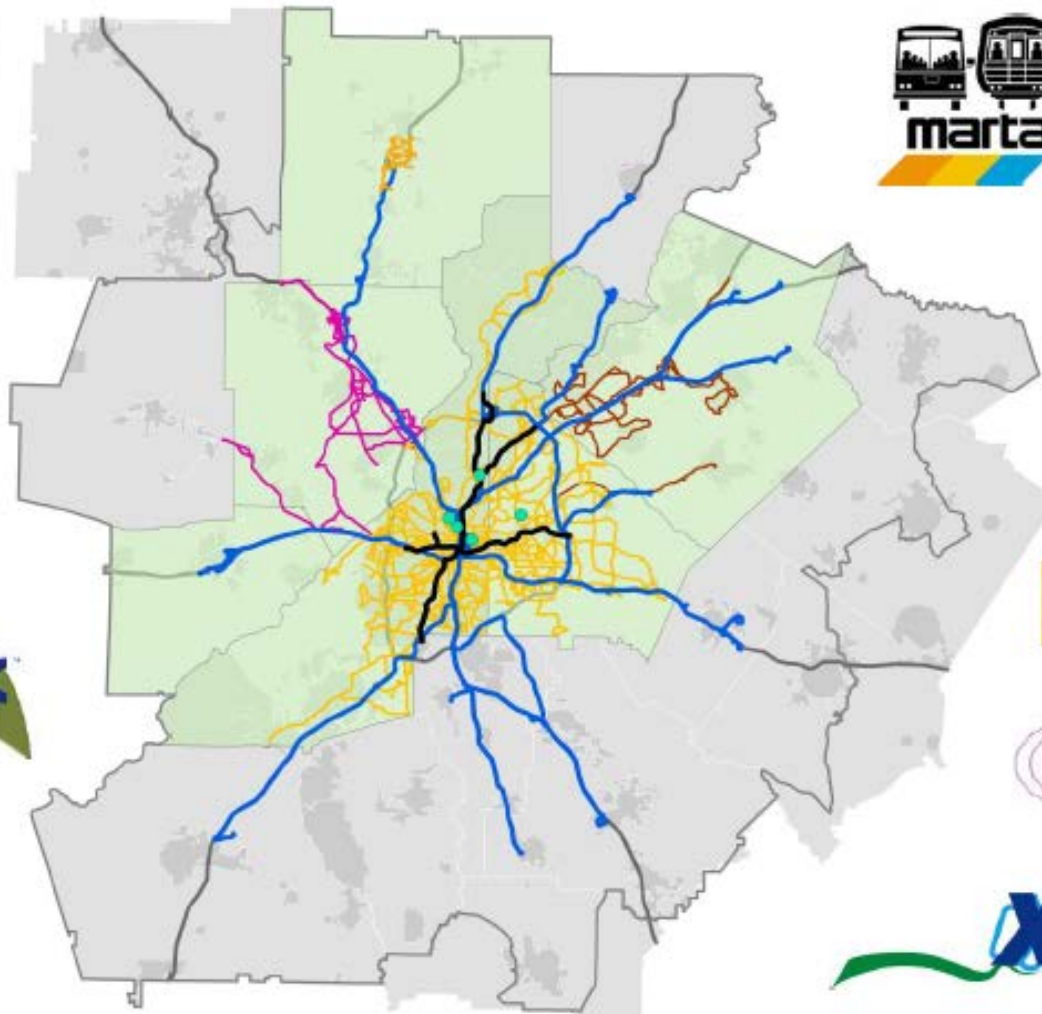
Decision Making



Regional Transit System & Providers



FREE RIDE



Four stages of Regional Transit Coordination

Iteration	Dates	Products
RTIA	2004-2005	<ul style="list-style-type: none"> • TPB Work Program
Transit Planning Board (TPB)	2006-2008	<ul style="list-style-type: none"> • Regional Transit Map • Unified Regional Governance Framework Statement • Service Coordination (CCT 10/MARTA 12, joint bus stops) • Regional Transit Vision (Concept 3)
Transit Implementation Board (TIB)	2009	<ul style="list-style-type: none"> • Regional Governance Statement • RTC
RTC	2010 – Present	<ul style="list-style-type: none"> • Regional Transit Data Warehouse & Open Transit Data • Regional Fare Study & Breeze Coordination • Unified Bus Stop Signage Design • Regional Fleet & Facilities Inventory • Updated Regional Transit Map • Concept Regional Transit Governance Legislation • Updated Regional Transit Vision

Priority Work Tasks

- Unified Bus Stop Signage implementation
- Route Planning, Service, and Fare Collection Coordination
- Regional Transit Marketing Strategy
- MPO Coordination

Unified Bus Stop Signage Design Project

Current Signage



regional impact + local relevance

Unified Bus Stop Signage Design Project

Planned Signage



regional impact + local relevance

Route Planning

← → ↻ atltransit.org/index.html ☆



Plan



Purchase



Transfer



Resources



Welcome to the ATLtransit Pilot Project, a joint effort of metro Atlanta's transit agencies to provide a hub for information on how transit works together to connect the region.

About

ATLtransit is a joint pilot project of the major transit agencies in metro Atlanta, who are working together to provide a unified resource for customers of transit in the region.

[Learn More »](#)

How It Works

Plan a trip anywhere in the region using the ATLtransit Open Trip Planner, find resources for buying passes, and learn what you need to do if you want to transfer among systems.

[Learn More »](#)

Give Us Feedback

We need your feedback to make ATLtransit a valuable resource for the millions of people who use transit in metro Atlanta every year. So tell us what you think.

[Learn More »](#)

Route Planning

atltransit.org/plan.html

The image shows a web-based route planning interface for Atlanta, Georgia. The main map displays a network of transit routes in blue, overlaid on a standard street map. Major highways like I-285, I-75, I-20, and I-675 are clearly visible. Labeled locations include Sandy Springs, Chamblee, Decatur, Atlanta, Forest Park, Douglasville, and Smyrna. A 'Trip Options' panel is located in the bottom-left corner, featuring input fields for 'Start' and 'End', a 'Depart' dropdown set to '7:45am' on '10/16/2015', a 'Travel by' dropdown set to 'Transit', and a 'Maximum walk' field set to '2.00 mi'. A 'Plan Your Trip' button is positioned at the bottom of this panel.

Trip Options

Start:

End:

Depart:

Travel by:

Maximum walk: mi.

Atlanta Regional Mobility Management “One-Click System”

regional impact + local relevance



Coordination in Trip Planning

Greater Atlanta MOVES me.
Discover your trip. Get to your destination.

Welcome, Guest ▼



Trip > Options > Review > Plan

Year of Birth

Do you own or have access to a personal vehicle? Yes No Not Sure

Are you a military veteran? Yes No

Are you low income? Yes No Not Sure

Do you currently participate in Medicaid? Yes No Not Sure

Do you currently participate in Medicare? Yes No Not Sure

Do you currently participate in ADA Paratransit? Yes No Not Sure

Do you use a wheelchair, scooter or other assistive device? Yes No Not Sure

Do you walk...

How long can you comfortably walk?



[Home](#) | [Aging Resources](#) | [Regional Mobility Management](#)

Regional Mobility Management

Mobility Management is a strategic approach for managing and delivering coordinated transportation services to all customers.

ARC with a consortium of its partners is developing a Regional Mobility Management Program with the goal to link accessible and responsive transportation with community needs.

Please visit the individual places below to see what the region already has to offer:



Coordination in Trip Planning

Greater Atlanta MOVES me.
Discover your trip. Get to your destination.

Welcome, Guest ▾



Trip Options Review Plan

Transportation Modes

- Public Transit
 - Bus
 - Train
- Rideshare
- Specialized Services
- Taxi

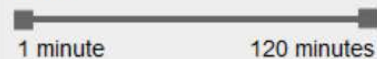
Number of transfers



Cost



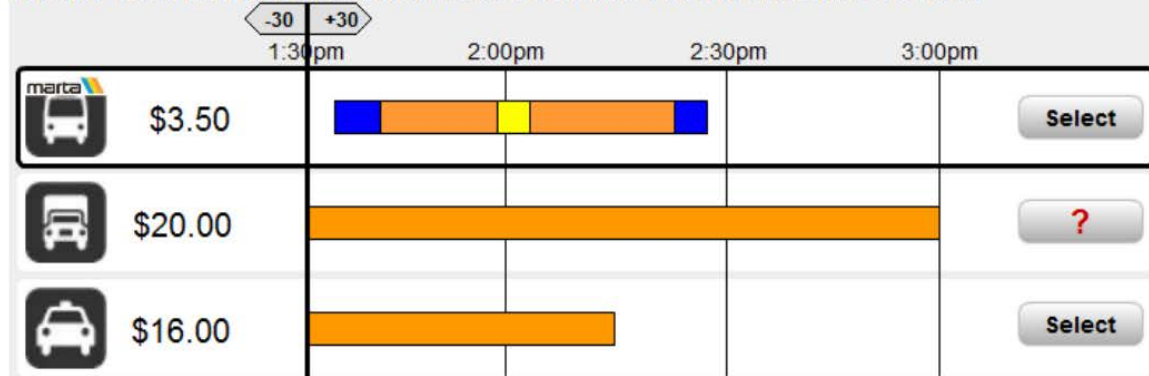
Time



Outbound - 40 Courtland Street NE Atlanta, GA 30308 to Atlanta VA Medical Center



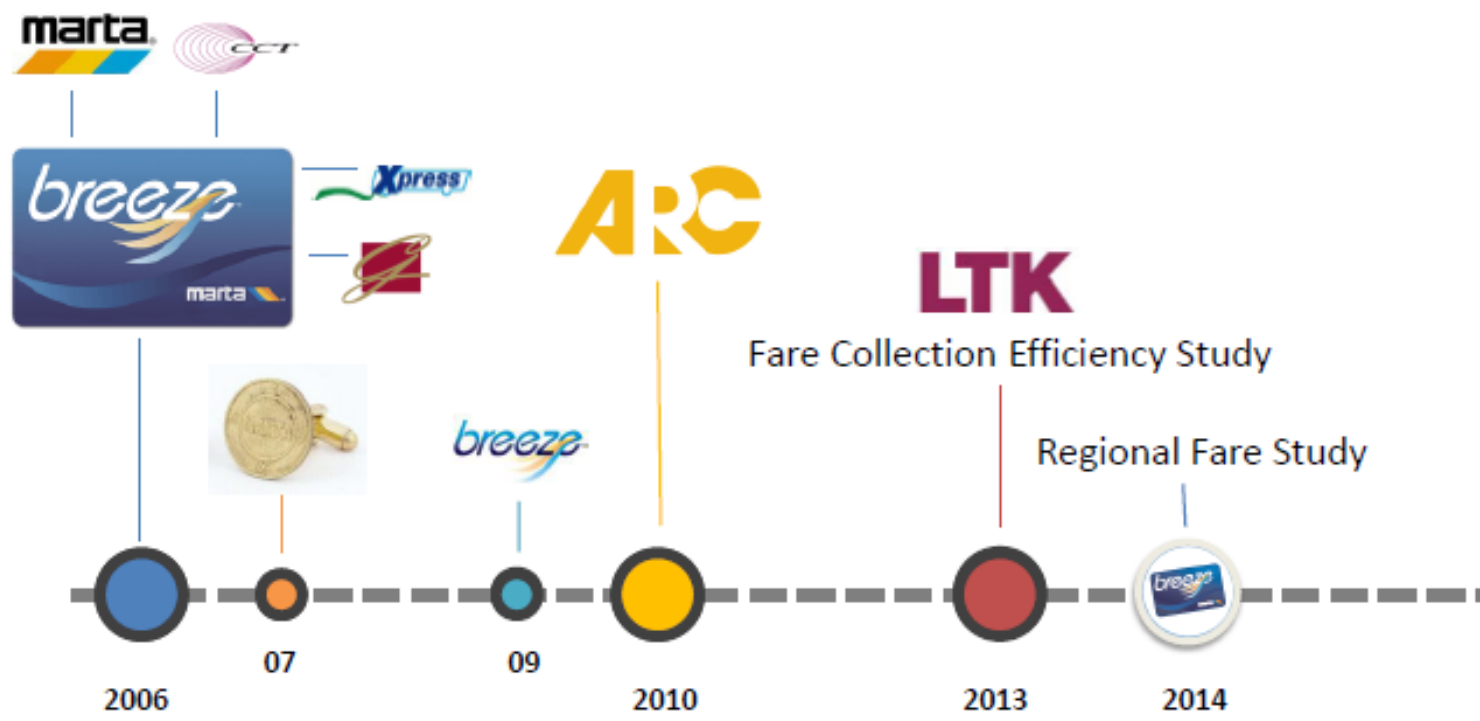
Return - Atlanta VA Medical Center to 40 Courtland Street NE Atlanta, GA 30308



Walk Vehicle Transfer

Plan

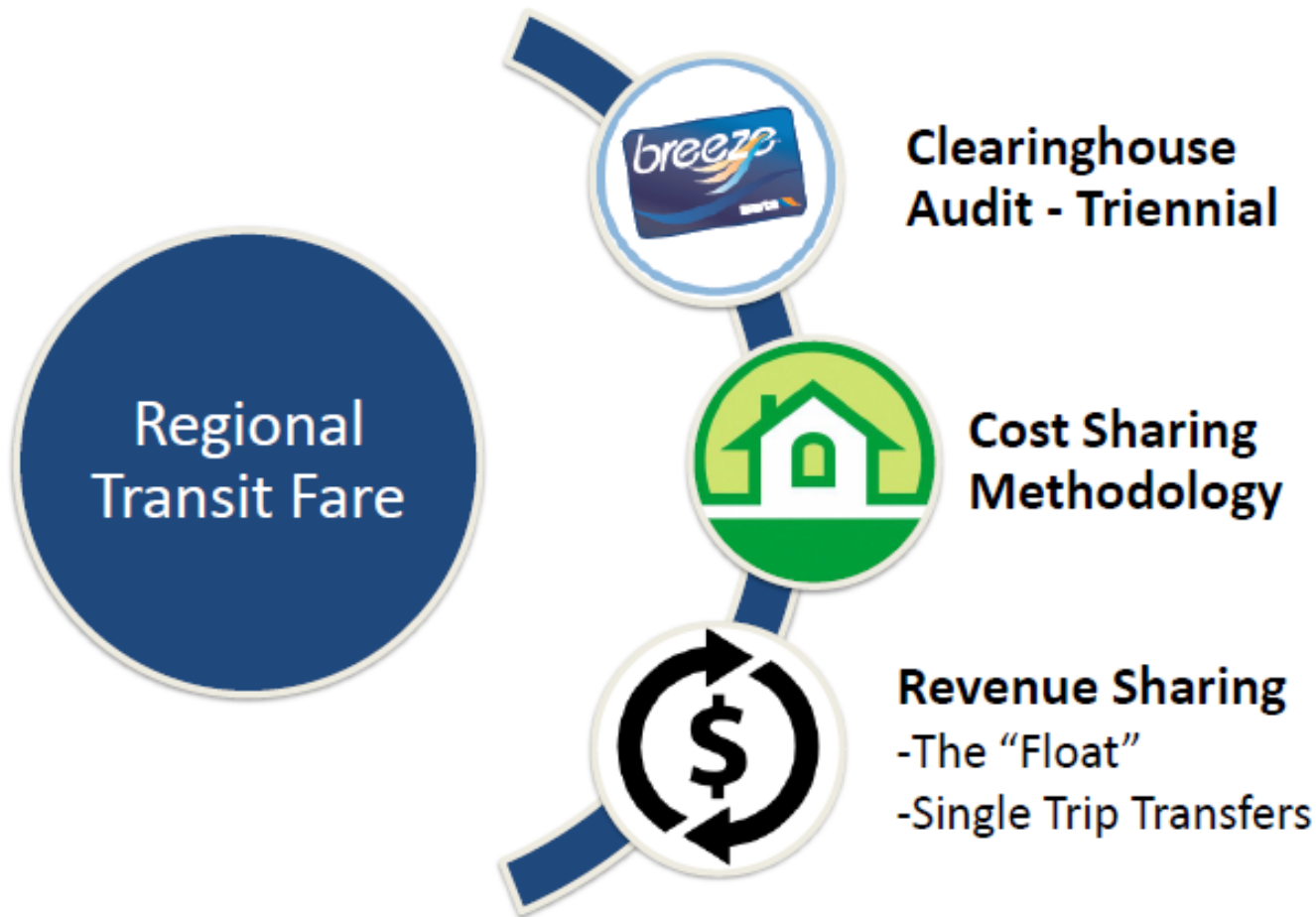
Regional Fare Collection Coordination



Regional Fare Timeline

regional impact + local relevance

Regional Fare Collection Coordination



For Additional Information...

John Orr

jorr@atlantaregional.com

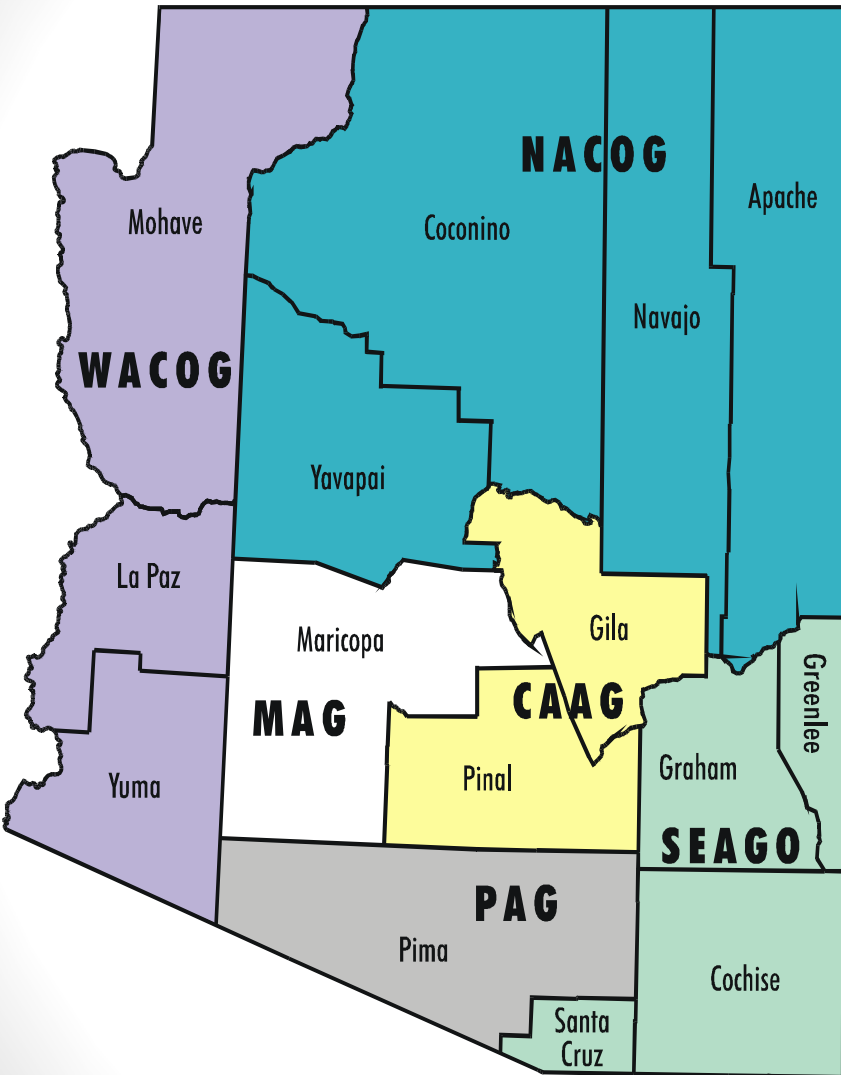
404.463.3265

Regional Models of Cooperation in Central Arizona

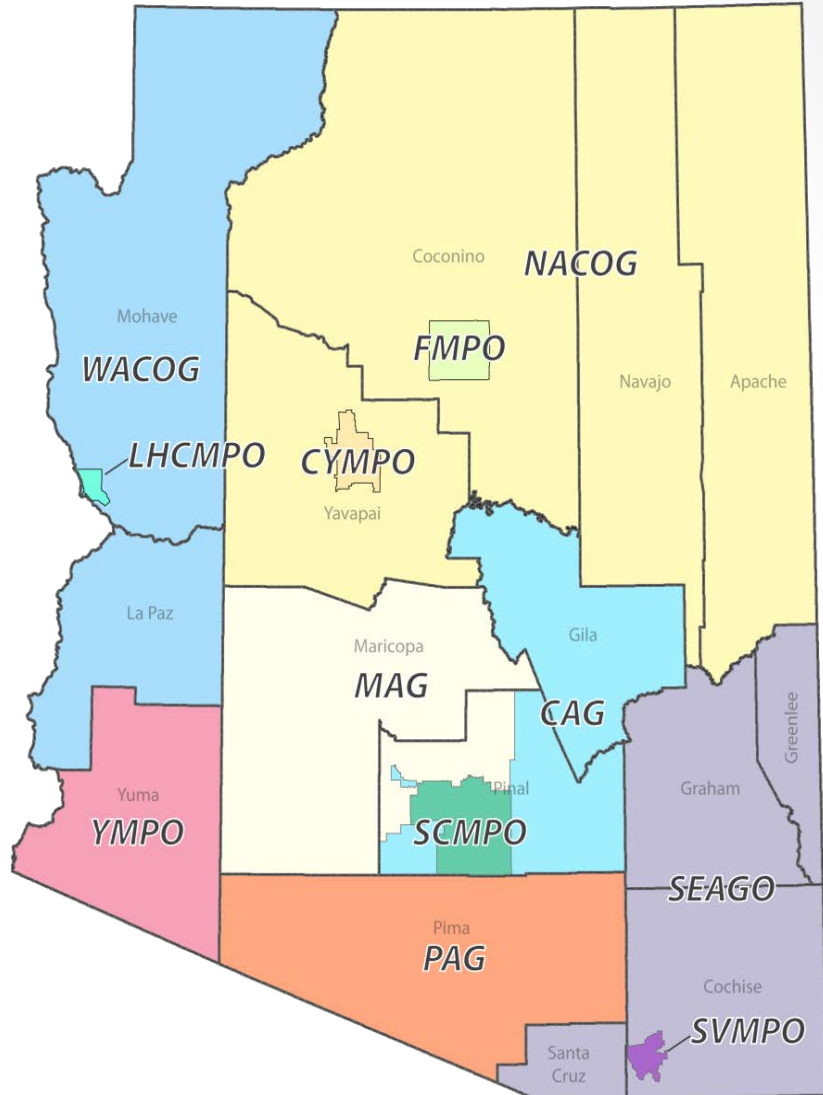


Eric Anderson, Transportation Director
Maricopa Association of Governments

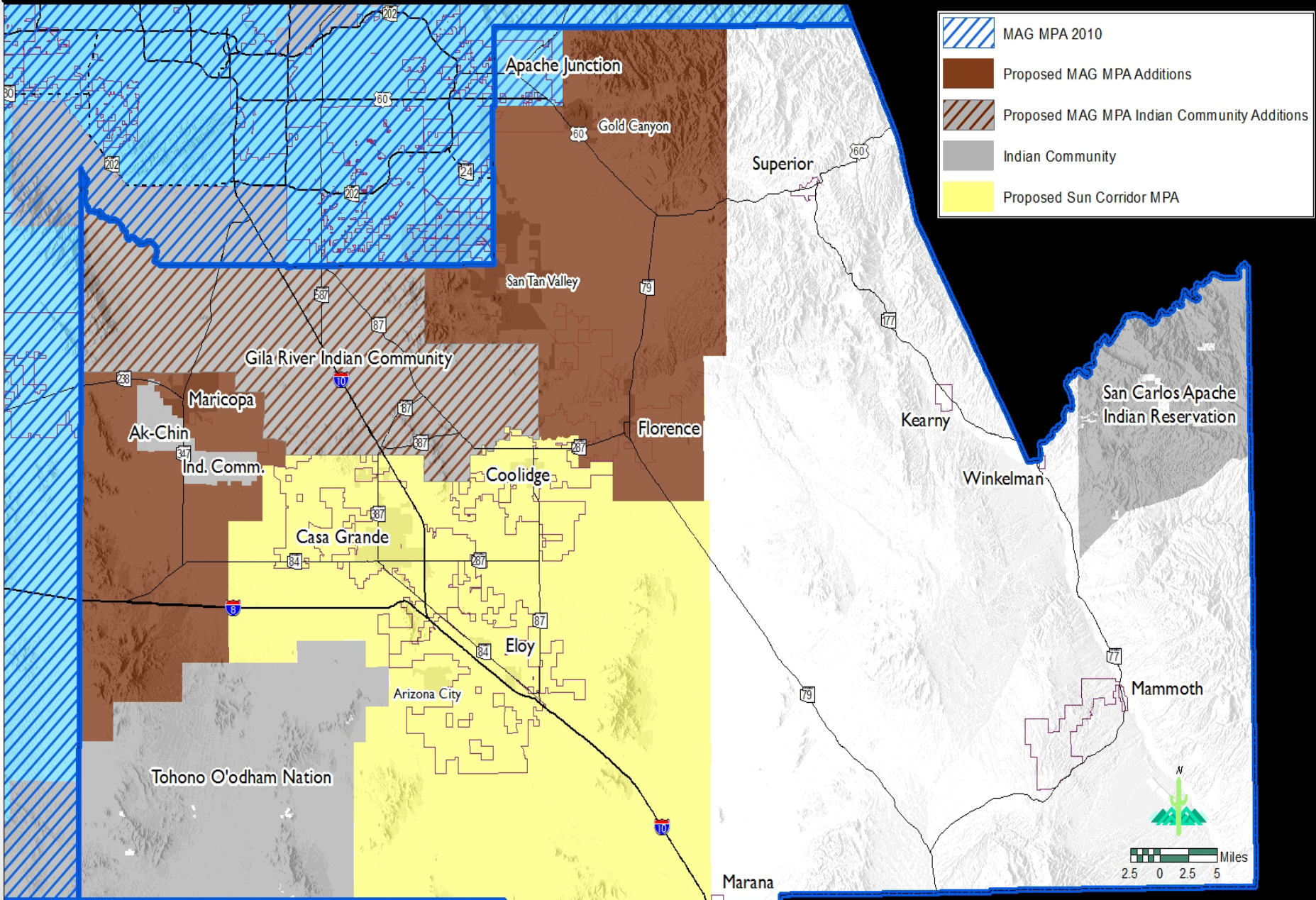
Pre-2010 Census



Post-2010 Census



MAG Metropolitan Planning Area (MPA) Boundary



Major Transit Operators



Regional bus operations
Local & Express bus service
Vanpool & Paratransit
Rideshare & TDM
LRT Project development
LRT operations



Designated recipient
Local & Rapid bus service
Paratransit
Dedicated city sales tax

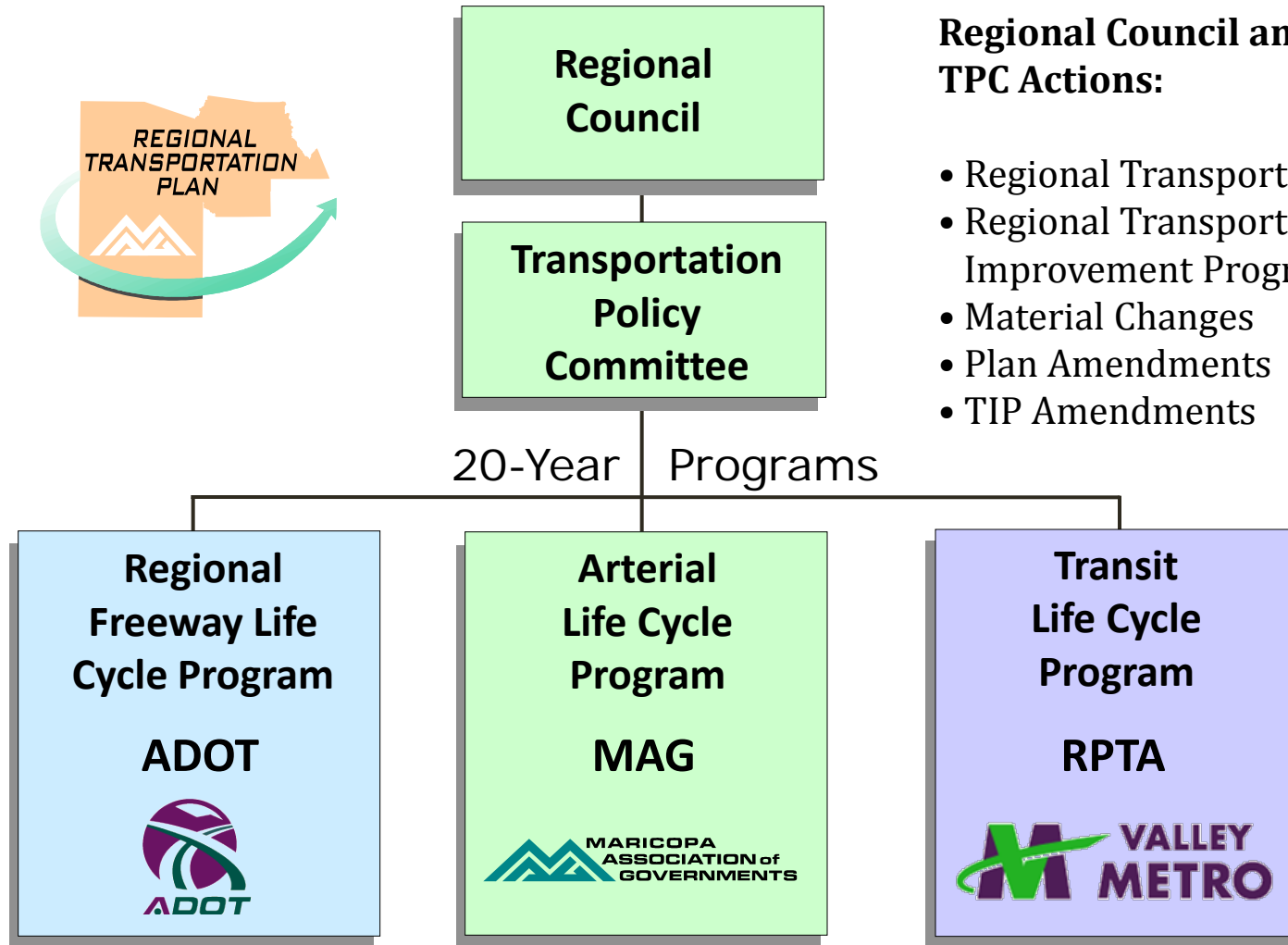


Casa Grande, Coolidge, Florence & Central
Arizona College
Partnership funded

Transit Funding

- Regional Proposition 400: Regional ½ cent sales tax for transportation
 - FY 2015 Revenue = \$382.4 million
 - 33 % of Regional Transportation Sales Tax to Transit = \$126.2 million
 - Divided between LRT Capital & Bus Capital & Operations
 - MAG Provides oversight of Proposition 400 program
- Dedicated Local Funds
 - Phoenix: 0.4% sales tax increasing to 0.7% in January 2015
 - FY 2015 Revenue @ 0.4% = \$133.6 million
 - FY 2015 Revenue @ 0.7% = \$233.8 million
 - Tempe: 0.5% sales tax
 - Glendale: 0.5% sales tax (roads & transit)
- Local General Fund Sources

Proposition 400 Responsibilities



Regional Council and TPC Actions:

- Regional Transportation Plan
- Regional Transportation Improvement Program
- Material Changes
- Plan Amendments
- TIP Amendments



		PTD	RPTA	METRO	MAG	MOU (effective March 31, 2010)	SB 1063 (effective July 29, 2010)
Programming	Transit Lifecycle Program (TLCP) / Public Transportation Fund		Transit Element	High Capacity Transit (HCT) element	Review and concurrence		48-5103
	TLCP Budget Process						48-5106
	TLCP Material Changes				Review and approval		48-5106
	Transportation Improvement Program (TIP)					Pages 2 and 4	
	Annual Formula Grant Process	Program of Projects			Review/approval/ possible ranking	Page 3	
	Annual Discretionary Grant Process				Review/approval/ possible ranking	Page 3	
System Planning	Transit Element of the Regional Transportation Plan (RTP)					Page 2	48-5121
	Transit Corridor Studies (prior to identification of project funding)					Page 6	
	Transit System Plans and Subregional Studies					Page 6	
Project Planning	RTP Project Planning (no AA required)				Review and concurrence	Page 6	
	RTP Project Planning (AA required)				Lead agency definition, review and concurrence	Page 6	
	Major Project Scoping Documents				Review and concurrence	Page 6	
	Environmental Planning						
	Project Planning During Engineering						
Support Planning	Bus-Rail Interface and Service Coordination Planning					Page 2	
	Short Range Transit Plan					Page 2	
	Transit Capital Facility Planning					Page 2	
	Transit System Configuration Studies					Page 2	
	Transit GIS Implementation and Use					Page 2	
	Regional Sustainability Issues					Page 6	
	Project/Facility Specific Sustainability Issues					Page 6	
	Regional Transit Oriented Development (TOD) Issues					Page 6	
	Project/Facility TOD Initiatives					Page 6	
	Peer City Research						
	FTA Policy Input						
	Seeking Transit Funding Sources						
	Transit System Performance Monitoring					Page 2	
	Transit Travel Demand Forecasting					Page 2	
Rideshare, Carpool, and Vanpool Programs		Regional rideshare, carpool, vanpool, telework programs		Rideshare funding and regional air quality planning			
Bicycle Planning and Safety Education		Bicycle safety education		Regional bicycle planning and design assistance			
Other Issues	MAG Transit Committee					Page 2	
	Regional Transit Coordination					Page 2	
	Progress Reporting					Page 3	
	RTP/TIP Public Involvement Process					Page 4	
	Air Quality					Page 3	
	Human Services Coordination Plan	Program Funding				Page 3	
MAG Work Program					Page 3		

Definition & Agreement on Roles & Responsibilities “The Fruit Salad Chart”

Primary Responsibility
 Support Role

		PTD	RPTA	METRO	MAG	MOU (effective March 31, 2010)	SB 1063 (effective July 29, 2010)
Programming	Transit Lifecycle Program (TLCP) / Public Transportation Fund		Transit Element	High Capacity Transit (HCT) element	Review and concurrence		48-5103
	TLCP Budget Process						48-5106
	TLCP Material Changes				Review and approval		48-5106
	Transportation Improvement Program (TIP)					Pages 2 and 4	
	Annual Formula Grant Process	Program of Projects			Review/approval/ possible ranking	Page 3	
	Annual Discretionary Grant Process				Review/approval/ possible ranking	Page 3	
System Planning	Transit Element of the Regional Transportation Plan (RTP)					Page 2	48-5121
	Transit Corridor Studies (prior to identification of project funding)					Page 6	
	Transit System Plans and Subregional Studies					Page 6	
Project Planning	RTP Project Planning (no AA required)				Review and concurrence	Page 6	
	RTP Project Planning (AA required)				Lead agency definition, review and concurrence	Page 6	
	Major Project Scoping Documents				Review and concurrence	Page 6	
	Environmental Planning						
	Project Planning During Engineering						
	Bus-Rail Interface and Service Coordination Planning					Page 2	
	Short Range Transit Plan					Page 2	
	Transit Capital Facility Planning					Page 2	
	Transit System Configuration Studies					Page 2	

Memorandum of Understanding MAG - Valley Metro - Phoenix

REGIONAL TRANSIT PLANNING, PROGRAMING, AND FUND ALLOCATION AGREEMENT

This AGREEMENT is between and among the Maricopa Association of Governments (MAG), the Regional Public Transportation Authority (RPTA), Valley Metro Rail (METRO), and the City of Phoenix (COP) regarding transit planning, programming and fund allocation. This AGREEMENT replaces the previous Transit Planning, Programming and Fund Allocation agreement dated April 6, 2010.

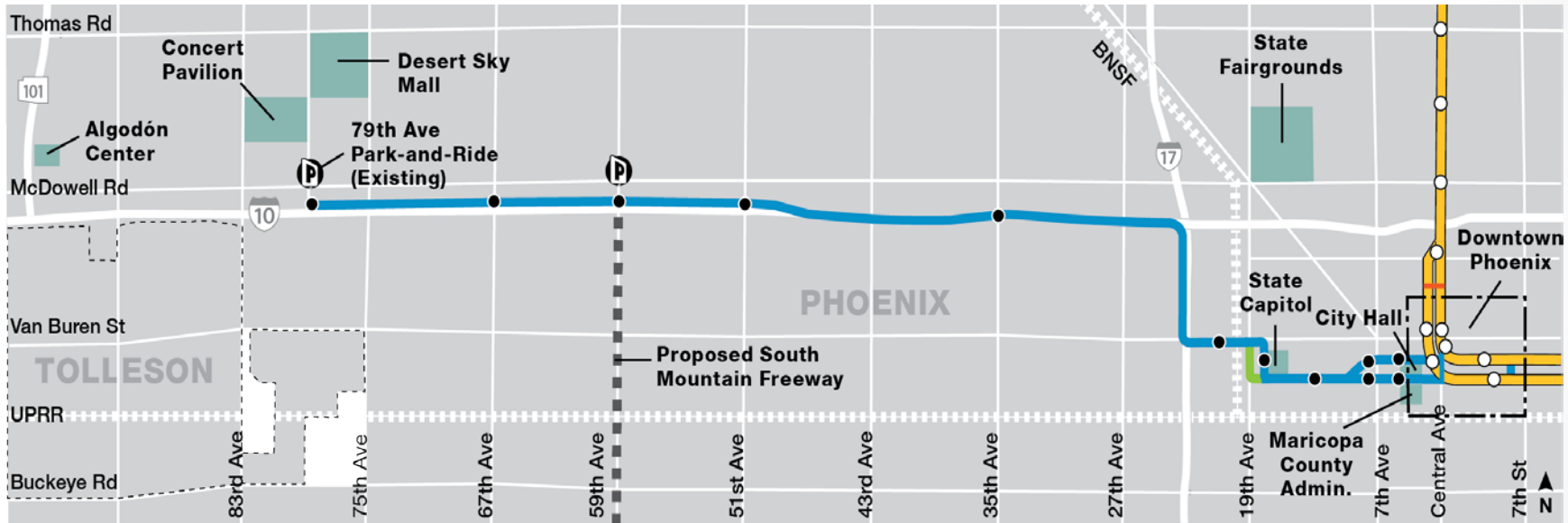
This AGREEMENT recognizes the transit operators in the MAG region are: RPTA, METRO, City of Phoenix, City of Coolidge, City of Glendale, City of Scottsdale, and City of Peoria.

This AGREEMENT recognizes the Central Arizona Regional Transit (CART) Partnership that is comprised of the Town of Florence, City of Coolidge, Pinal County, and Central Arizona College. The CART Partnership was created to plan and operate a regional transit system in Pinal County. The CART service currently runs service between Florence, Coolidge, Central Arizona College, and Casa Grande, and is operated by the City of Coolidge.

This AGREEMENT recognizes that final guidance and regulations related to Moving Ahead for Progress in the 21st Century Act (MAP-21) is pending and amendments/modifications may need to be made to this AGREEMENT.

Project Coordination

MAG – Valley Metro – Arizona DOT - Phoenix



LEGEND

- | | | |
|---------------------------|------------------------------------|--------------------------------------|
| Valley Metro Rail/Station | Proposed Station | McKinley St Turnaround Design Option |
| Build Alternative | Activity Center | City of Tolleson |
| Park-and-Ride | 19th Ave North/South Design Option | Unincorporated Maricopa County |

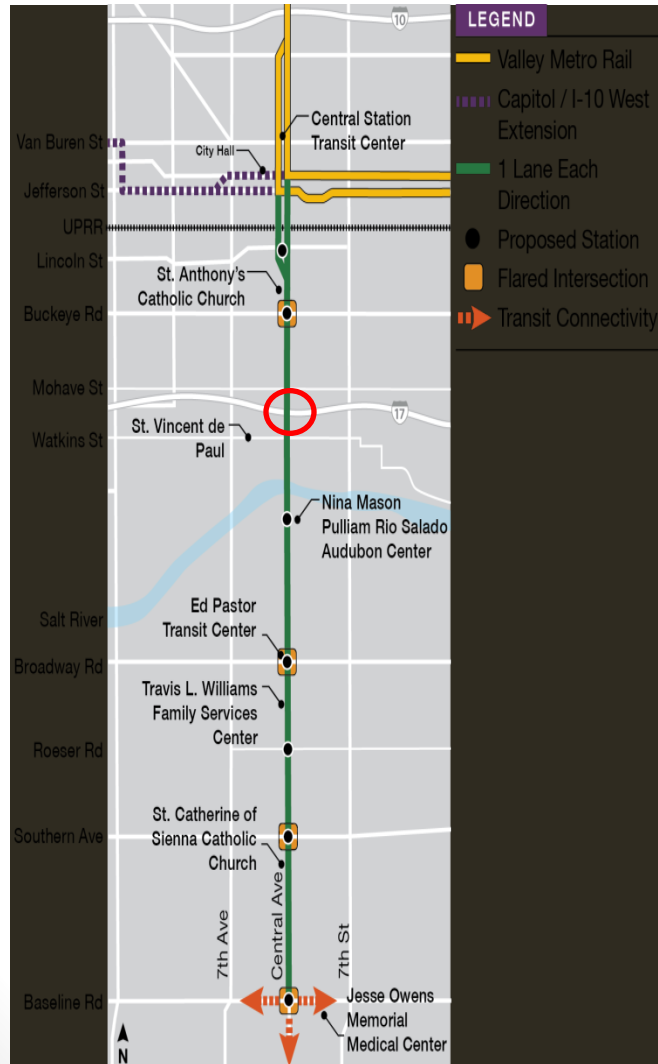
MEMORANDUM OF AGREEMENT
BETWEEN
VALLEY METRO RAIL INC.
AND
THE ARIZONA DEPARTMENT OF TRANSPORTATION
AND
THE MARICOPA ASSOCIATION OF GOVERNMENTS
AND
THE CITY OF PHOENIX

FOR

**THE PHOENIX WEST HIGH CAPACITY TRANSIT AND
FREEWAY IMPROVEMENTS**

July 2011

South Central LRT



- Central Avenue / I-17 bridge Structure
- Old structure & substandard height
- LRT rail construction may be in 2020
- Catenary attached to bottom of structure
- Options:
 - Leave structure, lower street and rearrange frontage roads
 - Rebuild bridge
- Series of I-17 improvements planned
 - Auxiliary lanes
 - Master Plan for I-17 underway

Joint Planning Advisory Council

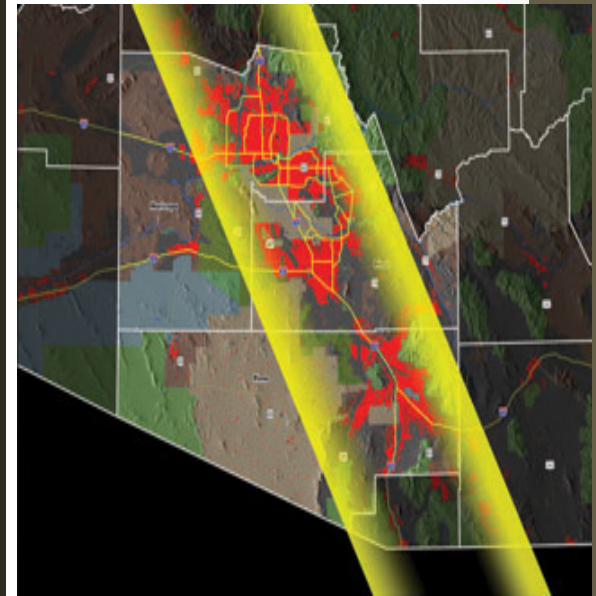
Formed December 2009

**RESOLUTION OF PLANNING COORDINATION WITH THE MARICOPA
ASSOCIATION OF GOVERNMENTS, PIMA ASSOCIATION OF GOVERNMENTS,
AND
CENTRAL ARIZONA ASSOCIATION OF GOVERNMENTS**

WHEREAS, the Maricopa Association of Governments (MAG), Pima Association of Governments (PAG), and Central Arizona Association of Governments (CAAG) desire to come together and jointly coordinate their planning efforts for the greater good of the regions and the State of Arizona; and

WHEREAS, the Maricopa Association of Governments, Pima Association of Governments, and Central Arizona Association of Governments are located adjacent to one another with linked economies and acknowledge that regional planning issues transcend jurisdictional boundaries; and

WHEREAS, the Maricopa Association of Governments, Pima Association of Governments, and Central Arizona Association of Governments collectively comprise 82 percent of the population of the State of Arizona based upon the July 1, 2008 official population estimates developed by the Arizona Department of Commerce and 85 percent of the April 2009 taxable sales; and



www.jpacaz.org

MAG / Sun Corridor MPO

Memorandum of Understanding

(in development)

- Adjacent MPO's required to have MOU
- Shared PM-10 & PM-2.5 non-attainment areas
- Coordination of TIP & Plan updates
- Travel Demand & Air Quality modeling
- Parties to the agreement:
 - Maricopa Association of Governments
 - Sun Corridor MPO
 - Arizona Department of Transportation
 - Arizona Department of Environmental Quality

Thank you

Eric Anderson
Transportation Director
Maricopa Association of Governments
(602) 254-6300
Eanderson@azmag.gov

COOPERATIVE TRANSIT PLANNING IN THE CHICAGO REGION

Regional Models of
Cooperation Webinar

October 16, 2015

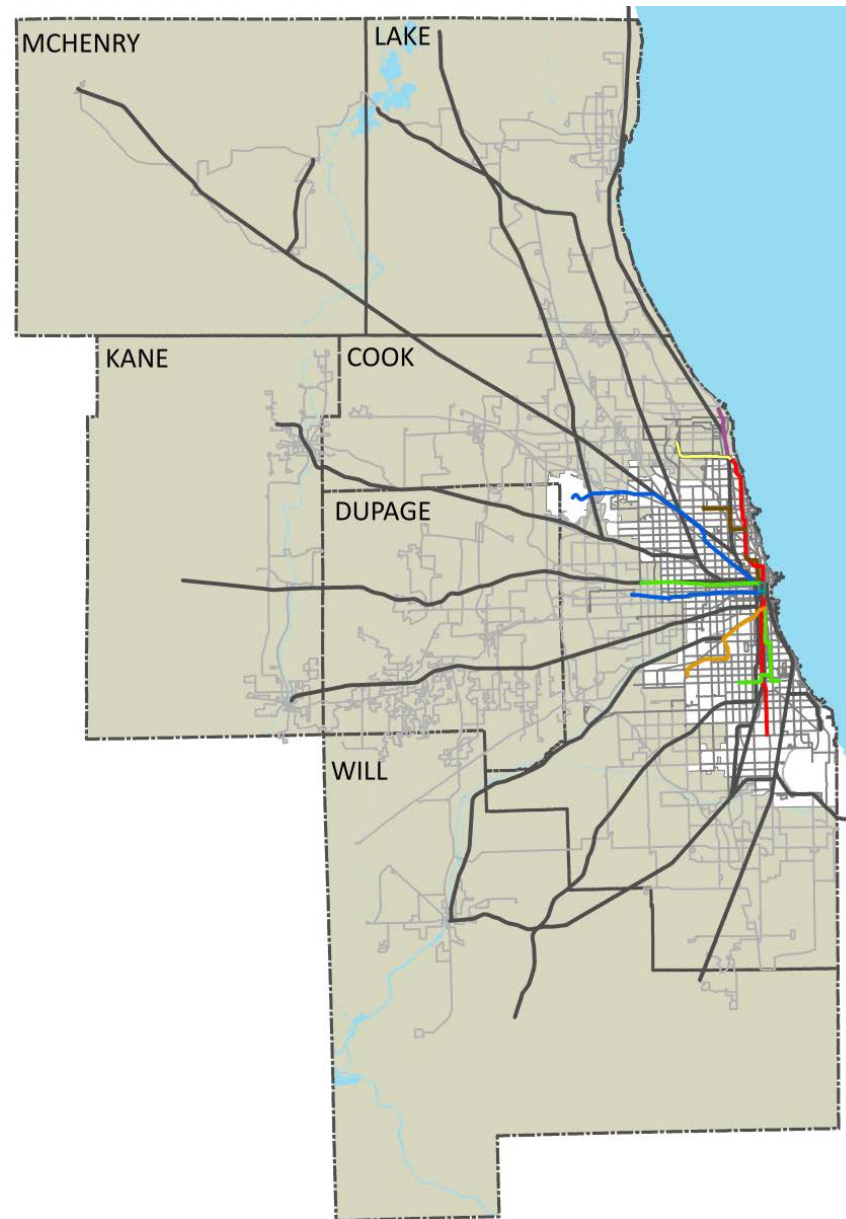
Mark Pitstick – RTA



MOVING YOU

THE RTA SYSTEM

- 2.2 million rides/day
- 7,000 route miles
- 6,300 bus & rail cars
- 6 counties
- 277 municipalities
- 9 million residents



AGENCIES AND ROLES

- RTA – Regional Transportation Authority
- Transit “Service Boards”
 - CTA – Urban Rail and Bus
 - Metra – Commuter Rail
 - Pace – Suburban Bus
- CMAP – Chicago Metropolitan Agency for Planning (MPO)
- Various DOT’s



Chicago Metropolitan Agency for Planning



U.S. Department of Transportation
Federal Transit Administration

THE MPO PROCESS

- MPO Policy Committee
- CMAP Board & Staff
- Transportation Committee
- CMAQ Project Selection
- Unified Work Program
- GO TO 2040 Plan



Chicago Metropolitan
Agency for Planning



TRANSIT STRATEGIC PLAN

- Developed cooperatively with CTA, Metra and Pace
- All agencies implement
- Annual Progress Report
- Working on next plan now



VISION

A world-class regional public transportation system providing a foundation to the region's prosperity, livability and vitality.

GOALS



Provide

valuable, accessible, and attractive transportation options



Ensure

financial viability



Promote

a green, livable and prosperous region



Continue to
Advocate

for and be a trusted steward of public transportation



COMMUNITY PLANNING

- Partner with municipalities and other agencies
- TOD, access, service and corridor plans
- Joint call for projects
- Service Board consultation
- Funding = UWP+RTA+Local
- 17 years, 170+ projects



U.S. Department of Transportation
Federal Transit Administration



Chicago Metropolitan
Agency for Planning



Regional
Transportation
Authority

ACCESS TO TRANSIT

- Implementation of plans
- Sidewalks, crosswalks, shelters, bike parking, etc.
- Municipality designs
- RTA applies for funds
- IDOT constructs
- Funding = CMAQ + RTA
- 4 pilot projects + 11 new



U.S. Department of Transportation
Federal Transit Administration



Chicago Metropolitan
Agency for Planning



INTERAGENCY SIGNAGE

- Partner with Service Boards and municipalities
- Wayfinding signs, service information and maps
- Transit transfer locations
- RTA designs, implements & maintains new products
- Funding = CMAQ + RTA
- 4 pilot locations + 19 new



U.S. Department of Transportation
Federal Transit Administration



TRANSIT SIGNAL PRIORITY

- Partner with CTA, Pace, DOT's
- Improve bus performance
- Multiple arterial corridors
- TSP Working Group
- Regional TSP Standards
- RTA manages program
- CTA and Pace implement
- Funding = CMAQ + RTA



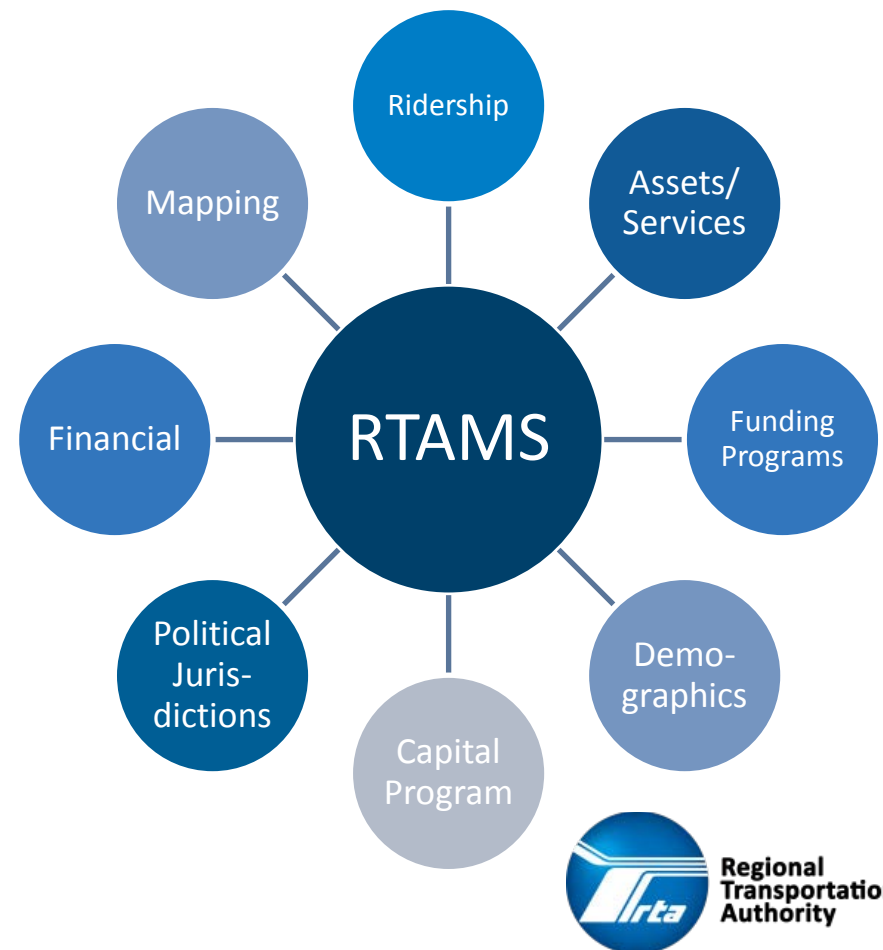
RIDE ON. MARKETING CAMPAIGN

- Partner with Service Boards
- Raise awareness
- Promote products/services
- On-line, print, billboards, radio, cable TV, etc.
- RTA manages program
- Funding = RTA



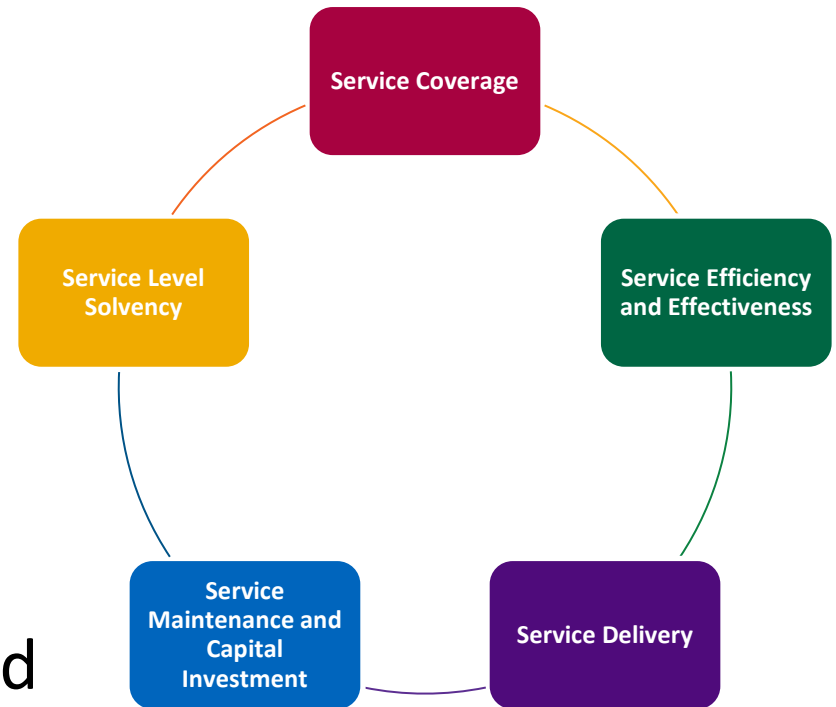
RTA MAPPING & STATISTICS (RTAMS)

- Regional Data Warehouse
 - Political Jurisdictions
 - Interactive Maps
 - Ridership
 - Services
 - Assets
 - Programs
- Available online
- www.RTAMS.org



PERFORMANCE MEASURES

- Developed cooperatively with CTA, Metra and Pace
- Performance Measures Task Force
- Use data from National Transit Database
- Regional, Sub-regional, and Peer Comparison Reports
- Various service measures



LESSONS LEARNED

- “Coordination” is not as easy as it sounds
- Sometimes money helps foster cooperation
- It can take a long time



www.RTAChicago.org

THANK YOU

Mark E. Pitstick, Ph.D.
Technical Advisor

312-913-3235

pitstickm@rtachicago.org



MOVING YOU



Questions?

- **Please enter your questions into the Q&A Pod on your screen**
 - The moderator will direct your question to the appropriate presenter.
 - Slides from today's presentation are available in the download pod
- **For more information on the Regional Models of Cooperation initiative, please visit:**
http://www.fhwa.dot.gov/planning/regional_models/



Thank You!

- **For more information on the Regional Models of Cooperation initiative, please visit:**

http://www.fhwa.dot.gov/planning/regional_models/

- **Contact:**

Jody McCullough,
FHWA Office of Planning
jody.mccullough@dot.gov
(202) 366-5001

Tonya Holland,
FTA Office of Planning
Tonya.Holland@dot.gov
(202) 493-0283

Dave Harris
FHWA Office of Planning
dave.harris@dot.gov
(202) 336-2825

