

Welcome to *The Planning Exchange*



TRANSPORTATION PLANNING INFORMATION EXCHANGE

TRANSPORTATION PLANNING CAPACITY BUILDING PROGRAM

Kenneth Petty

*FHWA, Office of Planning,
Environment, and Realty
TPCB, Team Leader*





Transportation Planning Capacity Building Planning for a Better Tomorrow

FHWA > HEP > TPCB

[Home](#)

[About TPCB](#)

[Peer Learning](#)

[TPCB Focus Areas](#)

[Publications & Resources](#)

[Training & Education](#)

TPCB Special Features

New TPCB Webinar Series

The Transportation Planning Information Exchange is a new FHWA/FTA webinar series providing training, technical assistance, and technical support for the transportation community.



TRANSPORTATION PLANNING INFORMATION EXCHANGE

Kick-off webinar featuring past TPCB peer program participants discussing the many resources offered by TPCB. May 22nd, 12:00 EDT. [Register now!](#)

TPCB Events Calendar

Learn about upcoming conferences, webinars, and other events related to transportation planning.



Check
the Calendar

What's New

New Publications:

- ▶ Trends in Statewide Transportation Plans Synthesis Report
- ▶ Best Practices in Planning: Metropolitan Transportation Plans

Upcoming Conferences/Webinars:

- ▶ Bus & Paratransit Conference
- ▶ Mobility Management Conference

New Peer Reports Available:

- ▶ Financial Planning at the MPO Level- Peer Report- NYMTC
- ▶ Arizona Department of Transportation e-STIP Peer Report

TPCB Key Resources

INFO

The Transportation Planning Process: Key Issues



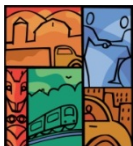
A Briefing Book for Transportation Decisionmakers, Officials, and Staff

DATA

Search the MPO Database



Find the name and contact information of the designated MPO for any metropolitan area over 50,000 in the nation.



Metropolitan Planning Organization Database

U.S. Department of Transportation
Federal Highway Administration/Federal Transit Administration

[FHWA Home](#) | [FTA Home](#) | [Feedback](#)



Transportation Planning Capacity Building Planning for a Better Tomorrow

[Search for Resources](#)

FHWA > HEP > TPCB > Focus Areas

[Home](#) | [About TPCB](#) | [Peer Learning](#) | [TPCB Focus Areas](#) | [Publications & Resources](#) | [Training & Education](#)

Metropolitan Planning Organization (MPO) Database

Federal transportation legislation requires that a Metropolitan Planning Organization (MPO) be designated for each urbanized area with a population of more than 50,000 people in order to carry out the metropolitan transportation planning process, as a condition of Federal aid.

As a result of the 2000 decennial Census, 76 new urbanized areas were identified; 47 of these lie outside the metropolitan planning area boundaries of any existing MPO. These areas will either have to establish and staff a new MPO, or merge with an existing MPO.

Additionally, a total of 48 new Transportation Management Areas (TMAs) were designated by the Secretary of Transportation as a result of increases in their urbanized area population or because of splits or mergers of urbanized areas within existing metropolitan planning area boundaries. TMAs generally are metropolitan areas with a population greater than 200,000.

Find an MPO (3 Search Methods)

Criteria Search: (Based on sq. mile area, population, designation year, and/or TMA)

OR

State Search: Alabama

OR

Keyword Search (MPO name, urbanized area, or city):

For more information about the TPCB program, contact [Michelle Noch](#) at FHWA (202-366-9206) or [John Sprowls](#) at FTA (202-366-5362).

Updated May 7, 2012

[FHWA Home](#) | [FTA Home](#) | [Privacy Statement](#) | [Website Feedback](#) | [Site Map](#)

 United States Department of Transportation





Transportation Planning Excellence Awards

- Biennial awards program
- Individual or organizations that used Federal funds to develop a plan, project, or planning process that demonstrates excellence
- Wide-range of categories

<http://www.fhwa.dot.gov/hep/awards.htm>



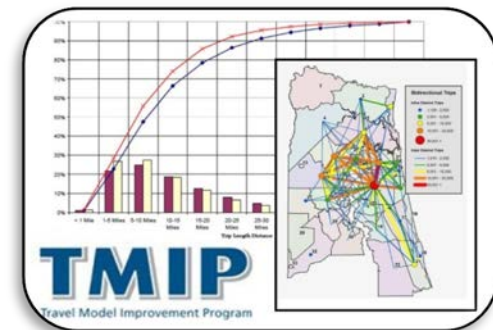
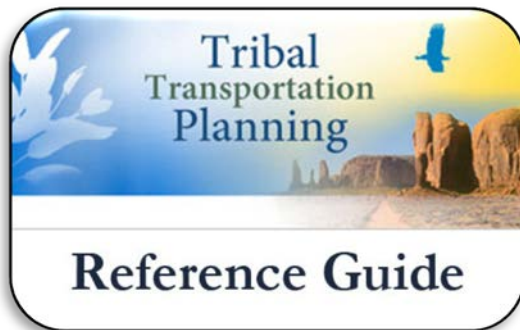
Tribal Resources

- Tribal transportation planning modules
- Technical assistance
- Tribal focus page
- Tribal planning handbook
- Case studies



Other Program Areas of Interest

- Access to free resources
- Webinar series
- Visualization tools
- Grant opportunities



**Has your agency applied
for a TPCB peer exchange?**



Peer Exchange Program

- Apply for an exchange, workshop or roundtable
- Listen to live and recorded webinars
- Eligible applicants to the peer program include:
 - State DOTs
 - Metropolitan Planning Organizations
 - Transit Operators
 - Tribal Governments
 - Other transportation decision-makers



U.S. Department of Transportation
Federal Highway Administration/Federal Transit Administration

EHWA Home | ETA Home | Feedback

Transportation Planning Capacity Building Planning for a Better Tomorrow

Search for Resources

FHWA > HEP > TPCB > Peer Learning

Home | About TPCB | Peer Learning | TPCB Focus Areas | Publications & Resources | Training & Education

TPCB Peer Program "Sharing Planning Solutions"

Sharing Peer Planning Solutions

Professionals at all levels need resources that help them gather knowledge, build their skills, and stay "ahead of the curve." The Transportation Planning Capacity Building (TPCB) Program responds to this need by organizing, facilitating, and documenting events in order to share noteworthy practices among agencies facing an increasingly complex transportation planning environment through the Peer Program and the Scenario Planning Program. TPCB also highlights excellence in transportation planning through the biennial Transportation Planning Excellence Awards (TPEA) Program.

To learn more, click here to [read summaries of past peer events](#).

For information on how to apply for peer assistance, visit the [Peer Program Application page](#).

For more information on the Transportation Planning Excellence Awards (TPEA) Program please visit the [TPEA web page](#).

Flexible

Each peer event is designed to suit the specific needs of applicant agencies. Dialogue and information sharing among transportation planning agencies is offered in a variety of formats, corresponding to different levels and types of need.

- **Peer Exchange:** One-on-one site visits and small-group discussion of specific, shared transportation planning issues that respond to agencies' direct needs.
- **Peer Workshop:** Peer experts train other agencies in the use of specific transportation planning tools and/or techniques during site visits or in conjunction with conferences.
- **Peer Roundtable:** Half- or full-day panel or roundtable discussions of innovative transportation practices at conferences by recognized national experts and/or agency representatives who have successfully implemented the practices being highlighted.

Comprehensive

Categories for the peer exchanges and the TPEA awards are derived from a wide range of transportation planning and policy issues and may include (but are not limited to) the following list. For a complete list of TPEA awards categories and explanations please visit the [TPEA categories web page](#).

- Asset Management
- Air Quality Conformity
- Bicycle and Pedestrian Facilities Planning
- Climate Change and Transportation
- Complete Streets
- Data/Information Management
- Environmental Issues
- Financial Planning and Forecasting
- Freight
- Interested Party Participation
- Land Use and Transportation
- Management and Operations
- Metropolitan/Regional Planning
- MPO Organization and Structure
- Performance Measures
- Rural/Small Community Planning
- Statewide Planning



http://planning.dot.gov/peer_app.asp



Next: Peer Exchange Success Story



"Transportation and a More Livable Future"

Watch "Transportation and a More Livable Future".

< || >

This video thumbnail features a cityscape at dusk with a person's silhouette in the foreground. The text "Transportation and a More Livable Future" is overlaid in white. At the bottom, there is a caption and navigation icons.

ARC
ATLANTA REGIONAL COMMISSION
PLAN
2040

Learn more about metro Atlanta's plan for sustainable economic and population growth over the next 30 years.

< || >

This video thumbnail shows a city skyline and a modern building. The ARC logo and "PLAN 2040" are prominently displayed. The bottom section contains a descriptive caption and navigation icons.

REGIONAL
TRANSPORTATION
REFERENDUM
July 31, 2012

Please click here for more information.

< || >

This video thumbnail depicts a highway interchange with light trails from cars. The text "REGIONAL TRANSPORTATION REFERENDUM" and the date "July 31, 2012" are overlaid. The bottom section includes a call to action and navigation icons.

PEER PROGRAM

Dan Reuter

Land Use Chief

Atlanta Regional Council



LCI Peer Exchange: Aug. 30-31, 2010

Six peer regions will come to Atlanta to engage in detailed discussions regarding their efforts to link land use and transportation initiatives.

1. Metropolitan Transportation Commission (MTC), serving San Francisco area
2. Portland Metro
3. Delaware Valley Regional Planning Commission (DVRPC)
4. North Central Texas Council of Governments (NCTCOG)
5. Albany Capitol District Transportation Committee (CDTC)
6. Denver Regional Council of Governments (DRCOG)



Peer Exchange: *Best Practices in MPO Livability Programs*

Two primary goals:

1. Identify best practices and lessons learned from MPO livability programs that promote smart growth and TOD in order to inform future program development for ARC's Livable Centers Initiative (LCI)
2. Provide input on the accomplishments and value of MPO livability programs to inform future U.S. DOT capacity building, technical assistance, guidance, and regulation



Key Findings about MPO Livability Programs

- Creating a livability program can be a unique and effective opportunity for MPOs to build relationships with local officials, staff, and the public to support greater transportation and land use integration
- There is no “one size fits all” approach to creating a livability program
- Communication and careful language choice are critical to gain buy-in from elected officials, developers, and the public



Key Findings (continued)

- Current Federal transportation planning guidance and funding sources provide a good foundation for experimenting with multimodal transportation planning
- Reaching out and building effective inter-agency partnerships is critical to developing a meaningful livability program
- Partnerships with non-transportation agencies and organizations can help MPOs bring new stakeholders to the table



Livable Centers Initiative (LCI) Program



LCI Studies Seek:

- **Mix of land uses**
- **Multiple transportation modes**
- **Robust stakeholder involvement**

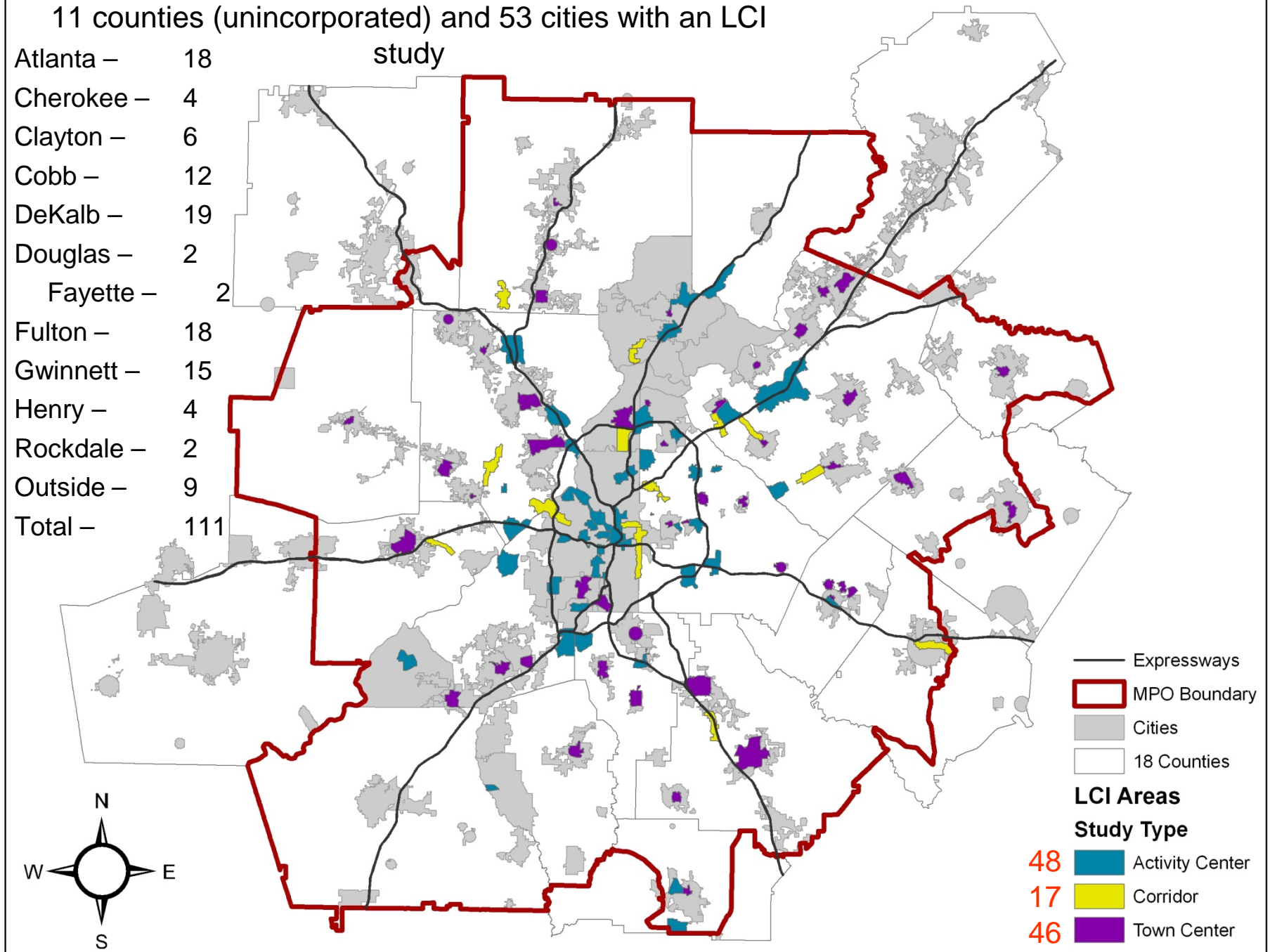
- Encourages local governments to implement strategies that link transportation projects with development
- Links implementation actions to receipt of transportation project funding
- Takes advantage of existing infrastructure in centers and corridors



11 counties (unincorporated) and 53 cities with an LCI study

Atlanta –	18
Cherokee –	4
Clayton –	6
Cobb –	12
DeKalb –	19
Douglas –	2
Fayette –	2
Fulton –	18
Gwinnett –	15
Henry –	4
Rockdale –	2
Outside –	9
Total –	111

study



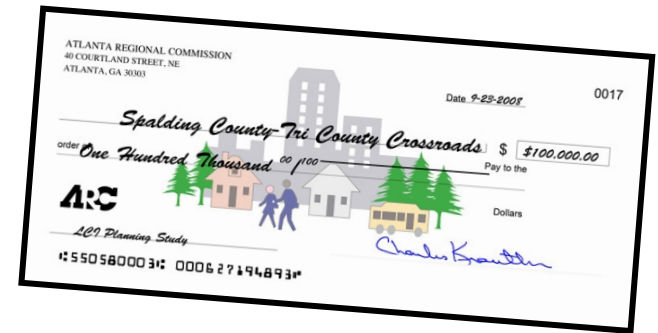
- Expressways
- ▭ MPO Boundary
- ▭ Cities
- ▭ 18 Counties

- LCI Areas**
- Study Type**
- 48 ▭ Activity Center
 - 17 ▭ Corridor
 - 46 ▭ Town Center

LCI Funding

- Resolution adopted by ARC Board in 1999 creating LCI. PLAN 2040 continues LCI studies through 2017.
- \$18 million for studies over 18 years
- \$500 million for transportation projects through 2040
- Uses STP-Urban (L230) funds
- 72 Supplemental Studies awarded
- \$4,296,500 total funding for Supplemental Studies
- Report available:

http://www.planning.dot.gov/Peer/Atlanta/atlanta_2010.pdf



Participating Agencies and Organizations

Federal Government

- U.S. DOT - Volpe Center
- FTA - Office of Planning and Environment
- FHWA - Office of Livability
- FHWA - Office of Planning
- FHWA - Resource Center
- EPA Region 4
- FHWA GA Division
- FTA Region IV

- Centers for Disease Control and Prevention

Georgia

- GDOT - Office of Planning
- MARTA
- Georgia Regional Transportation Authority

Atlanta

- ARC Land Use Division
- ARC Transportation Division
- ARC Governmental Services Division
- ARC Aging Division

Nonprofit

- Reconnecting America
- ULI Atlanta
- Livable Communities Coalition



Submit a question using the chat box



Or



*1 to ask a question by phone



TRANSPORTATION PLANNING CAPACITY BUILDING PROGRAM

John Sprowls

FTA, Office of Planning and Environment

TPCB, Program Manager



Publications and Resources

- Briefing Book for Transportation Decisionmakers, Officials, and staff
- FTA Transit at the Table Series
- FHWA Scenario Planning Guidebook
- Best Planning Practices: Metro Transportation Plans
- A Guide to Transportation Decisionmaking





Transportation Planning Capacity Building

Planning for a Better Tomorrow

FHWA > HEP > TPCB > Publications

- [Home](#)
- [About TPCB](#)
- [Peer Learning](#)
- [TPCB Focus Areas](#)
- [Publications & Resources](#)**
- [Training & Education](#)

Search for Resources

Transportation Planning Capacity Building (TPCB) Resource Index

The TPCB Resource Index is a database of all resources found on the TPCB website. Search the resource index by selecting a resource type, category, and/or planning level from the list below. Your search results will display a broad range of resources on that topic from a variety of sources including: FHWA, other U.S. DOT agencies, other Federal agencies, state and local governments, MPOs, and non-government organizations.

In the boxes below, select one or more terms by holding down the Control <Ctrl> button on your keyboard. You can also select terms in one or more of the boxes. The more terms you select, the fewer resources will be returned.

Resource Type:

Category:

Planning Level:

- All
- Event
- Past Event
- Upcoming Event
- Legislation, Regulations, and Guidance

- All
- Agency Structure and Governance
- Air Quality-Transportation
- Bicycle and Pedestrian Planning
- Climate Change

- All
- Statewide
- Metropolitan
- Rural and Small Community
- Tribal

Key Word Search:

Find Results with **all** of the words

with **the exact phrase**

with **at least one** of the words

Occurrences Return results where my terms occur

For more information about the TPCB program, contact [Michelle Noch](#) at FHWA (202-366-9206) or [John Sprowls](#) at FTA (202-366-5362).



TPCB Focus Areas

Focus Areas



[Statewide Planning](#)

The Statewide Planning focus area page provides information on resources about the statewide transportation planning process.



[Rural and Small Community Planning](#)

The Rural and Small Community Planning focus area page is a one-stop shop for resources about transportation planning in rural and small communities.



[Public Lands Planning](#)

The Public Lands Planning focus area page is a one-stop shop for resources about transportation planning for public lands.



[Performance Based](#)

This focus area page is a one-stop shop for resources about performance-based planning and performance measures on the TPCB website.



[Metropolitan Transportation Planning](#)

This section of the TPCB website provides information on resources about the metropolitan transportation planning process.



[Tribal Planning](#)

The Tribal Planning focus area page is a one-stop shop for resources about tribal transportation planning, consultation, and coordination.



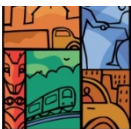
[Transit at the Table](#)

The FTA sponsored a series of publications, supported by peer events and roundtables, called "Transit at the Table" that identifies ways for transit agencies to effectively participate in metropolitan and statewide transportation planning.



[Public Involvement](#)

The Public Involvement focus area page is a one-stop shop for resources about public involvement and equity in transportation planning on the TPCB website.



Focus Areas

Transit at the Table

In order for transit to play a meaningful role in creating sustainable transportation systems, transit agencies have to become more meaningful and pro-active partners in the Federal transportation planning and programming process. In order to get transit at the table (i.e., included in plans, funded, and built), transit agencies must first make their way to the table and actively participate in transportation decision-making. Recognizing that this may not be a traditional role for many transit agencies, the FTA sponsored a series of publications, supported by peer events and roundtables, called "Transit at the Table" that identifies ways for transit agencies to effectively participate in metropolitan and statewide transportation planning.



RESOURCES and Publications

- [Transit at the Table I](#) - Explores how transit agencies in larger metropolitan areas (more than 200,000 in population) could be more effective partners with MPOs in the metropolitan transportation planning and programming process.
- [Transit at the Table II](#) - Explores how transit agencies in smaller metropolitan areas (populations between 50,000 and 200,000) could be more effective partners with MPOs in the metropolitan transportation planning and programming process.
- [Transit at the Table III](#) - Explores how transit agencies in non-urbanized and rural areas can be more effective partners with state departments of transportation (DOTs) and other entities in the statewide transportation planning and programming process. View the [text-only version](#) of Transit at the Table III. You can also view the report by section: [Chapter 1](#) - [Chapter 2](#) - [Chapter 3](#) - [Chapter 4](#) - [Appendix A](#) - [Appendix B](#) - [Appendix C Discussion Guides](#)
- Recent publications on transit planning:
 - [Supporting Sustainable Rural Communities](#)
 - [Transportation Planning Capacity Building: A Two Year Review: Federal Fiscal Years 2009-2010](#)
 - [Forging Transit-Bicycle-Pedestrian Partnerships for Livable, Sustainable Communities](#)
 - [Effective Practices in Title VI Transit Equity Analysis for Major Transit Service and Fare Changes](#)
- To find existing publications and resources related to Transit at the Table or to add new ones, visit the [TPCB Resource Index](#).



Eight states have case studies for Transit at the Table III. Click on a highlighted state to read that case study.

CALENDAR of Events

- Upcoming conferences and webinars related to Transit at the Table:
 - [CTAA EXPO](#)
 - [International Rail Rodeo](#)
 - [Rail Conference](#)

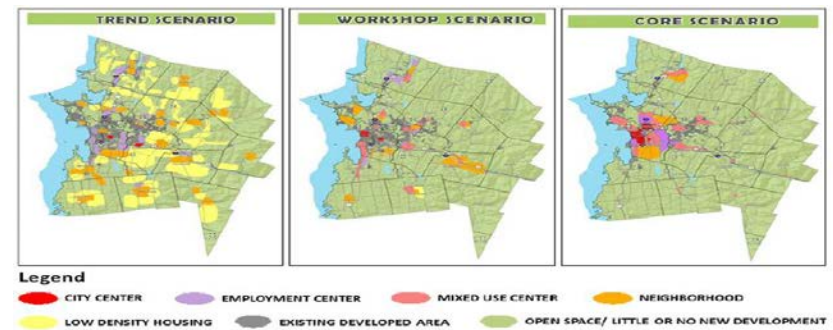
To browse all events on the TPCB website or to add new ones, please visit the [events calendar](#) or the [TPCB Resource Index](#).



Scenario Planning Program

Offers several resources for transportation agencies:

- Customized training workshops and webinars
- Scenario Planning Guidebook
- Biannual webinar series
- Research on scenario planning trends and best practices



Next: Scenario Planning Participant Perspective

“This was a very informative and useful workshop. These techniques will help us to move Birmingham forward [and make] smarter investments in transportation.”

-Birmingham workshop participant



Workshop participants during a discussion session (image courtesy of RPCGB).



SCENARIO PLANNING PEER PROGRAM

Lew Villotti

*Planning & Development Director
Southwestern Pennsylvania Commission*



Introduction to TPCB

- Peer for Birmingham, Alabama
- Topic was Scenario Planning
- SPC adopted a scenario based plan in 2007
- Started explore the process in 2004
- Didn't know TCBP existed
- Had to figure it out on our own



Process

- Well planned
 - Spend time on the details
- Good Team
 - Team member selection is critical
 - Suited for the recipient's needs and situation
- Strong recipient input
 - Listen to the recipient
 - Only get out what you put in



Process

- Regular contact
 - Conference calls, emails, etc.
- Active participation
 - Don't be shy
- Technical session
 - Staff
- Policy session
 - Broader audience



SPC's Role

- Share our experience
 - Strengths, weaknesses, what we would do different.
- Serve as advisor
 - Listen to recipients concerns offer advice.



Peer Role Benefit

- Networking
 - Met peers in similar situations to ourselves.
- Education
 - Learned as much from them as they learned from us, on multiple topics,
- Experiences
 - Used the experiences of the entire team to improve our own process.



Summary

- Excellent process
- Wish we had held our own peer exchange
- Think it through
- Listen to the pros
- The more you put into it, the more you'll get out of it



Submit a question using the chat box



Or



*1 to ask a question by phone



For more information

John Sprowls: john.sprohls@dot.gov

Michelle Noch: michelle.noch@dot.gov

www.planning.dot.gov

