



NHI Newsletter

September 2011

Improving the Performance of the Transportation Industry
Through Training

IN THIS ISSUE

- New NHI Video
- October Sessions
- Course Spotlight
- Transportation in the News

OCTOBER TRAINING SESSIONS

Interested in taking an NHI training course in October?

There are more than 25 NHI courses currently scheduled across the country in the month of October. Visit the [NHI Web site](#) to see a list of next month's training sessions.

If you can't make it to any of NHI's in-person, Instructor-led trainings, you can always take a self-paced, Web-based training (WBT). NHI now offers more than 100 WBTs. Click [here](#) to see a complete list of NHI's WBTs.

TRANSPORTATION IN

Check Out NHI's New Video

The introductory video provides an overview of NHI's mission, history, and products and services. To learn more about what NHI has to offer, watch the video on the [NHI Web site](#).

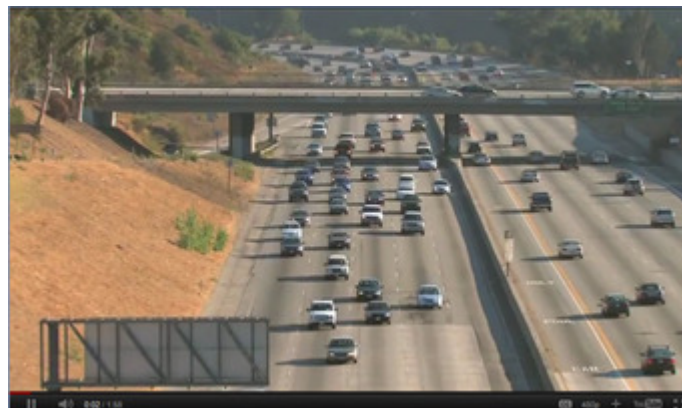


Image of the NHI Video.

New Course Spotlight: Using IHSDM (380100)

The Interactive Highway Safety Design Model (IHSDM) is a suite of software tools that quantitatively analyze and evaluate safety and operational effects of geometric design

THE NEWS

[DOT Secretary's Blog](#)

[AASHTO Journal](#)

[ASCE News](#)

QUESTIONS?

E-mail NHI Marketing
at
nhimarketing@dot.gov

decisions on two-lane rural highways. FHWA expanded the IHSDM Crash Prediction Module (CPM) in 2010 to implement the Highway Safety Manual's Part C, which highlights predictive methods for estimating the expected average crash frequency of a network, facility, or individual site. The IHSDM contains six evaluation modules: Crash Prediction, Policy Review, Design Consistency, Intersection Review, Traffic Analysis, and Driver Performance/Vehicle Dynamics.

The IHSDM course is a highly-interactive training, which gives participants the opportunity to use the actual IHSDM software tools to evaluate and analyze real highway designs. NHI recently updated the delivery format and training materials for the course. The revised training materials reflect the expanded CPM and the new delivery format consists of four hours of self-paced, Web-based trainings and four two-hour sessions of virtual, Instructor-led trainings, known as Web-conference training.

This course is intended for personnel working on highway design projects who will be directly interacting with the IHSDM software tools or applying the data generated by them. The IHSDM course benefits highway design project managers, planners, designers, safety engineers, and other personnel responsible for reviewing operations and safety on rural highways. Participants should have general familiarity with highway design elements and terminology.

Please visit the [NHI Web site](#) to learn more about hosting or participating in this course.