

NEW MANUFACTURERS HANDBOOK

Requirements for Manufacturers of Motor Vehicles
and Motor Vehicle Equipment



TABLE OF CONTENTS

Contents

CHAPTER 1. BACKGROUND	5
A. FEDERAL STATUTES AND REGULATIONS.....	5
B. HOW AND WHY WERE THE FEDERAL MOTOR VEHICLE SAFETY STANDARDS DEVELOPED?.....	5
C. MOTOR VEHICLE AND MOTOR VEHICLE EQUIPMENT CERTIFICATION	5
D. PENALTIES FOR VIOLATIONS OF THE VEHICLE SAFETY ACT AND IMPLEMENTING REGULATIONS	6
CHAPTER 2. WHAT DOES NHTSA REGULATE?	6
A. MOTOR VEHICLES.....	6
<i>Table 1 – Motor Vehicle Type Classifications</i>	6
B. MOTOR VEHICLE EQUIPMENT	7
<i>Table 2 – Motor Vehicle Equipment Items Subject to the FMVSS</i>	7
CHAPTER 3. PROCEDURAL REQUIREMENTS FOR FABRICATING MANUFACTURERS	8
A. INTRODUCTION.....	8
B. PART 551 - DESIGNATE A PERMANENT RESIDENT OF THE UNITED STATES AS ITS AGENT FOR SERVICE OF PROCESS .	8
C. PART 566 - MANUFACTURER IDENTIFICATION	8
<i>Table 3 - Examples of Assumed / Fictitious Business Names</i>	9
CHAPTER 4. VEHICLE IDENTIFICATION NUMBERS	9
A. VEHICLE IDENTIFICATION NUMBER OR VIN	9
B. VIN LOCATION ON VEHICLES	10
C. VIN CONTENT.....	10
<i>Chart 1 - General VIN Format</i>	10
<i>First Section of the VIN</i>	11
<i>Chart 2 - Placement of the World Manufacturer Identifier in the VIN</i>	11
<i>Obtaining a World Manufacturer Identifier</i>	11
<i>Second Section of the VIN</i>	11
<i>Chart 3 - Vehicle Attributes for Each Vehicle Type that must be Identified in VIN Positions 4 through 8</i>	12
<i>Chart 4 – Definitions and Examples of Vehicle Attributes</i>	13
<i>Passenger Car Manufacturer’s Sample VIN for the Second Section of the VIN (Positions 4-8)</i>	14
<i>Sample Passenger Car Manufacturer’s Lookup Table for the Second Section of the VIN (Positions 4-8)</i>	14
<i>Motorcycle VINs</i>	15
<i>Motorcycle Manufacturer’s Sample VIN for the Second Section of the VIN (Positions 4-8)</i>	15
<i>Sample Motorcycle Manufacturer’s Lookup Table for the Second Section of the VIN (Positions 4-8)</i>	15
<i>Trailer VINs</i>	15
<i>Trailer Manufacturer’s Sample VIN for the Second Section of the VIN (Positions 4-8)</i>	16
<i>Sample Trailer Manufacturer’s Lookup Table for the Second Section of the VIN (Positions 4-8)</i>	16
<i>Second Section VIN Character Restrictions</i>	17
<i>Third Section of the VIN</i>	17
<i>49 CFR 565.15(c)(1) Table III – Values Assigned to Characters of VIN</i>	17
<i>49 CFR 565.15(c)(2) Table IV – Weight Factors Assigned to VIN Positions 1-8 and 10-17</i>	17
<i>49 CFR 565.15(c)(4) Table V – 9th Position Check Digit Values</i>	18
<i>Fourth Section</i>	19
<i>Fourth Section of the VIN - Model Year Placement</i>	19
<i>49 CFR 565.15(d)(1) - Table VII – Required Year Codes for VIN</i>	19
<i>Manufacturer’s Sample VIN for the Fourth Section of the VIN (Positions 10-11)</i>	20
<i>Manufacturer’s Lookup Table for the Fourth Section of the VIN (Positions 10 and 11)</i>	20
D. MANUFACTURER’S REQUIREMENT TO FURNISH NHTSA WITH VIN DECIPHERING INFORMATION	21
CHAPTER 5. CERTIFICATION TO ALL APPLICABLE FMVSS	21

A. INTRODUCTION.....	21
B. MOTOR VEHICLE EQUIPMENT CERTIFICATION AND NHTSA ASSIGNED CODES	21
C. MOTOR VEHICLE CERTIFICATION	22
D. MOTOR VEHICLE CERTIFICATION LABELS	22
i. Placement of the Certification Label	22
ii. Motor Vehicle Certification Label Content.....	22
iii. Certification Requirements for Vehicles Manufactured in Two or More Stages.....	23
TABLE 4 - CERTIFICATION LABEL CONTENT REQUIREMENTS BY MANUFACTURER TYPE	24
iv. Certification Label Suppliers	24
CHAPTER 6. THE FEDERAL MOTOR VEHICLE SAFETY STANDARDS.....	24
A. FMVSS ISSUANCE.....	24
B. FMVSS ORGANIZATION UNDER 49 CFR PART 571.....	24
C. FMVSS APPLICABILITY	25
D. REFERENCE TABLE IDENTIFYING FMVSS APPLICABILITY BY VEHICLE TYPE AND EQUIPMENT ITEMS	25
CHAPTER 7. TIRE INFORMATION LABELING REQUIREMENTS	26
<i>Figure 1 – Tire Placard.....</i>	<i>26</i>
CHAPTER 8. DUTY TO NOTIFY NHTSA OF A NONCOMPLIANCE WITH AN FMVSS OR A SAFETY-RELATED DEFECT	26
CHAPTER 9. DUTY TO NOTIFY OWNERS AND DEALERS AND PROVIDE A REMEDY FOR A NONCOMPLIANCE OR A SAFETY-RELATED DEFECT	27
CHAPTER 10. RECORD KEEPING FOR MANUFACTURERS	27
A. TIRES	27
B. CHILD RESTRAINTS.....	27
C. MOTOR VEHICLES AND EQUIPMENT	27
CHAPTER 11. EARLY WARNING REPORTING	28
CHAPTER 12. OTHER STATUTORY/REGULATORY REQUIREMENTS	29
A. THEFT PREVENTION	29
B. BUMPER STANDARDS	29
C. FUEL ECONOMY	29
D. DOMESTIC CONTENT LABELING	29
E. CONSUMER INFORMATION	29
CHAPTER 13. NHTSA CONTACTS.....	30
<i>Table 5 – NHTSA Contacts.....</i>	<i>30</i>
CHAPTER 14. ADDITIONAL RESOURCES.....	31
<i>Table 6 – Additional Resources</i>	<i>31</i>
CHAPTER 15. HELPFUL HINTS	31
A. MANUFACTURER’S STATEMENTS OF ORIGIN OR CERTIFICATES OF ORIGIN.....	31
B. SEARCH THE UNITED STATES CODE	32
C. SEARCH THE CODE OF FEDERAL REGULATIONS.....	32
D. SEARCH THE FEDERAL REGISTER.....	32
E. SEARCH NHTSA INTERPRETATIONS	32
F. FMVSS COMPLIANCE TEST PROCEDURES.....	32
G. MOTORCYCLE AND MOTORCYCLE FRAME ENGINEERING REPORTS	32
APPENDICES	33
APPENDIX 1 - PART 551 - DESIGNATE A PERMANENT RESIDENT OF THE UNITED STATES AS ITS AGENT FOR SERVICE OF PROCESS.....	33
APPENDIX 2 - PART 566 MANUFACTURER IDENTIFICATION.....	35

APPENDIX 2 - (CONTINUED) PART 566 MANUFACTURER IDENTIFICATION	36
APPENDIX 3 - SAMPLE SPREADSHEET FORMAT TO CALCULATE A VIN CHECK DIGIT	37
APPENDIX 4 – PART 565 VEHICLE IDENTIFICATION NUMBER - TRAILERS.....	38
APPENDIX 4 (CONTINUED) – PART 565 VEHICLE IDENTIFICATION NUMBER - TRAILERS	39
APPENDIX 4 (CONTINUED) – PART 565 VEHICLE IDENTIFICATION NUMBER - MOTORCYCLES	40
APPENDIX 4 (CONTINUED) – PART 565 VEHICLE IDENTIFICATION NUMBER - MOTORCYCLES	41
APPENDIX 4 (CONTINUED) – PART 565 VEHICLE IDENTIFICATION NUMBER – MULTIPURPOSE PASSENGER VEHICLES	42
APPENDIX 4 (CONTINUED) – PART 565 VEHICLE IDENTIFICATION NUMBER - MULTIPURPOSE PASSENGER VEHICLES	43
APPENDIX 4 (CONTINUED) – PART 565 VEHICLE IDENTIFICATION NUMBER – PASSENGER CARS	44
APPENDIX 4 (CONTINUED) – PART 565 VEHICLE IDENTIFICATION NUMBER – PASSENGER CARS	45
APPENDIX 5 – SUGGESTED NEW TIRE MANUFACTURER APPLICATION	46
APPENDIX 5 (CONTINUED) – SUGGESTED NEW TIRE MANUFACTURER APPLICATION	47
APPENDIX 5 (CONTINUED) – SUGGESTED RETREADED TIRE MANUFACTURER APPLICATION	48
APPENDIX 5 (CONTINUED) – SUGGESTED RETREADED TIRE MANUFACTURER APPLICATION	49
APPENDIX 5 (CONTINUED) – SUGGESTED BRAKE HOSE MANUFACTURER APPLICATION	50
APPENDIX 5 – (CONTINUED) SUGGESTED GLAZING MANUFACTURER APPLICATION	52
APPENDIX 5 – (CONTINUED) SUGGESTED GLAZING MANUFACTURER APPLICATION	53
APPENDIX 6 – PART 567 CERTIFICATION LABELS.....	54
<i>Sample manufacturer’s certification label for a motorcycle/motor-driven cycle.....</i>	54
<i>Sample manufacturer’s certification label for a trailer.....</i>	54
<i>Sample manufacturer’s certification label for a low-speed vehicle.....</i>	54
<i>Sample manufacturer’s certification label for a multipurpose passenger vehicle</i>	54
APPENDIX 6 (CONTINUED) – PART 567 CERTIFICATION LABELS	55
<i>Sample manufacturer’s certification label for a truck.....</i>	55
<i>Sample manufacturer’s certification label for a passenger car.....</i>	55
<i>Associated passenger car tire placard</i>	55
APPENDIX 8 – HOW TO SEARCH NHTSA’S MANUFACTURERS’ INFORMATION DATABASE.....	57
APPENDIX 8 (CONTINUED) - HOW TO SEARCH NHTSA’S MANUFACTURERS’ INFORMATION DATABASE.....	58
APPENDIX 8 (CONTINUED) - HOW TO SEARCH NHTSA’S MANUFACTURERS’ INFORMATION DATABASE.....	59
APPENDIX 8 (CONTINUED) - HOW TO SEARCH NHTSA’S MANUFACTURERS’ INFORMATION DATABASE.....	60
APPENDIX 8 (CONTINUED) - HOW TO SEARCH NHTSA’S MANUFACTURERS’ INFORMATION DATABASE.....	61
APPENDIX 8 (CONTINUED) - HOW TO SEARCH NHTSA’S MANUFACTURERS’ INFORMATION DATABASE.....	62
APPENDIX 9 - FMVSS APPLICABILITY TO VEHICLE TYPE AND EQUIPMENT ITEMS.....	64
APPENDIX 9 (CONTINUED) - FMVSS APPLICABILITY TO VEHICLE TYPE AND EQUIPMENT ITEMS	65
APPENDIX 9 (CONTINUED)- FMVSS APPLICABILITY TO VEHICLE TYPE AND EQUIPMENT ITEMS	67
APPENDIX 10 – SAMPLE TIRE REGISTRATION FORM – INDEPENDENT DISTRIBUTORS AND DEALERS	68

Requirements for Manufacturers of Motor Vehicles and Motor Vehicle Equipment Items

Disclaimer – This document is a simplified description of the requirements for manufacturers of motor vehicles and motor vehicle equipment and does not supersede any requirements contained in the statutes and regulations administered by The National Highway Traffic Safety Administration. Please refer to the statutes and regulations cited herein for a more detailed description of such requirements.

Chapter 1. Background

A. Federal Statutes and Regulations

The National Highway Traffic Safety Administration (NHTSA) is the U.S. government agency responsible for implementing and enforcing the National Traffic and Motor Vehicle Safety Act of 1966, as amended, 49 U.S.C. Chapter 301 (the Vehicle Safety Act), and certain other laws relating to motor vehicle safety. Under that authority, NHTSA issues and enforces Federal motor vehicle safety standards (FMVSS) that apply to motor vehicles and to certain items of motor vehicle equipment. Implementing regulations are found in Title 49 of the Code of Federal Regulations (CFR), Parts 500-599.¹ Most CFR citations in this document are to specific sections of the regulations. For example, FMVSS No. 101 *Controls and Displays* can be found at 49 CFR 571.101.

B. How and Why Were the Federal Motor Vehicle Safety Standards Developed?

The Vehicle Safety Act was enacted to reduce traffic crashes and deaths and injuries resulting from traffic crashes. Under that authority, NHTSA issues and enforces FMVSS that apply to motor vehicles and certain items of motor vehicle equipment. The Vehicle Safety Act requires that each FMVSS be practicable, meet the need for motor vehicle safety, and be stated in objective terms.² On February 3, 1967, NHTSA published a final rule establishing the first FMVSS.³

C. Motor Vehicle and Motor Vehicle Equipment Certification

The Vehicle Safety Act requires that motor vehicles and regulated items of motor vehicle equipment manufactured for sale in the United States be certified to comply with all applicable FMVSS.⁴ Type approval is not required for motor vehicles and motor vehicle equipment sold in the United States. NHTSA does not issue type approval certifications and does not certify any motor vehicles or motor vehicle equipment as complying with applicable FMVSS. Instead, in accordance with 49 U.S.C. 30115, a “self-certification” process is in place, which requires the manufacturer to certify the vehicle or equipment item as complying with the applicable FMVSS. The

¹ The CFR may be browsed or searched at the link: http://www.ecfr.gov/cgi-bin/text-idx?SID=7ee7463862a174a64ff75bfc97cd844a&tpl=/ecfrbrowse/Title49/49tab_02.tpl

² See 49 U.S.C. 30111

³ See 32 FR 2408

⁴ See 49 U.S.C. 30115.

Vehicle Safety Act requires the exercise of “reasonable care” in issuing a certification of compliance with safety standards.⁵

D. Penalties for Violations of the Vehicle Safety Act and Implementing Regulations

Manufacturers may be subject to substantial civil penalties for failure to meet the requirements of the statutes and regulations that NHTSA administers.⁶ Currently, those penalties can be as high as \$7,000 for each violation with a maximum civil penalty of \$17,350,000 for a related series of violations.⁷ For example, the failure of a manufacturer to furnish notification of a noncompliance or defect to owners or to NHTSA may subject the fabricating manufacturer to substantial civil penalties.

Chapter 2. What does NHTSA Regulate?

A. Motor Vehicles

Motor vehicles are defined by statute as vehicles that are driven or drawn by mechanical power and manufactured primarily for use on public streets, roads, or highways.⁸ In regulating the manufacture of motor vehicles, NHTSA has established the type classifications identified and defined in Table 1.⁹

Table 1 – Motor Vehicle Type Classifications

Classification	Definition
Passenger car	A motor vehicle with motive power, except a low-speed vehicle, multipurpose passenger vehicle, motorcycle, or trailer, designed for carrying 10 persons or less.
Multipurpose passenger vehicle	A motor vehicle with motive power, except a low-speed vehicle or trailer, designed to carry 10 persons or less which is constructed either on a truck chassis or with special features for occasional off-road operation.
Truck	A motor vehicle with motive power, except a trailer, designed primarily for the transportation of property or special purpose equipment.
Bus	A motor vehicle with motive power, except a trailer, designed for carrying more than 10 persons.
Motorcycle	A motor vehicle with motive power having a seat or saddle for the use of the rider and designed to travel on not more than three wheels in contact with the ground.
Motor driven cycle	A motorcycle with a motor that produces 5 brake horsepower or less.
Trailer	A motor vehicle with or without motive power, designed for carrying persons or property and for being drawn by another motor vehicle.
Low-speed vehicle	A motor vehicle, that is 4-wheeled, whose speed attainable in 1 mile (1.6 km) is more than 20 miles per hour (32 kilometers per hour) and not more than 25 miles per hour (40 kilometers per hour) on a paved level surface, and whose GVWR is less than 3,000 pounds (1,361 kilograms).

⁵ Ibid.

⁶ See 49 U.S.C. 30165

⁷ See 49 CFR Part 578

⁸ See 49 U.S.C. 30102

⁹ See 49 CFR § 571.3 Definitions

Pole Trailer	A motor vehicle without motive power designed to be drawn by another motor vehicle and attached to the towing vehicle by means of a reach or pole, or by being boomed or otherwise secured to the towing vehicle, for transporting long or irregularly shaped loads such as poles, pipes, or structural members capable generally of sustaining themselves as beams between the supporting connections.
--------------	---

All motor vehicles must be classified in the manner set forth in Table 1. For example, school buses are classified as buses, motor driven cycles are classified as motorcycles, and motor homes are classified as multipurpose passenger vehicles. Vehicles such as race cars, dirt bikes, or all-terrain vehicles that are not primarily manufactured for on-road use do not qualify as motor vehicles and are therefore not regulated by NHTSA. Instead, such vehicles may be regulated by the Consumer Product Safety Commission (CPSC).¹⁰

B. Motor Vehicle Equipment

The Vehicle Safety Act defines motor vehicle equipment as:

- Any system, part, or component of a motor vehicle as originally manufactured;
- Any similar part or component manufactured or sold for replacement or improvement of a system, part, or component, or as an accessory or addition to a motor vehicle; or
- Any device or an article of apparel (except medicine or eyeglasses prescribed by a licensed practitioner) that is not a system, part, or component of a motor vehicle and is manufactured, sold, delivered, offered, or intended to be used only to safeguard motor vehicles and highway users against risk of accident, injury, or death.¹¹

The Vehicle Safety Act requires that regulated items of motor vehicle equipment manufactured for sale in the United States be certified to comply with all applicable FMVSS.¹² Motor vehicle equipment items that are not subject to the FMVSS do not require certification; however, such items may be found (by either NHTSA or the manufacturer) to have a safety-related defect, and if so, the manufacturer will have an obligation to furnish owners of the equipment with notification of, and a remedy for, the defect, usually at no charge to the consumer. Motor vehicle equipment items that are subject to the FMVSS are identified in Table 2.

Table 2 – Motor Vehicle Equipment Items Subject to the FMVSS

Motor Vehicle Equipment Description	See FMVSS Number(s)
Tires	109/110/117/119/120/129/139
Rims	110/120
Brake Hoses	106
Brake Fluid	116
Seat Belt Assemblies	209
Lamps, Reflective Devices, and Associated Equipment	108
Glazing (Automotive Glass and Plastics)	205
Motorcycle Helmets	218

¹⁰ See www.cpsc.gov

¹¹ See 49 U.S.C. 30102(a)(7)

¹² See 49 U.S.C. 30115

Child Restraint Systems (Child Safety Seats)	213
Platform Lift Systems For The Mobility Impaired	404
Rear Impact Guards For Trailers	223
Triangular Reflective Warning Devices	125
Compressed Natural Gas Containers	304

Chapter 3. Procedural Requirements for Fabricating Manufacturers

A. Introduction

Before offering a motor vehicle or motor vehicle equipment item for sale in the United States, the fabricating manufacturer must: 1) designate a permanent resident of the United States as its agent for service of process if the fabricating manufacturer is not located in the United States (49 CFR Part 551, Subpart D *Service of Process on Foreign Manufacturers and Importers*) and 2) submit to NHTSA identifying information on itself and on the products it manufactures to the FMVSS, not later than 30 days after the manufacturing process begins (49 CFR Part 566 *Manufacturer Identification*).¹³

B. Part 551 - Designate a Permanent Resident of the United States as its Agent for Service of Process

All foreign manufacturers, assemblers, and importers of motor vehicles or motor vehicle equipment must comply with this regulation before offering a motor vehicle or item of motor vehicle equipment for importation into the United States. The purpose of this regulation is to ensure that NHTSA is able to serve the manufacturer's agent with administrative or judicial notice or process. A detailed explanation of this regulation may be found in 49 CFR Part 551, Subpart D.

To expedite NHTSA's processing of submissions received under Part 551, Subpart D, foreign manufacturers may submit designation information online at: <http://www.nhtsa.dot.gov/cars/rules/manufacture/agent/customer.html>. After a manufacturer submits designation information online, NHTSA's database will create and immediately email back an Adobe PDF of a designation form that the manufacturer must print, sign and mail to NHTSA's at the address shown on the form. To comply with Part 551, Subpart D, the manufacturer must mail to NHTSA an original printout of the Adobe PDF with original ink signatures by both the manufacturer and agent. Submitting your designation information online, without more, will not satisfy the requirements of Part 551, Subpart D.

See Appendix 1 for a Part 551 submission form.

C. Part 566 - Manufacturer Identification

Manufacturers of motor vehicles and of motor vehicle equipment to which a FMVSS applies (except tires), must submit to NHTSA identifying information and a description of the items they produce not later than 30 days after

¹³ NHTSA maintains on its web site a list of manufacturers that have made Part 566 submissions. See <http://www.nhtsa.gov/apps/manufacturer/index.htm>

manufacturing begins.¹⁴ Not later than 30 days after any relevant business information changes, manufacturers must notify NHTSA to ensure that their records remain current, accurate, and complete.¹⁵

An individual business such as a corporation or limited liability company may want to operate multiple businesses without creating a new legal entity for each business. In the United States, these names are generally registered with the Office of the Secretary of State for the State in which the company is domiciled. Business laws may be different from State to State and even more diverse from country to country; however, it is important for manufacturers to furnish NHTSA with all versions of its company's legal business name, including trade names, assumed names, fictitious business names, and brand or label names that are associated with the business. Unregistered manufacturers' names on vehicle certification labels, importation documents, or vehicle ownership documents may cause confusion or delays when processing vehicles at the ports or during titling and registration of the vehicles for on-road use. Several examples of business names are shown in Table 3.

Table 3 - Examples of Assumed / Fictitious Business Names

Acme Company, Inc.	Trading As or T/A	Smith Productions
Jones Manufacturing	Doing business as or DBA or d/b/a	Acme Company, Inc.
Smith and Sons	A Division of	Acme Company, Inc.
Jones Manufacturing	A Subsidiary of	Acme Company, Inc.
Brown Quality Motors, Ltd.	Operating as or o/a	BQM Associates
China ABC Group Co. Ltd.	Doing business as or DBA or d/b/a	Qinghai Wu Industries

See Appendix 2 for a sample Part 566 submission.

Part 566 information submitted by manufacturers is periodically updated (approximately twice a month) in NHTSA's searchable web site at: <http://www.nhtsa.gov/apps/manufacturer/index.htm>.

See Appendix 8 for instructions on how to search NHTSA's Manufacturers' Information database.

Chapter 4. Vehicle Identification Numbers

A. Vehicle Identification Number or VIN

Under regulations administered by NHTSA, a vehicle identification number or VIN is "a series of Arabic numbers and Roman letters that is assigned to a motor vehicle for identification purposes."¹⁶ Among other things, NHTSA's regulations at 49 CFR Part 565 require a motor vehicle manufacturer to assign to each motor vehicle manufactured for sale in the United States a 17-character VIN that uniquely identifies the vehicle. The VIN must be correctly formatted and include a check digit in Position 9 that is mathematically correct under a formula that is included in the regulation. VINS are required to have 17 characters that do not include the letters I, O, or Q. Beginning with the 1980 model year, the VINs of any two vehicles manufactured within a 60-year period must not be identical. All spaces provided for in the VIN must be occupied by a character specified in Part 565 and the type face used for each VIN must be in capitals and use sans serif characters. This means that the characters will not have fine lines or "serifs" finishing off the main strokes of the letters. The VIN of each vehicle must appear

¹⁴ See 49 CFR Part 566

¹⁵ NHTSA obtains tire manufacturer identification information when the agency assigns a plant code to the tire manufacturer. See 49 CFR 574.5

¹⁶ See 49 CFR 565.12(r)

clearly and indelibly upon either a part of the vehicle, other than the glazing, that is not designed to be removed except for repair or upon a separate plate or label that is permanently affixed to such a part.¹⁷

B. VIN Location on Vehicles

The VIN for passenger cars, multipurpose passenger vehicles, low-speed vehicles, and trucks of 10,000 lbs. or less gross vehicle weight rating (GVWR) must be located inside the passenger compartment and readable, without moving any part of the vehicle, through the vehicle glazing (windshield) from outside the vehicle adjacent to the left windshield pillar.¹⁸ This is commonly called the “public VIN.” NHTSA regulations require that a motorcycle’s VIN need only appear on the label certifying compliance with all applicable FMVSS that the manufacturer must affix to a permanent member of the motorcycle as close as practicable to the intersection of the steering post with the handle bars in such a location that it can be easily readable without moving any part of the vehicle except for the steering mechanism.¹⁹ The VIN for a trailer must appear on the label certifying the vehicle’s compliance with all applicable FMVSS that the manufacturer must affix to a location on the forward half of the trailer’s left side, such that it is easily readable from outside the trailer without moving any part of the vehicle.²⁰

C. VIN Content

On April 30, 2008, NHTSA issued amended VIN regulations.²¹ These amendments were necessary to make certain that the VIN system would remain viable for the next 30 years. All motor vehicles that are manufactured on or after April 30, 2009 are subject to the amended regulation.

Chart 1 identifies how a VIN is formatted, the general contents of a VIN, and specifications for the characters to be used in certain positions of the VIN.

Chart 1 - General VIN Format

1 st Section			2 nd Section					3 rd	4 th Section								
Identifies Manufacturer and Type of Vehicle			Identifies Vehicle Attributes (Now includes Vehicle Make)					Check Digit	MY	Plant	Number sequentially assigned in Positions 12-17 if a High-Vol. Manu. or in Positions 15-17 if a Low-Vol. Manu.						
1	2	3	4	5	6	7	8	9	10	11	12	13	14	15	16	17	
		“g” if low-vol. manu.									WMI if low-vol. manufacturer (<1,000 of a given type each year)						
						@@					###	###	###	###	###		
						if car, and MPV and truck ≤ 10,000 lbs.						if car, and MPV and truck ≤ 10,000 lbs.					
														###	###	###	###
<p>@@ means that VIN Characters are: A,B,C,D,E,F,G,H,J,K,L,M,N,P,R,S,T,U,V,W,X,Y, or Z ## means that VIN Characters are: 0,1,2,3,4,5,6,7,8, or 9</p>																	
<p>For vehicle <u>not</u> a car, and MPV and truck ≤ 10,000 lbs.</p>																	

¹⁷ See 49 CFR 565.13(e)

¹⁸ See 49 CFR 565.13(f)

¹⁹ See 49 CFR 567.4(e)

²⁰ See 49 CFR 567.4(d)

²¹ See 73 Federal Register 23367, Published April 30, 2008

The VIN is comprised of four sections. Each section is described in detail below.

First Section of the VIN

The first section of a VIN consists of three characters. These first three characters of a VIN uniquely identify a motor vehicle manufacturer using the “World Manufacturer Identifier” or WMI code, if the manufacturer produces 1,000 or more vehicles of a given type each year (i.e., a “high-volume” manufacturer²²). A “low-volume” manufacturer that produces fewer than 1,000 vehicles of a given type each year uses the numeral “9” as the third character and Positions 12, 13, and 14 of the VIN for the remainder of the WMI. The placement of the WMI within a 17-character VIN is identified in Chart 2.

Chart 2 - Placement of the World Manufacturer Identifier in the VIN

1 st Section			4 th Section								
Identifies Manufacturer and Type of Vehicle			MY	Plant	Identifies (among other things) the 2nd part of the WMI for low-volume manufacturers in Positions 12, 13, and 14						
1	2	3	4,5,6...	10	11	12	13	14	15	16	17
		“9” if low-vol. manu				WMI if low-vol. manufacturer (<1,000 of a given type each year)					

Obtaining a World Manufacturer Identifier

A manufacturer that intends to assemble motor vehicles in the United States must obtain a WMI from the Society of Automotive Engineers (SAE). NHTSA has a contract with that organization to assign WMIs to manufacturers that assemble motor vehicles in the United States. Manufacturers must contact the SAE directly (and not NHTSA) to request the assignment of a WMI. They may do so by telephoning 724-772-8511 or by writing to: Society of Automotive Engineers, 400 Commonwealth Avenue, Warrendale, PA 15096, Attention: WMI Coordinator.

Second Section of the VIN

The second section of the VIN, known as the “Vehicle Descriptor Section,” consists of Positions 4 through 8. This second is used to identify “vehicle attributes” for each vehicle type as identified by 49 CFR 565.15, Table I, entitled “*Type of Vehicle and Information Decipherable*.” There are two special rules for passenger cars, and for multi-purpose passenger vehicles (MPVs) and trucks with a gross vehicle weight rating (GVWR) of 10,000 lbs. or less. First, manufacturers of such vehicles must report all restraint devices and their locations in the vehicles. Second, Position 7 of the VIN of such a vehicle must be alphabetic. Therefore, for passenger cars, and MPVs and trucks with a GVWR of 10,000 lbs. or less, if Position 7 of the VIN is alphabetic, the model year identified in Position 10 of the VIN refers to a year in the range of 2010-2039. Position 7 of VINs assigned to other vehicle types (e.g., motorcycles, buses, trailers) may be either alphabetic or numeric.

²² See 49 CFR 565.12(e)

Part 565 requires that manufacturers identify in the second section of the VIN, the vehicle attributes for each vehicle type as summarized in Chart 3.

Chart 3 - Vehicle Attributes for Each Vehicle Type that must be Identified in VIN Positions 4 through 8

Vehicle Type	Make	Line or Model	Series	Body Type	Engine Type	GVWR@	All Restraint Devices & Location	Chassis	Cab Type	Brake System	Type of Trailer	Length	Axle Configuration	Type of Motorcycle	Net Brake HP @@
Passenger Car	Yes	Yes	Yes	Yes	Yes		Yes								
MPV	Yes	Yes	Yes	Yes	Yes	Yes	Yes (If ≤ 10k)								
Truck	Yes	Yes	Yes		Yes	Yes	Yes (If ≤ 10k)	Yes	Yes	Yes					
Bus	Yes	Yes	Yes	Yes	Yes					Yes					
Trailer (incl. trailer kits and incomplete trailers)	Yes			Yes							Yes	Yes	Yes		
Motorcycle	Yes	Yes			Yes									Yes	Yes
Incomplete Vehicle (other than a trailer)	Yes	Yes	Yes		Yes				Yes	Yes					
LSV	Yes			Yes	Yes	Yes	Yes (type only)			Yes					
<p>Footnotes to Chart 3:</p> <p>@The GVWR designations in "Table II - Gross Vehicle Weight Rating Classes" must be used. The use of these designations within the VIN itself is not required.</p> <p>@@Engine net brake hp when encoded in the VIN cannot differ by more than 10% from the actual net brake horsepower. In the case of motorcycle with an actual net brake horsepower of 2 or less, the net brake horsepower must be not more than 2, and must be greater than 2 in the case of a motorcycle with an actual brake hp greater than 2. (The purpose of this exception is to preserve the distinction in the VIN between motorcycles and motor driven cycles.)</p>															

The terms used in Chart 3 are defined in 49 CFR 565.12. These definitions, and examples of the vehicle characteristics they cover, are identified in Chart 4.

Chart 4 – Definitions and Examples of Vehicle Attributes

Term	Definition	Examples
Type	means a class of vehicle distinguished by common traits including design and purpose	Passenger cars, Multipurpose Passenger Vehicles (MPVs), Trucks, Buses, Trailers, Incomplete Vehicles, Low Speed Vehicles (LSVs), and Motorcycles are separate types
Make	means a name that a manufacturer applies to a group of vehicles or engines	Chevrolet, Buick, Pontiac, Cadillac
Model	means the name that a manufacturer applies to a family of vehicles of the same type, make, line, series, and body type	Monte Carlo, Malibu, Lucerne, CTS
Line	means a name that a manufacturer applies to a family of vehicles within a make that have a degree of commonality in construction, such as body, chassis, or cab type	Super Sport, LT Classic, GXP, CX, CXL
Series	means a name that a manufacturer applies to a subdivision of a “line” denoting price, size or weight identification, and that is used by the manufacturer for marketing purposes	3500, 4500, 5500, 6500 Series
Body Type	means the general configuration or shape of a vehicle distinguished by such characteristics as the number of doors or windows, cargo carrying features and the roofline	4-door Sedan, 2-door, 2-door Fastback, 3-door Hatchback, 2-door Convertible, 5-door Liftback, 4-door Station Wagon
Engine Type	means a power source with defined characteristics. The specific manufacturer and make shall be represented if the engine powers a passenger car, and a MPV or truck with a GVWR ≤ 10,000 lbs.	Fuel utilized, number of cylinders, displacement, and net brake horsepower.

Trucks and other vehicle types have as many as nine reportable vehicle attributes and only five VIN positions in which to report these. This causes NHTSA to be frequently asked: “How do I fit all this information into the second section of the VIN?”

Part 565 gives manufacturers the flexibility to determine how they wish to structure or “encode” the contents of this section. One way a manufacturer may encode the information is to employ a “lookup table.” For example, the manufacturer’s five VIN characters “ABCDE” may be decoded using a lookup table to identify more than five vehicle attributes. It is important to remember that the manufacturer’s coding must be decipherable to NHTSA so that the agency may carry out its safety mission. The following examples for a passenger car may help clarify this.

Passenger Car Manufacturer's Sample VIN for the Second Section of the VIN (Positions 4-8)

Position	1	2	3	4	5	6	7	8	9	10	11	12	13	14	15	16	17
Example				R	P	1	A	3									

Note: Please remember VINs cannot contain the characters I, O or Q and that Position 7 must be alphabetic for passenger cars, and MPVs and trucks with a GVWR of 10,000 lbs. or less manufactured on or after April 30, 2009.

Sample Passenger Car Manufacturer's Lookup Table for the Second Section of the VIN (Positions 4-8)

Passenger Car Vehicle Attributes That Must Be Identified							
VIN 4-8 Code	Make	Line or Model	Series	Body Type	Engine Type	GVWR Class @	Restraint System @@
RP1A3	USA Car Co.	Super	LV	3 Dr. Coupe	2.4L 4 cyl. 180hp gas	A	A
RP1B3	USA Car Co.	Super	DV	4 Dr. Sedan	2.4L 4 cyl. 180hp Gas	B	B

Manufacturer's Notes to Lookup Table:
 @GVWR Class is from 49 CFR 565.15 "Table II - Gross Vehicle Weight Rating Classes"
 A= Not greater than 1360 kg. (3,000 lbs.)
 B=Greater than 1360 kg. to 1814 kg. (3,001-4,000 lbs.)
 @@Restraint System
 A= Front: Seat Belt, Air Bag, Side Air Bag, and Side Curtain Air Bag (Driver and Passenger) and
 Rear: Seat Belt and Side Curtain Air Bag.

Motorcycle VINs

Part 565 requires only five vehicle attributes of a motorcycle to be reported in the second section of a VIN. Because there are five positions available in the second section, a manufacturer may use each position for one of the five attributes. A motorcycle example will show how the second section of the VIN may be encoded.

Motorcycle Manufacturer's Sample VIN for the Second Section of the VIN (Positions 4-8)

Position	1	2	3	4	5	6	7	8	9	10	11	12	13	14	15	16	17
Example				U	2	A	D	G									

Sample Motorcycle Manufacturer's Lookup Table for the Second Section of the VIN (Positions 4-8)

VIN Position	Vehicle Attribute	Coding
4	Make	U=USA Motorcycle Co.
5	Line or Model	2=Winner
6	Type of Motorcycle	A= Scooter B=Sport Bike C=Cruiser
7	Engine Type	D=V-2, 200cc, gas E= V-4, 400cc, gas F=V-8, 1000cc, gas
8	Net Brake HP	G=V-2 - 15hp H=V-4 - 36hp J=V-8 - 75hp

Trailer VINs

The vehicle attributes "length" and "axle configuration" are applicable only to trailers. Although the term "length" is not defined in Part 565, the agency has interpreted it to mean the length of a trailer as measured from one extremity to the other. For a trailer, this would include the equipment that is part of the vehicle and by which it is towed (i.e., the tongue or equivalent connector to the towing vehicle). Axle configuration means the number of axles, e.g., 1-axle, 2-axle, 3-axle, etc. A trailer example will show how VIN Positions 4 through 8 of the second section may be encoded.

Trailer Manufacturer's Sample VIN for the Second Section of the VIN (Positions 4-8)

Position	1	2	3	4	5	6	7	8	9	10	11	12	13	14	15	16	17
Example				U	1	M	6	1									

Sample Trailer Manufacturer's Lookup Table for the Second Section of the VIN (Positions 4-8)

VIN Position	Vehicle Attribute	Coding
4	Make	U=USA Trailer Co.
5	Type of Trailer	1=Ball Type Pull 2=Pintle Hitch 3=Gooseneck 4=Straight Semi 5=Fifth Wheel 6=Kingpin
6	Body Type	A=Snowmobile Trailer B=Boat Trailer C=Car Hauler Trailer D=Dump Trailer E=Enclosed Trailer F=Flatbed Trailer G=Curtain Side Trailer H=Hydraulic Dovetail J=Double Drop Trailer K=Camper Trailer L=Lowboy Trailer M=Motorcycle Trailer N=Livestock Trailer P=Pole Trailer R=Reel Trailer S=Stacker Trailer T=Tank Trailer U=Utility Trailer V=Straw Trailer W=Landscape Trailer X=Logging Trailer Y=Satellite Trailer Z=Converter Dolly
7	Length	6=6 feet long 9=9 feet long A=26 feet long
8	Axle configuration	1=Single Axle 2=2 Axles 3=3 Axles

Second Section VIN Character Restrictions

The amended VIN regulations no longer restrict Positions 4, 5, 6, or 8 to either alphabetic or numeric characters. This gives manufacturers more permutations for their vehicle attribute coding. However, as stated above, for passenger cars, and MPVs and trucks with a GVWR of 10,000 lbs. or less manufactured on or after April 30 2009, Position 7 of the VIN must be alphabetic, which designates that the model year in Position 10 of the VIN refers to a year in the range of 2010-2039.

Third Section of the VIN

The third section of the VIN consists of one character, called the “check digit”, which occupies Position 9 in the VIN. The check digit’s purpose is to provide a means for verifying the accuracy of any VIN transcription. NHTSA regulations establish a mathematical formula for calculating the check digit.

After all other characters in VIN have been determined by the manufacturer, the check digit is calculated by carrying out the mathematical computation specified in the regulation.²³ First, each character in the VIN is assigned a “numerical value” as shown in Table III of the regulation, entitled “Assigned Values”.

49 CFR 565.15(c)(1) Table III – Values Assigned to Characters of VIN

A	B	C	D	E	F	G	H	J	K	L	M	N	P	R	S	T	U	V	W	X	Y	Z
1	2	3	4	5	6	7	8	1	2	3	4	5	7	9	2	3	4	5	6	7	8	9

Each position of the VIN (except Position 9, the check digit) is assigned a “weight value” as shown in Table IV of the regulation, entitled “VIN Position and Weight Factor”.

49 CFR 565.15(c)(2) Table IV – Weight Factors Assigned to VIN Positions 1-8 and 10-17

Position	1	2	3	4	5	6	7	8	9	10	11	12	13	14	15	16	17
Weight	8	7	6	5	4	3	2	10	N/A	9	8	7	6	5	4	3	2

Next, each character’s numeric value is multiplied by the position’s weight value. After you compute several, the check digit mathematical calculations are not very difficult. Below is an example.

Position	1	2	3	4	5	6	7	8	9	10	11	12	13	14	15	16	17
Sample VIN	1	J	9	R	P	1	A	3		A	1	6	4	4	3	4	5
Assigned Value	1	1	9	9	7	1	1	3		1	1	6	4	4	3	4	5
VIN Position Weight	8	7	6	5	4	3	2	10	N/A	9	8	7	6	5	4	3	2
Multiply Value by Weight	8	7	54	45	28	3	2	30		9	8	42	24	20	12	12	10

= 314

²³ See 49 CFR 565.15, paragraphs (c) (1) through (4).

The results are now added together and the total “314” is then divided by 11.

$$8 + 7 + 54 + 45 + 28 + 3 + 2 + 30 + 9 + 8 + 42 + 24 + 20 + 12 + 12 + 10 = 314$$

$$\begin{array}{r} 28 \\ 11 \overline{)314} \\ \underline{22} \\ 94 \\ \underline{88} \\ 6 \end{array} \quad \text{equals } 28 \frac{6}{11}$$



The total 314 is then divided by 11 = 28 6/11 or 28.545454

The check digit is based on either the Fractional Remainder or the Decimal Equivalent Remainder as reflected in Table V of the regulation, entitled “*Ninth Position Check Digit Values*”.

49 CFR 565.15(c)(4) Table V – 9th Position Check Digit Values

Fractional Remainder	0	1/11	2/11	3/11	4/11	5/11	6/11	7/11	8/11	9/11	10/11
Decimal Equivalent Remainder	0	.091	.182	.273	.364	.455	.545	.634	.727	.818	.909
Check Digit	0	1	2	3	4	5	6	7	8	9	X

All decimal equivalent remainders in Table V are rounded to the nearest thousandth (i.e., the 3rd digit to the right of the decimal point). If the 4th digit to the right of the decimal point is 5 or greater, round up; if 4 or less, round down.

In our total, 28.5454, the 4th digit to the right of the decimal point is 4, so round to 28.545. Table V shows that our decimal equivalent remainder “.545” equates to the check digit “6”.

A check digit, which can be zero through nine (0–9) or the letter “X”, appears in Position 9 of the VIN. Our computed check digit “6” will appear in Position 9 of our completed VIN: 1J9RP1A36A1644345. While the mathematical computations can be completed by hand, the agency recommends that new manufacturers develop a simple spreadsheet program to assist with calculating check digits and thereby reduce VIN errors. See Appendix 3 for a sample spreadsheet format to calculate VIN check digits.

Fourth Section

The fourth section of the VIN consists of Positions 10 through 17. Position 10 is reserved to encode the model year of the vehicle.

Fourth Section of the VIN - Model Year Placement

4 th Section							
MY	Plant	Number sequentially assigned in Positions 12-17 if a High-Vol. Manu. or in Positions 15-17 if a Low-Vol. Manu.					
10	11	12	13	14	15	16	17
		WMI if low-vol. manufacturer (<1,000 of a given type each year)					
		##	##	##	##	##	
		if car, and MPV and truck ≤ 10,000 lbs.					
		###	###	###	###		
		For vehicle <u>not</u> a car, and MPV and truck ≤ 10,000 lbs. GVWR					

Note: ## means that the VIN Characters are: 0,1,2,3,4,5,6,7,8, or 9

Besides the three letters that are not allowed in the VIN itself (I, O, and Q), the letters U and Z and the number 0 are not used for the year code. The model year is the year that a manufacturer uses to designate a discrete vehicle model, irrespective of the calendar year in which the vehicle was actually produced, provided that the production period does not exceed 24 months.²⁴ The year codes that must be used in the manufacturer's VIN are found in Table VII of the regulation, entitled "Year Codes for VIN".

49 CFR 565.15(d)(1) - Table VII – Required Year Codes for VIN

Year	2010	2011	2012	2013	2014	2015	2016	2017	2018	2019	2020	2021	2022	2023	2024	2025	2026	2027	2028
Code	A	B	C	D	E	F	G	H	J	K	L	M	N	P	R	S	T	V	W

Position 11 of a VIN is used to encode the vehicle's plant of manufacture. This term is defined by the regulation as "the plant where the manufacturer affixes the VIN."²⁵ Manufacturers may assign their own plant codes, but should report to NHTSA, in their VIN deciphering information, the city, state, and country in which the plant of manufacture is located (e.g., Lansing, Michigan, USA). An example will show how VIN Positions 10 and 11 of the fourth section may be encoded.

²⁴ See 49 CFR 565.12(m)

²⁵ See 49 CFR 565.12(n)

Manufacturer's Sample VIN for the Fourth Section of the VIN (Positions 10-11)

Position	1	2	3	4	5	6	7	8	9	10	11	12	13	14	15	16	17
Example										A	B						



Manufacturer's Lookup Table for the Fourth Section of the VIN (Positions 10 and 11)

VIN Position	Vehicle Attribute	Coding
10	Model Year	A=2010 B=2011 C=2012 (From Table VII of 49 CFR 565.15(d)(1))
11	Plant of Manufacture	B=Baltimore, MD USA F=Flint, MI USA L=Lansing, MI USA M=Lordstown, OH USA K=Bowling Green, KY USA R=Ramos Arizpe, Mexico

Positions 12 through 17 of the VIN represent the number sequentially assigned by the manufacturer in the production process if the manufacturer is a high-volume manufacturer. If the manufacturer is a low-volume manufacturer, Positions 12, 13, and 14 combined with Positions 1, 2, and 3 of the VIN uniquely identify the manufacturer. Please note that Positions 13 through 17 must be numeric, if the VINs are for passenger cars, and MPVs and trucks with a GVWR of 10,000 lbs. or less. For any other type of vehicle, Positions 14 through 17 must be numeric.

4 th Section							
MY	Plant	Number sequentially assigned in Positions 12-17 if a High-Vol. Manu. or in Positions 15-17 if a Low-Vol. Manu.					
10	11	12	13	14	15	16	17
		WMI if low-vol. manufacturer (<1,000 of a given type each year)					
		##	##	##	##	##	##
Note: ## means that the VIN Characters are: 0,1,2,3,4,5,6,7,8, or 9		if car, and MPV and truck ≤ 10,000 lbs.					
		###	###	###	###	###	###
		For vehicle <u>not</u> a car, and MPV and truck ≤ 10,000 lbs. GVWR					

D. Manufacturer's Requirement to Furnish NHTSA with VIN Deciphering Information

It is very important that each manufacturer report to NHTSA its complete VIN deciphering information so that the agency may simplify vehicle identification information retrieval and increase the accuracy and efficiency of the vehicle recall campaigns. The VIN has become the key identifier in data systems that track compliance with Federal and state safety programs and that manage and analyze information on vehicle manufacturing processes, registrations, insurance programs, crash investigations, and safety research. Organizations that use VINs in data systems include NHTSA, manufacturers, state motor vehicle departments, law enforcement agencies, insurance companies, and motor vehicle safety researchers.

Under 49 CFR 565.26, a motor vehicle manufacturer must submit to NHTSA, either directly or through an agent, information the agency will need to decipher the manufacturer's VIN characters not later than 60 days before the manufacturer offers for sale the first vehicle identified by that VIN or if information concerning vehicle characteristics sufficient to specify the VIN code is unavailable to the manufacturer by that date, then within one week after that information first becomes available. The purpose of the 60-day requirement is to permit users of the VIN, such as State motor vehicle agencies, to obtain the necessary deciphering information before vehicle purchasers begin registering their vehicles. The VIN deciphering information must be addressed to: Administrator, National Highway Traffic Safety Administration, 1200 New Jersey Avenue, SE., Washington, DC 20590, Attention: VIN Coordinator. See Appendix 4 for sample VIN deciphering letters.

Chapter 5. Certification to all Applicable FMVSS

A. Introduction

As noted above, the Vehicle Safety Act requires that regulated items of motor vehicle equipment and motor vehicles manufactured for sale in the United States be certified to comply with all applicable FMVSS. NHTSA's regulations on motor vehicle certification are found at 49 CFR Part 567, while the regulations on the certification of motor vehicle equipment subject to the FMVSS are found within the standards that pertain to each such item of equipment, as published in 49 CFR Part 571, Subpart B.

B. Motor Vehicle Equipment Certification and NHTSA Assigned Codes

Motor vehicle equipment that is subject to an FMVSS must, as originally manufactured, conform to the standard and be so certified. In most instances, certification of compliance with the applicable FMVSS for regulated items of motor vehicle equipment is evidenced by the symbol "DOT" either inscribed on the equipment in a prescribed location, or placed on the outside of the container in which the equipment is shipped.²⁶

Along with a marking that indicates certification of compliance with an applicable FMVSS, the fabricating manufacturer of certain regulated equipment items such as brake hoses, glazing (automotive glass and plastics), and tires must label its products with code marks or identification numbers assigned to the manufacturer by NHTSA.²⁷ NHTSA assigns an identification number to a manufacturer of tires or glazing (automotive glass and plastics) and accepts the designation of a brake hose manufacturer after the manufacturer submits an application to the National Highway Traffic Safety Administration, Equipment Division, W45-207, NVS-220, 1200 New Jersey Avenue SE, Washington, DC 20590. To avoid a delay in the issuance of NHTSA assigned code marks or identification numbers, it is wise to comply with the requirements to designate a U.S. resident as agent for service of process if the fabricating manufacturer is not located in the United States. This is accomplished by

²⁶ See 49 U.S.C. §§ 30112 and 30115

²⁷ See 49 CFR 571.106, paragraph S5.2.2(b), relating to brake hoses; 49 CFR 571.205, paragraph S6.2, relating to glazing; and 49 CFR 574.5, relating to tires.

submitting the appropriate form to the NHTSA Office of Chief Counsel. See Chapter 3, Paragraph B and Appendix 1 of this document for the Part 551 requirements and form.

Requirements for certification markings on equipment items are found in the individual standards that apply to those items, as published in 49 CFR Part 571. For example, FMVSS No. 205 requires a glazing manufacturer to certify its glazing by adding to the marks required by section 7 of ANSI/SAE Z26.1–1996,²⁸ in letters and numerals of the same size, the symbol “DOT” and a manufacturer's code mark that NHTSA assigned to the glazing manufacturer.

Please see Appendix 5 for sample code marks and identification application forms for glazing, tires, and brake hoses.

C. Motor Vehicle Certification

A motor vehicle must be manufactured to comply with all applicable FMVSS and bear a label certifying such compliance that is permanently affixed (riveted or affixed in such a manner that it cannot be removed without destroying or defacing it) by the vehicle's manufacturer (i.e., the actual assembler of the vehicle).²⁹ Certification labeling requirements are necessary to establish that the vehicle was manufactured to comply with all applicable FMVSS. Because the label also identifies the type classification of the vehicle, it also helps to identify which of the FMVSS, Bumper Standards (49 CFR Part 581), and Federal Theft Prevention Standards (49 CFR Part 541) apply to the vehicle.

D. Motor Vehicle Certification Labels

i. Placement of the Certification Label³⁰

For vehicles other than trailers and motorcycles, the manufacturer's certification label must be affixed to either the hinge pillar, door-latch post, or the door edge that meets the door-latch post, next to the driver's seating position, or if none of these locations is practicable, to the left side of the instrument panel. If that location is also not practicable, the label must be affixed to the inward-facing surface of the door next to the driver's seating position.³¹ The location of the label must be such that it is easily readable without moving any part of the vehicle except an outer door.

The manufacturer's certification label for trailers must be affixed to a location on the forward half of the left side, such that it is easily readable from outside the vehicle without moving any part of the vehicle. The certification label for motorcycles must be affixed to a permanent member of the vehicle as close as is practicable to the intersection of the steering post with the handle bars, in a location such that it is easily readable without moving any part of the vehicle except for the steering system. This label is the only location on a motorcycle that must show the VIN.

ii. Motor Vehicle Certification Label Content

The motor vehicle certification label, among other things, identifies the vehicle's manufacturer (i.e., the actual assembler of the vehicle), states the vehicle's date of manufacture (month and year), Gross Vehicle Weight Rating or GVWR, Gross Axle Weight Rating or GAWR of each axle, vehicle type classification (e.g., MPV, truck),

²⁸ See 49 CFR 571.205 S3.2, entitled “Incorporation by Reference” wherein it states: (a) “American National Standard for Safety Glazing Materials for Glazing Motor Vehicles and Motor Vehicle Equipment Operating on Land Highways-Safety Standard” ANSI/SAE Z26.1–1996, Approved by American National Standards Institute August 11, 1997 (ANSI/SAE Z26.1–1996) is incorporated by reference in Section 5.1 and is hereby made part of this Standard.

²⁹ See 49 U.S.C. §§ 30112 and 30115, and 49 CFR part 567

³⁰ See 49 CFR 567.4(c), (d), and (e)

³¹ If none of the preceding locations is practicable, notification of that fact, together with drawings or photographs showing a suggested alternate location in the same general area, shall be submitted for approval to the Administrator, National Highway Traffic Safety Administration, 1200 New Jersey Avenue SE, Washington, D.C. 20590.

and VIN. For multipurpose passenger vehicles and trucks with a GVWR of 6,000 pounds or less, the label must contain the statement: *“This vehicle conforms to all applicable Federal motor vehicle safety and theft prevention standards in effect on the date of manufacture shown above.”* For passenger cars, the label must contain the statement *“This vehicle conforms to all applicable Federal motor vehicle safety, bumper, and theft prevention standards in effect on the date of manufacture shown above.”* For all other vehicles, the label must contain the statement: *“This vehicle conforms to all applicable Federal motor vehicle safety standards in effect on the date of manufacture shown above.”*

iii. Certification Requirements for Vehicles Manufactured in Two or More Stages

A “completed” vehicle is one that requires no further manufacturing operations to perform its intended function. An “incomplete” vehicle is an assemblage consisting, at a minimum, of chassis (including the frame) structure, power train, steering system, suspension system, and braking system, in the state that those systems are to be part of the completed vehicle, but requires further manufacturing operations to become a completed vehicle. An incomplete trailer is also an incomplete vehicle.³² Manufacturers of incomplete vehicles must furnish at or before the time of delivery an incomplete vehicle document or “IVD” that contains, among other things, a list of each FMVSS applicable to the incomplete vehicle’s type classification and a statement whether the vehicle will or will not conform to each applicable FMVSS, or that FMVSS conformance cannot be determined.³³

Additionally, incomplete vehicle manufacturers must generally affix to their vehicles a label that identifies the incomplete manufacturer, the vehicle’s date of manufacture (month and year), its GVWR, GAWR, and VIN.

A final-stage manufacturer is a person who performs such manufacturing operations on an incomplete vehicle that it becomes a completed vehicle. An intermediate manufacturer is a person, other than the incomplete vehicle manufacturer or the final-stage manufacturer, who performs manufacturing operations on a vehicle manufactured in two or more stages.³⁴ Both the final-stage and intermediate manufacturers assume legal responsibility for all certification-related duties and liabilities under the Vehicle Safety Act with respect to components and systems they install or supply for installation on the incomplete vehicle, unless changed by a subsequent manufacturer. Both have responsibility to further manufacture or complete the vehicle in accordance with the IVD furnished by the incomplete vehicle manufacturer.

The intermediate manufacturer must affix a label that identifies that manufacturer, states the vehicle’s GVWR, GAWR, and VIN, and identifies the month and year in which the intermediate manufacturer performed its last manufacturing operation on the incomplete vehicle.

The final-stage manufacturer must affix a label that identifies that manufacturer, states the vehicle’s GVWR, GAWR, vehicle type classification, and VIN, and identifies the vehicle’s date of manufacture (month and year). The date selected must be the date of manufacture of the incomplete vehicle, the date of final completion, or a date between those two dates. The label must also contain one of the following three alternative certification statements:³⁵

1. *“This vehicle conforms to all applicable Federal Motor Vehicle Safety Standards, [and Bumper and Theft Prevention Standards, if applicable] in effect in (month, year).”*
2. *“This vehicle has been completed in accordance with the prior manufacturers’ IVD, where applicable. This vehicle conforms to all applicable Federal Motor Vehicle Safety Standards, [and Bumper and Theft Prevention Standards, if applicable] in effect in (month, year).”*

³² See 49 CFR 567.3

³³ See 49 CFR 568.4(a) and (b)

³⁴ See 49 CFR 567.3

³⁵ See 49 CFR 567.5(d)

3. “This vehicle has been completed in accordance with the prior manufacturers’ IVD, where applicable, except for [insert FMVSS]. This vehicle conforms to all applicable Federal Motor Vehicle Safety Standards, [and Bumper and Theft Prevention Standards if applicable] in effect in (month, year).”

Certification label content requirements for each manufacturer are summarized in Table 4.

Table 4 - Certification Label Content Requirements by Manufacturer Type

Manufacturer Type	Company’s Name	Date of Manufact-ure	GVWR	GAWR	Vehicle Type	VIN	Certification Statement Source
Completed Vehicle	Yes	Yes	Yes	Yes	Yes	Yes	Yes, 1 of 3 567.4(g)
Incomplete Vehicle	Yes	Yes	Yes	Yes	No	Yes	No, IVD 567.5(b)(2)
Intermediate	Yes	Yes	Yes	Yes	No	Yes	No 567.5(c)(2)
Final-stage	Yes	Yes	Yes	Yes	Yes	Yes	Yes, 1 of 3 567.5(d)(2)

Sample manufacturers’ certification labels covering a motorcycle, trailer, low-speed vehicle, multipurpose passenger vehicle, truck, and passenger car are provided in Appendix 6.

iv. Certification Label Suppliers

NHTSA does not endorse any certification label suppliers or their products; however, companies known to the agency that supply such products to motor vehicle manufacturers are identified in Appendix 7.

Chapter 6. The Federal Motor Vehicle Safety Standards

A. FMVSS Issuance

NHTSA is authorized by the Vehicle Safety Act to issue safety standards that set minimum performance requirements for new motor vehicles and for certain items of motor vehicle equipment. Such standards must be practicable, meet the need for motor vehicle safety, and be stated in objective terms. The FMVSS specify the minimum performance requirements and, in general terms, the objective tests required to demonstrate product compliance.

B. FMVSS Organization under 49 CFR Part 571

The FMVSS are generally organized under Vehicle Crash Avoidance (Series 100), Crashworthiness (Series 200)³⁶, Post-Crash Protection (Series 300), Miscellaneous (Series 400), Low-Speed Vehicles (Series 500), or Equipment standards. All FMVSS are found in 49 CFR Part 571, Subpart B, and are numbered to correspond to the FMVSS number. For example FMVSS No. 101 *Controls and Displays* is found in 49 CFR 571.101.

Because manufacturers are responsible for “self-certifying” that their products meet all applicable FMVSS before those products can be offered for sale, it is important for a manufacturer to be knowledgeable about the performance requirements of each FMVSS applicable to its products. NHTSA encourages manufacturers to

³⁶ Crashworthiness means the protection a passenger motor vehicle gives its passengers against personal injury or death from a motor vehicle crash.

conduct tests as specified in certain of the FMVSS. Manufacturers should also be familiar with the laboratory test procedures that NHTSA uses to evaluate the compliance of their products with each FMVSS. These may be found on the NHTSA web site.³⁷

C. FMVSS Applicability

A paragraph within each FMVSS identifies the types of vehicles or equipment items to which the standard applies. For example, Paragraph S3 of 49 CFR 571.101 states that FMVSS No. 101 *Controls and Displays* applies to passenger cars, multipurpose passenger vehicles, trucks, and buses. Certain FMVSS requirements apply only to vehicles above or below a specified GVWR. For example, FMVSS No. 201 *Occupant Protection in Interior Impact* applies to passenger cars, multipurpose passenger vehicles, trucks, and buses with a GVWR of 10,000 pounds (4,536 kilograms) or less.³⁸ Other FMVSS requirements may not apply to certain specialty vehicles. For example, FMVSS No. 225 *Child Restraint Anchorage Systems* does not apply to walk-in van-type vehicles, vehicles manufactured to be sold exclusively to the U.S. Postal Service, shuttle buses, and funeral coaches.³⁹

D. Reference Table Identifying FMVSS Applicability by Vehicle Type and Equipment Items

To assist manufacturers, NHTSA has created a ready reference table to show FMVSS applicability by motor vehicle type classification and motor vehicle equipment item. See Appendix 9. As FMVSS are adopted or amended, they are assigned effective dates. It is therefore wise to check the most up-to-date version of 49 CFR Part 571, Subpart B for regulatory amendments.

³⁷ See <http://www.nhtsa.gov/Vehicle+Safety/Test+Procedures>

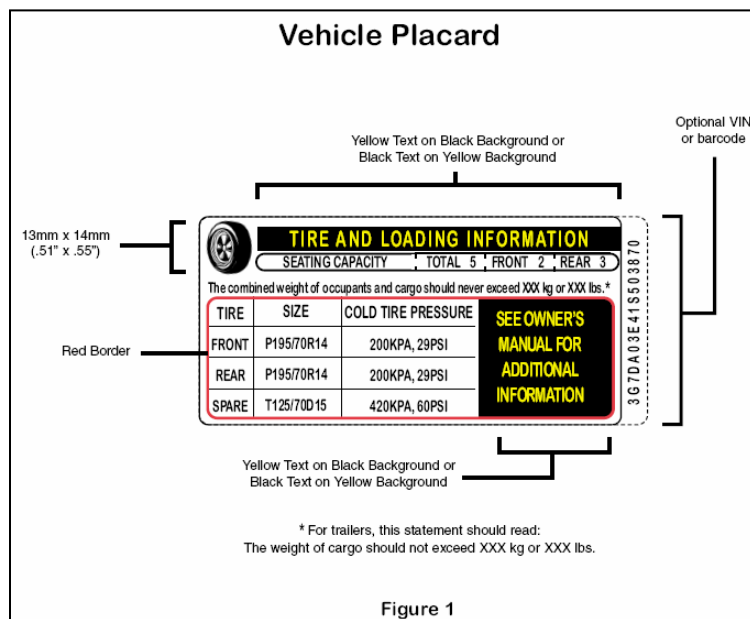
³⁸ See 49 CFR 571.201 paragraph S2

³⁹ See 49 CFR 571.225 paragraph S2

Chapter 7. Tire Information Labeling Requirements

FMVSS No. 110 specifies, among other things, requirements for tire selection to prevent tire overloading. The standard applies to vehicles with a GVWR of 10,000 pounds (4,536 kilograms) or less, except for motorcycles, low-speed vehicles, and incomplete vehicles.⁴⁰ Manufacturers are required to permanently affix a tire placard in a specified location on the vehicle. The placard provides consumers with tire and loading information, including the vehicle's seating capacity and weight. An example of the required placard is shown in Figure 1.

Figure 1 – Tire Placard



Chapter 8. Duty to Notify NHTSA of a Noncompliance with an FMVSS or a Safety-Related Defect

Notwithstanding its certification of a product, a manufacturer may subsequently determine that a noncompliance with an FMVSS or a safety-related defect exists in a motor vehicle or a motor vehicle equipment item it has produced. Manufacturers have a duty to notify NHTSA if they learn the vehicle or equipment contains a defect and in good faith they decide that the defect is related to motor vehicle safety, or in good faith they decide that the vehicle or equipment does not comply with an applicable FMVSS.⁴¹ The manufacturer must notify NHTSA within five working days after determining the existence of a noncompliance or a safety-related defect.⁴² Alternately, NHTSA may determine the existence of a noncompliance or a safety-related defect in a particular motor vehicle or motor vehicle equipment item and order the responsible manufacturer to recall the product.⁴³

⁴⁰ See 49 CFR 571.110 paragraph S4.3

⁴¹ See 49 U.S.C. 30118(c)

⁴² See 49 CFR 573.6

⁴³ See 49 U.S.C. 30118(b)

Chapter 9. Duty to Notify Owners and Dealers and Provide a Remedy for a Noncompliance or a Safety-Related Defect

Regardless of whether the noncompliance with an FMVSS or a safety-related defect is determined to exist by the manufacturer or by NHTSA, the manufacturer must provide owners and dealers of the affected products with notification of the noncompliance or defect and must remedy the noncompliance or defect, usually without charge.⁴⁴ The notification and remedy process is commonly referred to as a “safety recall campaign” or more simply as a “recall.” NHTSA monitors the remedy program to ensure its successful completion. The agency is not authorized to expend its funds on recalls; the expense of notifying owners and providing a remedy must be borne by the fabricating manufacturer and/or importer of the products found to contain the noncompliance or defect.⁴⁵ Manufacturers are encouraged to contact NHTSA at 202-366-5210 or review the agency’s web site for more comprehensive information. See <http://www-odi.nhtsa.dot.gov/>.

Chapter 10. Record Keeping for Manufacturers

A. Tires

A new tire manufacturer is required by NHTSA regulations to permanently mold into each tire intended for use on a motor vehicle a “tire identification number” or “TIN.”⁴⁶ Tire distributors and dealers that are owned or controlled by tire manufacturers are required to send to the tire manufacturers, records of any new tires they sell, including the TINs of the tires and the name and address of the tire purchasers. Independent tire distributors or dealers are required to furnish tire registration forms that identify the TIN and the tire distributor or dealer’s name and address to the purchasers of new tires, who may then mail the forms to the tire manufacturer. See Appendix 10 for a sample tire registration form. Instead of furnishing the tire purchaser with a registration form, independent tire distributors or dealers may electronically transmit tire purchaser and tire registration information to the tire manufacturer by secure means, as identified or authorized by the manufacturer.

Tire manufacturers must maintain information from the registration forms for a period of not less than 5 years from the date on which the information is recorded. Motor vehicle manufacturers are required to maintain records of the TINs for the tires installed on their vehicles and the name and address of the first purchasers of their vehicles for 5 years from the date that the vehicles are sold. These requirements are intended to ensure that purchasers receive proper notification in the event that a tire is recalled to remedy a noncompliance or safety-related defect.⁴⁷

B. Child Restraints

In like manner, the manufacturer of a child restraint system (i.e., a child safety seat), other than one installed on a vehicle as newly manufactured, must furnish a registration form to be completed by the owners of those seats and retain information from the form for a period of not less than 6 years to ensure that the owners receive proper notification of a recall campaign.⁴⁸

C. Motor Vehicles and Equipment

NHTSA regulations also require manufacturers of motor vehicles and motor vehicle equipment to retain claims, complaints, reports, and other records concerning alleged and proven defects and malfunctions that may be

⁴⁴ See 49 CFR Part 577

⁴⁵ See 49 U.S.C. §§ 30118 - 30120

⁴⁶ See 49 CFR Part 574.5

⁴⁷ See 49 CFR Part 574

⁴⁸ See 49 CFR Part 588

related to motor vehicle safety for a period of five calendar years from the date on which they were generated or acquired by the manufacturer.⁴⁹ Under this regulation, “malfunctions that may be related to motor vehicle safety” are defined as including any failure or malfunction beyond normal deterioration in use, or any failure of performance, or any flaw or unintended deviation from design specifications, that could in any reasonably foreseeable manner be a causative factor in, or aggravate, a crash or an injury to a person. This regulation also describes the records that manufacturers must maintain, including all documentary materials, films, tapes, and other information-storing media that contain information concerning malfunctions that may be related to motor vehicle safety. The section describes such records as including, but not being limited to, reports and other documents, including material generated or communicated by computer, telefax or other electronic means, that are related to work performed under warranties; and any lists, compilations, analyses, or discussions of such malfunctions contained in internal or external correspondence of the manufacturer, including communications transmitted electronically.

Chapter 11. Early Warning Reporting

Manufacturers must submit quarterly reports to NHTSA under the agency’s Early Warning Reporting (EWR) regulations that implement the Transportation Recall Enhancement, Accountability, and Documentation (TREAD) Act of 2000. These regulations require manufacturers to submit information that could assist the agency in determining whether a safety-related defect exists in a vehicle or equipment item used in the United States.⁵⁰ The regulations divide manufacturers of motor vehicles and motor vehicle equipment into two groups with different responsibilities for reporting information that could indicate the existence of potential safety-related defects.

The first group comprises motor vehicle manufacturers that meet certain production thresholds, tire manufacturers that produce more than a certain number of tires by tire line, and all manufacturers of child restraint systems. Manufacturers of light vehicles, motorcycles, trailers, and medium-heavy vehicles (except buses and emergency vehicles) that produced, imported, offered for sale, or sold 5,000 or more vehicles of a category annually in the United States are required to furnish NHTSA with comprehensive reports every calendar quarter. Emergency vehicle manufacturers must report if they produced, imported, offered for sale, or sold 500 or more vehicles annually, and bus manufacturers must report if they produced, imported or offered for sale, or sold 100 or more buses annually in the United States. Manufacturers of passenger car, light truck, and motorcycle tires are also required to provide comprehensive quarterly reports if they produced, imported, offered for sale, or sold 15,000 or more tires in a tire line. This group of manufacturers must generally report to NHTSA production-related information, incidents related to a death or injury, consumer complaints, warranty claims (warranty adjustments for tires), property damage claims, and field reports.

The second group comprises all other manufacturers of motor vehicles and motor vehicle equipment (i.e., vehicle manufacturers that produce, import, or sell annually in the United States fewer than 5,000 light vehicles, motorcycles, trailers, and medium-heavy vehicles (excluding emergency vehicles and buses); manufacturers that produce, import, or sell annually in the United States fewer than 500 emergency vehicles; manufacturers that produce, import, or sell annually in the United States fewer than 100 buses; manufacturers of original motor vehicle equipment; and manufacturers of replacement motor vehicle equipment other than child restraint systems and tires). These manufacturers must submit a report if they receive a claim or notice related to an incident involving a death, but are not required to report any other information under the EWR rule. Manufacturers are encouraged to contact NHTSA at 202-366-4238 or review the agency’s web site for more comprehensive EWR information. See <http://www-odi.nhtsa.dot.gov/ewr/ewr.cfm>.

Under other NHTSA regulations, all vehicle and equipment manufacturers in both groups must provide copies of all documents sent or made available to more than one dealer, distributor, owner, purchaser, lessor or lessee, in the United States concerning customer satisfaction campaigns, consumer advisories, recalls, or other activities

⁴⁹ See 49 CFR part 576

⁵⁰ See 49 CFR Part 579, Subpart C

involving the repair or replacement of vehicles or equipment.⁵¹ A manufacturer must also report safety recalls and other safety campaigns it conducts in a foreign country that cover a motor vehicle, an item of motor vehicle equipment, or a tire that is identical or substantially similar to such a product offered for sale or sold in the United States.⁵²

Chapter 12. Other Statutory/Regulatory Requirements

Manufacturers should be aware that NHTSA administers additional statutes and regulations related to motor vehicles and motor vehicle equipment. These include:

A. Theft Prevention

This statute and implementing regulations require motor vehicle manufacturers to affix or inscribe anti-theft identification markings to major parts and replacement parts for certain lines of passenger cars, light trucks and MPVs designated as high theft lines. See 49 U.S.C. Chapter 331 and 49 CFR Parts 541-543.

B. Bumper Standards

This statute and implementing regulations establish standards to reduce physical damage to the front and rear of passenger motor vehicles from low speed collisions. See 49 U.S.C. Chapter 325 and 49 CFR Part 581.

C. Fuel Economy

This statute and implementing regulations require manufacturers to comply with the applicable average fuel economy standards. See 49 U.S.C. Chapter 329 and 49 CFR Parts 525, 526, 529, 531, 533, 535, 537, and 538.

D. Domestic Content Labeling

This statute and implementing regulations establish requirements for the disclosure of information relating to the countries of origin of the equipment on new passenger motor vehicles. See 49 U.S.C. Chapter 323 and 49 CFR Part 583.

E. Consumer Information

This statute and implementing regulations establish requirements for the disclosure of information in the owner's manual of a motor vehicle relating to tires and the Uniform Tire Quality Grading program and the reporting of possible safety defects to NHTSA. Owner's manuals of special vehicles such as slide-in campers and trucks that are capable of accommodating slide-in campers must also contain certain consumer information.⁵³ For certain vehicles, manufacturers are required to affix a Rollover Warning label⁵⁴ and to label the vehicle with New Car Assessment Program Safety Rating information.⁵⁵ See 49 U.S.C. Chapter 323 and 49 CFR Part 575.

⁵¹ See 49 CFR 579.5 and 579.6

⁵² See 49 CFR Part 579, Subpart B

⁵³ See 49 CFR 575.103

⁵⁴ See 49 CFR 575.105

⁵⁵ See 49 CFR 575.301

Chapter 13. NHTSA Contacts

Table 5 provides NHTSA contact numbers and Internet resources to help answer questions about the information presented in the previous sections.

Table 5 – NHTSA Contacts

Office of Vehicle Safety Compliance		
Topic	NHTSA Office/Internet	Telephone No./Link
General questions about importing vehicles and equipment items	Import and Certification Division	(202) 366-5291
<i>General Importation Information</i>	http://www.nhtsa.gov/cars/rules/import	
Questions about how a manufacturer informs NHTSA about its company and the products it manufactures	Import and Certification Division	(202) 366-5291
Questions about how to provide NHTSA with the manufacturer's vehicle identification number deciphering information	Import and Certification Division	(202) 366-5291
Questions about NHTSA ID numbers that are assigned to equipment manufacturers of brake hoses, glazing (glass), and tires	Equipment Division	(202) 366-5317
<i>Information to Assist New Manufacturers</i>	http://www.nhtsa.gov/cars/rules/maninfo/	
Questions about FMVSS as they relate to equipment items (i.e., tires, rims, brake hoses, brake fluid, seat belt assemblies, lighting equipment, glazing (automotive glass and plastics), motorcycle helmets, child restraint systems (child safety seats), platform lift systems for the mobility impaired, rear impact guards for trailers, triangular reflective warning devices, and compressed natural gas containers)	Equipment Division	(202) 366-5317
<i>Federal motor vehicle safety standards (FMVSS)</i>	http://www.nhtsa.gov/cars/rules/	
<i>NHTSA's Manufacturer Databases</i>	www.nhtsa.gov/cars/rules/manufacture	
<i>Government Vehicle Safety Information</i>	http://www.safercar.gov/	

Office of Defects Investigation		
Topic	NHTSA Office/Internet	Telephone No./Link
Questions about Early Warning Reporting (EWR)	Early Warning Division	(202) 366-4238
<i>Early Warning Reporting</i>	http://www-odi.nhtsa.dot.gov/ewr/ewr.cfm	
Questions about Defects and Recalls	Office of Defects Investigation	(202) 366-5210
<i>Defects Investigations</i>	http://www-odi.nhtsa.dot.gov/	

Office of Chief Counsel		
Topic	NHTSA Office/Internet	Telephone No./Link
Requests for interpretation of the statutes and regulations administered by NHTSA	Office of Chief Counsel	Requests should be made in writing.
<i>NHTSA Chief Counsel interpretive letters</i>	http://isearch.nhtsa.gov/	
<i>NHTSA Statutory Authorities</i>	http://www.nhtsa.gov/Laws-Regs	
<i>NHTSA Regulations</i>	http://www.nhtsa.gov/cars/rules/	
Questions about how to designate a U.S. resident as an agent for service of process	Office of Chief Counsel	(202) 366-1834
<i>Suggested Designation of Agent for Service of Process 49 CFR Part 551, Subpart D</i>	http://www.nhtsa.gov/cars/rules/manufacture/agent/customer.html	

Chapter 14. Additional Resources

Other than those noted before, manufacturers may find helpful the resources identified in Table 6.

Table 6 – Additional Resources

Resource	Contact
Environmental Protection Agency	www.epa.gov
Motorcycle Industry Council	www.mic.org
National Association of Trailer Manufacturers	www.natm.com
Truck Trailer Manufacturers Association	www.ttmanet.org
Recreational Vehicle Industry Association	www.rvia.org
Tire and Rim Association, Inc.	www.us-tra.org
National Truck Equipment Association	www.ntea.com

Chapter 15. Helpful Hints

A. Manufacturer's Statements of Origin or Certificates of Origin

NHTSA is not responsible for titling or registering motor vehicles or for regulating the operation of motor vehicles on public roads in the United States. That is instead the responsibility of the individual States. Some States may require a manufacturer's certificate of origin (MCO) or manufacturer's statement of origin (MSO) to register a new motor vehicle. These are not federally required documents. NHTSA, therefore, is not in a position to offer guidance to prospective vehicle manufacturers or vehicle purchasers on obtaining a needed MCO or MSO. For assistance, please contact your State's Department of Motor Vehicles (DMV) or see the American Association of Motor Vehicle Administrators web site:

<http://www.aamva.org/WorkArea/linkit.aspx?LinkIdentifier=id&ItemID=2756&libID=2742>

B. Search the United States Code

To search the United States Code, follow this link: <http://uscode.house.gov/>

C. Search the Code of Federal Regulations

To search the Code of Federal Regulations, follow this link: http://www.ecfr.gov/cgi-bin/text-idx?SID=35d5b4afc677161252dac6b792885b1f&tpl=/ecfrbrowse/Title49/49tab_02.tpl

D. Search the Federal Register

To search the Federal Register, follow this link: <http://www.gpo.gov/fdsys/search/home.action>

E. Search NHTSA Interpretations

To search NHTSA Interpretation letters, follow this link: <http://isearch.nhtsa.gov>

F. FMVSS Compliance Test Procedures

For FMVSS Compliance Test Procedures, follow this link: www.nhtsa.gov/Vehicle+Safety/Test+Procedures

G. Motorcycle and motorcycle frame engineering reports

Engineering reports for motorcycles and motorcycle frames are available on a fee basis through the SAE. See that organization's web site at www.sae.org

Appendices

Appendix 1 - Part 551 - Designate a permanent resident of the United States as its agent for service of process.

OMB No. 2127-0040
Expiration Date: 07/31/2009

Paperwork Reduction Act Burden Statement

A federal agency may not conduct or sponsor, and a person is not required to respond to, nor shall a person be subject to a penalty for failure to comply with a collection of information subject to the requirements of the Paperwork Reduction Act unless that collection of information displays a current valid OMB Control Number. The OMB Control Number for this information collection is 2127-0040. Public reporting for this collection of information is estimated to be approximately 30 minutes per response, including the time for reviewing instructions, completing and reviewing the collection of information. All responses to this collection of information are mandatory. Send comments regarding this burden estimate or any other aspect of this collection of information, including suggestions for reducing this burden to: Information Collection Clearance Officer, National Highway Traffic Safety Administration, 1200 New Jersey Avenue, SE, Washington, D.C. 20590.

SUGGESTED DESIGNATION OF AGENT FOR SERVICE OF PROCESS UNDER 49 U.S.C. § 30164 and 49 C.F.R. Part 551, Subpart D

PART A: DESIGNATION BY FOREIGN MANUFACTURER

Pursuant to 49 U.S.C. § 30164 and 49 C.F.R. Part 551, Subpart D, the Foreign Manufacturer listed below hereby designates the following Agent on whom service of all administrative and judicial processes and notices may be made. This designation is for service of process only and for no other purpose. It shall remain in effect until it is withdrawn or another Agent is designated in accordance with the requirements of 49 U.S.C. § 30164 and 49 C.F.R. Part 551, Subpart D.

The Manufacturer identified below hereby certifies:

1. This designation is in valid form and binding on the Manufacturer under the laws, corporate bylaws or other requirements governing the making of designations at the place and time where it is made.
2. The full legal name, principal place of business and mailing address of the Manufacturer are:

3. The Manufacturer's products will be sold under the following trade or brand names, marks, logos or other designations of origin (**List all names, marks, logos or designations**): _____

4. The full legal name, principal place of business, mailing address and telephone number of the Agent are: _____

By: _____ / /
Signature of Manufacturer's Authorized Representative Month / Day / Year

Printed Name

Title

[Note: Part B of the form continues on the next page]

PART B: ACCEPTANCE BY AGENT

The undersigned hereby accepts appointment as Agent solely for the purpose of service of process on the Manufacturer under 49 U.S.C. § 30164 and 49 C.F.R. Part 551, Subpart D. I understand that this appointment shall remain in effect until withdrawn or replaced by the Manufacturer in accordance with the requirements of 49 U.S.C. § 30164 and 49 C.F.R. Part 551, Subpart D. I understand also that I may not assign performance of my functions under this Designation to another person.

By: _____
 Signature of Agent _____/_____/_____
 Month / Day / Year
**(Date of acceptance must be
 on or after date of designation)**

 Printed Name

 Title

Mail original documents with ink signatures only to: U.S. Department of Transportation, NHTSA
 Correspondence Unit, 1200 New Jersey Avenue, SE, Room W41-306, Washington, D.C. 20590

Please note that:

- Manufacturers must submit to NHTSA **original**, fully executed designation forms with **ink signatures**. NHTSA will not accept copies of designation forms, facsimiles, emails, emailed PDF files, or forms that do not contain original ink signatures.
- The date of acceptance by an agent must be **on or after** the date of designation by a foreign manufacturer.
- Designation forms must be submitted to U.S. Department of Transportation, NHTSA Correspondence Unit, 1200 New Jersey Avenue, SE, Room W41-306, Washington, D.C. 20590. No other NHTSA office is authorized to accept designation documents. To avoid delays, the agency suggests using express mail services.

Questions?

For further assistance or with questions about the requirements of Part 551, Subpart D, please email Ms. Jin Kim at Jin.Kim@dot.gov.

Appendix 2 - Part 566 Manufacturer Identification

Suggested Form for the Part 566 submission

MANUFACTURER AND PRODUCT IDENTIFICATION*(Suggested form to comply with 49 CFR Part 566)*

Manufacturer's Information					Submission Type: <input type="checkbox"/> Initial <input type="checkbox"/> Revision	
Full Name of Company:						
All Company DBAs:						
Company Principal Officer:						
Last		First		Position		
Company Address:						
Street, Suite No., P.O. Box No.			City	State (Province)	Country	Zip Code
Company Contact Info:						
Telephone		Fax	Email	Web Site		
Submitted by Company Official:						
Printed Name		Company Position		Signature	Date	
Your Company Manufactures What Regulated <u>Equipment</u> Items? (check all that apply)						
<i>(Regulated equipment items are only the 13 equipment items listed below that are subject to a Federal motor vehicle safety standard)</i>						
<input type="checkbox"/> Tires	<input type="checkbox"/> Rims	<input type="checkbox"/> Brake hoses	<input type="checkbox"/> Brake fluid	<input type="checkbox"/> Seat belts	<input type="checkbox"/> Lamps, Reflectors, and Assoc. Equip.	<input type="checkbox"/> Motorcycle Helmets
<input type="checkbox"/> Glazing	<input type="checkbox"/> Child Restraint Systems	<input type="checkbox"/> Platform Lifts	<input type="checkbox"/> Rear Impact Guards	<input type="checkbox"/> Triangular Warning Devices	<input type="checkbox"/> CNG Containers	
Your Company Manufactures What Types of <u>Vehicles</u> ? (check all that apply)						
<i>(Please identify the approximate GVWR Range (in pounds) in the space provided)</i>						
<input type="checkbox"/> Passenger Cars GVWR _____ - _____	<input type="checkbox"/> Multipurpose Passenger Vehs. GVWR _____ - _____	<input type="checkbox"/> Trucks GVWR _____ - _____	<input type="checkbox"/> Low-Speed Vehicles GVWR _____ - _____	<input type="checkbox"/> Motorcycles GVWR _____ - _____		
<input type="checkbox"/> Trailers GVWR _____ - _____	<input type="checkbox"/> Pole trailers GVWR _____ - _____	<input type="checkbox"/> Buses (other than School Buses) GVWR _____ - _____	<input type="checkbox"/> School Buses GVWR _____ - _____			
<input type="checkbox"/> Incomplete vehicles – means an assemblage consisting, at a minimum, of chassis (including the frame) structure, power train, steering system, suspension system, and braking system, in the state that those systems are to be part of the completed vehicle, but requires further manufacturing operations to become a completed vehicle. Also means an incomplete trailer. GVWR _____ - _____						

Appendix 2 - (Continued) Part 566 Manufacturer Identification

What Type of Vehicle Manufacturer or Alterer is Your Company? (check all that apply)	
<i>Note: If you are a completed vehicle or incomplete vehicle manufacturer, you must also submit VIN deciphering info under 49 CFR Part 565</i>	
<input type="checkbox"/>	Completed Vehicle Manufacturer - a manufacturer of vehicles that require no further manufacturing operations to perform their intended function
<input type="checkbox"/>	Incomplete Vehicle Manufacturer - a manufacturer of incomplete vehicles, as defined above
<input type="checkbox"/>	Intermediate Manufacturer - a manufacturer (other than the incomplete vehicle manufacturer or the final-stage manufacturer) who performs manufacturing operations on a vehicle manufactured in two or more stages
<input type="checkbox"/>	Final-Stage Manufacturer - a manufacturer who performs such manufacturing operations on an incomplete vehicle that it becomes a completed vehicle
<input type="checkbox"/>	Alterer - a person who alters by addition, substitution, or removal of components (other than readily attachable components), a <u>certified</u> vehicle before the first purchase of the vehicle other than for resale
Instructions for Completing, Revising, and Submitting Your Information	
<p><i>49 CFR Part 566 requires that a manufacturer of motor vehicles and regulated motor vehicle equipment items submit to NHTSA not later than 30 days after manufacturing begins, information about the company and the products it manufactures. This suggested form will assist a manufacturer to comply with Part 566. Please complete the form by typing or clearly printing. Each manufacturer who has submitted this information must keep its entry current, accurate, and complete by submitting revised information not later than 30 days after the relevant changes in its business occur.</i></p>	<p><i>Mail the completed form to:</i> Attention: VIN Coordinator National Highway Traffic Safety Administration 1200 New Jersey Avenue, SE West Building, Room W45-207 Washington, DC 20590 Fax: 202-366-3081</p>

This sample form may be completed after downloading it from the link:

<ftp://ftp.nhtsa.dot.gov/manufacture>

Select the directory "Manufacturer Suggested Forms"

Select the file "01 Manufacturer and Product Identification.pdf"

or Select the link:

<ftp://ftp.nhtsa.dot.gov/manufacture/Manufacturer%20Suggested%20Forms/01%20Manufacturer%20and%20Product%20Identification.pdf>

Appendix 3 - Sample spreadsheet format to calculate a VIN check digit

POSITION	1	2	3	4	5	6	7	8	9	10	11	12	13	14	15	16	17	
CURRENT VIN	1	z	9	p	e	5	5	0	6	9	s	3	5	5	0	0	1	Your VIN
CONVERT TO NUMBER	1	9	9	7	5	5	5	0		9	2	3	5	5	0	0	1	
MULTIPLIER	8	7	6	5	4	3	2	10		9	8	7	6	5	4	3	2	
RESULT	8	63	54	35	20	15	10	0		81	16	21	30	25	0	0	2	380
DIVIDE																		11
TRUNCATED																		34
REMAINDER																		6

Appendix 4 – Part 565 Vehicle Identification Number - Trailers

Sample VIN Deciphering Submission – USA Trailer Company

Date: July 4, 20XX

Administrator
National Highway Traffic Safety Administration
1200 New Jersey Avenue SE W43-488
Washington, DC 20590
Attention: VIN Coordinator

RE: Vehicle Identification Number Deciphering Information

In accordance with 49 CFR Part 565, *Vehicle Identification Number Requirements*, USA Trailer Company, Inc. is submitting information necessary to decipher the characters contained in its Vehicle Identification Numbers. Please see the attachment.

USA Trailer Company, Inc. is a low-volume trailer manufacturer assigned WMI: 1ZZ/400. If you have any questions, please contact me at (555) 555-0000.

Sincerely,

John Doe
USA Trailer Company, Inc.
345 Main St.
Anywhere, USA

Attachment

Appendix 4 (Continued) – Part 565 Vehicle Identification Number - Trailers

Sample VIN Deciphering Submission – USA Trailer Company

VIN Deciphering		
1st Section		
Position 1	WMI	1-Assigned by SAE
Position 2	WMI	Z-Assigned by SAE
Position 3	WMI	Z-Assigned by SAE
2nd Section		
Position 4	Make	U=USA Trailer Co.
Position 5	Type of Trailer	1= Ball Type Pull 2= Pintle Hitch 3=Gooseneck 4= Straight Semi 5= Fifth Wheel 6=Kingpin
Position 6	Body Type	A=Snowmobile Trailer B=Boat Trailer C=Car Hauler Trailer D=Dump Trailer E=Enclosed Trailer F=Flatbed Trailer G=Curtain Side Trailer H=Hydraulic Dovetail J=Double Drop Trailer K=Camper Trailer L=Lowboy Trailer
Position 7	Length	6=6 feet long 9=9 feet long A=26 feet long
Position 8	Axle configuration	1=Single Axle 2=2 Axles 3=3 Axles
3rd Section		
Position 9	Check Digit	Calculated See 49 CFR 565.15(c)
4th Section		
Position 10	Model Year	A= 2010 B=2011 C=2012
Position 11	Plant of Manufacture	A=Baltimore, MD, USA B=Flint, MI, USA
Position 12	WMI	4-Assigned by SAE
Position 13	WMI	0-Assigned by SAE
Position 14	WMI	0-Assigned by SAE
Position 15	Sequentially Assigned	
Position 16		
Position 17		

Appendix 4 (Continued) – Part 565 Vehicle Identification Number - Motorcycles

Sample VIN deciphering submission – USA Motorcycle Company

Date: July 4, 20XX

Administrator
National Highway Traffic Safety Administration
1200 New Jersey Avenue SE W43-488
Washington, DC 20590
Attention: VIN Coordinator

RE: Vehicle Identification Number Deciphering Information

In accordance with 49 CFR Part 565, *Vehicle Identification Number Requirements*, USA Motorcycle Company, Inc. is submitting information necessary to decipher the characters contained in its Vehicle Identification Numbers. Please see the attachment.

USA Motorcycle Company, Inc. is a low-volume MPV manufacturer assigned WMI: 1ZZ/401. If you have any questions, please contact me at (555) 555-0000.

Sincerely,

John Doe
USA Motorcycle Company, Inc.
345 Main St.
Anywhere, USA

Attachment

Appendix 4 (Continued) – Part 565 Vehicle Identification Number - Motorcycles

Sample VIN deciphering submission – USA Motorcycle Company

VIN Deciphering		
1st Section		
Position 1	WMI	1- Assigned by SAE
Position 2	WMI	Z- Assigned by SAE
Position 3	WMI	Z- Assigned by SAE
2nd Section		
Position 4	Make	R = USA MOTORCYCLE COMPANY
Position 5	Line or Model	A = Winner A B = Winner B C = Winner C
Position 6	Type of Motorcycle	1 = Scooter 2 = Sport Bike 3 = Cruiser
Position 7	Engine Type	A = V-2, 200 cc, gas B = V-4, 400 cc, gas C = V-8, 1,000 cc, gas
Position 8	Net Brake HP	1 = 15hp 2 = 36hp 3 = 75hp
3rd Section		
Position 9	Check Digit	Calculated See 49 CFR 565.15(c)
4th Section		
Position 10	Model Year	A= MY2010 B=MY2011 C=MY2012 D=MY2013
Position 11	Plant of Manufacture	A=Baltimore, MD, USA
Position 12	WMI	4- Assigned by SAE
Position 13	WMI	0- Assigned by SAE
Position 14	WMI	1- Assigned by SAE
Position 15	Sequentially Assigned	
Position 16		
Position 17		

Appendix 4 (Continued) – Part 565 Vehicle Identification Number – Multipurpose Passenger Vehicles

Sample VIN deciphering submission – USA MPV Company

Date: July 4, 20XX

Administrator
National Highway Traffic Safety Administration
1200 New Jersey Avenue SE W43-488
Washington, DC 20590
Attention: VIN Coordinator

RE: Vehicle Identification Number Deciphering Information

In accordance with 49 CFR Part 565, *Vehicle Identification Number Requirements*, USA MPV Company, Inc. is submitting information necessary to decipher the characters contained in its Vehicle Identification Numbers. Please see the attachment.

USA MPV Company, Inc. is a low-volume MPV manufacturer assigned WMI: 1ZZ/400. If you have any questions, please contact me at (555) 555-0000.

Sincerely,

John Doe
USA MPV Company, Inc.
345 Main St.
Anywhere, USA

Attachment

Appendix 4 (Continued) – Part 565 Vehicle Identification Number - Multipurpose Passenger Vehicles

Sample VIN deciphering submission – USA MPV Company

VIN Deciphering		
1st Section		
Position 1	WMI	1- Assigned by SAE
Position 2	WMI	Z- Assigned by SAE
Position 3	WMI	Z- Assigned by SAE
2nd Section		
Positions 4 -8	See Chart 1	
3rd Section		
Position 9	Check Digit	Calculated See 49 CFR 565.15(c)
4th Section		
Position 10	Model Year	A=MY2010 B=MY2011 C=MY2012 D=MY2013
Position 11	Plant of Manufacture	A=Baltimore, MD, USA B=Flint, MI, USA
Position 12	WMI	4- Assigned by SAE
Position 13	WMI	0- Assigned by SAE
Position 14	WMI	0- Assigned by SAE
Position 15	Sequentially Assigned	
Position 16		
Position 17		

Chart 1			
Positions 4-8	RP1A3	RP1B3	RP1C3
Make	USA MPV Co	USA MPV Co	USA MPV Co
Line or Model	Craggy	Craggy	Craggy
Series	3200	3250	3275
Body Type	5-Dr. Liftback	5-Dr. Liftback	5-Dr. Liftback
Engine Type	3.8L 6-cyl. 280 hp gas	3.8L 6-cyl. 280 hp gas	3.8L 6-cyl. 280 hp gas
GVWR Class	C	C	C
C = Greater than 1814 kg. to 2268 kg. (4,001–5,000 lbs.)			
Restraint Front	1	1	1
1 = Seat Belt, Air Bag, Side Air Bag, and Side Curtain Air Bag (Driver and Passenger)			
Restraint Mid	2	2	2
Restraint Rear	2	2	2
2 = Seat Belt and Side Curtain Air Bag			

Appendix 4 (Continued) – Part 565 Vehicle Identification Number – Passenger Cars

Sample VIN Deciphering Submission – USA Passenger Car Company

Date: July 4, 20XX

Administrator
National Highway Traffic Safety Administration
1200 New Jersey Avenue SE W43-488
Washington, DC 20590
Attention: VIN Coordinator

RE: Vehicle Identification Number Deciphering Information

In accordance with 49 CFR Part 565, *Vehicle Identification Number Requirements*, USA Passenger Car Company, Inc. is submitting information necessary to decipher the characters contained in its Vehicle Identification Numbers. Please see the attachment.

USA Passenger Car Company, Inc. is a low-volume passenger car manufacturer assigned WMI: 1J9/640. If you have any questions, please contact me at (555) 555-0000.

Sincerely,

John Doe
USA Passenger Car Company, Inc.
345 Main St.
Anywhere, USA

Attachment

Appendix 4 (Continued) – Part 565 Vehicle Identification Number – Passenger Cars

Sample VIN Deciphering Submission – USA Passenger Car Company

VIN Deciphering		
1st Section		
Position 1	WMI	1- Assigned by SAE
Position 2	WMI	J- Assigned by SAE
Position 3	WMI	9- Assigned by SAE
2nd Section		
Positions 4 to 8	See Chart 1	
3rd Section		
Position 9	Check Digit	Calculated See 49 CFR 565.15(c)
4th Section		
Position 10	Model Year	A= MY2010 B=MY2011 C=MY2012 D=MY2013
Position 11	Plant of Manufacture	A=Baltimore, MD, USA B=Flint, MI, USA
Position 12	WMI	6- Assigned by SAE
Position 13	WMI	4- Assigned by SAE
Position 14	WMI	0- Assigned by SAE
Position 15	Sequentially Assigned	
Position 16		
Position 17		

Chart 1			
Positions 4-8	RP1A3	RP1B3	RP1C3
Make	USA Car Co	USA Car Co	USA Car Co
Line or Model	Super	Super	Super
Series	LV	MV	HV
Body Type	3 Dr Coupe	3 Dr Coupe	3 Dr Coupe
Engine Type	2.4L 4-cyl. 180 hp gas	2.4L 4-cyl. 180 hp gas	2.4L 4-cyl. 180 hp gas
GVWR Class	A	A	A
A = Not greater than 1360 kg. (3,000 lbs.)			
Restraint Front	1	1	1
1 = Seat Belt, Air Bag, Side Air Bag, and Side Curtain Air Bag (Driver and Passenger)			
Restraint Mid	N/A	N/A	N/A
Restraint Rear	2	2	2
2 = Seat Belt and Side Curtain Air Bag			

Appendix 5 – Suggested New Tire Manufacturer Application

Application for New Tire Manufacturer Identification

New Tire Manufacturer's Plant Information

Plant Contact Name:	<input type="text"/>	<input type="text"/>	<input type="text"/>
	<i>Last</i>	<i>First</i>	<i>Position</i>
Plant Name:	<input type="text"/>		
Business Address:	<input type="text"/>		
	<i>Street, Suite No., P.O. Box No.</i>		
	<input type="text"/>	<input type="text"/>	<input type="text"/>
	<i>City</i>	<i>State/Province</i>	<i>Country</i>
			<i>Postal Code</i>
Plant Contact Info.:	<input type="text"/>	<input type="text"/>	<input type="text"/>
	<i>Telephone</i>	<i>Facsimile</i>	<i>E-mail</i>

New Tire Company's Main Office Information

Company Contact Name:	<input type="text"/>	<input type="text"/>	<input type="text"/>
	<i>Last</i>	<i>First</i>	<i>Position</i>
Company Name:	<input type="text"/>		
Business Address:	<input type="text"/>		
	<i>Street, Suite No., P.O. Box No.</i>		
	<input type="text"/>	<input type="text"/>	<input type="text"/>
	<i>City</i>	<i>State/Province</i>	<i>Country</i>
			<i>Postal Code</i>
Company Contact Info.:	<input type="text"/>	<input type="text"/>	<input type="text"/>
	<i>Telephone</i>	<i>Facsimile</i>	<i>E-mail</i>

New Tire Company's U.S. Resident as Agent as identified in the separate 49 CFR Part 551 submission (Complete agent information only if this application is for a foreign manufacturer)

Agent Name:	<input type="text"/>	<input type="text"/>
	<i>Last</i>	<i>First</i>
Business Address:	<input type="text"/>	<input type="text"/>
	<i>Street, Suite No., P.O. Box No.</i>	<i>City</i>
		<i>State</i>
		<i>Zip Code</i>
Agent Contact Info.:	<input type="text"/>	<input type="text"/>
	<i>Telephone</i>	<i>Facsimile</i>
		<i>E-mail</i>

Appendix 5 (Continued) – Suggested New Tire Manufacturer Application

Type of New Tires Manufactured at Plant (check all that apply)		
Pneumatic Tires for:	<input type="checkbox"/> Cars	<input type="checkbox"/> MPVs
	<input type="checkbox"/> Trucks	<input type="checkbox"/> Buses
	<input type="checkbox"/> Motorcycles	<input type="checkbox"/> Trailers
	<input type="checkbox"/> LSVs	
	<input type="checkbox"/> Non-pneumatic tires	<input type="checkbox"/> Non-pneumatic tire assemblies

Application Completion		
Application Completed By:	<input type="text"/>	<input type="text"/>
	<i>Last</i>	<i>First</i>
		<input type="text"/>
		<i>Date</i>

Instructions For Application Submission	
<p><i>This suggested form will assist a manufacturer to comply with applying for New Tire Manufacturer's Identification. Please complete the form by typing or clearly printing. Each manufacturer who has submitted this information must keep its entry current, accurate, and complete by submitting revised information not later than 30 days after the relevant changes in its business occur.</i></p>	<p><i>Mail, Fax or E-mail the completed form to:</i> Attention: Vehicle Equipment and Component Coordinator National Highway Traffic Safety Administration 1200 New Jersey Avenue, SE West Building, Room W45-207 Washington, DC 20580 Fax: 202-366-3081 E-mail: jeanette.greenfield.ctr@dot.gov</p>

This sample form may be completed after downloading it from the link:

<ftp://ftp.nhtsa.dot.gov/manufacture>

Select the directory "Manufacturer Suggested Forms"

Select the file "02 New Tire Application.pdf"

or Select the link:

<ftp://ftp.nhtsa.dot.gov/manufacture/Manufacturer%20Suggested%20Forms/02%20New%20Tire%20Application.pdf>

Appendix 5 (Continued) – Suggested Retreaded Tire Manufacturer Application

Application for Retreaded Tire Manufacturer Identification

Retreaded Tire Manufacturer's Plant Information

Plant Contact Name:	<input style="width: 95%;" type="text"/>	<input style="width: 95%;" type="text"/>	<input style="width: 95%;" type="text"/>
	<i>Last</i>	<i>First</i>	<i>Position</i>
Plant Name:	<input style="width: 95%;" type="text"/>		
Business Address:	<input style="width: 95%;" type="text"/>		
	<i>Street, Suite No., P.O. Box No.</i>		
	<input style="width: 25%;" type="text"/>	<input style="width: 25%;" type="text"/>	<input style="width: 25%;" type="text"/>
	<i>City</i>	<i>State/Province</i>	<i>Country</i>
Plant Contact Info.:	<input style="width: 25%;" type="text"/>	<input style="width: 25%;" type="text"/>	<input style="width: 50%;" type="text"/>
	<i>Telephone</i>	<i>Facsimile</i>	<i>E-mail</i>

Retreaded Tire Company's Main Office Information

Company Contact Name:	<input style="width: 95%;" type="text"/>	<input style="width: 95%;" type="text"/>	<input style="width: 95%;" type="text"/>
	<i>Last</i>	<i>First</i>	<i>Position</i>
Company Name:	<input style="width: 95%;" type="text"/>		
Business Address:	<input style="width: 95%;" type="text"/>		
	<i>Street, Suite No., P.O. Box No.</i>		
	<input style="width: 25%;" type="text"/>	<input style="width: 25%;" type="text"/>	<input style="width: 25%;" type="text"/>
	<i>City</i>	<i>State/Province</i>	<i>Country</i>
Company Contact Info.:	<input style="width: 25%;" type="text"/>	<input style="width: 25%;" type="text"/>	<input style="width: 50%;" type="text"/>
	<i>Telephone</i>	<i>Facsimile</i>	<i>E-mail</i>

Retreaded Tire Company's U.S. Resident as Agent as identified in the separate 49 CFR Part 551 submission (Complete agent information only if this application is for a foreign manufacturer)

Agent Name:	<input style="width: 95%;" type="text"/>	<input style="width: 95%;" type="text"/>
	<i>Last</i>	<i>First</i>
Business Address:	<input style="width: 35%;" type="text"/>	<input style="width: 20%;" type="text"/>
	<i>Street, Suite No., P.O. Box No.</i>	<i>City</i>
	<input style="width: 15%;" type="text"/>	<input style="width: 15%;" type="text"/>
	<i>State</i>	<i>Zip Code</i>
Agent Contact Info.:	<input style="width: 25%;" type="text"/>	<input style="width: 50%;" type="text"/>
	<i>Telephone</i>	<i>E-mail</i>

Appendix 5 (Continued) – Suggested Retreaded Tire Manufacturer Application

Type of Retreaded Tires Manufactured at Plant (check all that apply)							
Pneumatic Tires for:	<input type="checkbox"/> Cars	<input type="checkbox"/> MPVs	<input type="checkbox"/> Trucks	<input type="checkbox"/> Buses	<input type="checkbox"/> Motorcycles	<input type="checkbox"/> Trailers	<input type="checkbox"/> LSVs
Application Completion							
Application Completed By:	<input type="text"/>	<input type="text"/>	<input type="text"/>				
	<i>Last</i>	<i>First</i>	<i>Date</i>				
Instructions For Application Submission							
<p><i>This suggested form will assist a manufacturer to comply with applying for Retread Tire Manufacturer's Identification. Please complete the form by typing or clearly printing. Each manufacturer who has submitted this information must keep its entry current, accurate, and complete by submitting revised information not later than 30 days after the relevant changes in its business occur.</i></p>		<p><i>Mail, Fax or E-mail the completed form to:</i> Attention: Vehicle Equipment and Component Coordinator National Highway Traffic Safety Administration 1200 New Jersey Avenue, SE West Building, Room W45-207 Washington, DC 20590 Fax: 202-366-3081 E-mail: jeanette.greenfield.ctr@dot.gov</p>					

This sample form may be completed after downloading it from the link:

<ftp://ftp.nhtsa.dot.gov/manufacture>

Select the directory "Manufacturer Suggested Forms"

Select the file "03 Retread Tire Application.pdf"

or Select the link:

<ftp://ftp.nhtsa.dot.gov/manufacture/Manufacturer%20Suggested%20Forms/03%20Retread%20Tire%20Application.pdf>

Appendix 5 (Continued) – Suggested Brake Hose Manufacturer Application

Application for Brake Hose Manufacturer Identification

Brake Hose Assembler/Manufacturer's Plant Information

Plant Contact Name:	<input type="text"/>	<input type="text"/>	<input type="text"/>
	<i>Last</i>	<i>First</i>	<i>Position</i>
Plant Name:	<input type="text"/>		
Business Address:	<input type="text"/>		
	<i>Street, Suite No., P.O. Box No.</i>		
	<input type="text"/>	<input type="text"/>	<input type="text"/>
	<i>City</i>	<i>State/Province</i>	<i>Country</i>
			<i>Postal Code</i>
Plant Contact Info.:	<input type="text"/>	<input type="text"/>	<input type="text"/>
	<i>Telephone</i>	<i>Facsimile</i>	<i>E-mail</i>

Brake Hose Assembler/Manufacturer's Designation Symbol Information (The symbol you will use on your brake hose)

Brake Hose Assembler/Manufacturer's U.S. Resident as Agent as identified in the separate 49 CFR Part 551 submission (Complete agent information only if this application is for a foreign manufacturer)

Agent Name:	<input type="text"/>	<input type="text"/>	
	<i>Last</i>	<i>First</i>	
Business Address:	<input type="text"/>	<input type="text"/>	<input type="text"/>
	<i>Street, Suite No., P.O. Box No.</i>	<i>City</i>	<i>State</i>
			<i>Zip Code</i>
Agent Contact Info.:	<input type="text"/>	<input type="text"/>	<input type="text"/>
	<i>Telephone</i>	<i>Facsimile</i>	<i>E-mail</i>

Application Completed By

<input type="text"/>	<input type="text"/>	<input type="text"/>	<input type="text"/>
<i>Last</i>	<i>First</i>	<i>Date</i>	<i>E-mail</i>

Instructions For Application Submission

This suggested form will assist a manufacturer to comply with applying for Brake Hose Manufacturer's Identification. Please complete the form by typing or clearly printing. Each manufacturer who has submitted this information must keep its entry current, accurate, and complete by submitting revised information not later than 30 days after the relevant changes in its business occur.

Mail, Fax or E-mail the completed form to:
Attention: Vehicle Equipment and Component Coordinator
 National Highway Traffic Safety Administration
 1200 New Jersey Avenue, SE
 West Building, Room W45-207
 Washington, DC 20590
 Fax: 202-366-3081
 E-mail: jeanette.greenfield.ctr@dot.gov

Appendix 5 (Continued) – Suggested Brake Hose Manufacturer Application

This sample form may be completed after downloading it from the link:

<ftp://ftp.nhtsa.dot.gov/manufacture>

Select the directory "Manufacturer Suggested Forms"

Select the file "04 Brake Hose Application.pdf"

or Select the link:

<ftp://ftp.nhtsa.dot.gov/manufacture/Manufacturer%20Suggested%20Forms/04%20Brake%20Hose%20Application.pdf>

Appendix 5 – (Continued) Suggested Glazing Manufacturer Application

Application for Glazing Material Manufacturer Identification

Glazing Material Manufacturer's Plant Information

Plant Contact Name:	<input style="width: 95%;" type="text"/>	<input style="width: 95%;" type="text"/>	<input style="width: 95%;" type="text"/>
	<i>Last</i>	<i>First</i>	<i>Position</i>
Plant Name:	<input style="width: 98%;" type="text"/>		
Business Address:	<input style="width: 98%;" type="text"/>		
	<i>Street, Suite No., P.O. Box No.</i>		
	<input style="width: 25%;" type="text"/>	<input style="width: 25%;" type="text"/>	<input style="width: 25%;" type="text"/>
	<i>City</i>	<i>State/Province</i>	<i>Country</i>
Plant Contact Info.:	<input style="width: 25%;" type="text"/>	<input style="width: 25%;" type="text"/>	<input style="width: 25%;" type="text"/>
	<i>Telephone</i>	<i>Facsimile</i>	<i>E-mail</i>

Glazing Company's Main Office Information

Company Contact Name:	<input style="width: 95%;" type="text"/>	<input style="width: 95%;" type="text"/>	<input style="width: 95%;" type="text"/>
	<i>Last</i>	<i>First</i>	<i>Position</i>
Company Name:	<input style="width: 98%;" type="text"/>		
Business Address:	<input style="width: 98%;" type="text"/>		
	<i>Street, Suite No., P.O. Box No.</i>		
	<input style="width: 25%;" type="text"/>	<input style="width: 25%;" type="text"/>	<input style="width: 25%;" type="text"/>
	<i>City</i>	<i>State/Province</i>	<i>Country</i>
Company Contact Info.:	<input style="width: 25%;" type="text"/>	<input style="width: 25%;" type="text"/>	<input style="width: 25%;" type="text"/>
	<i>Telephone</i>	<i>Facsimile</i>	<i>E-mail</i>

Glazing Material Company's U.S. Resident as Agent as identified in the separate 49 CFR Part 551 submission (Complete agent information only if this application is for a foreign manufacturer)

Agent Name:	<input style="width: 95%;" type="text"/>	<input style="width: 95%;" type="text"/>
	<i>Last</i>	<i>First</i>
Business Address:	<input style="width: 30%;" type="text"/>	<input style="width: 20%;" type="text"/>
	<i>Street, Suite No., P.O. Box No.</i>	<i>City</i>
	<input style="width: 15%;" type="text"/>	<input style="width: 15%;" type="text"/>
	<i>State</i>	<i>Zip Code</i>
Agent Contact Info.:	<input style="width: 25%;" type="text"/>	<input style="width: 25%;" type="text"/>
	<i>Telephone</i>	<i>Facsimile</i>
	<input style="width: 50%;" type="text"/>	
	<i>E-mail</i>	

Appendix 5 – (Continued) Suggested Glazing Manufacturer Application

Questions		
Are you a manufacturer that cuts a section of glazing materials?	<input type="checkbox"/> Yes	<input type="checkbox"/> No
Are you a distributor that cuts a section of glazing materials?	<input type="checkbox"/> Yes	<input type="checkbox"/> No
Application Completed By:		
<i>Last</i>	<i>First</i>	<i>Date</i>
Instructions For Application Submission		
<p><i>This suggested form will assist a manufacturer to comply with applying for Glazing Manufacturer's Identification. Please complete the form by typing or clearly printing. Each manufacturer who has submitted this information must keep its entry current, accurate, and complete by submitting revised information not later than 30 days after the relevant changes in its business occur.</i></p>		<p><i>Mail, Fax or E-mail the completed form to:</i> Attention: Vehicle Equipment and Component Coordinator National Highway Traffic Safety Administration 1200 New Jersey Avenue, SE West Building, Room W45-207 Washington, DC 20590 Fax: 202-366-3081 E-mail: jeanette.greenfield.ctr@dot.gov</p>

This sample form may be completed after downloading it from the link:

<ftp://ftp.nhtsa.dot.gov/manufacture>

Select the directory "Manufacturer Suggested Forms"

Select the file "05 Glazing Application.pdf"

or Select the link:

<ftp://ftp.nhtsa.dot.gov/manufacture/Manufacturer%20Suggested%20Forms/05%20Glazing%20Application.pdf>

Appendix 6 – Part 567 Certification Labels

Sample manufacturer's certification label for a motorcycle/motor-driven cycle

MFD BY: USA MOTORCYCLE MANUFACTURERS, INC. DATE OF MFG: 03/09 GVWR: 271 KG (598 LB)			
FRONT GAWR	WITH TIRES	RIMS AT	COLD
110 KG (243 LB)	120/70R18 59V	18XMT3.00	290 KPA (42 PSI)
REAR GAWR	WITH TIRES	RIMS AT	COLD
161 KG (355 LB)	160/60R17 69V	17XMT4.00	290 KPA (42 PSI)
THIS VEHICLE CONFORMS TO ALL APPLICABLE FEDERAL MOTOR VEHICLE SAFETY STANDARDS IN EFFECT ON THE DATE OF MANUFACTURE SHOWN ABOVE.			
VIN	XXXXXXXXXXXXXXXXXX		TYPE: MOTORCYCLE

Sample manufacturer's certification label for a trailer

MFD BY: USA TRAILER MANUFACTURERS, CO. DATE OF MFG: 03/09 GVWR: 8,164 KG (18,000 LB)			
FRONT GAWR	WITH TIRES	RIMS AT	COLD
4,354 KG (9,600 LB)	11R17.5HC(H)	17.5X8.25HC	827 KPA (120PSI) SINGLE
REAR GAWR	WITH TIRES	RIMS AT	COLD
4,354 KG (9,600 LB)	11R17.5HC(H)	17.5X8.25HC	827 KPA (120 PSI) SINGLE
THIS VEHICLE CONFORMS TO ALL APPLICABLE FEDERAL MOTOR VEHICLE SAFETY STANDARDS IN EFFECT ON THE DATE OF MANUFACTURE SHOWN ABOVE.			
VIN:	XXXXXXXXXXXXXXXXXX		TYPE: TRAILER

Sample manufacturer's certification label for a low-speed vehicle

MANUFACTURED BY: USA LOW SPEED VEHICLES, INC. DATE OF MFD: 03/09 GVWR: 1260 KG (2778 LB)			
FRONT GAWR	WITH TIRES	RIMS AT	COLD
630 KG (1389 LB)	20.5 X 8.0 – 10 B	10 x 6JA	240 KPA (35 PSI) SINGLE
REAR GAWR	WITH TIRES	RIMS AT	COLD
630 KG (1389 LB)	20.5 X 8.0 – 10 B	10 x 6JA	240 KPA (35 PSI) SINGLE
THIS VEHICLE CONFORMS TO ALL APPLICABLE FEDERAL MOTOR VEHICLE SAFETY STANDARDS IN EFFECT ON THE DATE OF MANUFACTURE SHOWN ABOVE.			
VIN	XXXXXXXXXXXXXXXXXX		TYPE: LOW-SPEED VEHICLE

Sample manufacturer's certification label for a multipurpose passenger vehicle

MFD BY: USA MPV MANUFACTURERS, INC. DATE OF MFG: 03/09 GVWR: 2,745 KG (6,050 LB)			
FRONT GAWR	WITH TIRES	RIMS AT	COLD
1,339 KG (2,950 LB)	225/65R16	16X6.5	250 KPA (36 PSI)
REAR GAWR	WITH TIRES	RIMS AT	COLD
1,407 KG (3,100 LB)	225/65R16	16X6.5	250 KPA (36 PSI)
THIS VEHICLE CONFORMS TO ALL APPLICABLE FEDERAL MOTOR VEHICLE SAFETY AND THEFT PREVENTION STANDARDS IN EFFECT ON THE DATE OF MANUFACTURE SHOWN ABOVE.			
VIN:	XXXXXXXXXXXXXXXXXX		TYPE: MPV

Appendix 6 (Continued) – Part 567 Certification Labels


Sample manufacturer's certification label for a truck

MFD BY: USA TRUCK MANUFACTURERS, CO.		DATE OF MFG: 03/09	GVWR: 4,083 KG (9,000 LB)
FRONT GAWR 2,359 KG (5,200 LB)	WITH TIRES LT265/70R17E	RIMS AT 17X8.0	COLD 410 KPA (60 PSI) SINGLE
REAR GAWR 2,727 KG (6,010 LB)	WITH TIRES LT265/70R17E	RIMS AT 17X8.0	COLD 485 KPA (70 PSI) DUAL
THIS VEHICLE CONFORMS TO ALL APPLICABLE FEDERAL MOTOR VEHICLE SAFETY AND THEFT PREVENTION STANDARDS IN EFFECT ON THE DATE OF MANUFACTURE SHOWN ABOVE.			
VIN: XXXXXXXXXXXXXXXXX		TYPE: TRUCK	

Sample manufacturer's certification label for a passenger car⁵⁶

MFD BY: USA PASSENGER CAR CO., INC.		DATE OF MFD: 03/09
GVWR 4575 LB GVWR 2075 KG	GAWR F 2557 LB GAWR F 1160 KG	GAWR R 2061 LB GAWR R 935 KG
THIS VEHICLE CONFORMS TO ALL APPLICABLE FEDERAL MOTOR VEHICLE SAFETY, BUMPER, AND THEFT PREVENTION STANDARDS IN EFFECT ON THE DATE OF MANUFACTURE SHOWN ABOVE.		
VIN: XXXXXXXXXXXXXXXXX		TYPE: PASSENGER CAR

Associated passenger car tire placard

	TIRE AND LOADING INFORMATION	
SEATING CAPACITY : TOTAL 5 , FRONT 2 , REAR 3		
The combined weight of occupants and cargo should never exceed 385 kg or 850 lbs.		
TIRE	SIZE	COLD TIRE PRESSURE
FRONT	P225/50R17 93V	220KPA, 32PSI
REAR	P225/50R17 93V	220KPA, 32PSI
SPARE	T135/80D16 101M	420KPA, 60PSI
SEE OWNER'S MANUAL FOR ADDITIONAL INFORMATION		

⁵⁶ Note that tire information is omitted and is moved to the Tire Placard. See 49 CFR 571.110 paragraph S4.3

Appendix 7 – Certification Label Suppliers

NHTSA does not endorse any of the listed suppliers.

Name	Telephone	Internet
Vin-Eze/PMCS 2525 Honolulu Ave Montrose, CA 91020	888-247-7627	www.vineze.com
Dec-O-Art, Inc. 3914 Lexington Park Dr Elkhart, IN 46514	800-225-6879	www.dec-o-art.com
Cadillac Sign & Decal 4646 Poplar Level Rd Louisville, KY 40213	800-793-1618	www.cadillacsign.com
Meeks Printing Co. 222 N. Main Sikeston, MO 63801	800-455-0911	www.meeksprinting.com
Proven Graphics, Inc. 2914 Highway 2 East Kalispell, MT, 59901	800-477-7265	www.provengraphics.com

Appendix 8 – How to Search NHTSA’s Manufacturers’ Information Database

Please note that manufacturers often have assumed or fictitious business names, or in some countries such as China, province names are often part of the business names. Enter a name (using leading and trailing wildcards “%”) in the “Manufacturer Name” block and select the “Start Search” button. The system will provide returns that match the search term.

Sample Search for manufacturers’ names containing Acme

NHTSA
NATIONAL HIGHWAY TRAFFIC SAFETY ADMINISTRATION

Enter Email Address SUBSCRIBE
Sign up for Email Updates

SEARCH

DRIVING SAFETY | VEHICLE SAFETY | RESEARCH | DATA | LAWS & REGULATIONS | ABOUT NHTSA

MANUFACTURERS' INFORMATION DATABASE (MID)

([Search Instructions](#)) ([Search Tips](#))

Search In: Enter search information into any of the fields

Manufacturer Name

Plant Name for Retread

WMI

(565, WMI)

City

State

Zip Code

Product Type

DOT ID

Part 565;
 Part 566
 WMI
 Brake Hose
 Glazing
 Tires:
 New Tire
 Retread (Brake Hose, Glazing, New Tire, Retread)

[Go to the FTP page](#)

All of the tables above have been combined into one MS Access database; downloading Manufacturer.mdb or its zipped version Manufacturer.zip gets all of them. Files in this directory contain information regarding manufacturers. Files with the ".zip" extension can be downloaded and unzipped. Files with .mdb are in MS Access format.

Appendix 8 (Continued) - How to Search NHTSA's Manufacturers' Information Database

Sample Search Results Screen

Click on any section to see a specific type of search results. To see all search results for all sections, scroll down.

[565 Results](#)
[566 Results](#)
[WMI Results](#)
[Brake Hose Results](#)
[Glazing Results](#)
[Tires Results](#)


Part 565 Search Results (6 records)

Manufacturer Name	ACME CRYOGENICS, INC.
WMI	1A9/673
Address	PO BOX 445 ALLENTOWN, PA 18105
Product Type	TRAILER
Model	
Letter Date	07/20/2004
File Name	

Manufacturer Name	ACME GROUP LLC
WMI	1A9/816
Address	1507 S. LINCOLN AVE. LOVELAND, CO 80537
Product Type	TRAILER
Model	
Letter Date	07/08/2008
File Name	ORG4269

Appendix 8 (Continued) - How to Search NHTSA's Manufacturers' Information Database

To narrow the results, highlight and copy the manufacturer's name, then select the browser's "back" button to return to the main search page. Paste the manufacturer's name in the "Manufacturer Name" block and select the "Start Search" button.



NHTSA
NATIONAL HIGHWAY TRAFFIC
SAFETY ADMINISTRATION

Sign up for Email Updates

DRIVING SAFETY
VEHICLE SAFETY
RESEARCH
DATA
LAWS & REGULATIONS
ABOUT NHTSA

MANUFACTURERS' INFORMATION DATABASE (MID)

[\(Search Instructions\)](#)
[\(Search Tips\)](#)

Search In: Enter search information into any of the fields

	Manufacturer Name <input style="width: 90%;" type="text" value="ACME GROUP LLC"/>
	Plant Name for Retread <input style="width: 90%;" type="text"/>
<input checked="" type="checkbox"/> Part 565;	WMI <input style="width: 80%;" type="text"/>
<input checked="" type="checkbox"/> Part 566	(565, WMI)
<input checked="" type="checkbox"/> WMI	City <input style="width: 80%;" type="text"/>
<input checked="" type="checkbox"/> Brake Hose	State <input style="width: 80%;" type="text"/>
<input checked="" type="checkbox"/> Glazing	Zip Code <input style="width: 80%;" type="text"/>
<input checked="" type="checkbox"/> Tires:	Product Type <input style="width: 90%;" type="text"/>
<input checked="" type="radio"/> New Tire	DOT ID <input style="width: 80%;" type="text"/>
<input type="radio"/> Retread	(Brake Hose, Glazing, New Tire, Retread)

[Go to the FTP page](#)

All of the tables above have been combined into one MS Access database; downloading Manufacturer.mdb or its zipped version Manufacturer.zip gets all of them. Files in this directory contain information regarding manufacturers. Files with the ".zip" extension can be downloaded and unzipped. Files with .mdb are in MS Access format.

[Other NHTSA Sites](#)
[Safercar.gov](#)
[TrafficSafetyMarketing.gov](#)
[EMS.gov](#)
[911.gov](#)
[Distraction.gov](#)

Appendix 8 (Continued) - How to Search NHTSA's Manufacturers' Information Database

The system will provide returns that match the search term for Part 565 and Part 566 submissions to NHTSA, assigned WMI, and NHTSA assigned Brake Hose, Glazing, and Tires identification numbers or codes.

[565 Results](#)
[566 Results](#)
[WMI Results](#)
[Brake Hose Results](#)
[Glazing Results](#)
[Tires Results](#)

Part 565 Search Results

(1 records)

Manufacturer Name	ACME GROUP LLC
WMI	1A9/816
Address	1507 S. LINCOLN AVE. LOVELAND, CO 80537
Product Type	TRAILER
Model	
Letter Date	07/08/2008
File Name	ORG4269

Part 566 Search Results


(1 records)

Manufacturer Name	ACME GROUP LLC
Address	1507 S. LINCOLN AVE. LOVELAND, CO 80537
Inc St	CO
Product Type	TRAILER
GVWR Range	500 - 25000 LBS.
Date	08 Jul, 2008
File Name	ORG4269

Scroll down for more results, including any applicable WMI assignment, etc.

Appendix 8 (Continued) - How to Search NHTSA's Manufacturers' Information Database

If you have a VIN that is not immediately recognizable such as WUF*****, you may search for a manufacturer that assigned the VIN by entering the WMI in the "WMI" block and select the "Start Search" button.



NHTSA
NATIONAL HIGHWAY TRAFFIC
SAFETY ADMINISTRATION

SUBSCRIBE
Sign up for Email Updates

SEARCH

DRIVING SAFETY | VEHICLE SAFETY | RESEARCH | DATA | LAWS & REGULATIONS | ABOUT NHTSA

MANUFACTURERS' INFORMATION DATABASE (MID)

[\(Search Instructions\)](#)
[\(Search Tips\)](#)

Search In: Enter search information into any of the fields

<input checked="" type="checkbox"/> Part 565; <input checked="" type="checkbox"/> Part 566 <input checked="" type="checkbox"/> WMI <input checked="" type="checkbox"/> Brake Hose <input checked="" type="checkbox"/> Glazing <input checked="" type="checkbox"/> Tires: <input checked="" type="radio"/> New Tire <input type="radio"/> Retread (Brake Hose, Glazing, New Tire, Retread)	<table style="width: 100%; border-collapse: collapse;"> <tr> <td style="width: 50%;">Manufacturer Name</td> <td><input style="width: 100%;" type="text"/></td> </tr> <tr> <td>Plant Name for Retread</td> <td><input style="width: 100%;" type="text"/></td> </tr> <tr> <td>WMI</td> <td><input style="width: 100%;" type="text" value="WUF"/></td> </tr> <tr> <td>(565, WMI)</td> <td></td> </tr> <tr> <td>City</td> <td><input style="width: 100%;" type="text"/></td> </tr> <tr> <td>State</td> <td><input style="width: 100%;" type="text"/></td> </tr> <tr> <td>Zip Code</td> <td><input style="width: 100%;" type="text"/></td> </tr> <tr> <td>Product Type</td> <td><input style="width: 100%;" type="text"/></td> </tr> <tr> <td>DOT ID</td> <td><input style="width: 100%;" type="text"/></td> </tr> </table>	Manufacturer Name	<input style="width: 100%;" type="text"/>	Plant Name for Retread	<input style="width: 100%;" type="text"/>	WMI	<input style="width: 100%;" type="text" value="WUF"/>	(565, WMI)		City	<input style="width: 100%;" type="text"/>	State	<input style="width: 100%;" type="text"/>	Zip Code	<input style="width: 100%;" type="text"/>	Product Type	<input style="width: 100%;" type="text"/>	DOT ID	<input style="width: 100%;" type="text"/>
Manufacturer Name	<input style="width: 100%;" type="text"/>																		
Plant Name for Retread	<input style="width: 100%;" type="text"/>																		
WMI	<input style="width: 100%;" type="text" value="WUF"/>																		
(565, WMI)																			
City	<input style="width: 100%;" type="text"/>																		
State	<input style="width: 100%;" type="text"/>																		
Zip Code	<input style="width: 100%;" type="text"/>																		
Product Type	<input style="width: 100%;" type="text"/>																		
DOT ID	<input style="width: 100%;" type="text"/>																		

[Go to the FTP page](#)

All of the tables above have been combined into one MS Access database; downloading Manufacturer.mdb or its zipped version Manufacturer.zip gets all of them. Files in this directory contain information regarding manufacturers. Files with the ".zip" extension can be downloaded and unzipped. Files with .mdb are in MS Access format.

Appendix 8 (Continued) - How to Search NHTSA's Manufacturers' Information Database

For the WMI "WUF" the system returns the name and address for "Unsinn Fahrzeugtechnik GmbH". Again, highlight and copy the manufacturer's name, then select the browser's "back" button to return to the main search page. Delete the WUF from the WIM block, paste the manufacturer's name in the "Manufacturer Name" block, and select the "Start Search" button.

Part 566 Search Results

No applicable search terms entered.

WMI Search Results

(1 records)

Manufacturer Name	Unsinn Fahrzeugtechnik GmbH
WMI	WUF/
Address	Rainer Str 23 86684 Holzheim, Germany 86684 Germany
Product Type	Trailers
Date	

Brake Hose Search Results

No applicable terms entered.

Glazing Search Results

No applicable terms entered.

New Tire Search Results

No applicable terms entered.

[Other NHTSA Sites](#) [Safecar.gov](#) [TrafficSafetyMarketing.gov](#) [EMS.gov](#) [911.gov](#) [Distraction.gov](#)

[Web Policies & Notices](#) · [Terms of Use](#) · [FOIA](#) · [Privacy Policy](#) · [Accessibility](#) · [Careers](#) · [Site Map](#) · [Contact NHTSA](#) · [RSS](#)

1200 New Jersey Avenue, SE, West Building, Washington, DC 20590 1-888-327-4236 TTY:1-800-424-9153



Trusted sites | Protected Mode: Off

Appendix 8 (Continued) - How to Search NHTSA's Manufacturers' Information Database

The system will provide returns that match the search term for Part 565 and Part 566 submissions to NHTSA, assigned WMI, and NHTSA assigned Brake Hose, Glazing, and Tires identification numbers or codes. In our example, the manufacturer "Unsinn Fahrzeugtechnik GmbH" has not furnished NHTSA with Parts 565 or 566 submissions, a good indicator that the company does not intend for its trailers to be sold in the United States.

Click on any section to see a specific type of search results. To see all search results for all sections, scroll down.

565 Results

566 Results

WMI Results

Brake Hose Results

Glazing Results

Tires Results

Part 565 Search Results

(0 records)

No records found

Part 566 Search Results

(0 records)

No records found

WMI Search Results

(1 records)

Manufacturer Name	Unsinn Fahrzeugtechnik GmbH
WMI	WUF/
Address	Rainer Str 23 86684 Holzheim, Germany 86684 Germany
Product Type	Trailers
Date	

Brake Hose Search Results

(0 results)

No records found

Glazing Search Results

(0 records)

✓ Trusted sites | Protected M

Appendix 9 - FMVSS Applicability to Vehicle Type and Equipment Items

FMVSS No.	FMVSS Description	Passenger Car	Bus		MPV		Truck		School Bus		Trailer		Motorcycle	LSV	Equipment
			GVWR ≤ 4,536 kg	GVWR > 4,536 kg	GVWR ≤ 4,536 kg	GVWR > 4,536 kg	GVWR ≤ 4,536 kg	GVWR > 4,536 kg	GVWR ≤ 4,536 kg	GVWR > 4,536 kg	GVWR ≤ 4,536 kg	GVWR > 4,536 kg			
101	Controls and Displays	●	●	●	●	●	●	●	●	●					
102	Transmission shift lever sequence	●	●	●	●	●	●	●	●	●					
103	Windshield defrosting and defogging systems	●	●	●	●	●	●	●	●	●					
104	Windshield wiping and washing systems	●	●	●	●	●	●	●	●	●					
105	Hydraulic and electric brake systems	●	1	●	1	●	1	●	1	●					
106	Brake hoses	●	●	●	●	●	●	●	●	●	●	●	●		●
108	Lamps, reflective devices and associated equipment	●	●	●	●	●	●	●	●	●	●	●	●		●
109	New pneumatic and certain specialty tires	2	2		2		2		2		2				●
110	Tire selection & rims for vehicles with GVWR<4536 kg	●	●		●		●		●		●				●
111	Rearview mirrors	●	●	●	●	●	●	●	●	●			●		
113	Hood latch systems	●	●	●	●	●	●	●	●	●					
114	Theft protection	●	3		●		●		3						
116	Motor vehicle brake fluids	●	●	●	●	●	●	●	●	●	●	●	●		●
117	Retreaded pneumatic tires (for use on passenger cars)														●
118	Power-operated window, partition and roof panel systems	●			●		●								
119	New pneumatic tires for vehicles with GVWR>4536 kg & MC		4a	4	4a	4	4a	4	4a	4	4a	4	●		●
120	Tire selection & rims for vehicles with GVWR>4536 kg & MC			●		●		●		●		●	●		●
121	Air brake systems 5		●	●			●	●	●	●	●	●			
122	Motorcycle brake systems											●			

Appendix 9 (Continued) - FMVSS Applicability to Vehicle Type and Equipment Items

FMVSS Applicability		Passenger Car	Bus		MPV		Truck		School Bus		Trailer	Motorcycle	LSV	Equipment
FMVSS No.	FMVSS Description		GVWR ≤ 4,536 kg	GVWR > 4,536 kg	GVWR ≤ 4,536 kg	GVWR > 4,536 kg	GVWR ≤ 4,536 kg	GVWR > 4,536 kg	GVWR ≤ 4,536 kg	GVWR > 4,536 kg	GVWR ≤ 4,536 kg	GVWR > 4,536 kg		
123	Motorcycle controls and displays												•	
124	Accelerator control systems	•	•	•	•	•	•	•	•	•				
125	Warning devices													•
126	Electronic stability control systems	•	•		•		•		•					
129	New non-pneumatic tires for passenger cars	2												•
131	School bus pedestrian safety devices								6	6				
135	Light vehicle brake systems	•	7		7		7		7					
138	Tire pressure monitoring systems	•	8		8		8		8					
139	New pneumatic radial tires for light vehicles	2	2		2		2		2					•
201	Occupant protection in interior impact	•	9		•		•		9					
202a	Head restraints	•	•		•		•		10					
203	Impact protection for driver from steering control system	•	•		•		•		•					
204	Steering control rearward displacement	•	11		11		11		11					
205	Glazing materials	•	•	•	•	•	•	•	•	•		•	•	•
206	Door locks and door retention components	•			•	•	•	•						
207	Seating systems	•	•	•	•	•	•	•	•	•				
208	Occupant crash protection	•	•	•	•	•	•	•	•	•				
209	Seat belt assemblies													•

Appendix 9 (Continued) - FMVSS Applicability to Vehicle Type and Equipment Items

FMVSS Applicability		Passenger Car	Bus		MPV		Truck		School Bus		Trailer	Motorcycle	LSV	Equipment
FMVSS No.	FMVSS Description		GVWR ≤ 4,536 kg	GVWR > 4,536 kg	GVWR ≤ 4,536 kg	GVWR > 4,536 kg	GVWR ≤ 4,536 kg	GVWR > 4,536 kg	GVWR ≤ 4,536 kg	GVWR > 4,536 kg	GVWR ≤ 4,536 kg	GVWR > 4,536 kg		
210	Seat belt assembly anchorages	●	●	●	●	●	●	●	●	●				
212	Windshield mounting	●	●		●		●		●					
213	Child restraint systems	●	●	●	●	●	●	●	●	●				●
214	Side impact protection	12	12		12		12		12					
216	Roof crush resistance	●	13		13		13							
216a	Roof crush resistance (Upgraded Standard) 14	●	●		●		●		●					
217	Bus emergency exits and window retention and release		●	●					●	●				
218	Motorcycle helmets													●
219	Windshield zone intrusion	●	●		●		●		●					
220	School bus rollover protection								●	●				
221	School bus body joint strength								●	●				
222	School bus passenger seating and crash protection								●	●				
223	Rear impact guards													●
224	Rear impact protection										15			
225	Child restraint anchorage systems	●			16		16		●					
226	Ejection Mitigation	17	17		17		17		17					
301	Fuel system integrity	●	●		●		●		●	●				
302	Flammability of interior materials	●	●	●	●	●	●	●	●	●				
303	Fuel systems of compressed natural gas vehicles	●	●		●		●		●	●				
304	Compressed natural gas fuel system integrity													●

Appendix 9 (Continued)- FMVSS Applicability to Vehicle Type and Equipment Items

FMVSS Applicability		Passenger Car	Bus		MPV		Truck		School Bus		Trailer	Motorcycle	LSV	Equipment
FMVSS No.	FMVSS Description		GVWR ≤ 4,536 kg	GVWR > 4,536 kg	GVWR ≤ 4,536 kg	GVWR > 4,536 kg	GVWR ≤ 4,536 kg	GVWR > 4,536 kg	GVWR ≤ 4,536 kg	GVWR > 4,536 kg	GVWR ≤ 4,536 kg	GVWR > 4,536 kg		
305	Electric-powered vehicles; electrolyte spillage and shock protection	•	•		•		•		•					
401	Interior trunk release	18												
403	Platform lift systems for motor vehicles 19													•
404	Platform lift installations in motor vehicles 19	•	•	•	•	•	•	•	•	•	•			
500	Low-speed vehicles 20												•	21

Endnotes:

1	GVWR > 3,500 kg (7,716 pounds)
2	See FMVSS 110, S4.1
3	Applicable to a bus with an automatic transmission and a "park" position (brake transmission shift interlock) See FMVSS 114, S5.3
4	See FMVSS 120, S5.1.1
4a	New pneumatic light truck tires with a tread depth of 18/32 inch or greater, for use on motor vehicles with a GVWR of 4,536 kilograms (10,000 pounds) or less and bias ply light truck tires
5	Except certain vehicles -- See FMVSS 121 for list
6	Except multifunction school activity buses
7	GVWR < 3,500 kg (7,716 pounds)
8	Except vehicles with dual rear wheels
9	Upper head impacts (S6) limited to buses with GVWR ≤ 3,860 kg (8,509 pounds)
10	Driver's seat only
11	Unloaded vehicle weight < 2,495 kg (4,000 pounds)
12	For crash test, Bus, MPV, Truck GVWR < 2,722 kg (6,000 pounds); adv dummies & pole test phase-in begins 9/1/2010
13	GVWR < 2,722 kg (6,000 pounds); See FMVSS No. 216 for phase-out schedule
14	See FMVSS 216a for phase-in schedule
15	Certain trailer types are exempt
16	GVWR < 3,855 kg (8,500 pounds)
17	Except walk-in vans, modified roof vehicles, convertibles, or certain law enforcement vehicles, correctional institution vehicles, taxis and limousines. Phase-in began 9/1/2013
18	Passenger cars with a trunk, not a back door
19	Platform lifts designed to carry passengers into and out of a vehicle
20	GVWR < 1,361 kg (3,000 pounds); Max. Speed 40km/h (25mph); Min. Speed 32.2km/h (20 mph)
21	See list in S5(b) of FMVSS 500

Appendix 10 – Sample Tire Registration Form – Independent Distributors and Dealers

<h1>IMPORTANT</h1>																							
In case of a recall, we can reach you only if we have your name and address. You MUST send in this card to be on our recall list.																							
Do it today.				SHADED AREAS MUST BE FILLED IN BY SELLER																			
QTY				TIRE IDENTIFICATION NUMBERS																			
CUSTOMER'S NAME (Please Print)																							
CUSTOMER'S Address																							
CITY STATE ZIP CODE																							
NAME OF DEALER WHICH SOLD TIRE																							
DEALER'S ADDRESS																							
CITY STATE ZIP CODE																							