



22nd
ITS World Congress

Bordeaux, France

5 to 9 October
2015

Development of V2I Safety Applications

Carl Andersen
Federal Highway Administration, USDOT

SIS13: C-ITS for Traffic Accident Avoidance

TOWARDS INTELLIGENT MOBILITY
Better use of space

Organised by



Co-organised by



Hosted by



On behalf of



Supported by





22nd
ITS World Congress

Bordeaux, France

5 to 9 October
2015

Application Development

The **CAMP V2I Consortium** is developing three prototype safety applications for test and evaluation:

1. Red Light Violation Warning (RLVW)
2. Curve Speed Warning (CSW)
3. Reduced Speed/Work Zone Warning (RSZW)
 - a. Reduced Speed in Work and School Zone (RSZW-RS)
 - b. Reduced Speed in Work Zone with Lane Closure (RSZW-LC)

TOWARDS INTELLIGENT MOBILITY
Better use of space

Organised by



Co-organised by



Hosted by



On behalf of



Supported by





Application Algorithms



ALGORITHMS FOR EACH APPLICATION CONSIST OF:

Event Relevance

- Determine relevance of the upcoming event based on vehicle approach

Map Matching

- Conduct map matching based on:
 - MAP data from RSE
 - Vehicle positioning
 - Determination at road level
 - Determination at lane level if RTCM correction available

Warning Level Assessment

- Vehicle speed
- Posted speed
- Requirements for the event (e.g. Intersection, Curve, Work/School zone, etc.)
- Vehicle dynamics

Inform/Warning Generation

- Inform – “Inform” the driver of upcoming event (e.g. Curve, Work zone, etc.)
- Warnings – “Warning 1 (reduce speed) and Warning 2 (imminent reduce speed)”
- Generate appropriate Inform/Warning(s) for DVI



Application Development - RLVW



Event Relevance

- Use vehicle approach to evaluate relevance of upcoming intersection
- Select the closest relevant intersection

Map Matching

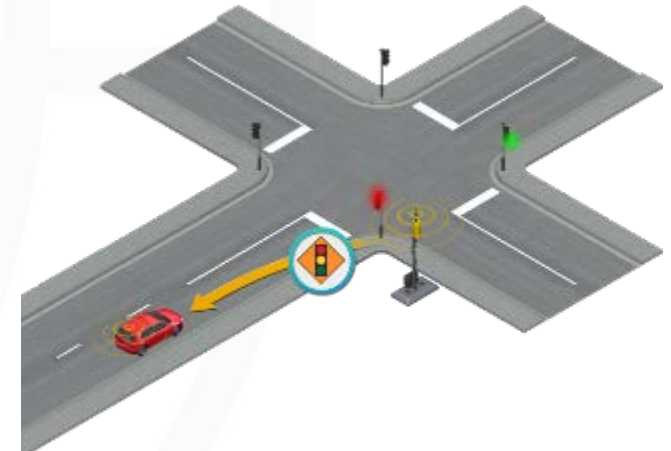
- MAP data from RSU
- Vehicle positioning
 - When available use RTCM correction
 - Turn prediction algorithm to predict driver intent

Warning Level Assessment

- Distance from the stop bar
- Vehicle speed, lane position, turn signal
- Time remaining for signal phase change

Inform/Warning Generation

- Inform: upcoming traffic signal
- Warning: Warn driver to reduce speed for stopping at the stop bar (if necessary)





Application Development – CSW



Event Relevance

- Evaluate relevance of upcoming curve
 - Determination of relevant curve for the direction of travel
 - Is vehicle approaching the curve or passing on an adjacent lane?

Map Matching

- Vehicle position with respect to curve approach road segment data points
 - Lane width
 - Reference position (start of curve)
 - Curve geometry

Warning Level Assessment

- Distance from start of curve
- Vehicle speed
- Curve geometry
- Road surface material/condition (asphalt, concrete, icy, wet, etc.)
- Relevant event on curve (stopped traffic, low visibility)

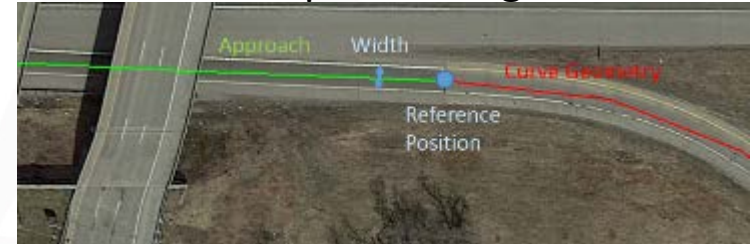
Inform/Warning Generation

- Inform: upcoming curve
- Warning 1: Reduce speed warning (if necessary)
- Warning 2: Imminent reduce speed warning (if necessary)

Establish Relevance



Map Matching



In the case of multiple upcoming curves, “informs and warnings” will be suppressed for the next curve while the vehicle is travelling through the preceding curve



Application Development – RSZW



Event Relevance

- Evaluate relevance of surrounding work/school zones
- Determine work zones based on vehicle approach

Map Matching

- Work/School zone map
- Determine vehicle position
 - Road level for Reduced Speed
 - Lane level for Lane Change

Warning Level Assessment

- For Reduced Speed
 - Vehicle speed
 - Distance from start of work/school zone
 - Speed limit in work zone / presence of workers
- For Lane Closure
 - Vehicle lane position
 - Lane closure
 - Vehicle speed
 - Distance to start of lane closure
 - Vehicle turn signal status

Inform/Warning Generation

- Inform: Presence of Work/School zone / Lane closure
- Warning: Reduce speed / Lane closure warning (if necessary)





Seven OEMs Building Test Vehicles



GM – Buick
LaCrosse



Subaru
Legacy

Honda –
Acura RLX



Volvo Truck
VNL 670S

Hyundai-Kia
K-900



VW / Audi
Audi A4

Nissan –
Infiniti M37



- All 7 vehicles will implement all 3 applications
- Two leaders – Hyundai-Kia and VW
- Five evaluators – GM, Honda, Nissan, Subaru and Volvo

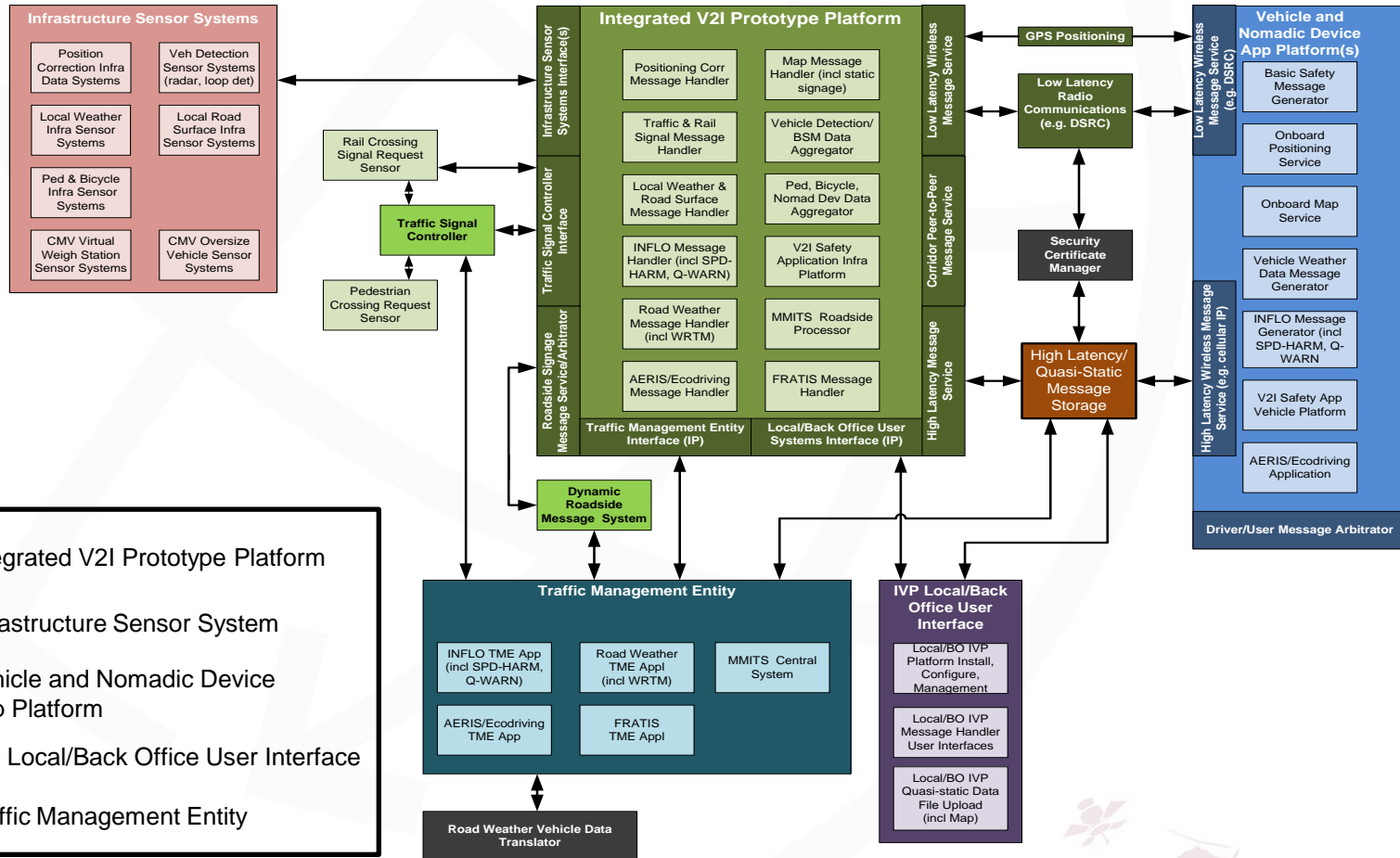
TOWARDS INTELLIGENT MOBILITY

Better use of space



Integrated V2I Prototype

Battelle
The Business of Innovation



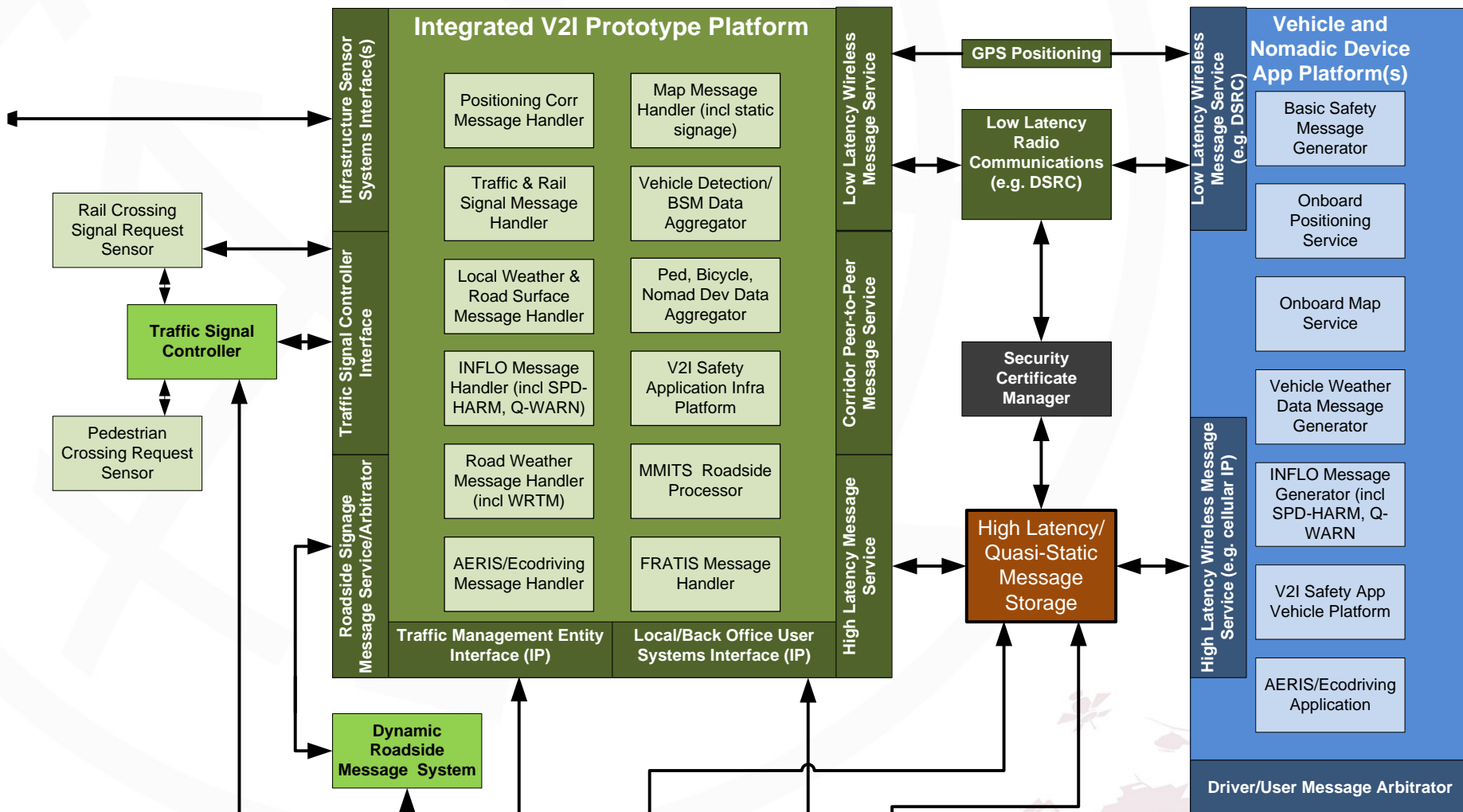
TOWARDS INTELLIGENT MOBILITY

Better use of space



Integrated V2I Prototype

Battelle
The Business of Innovation



TOWARDS INTELLIGENT MOBILITY

Better use of space



Example – IVP Support for RLVW



- RTCM/GPS position correction usage / support
 - RTCM v3.0
 - Broadcast at 1Hz, over-the-air format
 - Broadcast on Ch. 172
- SPaT + MAP support and interoperability testing
 - Broadcast on Ch, 172
 - MAP: 1Hz, SPaT: 10Hz (ASN.1 encoded per J2735:2015)
- SCMS security certificates for RSE & OBE
 - Long term, location independent certificates for testing



Objective Test Procedures



Purpose of Application:

- Based on the Concept of Operations
 - Overview of intended actions and timing

Data elements:

- Based on System Requirements
 - Are data flows appropriate and timely?
 - Are data correctly interpreted?

Action:

- Based on Performance Requirements
 - Does application provide appropriate inform/warning messages?



RLVW Testing & Evaluation

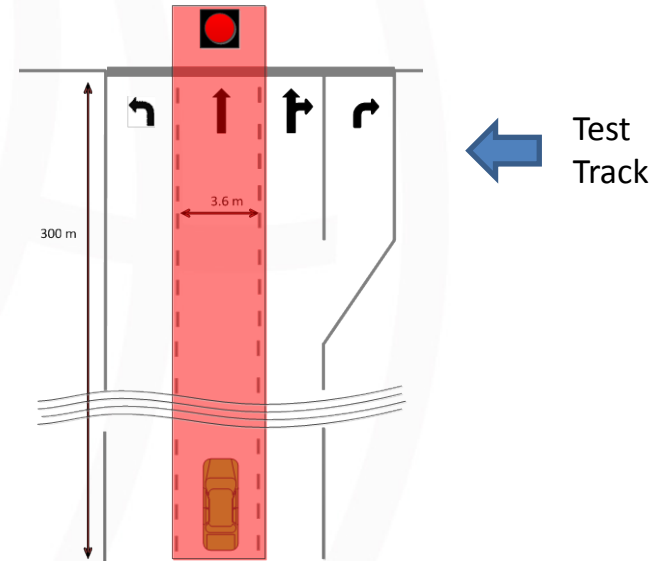


Application validation at test track

- Ensure reference application works, test scenarios are developed for:
 - Various speed profiles and maneuvers
 - Turn prediction

Real-world interoperability evaluation

- 1 Dedicated lane for right turn
- 1 Lane for straight across and right turn
- 1 Lane for straight across only
- Right turn on red permitted during specific hours of the day
- No direct left turns are permitted. Left turns require first to execute a right turn then a U – turn



Telegraph @
W. 12 Mile
Road





CSW Testing & Evaluation



Application validation at test track:

- Variable speed approaches
- Warning suppression entering a curve
- Warning suppression when passing a curve
- Variable friction
- Variable super elevation
- Low visibility event
- Stopped vehicle (obstacle) in curve event

Real-world interoperability evaluation

- Public road validation test

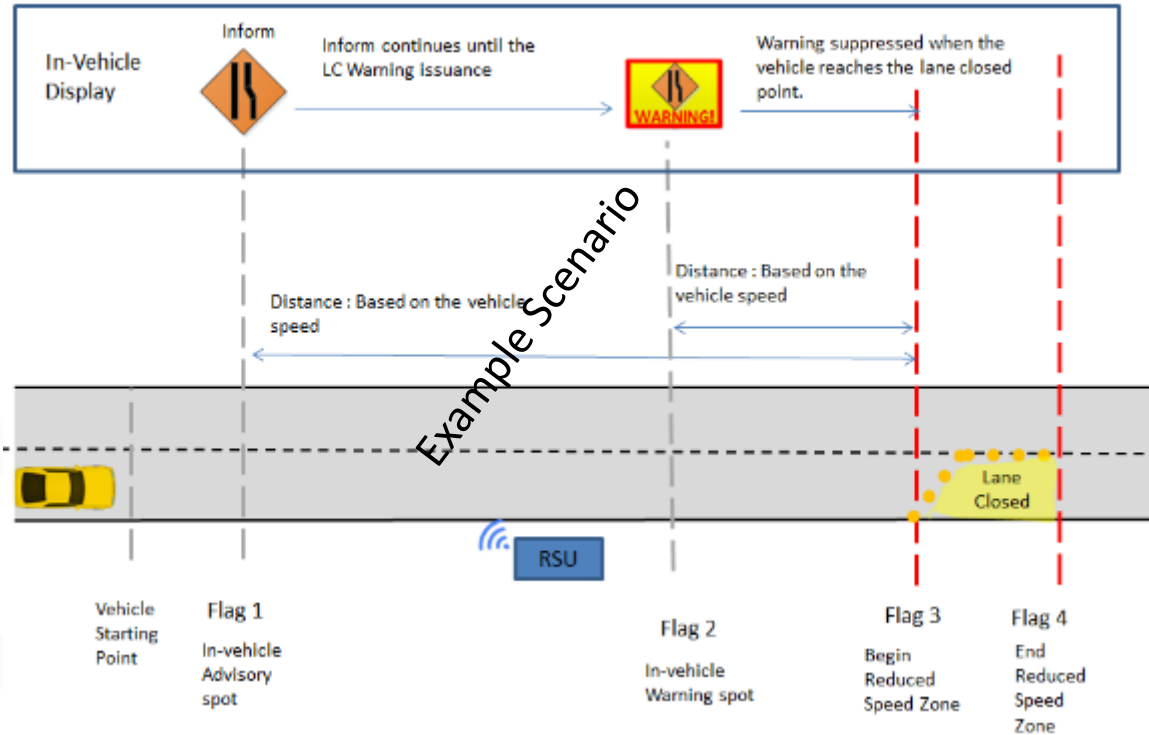




RSZW Testing & Evaluation



Validate time & location of the issuance and/or suppression of the application's "Inform" and "Warning" messages to the driver under various test conditions and approach speeds





V2I Safety Applications: Project Schedule



Objective: *“This project will develop and evaluate selected V2I Safety Applications”*

| Task | 2014 | | | | 2015 | | | | | | | | | | | | 2016 | | | | | Deliverables | Status | | | | | | | | |
|-------|---|-----|-----|-----|-------------------------|-----|-----|-----|---------------|-----|-----|-----|---------------------------|-----|-----|-----|------|--------------------------------------|---------|-----|-----|---|-----------|--|--|--|--|-------------|--|------------------------------|-------------|
| | Sep | Oct | Nov | Dec | Jan | Feb | Mar | Apr | May | Jun | Jul | Aug | Sep | Oct | Nov | Dec | Jan | Feb | Mar | Apr | May | | | | | | | | | | |
| 1 | Technical Project Management | | | | | | | | | | | | | | | | | Quarterly progress report & risk log | Ongoing | | | | | | | | | | | | |
| 2 | Coordination with Stakeholders | | | | | | | | | | | | | | | | | Report on meetings with stakeholders | Ongoing | | | | | | | | | | | | |
| 3 & 4 | Technical Assessment & Selection Criteria | | | | | | | | | | | | | | | | | | | | | Report on technical assessment and selection criteria | 4/21/2015 | | | | | | | | |
| 5 | | | | | App Dev Plan | | | | | | | | | | | | | | | | | | | | | Report on application development plan | 4/24/2015 | | | | |
| 6 | | | | | Application Development | | | | | | | | | | | | | | | | | | | | | Application system documentation | In progress | | | | |
| 7 | | | | | | | | | Vehicle Build | | | | | | | | | | | | | | | | | | | | | Vehicle system documentation | In progress |
| 8 | | | | | Infrastructure Build | | | | | | | | | | | | | | | | | | | | | Infrastructure system documentation | In progress | | | | |
| 9 | | | | | | | | | | | | | OTP Development & Testing | | | | | | | | | | | | | | OTP and test plan and final test report | In progress | | | |
| 10 | Map Generation | | | | | | | | | | | | | | | | | | | | | | | | | | Method to develop and validate intersection maps | Not started | | | |

Connected Vehicle Pilot Deployment Program

Spur Early CV Tech Deployment



Wirelessly Connected Vehicles

Measure Deployment Benefits



Safety

Resolve Deployment Issues



Technical



Mobile Devices



Mobility



Institutional



Infrastructure



Environment



Financial

TOWARDS INTELLIGENT MOBILITY

Better use of space