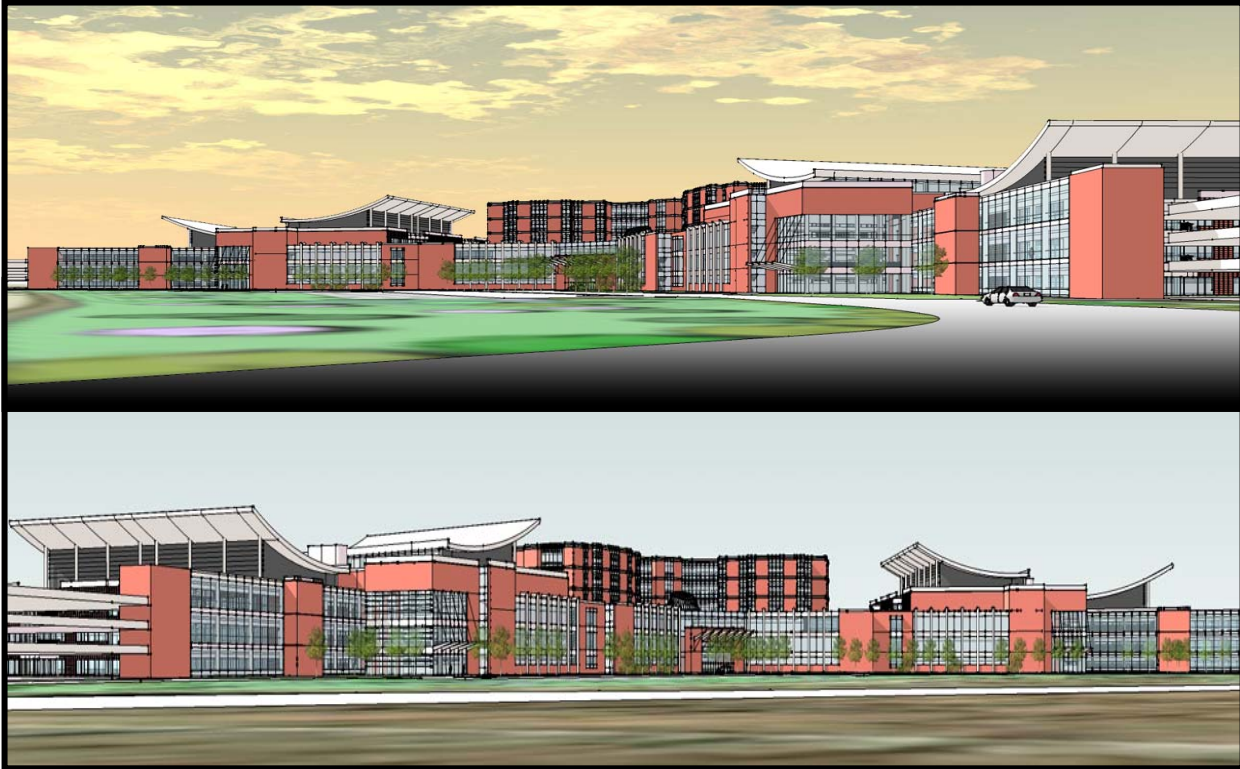


NEW COMMUNITY HOSPITAL AT FORT BELVOIR FACT SHEET



Fort Belvoir's new hospital will consist of a 120-bed, six-story main structure flanked on each side by two specialty care outpatient clinic areas. At far right and left of the clinics will be parking garages, complimenting the tiered parking provided at the front of the hospital.

The new hospital at Fort Belvoir will a premier military community hospital within the Department of Defense and part of an integrated health care system providing the highest quality healthcare to our Nation's Wounded Warriors, Active Duty, retirees and Family Members.

Providing the best healthcare to all of our beneficiaries remains our top priority as we transition to the new facility and move to an integrated healthcare delivery system.

The expanded outpatient specialty care brings the care closer to home and reduces the need to drive north.

Our inpatient services will expand threefold in volume and encompass a full spectrum of medical specialties, once more placing advanced care closer to our beneficiaries in Northern Virginia.

Some of the benefits are:

A: Facility

- All Benefits of Evidenced Based Design
- New Full Scope Community Hospital close to home
- Valet Parking for Select patient categories (i.e. Select Oncology, Ortho and OB patients)
- Better Parking
- New Cafeteria
- Improved/Advanced Medical Technology
- Patient/Family Education Classrooms
- Expanded Pharmacy – 12 Service Windows, Larger Waiting Room

B: Services

- Expanded Clinical Scope with 53 Primary and Specialty Care Services
- 120 Beds/ 10 ICU Beds/ 30 ER Exam Rooms/ 10 ORs/ 6 Endoscopy Suites
- Increased number of available Radiological Procedures and test
- Increased Specialty appointments in departments such as
 - Oncology (Chemotherapy and Radiation)
 - Cardiology (Cardiac Rehab, Diagnostic Cardiac Catherization)
 - Nuclear Medicine
 - Orthopedics
 - Rheumatology
 - Pulmonary
 - Ophthalmology
- Increased number and scope of Surgical procedures (Inpatient/Ambulatory)
 - Total Joint
 - Hip Replacements
 - Urological
 - Bronchoscopes
 - Oral Surgery
 - Ophthalmologic
 - Vascular
 - General Surgery
 - Virtual Colonoscopy
- Increased Access to Case Management
- Patient Family Centered Care
- Increased variety and number of Patient Educational Offerings
- Expanded Behavioral Health services – which includes a residential substance abuse treatment program and an inpatient behavior unit.

Projected Enrollment and Capacity for the New Fort Belvoir community hospital:

ELIGIBLE BENEFICIARY POPULATION:

South:	220,803
North:	218,882

Total: 439,886

Estimated Enrollment ~ 100-105,000 (DeWitt Health Care Network)

Retirees and their Family Members will continue make-up approximately 40% of the expanded healthcare system enrolled population with the new community hospital.

VISITS/CAPACITY:

We anticipate our overall outpatient workload to grow to over **571,000** visits per year in our primary, specialty and ancillary clinics.

Selected Specialty Clinics such as Cardiology, Medical Oncology, Pulmonary, Radiation Oncology and Urology alone will generate approximately 54,000 appointments.

Average Daily Inpatient Load:

Current DeWitt:	20
New facility:	92

CURRENT DEWITT:

Enrollment: enrolled population for Primary Care is 85,000

- 13% is AD
- 40% is AD Families
- 47% is retirees
-

New Hospital Estimate 101,000 no new enrollees from the network, growth from new BRAC AD and Families plus transfers from WRAMC

- 16% AD
- 40% FM
- 44% Retirees

New Services:

Adult Oncology Services (Cancer Care)

Adult Chemotherapy Infusion

Radiation Oncology/Linear Accelerators

Intensive Care Unit

Inpatient Behavioral Health

Inpatient Pediatric

Breast Center

Nuclear Medicine

Laser Eye Center

Dental Clinic Services/Oral Surgery

Aquatics Therapy

Chiropractic Services

Pain Clinic

Rheumatology

Vascular

Cardiac Catheter Lab

Neurology

Endocrinology

Pulmonary Clinic

Patient Resource Library

Infectious Disease Clinic

Interventional Radiology

Department of Veterans Affairs Health Clinic

Executive Medicine Clinic

Residential Substance Abuse Treatment Facility

Multidisciplinary Interventional Services

Enhanced Services:

Emergency Service

Dermatology

Ambulatory Surgery

Urology

Women's Health Center

Cardiology

ENT

Ophthalmology

Health Professions Education