



Regional Sediment Management Program

Nassau and Duval Counties, Florida RSM

Description

The Nassau & Duval Counties RSM effort is a continuation of FY12 efforts and an extension of the Duval & St. Johns RSM region shown in the Figure 1 inset. SAJ has collaborated with the Florida Department of Environmental Protection (FDEP), implementing actions to improve navigation and beach management in northeast Florida, most notably in St. Augustine Inlet, St. Johns County (included in FY12 Duval & St. Johns region). This FY13 proposal extends this collaboration to the next deep draft inlets to the north in an effort to take action given existing authorities, permitting, and funding possessed by all stakeholders. The region includes two deep draft harbors (Fernandina and Jacksonville), two deep draft Navy harbors (Kings Bay and Mayport), the Atlantic Intracoastal Waterway (AIWW), two Federal, and one local, hurricane and storm damage reduction projects.

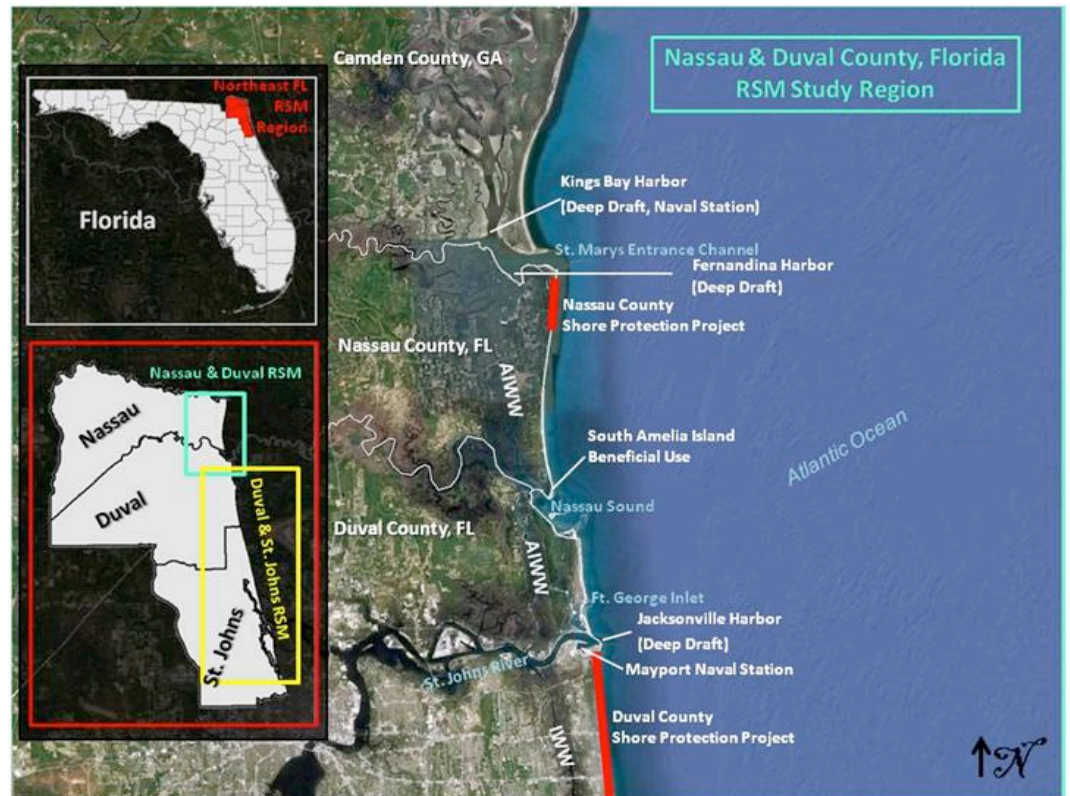


Figure 1: Nassau and Duval Counties study region.

Issue/Challenges

For Jacksonville Harbor, Corps Headquarters and President Obama have directed the acceleration of the schedule for deepening and widening to accommodate post-Panamax vessels. This carries the potential to significantly increase the volume of dredged material management needed for the harbor, thereby increasing opportunities for RSM. Nearshore placement is evolving as an economical placement option. Coordination and collaboration

with agencies on nearshore placement opportunities presents challenges with significant benefits if overcome.

Expected Products

RSM strategies for Nassau & Duval Counties Tech Note

calibrated/expanded CMS model

Meeting/workshop with Nassau/Duval stakeholders

Jacksonville Harbor tech note: beneficial use and O&M

Jacksonville Harbor RSM strategies tech note & pro-active QA/QC plan

Potential Industry/stakeholder workshop

Potential Users

USACE, Florida State Parks, Florida Department of Environmental Protection (FDEP), Florida Inland Navigation District (FIND), local navigation and HSDR sponsors, other stakeholders within study area.

Projected Benefits

The FY11 and FY12 St. Johns & Duval efforts facilitated dredging of 2 million cubic yards of sand from the Federal St. Augustine Inlet and placement on the Federal St. Johns Shore Protection Project. FY12 and 13 efforts will evaluate the performance of a beneficial beach placement south of Jacksonville Harbor. 400,000 cy of material will be dredged from Jacksonville Harbor for this effort. The potential to incorporate RSM in the expedited study to deepen and widen Jacksonville Harbor is a significant opportunity.

Points of Contact

Matthew Schrader, P.E. (USACE-SAD-SAJ-PD-PN) 904.232.2043

Leveraging Opportunities

RSM funds will be leveraged with current O&M funds and project funds.

Participating Partners

USACE-SAD-SAJ, FDEP, local sponsors, FIND, University of North Florida (UNF)