



### Description

The Nassau & Duval Counties RSM effort is a continuation of FY13 efforts and an extension of the Duval and St. Johns RSM region shown in the Figure 1 inset. SAJ has collaborated with the Florida Department of Environmental Protection (FDEP), implementing actions to improve navigation and beach management in northeast Florida, most notably in St. Augustine Inlet, St. Johns County (included in FY12 Duval & St. Johns region). This FY13 proposal extends this collaboration to the next deep draft inlets to the north in an effort to take action given existing authorities, permitting, and funding possessed by all stakeholders. The region includes two deep draft harbors (Fernandina and Jacksonville), two deep draft Navy harbors (Kings Bay and Mayport), the Atlantic Intracoastal Waterway (AIWW), two Federal, and one local, hurricane and storm damage reduction projects.

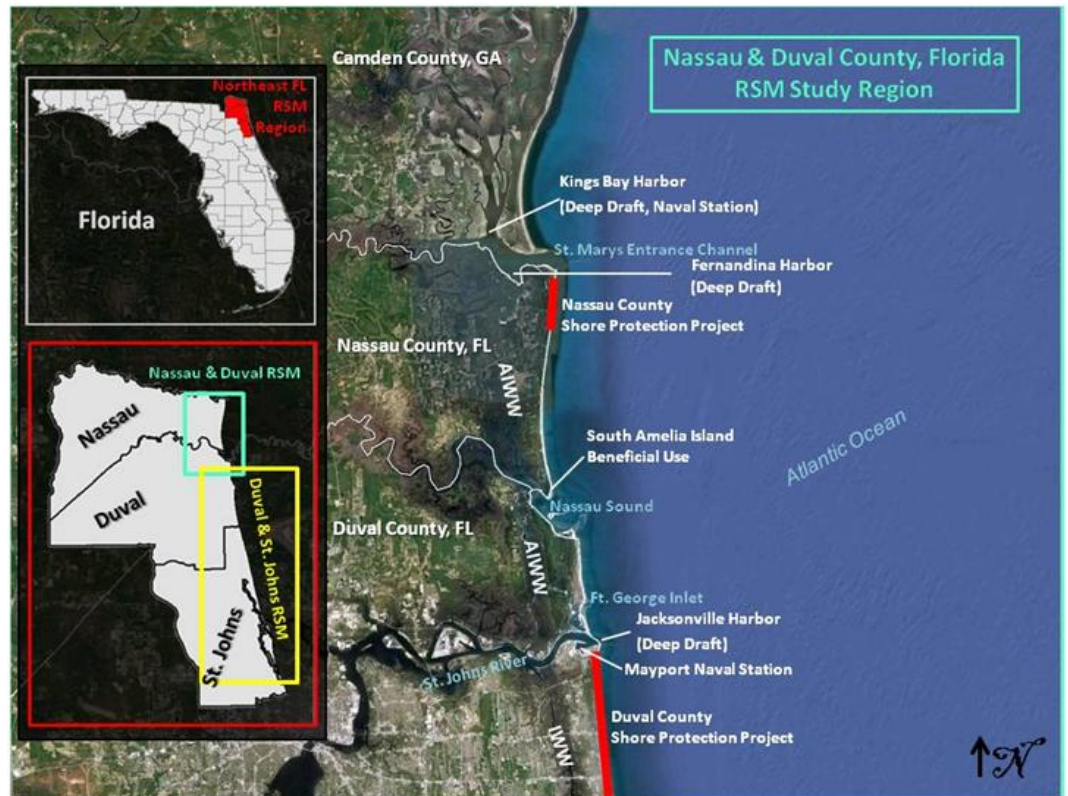


Figure 1: Nassau and Duval Counties study region.

### Issue/Challenges

FY14 efforts will focus on potential dredging of portions of Ft. George Inlet and use of beach quality dredged material on the Federal St. Johns County Shore Protection Project. For Jacksonville Harbor, Corps Headquarters and President Obama have directed the acceleration of the schedule for deepening and widening to accommodate post-Panamax vessels. This carries the potential to significantly

increase the volume of dredged material management needed for the harbor, thereby increasing opportunities for RSM. Nearshore placement is evolving as an economical placement option. Coordination and collaboration with agencies on nearshore placement opportunities presents challenges with significant benefits if overcome.

<b>Expected Products</b>	Optimized Ft. George dredging alternative based on CMS modeling  Addendum to FY13 Nassau & Duval Counties tech note focusing on Ft. George dredging alternative  Defined placement areas for Jacksonville Harbor O&M  Stakeholder meeting(s)
<b>Potential Users</b>	USACE, Florida State Parks, Florida Department of Environmental Protection (FDEP), Florida Inland Navigation District (FIND), local navigation and HSDR sponsors, other stakeholders within study area.
<b>Projected Benefits</b>	Potential cost savings to the St. Johns Co. SPP could result from use of dredged material from Ft. George Inlet. Dredging of the inlet is an issue of high priority for local environmental groups and the FDEP. Furthering nearshore berm research benefits projects within, and outside of, the region.
<b>Points of Contact</b>	Matthew Schrader, P.E. (USACE-SAD-SAJ-PD-PN) 904.232.2043
<b>Leveraging Opportunities</b>	RSM funds will be leveraged with current O&M funds and project funds.
<b>Participating Partners</b>	USACE-SAD-SAJ, FDEP, local sponsors, FIND, University of North Florida (UNF)