

# ATTERBURY-MUSCATATUCK 2016



Atterbury-Muscatatuck

§

Camp Atterbury

§

Muscatatuck Range

§

LTA Panther

§

Jefferson Range

§

Driving Directions

§

Surrounding Areas

§

General Information

§

Post Facilities

§

Garrison

# Atterbury-Muscatatuck

Atterbury-Muscatatuck enterprise is a State of Indiana and Department of Defense collaborative enterprise whose efforts are focused on creating and operating a highly realistic, fiscally responsible, contemporary training and developmental testing environment in which joint, interagency, intergovernmental, multi-national and non-governmental capabilities can prepare as a team for deployment in support of national requirements both in the homeland and overseas.

The enterprise is comprised of the Atterbury-Muscatatuck Center for Complex Operations (AMCCO), Camp Atterbury Maneuver Training Center, Muscatatuck Urban Training Center, a globally-recognized urban training range of Atterbury-Muscatatuck, designated as an Advanced Urban Training Facility, and Jefferson Proving Ground Air-Ground Range Complex.

Capability-specific venues have been established and enhanced across the facilities, and making use of existent restricted air space and Certificates of Authority, enable military, governmental and commercial entities to experience the most complete combination of interactive, live and virtual scenarios available in the country. Layered exercises allow for real-world interaction between participating organizations, leveraging assets and increasing efficiencies, thereby lowering costs.

## Atterbury-Muscatatuck Center for Complex Operations

AMCCO is a Military Department of Indiana activity tasked with the responsibility to guide the development and operation of the enterprise in support of the emerging national security requirements of the 21st Century. AMCCO operates as the strategic planning and business arm of the Atterbury-Muscatatuck enterprise

MG Omer C. Tooley was designated as the Senior Mission Commander of the enterprise. Contact information - (812) 526-1499 ex 62231 Office in building 4A.



## Camp Atterbury

Camp Atterbury is an enduring Army National Guard regional training facility located in central Indiana. Its mission is managed through garrison operations supported by the Installation Support Unit, Indiana National Guard.

Camp Atterbury commands, operates, manages and administers the use of resources as a Maneuver Training Center – Heavy, Power Support Platform (MTC-H (PSP) with a Regional Collective Training Capability (RCTC) to accomplish all assigned missions. It also serves as a multi-purpose Installation providing year-round customer service to transient units, tenant organizations and joint forces activities for two brigade size elements. It offers a full suite of ranges; maneuver training areas; facilities; and a joint simulation, training, and exercise complex to train for 21st Century warfare and home-land defense exercises.

At the close of fiscal year 2013, Atterbury transitioned from military-mobilization centric activity back to the enduring mission as an Army National Guard training center. Growth is anticipated in emerging core initiatives – homeland defense, unmanned aerial systems and cyber activities.

Headquarters located in Bldg 1, Headquarters Rd. (812) 526-1304



***Camp Atterbury is over 35,000 acres in size.  
Within its boundaries are:***

- Urban assault courses
- Engagement Skills Trainer
- Call For Fire Trainer (CFFT)
- Small Arms Live-fire shoot house
- Virtual Battle Space 2 (VBS2)
- Atterbury-Jefferson Air to Ground Range
- MRAP Virtual Vehicle Trainer (MRAP VVT)
- Virtual medical simulation training center
- Convoy live-fire range• Airfield operations
- MRAP Common Driver Training (MRAP CDT)
- Dismounted Soldier Training Simulator
- Vehicle Convoy Operations Trainer (VCOT)
- Reconfigurable Vehicle Tactical Trainer (RVTT)
- Joint Training Enterprise Network 2.0 (JTEN 2.0)
- Multiple small arms, sniper, and demo ranges
- Reception, staging and personnel processing (RSOI)
- Humvee and MRAP Egress Assistance Trainer (HEAT/MET)
- 25-acre Joint Simulations, Training and Exercise Center (JSTEC)

# CAMP ATTERBURY

## JOINT MANEUVER TRAINING CENTER

### Cantonment Map

#### Points of Interest

- ME** Main Entrance - Security Checkpoint
- JF** Maccabiah Center for Complex Operations
- HD** Headquarters Building
- JSTC** Joint Simulation Training Exercise Center (JSTEC)
- 157** 157th Training Support Brigade
- 206** 206th Training Support Brigade



Index map highlighting the location of the Cantonment Area with respect to the Camp Atterbury boundary.

#### Post Resources

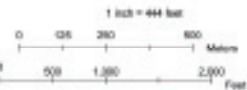
- PO** Post Office
- FA** Military Family Assistance Center
- PX** Post Exchange (PX)
- DS** Barber Shop/Laundry
- GY** Gymnasium
- CH** Chapel
- LI** Library
- US** USOEducation Center

#### Dining Facilities

- KH** King Hall, Atterbury Room
- DF** Dining Facility (DFAC)
- IM** Indiana Military Academy (130th RTD)
- AR** All Ranks Club

#### Legend

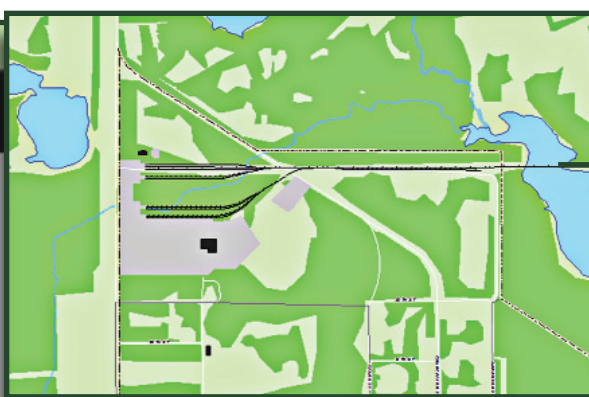
- Building
- Temp. Bldg./Trailer
- Parking Lot
- Road
- Fence
- Highway
- Forest
- Field
- Scrub Brush
- Water



The information presented on this map was compiled from a variety of source materials. The map is designed as a resource for the Military Department of Indiana and may not be used as an engineering drawing. The Military Department of Indiana makes no warranty or representation of accuracy concerning the accuracy of this information, nor should it be used as a legal or engineering document. All questions should be referred to the Military Department of Indiana, Master Planning Office, 310-522-2435.

Map Created: 2/14/2010 - Drafted by: S. Anderson - JPM/PL/Planning 30-Administrative (07/04A 21)

Vehicle Deployment Center  
& Rail Facility



## Muscatatuck Range

### MUTC

Located in Jennings County, South Central Indiana near North Vernon, the Muscatatuck Urban Training Complex is a secluded, self contained community, once home to the Muscatatuck State Developmental Center. In 2005 the 1,000 acre site was leased to the Army and licensed to the Indiana National Guard in order to create a much-needed urban training site.

### Training

Because of its unusual origins, Muscatatuck offers real buildings, real urban environment, and real training in a full-immersion contemporary urban training environment. . From the second participants drive onto the facility, they realize that this will be training unlike anything they've ever experienced.

### Facilities

Those utilizing MUTC have access to a 180 acre reservoir and urban infrastructure consisting of more than 100 training structures including a school, hospital, dormitories, light industrial structures, single family type dwellings, a dining facility and various administrative buildings. Additionally the training area includes an extensive underground utility tunnel system and more than nine miles of roads and streets.



## Muscatatuck Venues

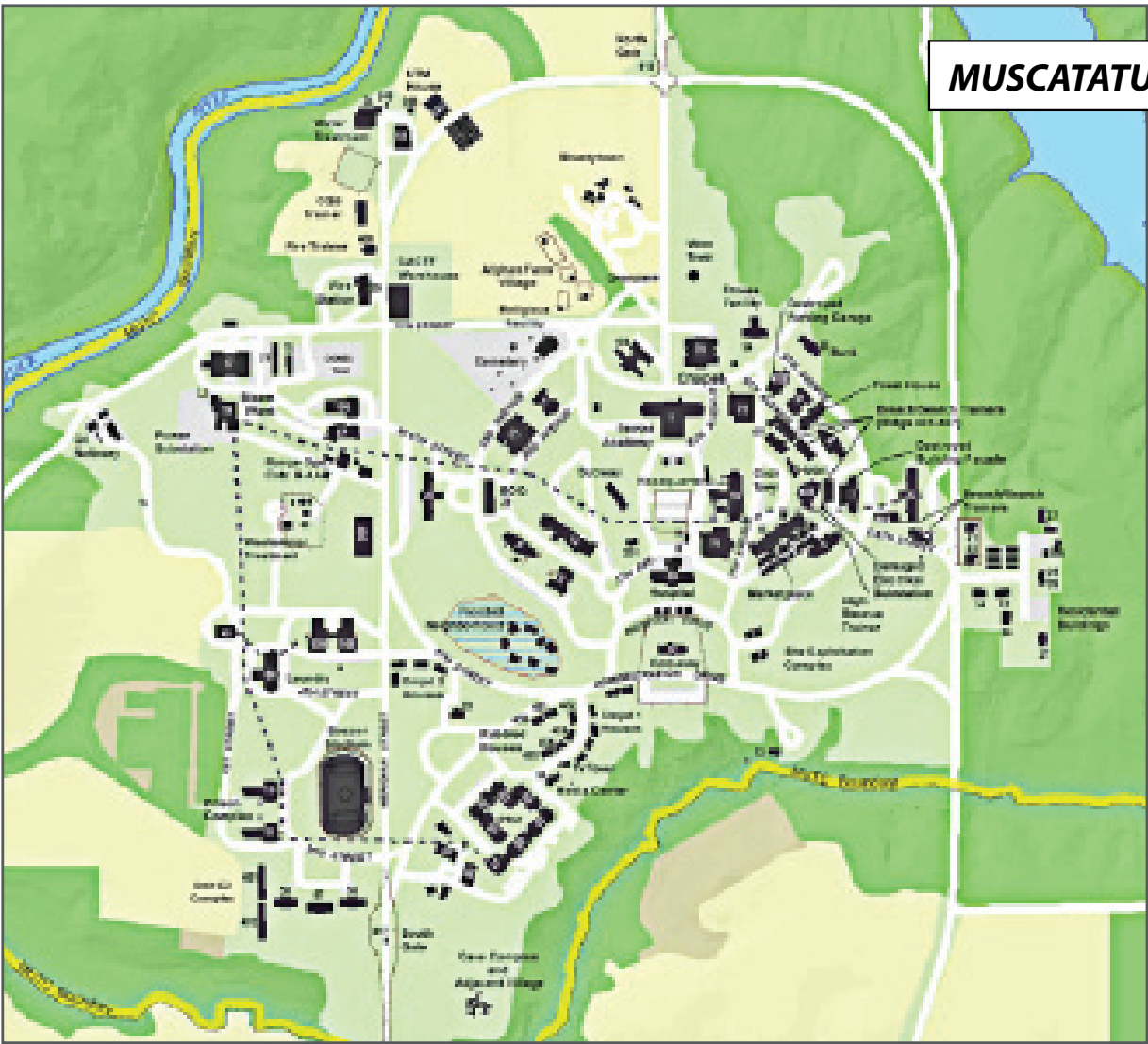


- Flooded community
- Derailed train venue
- Governor's residence
- Collapsed structures
- Searchable/Maneuverable and instrumented tunnels
- After Action Review Facility
- Confined space areas for emergency rescues
- Culture-specific farm
- Authentic marketplace
- Range Operations Center Communication
- Walled community
- Cyber capabilities
- Business zones
- Subway station
- Soccer stadium
- Religious center
- Walled-Embassy
- 5 Story Hospital
- Train & Rail yard
- Bus station
- Oil refinery
- Radio station
- Data outlets
- Cave system
- Cameras
- School

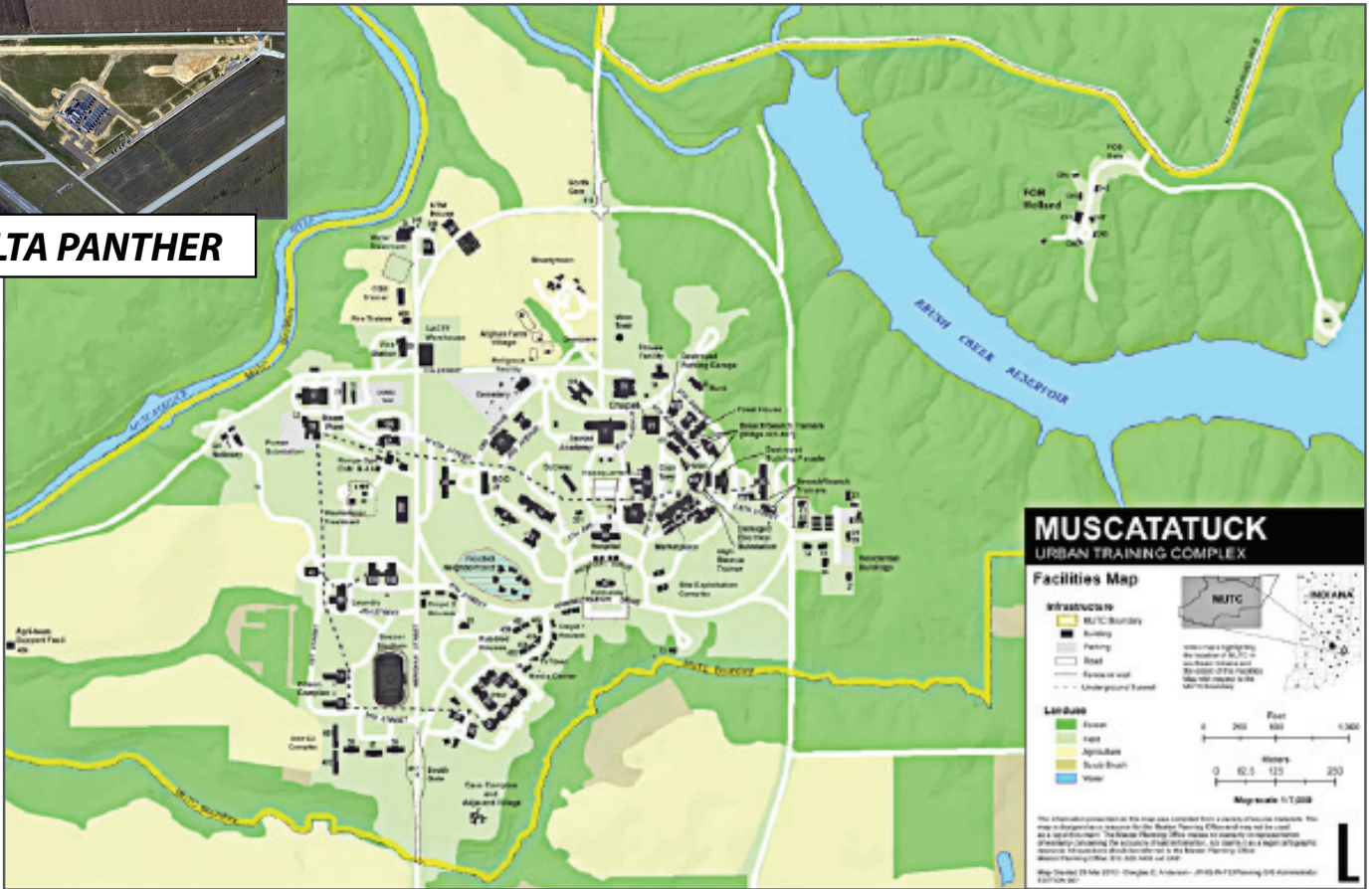
- 7 Story High rescue trainer
- Electromagnetic environment
- Courthouse/jail/prison complex
- Sound, scent, smoke generation
- Instrumentation Technology (Fiber optical cabling to zoned, electrical/ communication rooms)
- Power and data that distributes power
- Plus more



# MUSCATATUCK RANGE



**LTA PANTHER**



## MUSCATATUCK URBAN TRAINING COMPLEX

### Facilities Map

**Infrastructure**

- MUTC Boundary
- Building
- Parking
- Road
- Fence or wall
- Underground Tunnel

**Land Use**

- Forest
- Field
- Agriculture
- Built-Ups
- Water

Scale: Feet (0, 200, 400, 600) / Meters (0, 62.5, 125, 250)  
 Map Scale: 1:12,500

This information contained on this map was collected from a variety of sources. The user is responsible for verifying the accuracy of the information. The Indiana Planning Office makes no warranty or representation as to the accuracy of the information on this map. Planning Office  
 Map: Updated 21 May 2010; Original: C. Anderson, JPH 02/04/2009  
 10/10/2010



# LTA Panther

## Capabilities

- Two gated entrances are present with entry control measures in place
- 50 buildings capable of housing 1000 personnel, with heating and air conditioners
- Three shower facilities with 48 shower heads
- Dining facility with a seating capacity of 145 personnel, with five individual classrooms, cable television and internet drops
- Other dining options include a pizza shop, with free internet access
- Shopette that sells drinks, snacks and basic toiletries
- Small fitness center
- Pay as you go WIFI (30GB)
- Additional facilities include three conference/classrooms of varying sizes
- A double wide trailer, a triple wide trailer and a five-wide trailer containing, one large room and two smaller breakout rooms; Internet connections are available in each conference/classroom
- A Landing Zone(LZ) for helicopters is located within COB Panther and additional LZ's can be utilized with coordination with the
- North Vernon Airport
- Parking capacity on site is 100 vehicles



## Jefferson Range

The 55,265-acre Jefferson Proving Ground, established in 1940, was operated until 1995 when portions of it fell to closure processes.

Thereafter, memoranda of agreement were signed with The Army Test and Evaluation Command and the US Fish and Wildlife Service for management of 51,000 of those acres.

In 1998, an MOU ceded use of the Jefferson Range air-to-ground training area, a 1033-acre portion of the Proving Ground, to the Air National Guard.

Since that time the Jefferson Range has played a significant role in many aspects of Air and Army training, most recently UAS/UAV operator and equipment training. Because of restricted air space, COAs, and proximity to Muscatatuck Urban Training Center, Jefferson Range has become an important adjunct training and testing destination, including those exercises scheduled for military special operations units.

The overall profile is momentous to the UAS/UAV community because of the potential for launch and recovery, and for pursuit of payloads which require testing in air-to-ground-strikes.

Detailed information on the Range and the special use airspace availability can be found on the Atterbury-Muscatatuck Website under 'Capabilities - Special Use Airspace.'



### *The Jefferson Range offers:*

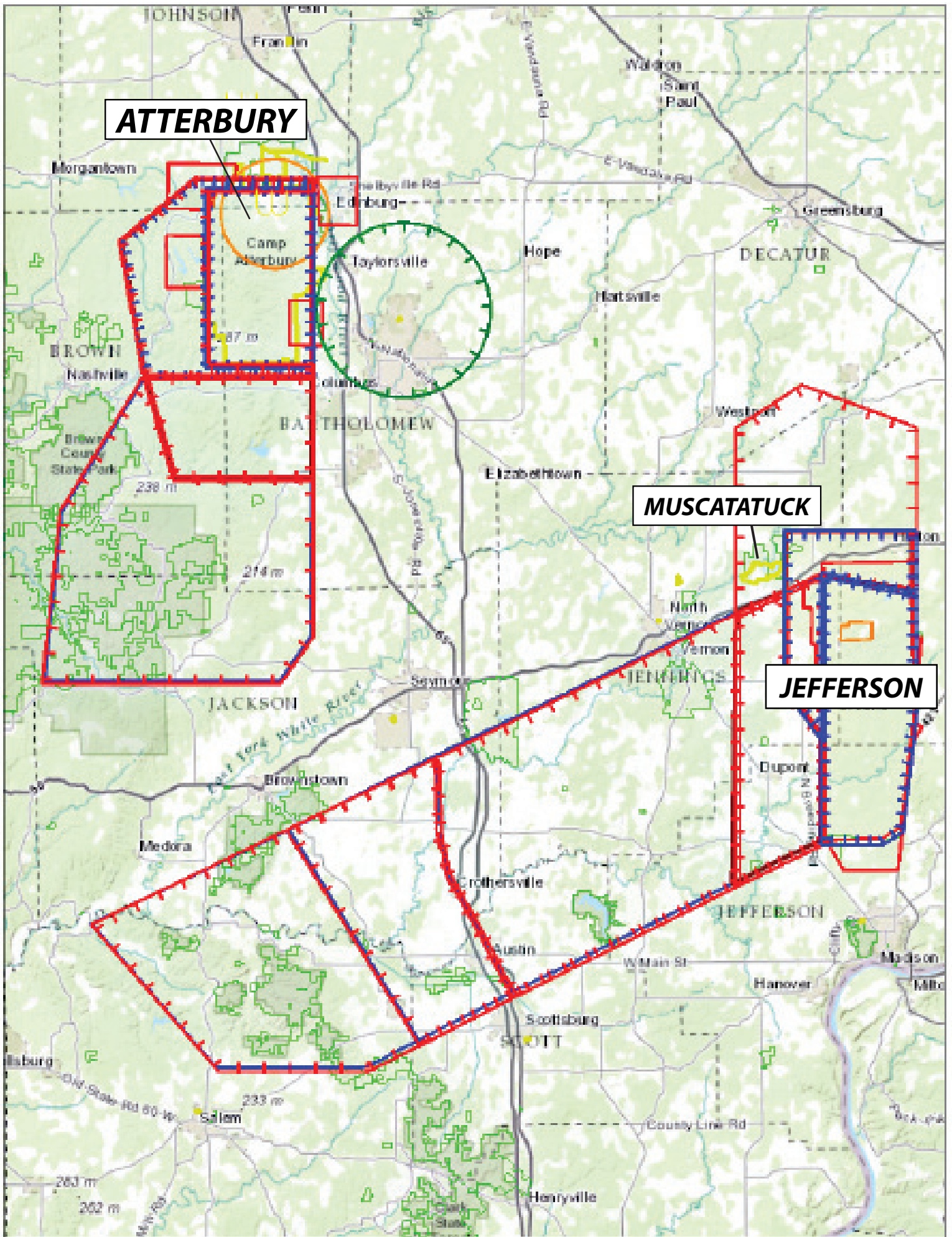
- Air-scored targets
- Strafe targets
- Rocket targets
- Laser capabilities
- Day and night operations for manned and unmanned activity
- Restricted airspace for unmanned flight training and testing

### **Range Office and Tower:**

**DSN: 873-5116**

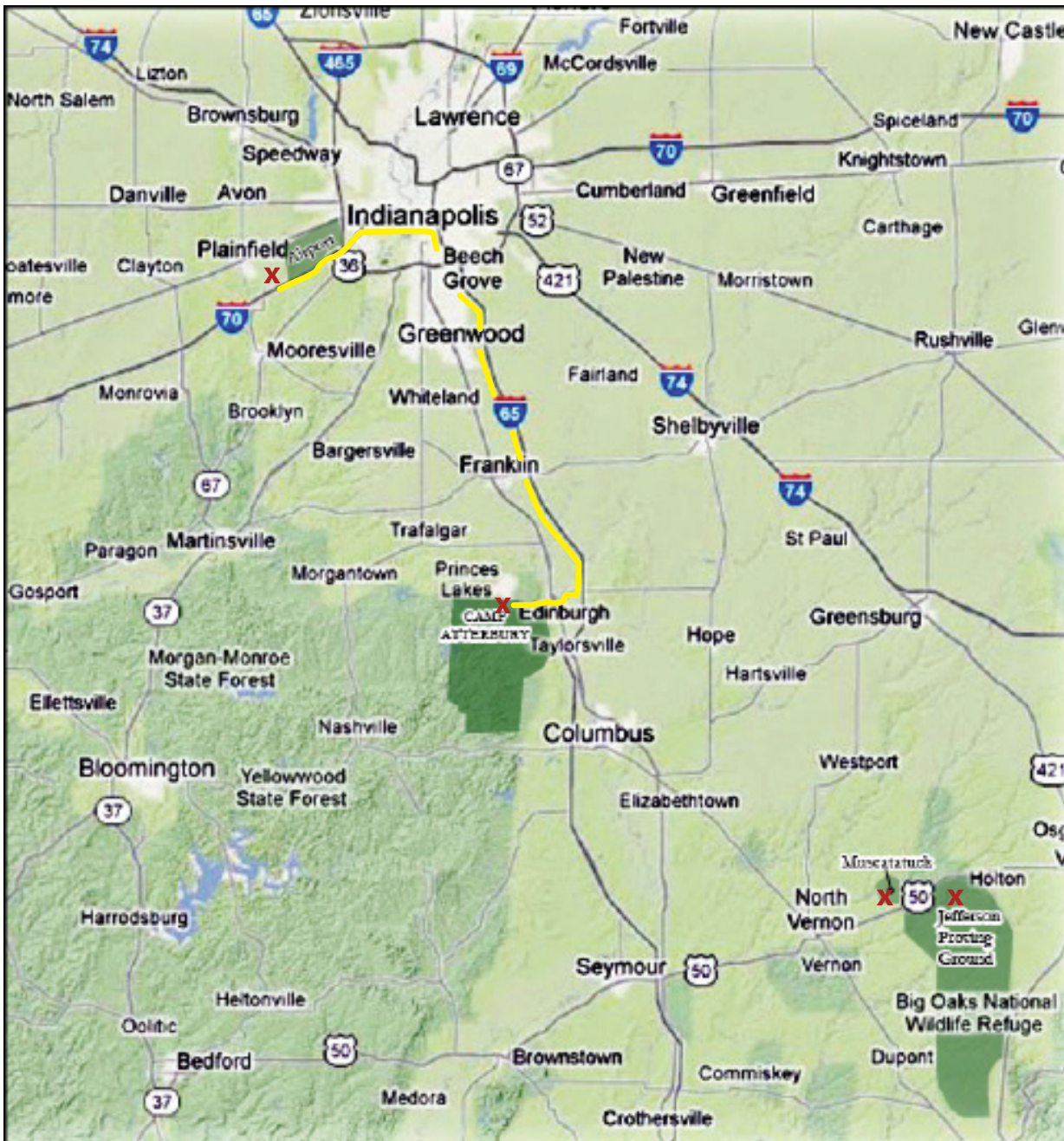
**Com: (812) 689-7295**

**Fax: (812) 689-3519**



## DIRECTIONS

- From airport terminal, head southwest on Col. H. Weir Cook Memorial Dr toward I-70 for 2 miles.
- Use left ramp for I-70 (East) toward Indianapolis and continue 11 miles on I-70.
- From I-70 East, exit I-65 (South) toward Louisville and continue 35 miles on I-65.
- From I-65 South, exit 76B on US 31.
- At third stop light turn left onto County Road 800 S/ Hospital Rd.
- Follow Hospital Road for 2 miles to Camp Atterbury Main Gate on left.
- Be prepared to show photo ID.



## DIRECTIONS

### *Driving Directions from CA to MUTC*

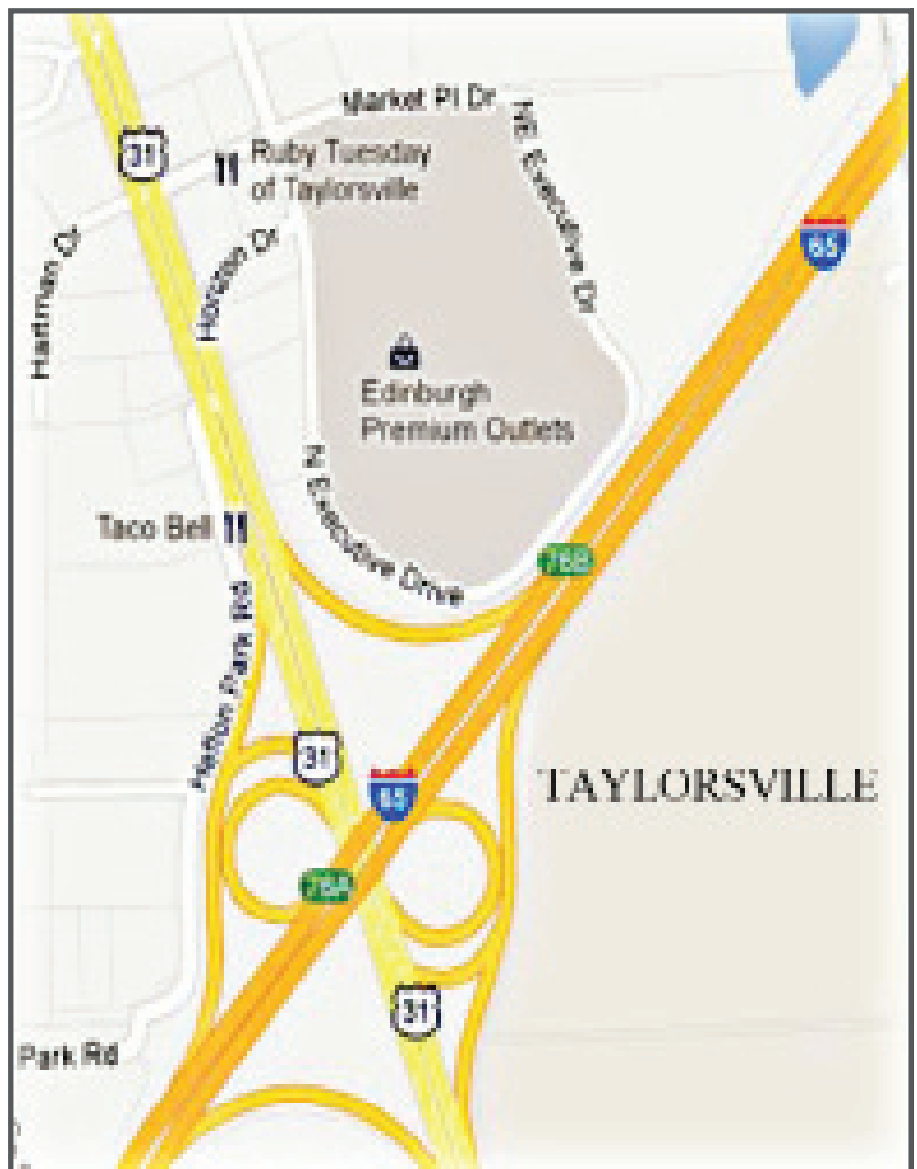
- Leave Camp Atterbury in the direction of US Hwy 31.
- Turn right at the light and continue on US 31 until you reach I65.
- Take I65 South. Stay on I65 exiting at 50A (Seymour/North Vernon).
- This will put you on Hwy 50 East.
- Stay on Hwy 50 East to North Vernon (about 12 miles).
- Hwy 50 will travel through the downtown area of North Vernon, crossing over Hwy 3 & 7. Stay on Hwy 50 East out of North Vernon for about 5 miles.
- There will be a sign for Muscatatuck and Purdue Southeast Agriculture Center, and a flashing light. A school will be to your right (Brush Creek Elementary).
- Turn left here crossing the RR tracks, and stay on this road to Muscatatuck (about 1 mile).



## SURROUNDING AREAS

Camp Atterbury is located between the two communities of Franklin, 13 miles north, and Columbus, 15 miles south; and adjacent to Nineveh, Edinburgh, and Taylorsville. All of these neighboring communities offer a variety of fast food options and family dining. Most of these communities offer lodging. Please browse the following websites or call their visitors centers for more information.

<a href="http://www.columbus.in.us">www.columbus.in.us</a>	800-468-6564
<a href="http://www.franklincoc.com">www.franklincoc.com</a>	317-736-6334
<a href="http://www.browncounty.com">www.browncounty.com</a>	800-753-3255



## GENERAL INFORMATION

### Main Numbers

Camp Atterbury (812) 526-1499  
Muscatatuck (812) 458-8780

### Military Police

(CA) Non-Emergency (812) 526-1234  
(CA) Emergency (812) 526-1109

### Security Information

Reflective gear is expected to be worn from dusk to dawn when walking or running on post.

### Computer Access

Personal Computers shall not be connected to Internet networks. Hardline internet access is provided in some housing.

### Wireless Devices

Portable Computing Devices and Wireless devices are not allowed in classified areas. These devices are not permitted to be connected to military computers at anytime.

### Vehicle Registration or Rental Agreement & Driver's License

Vehicle Registration and rental agreements (if applicable) should be present in vehicles at all times. Visitors driving on Atterbury-Muscatatuck should be licensed, with auto insurance. In the state of Indiana, the minimum liability coverage is \$25,000 per injured person up to \$50,000 per accident, and \$10,000 of property damage insurance.

[www.in.gov/bmv](http://www.in.gov/bmv)

### Driving on Post

Vehicle drivers will not use hand-held or hands-free communication devices such as cell phones, two-way radios or electronic devices such as personal data assistants while driving a vehicle. Vehicle drivers will operate these devices once the vehicle has been safely stopped and parked. This policy applies to all military and civilian personnel who operate a privately owned vehicle or government service administration vehicle on Camp Atterbury or Muscatatuck.

### Seatbelts

You and your passengers, including children ages 8 and up, must always wear seatbelts while the vehicle is in motion.

## POST FACILITIES

### **PX-AAFES**

Bldg 611 Gatling St  
Mon-Th: 0900-1900  
Friday: 0900-1700  
Sat-Sun: 1000-1700  
(812) 526-1140

### **Military Lodging**

Bldg 402 Clark St  
Mon-Sat: 0730 -1600  
(812) 526-1110

### **Troop Medical Center**

Bldg 2 Evans Rd  
Mon-Fri: 0700-1630  
(812) 526-1120

### **ID Card Section**

Bldg 343 Eggleston St  
Mon-Sat: 0800-1600  
(812) 526-1676/1849

### **USO**

Bldg 347 Fairbanks  
Mon-Fri: 0800-2200  
Sat: 0900-2200  
Sun: 0900-2100  
(812) 526-1499 x61492

### **ATMs**

Building 330,  
All Ranks Club - 24 Hours

### **Fitness Center**

Bldg 329  
Mon-Fri: 0600-1800  
Sat-Sun: 0900-1600  
(812) 526-1499 ext. 2309

### **Bank**

Bldg 502 Headquarters Rd.  
Mon & Wed: 0900-1630  
Friday: 0830-1630

### **Post Office**

Bldg: 647 Gatling St  
Mon, Tue, Fri: 0800-1530  
Wed & Thur: 0800-1600  
(812) 526-1111

### **Red Cross Office**

Bldg 127 - IOC  
(812) 526-1499 ext. 1310

### **Barbershop & Laundry**

Bldg: 242,428,645  
(812) 526-1163

### **Dining facilities**

Bldg 350 - When open  
Breakfast: 0530-0700  
Lunch: 1100-1300  
Dinner: 1700-1830

### **The House- All Ranks Club**

Bldg 330, 5th Street & Eggleston  
Sun-Thur: 0600-2200  
Fri-Sat: 0600-2300  
Delivery Daily: 1100-1900  
(812) 526-1143

### **Subway**

Bldg 646 Gatling St  
Mon-Fri: 0700-2100  
Sat: 0800-2100  
Sun: 0900-2100  
(812) 526-4162

## MUTC FACILITIES

### **Dining Facility**

Breakfast: 0600 - 0730  
Lunch: 1100 - 1300  
Dinner: 1700 - 1830  
**812-458-8780 ext. 1438**

### **Soldiers Pizza**

Mon-Sat: 1000-2100  
(812) 458-8780 ext.1715

### **Fitness Center**

#### **Bldg. 54**

Mon-Sat: 0500-2300  
(812) 458-8780 ext.41200





## GARRISON

***Air Field Operations Division***  
Himsel Airfield, Eggleston St.  
Mon-Fri: 0800-2300  
Sat-Sun: 0800-1600  
(812) 526-1355

***Directorate of Human Resources (DHR)***  
Bldg 332 Fairbanks St.  
(812) 526-1499 ext. 62954

***Directorate of Information Management (DOIM)***  
Bldg. 426 Headquarters Rd.  
(812) 526-1213



***Directorate of Logistics (DOL)***  
Bldg 3 Clarke St.  
(812) 526-1499 x62645

***Directorate of Public Work (DPW)***  
232 Eggleston St.  
(812) 526-1443

***Directorate of Resource Management (DRM)***  
Bldg 82 Fairbanks St.  
(812) 526-1499 ext. 2360

***Integrated Training Area Management (ITAM)***  
Bldg 4032  
812-526-1499 x61291

***Protocol Office***  
***Bldg 349***  
(812) 526-1276/1343

***Simulation Division***  
Mon-Fri: 0730-1630  
(812) 526-1403

***Public Affairs Office (PAO)***  
Welcome Center & Museum,  
Hospital Rd.  
(812) 526-1386

***Grizzly Operations***  
(317) 247-3300 ext 41777

***Range Control Division***  
Bldg 127, Eggleston St.  
(812) 526-1271

***Inspector General***  
(812) 526-1499 ext 62845

***State Resourced Programs***  
(812) 526-1295

***Atterbury Post Locator***  
(812) 526-1499

***Atterbury Headquarters***  
(812) 526-1304

***Muscatatuck (MUTC)***  
(812) 458-8780

***Regional Training Institute***  
Bldg. 5 (RTI)  
(812) 526-1498

