

ATTERBURY-MUSCATATUCK 2014



Atterbury-Muscatatuck

§

Camp Atterbury

§

Muscatatuck Range

§

LTA Panther

§

Jefferson Range

§

Driving Directions

§

Surrounding Areas

§

General Information

§

Post Facilities

§

Garrison

Atterbury-Muscatatuck

Atterbury-Muscatatuck enterprise is a State of Indiana and Department of Defense collaborative enterprise whose efforts are focused on creating and operating a highly realistic, fiscally responsible, contemporary training and developmental testing environment in which joint, interagency, intergovernmental, multi-national and non-governmental capabilities can prepare as a team for deployment in support of national requirements both in the homeland and overseas.

The enterprise is comprised of the Atterbury-Muscatatuck Center for Complex Operations (AMCCO), Camp Atterbury Maneuver Training Center, Muscatatuck Urban Training Center, a globally-recognized urban training range of Atterbury-Muscatatuck, designated as an Advanced Urban Training Facility, and Jefferson Proving Ground Air-Ground Range Complex.

Capability-specific venues have been established and enhanced across the facilities, and making use of existent restricted air space and Certificates of Authority, enable military, governmental and commercial entities to experience the most complete combination of interactive, live and virtual scenarios available in the country. Layered exercises allow for real-world interaction between participating organizations, leveraging assets and increasing efficiencies, thereby lowering costs.

Atterbury-Muscatatuck Center for Complex Operations

AMCCO is a Military Department of Indiana activity tasked with the responsibility to guide the development and operation of the enterprise in support of the emerging national security requirements of the 21st Century. AMCCO operates as the strategic planning and business arm of the Atterbury-Muscatatuck enterprise

MG Omer C. Tooley was designated as the Senior Mission Commander of the enterprise. Contact information - (812) 526-1499 ex 62231 Office in building 4A.



Camp Atterbury

Camp Atterbury is an enduring Army National Guard regional training facility located in central Indiana. Its mission is managed through garrison operations supported by the Installation Support Unit, Indiana National Guard.

Camp Atterbury commands, operates, manages and administers the use of resources as a Maneuver Training Center – Heavy, Power Support Platform (MTC-H (PSP) with a Regional Collective Training Capability (RCTC) to accomplish all assigned missions. It also serves as a multi-purpose Installation providing year-round customer service to transient units, tenant organizations and joint forces activities for two brigade size elements. It offers a full suite of ranges; maneuver training areas; facilities; and a joint simulation, training, and exercise complex to train for 21st Century warfare and home-land defense exercises.

At the close of fiscal year 2013, Atterbury transitioned from military-mobilization centric activity back to the enduring mission as an Army National Guard training center. Growth is anticipated in emerging core initiatives – homeland defense, unmanned aerial systems and cyber activities.

Headquarters located in Bldg 1, Headquarters Rd. (812) 526-1304



***Camp Atterbury is over 35,000 acres in size.
Within its boundaries are:***

- IED defeat lane
- Urban assault courses
- IED Battle Drill Simulator
- Engagement Skills Trainer
- Call For Fire Trainer (CFFT)
- Small Arms Live-fire shoot house
- Virtual Battle Space 2 (VBS2)
- Atterbury-Jefferson Air to Ground Range
- MRAP Virtual Vehicle Trainer (MRAP VVT)
- Virtual medical simulation training center
- Convoy live-fire range
- Airfield operations
- MRAP Common Driver Training (MRAP CDT)
- Dismounted Soldier Training Simulator
- Vehicle Convoy Operations Trainer (VCOT)
- Reconfigurable Vehicle Tactical Trainer (RVTT)
- Joint Training Enterprise Network 2.0 (JTEN 2.0)
- Reconfigurable Vehicle Tactical Trainer (RVTT)
- Multiple small arms, sniper, and demo ranges
- Reception, staging and personnel processing (RSOI)
- Humvee and MRAP Egress Assistance Trainer (HEAT/MET)
- 25-acre Joint Simulations, Training and Exercise Center (JSTEC)

CAMP ATTERBURY

JOINT MANEUVER TRAINING CENTER

Cantonment Map

Points of Interest

- ME** Main Entrance - Security Checkpoint
- JF** Massachusetts Center for Complex Operations
- HQ** Headquarters Building
- JS** Joint Simulation Training Exercise Center (JSTEC)
- 157** 157th Training Support Brigade
- 205** 205th Training Support Brigade



Inset map highlighting the location of the Cantonment Area with respect to the Camp Atterbury boundary

Post Resources

- PO** Post Office
- FA** Military Family Assistance Center
- PX** Post Exchange (PX)
- BS** Barber Shop/Laundry
- GY** Gymnasium
- CH** Chapel
- LI** Library
- US** USO/Education Center

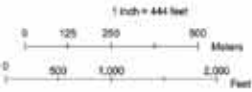
Dining Facilities

- KH** King Hall, Atterbury Room
- DF** Dining Facility (DFAC)
- IM** Indiana Military Academy (133th RTI)
- AR** All Ranks Club

Legend

- Building
- Temp. Bldg./Trailer
- Parking Lot
- Road
- Fence
- Hillpad
- Forest
- Field
- Scrub Brush
- Water

Vehicle Deployment Center & Rail Facility



The information presented on this map was compiled from a variety of source materials. The map is designed as a reference for the Military Department of Indiana and may not be used as a legal document. The Military Department of Indiana makes no warranty or representation of warranty concerning the accuracy of said information, nor claims it as a legal cartographic resource. All questions should be referred to the Military Department of Indiana, Master Planning Office, 913-238-1481.

Map Created 28 Aug 2011 - Douglas E. Anderson - JFHQ/JV/Planning SIG-A/Assistant Director (P)



Muscatatuck Range

MUTC

Located in Jennings County, South Central Indiana near North Vernon, the Muscatatuck Urban Training Complex is a secluded, self contained community, once home to the Muscatatuck State Developmental Center. In 2005 the 1,000 acre site was leased to the Army and licensed to the Indiana National Guard in order to create a much-needed urban training site.

Training

Because of its unusual origins, Muscatatuck offers real buildings, real urban environment, and real training in a full-immersion contemporary urban training environment. . From the second participants drive onto the facility, they realize that this will be training unlike anything they've ever experienced.

Facilities

Those utilizing MUTC have access to a 180 acre reservoir and urban infrastructure consisting of more than 100 training structures including a school, hospital, dormitories, light industrial structures, single family type dwellings, a dining facility and various administrative buildings. Additionally the training area includes an extensive underground utility tunnel system and more than nine miles of roads and streets.



Muscatatuck Venues

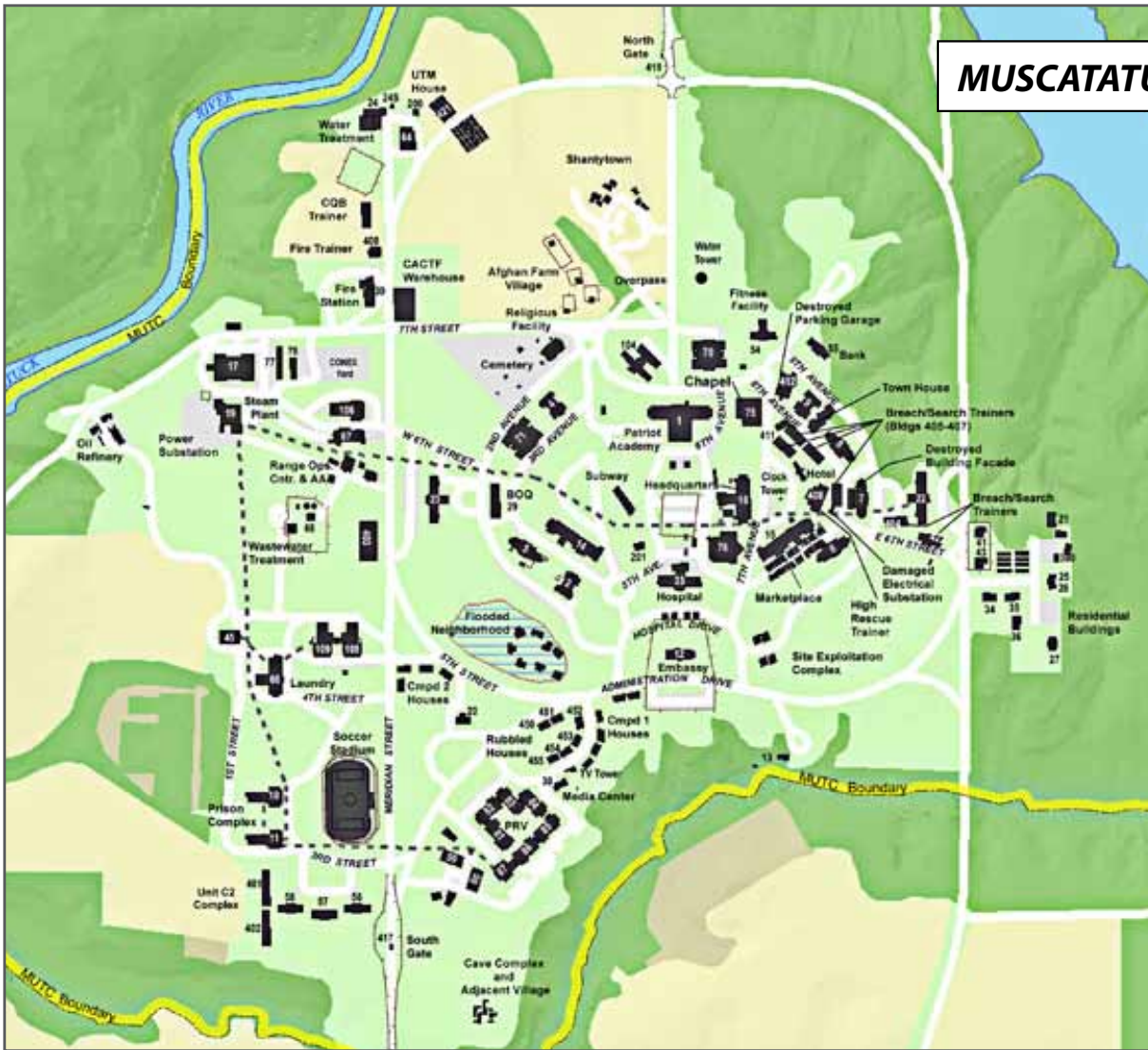


- Flooded community
- Derailed train venue
- Governor's residence
- Collapsed structures
- Searchable/Maneuverable and instrumented tunnels
- After Action Review Facility
- Confined space areas for emergency rescues
- Culture-specific farm
- Authentic marketplace
- Range Operations Center Communication
- Walled community
- Cyber capabilities
- Business zones
- Subway station
- Soccer stadium
- Religious center
- Walled-Embassy
- 5 Story Hospital
- Train & Rail yard
- Bus station
- Oil refinery
- Radio station
- Data outlets
- Cave system
- Cameras
- School

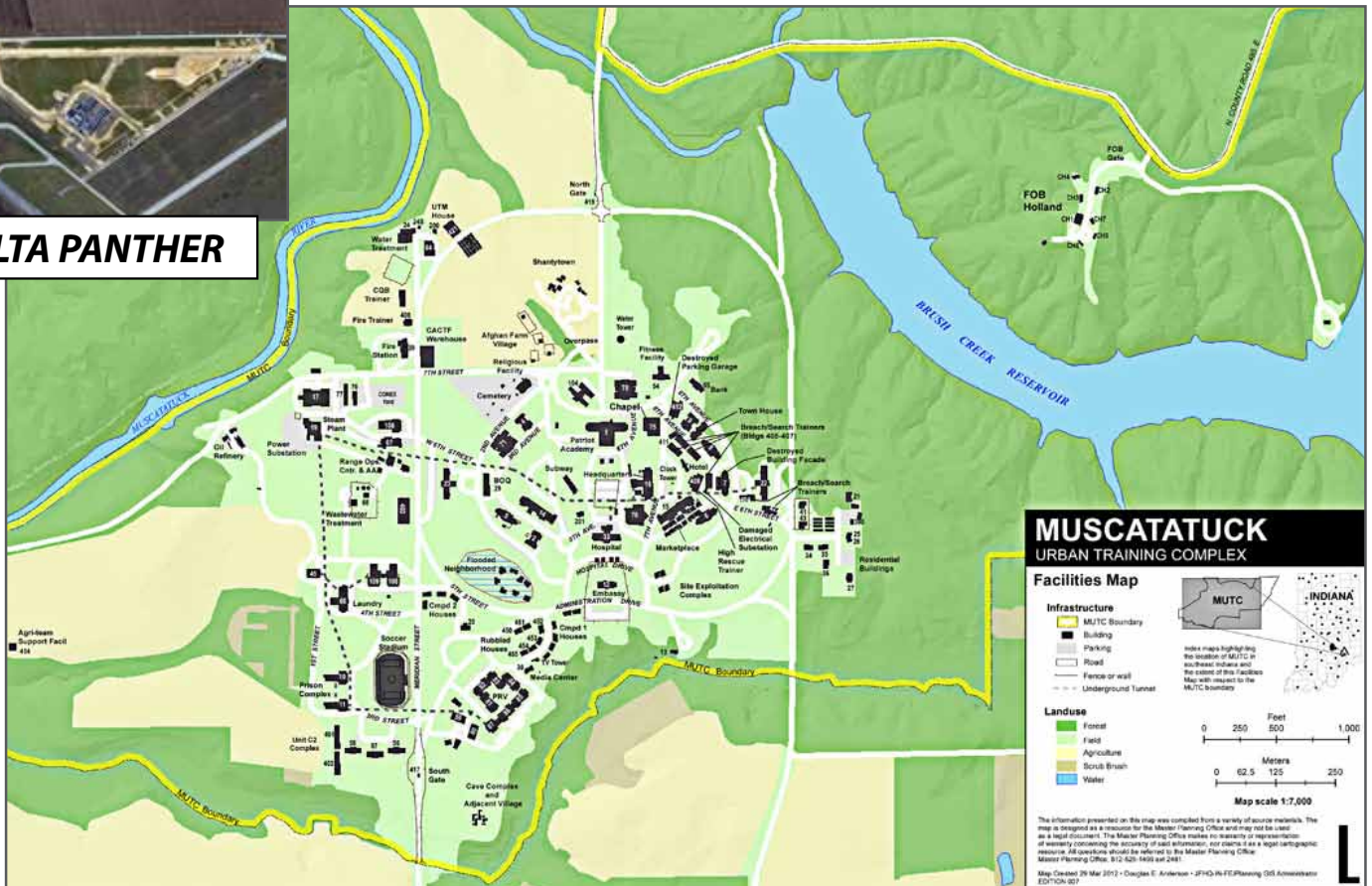


- 7 Story High rescue trainer
- Electromagnetic environment
- Courthouse/jail/prison complex
- Sound, scent, smoke generation
- Instrumentation Technology (Fiber optical cabling to zoned, electrical/ communication rooms)
- Power and data that distributes power
- Plus more

MUSCATATUCK RANGE



LTA PANTHER



MUSCATATUCK
URBAN TRAINING COMPLEX

Facilities Map

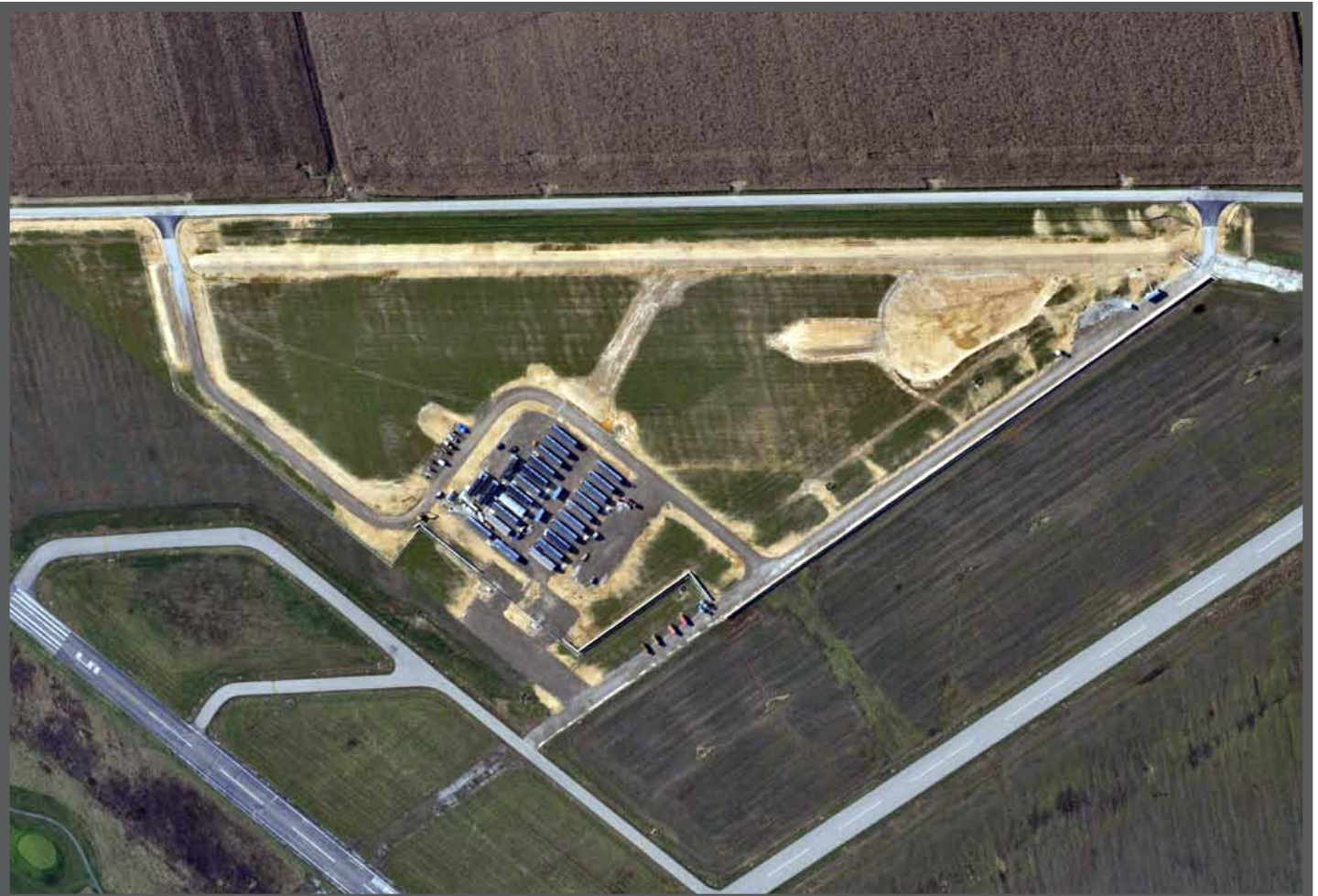
The information presented on this map was compiled from a variety of source materials. The map is intended as a resource for the Master Planning Office and may not be used as a legal document. The Master Planning Office makes no warranty or representation of accuracy concerning the accuracy of the information. For more information, please contact the Master Planning Office, 812 S. 14th St., 46701.

Map Created: 29 Mar 2012 | Designer: C. Anderson | JPHD-PLTE/Planning GIS Administrator | ED/100-001

LTA Panther

Capabilities

- Two gated entrances are present with entry control measures in place
- 50 buildings capable of housing 1000 personnel, with heating and air conditioners
- Three shower facilities with 48 shower heads
- Dining facility with a seating capacity of 145 personnel, with five individual classrooms, cable television and internet drops
- Other dining options include a pizza shop, with free internet access
- Shopette that sells drinks, snacks and basic toiletries
- Small fitness center
- Pay as you go WIFI (30GB)
- Additional facilities include three conference/classrooms of varying sizes
- A double wide trailer, a triple wide trailer and a five-wide trailer containing, one large room and two smaller breakout rooms; Internet connections are available in each conference/classroom
- A Landing Zone(LZ) for helicopters is located within COB Panther and additional LZ's can be utilized with coordination with the
- North Vernon Airport
- Parking capacity on site is 100 vehicles



Jefferson Range

The 55,265-acre Jefferson Proving Ground, established in 1940, was operated until 1995 when portions of it fell to closure processes.

Thereafter, memoranda of agreement were signed with The Army Test and Evaluation Command and the US Fish and Wildlife Service for management of 51,000 of those acres.

In 1998, an MOU ceded use of the Jefferson Range air-to-ground training area, a 1033-acre portion of the Proving Ground, to the Air National Guard.

Since that time the Jefferson Range has played a significant role in many aspects of Air and Army training, most recently UAS/UAV operator and equipment training. Because of restricted air space, COAs, and proximity to Muscatatuck Urban Training Center, Jefferson Range has become an important adjunct training and testing destination, including those exercises scheduled for military special operations units.

The overall profile is momentous to the UAS/UAV community because of the potential for launch and recovery, and for pursuit of payloads which require testing in air-to-ground-strikes.

Detailed information on the Range and the special use airspace availability can be found on the Atterbury-Muscatatuck Website under 'Capabilities - Special Use Airspace.'



The Jefferson Range offers:

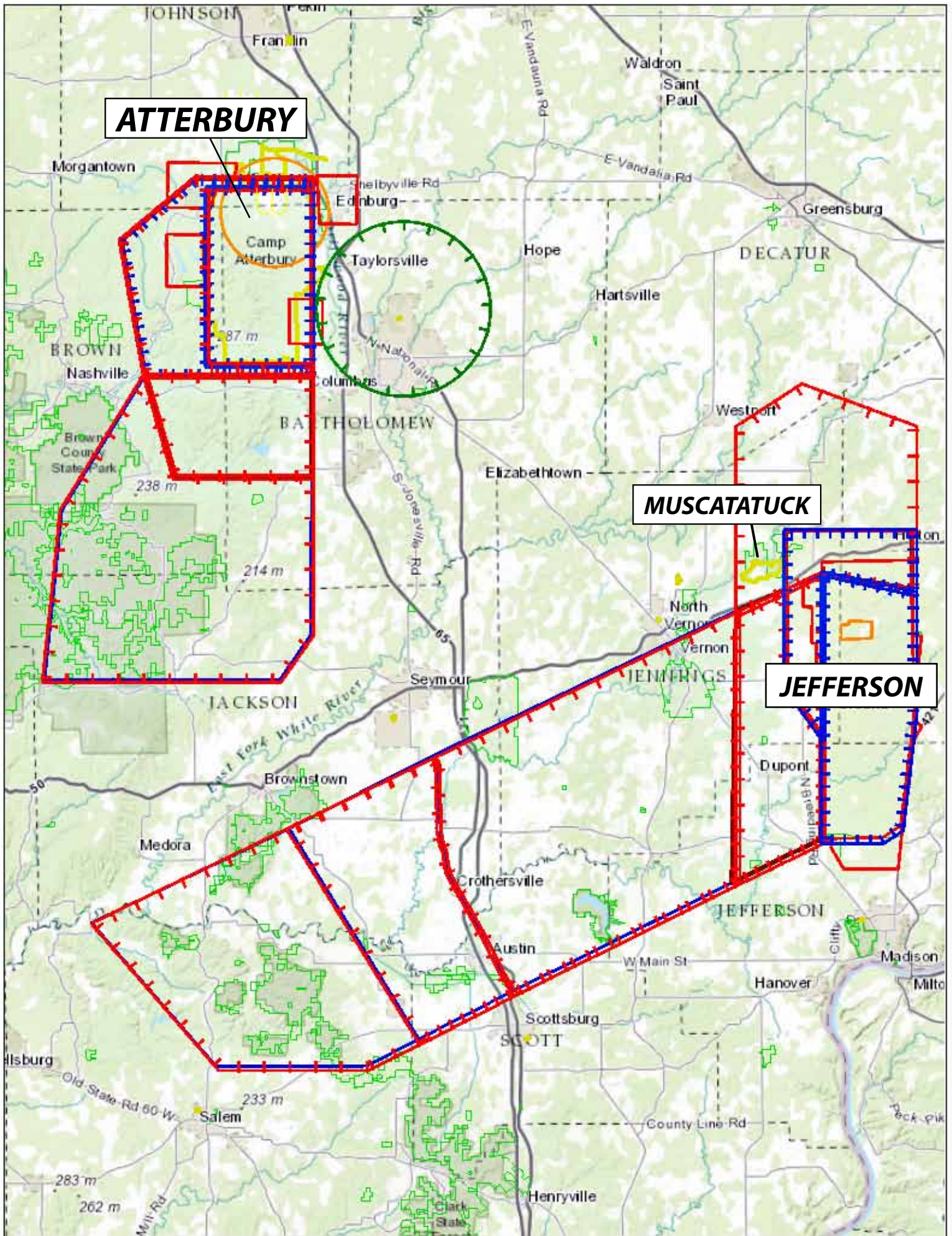
- Air-scored targets
- Strafe targets
- Rocket targets
- Laser capabilities
- Day and night operations for manned and unmanned activity
- Restricted airspace for unmanned flight training and testing

Range Office and Tower:

DSN: 873-5116

Com: (812) 689-7295

Fax: (812) 689-3519



DIRECTIONS

- From airport terminal, head southwest on Col. H. Weir Cook Memorial Dr toward I-70 for 2 miles.
- Use left ramp for I-70 (East) toward Indianapolis and continue 11 miles on I-70.
- From I-70 East, exit I-65 (South) toward Louisville and continue 35 miles on I-65.
- From I-65 South, exit 76B on US 31.
- At third stop light turn left onto County Road 800 S/ Hospital Rd.
- Follow Hospital Road for 2 miles to Camp Atterbury Main Gate on left.
- Be prepared to show photo ID.



DIRECTIONS

Driving Directions from CA to MUTC

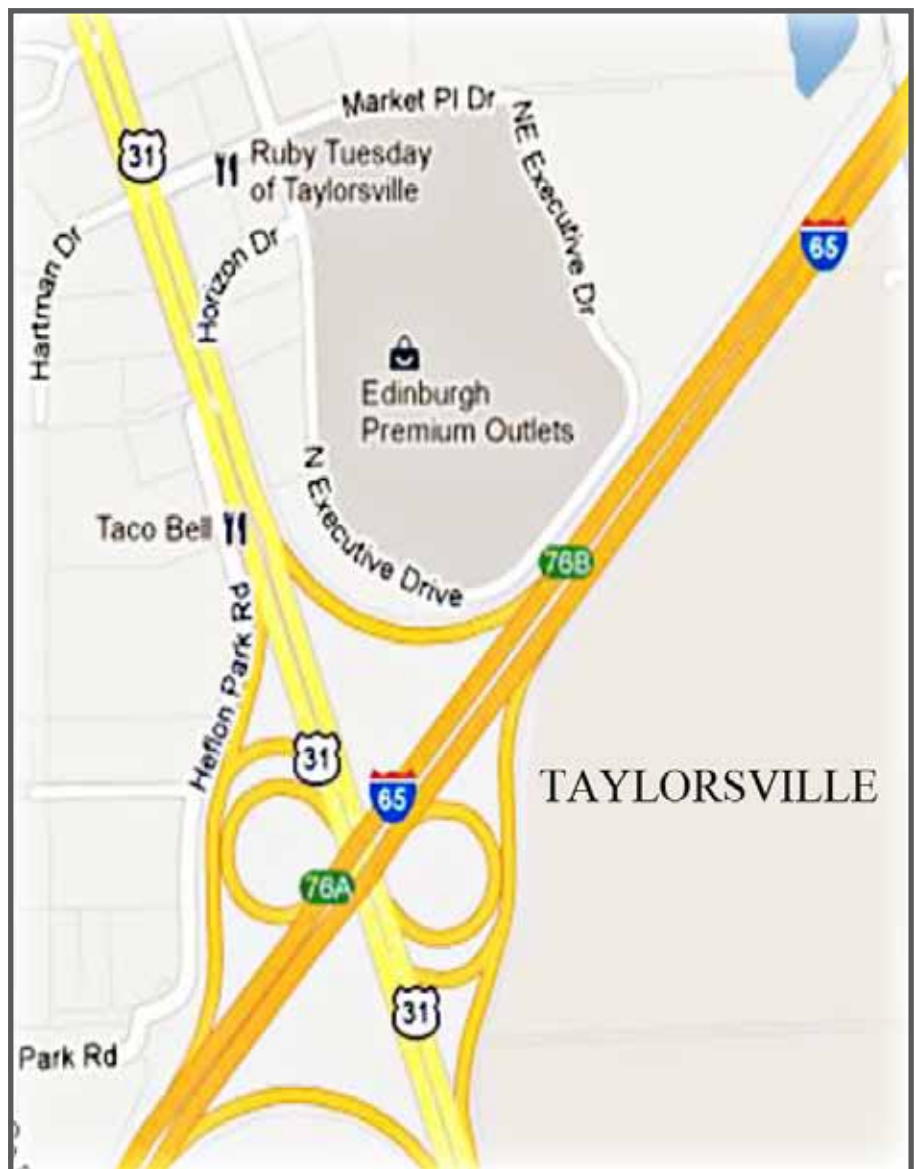
- Leave Camp Atterbury in the direction of US Hwy 31.
- Turn right at the light and continue on US 31 until you reach I65.
- Take I65 South. Stay on I65 exiting at 50A (Seymour/North Vernon).
- This will put you on Hwy 50 East.
- Stay on Hwy 50 East to North Vernon (about 12 miles).
- Hwy 50 will travel through the downtown area of North Vernon, crossing over Hwy 3 & 7. Stay on Hwy 50 East out of North Vernon for about 5 miles.
- There will be a sign for Muscatatuck and Purdue Southeast Agriculture Center, and a flashing light. A school will be to your right (Brush Creek Elementary).
- Turn left here crossing the RR tracks, and stay on this road to Muscatatuck (about 1 mile).



SURROUNDING AREAS

Camp Atterbury is located between the two communities of Franklin, 13 miles north, and Columbus, 15 miles south; and adjacent to Nineveh, Edinburgh, and Taylorsville. All of these neighboring communities offer a variety of fast food options and family dining. Most of these communities offer lodging. Please browse the following websites or call their visitors centers for more information.

www.columbus.in.us	800-468-6564
www.franklincoc.com	317-736-6334
www.browncounty.com	800-753-3255



GENERAL INFORMATION

Main Numbers

Camp Atterbury (812) 526-1499
Muscatatuck (812) 458-8780

Military Police

(CA) Non-Emergency (812) 526-1234
(CA) Emergency (812) 526-1109

Security Information

Reflective gear is expected to be worn from dusk to dawn when walking or running on post.

Computer Access

Personal Computers shall not be connected to Internet networks. Hardline internet access is provided in some housing.

Wireless Devices

Portable Computing Devices and Wireless devices are not allowed in classified areas. These devices are not permitted to be connected to military computers at anytime.

Vehicle Registration or Rental Agreement & Driver's License

Vehicle Registration and rental agreements (if applicable) should be present in vehicles at all times. Visitors driving on Atterbury-Muscatatuck should be licensed, with auto insurance. In the state of Indiana, the minimum liability coverage is \$25,000 per injured person up to \$50,000 per accident, and \$10,000 of property damage insurance.

www.in.gov/bmv

Driving on Post

Vehicle drivers will not use hand-held or hands-free communication devices such as cell phones, two-way radios or electronic devices such as personal data assistants while driving a vehicle. Vehicle drivers will operate these devices once the vehicle has been safely stopped and parked. This policy applies to all military and civilian personnel who operate a privately owned vehicle or government service administration vehicle on Camp Atterbury or Muscatatuck.

Seatbelts

You and your passengers, including children ages 8 and up, must always wear seatbelts while the vehicle is in motion.

POST FACILITIES

PX-AAFES

Bldg 611 Gatling St
Mon-Th: 0900-1800
Friday: 0900-1700
Sat-Sun: 1000-1700
(812) 526-1140

Military Lodging

Bldg 402 Clark St
Mon-Sat: 0700 -1600
(812) 526-1128

Troop Medical Center

Bldg 2 Evans Rd
Mon-Fri: 0700-1500
(812) 526-1120

ID Card Section

Bldg 343 Eggleston St
Mon-Sat: 0800-1600
(812) 526-1676

USO

Bldg 347
Mon-Fri: 0800-2200
Sat: 0900-2200
Sun: 0900-2100
(812) 526-1499 x62687

ATMs

Building 330,
All Ranks Club - 24 Hours
Building 613,
Laundromat - 24 Hours
Building 230,
USO - Business Hours

Fitness Center

Bldg 329
Mon-Th: 0630-2100
Friday: 0630-1730
Sat-Sun: 0800-1600
(812) 526-1499 ext. 2309

Bank

Bldg 502 Headquarters Rd.
Mon & Wed: 0900-1630
Friday: 0830-1630

Post Office

Bldg: 647 Gatling St
Mon, Tue, Fri: 0800-1530
Wed & Thur: 0800-1600
(812) 526-1111

Red Cross Office

Bldg 127 - IOC
812) 526-1499 ext. 1310

Barbershop & Laundry

Bldg: 613 Gatling St
(812) 526-1163

Dining facilities

Bldg 350 P#61809
Breakfast: 0530-0700
Lunch: 1100-1300
Dinner: 1700-1830

Chick-fil-A

On Gatling in front of the PX
Mon-Fri: 1100-1315

The House- All Ranks Club

Bldg 330, 5th Street & Eggleston
Sun-Thur: 0600-2200
Fri-Sat: 0600-2300
Delivery Daily: 1100-1900
(812) 526-1143

Subway

Bldg 646 Gatling St
Mon-Fri: 0700-2100
Sat: 0800-2100
Sun: 0900-2100
(812) 526-4162

MUTC FACILITIES

Dining Facility

Breakfast: 0600 - 0730
Lunch: 1100 - 1300
Dinner: 1700 - 1830
(812) 458-8780 ext.1438

Fresh Market

Mon-Sat: 0800-1400
Willing to stay open till 1600
(812) 458-8780 ext.1383

Coffee Shop

Mon-Sun: 0800-1600
(812) 458-8780 ext.1052



GARRISON

Air Field Operations Division

Himsel Airfield, Eggleston St.
Mon-Fri: 0800-2300
Sat-Sun: 0800-1600
(812) 526-1355

Chaplin

Bldg 327 Fairbanks St.
Mon-Fri: 0730-1600
(812) 526-1151

SERVICES:

Contemporary Protestant
Sunday: 1900
General Protestant
Sunday: 1800

Roman Catholic
Bused to Holy Trinity Catholic
Church in Edinburgh, IN
Sat: Bus departs at 1800
Sun: Bus departs at 0900

Directorate of Human Resources (DHR)

Bldg 332 Fairbanks St.
Mon-Sun: 0730-1630
(812) 526-1789

Directorate of Information Management (DOIM)

Bldg. 426 Headquarters Rd.
(812) 526-1608

Directorate of Logistics (DOL)

Bldg 3 Clarke St.
(812) 526-1499 x62645

Directorate of Public Work (DPW)

232 Eggleston St.
(812) 526-1443



Directorate of Resource Management (DRM)
Bldg 82 Fairbanks St.
Mon-Fri: 0730-1630
(812) 526-1499 ext. 2360

Integrated Training Area Management (ITAM)
Bldg 4032
Mon-Fri 0730-1600
812-526-1499 x61291

Range Training Land Program
Bldg 4032
Mon-Fri 7:30-4:00
812-526-1499 x62011

Protocol Office
Bldg 1 Headquarters Rd
(812) 526-1276

Simulation Division
725 22nd St.
Mon-Fri: 0730-1630
(812) 526-1400

Public Affairs Office (PAO)
Welcome Center & Museum,
Hospital Rd.
(812) 526-1433

Grizzly Operations
(317) 247-3300 ext 41777

Range Control Division
Bldg 127, Eggleston St.
(812) 526-1499 ext. 3992

Inspector General
Bldg 1 Headquarters Rd
Mon-Fri: 0800-1600
(812) 526-1338

State Resourced Programs
Bldg 1 Headquarters Rd
(812) 526-1295

Sustainable Range Program
Bldg 127
Mon-Fri: 0730-1600
(812) 526-1499 ext. 2237

