



Task Force Meeting

December 12, 2011

8 – 4:30 p.m.

DoubleTree Hotel

Overland Park, KS



Welcome Task Force Co-Chairs

- Brigadier General John R. McMahan, Northwestern Division Commander, U.S. Army Corps of Engineers
- Tom Christensen, Regional Conservationist, Natural Resources Conservation Service (NRCS) Central Region.
- Beth A. Freeman, FEMA Regional Administrator, Region VII.



Meeting Objectives

- Discuss the status of flood recovery
- Update the Task Force on the flood recovery efforts of the MRFTF working groups, coordinate the various activities of each work group, and give the working groups input and feedback.
- Raise flood recovery issues for consideration by the task force and co-chairs, highlighting areas that need more attention.
- Identify and undertake any Task Force course corrections.
- Enable the working group members to meet face to face, discuss the input from the Task Force, and move their efforts forward.



Today's Agenda

- Welcome and Opening Remarks
- Plan for the Day
- Working Group Presentations
- Lunch
- Discussion of Recovery and Working Groups
- Working Group Break-outs
- Working Group Reports
- Wrap-up



Status of Flood Recovery – Presentations

US Army Corps of Engineers

US Department of Agriculture

Federal Emergency Management Agency

Tribes

US States:

- Montana
- North Dakota
- South Dakota
- Nebraska
- Iowa
- Kansas
- Missouri
- Wyoming

OMAHA DISTRICT – MRFTF LEVEE REHABILITATION UPDATE

TED STRECKFUSS
DEPUTY DISTRICT ENGINEER

12 DECEMBER 2011



®

US Army Corps of Engineers
BUILDING STRONG®





Missouri River Levee Unit L-550



- Funding Received: \$22,000,000
- Funding Required: \$47,700,000
- Contract Award: October 25, 2011
- Repairs to 25 year level of flood risk reduction to be completed by 01 March 2012

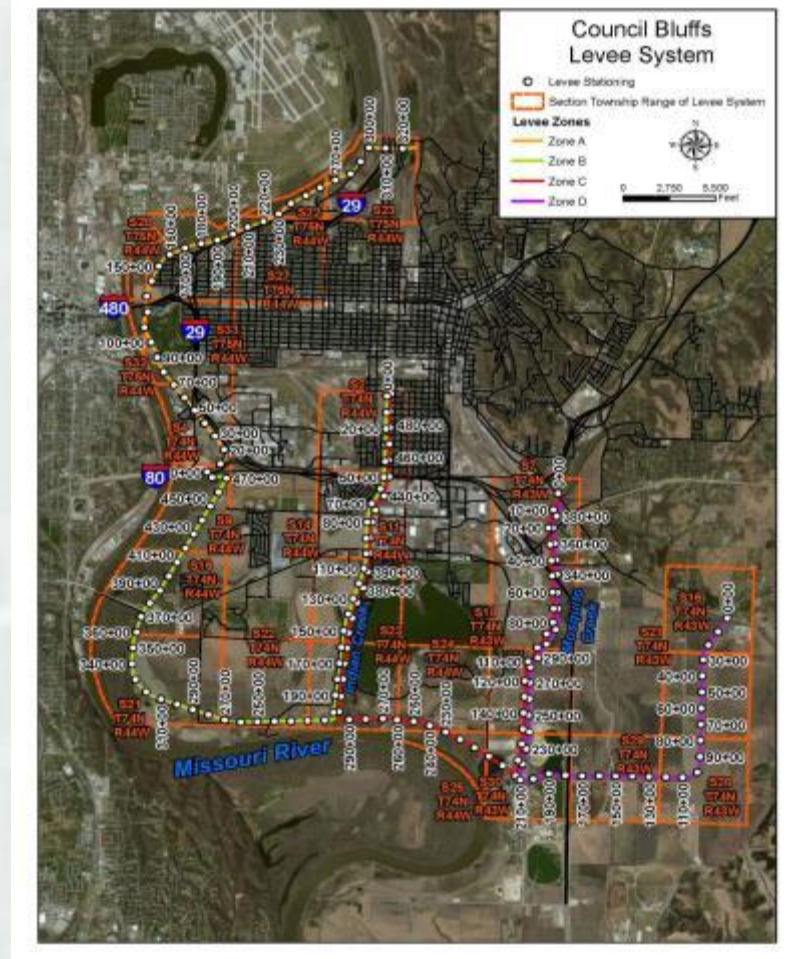




Missouri River Levee Unit L-624-627



- Funding Received: \$10,000,000
- Funding Required: \$17,000,000
- Contract Award: 12-16 December 2011
- Repairs to 25 year level of flood risk reduction to be completed by 01 March 2012





PL 84-99 Rehabilitation Requests Received



- Missouri River Levee Unit R-627 (Omaha, NE)
- Missouri River Levee Unit L-624-627 (Council Bluffs, IA)
- Missouri River Levee Unit L-611-614 (South of Council Bluffs, IA)
- Missouri River Levee Unit R-616 (Bellevue, NE)
- Missouri River Levee Unit R-613 (Bellevue, NE)
- Missouri River Levee Unit L-601 (Pacific Junction, IA)
- Missouri River Levee Unit L-594 (Bartlett, IA)
- Lake Wa Con Da (Cass County, NE)
- Missouri River Levee Unit L-575 (Percival, IA)
- Missouri River Levee Unit R-573 (Nebraska City, NE)
- Missouri River Levee Unit R-562 (Peru, NE)
- Main Ditch 6 (Hamburg, IA)
- Missouri River Levee Unit L-550 (Rockport, MO)
- Missouri River Levee Unit L-536 (Rockport, MO)
- Missouri River Levee Unit R-520 (Rulo, NE)



Kansas District – MRFTF Levee Rehabilitation Update

Jud Kneuvean
*Chief, Emergency
Management*

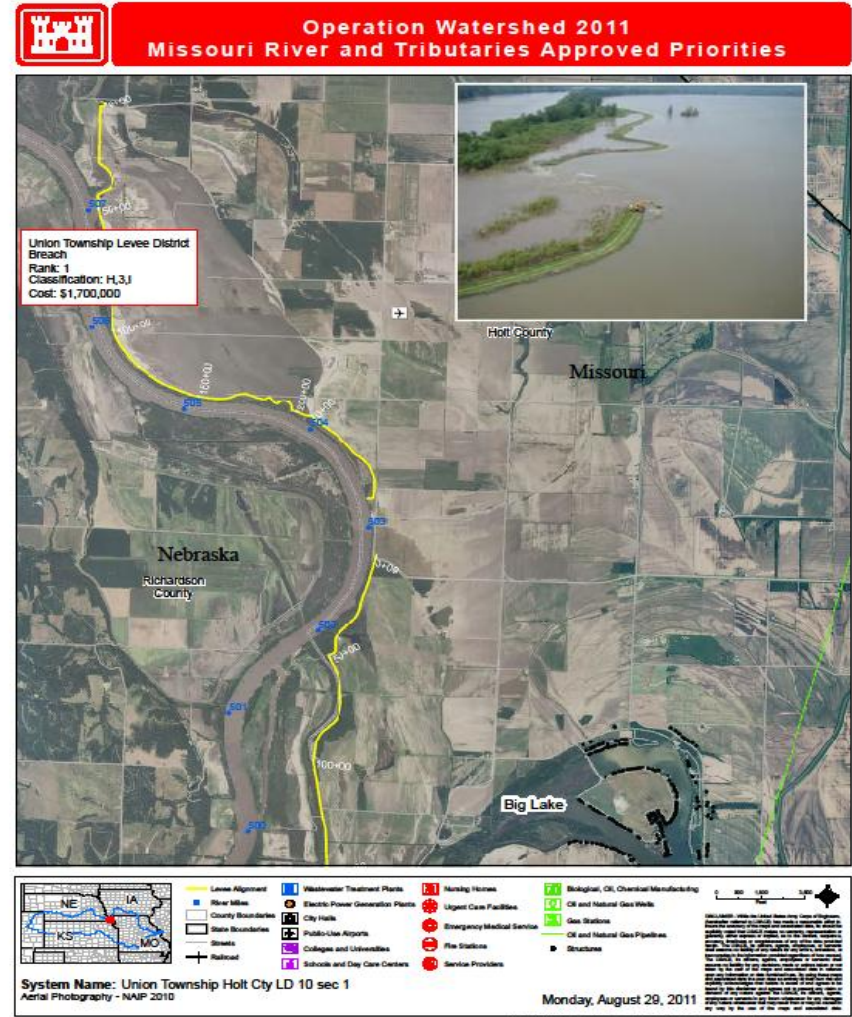
12 Dec 2011



US Army Corps of Engineers
BUILDING STRONG[®]

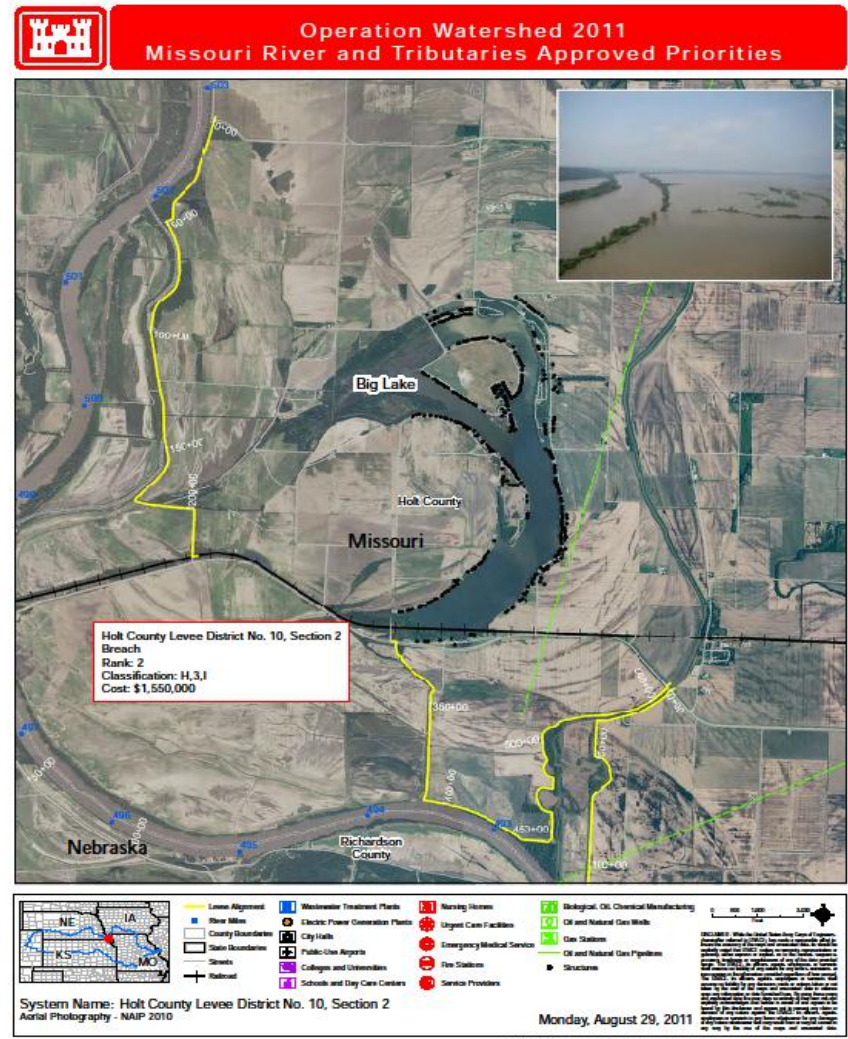
Union Township

- Funding Received: \$1,700,000
- Contract Award: January 2012
- Repairs to 25 year level of flood risk reduction to be completed by 01 March 2012



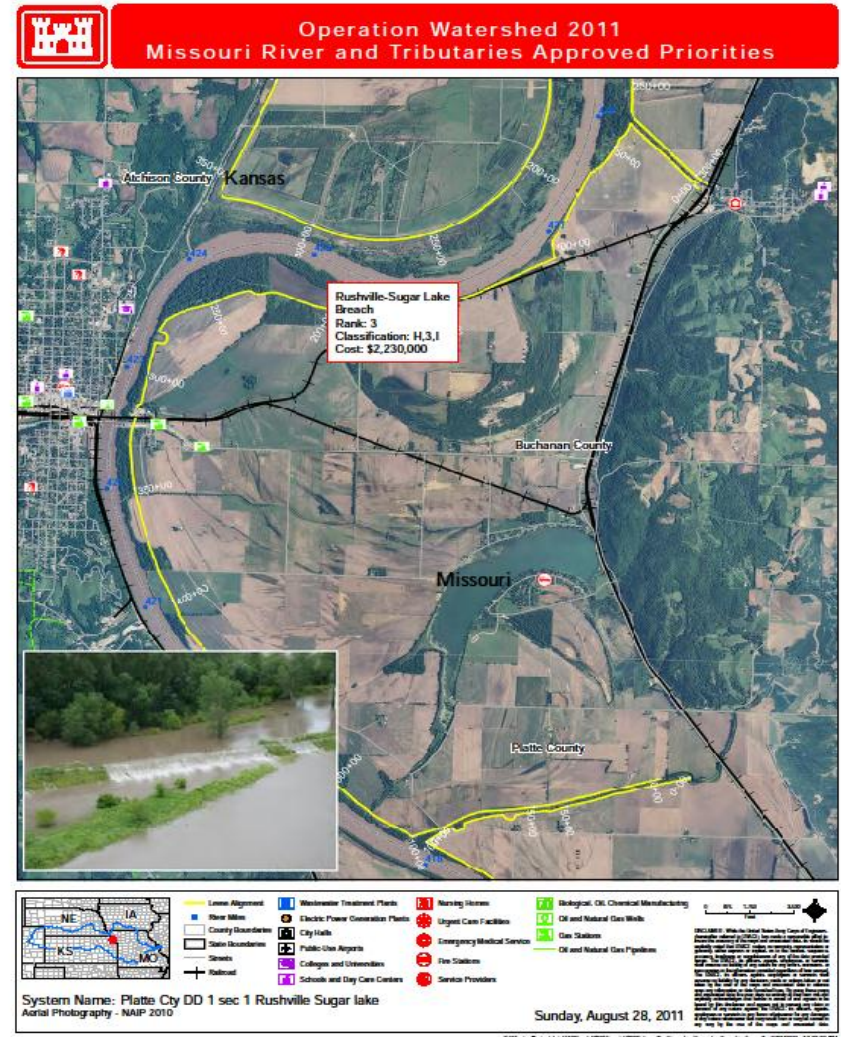
Holt County No. 10

- Funding Received: \$1,550,000
- Funding Needed: \$1,000,000
- Contract Award: January 2012
- Repairs to 25 year level of flood risk reduction to be completed by 01 March 2012



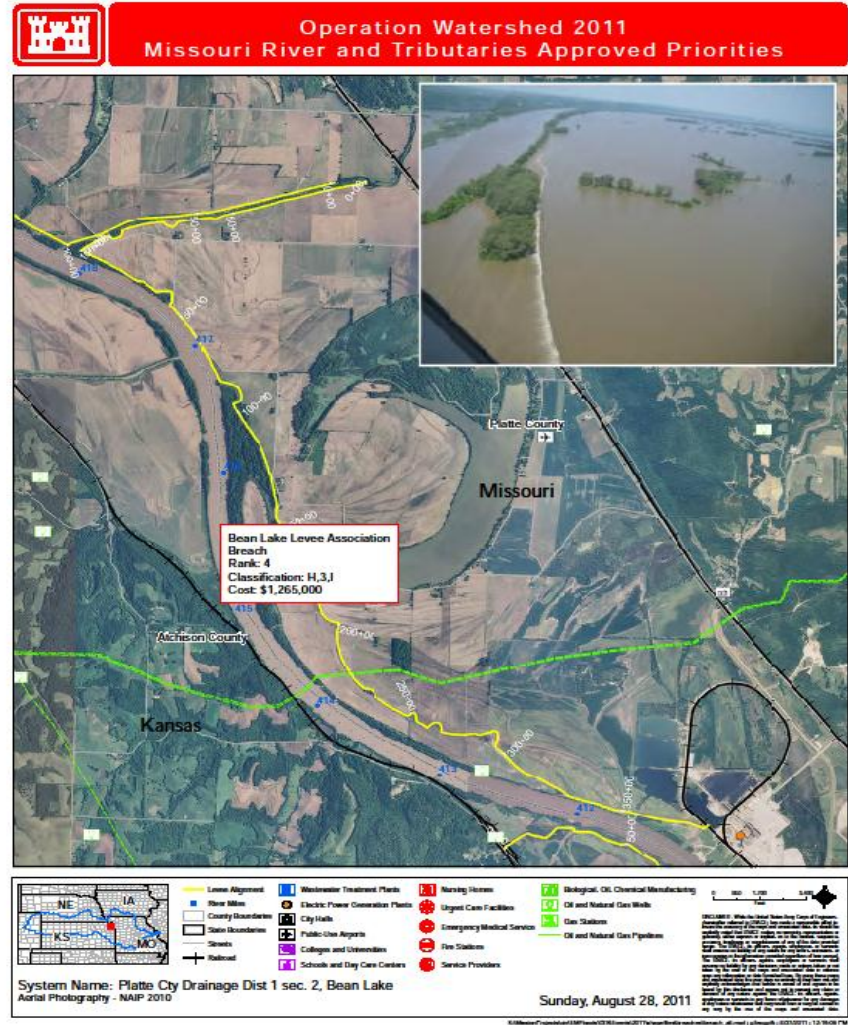
Rushville – Sugar Lake

- Funding Received: \$2,230,000
- Contract Award: January 2012
- Repairs to 25 year level of flood risk reduction to be completed by 01 March 2012



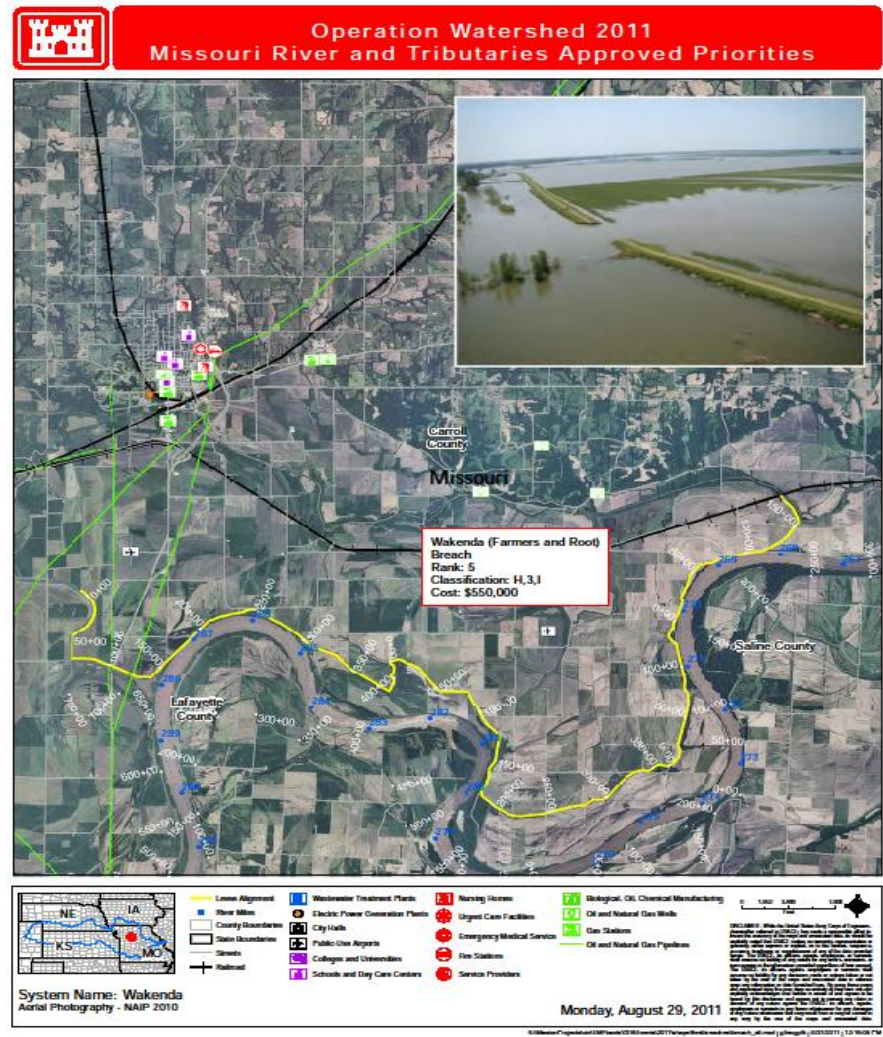
Bean Lake Levee

- Funding Received: \$1,265,000
- Funding Needed:
- Contract Award: January 2012
- Repairs to 25 year level of flood risk reduction to be completed by 01 March 2012



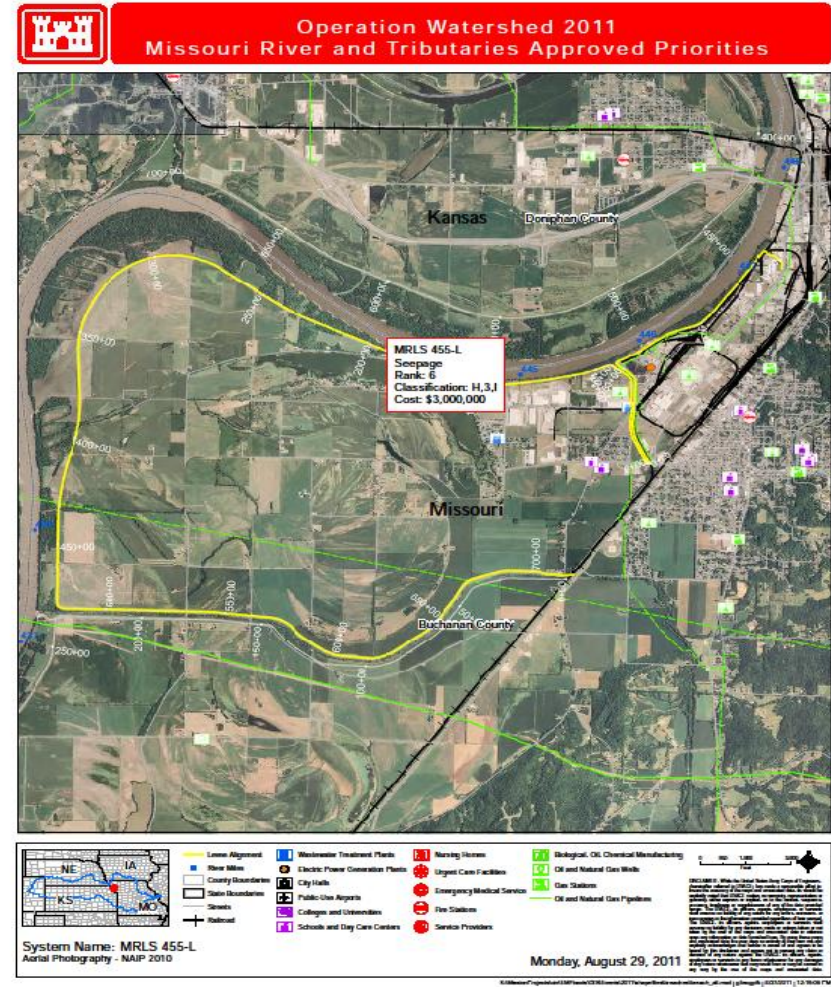
Wakenda Levee District

- Funding Received: \$550,000
- Funding Needed:
- Contract Award: January 2012
- Repairs to 25 year level of flood risk reduction to be completed by 01 March 2012



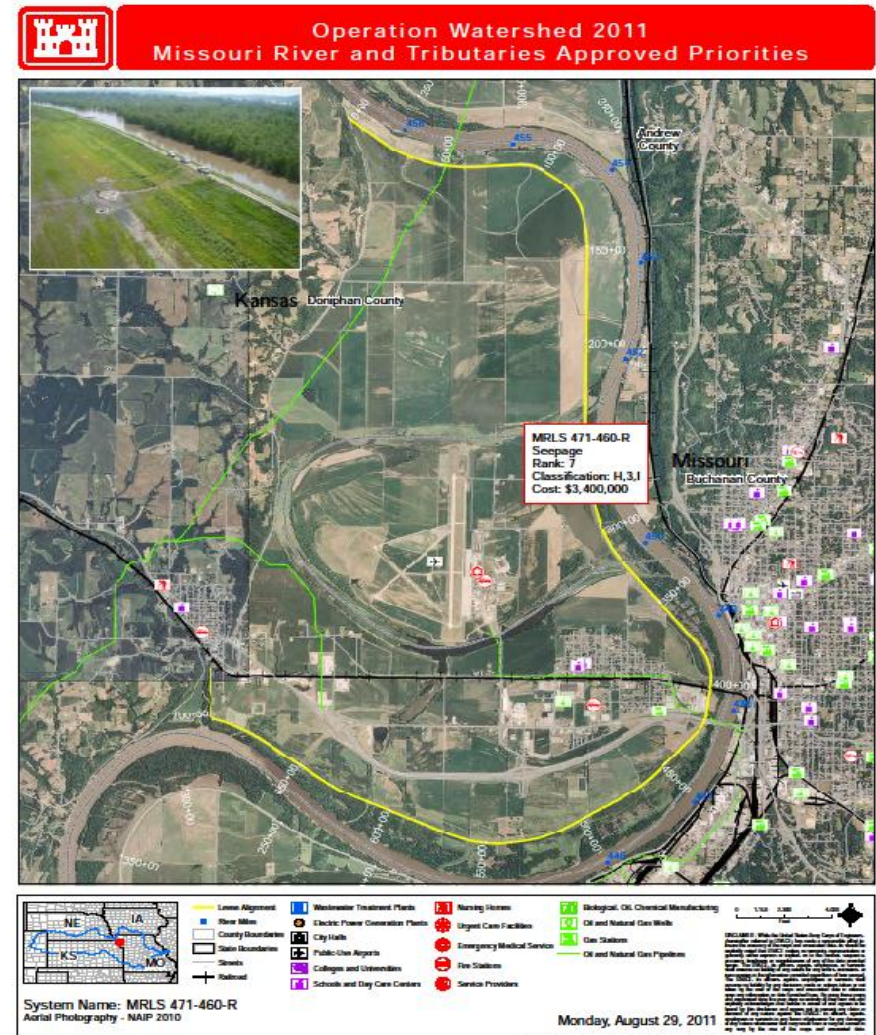
Missouri River Levee 455-L

- Funding Received: \$3,000,000
- Contract Award: 31 January 2012
- Repairs to 25 year level of flood risk reduction to be completed by 01 March 2012



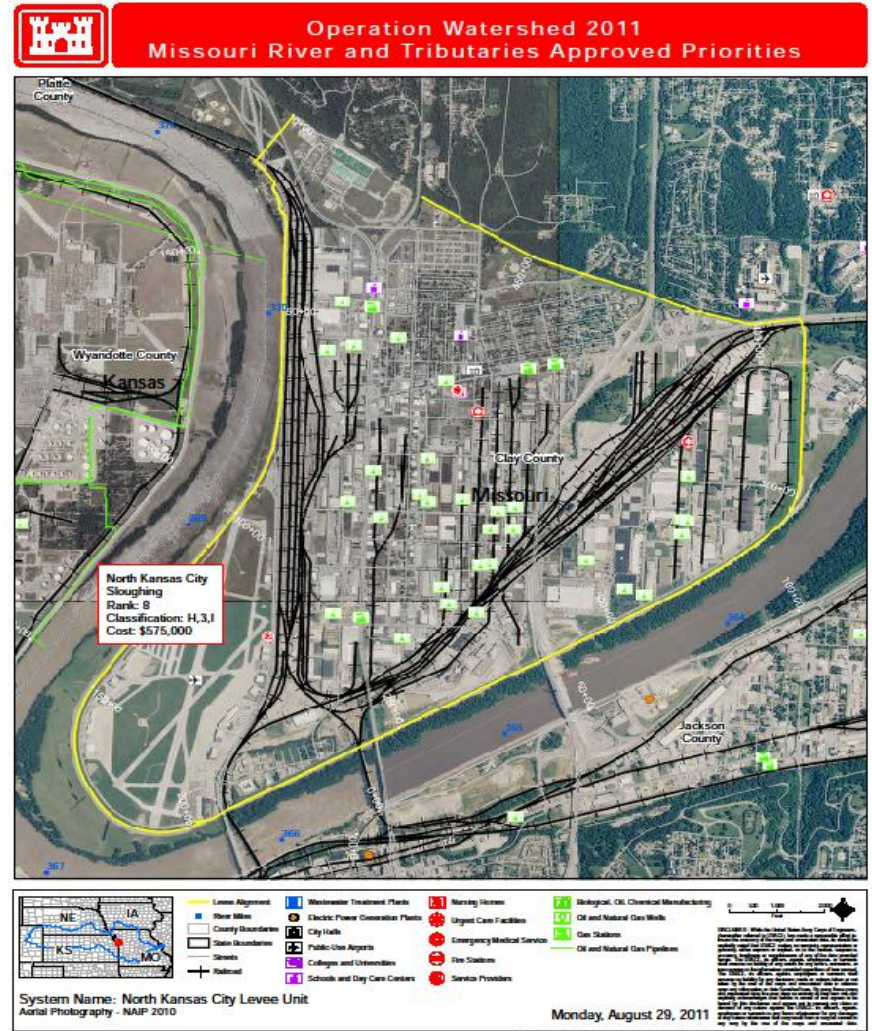
Missouri River Levee 471-460-R

- Funding Received: \$3,400,000
- Funding Needed: \$1,000,000
- Contract Award: 31 Jan 2012
- Repairs to 25 year level of flood risk reduction to be completed by 01 March 2012



North Kansas City

- Funding Received: \$575,000
- Contract Award: 21 Dec 2011
- Repairs to 25 year level of flood risk reduction to be completed by 01 March 2012



PL 84-99 Rehabilitation Requests Received

- **Union Township Levee District , Holt County, MO**
- **Holt County LD No. 10 , Holt County, MO**
- Missouri River Levee 512-513-R, Richardson County, NE
- Holt County No. 9, Holt County , MO
- Canon Drainage District, Holt County, MO
- Kimsey Holly Creek, Holt County, MO
- Missouri River Levee 500-R, Doniphan, KS
- Missouri River Levee 497-L, Holt County, MO
- Missouri River Levee 488-L, Holt County, MO
- Missouri River Levee 482-R, Doniphan County, KS
- Missouri River Levee 476-L, Andrew County, MO
- **Missouri River Levee 471-460-R, Doniphan County, KS**
- **Missouri River Levee 455-L, Buchanan County, MO**
- Missouri River Levee 448-443-L, Buchanan County, MO



PL 84-99 Rehabilitation Requests Received (Cont'd)

- Missouri River Levee 440-R, Atchison & Douglas County, KS
- **Rushville-Sugar Lake, Platte & Buchanan County, MO**
- **Bean Lake Levee Association, Platte County, MO**
- Henry Pohl Levee, Atchison County, KS
- Grape-Bollin-Schwartz Levee, Leavenworth County, KS
- Missouri River Levee 408-L, Platte County, MO
- Kansas Department of Corrections, Leavenworth County, KS
- Missouri River Levee 400-L, Platte County, MO
- Wolcott Drainage District, Wyandotte County, MO
- **North Kansas City, Clay County, MO**
- Tri-County of Ray, Clay, & Jackson County District, MO
- Egypt Levee & Drainage District, Ray County, MO
- Missouri Valley D&L District of Ray County, Section 1, MO
- Henrietta-Crooked River L&D District, Sec 2
- Henrietta-Crooked River L&D District, Sec 1



PL 84-99 Rehabilitation Requests Received (Cont'd)

- Ray County Levee & Drainage District, Ray County, MO
- Belcher-Lozier Levee District, Carroll County, MO
- Miles Point Drainage District, Carroll County, MO
- Baltimore Bend Levee District, Carroll County, MO
- Cherry Valley Levee District, Carroll County, MO
- **Wakenda (Farmers and Root) Levee District, Carroll County, MO**
- Sugartree Bottom Levee District, Carroll County, MO
- Saline-Lafayette Levee District, Saline County, MO
- Coles Lake Drainage District, Saline County, MO
- Malta Bend Levee District, Saline County, MO
- Teteseau Bend Levee District, Saline County, MO
- Mi-De Levee District, Carroll County, MO
- Brunswick Levee District, Carroll County, MO
- Garden of Eden Drainage District, Section 1, Chariton County, MO



PL 84-99 Rehabilitation Requests Received (Cont'd)

- Miami Levee District No. 1, Carroll County, MO
- Saline County Levee District No, Saline County, MO
- Lower Chariton, Saline County, MO
- Cambridge Levee Association, Saline County, MO
- Howard County Drainage District No. 3, Section 2, Howard County, MO
- McBaine Levee District, Boone County, MO
- Plowboy Bend Levee District, Moniteau County, MO
- Cole Junction Levee District, Cole County, MO
- Clyde, KS Levee, Cloud County, KS
- North Topeka Drainage District, Shawnee County, KS



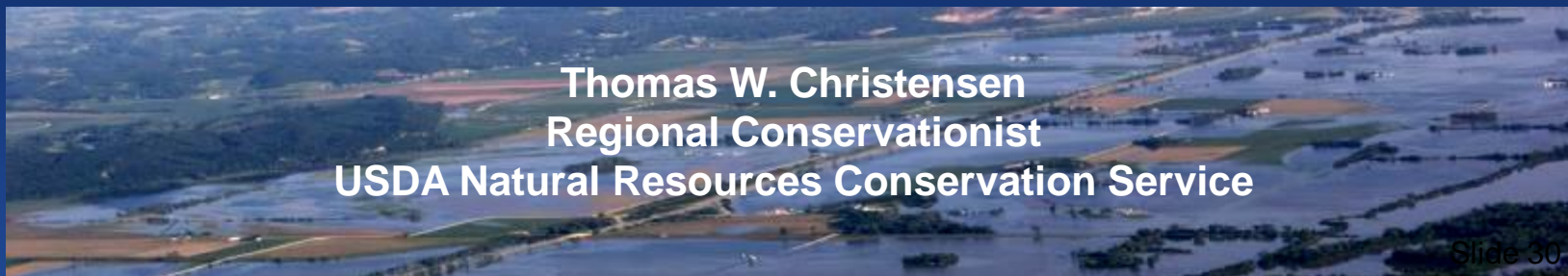


United States Department of Agriculture

Missouri River Flood Task Force

December 12, 2011

Kansas City, MO



Thomas W. Christensen
Regional Conservationist
USDA Natural Resources Conservation Service

Slide 30



Flood Response, Recovery, and Mitigation

Natural Resources Conservation Service (NRCS)

- Flood Response
 - EWPP – Emergency Watershed Protection Program
- Flood Recovery
 - EWPP – Emergency Watershed Protection Program
- Flood Mitigation *(to address long-term flood risk management)*
 - CTA – Conservation Technical Assistance Program
 - EQIP – Environmental Quality Incentive Program
 - EWPP-FPPE – Floodplain Easements
 - WRP – Wetlands Reserve Program
 - Watershed Rehabilitation Program
 - Snow Survey and Water Supply Forecasting Program (including SNOpack TELEmetry aka SNOTEL)
 - Soil Climate Analysis Network (SCAN)



Flood Response, Recovery, and Mitigation

Natural Resources Conservation Service (NRCS)

- EWPP – Emergency Watershed Protection Program
 - Received \$216 million to fund waitlisted exigencies for 2010 and 2011 events that received a federal declaration
 - No Missouri River Flood applications received to date, though many locations have not been accessible until recently
 - 11 applications totaling \$10 million expected from Missouri
- General WREP – Wetland Reserve Enhancement Program
 - Chief will allocate up to \$15 million in financial assistance for new WREP agreements and the associated technical assistance
 - State Conservationists and Directors will assist interested partners with the development of project proposals to be submitted to NRCS National Office for funding consideration.
- WRP Restoration
 - Funds may be available to restore existing WRP sites where vegetation was destroyed.
- EQIP
 - Financial assistance is available to restore previously applied, EQIP assisted structural and vegetative cover practices where feasible.



Flood Response, Recovery, and Mitigation

Farm Service Agency (FSA)

- FSA is working to provide a market-oriented, economically and environmentally sound American agriculture delivering an abundant, safe, and affordable food and fiber supply while sustaining quality agricultural communities.
- FSA Administers the Emergency Conservation Program (ECP) which provides emergency funding and technical assistance for farmers and ranchers to rehabilitate farmland damaged by natural disasters.
- To date FSA:
 - Has received \$40.5 million of applications for damages from the 2011 Missouri River Floods
 - Congress has appropriated \$122.9 million for the ECP but these funds are to cover all claims including the Missouri River Flooding, Hurricane Irene, and the Tornados
 - FSA will allocate funds to affected states/counties once funds are apportioned by OMB

<http://www.FSA.usda.gov/>



Flood Response, Recovery, and Mitigation

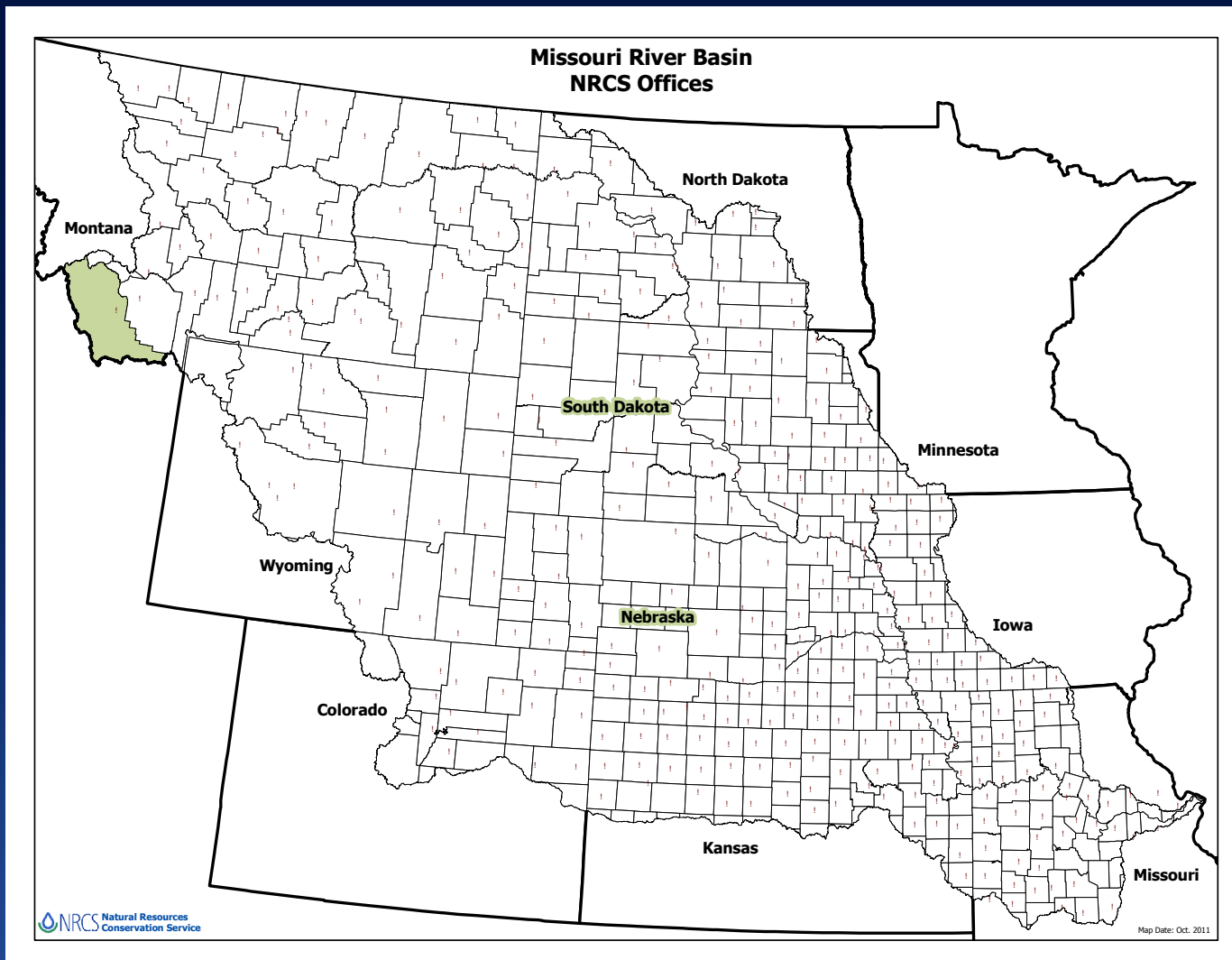
Risk Management Agency (RMA)

- RMA provides crop insurance, via the Federal Crop Insurance Corporation, to American producers. RMA:
 - Is responsible for developing actuarially sound crop insurance rates based on natural risks;
 - Partners with 15 companies and their agents to sell and service policies, manage loss adjusters, and pay claims.
- To date, more than \$100 million in claims paid on this flood event. RMA, along with Insurance Companies, will continue to effectively address this event that has impacted perhaps three-quarters of a million acres. Since June, RMA has:
 - Participated in 9 public meetings;
 - Issued 6 news releases or guidance documents to producers and/or insurance companies to clarify crop insurance policies and procedures.
- For Spring Crops, 2012 terms of insurance (e.g. rates, T-Yields, high risk maps, and statements) were posted on November 30. For more information, please visit: <http://www.rma.usda.gov/>



United States Department of Agriculture

USDA Offices in the Missouri River Basin





United States Department of Agriculture



The U.S. Department of Agriculture (USDA) prohibits discrimination in all its programs and activities on the basis of race, color, national origin, sex, religion, age, disability, political beliefs, sexual orientation, and marital or family status. (Not all prohibited bases apply to all programs.) Persons with disabilities who require alternative means for communication of program information (Braille, large print, audiotape, etc.) should contact USDA's TARGET Center at (202) 720-2600 (voice and TDD). To file a complaint of discrimination write USDA, Director, Office of Civil Rights, Room 326-W, Whitten Building, 14th and Independence Avenue, SW, Washington, DC 20250-9410 or call (202) 720-5964 (voice or TDD). USDA is an equal opportunity provider and employer.

FEMA Region VII

Missouri River Flooding: Presidential Disaster Declarations

presented to the
Missouri River Flood Task Force

Regional Administrator Beth Freeman
December 2011



FEMA

Missouri River Flooding 2011



FEMA

FEMA-4012-DR-MO Disaster Declaration as of 09/23/2011

Declared on 08/12/2011
Amendment No.3: 09/23/2011

INCIDENT PERIOD:
June 1 to August 1, 2011

INCIDENT:
Flooding

INDIVIDUAL ASSISTANCE:


Andrew, Atchison, Buchanan, Holt,
Lafayette, and Platte

PUBLIC ASSISTANCE:




Andrew, Atchison, Buchanan, Carroll, Cooper, Holt,
Howard, Lafayette, Platte, Ray, and Saline

*All counties and the Independent City of St. Louis
in the State of Missouri are eligible to apply for
assistance under the Hazard Mitigation Grant Program.*

ICS Facilities

 Joint Field Office (JFO)
USNG: 15S WD 59047 13673

Designated Counties

-  Not Designated
-  Individual Assistance & Public Assistance
-  Public Assistance

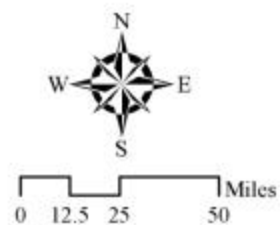
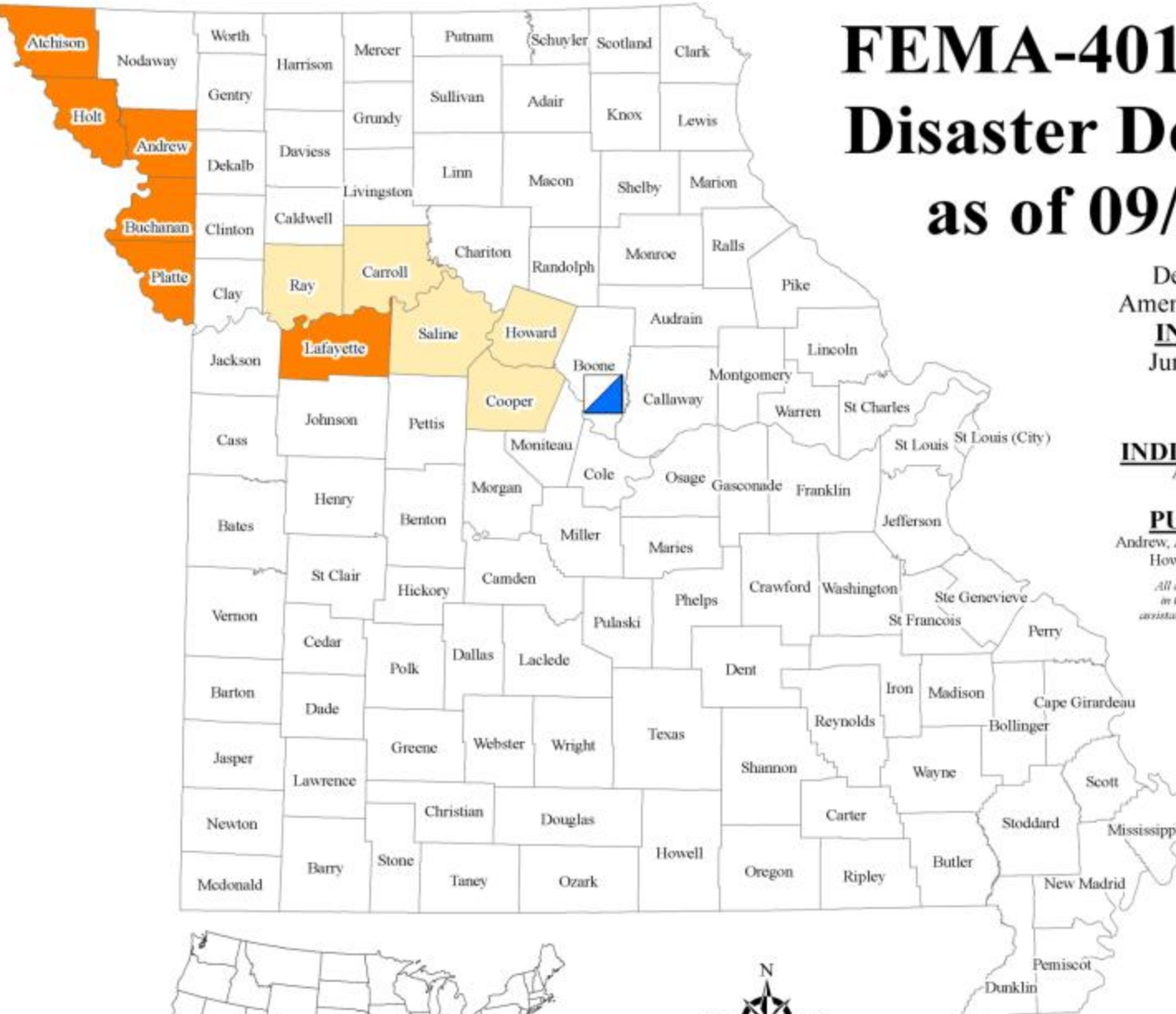
*Source: Federal Registry Notice
09/23/2011*

*Declaration
Declared 08/12/2011 - 6 IA Counties
FCO Appointment
DR-4012 Amendment No. 1: 08/31/2011
10 PA Add-on Counties
DR-4012 Amendment No. 2: 09/09/2011
1 PA Add-on Counties
DR-4012 Amendment No. 3: 09/23/2011*

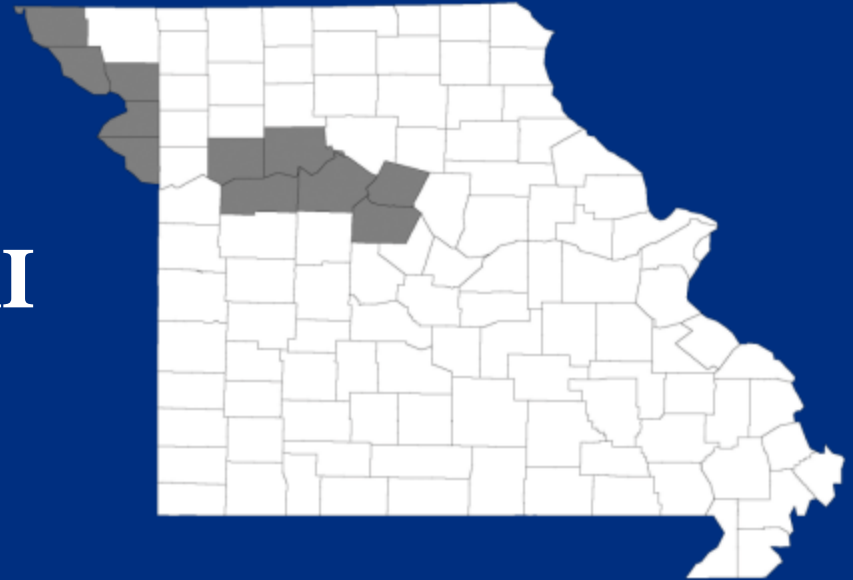


Geospatial Intelligence Unit
Region VII
JFO Columbia, MO
09/23/2011

MAP ID: DR-4012-09232011 LAND



FEMA-4012-MISSOURI



ASSISTANCE

- Individual Assistance Registrations: 851
- Public Assistance Estimated Damage: \$38,839,174

LEVEES

- 2 federal levees breached
- 9 non-federal levees breached

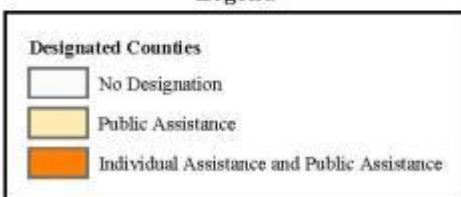
FEMA-1998-DR, Iowa Disaster Declaration



Location Map



Legend



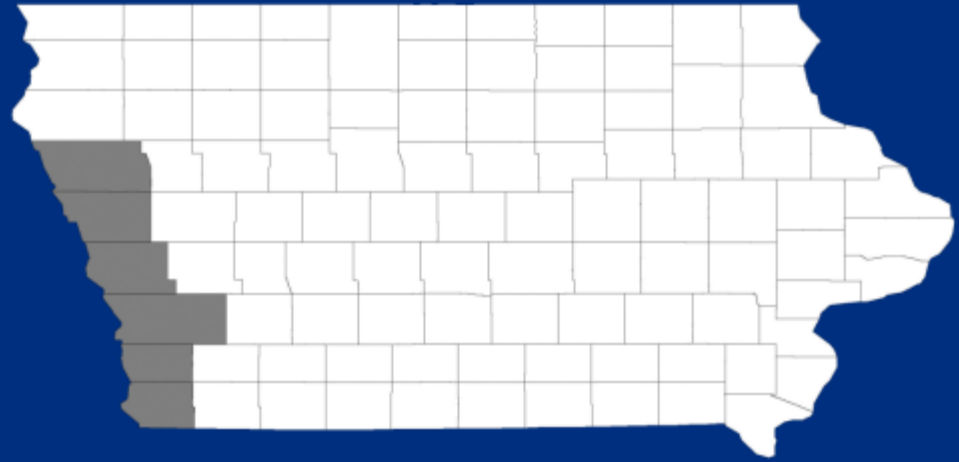
All counties in the State of Iowa are eligible to apply for assistance under the Hazard Mitigation Grant Program.



Mapping and Analysis Center
Washington, DC
10/19/11 -- 9:50 AM EST

Source: Disaster Federal Registry Notice
And No. 3: 10/18/2011

FEMA-1998-IOWA



ASSISTANCE

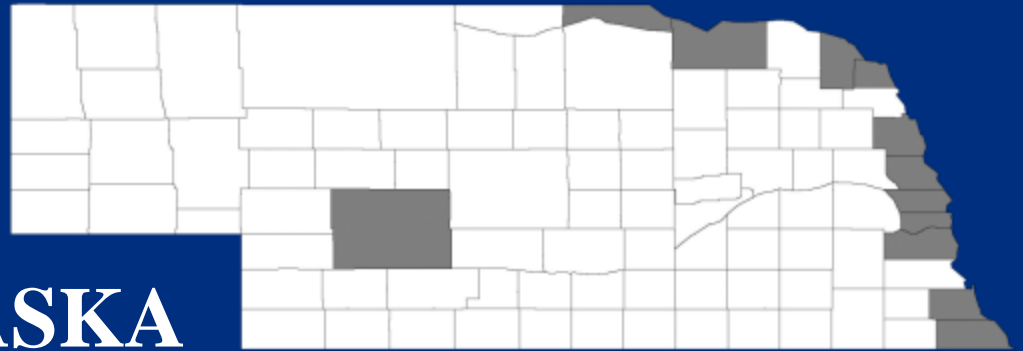
- Individual Assistance Registrations: 1,164
- Public Assistance Estimated damage: \$78,711,454

MAJOR INFRASTRUCTURE

- Seven major state and U.S. routes along the Missouri River were closed because of flooding

LEVEES

- 1 federal levee breached
- 4 non-federal levees breached



FEMA-4013-NEBRASKA

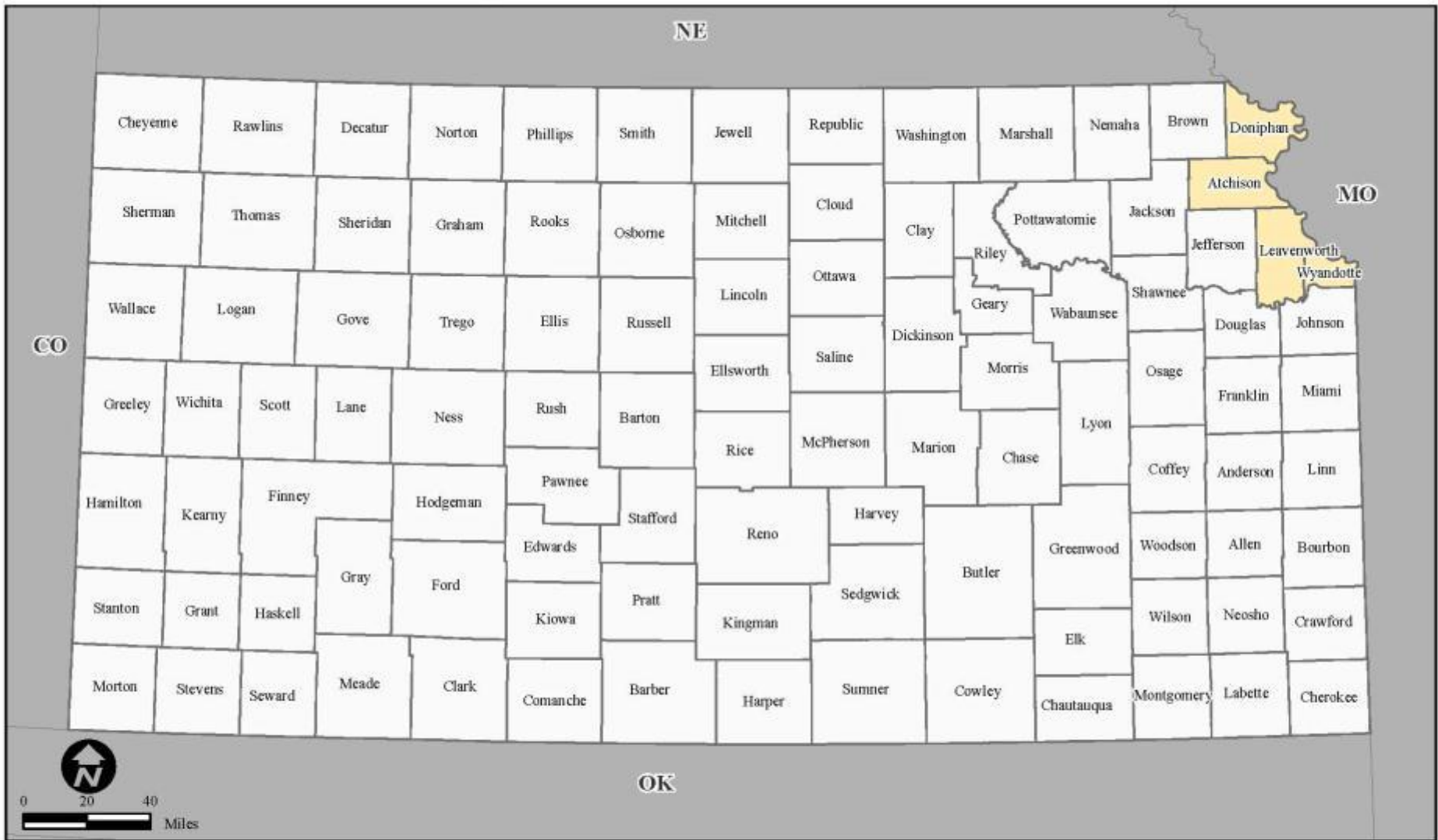
ASSISTANCE

- Individual Assistance Registrations: 1,091
- Public Assistance Estimated Damage: \$133,974,853

LEVEES

- 1 federal levee breach
- No *known* non-federal levee breaches

FEMA-4035-DR, Kansas Disaster Declaration



Location Map



Designated Counties

- No Designation
- Public Assistance

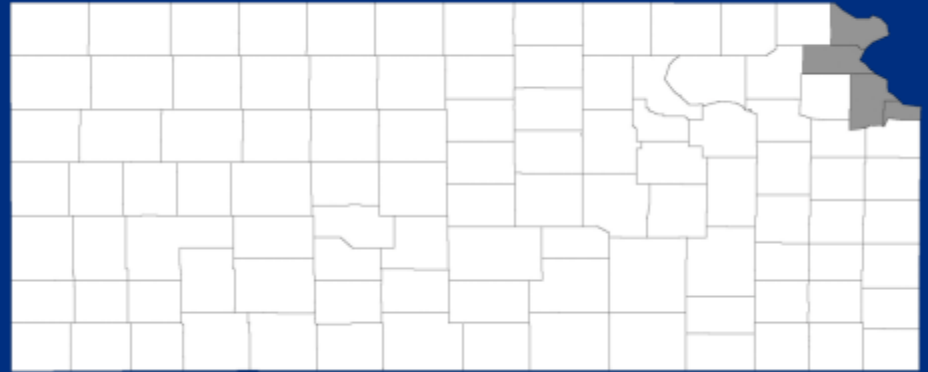
All counties are eligible for Hazard Mitigation



ITS Mapping & Analysis Center
Washington, DC
09/23/11 - 11:04 PM EST

Source: Disaster Federal Registry Notice
09/23/2011

FEMA-4035-KANSAS



ASSISTANCE

- Public Assistance Estimated Damage: \$7,462,880

MAJOR INFRASTRUCTURE

- Damage primarily to roads and bridges
- 19 percent of damage was to water control facilities
- At one point, Leavenworth Water Works was severely impacted; a 24-inch supply line remains underwater.

LEVEES

- No federal levee breaches
- 4 non-federal levee breaches



FEMA



FEMIA

FEMA Region VIII

Missouri River Flooding: Presidential Disaster Declarations

presented to the
Missouri River Flood Task Force

Roger Jones, FEMA Region VIII, Recovery
December 2011



FEMA

Missouri River Flooding 2011



Minot, ND



Pierre, SD



Montana AP



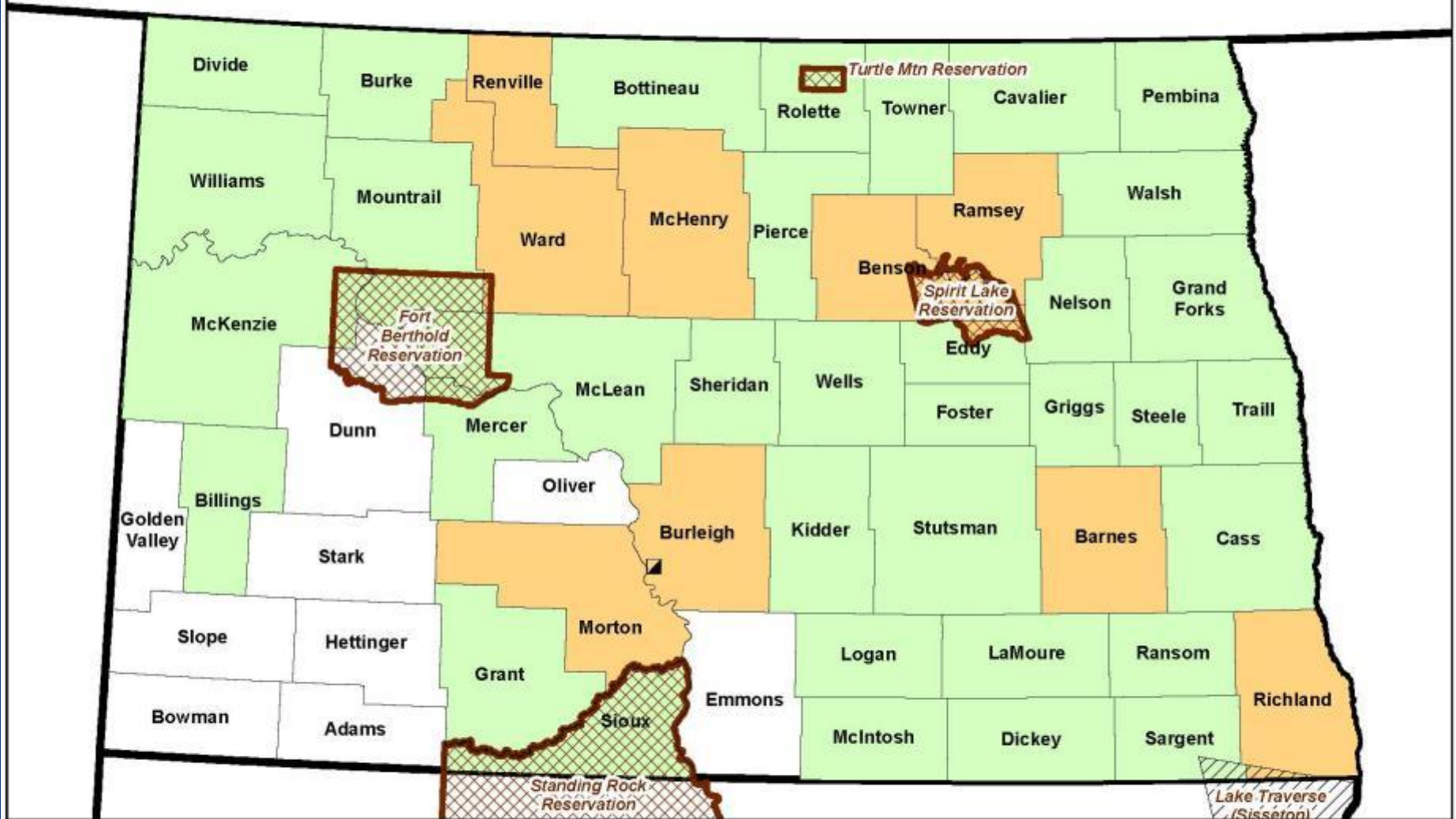


FEMA

FEMA-1981-DR-ND

Flooding/Declaration Date: May 10, 2011

Incident Period February 14, 2011 - July 20, 2011/Amendment No 9 - August 4, 2011

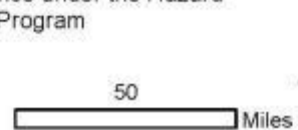


Designated Counties and Tribal Nations

- IA and PA (9)
- IA and PA Tribal Nations (1)
- PA (35)
- Bismarck JFO
- Tribal Nations Designated for Public Assistance (3)

All counties and Indian Tribes in the State of North Dakota are eligible to apply for assistance under the Hazard Mitigation Grant Program

Name: msmoot
Date: 08/04/2011
Source: HSP Gold & FEMA Region VIII data

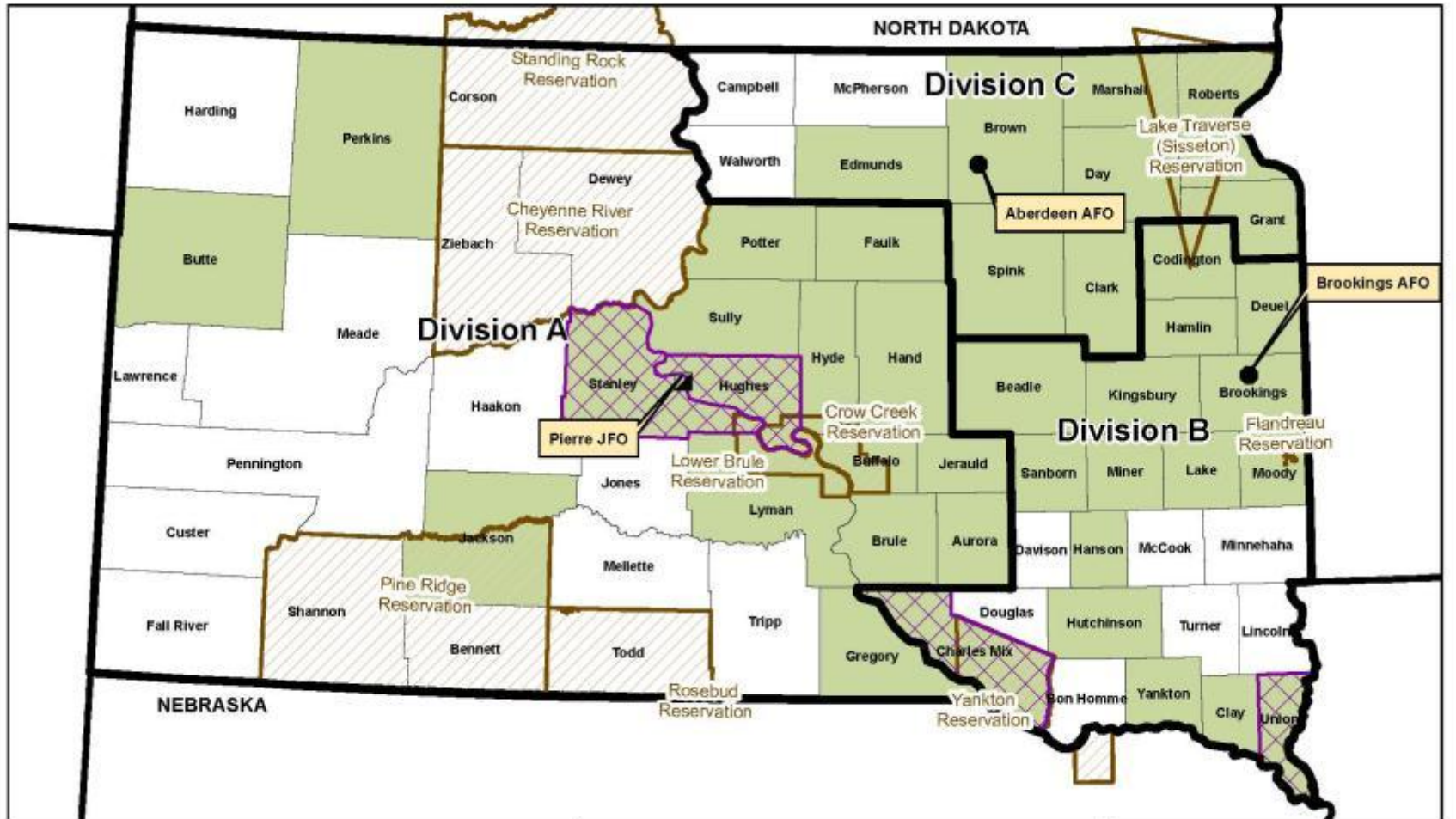


FEMA-1981-DR-NORTH DAKOTA


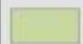

- Individual Assistance Registrations: 10,284 as of 12/09/11
- Public Assistance Estimated Damage: Projected \$300,000,000 in FEMA Eligible Costs
- Federal Share 90% at \$270,000,000

South Dakota: FEMA-1984-DR

Flooding - Declaration Date: May 13th, 2011



Legend

-  IA (Individual Assistance) Declarations
-  PA (Public Assistance) Declarations
-  Tribal Reservation Boundaries

FEMA Region VIII Mitigation GIS

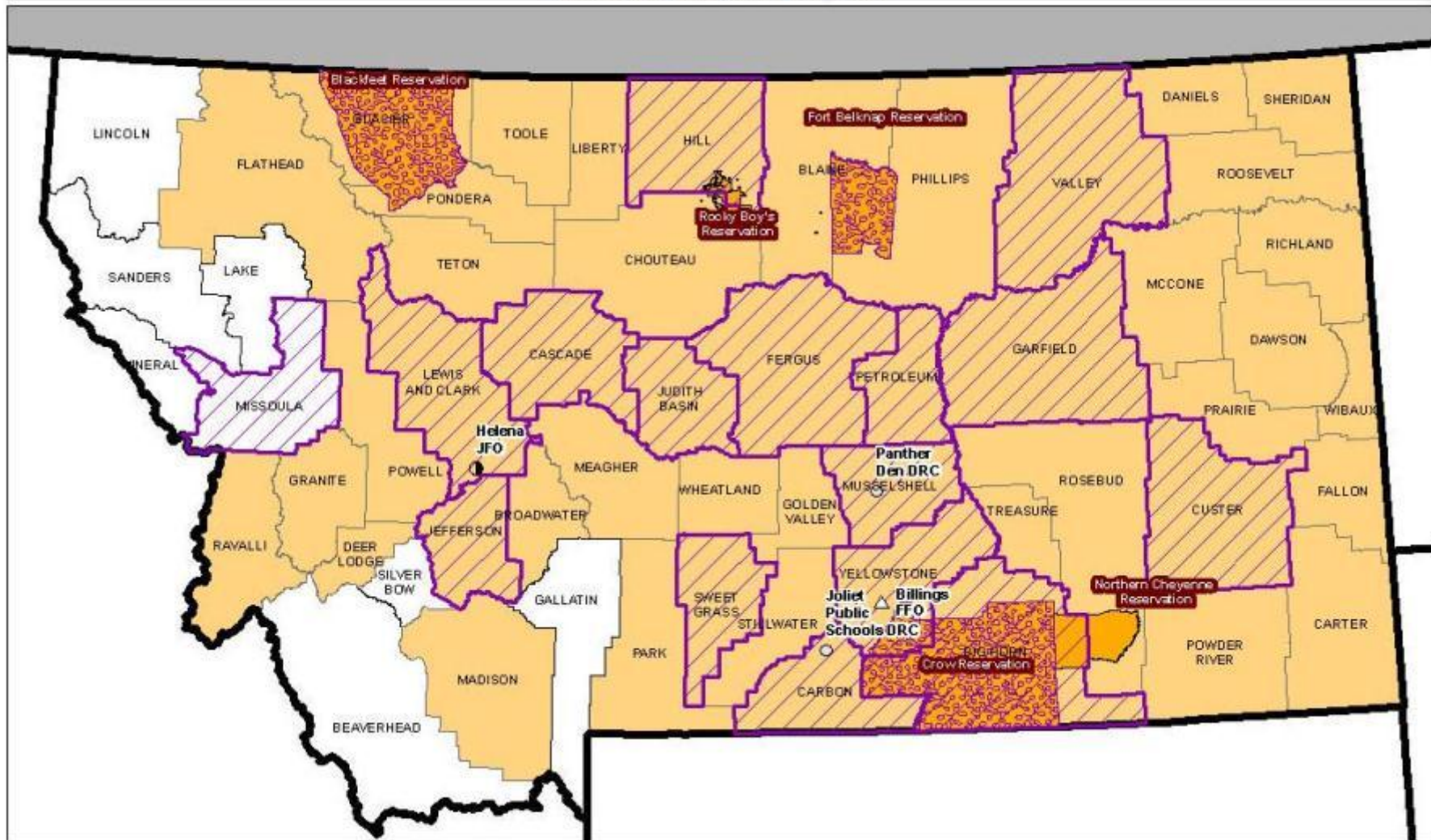


Source: States, Counties, and Tribal Areas provided by HSIP2008.



FEMA-1984-DR-SOUTH DAKOTA

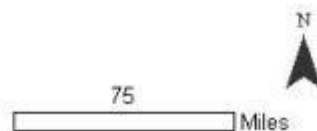
- Individual Assistance Registrations: 1,758 as of 12/09/11
- Public Assistance Estimated damage: Projected at \$51,000,000 FEMA Eligible Costs
- Federal Share 75% at \$38,250,000



Legend

- | | | | |
|--|---------------------------------|--|-----|
| | Tribal Reservations Declared PA | | FFO |
| | Tribal Reservations Declared IA | | JFO |
| | Counties Declared PA | | DRC |
| | Counties Declared IA | | |

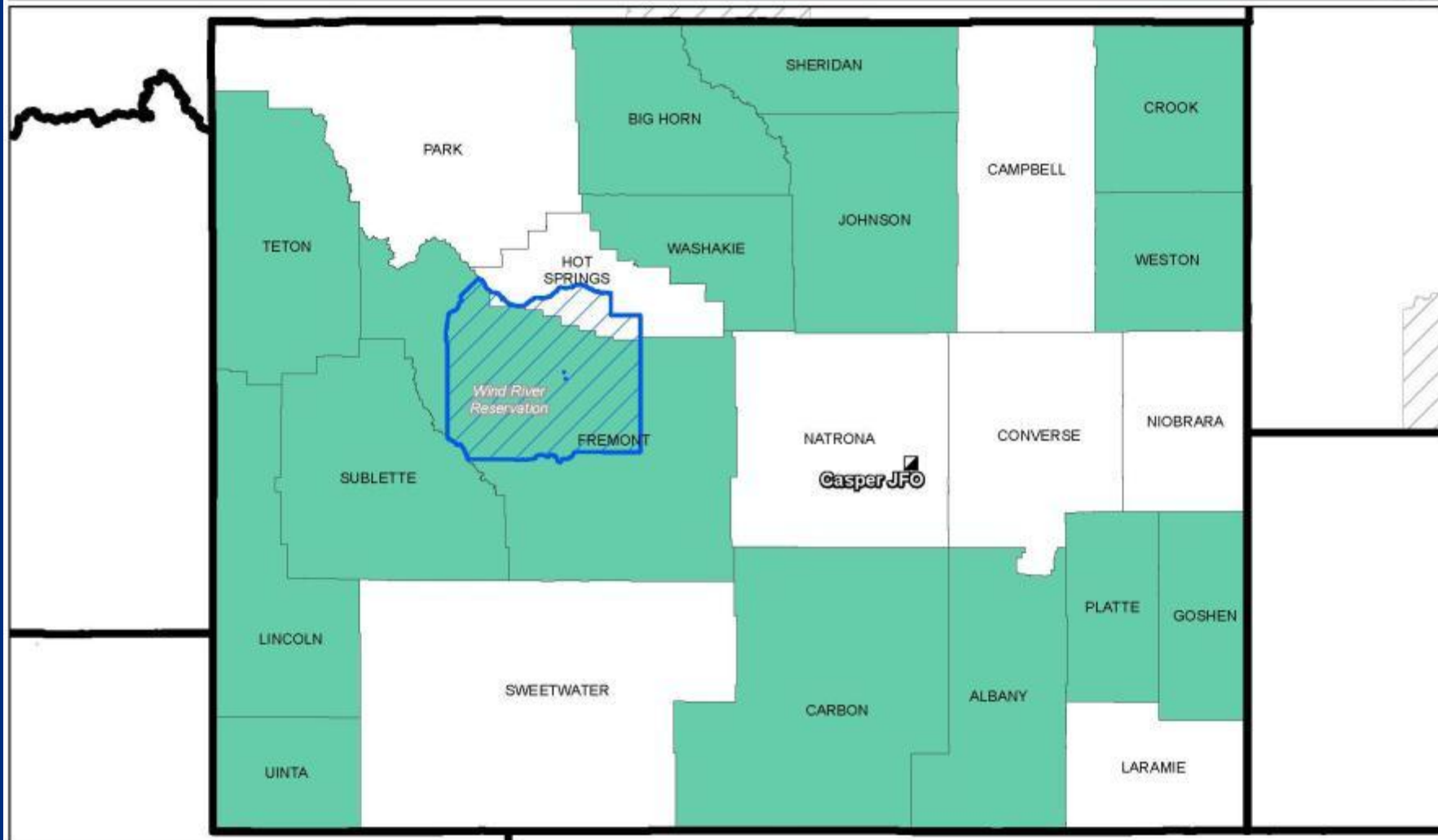


Name: noblesk
 Date Created: 08/3/2011
 Source: HSP Gold & FEMA Region VII data



FEMA-1996-DR-MONTANA

- Individual Assistance Registrations: 3,614 as of 12/09/11
- Public Assistance Estimated Damage: Projected at \$60,000,000 in FEMA Eligible Costs
- Federal Share at 75% \$45,000,000



 Casper JFO**Designated Counties and Tribal Nations** Counties Designated for Public Assistance (15) Tribal Nations Designated for Public Assistance (2)

All counties and Indian Tribes in the State of Wyoming are eligible to apply for assistance under the Hazard Mitigation Grant Program

Name: nrobles

Date Created: 08/04/2011

Source: HSIP Gold & FEMA Region VIII data

90

Miles



FEMA-4007-DR-WYOMING

- Public Assistance Estimated Damage: Projected FEMA Eligible Costs \$7,000,000
- Federal Share 75% at \$5,250,000

FEMA Region VIII MRB Declaration Summary

- Individual Assistance Registrations: 15,656 as of 12/09/11
- Public Assistance Estimated Damage: Projected FEMA Eligible Costs \$418,000,000
- Projected Federal Share of \$358,500,000





FEMA



Presentations - Tribes



State Presentations:

Iowa, Derek Hill, Iowa Homeland Security

South Dakota, Jason Glodt, Office of the Governor

Kansas, Tracey Streeter, Kansas Water Office

Montana, Mary Sexton, Department Natural Resources
Conservation

North Dakota, Todd Sando, ND State Water Commission

Iowa's Missouri River Flood Recovery Coordination Task Force

Established to coordinate disaster recovery efforts of existing authorities

Working Groups

- Utilities (Iowa Utilities Board-IUB)
- Housing (Iowa Finance Authority-IFA)
- Economic Development (IA Dept Economic Development-IDED)
- Transportation (IA Dept of Transportation-IDOT)
- Agriculture (IA Dept of Agriculture and Land Stewardship-IDALS)
- Natural Resources (IA Dept Natural Resources-DNR)
- Health & Human Services (IA Dept Human Services-DHS)
- Interagency Levee (IA Homeland Security & Emergency Management-HSMED)
- Public Assistance (HSEMD)
- Hazard Mitigation (HSEMD)
- Communications (HSEMD Public Information Office-PIO)
- Education (IA Dept of Education)
- Private Sector (Safeguard Iowa Partnership)

Task Force Areas of Effectiveness

Interagency Levee Working Group (ILWG)

- Sub-working groups developed to address specific issues:
 - **Non-Federal Levee Inventory Group**-will combine existing information to identify and inventory non-federal levee locations, their characteristics, and entities responsible for operation and maintenance.
 - **Federal Levee Benefits Group**- will determine how those who benefit from federal levees (individuals, municipalities, businesses, etc.) currently contribute to their operation and maintenance and will generate options for how their contributions might be increased.
 - **Advisory Base Flood Elevation Group**- considering establishment of an Advisory Base Flood Elevation (ABFE) for DR-1998 that would be in effect until levees are reconstructed or final base flood elevations are determined.