



## JSTEC

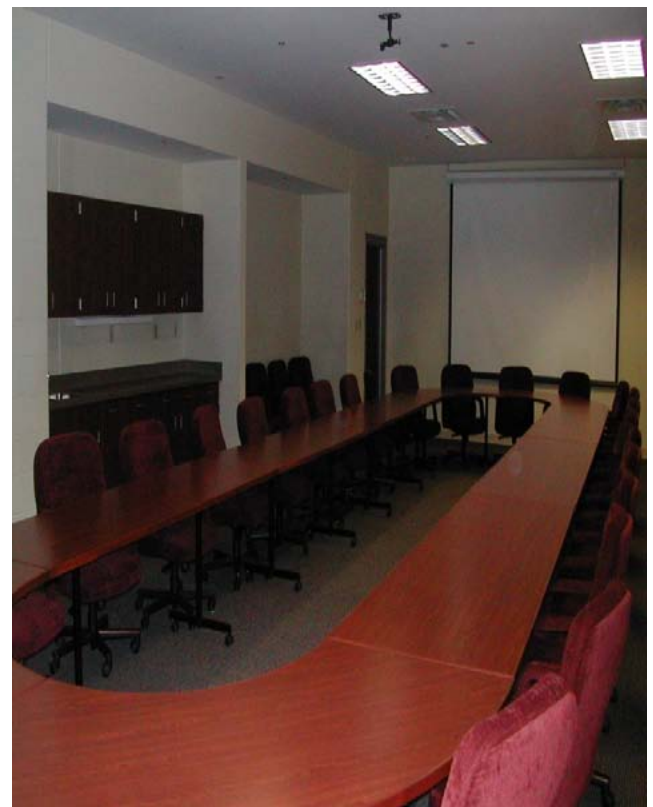
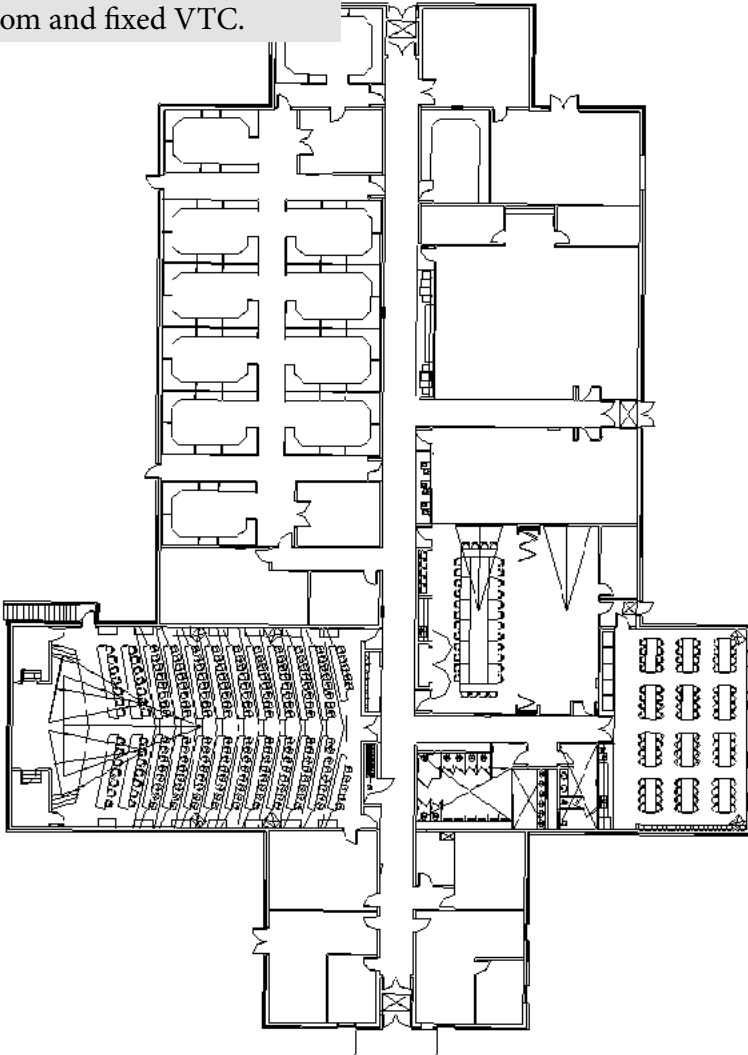
Includes:

6 Buildings - 60,000 SQ. FT. of reconfigurable exercise space

3 gravel pads for TOC setups with power and data and voice connectivity.

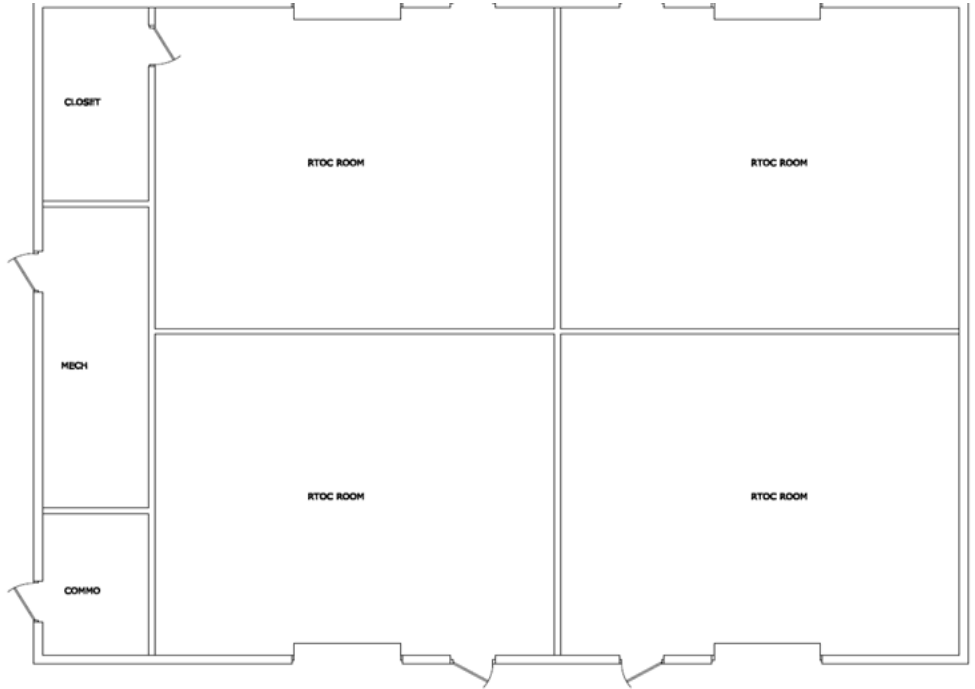
Concrete pad for COMMO and TOC setups/CPN also powered, to include data and voice connectivity.

725 - 25,000 Gross SQ. FT.  
Provides offices, 186 pax  
auditorium, classrooms,  
simulation cells, conference  
room and fixed VTC.



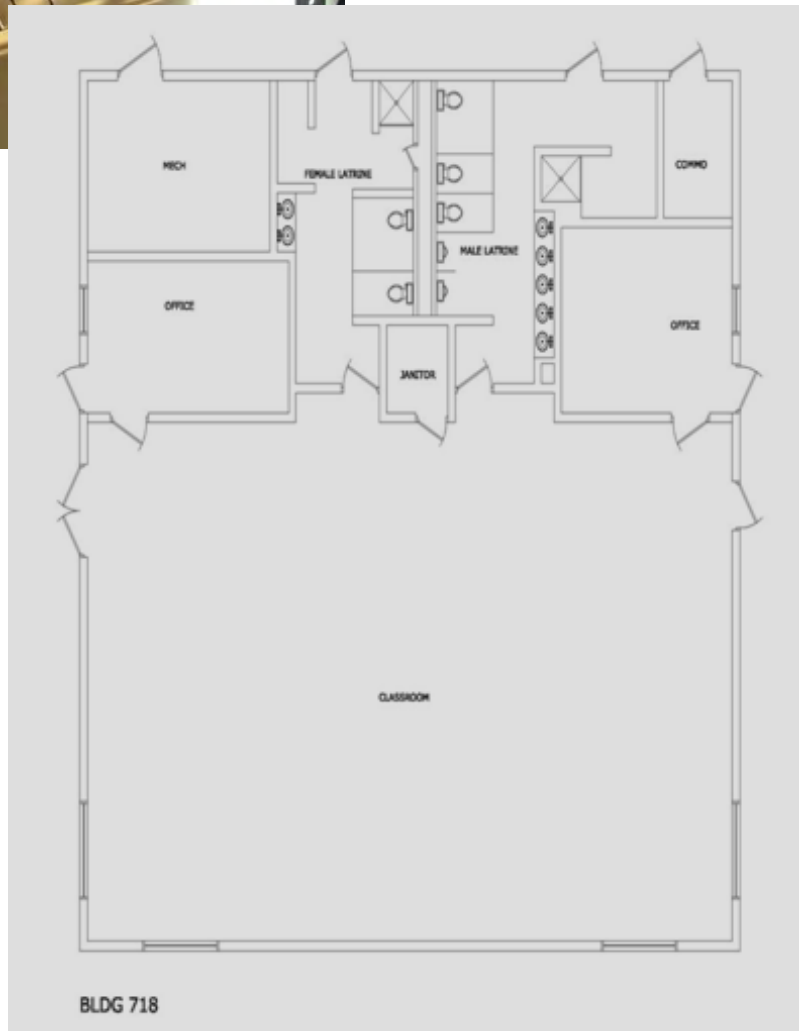


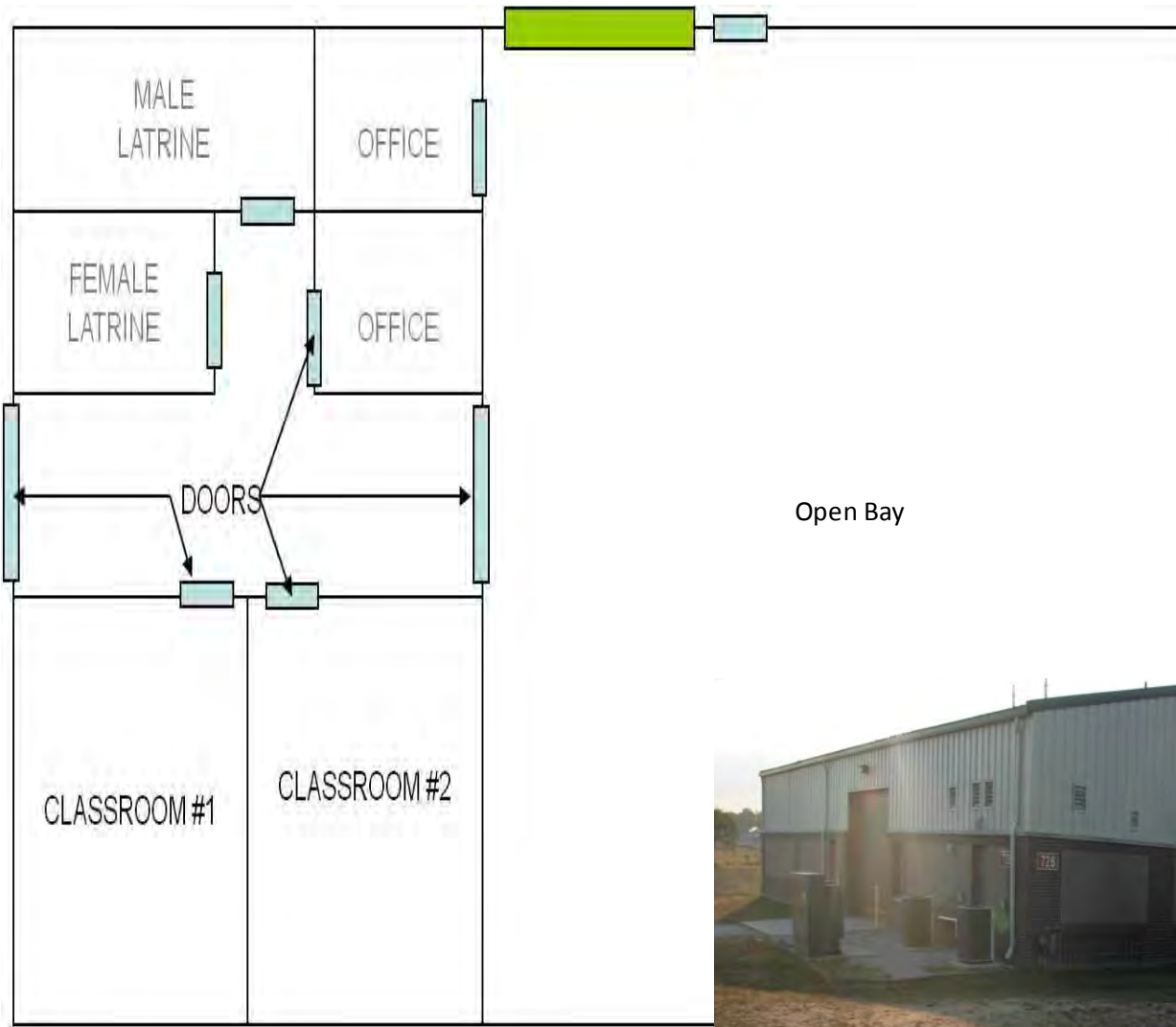
731- 3600 Gross SQ. FT. with 4x 900 Sq ft of BN-size TOC cells with power and data/voice. Standard configuration 40 pax per cell.





718 - 3500 SQ. FT.  
Open classroom area for  
90 pax, with an  
additional 2 offices for  
mission command space  
for exercise  
support.

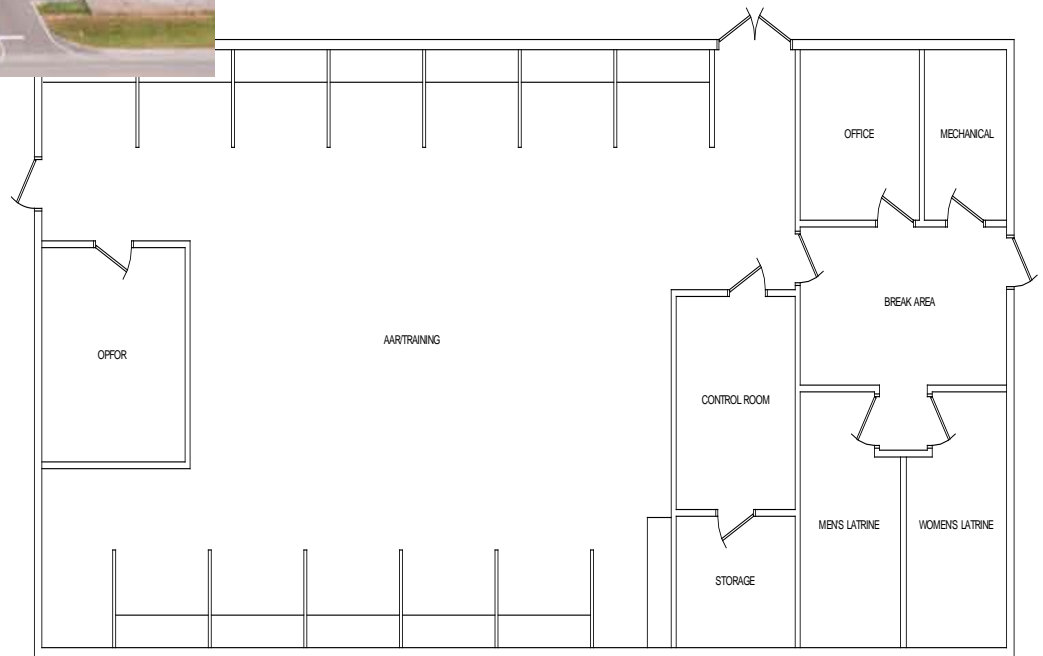




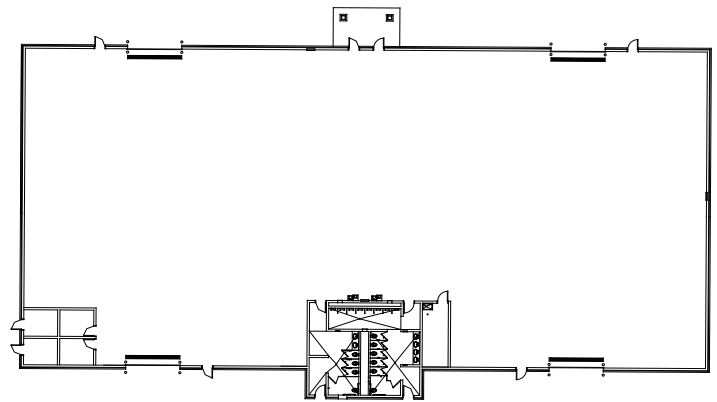
728 - 5,400 Gross SQ. FT. with 3,600 Sq. ft. of open bay that is flexible and configurable with 2 classrooms (20 pax each) and two offices. Standard configuration is 200 pax open bay.



719 - 3200 Gross SQ. FT.  
Provides additional mission command space for exercise support. Standard configuration approx 25 pax classroom - 3 offices.







722 - Provides 20,000 SQ. FT. of open space that is flexible and configurable