



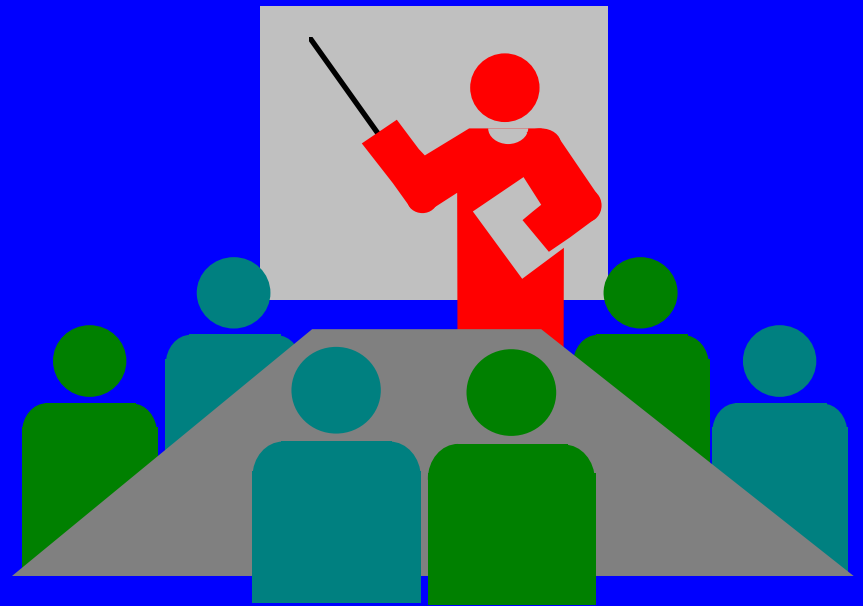
**Winter
Recreation/
Off-Duty Safety**

How to Prevent Mishaps



Risk Management - Five Step Process

- **Hazard Identification**
- **Assess Hazards**
- **Make Risk Decisions**
- **Implement Controls**
- **Supervise/Evaluate**



Scenario

In October Navy Family Housing occupants experienced first really cold day. Occupants shifted from a/c to heating system. The next day at 0750, wife's co-worker became concerned when she hadn't arrived at work. Co-worker made several unanswered calls and at 0900, drove to residence. There was no response to knocks despite both cars being in the driveway. At 1200, co-worker called base security, who entered residence with a key. A Sailor and his four dependents died from Carbon Monoxide poisoning.



1. Hazard Identification

Hazards

- **Missing Co Alarm**
- **Faulty Furnace**
- **Closed Fresh Air Make-up Vents**
- **Dirty/Clogged Filters**
- **Air Register Obstructed**
- **Blocked Chimney Flue**
- **Fuel Space Heaters**



2. Assess Hazards

Hazards

Severity/Probability

- Faulty Furnace
- Fresh Make-up Air Vent Closed
- Dirty/Clogged Air Filters
- Return Air Vent Obstructed
- Blocked Chimney Flue
- Defective Fuel Space Heaters
- Missing CO Alarm

Catastrophic/Likely To Occur

Catastrophic/Likely To Occur

Marginal/May Occur

Marginal/May Occur

Catastrophic/Likely To Occur

Catastrophic/Likely To Occur

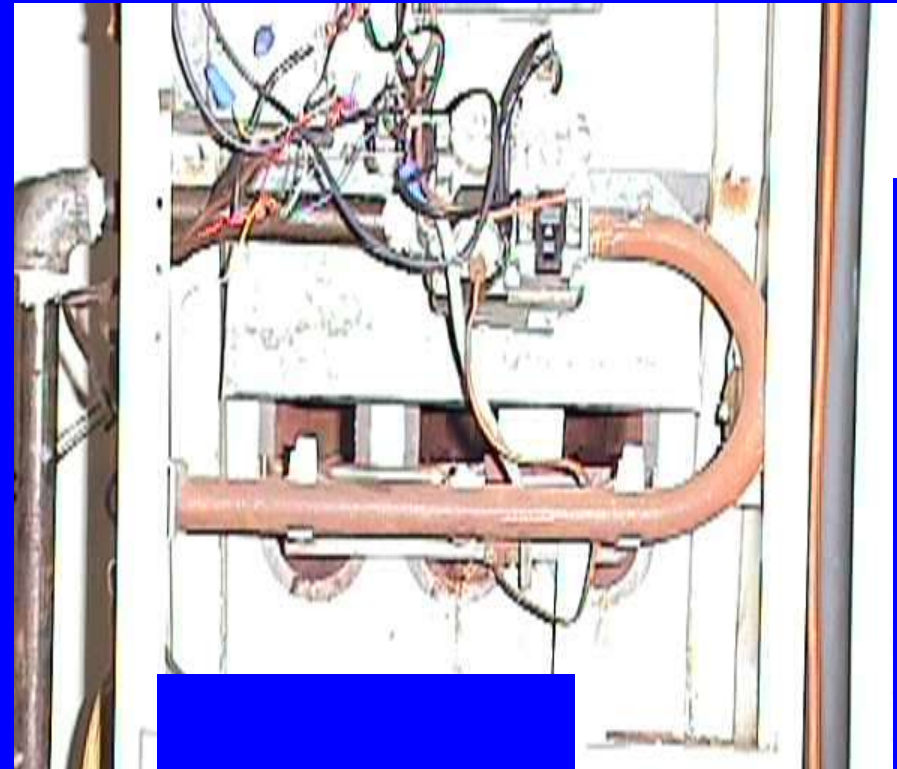
Catastrophic/Likely To Occur



3. Make Risk Decisions

Hazards

- **Missing CO Alarm**
- **Fresh Make-up Air Vent Closed**
- **Faulty Furnace**
- **Blocked Chimney Flue**
- **Defective Fuel Space Heaters**
- **Dirty/Clogged Air Filters**
- **Return Air Vent Obstructed**



4. Implement Controls

Hazards

- **Missing Co Alarm**
- **Fresh Make-up Air Vent Closed**
- **Faulty Furnace**
- **Blocked Chimney Flue**
- **Fuel Space Heaters**
- **Dirty/Clogged Air Filters**
- **Return Air Vent Obstructed**

Controls

Install Alarm

Establish Appropriate PM Schedule - QA Work

Disallow Use In Quarters

Change Filters Quarterly (Monthly For Pets)

Keep Furniture Away From Vents



5. Supervise

- **Housing inspector verifies alarm operation during occupant check-in/check-out - ensure return air duct not blocked - inform occupants on their responsibility to change air filters**
- **Implement policy to ensure that CO awareness is publicized prior to and during each heating system**
- **Annual fire department inspection of housing units to include proper maintenance and operation of CO alarms**



Eliminating Falls Around The Home

- **Light Stairways**
- **Non-Skid Backing On Rugs**
- **Trip Hazards Off Stairways**
- **Ladders Not Chairs For Reaching Objects**



Fire Safety In The Home

- **Practice Exit Drills**
- **Be Attentive When Cooking**
- **Keep Matches And Lighters Out Of The Reach Of Children**
- **Don't Overload Electrical Outlets**



Fireplace Safety

- **Get A Professional Check**
- **Do Not Use Flammable Liquids On The Fire**
- **Keep The Damper Open**
- **Use A Screen**
- **Make Sure Smoke And Co Alarms Are Working**



Kerosene Heater And Coal Stove Safety

- Check With Your Housing Office**
- Follow The Owner's Manual Guidelines**
- Use Fuel Appliances In Well Ventilated Areas**



Christmas Tree Safety

- **Check For Freshness**
- **Place It Away From Fireplaces And Radiators**
- **Before Mounting, Cut Its Base So It Can Absorb Water**
- **Check The Water Level Daily**



Decorations Need Extra Care

- **Approved Lights Only**
- **Frayed Wires And Broken Bulbs**
- **Flame-resistant Trimmings**
- **Going To Bed Or Leaving The House - Lights Off**



Keep The Magic In Holiday Parties

- **Snacks And Non Alcoholic Drinks**
- **Large Ashtrays For Smokers**
- **Provide Rides Home**



Hypothermia Kills

Head

**Lower
Torso**

**Under
Arms**




Snow Skiing Safety

- **Training**
- **Safety Equipment**
- **Layers Of Clothing**
- **Ski Regulations**
- **Stay On Marked Trails**
- **Ski Within Your Limits**
- **Alcohol And Skiing Don't Mix**



Snowmobile Safety

- 
- **Training**
 - **Follow Owners Manual Guidelines**
 - **Safety Helmet With Chin Strap**
 - **Eye Protection**
 - **Thin Layers Of Clothing, Boots And Gloves**
 - **No Alcohol**

Skating On Ice Can Be Fatal

- **Skate At Commercial Rinks, If Possible**
- **Use Supervised Areas With Ice Four Inches Thick**
- **Ensure Rescue Ropes And Ladders Are Available**
- **Skate With A Friend**



Clearing Snow Safely



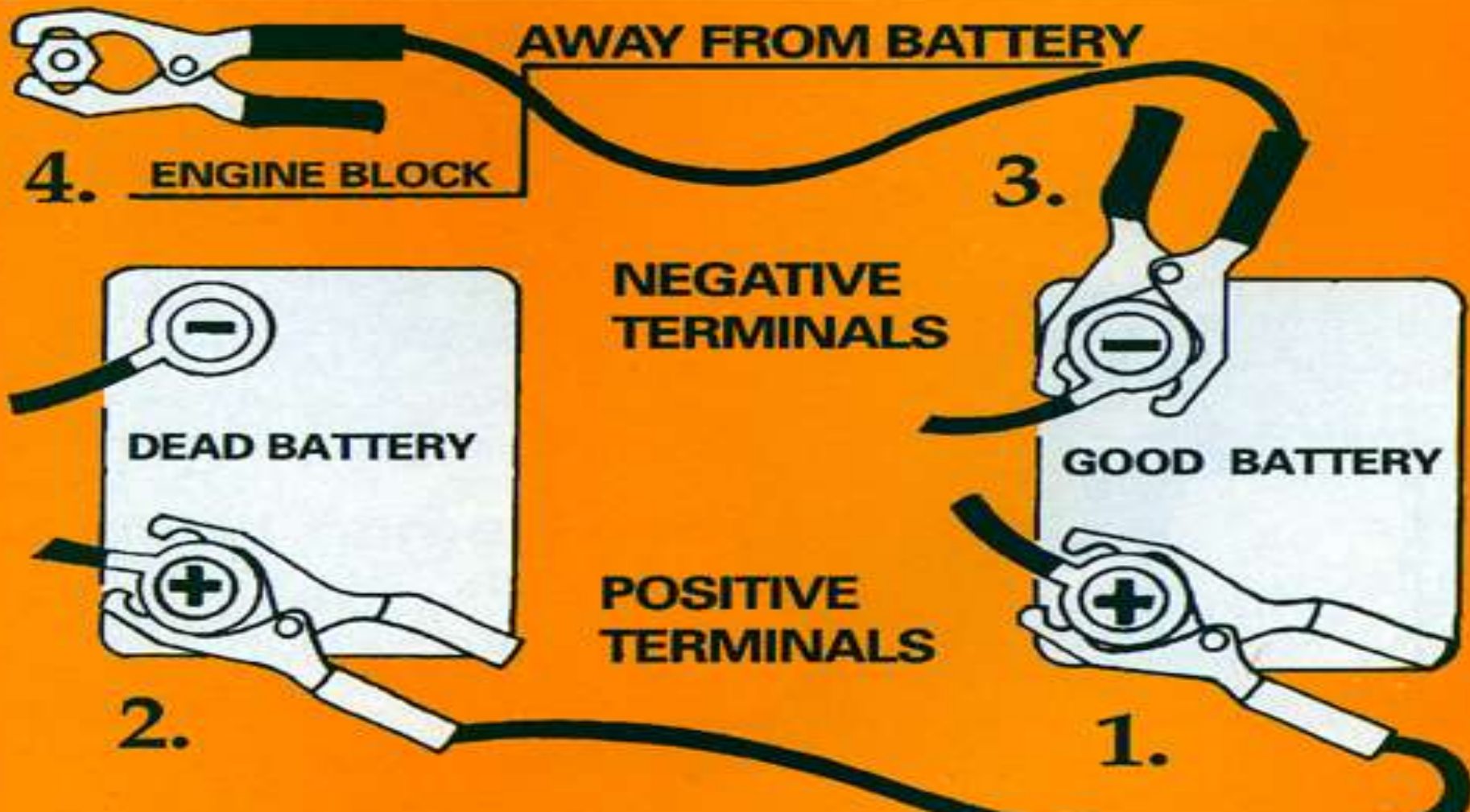
- **Use A Snow Shovel With A Long Handle**
- **Lift With Leg Muscles, Not The Back**
- **Know Your Limits**
- **Do Not Smoke Or Drink Alcohol**

Chainsaw Safety

- **Follow Manufacturer's Recommendations**
- **Training**
- **PPE**
- **Anti-Kickback Devices**
- **Cut Between Knee And Waist**
- **Safe Refueling**



How To Jump-Start A Vehicle





The End