



**Employment with NAVFAC Far East –
The Opportunity and Adventure of a Lifetime!**

Supporting the 21st Century Navy



Geography

- 1/2 of world's surface

Demographics

- 56% of world's population

SECDEF Statement (June 2012): "By 2020 the Navy will re-posture its forces from today's roughly 50/50 percent split between the Pacific and Atlantic to about a 60/40 split between those oceans."

**'REBALANCE
TO THE
PACIFIC'**

YOU can be a part of this critical national effort at NAVFAC Far East!

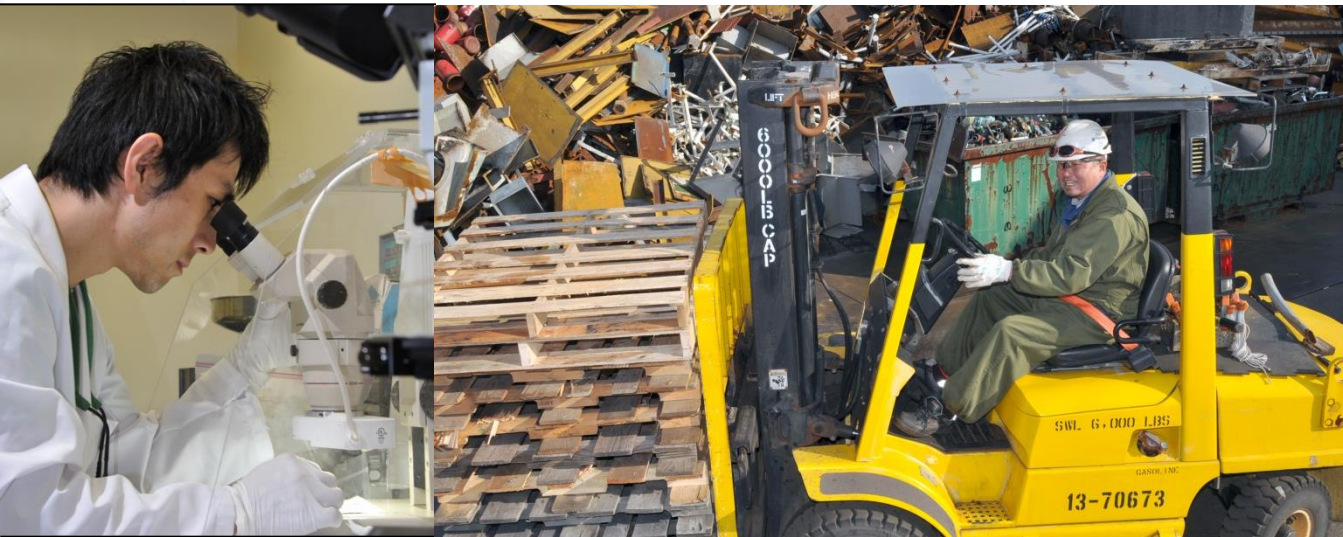
Economics

- 33% of U.S. two-way trade
- 26% of Gross World Product (GWP)

Security

- The 6 largest militaries

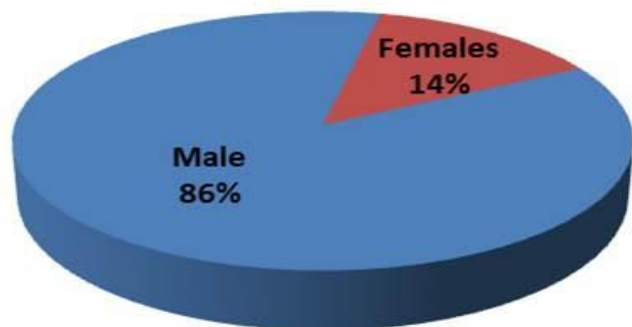
What Kind of Work Do We Do?



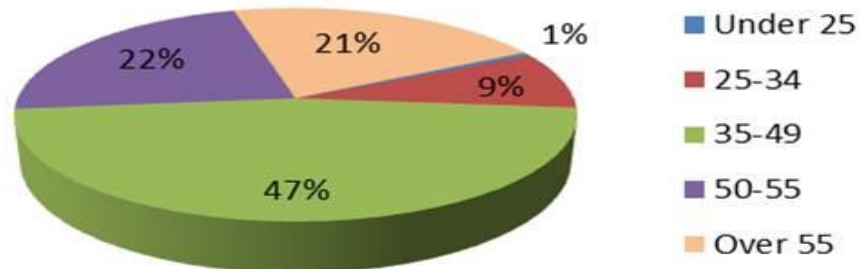
Command Demographics



Gender

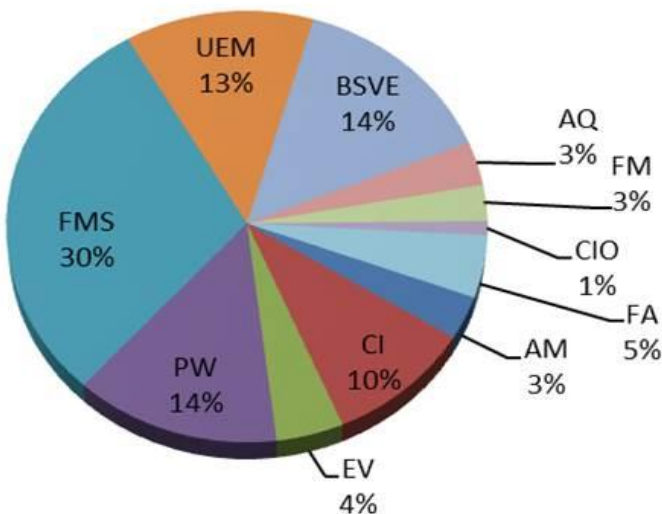


Age

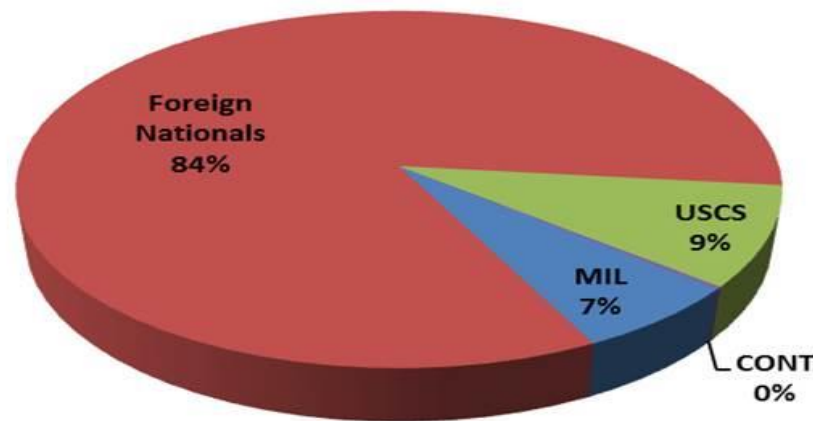


Average age = 48

Communities



Our People



2041 On Board as of Oct 2015

3 Navy Regions
4 Countries
>\$20B PRV of Real Property
10 Installations



Naval Facilities Engineering Command Far East proudly supports Navy, Marine Corps and other Dept. of Defense activities in the Far East Region. We provide best-value facility solutions and services to Navy and Marine Corps bases at Yokosuka, Atsugi, Sasebo, Misawa, Iwakuni, Okinawa, Diego Garcia, Chinhae Korea, Singapore and throughout the Far East



YOKOSUKA & ATSUGI

Located in central Japan, close to Tokyo

Bullet train (shinkansen)



The Tokyo/Yokohama metropolitan area is the world's largest, with 33 million people



Mt. Fuji, symbol of Japan, is just 2 ½ hours away and can be seen on clear days



Climb Mt. Fuji, golf at Atsugi, go deep-sea fishing or explore Tokyo!



The famous Daibutsu (Giant Buddha) statue in Kamakura is just minutes from Yokosuka



Asakusa Shrine, Tokyo

Located on the southern Japanese island of Kyushu, Sasebo is a seaside city with plenty to see and do nearby

Sasebo

The 99 Islands off Sasebo, a great place for watersports



See Peace Park

Play with spider monkeys at Nagasaki's BioPark



The city of Nagasaki is 90 minutes from Sasebo

Nearby shopping includes Costco and IKEA in Fukuoka, the TOSU Premium Outlets in Saga and a brand new mall in Sasebo.



The Softbank Hawks play 90 minutes away in Fukuoka.

Located in northern Japan - an outdoor paradise. Enjoy mountains and lakes year-round, the colors in the mountains during the fall, and some of the best winter sports conditions in Japan!



Misawa

The annual Nebuta festival in Aomori City is one of Japan's most famous celebrations



The beautiful view of Lake Towada



Oirase Gorge

One of the many ski resorts in the area with plenty of snow



Okinawa



Japan's southern island paradise has beautiful beaches and a colorful and unique culture



Shuri Castle – one of Okinawa's many World Heritage Sites

Kabira Bay - located on the north coast of Ishigaki Island, part of Iriomote-Ishigaki National Park



Churaumi Aquarium



Enjoy water sports like sea kayaking



Eisa - traditional Ryukyuan summer dance

**Iwakuni
Castle**



Iwakuni



First built in 1673, the Kintai Bridge is the most famous landmark in the area.

Nestled in the countryside 25 miles west of Hiroshima, Iwakuni is well known for its Kintai Bridge, one of the most famous in Japan, and only 45 minutes from the UNESCO World Heritage Site of Miyajima

Miyajima Island floating gate



Cable car, Hiroshima



**Hiroshima's
Shukkeien
Garden**

Korea



“Land of
the
Morning
Calm”

Namdaemun Gate, Seoul



Namdaemun Market



Korean food – delicious and healthy!



Mt. Halla volcano, Jeju Island



Bulguksa Temple,
Gyeongju

Established as a trading post in 1819 and settled by Chinese, Indian, Malay and Arab immigrants, Singapore is a vibrant, ultramodern city state with something for everyone



Singapore



One of the world's premier shopping districts is found on Orchard Road.



Just 15 minutes from the city center and the famous Merlion statue (above), Sentosa Island is a world-class resort with beaches, entertainment and attractions for the whole family.



Like to eat? You will love the many food markets with a wide variety of delicious dishes!

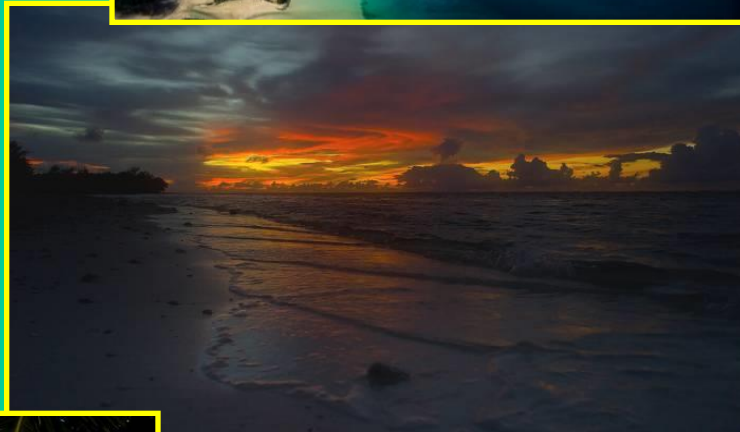
Located in the Indian Ocean, the 'island' is actually one of the most pristine coral atolls in the world



Diego García

If you like marine sports, fishing and year-round tropical weather, this is the place for you!

A typical DG sunset!



Is it a postcard? No, just one of DG's beautiful beaches...



Overseas Benefits



Paid/Reimbursable Housing

Japan, Korea and Singapore: Receive Living Quarters Allowance, utilities allowance and post allowance to live off-base.

Diego Garcia, waterfront 3-story apartments (unaccompanied tour).

Additional Annual Leave Accrual

Maximum accrual of 360 hours of annual leave (vice 240 hours earned stateside).

Home Leave Accrual

Japan and Korea: Earn 5 days of Home Leave per year

Diego Garcia and Singapore: Earn 10 days of Home Leave per year

Environmental Morale Leave (EML)

Japan and Korea: Two unfunded EML trips per year which allows space available travel on government flights as a Category II priority while on annual leave.

Singapore: One funded EML (FEML) trip after 24 consecutive months.

Overseas Benefits (continued)



High-Quality Medical and Dental Care

Japan, Korea and Diego Garcia: U.S. Naval Hospitals or Branch Clinics available; local medical and dental care is also an optional.

Singapore: Government-provided medical insurance plan enables local medical care, which is comparable to U.S. medical care, plentiful and highly efficient.

Access to Travel

Japan and Korea: Extensive train networks make traveling quick and convenient. Travel by car/train/plane throughout Asia relatively easily and inexpensively

Convenient travel hub to destinations throughout Asia.

MWR / Commissary / Exchange Privileges

Civilians have full use of MWR, Commissary and Exchange facilities.

Purchase Gasoline at Similar U.S. Prices

Typically much less than local prices.

How Much Will I Make?



Calculations for GS-12 STEP 5 (with spouse and two children)

Benefits	Far East	Washington DC	San Diego CA
Base Salary with Locality Pay (LP)	\$70,381 0% LP	\$87,821 24.78% LP	\$87,786 24.73% LP
Living Quarters Allowance (LQA)	\$45,870	\$0	\$0
Post Allowance (Tax Free)	\$7,320	\$0	\$0
Total	\$123,571	\$87,821	\$87,786
Delta		-\$35,750	-\$35,785

DSSR Allowances website – http://aoprals.state.gov/content.asp?content_id=231&menu_id=92

How Much Will I Make?



Calculations for GS-13 STEP 5 (with spouse and two children)

Benefits	Far East	Washington DC	San Diego CA
Base Salary with Locality Pay (LP)	\$83,694 0% LP	\$104,433 24.78% LP	\$104,392 24.73% LP
Living Quarters Allowance (LQA)	\$47,080	\$0	\$0
Post Allowance (Tax Free)	\$8,220	\$0	\$0
Total	\$138,994	\$104,433	\$104,392
Delta		-\$34,561	-\$34,602

DSSR Allowances website – http://aoprals.state.gov/content.asp?content_id=231&menu_id=92

Be Prepared For Upfront PCS Costs



Planning ahead for move-related expenses will help to reduce the financial stress of a PCS move!

- **Renting your state-side residence**
- **Preparing/selling your vehicles**
- **PCSing with pets**
- **10 days of Temporary Quarters Subsistence Expenses (TQSE) for lodging and meals**
 - **Before departing state-side**
- **Up to 90 days of Temporary Quarters Subsistence Allowance (TQSA) for lodging and meals**
 - **Reimbursement claim submitted every 30 days**
 - **Reduced allowances every 30 days**
- **Purchasing a vehicle and related registration/insurance fees**
- **No Locality Pay for overseas locations**
- **No Post Allowance until living off-base**
- **30 day salary advance to pay for off-base rental expenses**

Where Will I Live?



Most Civilians live 'On the Economy'

Stand Alone Single Family Homes – May feature a small garden or yard, and usually a designated parking space.

Apartments – Mid-rise or high-rise apartments usually found in the cities or larger towns.

Base Housing – Employees with family may be authorized to live in Family Housing

Housing Welcome Centers / Private Agents

- Assist with showing, translation, lease signing
- Assist with electricity, phone, Internet and gas hook-up and billing

- In Singapore, letter of employment is provided to English-speaking agents by employees; employees make arrangements on their own, working with these agents



Japanese off-base home



Base townhomes, Yokosuka



A Japanese apartment complex



A 3-bedroom bungalow in Sembawang, Singapore

Where Will I Get Healthcare?



U.S. Naval Hospital Yokosuka



USNH Yokosuka **Branch clinics**

Atsugi
Chinhae
Diego Garcia
Hario
Sasebo

Misawa, Japan
Misawa Air Base Hospital

Singapore
Employees are provided with U.S. government insurance plans for medical and dental care. Singaporean medical care is highly efficient, with world-class facilities and providers are plentiful; quality of care is comparable to that found in the U.S.

U.S. Naval Hospital Okinawa



Primary clinical services provided by Naval Hospitals:

- Family Practice
- Internal Medicine
- Pediatrics
- Behavioral Health
- Optometry/Ophthalmology
- General Surgery
- Orthopedics
- Obstetrics/Gynecology
- Emergency Medicine
- Physical Therapy
- Occupational Health
- Preventive Medicine
- Health Promotions
- Laboratory
- Pharmacy
- Radiology
- Local doctors/hospitals are also an option

Dental

- Off base
- Some U.S.- trained, English-speaking

How Are The Schools?



In Japan and Korea

- Free fully accredited Department of Defense Education Activity (DoDEA) elementary, middle, and high schools available with SOFA sponsorship, whether living on or off-base. Buses pick up off-base students at most locations.
- Extensive high school Far East Athletics program (baseball, basketball, cheer, cross country, football, JROTC, soccer, softball, tennis, track and field, volleyball, wrestling)
- Many opportunities to experience Asian culture off base, such as field trips to historical sites and museums, host nation school visits and participation in local holiday observances and events

In Singapore

- There are no DoDEA schools in Singapore, but multiple accredited international schools are available.
- Enrollment paid for by DODEA.
- Singapore regularly ranks among the world's top education systems.

What About Our Pets?



Pets can be brought to Far East locations, with the exception of Diego Garcia. Regulations and requirements vary by location, so please check the following resources for details:



- Japan

http://www.usarj.army.mil/organization/vet/import_d.aspx

- Korea

<http://www.korea.amedd.army.mil/veterinary/index.html>

- Singapore

http://www.cnrc.navy.mil/content/dam/cnrc/cnrc/cnrc_hro_yokosuka/cnrc_hro_yokosuka_services/Handbook_Singapore.pdf

(Pets Section, Pgs 13-15)

What To Do When Not Working?



Travel/Explore

- Easy travel throughout Japan by trains and buses – one of the world's best public transportation systems
- Frequent tours and trips are available through base travel agencies and MWR
- Explore uniquely Asian cultures at the source – temples, shrines, museums, castles, arts and crafts exhibits, cultural fairs, historic sites, local events...there is something to interest everyone!

Recreation

- Like the outdoors? You can golf, camp, hike, ski, snowboard, bike, run, rock climb, enjoy some of the world's most beautiful beaches, boat, kayak, scuba dive, surf, windsurf, etc. Base Outdoor Recreation facilities offer guided trips to many of these activities, as well as providing lessons, renting, selling and repairing your gear.

Eat

- Some of the world's best variety of delicious food is found in the Far East. You can get any food in the world in the major cities, and locally, choose from many varieties of Japanese, Chinese, Korean, Indian, Thai, Italian, French, etc. Bring your appetite!

Shop

- There are an amazing variety of shopping experiences...

We Are NAVFAC Far East



...a diverse and highly professional, skilled team that thrives on the toughest challenges in a demanding environment, and getting the job done on time and done right. We are leaders. If you want to challenge and develop yourself professionally and personally, serve your country, strengthen its alliances and live in a diverse and dynamic region, we want you to join our team!

For the Opportunity and Adventure of a Lifetime, consider a tour with NAVFAC Far East!



In Their Own Words...



Derance Broadnax
FM&S PLC
Yokosuka, Japan

“OCONUS duty is very different from CONUS duty in that you are co-located with the mission and can see the results of your work first-hand. This is a very rewarding experience and being able to work in tandem with our Japanese, Korean and other allies / global partners to accomplish the PACOM mission makes it even more special. This is my 2nd tour in Japan and the people here are absolutely wonderful. US civilians have a collateral role as local ambassadors and play an important role in maintaining the harmonious relationship with our Host Nations and the United States. It is truly an honor to serve and advance the US interests / mission abroad.”



Katie Stevenson
Installation Planner
PWD Yokosuka, Japan

“If you have an open mind and a desire for adventure Japan is the place to be. There is always something new to see, do, taste, or experience both on and off base. Weekend trips can be a train ride away, or a quick plane ride to a new nearby country. The work is challenging and rewarding. You will never work with people as knowledgeable, helpful, and motivated as the people here, they work hard and play hard. It is one of the best decisions I have made for my career and my family.”



Joddie Adkins
BSV&E Branch Manager
PWD Sasebo, Japan

“Being in Japan offers the best of both worlds. PWD Sasebo is a great place to work and the opportunity for my family to dive into the Japanese culture is available every weekend, with events and festivals year-round. Many people ask themselves why they didn't come to Japan earlier. I know I did.”



Erin Hoe
Contract Specialist
PWD Atsugi, Japan

Working in Japan has been an awesome experience. The work is fast paced and challenging. The weekends and holidays are fun-filled with eating delicious food, shopping in Tokyo/Yokohama, snowboarding, sightseeing tours, and going to spirited baseball games.”



Shane Schmidt
Supervisory Contract Specialist
PWD Singapore

“It only took a few days to realize that moving my family to Singapore was the right decision. PWD Singapore is a dynamic, multicultural office that is mission-focused to support our Sailors, Airmen and Marines. Singapore is a major logistical hub and you can reach any part of Southeast Asia in less than four hours.”

Want More Information?



USAJOBS	https://www.USAJOBS.gov
Yokosuka	https://www.cnic.navy.mil/Yokosuka/index.htm
Atsugi	https://www.cnic.navy.mil/Atsugi/index.htm
Sasebo	https://www.cnic.navy.mil/Sasebo/index.htm
Okinawa	https://www.cnic.navy.mil/Okinawa/index.htm
Korea	https://www.cnic.navy.mil/Chinhae/index.htm
Singapore	https://www.cnic.navy.mil/Singapore/index.htm
Diego Garcia	https://www.cnic.navy.mil/DiegoGarcia/index.htm

1. Put your resume in USAJOBS... select geographic preferences
2. Apply for specific announcement in USAJobs
3. Email or call Business Line/Support Line Coordinators for specific information about vacancies, or visit our public website:

https://www.navfac.navy.mil/navfac_worldwide/pacific/fecs/far_east/about_us/Current_Job_Vacancies.html

Business Director	Dave Gober	David.Gober@fe.navy.mil	315-243-7770
DOPS	Tim Cole	Timothy.Cole@fe.navy.mil	315-243-9247
AQ SLC	Ken Kitahara	Kenneth.Kitahara@fe.navy.mil	315-243-9905
AM BLC	Brett James	Robert.James@fe.navy.mil	315-243-5425
CIO SLC	Venita Hollinger	Venita.Hollinger@fe.navy.mil	315-243-7156
EV BLC	Dave Forsythe	David.Forsythe@fe.navy.mil	315-243-2525
FM SLC	Robert Johnson	Robert.I.Johnson@fe.navy.mil	315-243-5654
CI BLC	Russ Mattson	Russell.MattsonI@fe.navy.mil	315-243-9498
PW BLC	Tim Bacon	Timothy.Bacon@fe.navy.mil	315-243-5407

Additional Family Information

An Adventure For The Whole Family



Bases have fun and frequent activities for younger kids through Youth Centers and Youth Sports such as games, fairs, petting zoos, magic shows, book clubs at the library, etc. For older kids (11 and up) there are Teen Centers, skate parks and concerts, paintball courses, rock climbing, camping, etc. And for both age groups, an extensive Youth Sports program provides kids with opportunities to participate in a variety of sports throughout the year.

School trips off base also give kids the opportunity to experience Asian cultures, even as they attend American schools. And, there are always plenty of MWR-sponsored local tours and fun events for the whole family, including concerts, entertainers, theme parks, hiking, skiing, snowboarding and sledding trips, Japanese hot springs/baths, temples, castles, historical and cultural sites, and trips around Asia through base travel agencies. You may also be eligible to use free Space Available military flights.

In Korea, why not take the family to explore the Korean War National Museum in Seoul, Korean Folk Village or Cheju Island? In Singapore, the Singapore Zoo, the Night Safari Tour and Sentosa Island (where you can ride a cable car with great views of the city, play in the Fantasy Land water park, or enjoy thrills at Universal Studios Singapore) are close by.

While there are some differences between MWR programs, those found on bases are very similar to the following examples from Yokosuka, Atsugi, Sasebo and Diego Garcia...

How's The Shopping?



Commissaries and Exchanges:

These vary in size, but are located at each installation, with a comprehensive selection of many of the same stateside items and foods you are used to.



In Town: Shopping runs the gamut from ultra-modern shopping complexes and malls to local markets and stands. Shopping is one of the most exciting aspects of an overseas tour! Some of the freshest fruits, vegetables, seafood and meats can be found at department stores and shops in your neighborhood. Tokyo's Akihabara shopping district is world-renowned for electronics; Singapore and Seoul are also shopping meccas.



Base Bazaars: Asian furniture and handmade crafts such as Persian carpets, artwork, clothing, and other items at reasonable prices you won't find stateside...unique items to collect during your tour and take back home with you!



CHILD & YOUTH PROGRAMS

CHILDCARE

- Child Development Center - NAEYC Accredited
(National Association for the Education of Young Children)
- Child Development Homes
- Hourly Care

SCHOOL AGE CARE (Grades K-3)

- After School Care - COA Accredited (Council on Accreditation)
- Boys and Girls Clubs of America Programs
- 4-H Programs
- Summer Camps

TEEN & YOUTH CLUBS (Grades 4-12)

- Music Studio
- Video Games
- Boys and Girls Clubs of America Programs
- Summer Field Trips





YOUTH SPORTS

NAYS Affiliate (National Alliance for Youth Sports)

- Baseball
- Basketball
- Cheerleading
- Flag Football
- Golf Clinics
- Gymnastics
- Soccer
- Summer Swim Team
- Tennis Lessons
- and much, much more!*

**VOLUNTEERS
ALWAYS
WELCOME!**

COMMUNITY CENTER

YOKOSUKA • IKEGO • NEGISHI

- Japanese Language
- Japanese Cooking
- Japanese Arts & Crafts
- Various Dance Classes
- Various Music Classes
- Martial Arts Classes

YOKOSUKA HOBBY MART

- Party Supplies
- Arts and Crafts Supplies





Atsugi Golf Course



- 24-Hour Lit Driving Range
- Golf Course Restaurant

- Pro Shop
- Golf Clinics and Lessons

264-3709

