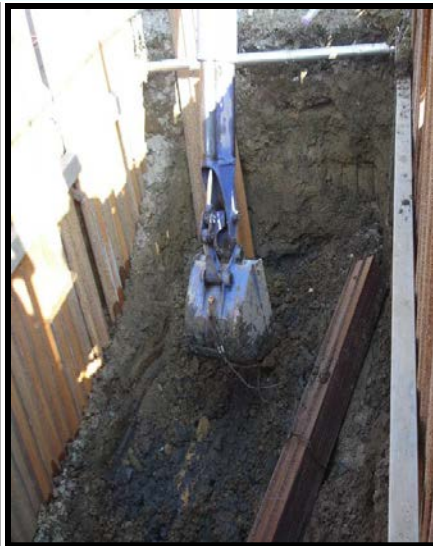


# Contractor Near Miss Toppled Excavator



## Activity

A contractor was using an excavator to lift sheet piles into an excavation. As the boom for the excavator was extended to place a beam in the excavation, the lifting load capacity for the excavator was overloaded causing the excavator to topple forward until the bucket landed in the bottom of the excavation.



## Direct Cause

Improper use of equipment. Excavator was not designed to be used as weight handling equipment.

## Indirect Cause

Operator was not licensed to operate excavator as a crane.

## Lessons Learned:

- Document, review, and post P1 “Certificate of Compliance” crane documentation IAW contract specifications.
- Use the right equipment for the job or activity.
- Proactive safety oversight by Contractor and Government personnel IAW contract specifications and BMS processes