

Contractor Serious Mishap

Fall From Heights



Location of work area and point of fall.

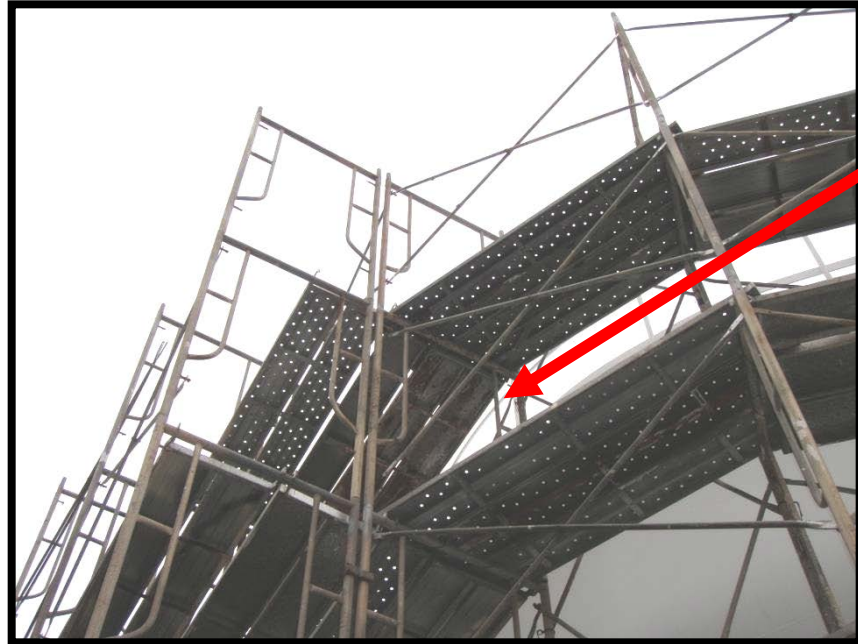


Unsecured cross bracing at point of fall

- **Injury:** Male Contractor Employee in Coma over 60 days
- **Activity:** Workers were assembling a scaffold work platform around fuel tank. While allowing access for co-worker, victim stepped on outboard side and fell through an unsecured cross brace approximately 18 ft. (5.4 m) to ground.
- **Direct Cause:**
 - Failure to attach, and maintain attached at all times, personal fall arrest system while working at heights
- **Root Cause:**
 - Safety culture and workforce mindset in an overseas environment.
- **Lessons Learned:**
 - Erection, moving, dismantling, or altering of work platforms shall be under the supervision of a Competent Person in accordance with EM 385-1-1, Safety and Health Requirements Manual, Paragraph 22.A.05
 - Educating and mentoring contractors on EM 385-1-1 requirements shall remain a priority until demonstrated proficiency across entire contractor workforce.

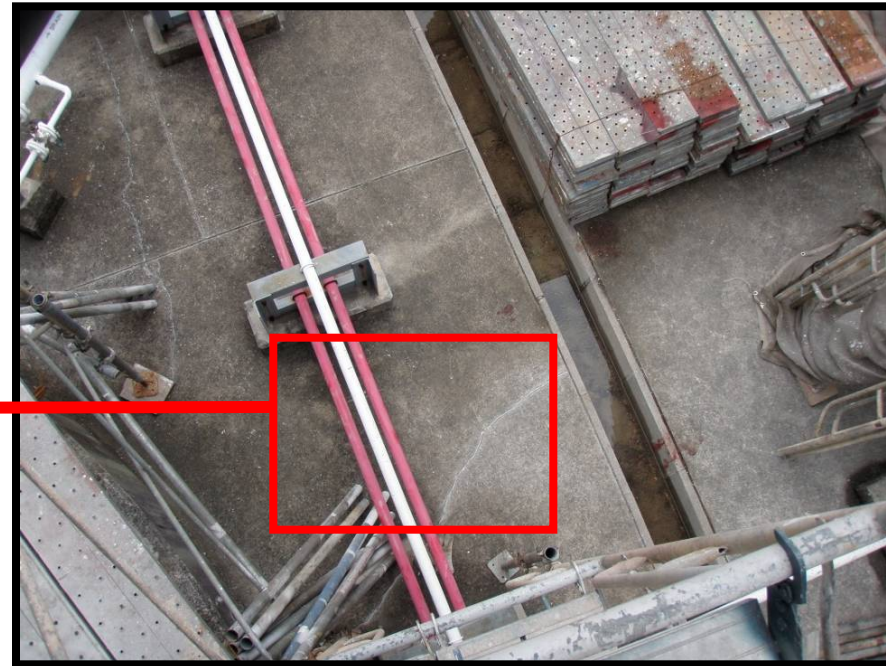
Contractor Serious Mishap

Fall From Heights



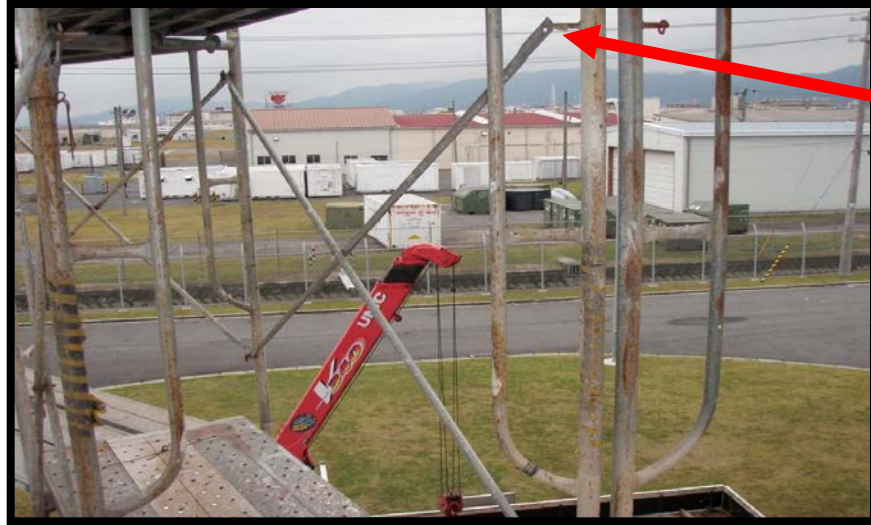
Approx. location of fall point looking up from the bottom of scaffolding.

Approx. location of fall landing area from fall point looking down 18 ft (5.4 m).



Contractor Serious Mishap

Fall From Heights



**Unsecured "X" bracing
at the point of the fall.**



What can go wrong?

What can I do about it?

If I can't do anything about it, whom do I tell?