



Post Fielding Support Analysis (PFSA)

Dec 2012



User Defined System View

The screenshot shows the 'Post Fielding Support Analysis - PFSA' web application. The interface includes a navigation menu on the left with sections like 'Favorites', 'PFSA Reports', 'Metric Analysis', 'View Results', 'View TBM Results', and 'Tools'. The main content area displays a '2004 Reset Chinooks' system view, showing system selection criteria and a 'Select System' button. A table lists system items, including 'Aviation - Rotary Wing' with sub-items 'BLACKHAWK' and 'CHINOOK', and a specific item '010883669 RCD HCPTR C&G TRANS CH47D'. A 'Serial Numbers' table is also visible, with a 'Compare By' dropdown menu set to 'None'. Three yellow callout bubbles provide the following information:

- 1. User defined System Views.** (Points to the Favorites menu)
- 2. System View by Model.** (Points to the '2004 Reset Chinooks' system view)
- 3. System View defined by Family, End Item or Serial Number.** (Points to the system item list)



User Defined System View

http://niobe.logsa.army.mil:9009/pfsadev/devIndex.jsp - Microsoft Internet Explorer provided by LOGSA

File Edit View Favorites Tools Help

Back Forward Stop Home Search Favorites Media

Address http://niobe.logsa.army.mil:9009/pfsadev/devIndex.jsp Go Links >>

Post Fielding Support Analysis - PFSA

Feedback Help Logout

Favorites

- System Views
 - 2004 Reset Chinooks
 - Blackhawk A Model
 - Blackhawk A and L Model Comparison
 - Blackhawk Family
 - Blackhawk L Model
 - Chinook D Model
 - Chinook Tail Nos w/ New Engines
 - FMTV 2 1/2 Ton Family
- PFSA Reports
- Metric Analysis
- View Results
- View TBM Results
- Tools
 - Add System View
 - Manage Criteria/System Views
 - Item Browser
 - Ad Hoc Query
 - Contact Information

Blackhawk A and L Model Comparison

System Selection = Aviation - Rotary Wing, Compare by End Item
System = BLACKHAWK - HCPTTR UTILITY UH-60A

System = BLACKHAWK - HELICPTR UTIL UH-60L

Save System View
Delete System View

Select System

Back

Aviation - Rotary Wing

- BLACKHAWK
 - 010350266 RSA HCPTTR UTILITY UH-60A
 - 012984532 RSM HELICPTR UTIL UH-60L
- CHINOOK

Serial Numbers

Serial Number	System
012984532	RSM HELICPTR UTIL UH-60L

Show: None Selected All

Compare By

- None
- Family
- End Item

Done

start

Inbox - Microsoft Out... Oracle SQL*Plus http://niobe.logsa.ar... new web brief workin... Internet 7:57 AM

Comparing
a UH-60A and
a UH-60L.



Saved Reports

Save reports in "Favorites",

or "PFSA Reports",

or "Metric Analysis".

https://niobe.logsa.army.mil:9010/pfsa/index.jsp - Microsoft Internet Explorer provided by LOGSA

File Edit View Favorites Tools Help

Back Forward Stop Home Search Favorites Media Refresh Print Mail Stop

Address https://niobe.logsa.army.mil:9010/pfsa/index.jsp Go Links >>

Post Fielding Support Analysis - PFSA

Feedback Help Logout

Favorites

- System Views
 - 2004 Reset Chinooks
 - A Model Apache
 - All Aircraft Rolled Up
 - Base Chinook
 - CPME Aircraft
 - CPME mh sample 1
 - Compare Apache A&D
 - Compare Aviation Systems
 - D Model Apache
 - Kiowa
 - M1083
 - compare 2 sns
- Air Readiness Rates
 - FMC Rates for Aviation Systems
 - Usage Rates for Aviation Systems
- Workload
 - Maintenance Type and Levels
- PFSA Reports**
- Metric Analysis**
- Equipment Availability Rates
- Usage
- Workload
 - Workload Rates
- View Results**
- View TBM Results**
- Tools**
- Add System View
- Manage Criteria/System Views
- Item Browser
- Ad Hoc Query
- Contact Information
- PFSA Administration**

Maintenance Type and Levels :

Save Specific Criteria
Delete Specific Criteria
Execute Metric

Workload Rate
Date Range

Man Hour Base Selection

Total Man Hours

<input type="radio"/> Military	<input type="radio"/> Scheduled	<input type="radio"/> Crew
<input type="radio"/> Civilian	<input type="radio"/> Unscheduled	<input type="radio"/> Unit AVUM
<input type="radio"/> Contractor		<input type="radio"/> Intermediate DS/AVIM
		<input type="radio"/> Intermediate GS
		<input type="radio"/> Depot
		<input type="radio"/> SRA

All Personnel Types All Maintenance Types All Maintenance Levels
 By Personnel Type By Maintenance Type By Maintenance Level

<input checked="" type="checkbox"/> Scheduled
<input checked="" type="checkbox"/> Unscheduled

<input type="checkbox"/> Crew
<input checked="" type="checkbox"/> Unit AVUM
<input checked="" type="checkbox"/> Intermediate DS/AVIM
<input checked="" type="checkbox"/> Intermediate GS
<input type="checkbox"/> Depot
<input type="checkbox"/> SRA

Done Internet



View Results

http://niobe.logsa.army.mil:9009/pfsadev/devIndex.jsp - Microsoft Internet Explorer provided by LOGSA

Address http://niobe.logsa.army.mil:9009/pfsadev/devIndex.jsp

Post Fielding Support Analysis - PFSA

Feedback Help Logout

Favorites

System Views

- 2004 Reset Chinooks
- Blackhawk A Model
- Blackhawk A and L Model

Comparison

- Blackhawk Family
- Blackhawk L Model
- Chinook D Model
- Chinook Tail Nos w/ New Engines
- FMTV 2 1/2 Ton Family

Air Readiness Rates

- 2004 Reset Chinook FMC Rates
- 2004 Reset Chinook Usage Rates
- UH-60 A vs L FMC Rates

Workload

- 2004 Reset 47Ds Maintenance type and level
- Chinook D Model Scheduled Man Hour Rate by Personnel Type

PFSA Reports

- Metric Analysis**
- View Results**
- View TBM Results**

Tools

- Add System View
- Manage Criteria/System Views
- Item Browser
- Ad Hoc Query
- Contact Information

View Results

View: All | Executing | Complete | Failed

Results 1 - 10 of 26 First | Previous | Next | Last

Delete

Submit Time	Report Name (System View)	Elapsed Time	Status
<input type="checkbox"/>	2004 Reset Chinook FMC Rates (2004 Reset Chinook)	00:00:18	Completed
<input type="checkbox"/>	2004 Reset Chinook FMC Rates (Chinook Tail Nos w/ New Engines)	00:00:05	Completed
<input type="checkbox"/>	2004 Reset Chinook FMC Rates (2004 Reset Chinook)	00:00:22	Completed
<input type="checkbox"/>	UH-60 A vs L FMC Rates (Blackhawk A and L Model Comparison)	00:00:02	Completed
<input type="checkbox"/>	Average Flight Hours (Blackhawk A and L Model Comparison)	00:00:03	Completed
<input type="checkbox"/>	FMC Rates (Blackhawk A and L Model Comparison)	00:00:01	Completed
<input type="checkbox"/>	Workload Rates (Blackhawk A and L Model Comparison)	00:00:16	Completed
<input type="checkbox"/>	2004 Reset Chinook Usage Rates (2004 Reset Chinook)	00:00:00	Completed
<input type="checkbox"/>	Chinook D Model Usage Rate (Chinook D Model)	00:00:00	Completed
<input type="checkbox"/>	2004 Reset 47Ds Maintenance type and level (2004 Reset Chinooks)	00:00:00	Completed

Criteria 1 - 10 of 26 First | Previous | Next | Last

Done

start | Inbox - Mic... | ILS conf wk | WorldNetD... | new web b... | trainingses... | ILS PFSA T... | working tut... | LIDB Produ... | http://niob... | 4:04 PM

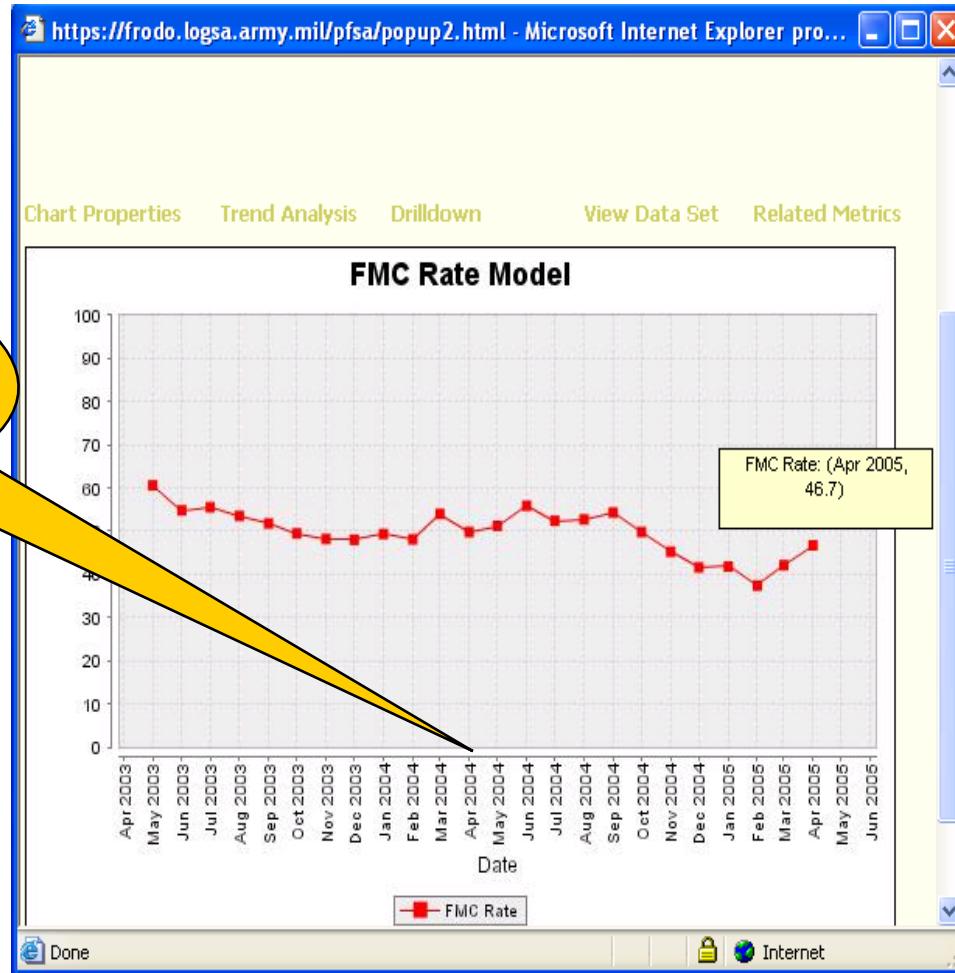
View results of Metric Results.

Reports can be viewed in HTML or PDF.



Metrics Results

View metric results with a 2 year history.





Drill-Downs

Various "Dirllldowns" to explain where results come from.

Drilldown

By Month.

https://niobe.logsa.army.mil:9010/pfsa/popup2.html

Logistics Support Analysis

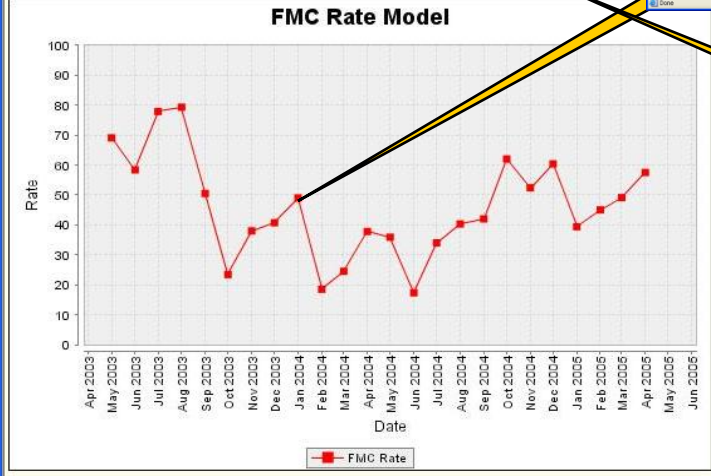
Readiness Rates by Geographic Location

Date	FMC Rate	NSC Rate	NSCM Rate	MC Rate
APR 2003	74.00	8.00	18.75	0.00
MAY 2003	60.00	4.00	18.75	0.00
JUN 2003	70.00	8.00	18.75	0.00
JUL 2003	78.00	8.00	18.75	0.00
AUG 2003	78.00	8.00	18.75	0.00
SEP 2003	50.00	4.00	18.75	0.00
OCT 2003	22.00	4.00	18.75	0.00
NOV 2003	38.00	4.00	18.75	0.00
DEC 2003	40.00	4.00	18.75	0.00
JAN 2004	48.00	4.00	18.75	0.00
FEB 2004	18.00	4.00	18.75	0.00
MAR 2004	36.00	4.00	18.75	0.00
APR 2004	35.00	4.00	18.75	0.00
MAY 2004	33.00	4.00	18.75	0.00
JUN 2004	33.00	4.00	18.75	0.00
JUL 2004	33.00	4.00	18.75	0.00
AUG 2004	40.00	4.00	18.75	0.00
SEP 2004	40.00	4.00	18.75	0.00
OCT 2004	62.00	4.00	18.75	0.00
NOV 2004	52.00	4.00	18.75	0.00
DEC 2004	60.00	4.00	18.75	0.00
JAN 2005	38.00	4.00	18.75	0.00
FEB 2005	42.00	4.00	18.75	0.00
MAR 2005	45.00	4.00	18.75	0.00
APR 2005	58.00	4.00	18.75	0.00
MAY 2005	58.00	4.00	18.75	0.00
JUN 2005	58.00	4.00	18.75	0.00

Chart Properties Trend Analysis Drilldown View Data Set

Business Rates by Serial Number - Nov 2004

Serial No.	UIC	UIC Description	FMC Rate	NSC Rate	NSCM Rate	MC Rate
8024154	W05AA	AV BN 06 CMO AIN BN	448	0	56.4	0
8024167	W05AA	AV BN 02	282	0	31.5	0
8024178	W05AA	AV BN 02	9	0	2.3	1.2
8024181	W05AA	CD A SW AIN	0	0	300	0
8024179	W05AA	AV BN 02	102	0	16.8	0
8024185	W05AA	AV BN 02	802	0	0	0.2
8024186	W05AA	AV BN 02	558	0	2.3	42.1
8024241	W05AA	AV BN 02	944	0	26.1	0
8024204	W05AA	AV CO 02 C CBT AIN	22	0	7.1	70.8
801948	W05AA	AV BN 02	133	0	17.1	0
801877	W05AA	ES BN	118	1.1	0	0
801900	W05AA	AV BN 02	74	0	24.8	0
8700112	W05AA	AV BN 02	378	0	0	0
800004	W05AA	AV CO 02 F	303	0	81.7	0
800109	W05AA	AV CO 02 F	104	0	0	100
800108	W05AA	AV CO 02 F	124	0	20.8	0



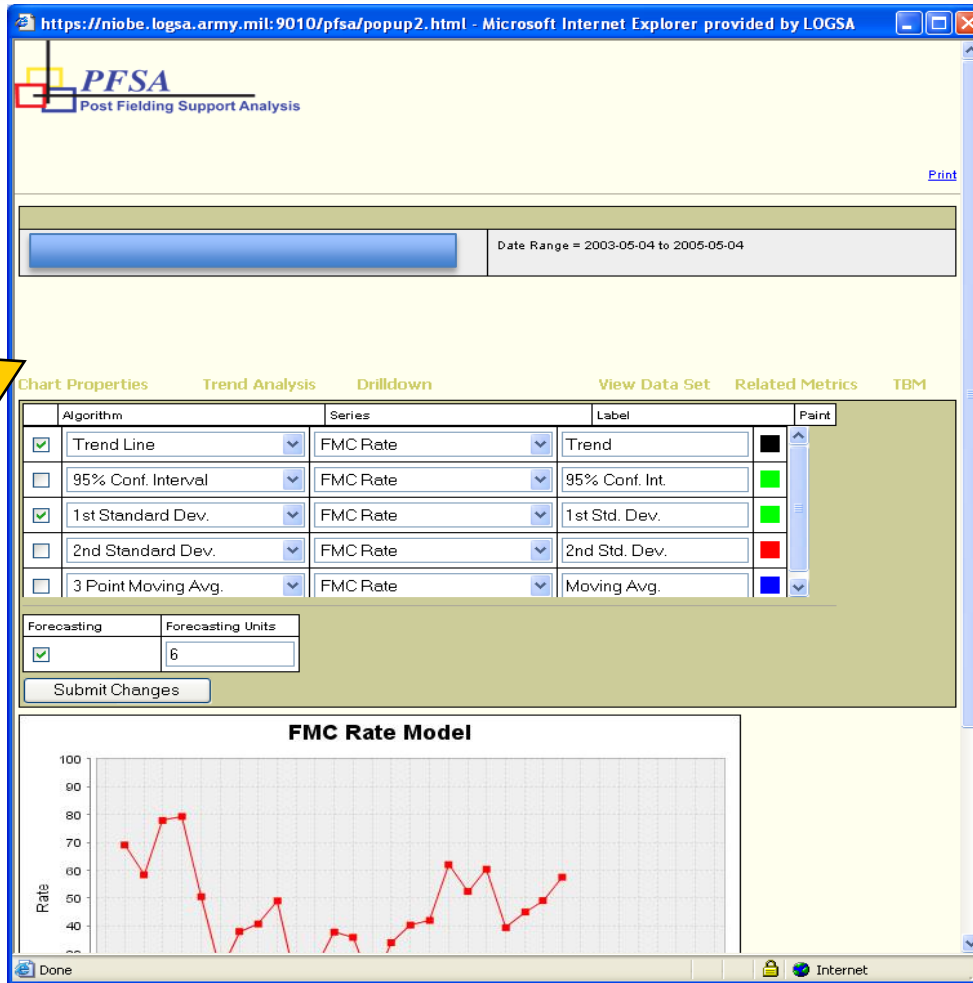
By Dataset.

Date	FMC Rate	NSC Rate	NSCM Rate	MC Rate
May 2003	201.4	27.4	6.3	102.1
Jun 2003	151.4	27.9	6.3	102.1
Jul 2003	177.9	15.1	6.2	101.7
Aug 2003	174.3	19	6.1	101.4
Sep 2003	165.5	16.8	6.3	102.1
Oct 2003	114	16.9	6.3	102.6
Nov 2003	101.4	0	0	101.6
Dec 2003	107	6.3	7.7	101.7
Jan 2004	40	16.2	2	101.9
Feb 2004	19.8	16.8	2	101.9
Mar 2004	24.5	41.8	17.1	111.3
Apr 2004	19.8	26.3	17.1	101.9
May 2004	19.8	40.2	17.1	101.9
Jun 2004	17.3	20.9	16.2	101.9
Jul 2004	14	20.1	16.2	101.9
Aug 2004	40.3	43.5	16.2	101.9
Sep 2004	40.3	43.5	16.2	101.9
Oct 2004	62	43.5	16.2	101.9
Nov 2004	52.4	43.5	16.2	101.9
Dec 2004	62.4	20.1	16.2	101.9
Jan 2005	19.4	17.9	16.2	101.9
Feb 2005	46	43.7	16.2	117.9
Mar 2005	46.1	16	14	101.9
Apr 2005	57.5	21.2	6	101.9
May 2005				



Trend Analysis

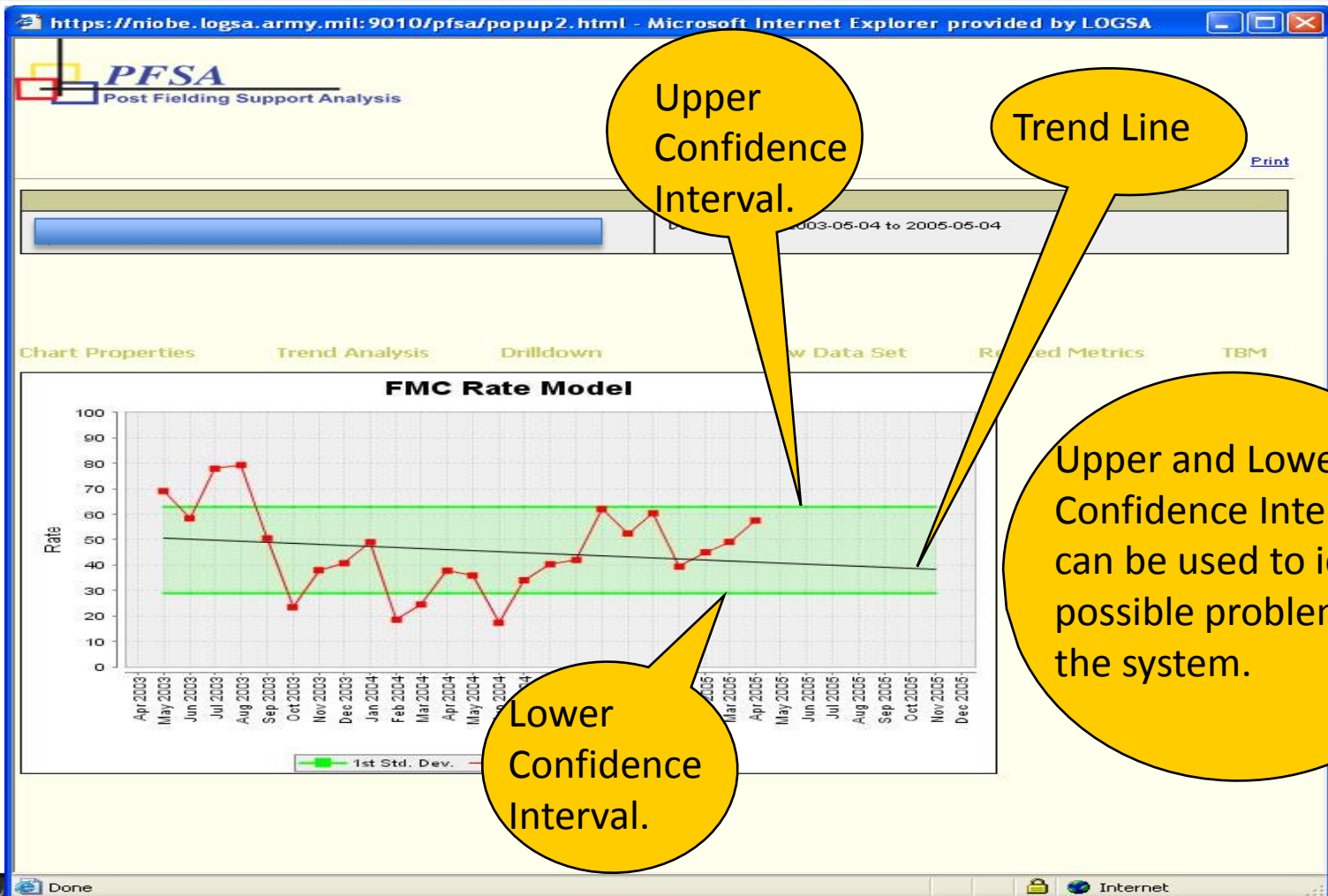
Trend Analysis shows a "Predictive Outlook" assuming no change in current operations.



See next slide for Trend Line example.

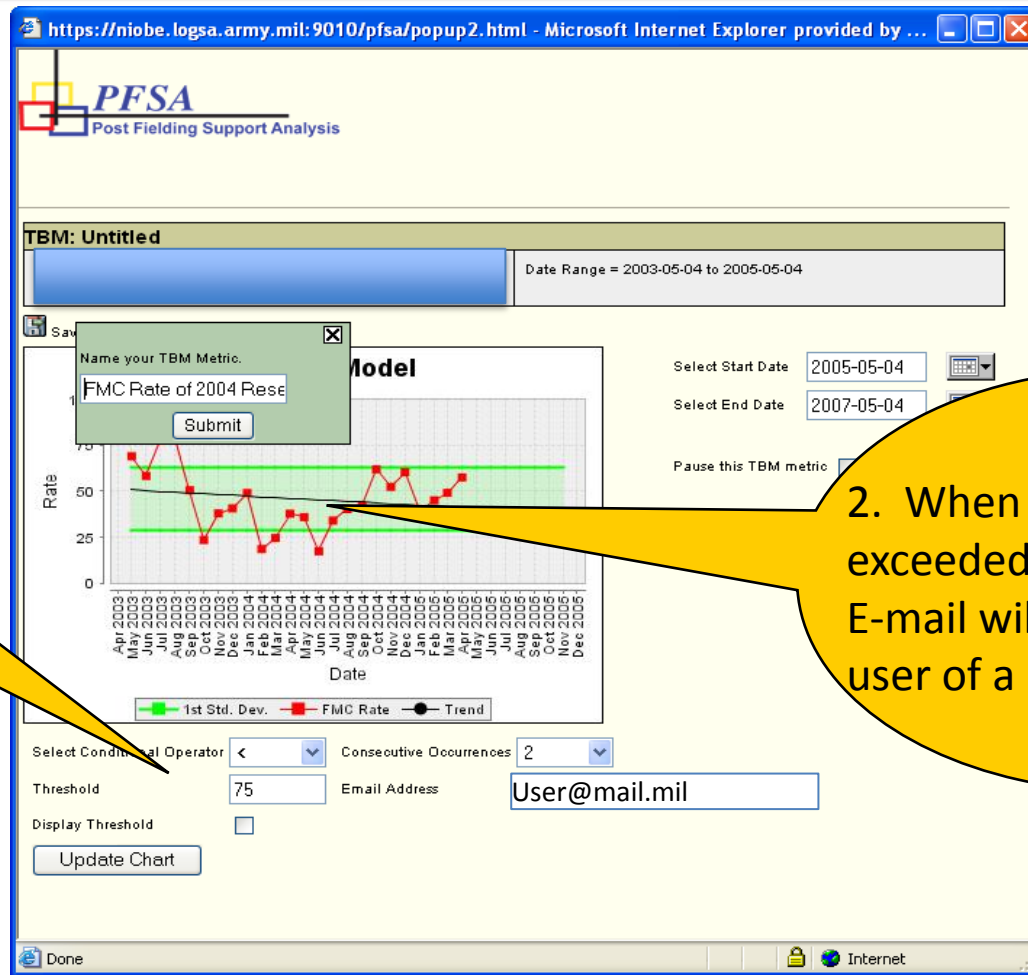


Upper/Lower Conf. Intervals





Trigger Based Metric



1. User sets their own boundaries.

2. When boundaries are exceeded, an automated E-mail will be sent to notify user of a potential problem.



Additional Capabilities

- Weapon System Report
 - Provides a two-year weapon system assessment based on field performance
 - Equipment Availability
 - Demand Drivers
 - Maintenance Drivers
 - Fleet Usage
 -
- Non-Standard Data
 - Common Platform Maintenance Environment (CPME) Warehouse
 - Natural Language Query Capability