

An aerial photograph of Fort George G. Meade in Maryland during the autumn season. The landscape is filled with trees in shades of orange, yellow, and red. A large, winding river or lake is visible in the center, surrounded by green lawns and various buildings. The sky is a clear, pale blue with some light clouds. The overall scene is peaceful and scenic.

***Welcome to***  
***FORT GEORGE G. MEADE***

“The Nation’s Center for Information, Intelligence and Cyber Operations”

“MEADE 101”  
August 2016



# Location

## Land Acreage

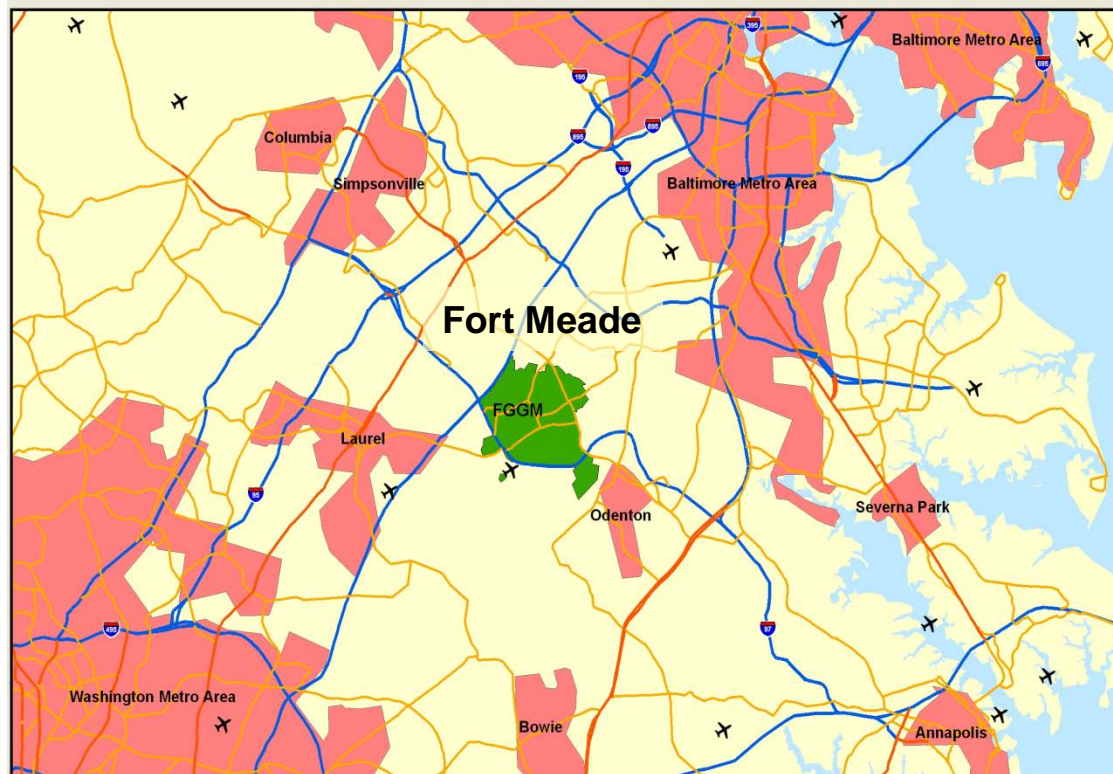
- 5,067 acres

## Buildings

- 1,673
- 11,055,345 SF
- Business park environment

## Tenant Units/Organizations

- 119 organizations including:
  - U.S. Cyber Command
  - National Security Agency
  - Defense Information Systems Agency
  - JFHQ-DODIN
  - CYBER National Mission Force
  - Defense Media Activity
  - Defense Adjudication Activity/ DoD CAF
  - EPA
  - 6 INSCOM Brigades



## Important Characteristics

- Hwy 295, RTs 32, 175 border installation
- Nature Preserve on south border
- Base divided by MD 175
- Anne Arundel County Schools

# Fort Meade Population

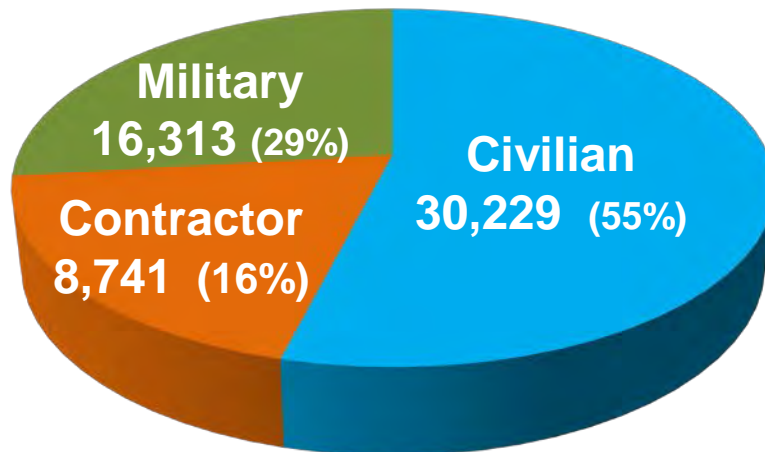
Other Eligible Patrons	TOTAL
Active (not on post)	760
Active Dependents	20,158
Reserve Component	1,659
Reserve Dependents	3,250
Retirees	14,675
Retiree Dependents	41,612
DoD Civilians	685
DoD Civilian Dependents	348
<b>TOTAL</b>	<b>83,147</b>

Limited to 40 mile radius eligible for services from Fort Meade  
As of 30 Sep 2015

Total supported population = **138,463**

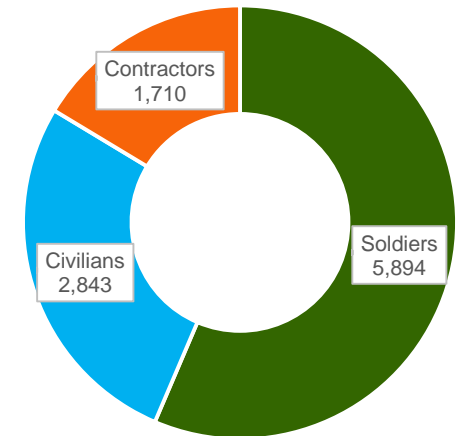
Total ASIP Population 55,316

Joint and Agency 44,869 81.1%



FY16Q2 Locked Data 30 April 2016

Army only total 10,447  
18.8%



\* Soldiers include Active duty and Reserve Comp

*“Fort Meade is our military’s senior Cyber mission platform. The organizations assigned here are defending our national interests in Cyberspace 24 hours a day, 7 days a week” – Colonel Brian Foley*



# Meade Facilities

## HOUSING

<b>Troop Barracks (E1-E5 Permanent Party)</b>	<b>1,200 rooms</b>
<b>Family Housing</b>	<b>2,627 homes</b>
<b>Candlewood Suites (Privatized Army Lodging-PAL)</b>	<b>243 rooms</b>
<b>Reece Crossings Garden Apartments (Privatized Apartments)</b>	<b>432 units / 816 beds</b>

## OTHER KEY FACILITIES

<b>Child, Youth &amp; School Services (CYSS) Five Child Development Ctrs (2 new), Teen Ctr, Youth Ctr, School Age Service Ctr</b>	<b>8 Facilities</b>
<b>On Post Schools (Anne Arundel County Public Schools) One HS, Two MS, Three ES, One Pre K / Kindergarten School</b>	<b>7 Schools</b>
<b>McGill Training Center</b>	<b>1</b>
<b>Training Support Center (TSC)</b>	<b>1</b>
<b>Wellness Center</b>	<b>1</b>
<b>Chapels</b>	<b>3</b>
<b>Gaffney Fitness Center</b>	<b>1</b>
<b>Murphy Field House</b>	<b>1</b>
<b>Resiliency / Education Center (planned)</b>	<b>1</b>



# Sustain and Improve Infrastructure to Support Continued Growth

## Growth Projection

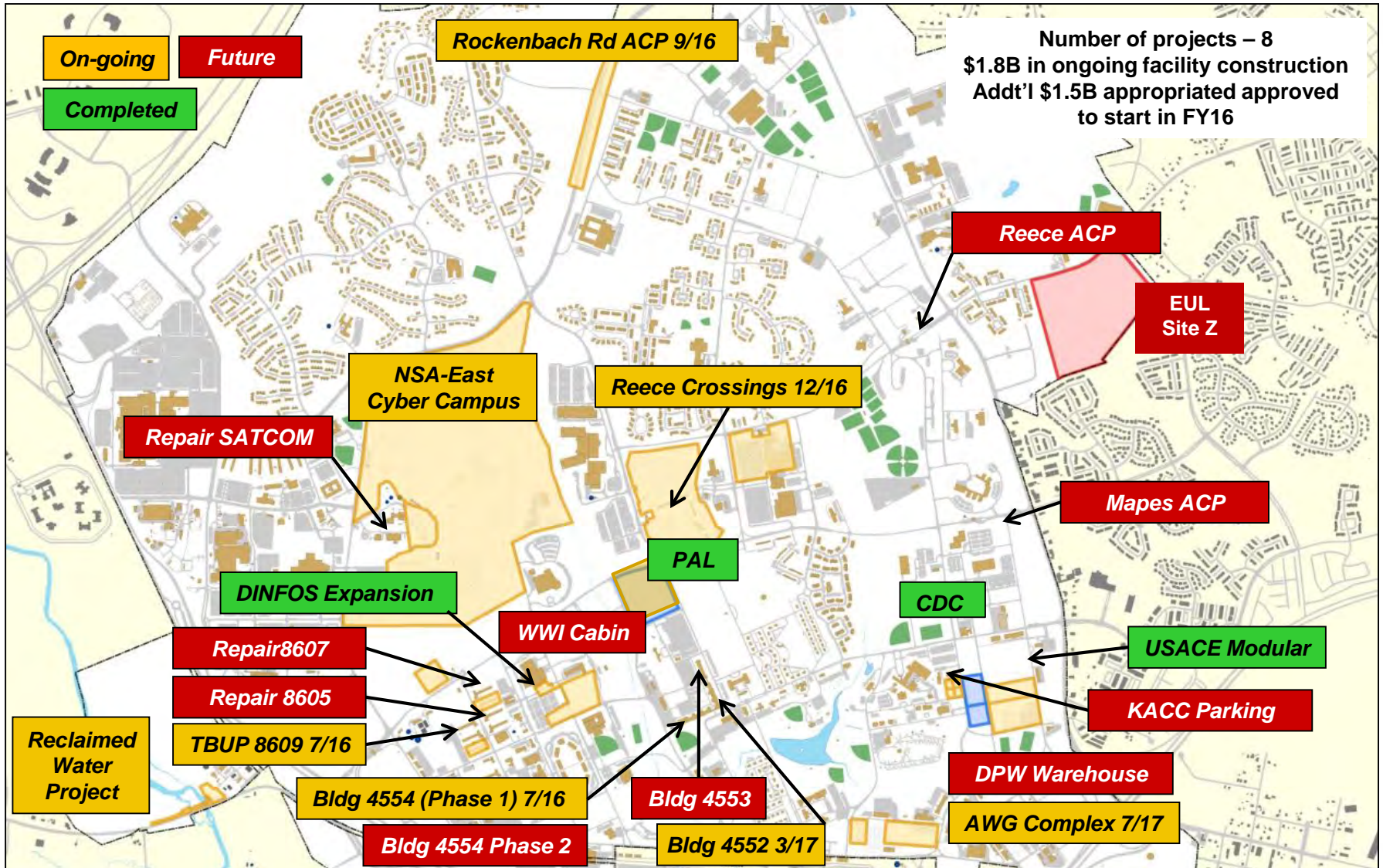
Fort Meade: Twelve organizations will brief stationing actions totaling growth of 991 personnel over the next five Fiscal Years at the 30 March IMCOM Cyber Installation Support Summit. In addition, 3,000 to 6,000 employees, currently included in the NSA's ASIP population, will move onto main post from regional leased facilities between 2024 and 2028.

Growth	Organizations
FY16-19 (991)	<ul style="list-style-type: none"><li>• Air Force Cyber</li><li>• Marine Corps Cyber</li><li>• Navy Fleet Cyber</li><li>• 70<sup>th</sup> Intelligence, Surveillance and Reconnaissance Wing</li><li>• Navy Information Operations Command</li><li>• INSCOM, 780<sup>th</sup> MI Bde</li><li>• Joint Spectrum Center</li><li>• DoD Combined Adjudications Facility</li><li>• CO L, Marine Crypto</li><li>• 502<sup>nd</sup> MI BN CST</li><li>• 902<sup>nd</sup> MI Group</li><li>• SOCCOM Joint Communications Integration Element (pre-stationing planning)</li><li>• Defense Cyber Crime Center (pre-stationing planning)</li></ul>

*NOTE: All numbers are based on estimates of projected growth and are subject to change.*



# Transformation 2016 - 2020





# Fort Meade and State Roadway Projects

## FGGM MILCON Road Projects

### Funded

\* **Reece Rd/ACP**  
**at MD 175 (\$19.5M)**

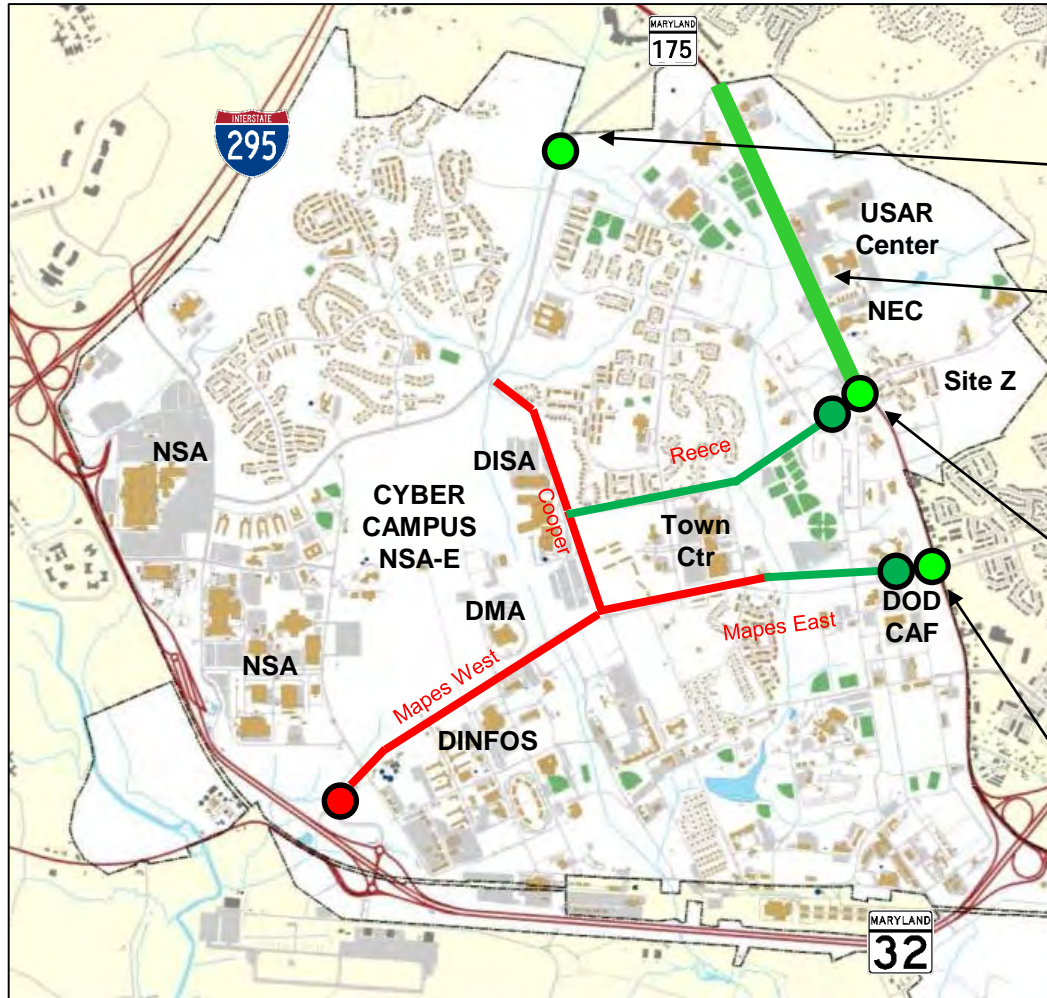
\* **Mapes Rd**  
**East/ACP at MD**  
**175 (\$15M / \$11M)**

Unfunded  
**Cooper Ave**  
**Middle Section**  
**(\$5.6M)**

**Mapes Rd**  
**West/ACP**  
**at MD 32**  
**(\$19.45M)**

**Total \$70.55M**

\* *\$34.5M included in the  
FY16 NDAA and CAA: COE  
Pre-design work underway*



## MD State **Funded** Road Projects

**Rockenbach ACP**  
\$10M, completion '16

**MD 175, Disney Rd to Reece Rd**  
\$10M TIGER Grant  
\$36.6M State/Federal  
Formula Funding  
Advertise June '16  
Completion est '20

**Reece Rd Intersection at MD 175**  
\$14.1M, started '14  
Completion est '17

**Mapes Rd Intersection at MD 175**  
\$14.1M, started '14  
Completion est '17

**IPL 1**



# Fort Meade Community Partnership

**GOAL:** Share available resources to the greatest extent legally possible and ensure service members, families and civilians have the support of the local community.

## Key Partners

- Fort Meade Community Covenant Council
- Regional Growth Management Committee
- BWI Partnership
- Fort Meade Alliance
- West AACC and BWCC
- AA County Schools
- Anne Arundel and Howard Community Colleges
- AA County Emergency Responders
- University Systems of Maryland
- Maryland Delegation Staff

