

Story Puzzle!

MOVING DAY

Military OneSource

ROAD TRIP
GAMES

Directions

This game can be played with two or more players. Using blunt-tip scissors, cut out the pictures below and place them face down. The first player selects a card and may take up to two minutes to tell a story using the picture. The next player selects a card and, taking up to two minutes, continues the story using the that picture. The game continues using each of the pictures.



Call. 800-342-9647

Click. [MilitaryOneSource.mil](https://www.militaryonesource.mil)

Connect. 24/7



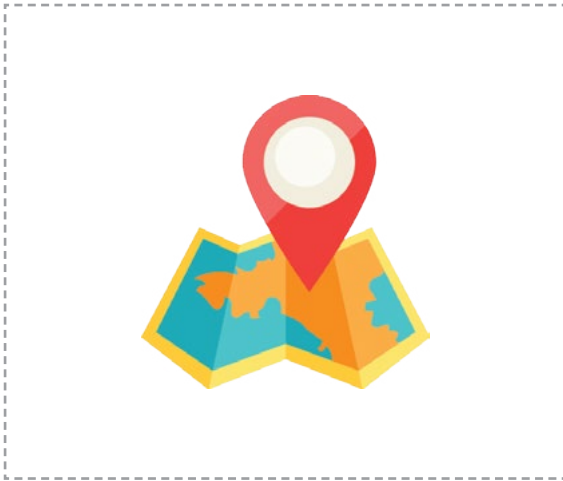
Story Puzzle!

GOING ON A PLANE



Directions

This game can be played with two or more players. Using blunt-tip scissors, cut out the pictures below and place them face down. The first player selects a card and may take up to two minutes to tell a story using the picture. The next player selects a card and, taking up to two minutes, continues the story using the that picture. The game continues using each of the pictures.



Call. 800-342-9647
Click. MilitaryOneSource.mil
Connect. 24/7



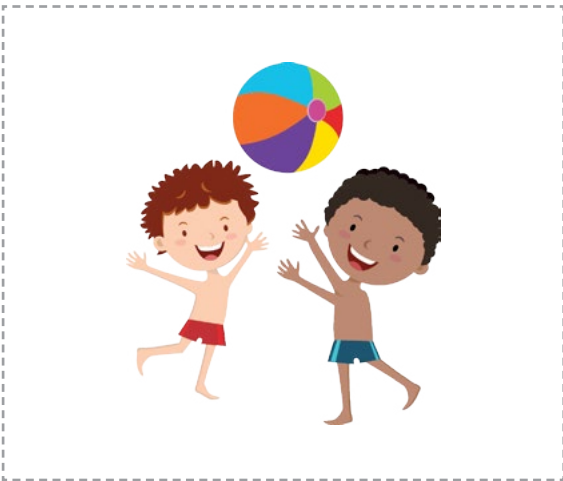
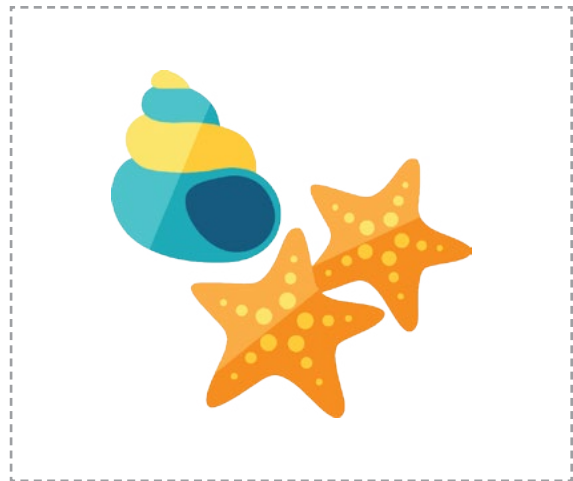
Story Puzzle!

SUMMERTIME FUN



Directions

This game can be played with two or more players. Using blunt-tip scissors, cut out the pictures below and place them face down. The first player selects a card and may take up to two minutes to tell a story using the picture. The next player selects a card and, taking up to two minutes, continues the story using the that picture. The game continues using each of the pictures.



Call. 800-342-9647
Click. MilitaryOneSource.mil
Connect. 24/7



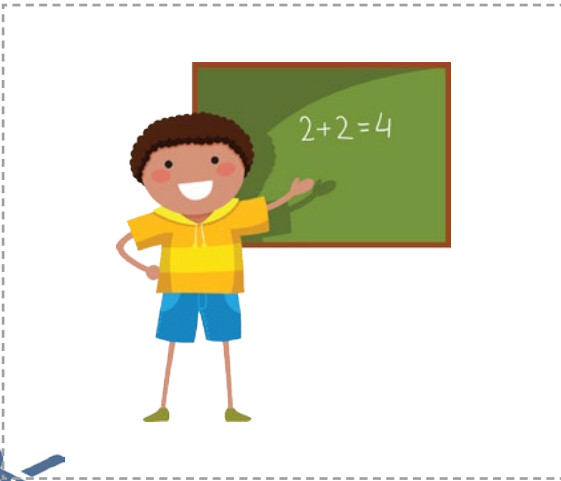
Story Puzzle!

FUN AT SCHOOL

Military OneSource
ROAD TRIP
GAMES

Directions

This game can be played with two or more players. Using blunt-tip scissors, cut out the pictures below and place them face down. The first player selects a card and may take up to two minutes to tell a story using the picture. The next player selects a card and, taking up to two minutes, continues the story using the that picture. The game continues using each of the pictures.



Call. 800-342-9647
Click. MilitaryOneSource.mil
Connect. 24/7



Story Puzzle!

VISITING GRANDPARENTS

Military OneSource

ROAD TRIP
GAMES

Directions

This game can be played with two or more players. Using blunt-tip scissors, cut out the pictures below and place them face down. The first player selects a card and may take up to two minutes to tell a story using the picture. The next player selects a card and, taking up to two minutes, continues the story using the that picture. The game continues using each of the pictures.



Call. 800-342-9647
Click. MilitaryOneSource.mil
Connect. 24/7



Story Puzzle!

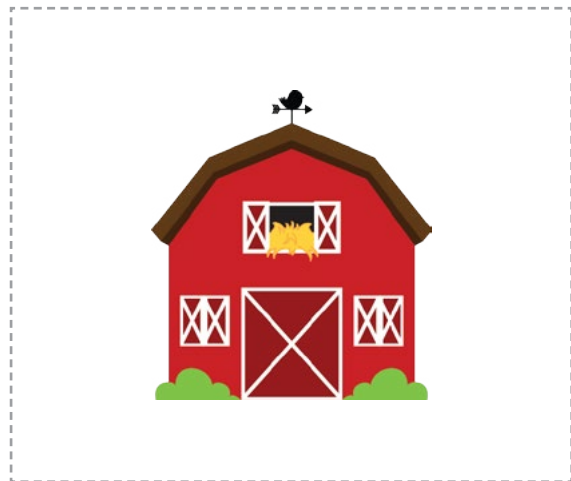
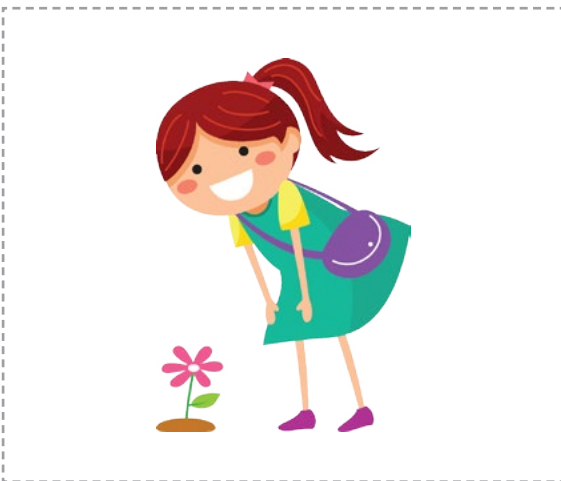
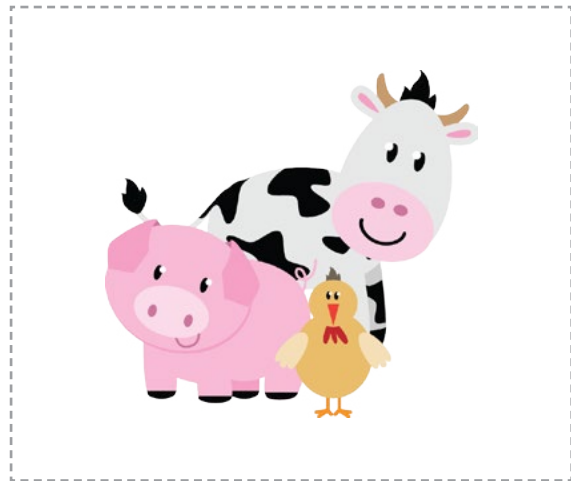
GOING TO A FARM

Military OneSource

ROAD TRIP
GAMES

Directions

This game can be played with two or more players. Using blunt-tip scissors, cut out the pictures below and place them face down. The first player selects a card and may take up to two minutes to tell a story using the picture. The next player selects a card and, taking up to two minutes, continues the story using the that picture. The game continues using each of the pictures.



Call. 800-342-9647
Click. [MilitaryOneSource.mil](https://www.militaryonesource.mil)
Connect. 24/7



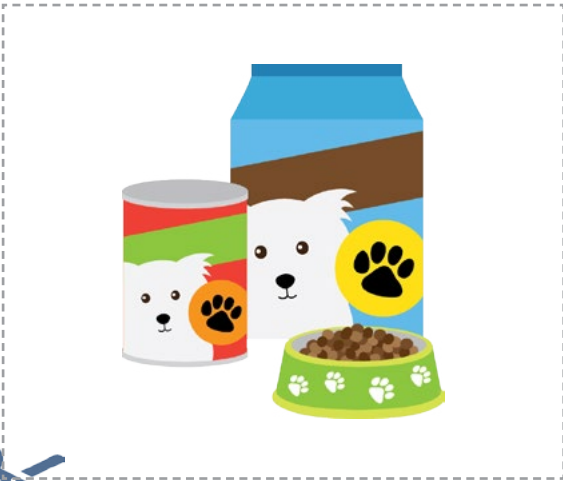
Story Puzzle!

MY NEW DOG



Directions

This game can be played with two or more players. Using blunt-tip scissors, cut out the pictures below and place them face down. The first player selects a card and may take up to two minutes to tell a story using the picture. The next player selects a card and, taking up to two minutes, continues the story using the that picture. The game continues using each of the pictures.



Call. 800-342-9647
Click. MilitaryOneSource.mil
Connect. 24/7



Story Puzzle!

GOING CAMPING

Military OneSource

ROAD TRIP
GAMES

Directions

This game can be played with two or more players. Using blunt-tip scissors, cut out the pictures below and place them face down. The first player selects a card and may take up to two minutes to tell a story using the picture. The next player selects a card and, taking up to two minutes, continues the story using the that picture. The game continues using each of the pictures.



Call. 800-342-9647
Click. [MilitaryOneSource.mil](https://www.militaryonesource.mil)
Connect. 24/7



Story Puzzle!

A DAY IN THE PARK

Military OneSource

ROAD TRIP
GAMES

Directions

This game can be played with two or more players. Using blunt-tip scissors, cut out the pictures below and place them face down. The first player selects a card and may take up to two minutes to tell a story using the picture. The next player selects a card and, taking up to two minutes, continues the story using the that picture. The game continues using each of the pictures.



Call. 800-342-9647
Click. MilitaryOneSource.mil
Connect. 24/7



Story Puzzle!

PLANT A GARDEN

Military OneSource

ROAD TRIP GAMES

Directions

This game can be played with two or more players. Using blunt-tip scissors, cut out the pictures below and place them face down. The first player selects a card and may take up to two minutes to tell a story using the picture. The next player selects a card and, taking up to two minutes, continues the story using the that picture. The game continues using each of the pictures.



Call. 800-342-9647
Click. MilitaryOneSource.mil
Connect. 24/7

