

# Guess the STATE!

SOUTHWEST REGION

Military OneSource

ROAD TRIP  
GAMES

1

- The original London Bridge is now located on Lake Havasu in this state.
- This state has the highest percentage of Native American tribal lands in the United States.
- This state is home to ghost towns named Tombstone and Gillette.
- This state's capital is Phoenix.
- The Grand Canyon is located in this state.

**What state is this?**



2

- This state is called the Land of Enchantment.
- The Albuquerque International Balloon Fiesta is hosted in this state each year.
- This state shares an international border with Mexico.
- White Sands National Monument is a desert made of white gypsum crystals instead of sand.
- This state's capital, Santa Fe, is the oldest capital city in the United States.

**What state is this?**



*Call.* 800-342-9647

*Click.* [MilitaryOneSource.mil](http://MilitaryOneSource.mil)

*Connect.* 24/7



# Guess the STATE!

SOUTHWEST REGION

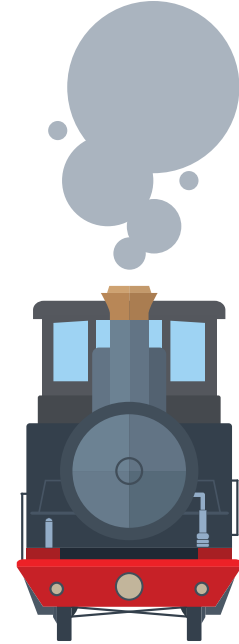
Military OneSource

ROAD TRIP  
GAMES

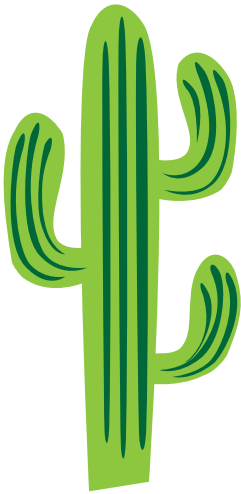
3

- The nation's first transcontinental railroad was completed in this state in 1869.
- This state is home to the Great Salt Lake, which covers 2,100 square miles.
- The state takes its name from the Native American Ute tribe.
- Five national parks are located in this state: Arches, Bryce Canyon, Canyonlands, Capital Reef and Zion.
- The capital of this state is Salt Lake City.

**What state is this?**



4



- This state has the world's largest rodeo.
- The name of this state comes from a Spanish word meaning "colored red."
- This nation's highest railway, the Pikes Peak Cog Railway, is in this state.
- This state is home to Rocky Mountain National Park.
- The capital of this state is Denver.

**What state is this?**

Answers: (1) Arizona (2) New Mexico (3) Utah (4) Colorado



**Call.** 800-342-9647

**Click.** [MilitaryOneSource.mil](https://www.militaryonesource.mil)

**Connect.** 24/7



Preschool

School age

All ages

