



Build Capacity Cloud and Army Data Center Consolidation

Mr. Jeremy Hiers
Project Director, PD ES

22 May 2013

Agenda

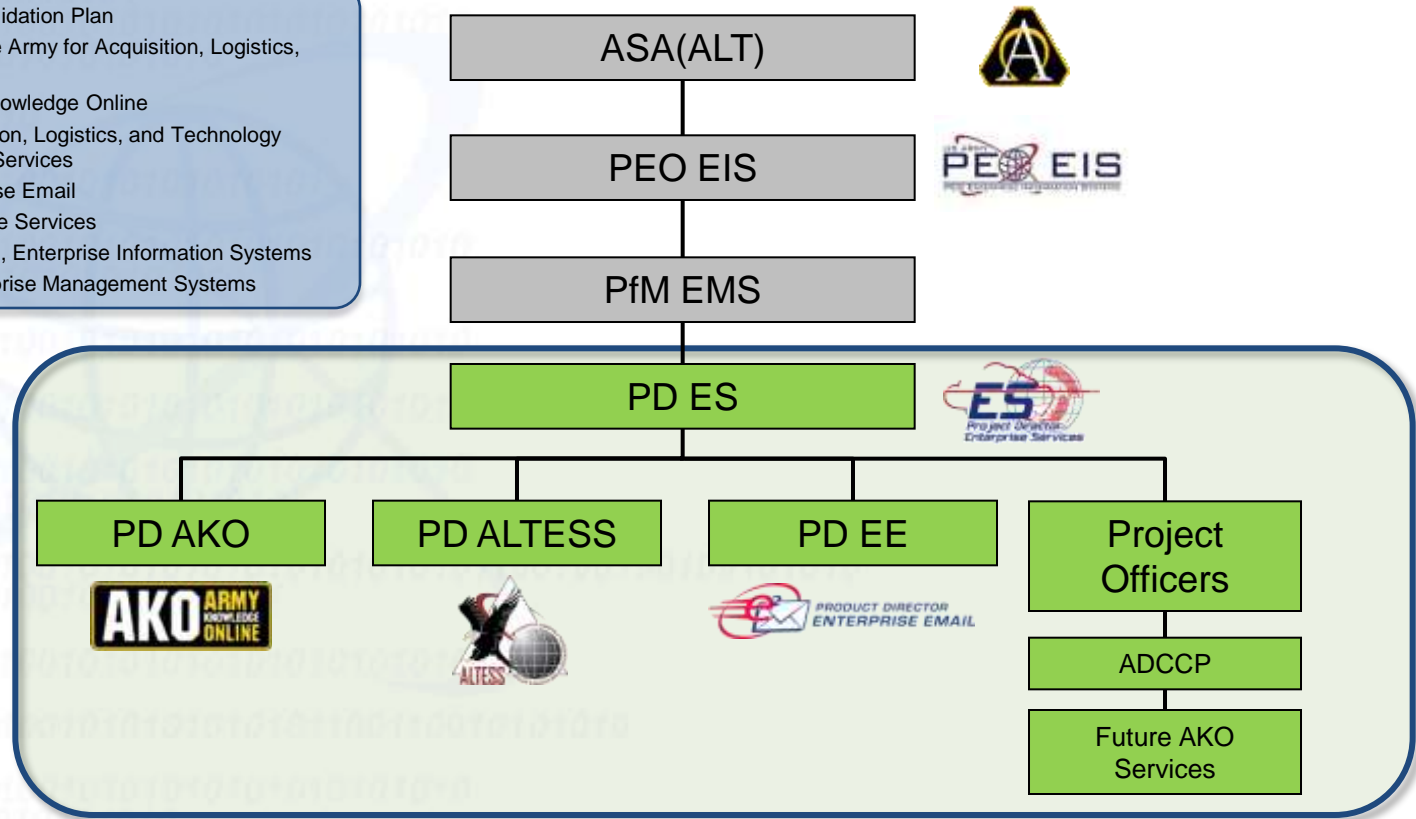
- **Who is PD Enterprise Services?**
- **Lines of Effort Supporting Cloud and Army Data Center Consolidation Plan (ADCCP)**
- **Synchronizing and Implementing the Lines of Effort**
- **Challenges**



Who is PD Enterprise Services

PD ES Mission: Develop, deliver, and sustain enterprise level IT services that enable end-to-end communication, collaboration, messaging, content management, and application hosting across the Army.

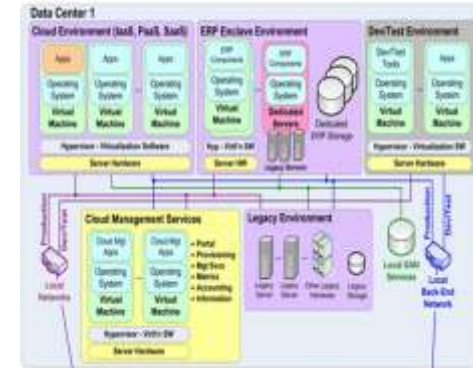
ADCCP	Army Data Center Consolidation Plan
ASA(ALT)	Assistant Secretary of the Army for Acquisition, Logistics, and Technology
PD AKO	Product Director Army Knowledge Online
PD ALTESS	Product Director Acquisition, Logistics, and Technology Enterprise Systems and Services
PD EE	Product Director Enterprise Email
PD ES	Project Director Enterprise Services
PEO EIS	Program Executive Office, Enterprise Information Systems
PfM EMS	Portfolio Manager, Enterprise Management Systems



Lines of Effort Supporting Cloud and ADCCP

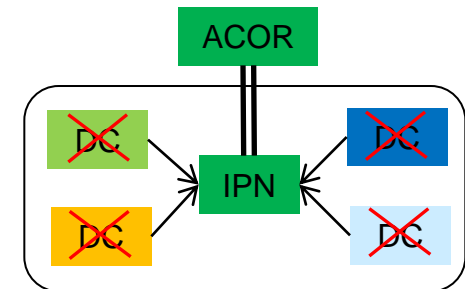
■ LOE #1 Establish the Army Datacenter Computing Environment (DCCE)

- Design the computing environment that will reside within the enduring data centers
- Acquire the computing environment
- Perform configuration and lifecycle management of the computing environment



■ LOE #2 Installation Data Center Consolidation (IDCC)

- Data Center discovery & designation of enduring vs closing data centers
- ACOR and IPN Implementation
- Installation consolidation engineering/implementation



■ LOE #3 App and System Modernization/Migration

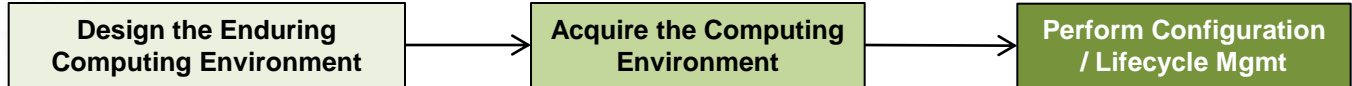
- Application discovery, rationalization, modernization, and migration





Synchronizing and Implementing the Lines of Effort

LOE #1
Establish the DCCE



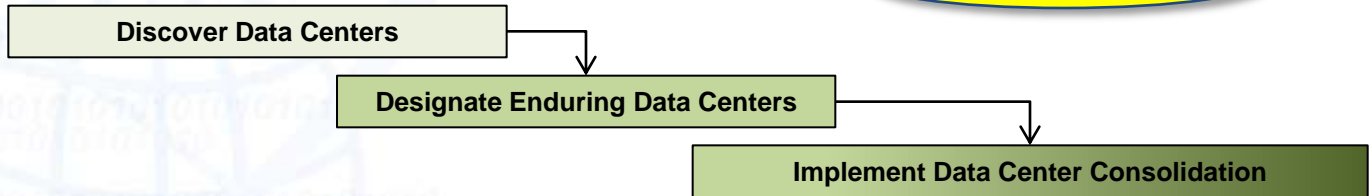
What do enduring DCs need to look like?

How much capacity do we need?

What Management Approach to Use?

What Funding Model to Use?

LOE #2
DC Consolidation

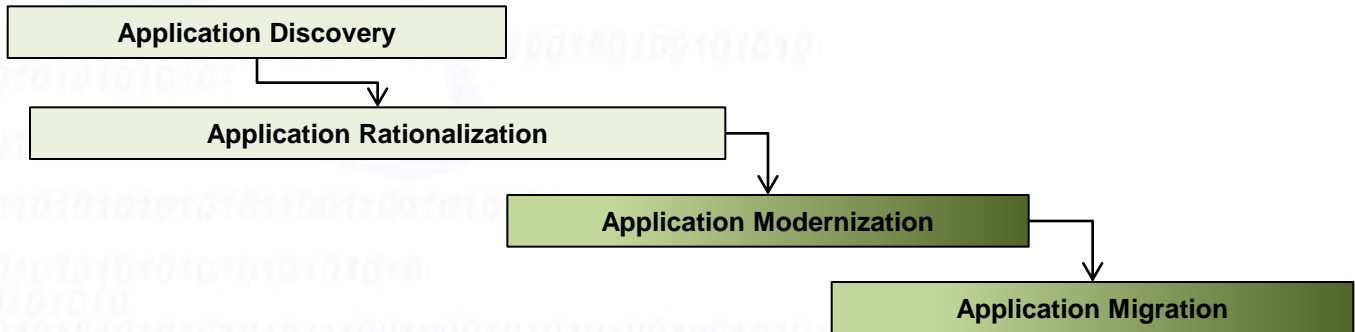


What standard do apps modernize to?

Where do apps migrate to?

How many enduring DCs do we need?

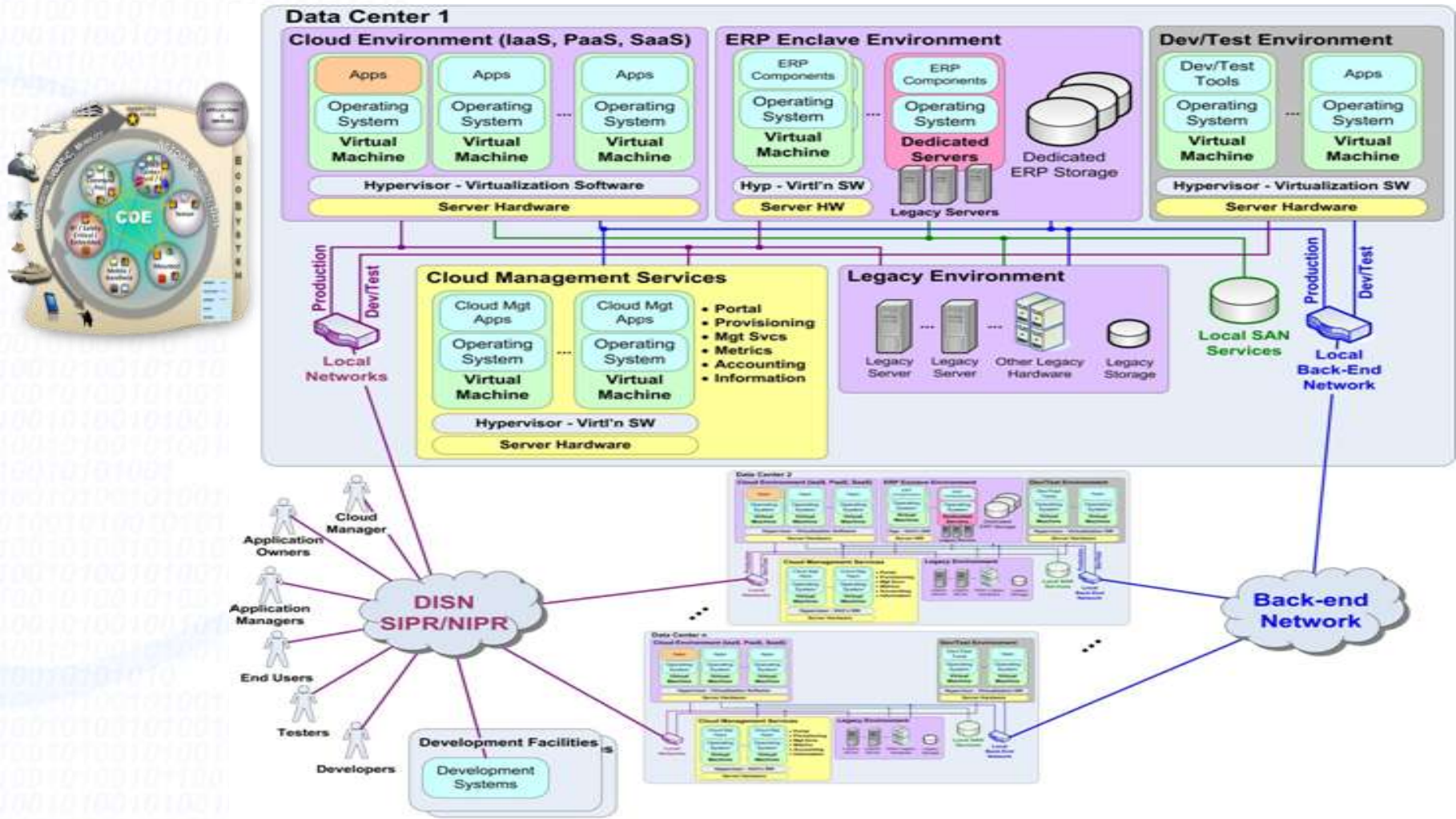
LOE #3
App Modernization & Migration



- Current Efforts
- Late FY13/14 Focus
- Out-year Focus

Synchronizing and Implementing the Lines of Effort

Core Data Center and Installation Processing Node Computing Environment



Challenges

- **Synchronizing the Lines of Effort with Enterprise Initiatives & Industry Trends**
 - Lots of interdependencies (i.e., Joint Information Environment, network capacity, enterprise services, emerging functional requirements for hosted systems, etc)
 - Industry is moving fast (technology advancements, increased commercial hosting options, etc)

- **Continue to meet the spirit of data center consolidation without “putting the cart before the horse”**
 - Impossible to create a “one size fits all” solution (e.g., end-to-end processes that encompass both generating force and tactical environments, funding models, management approaches, etc)
 - Identifying interim solutions that minimize sunk costs while we identify the end-state solution
 - Make vs. Buy vs. Lease decision across the various operating environments
 - Closing data centers doesn’t produce the real savings – app consolidation & modernization does

