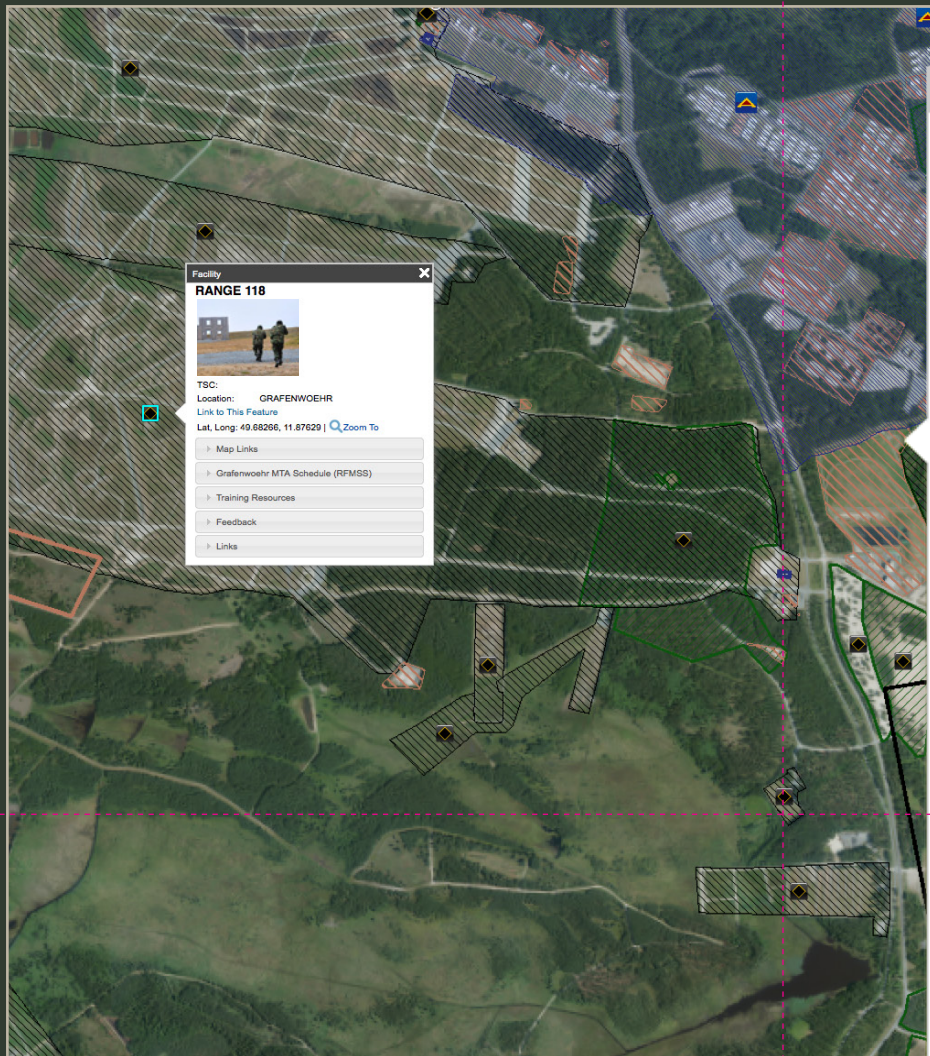


» STEP 1:
FIND A TRAINING CAPABILITY



» STEP 2:
FIND INFORMATION ON THE CAPABILITY

US Army

RANGE 118

US Army
[Link to This Feature](#)
 Lat, Long: 49.68266, 11.87629 | [Zoom To](#)

Map Links

Map Links

[How to Find Us \(Access Map\)](#)
[Topo Map](#)
[Command Map](#)

Grafenwoehr MTA Schedule (RFMSS)

Grafenwoehr MTA Schedule (RFMSS)

Current Status: active
[Show Capabilities](#)

Today's Schedule

From:
 To:
[Submit Date Search](#)

Training Resources

Training Resources

[Resource Library](#)
[Training Aids & Devices Summary](#)
[Training Aids & Devices Full](#)
[TSAE Handbook](#)

Feedback

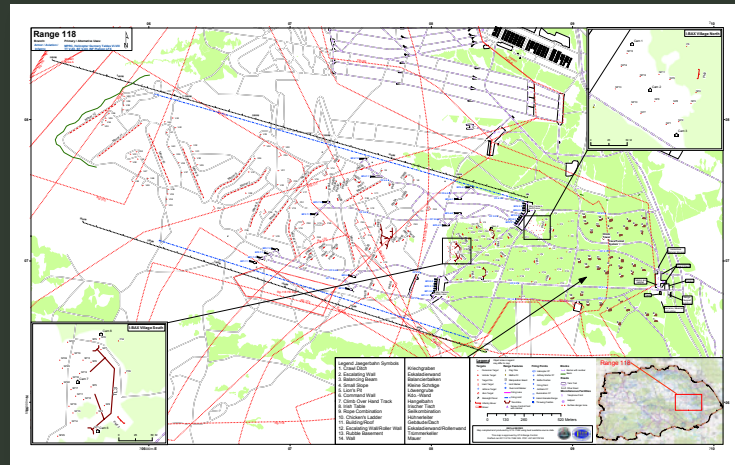
Feedback

[Lessons Learned / TTPs](#)
[Comments \(ICE\)](#)

Links

Links

[USAREUR Website](#)
[CALL site](#)
[CATS site](#)



Future Schedule (RFMSS)

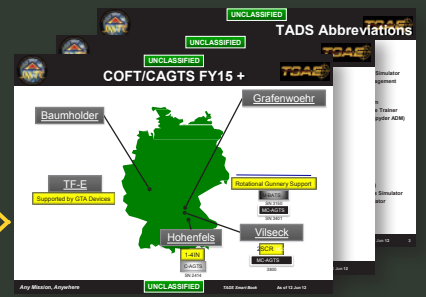
INSTALLATION	FACILITY	START	END	UNIT	UNIT POC PHONE	EVENT
GTA	RG118	08-MAR-15	21-MAR-15	173/2-503	637-4072	CO LFX
GTA	RG118	08-MAR-15	21-MAR-15	173BDE	637-4072	CO LFX
GTA	RG118	13-MAR-15	21-MAR-15	173/1-91CAV	637-4072	TEAM LFX
GTA	RG118	22-MAR-15	18-APR-15	12CAB	4758387	AVN DR GNRY
GTA	RG118	20-APR-15	24-APR-15	BW/VERS BTL 4	475-5800	SMALL ARMS
GTA	RG118	27-APR-15	01-MAY-15	DK/1BDE	0	M2 QUAL
GTA	RG118	01-MAY-15	09-MAY-15	173/4-319AFAR	634-4072	M4 QUAL
GTA	RG118	04-MAY-15	05-MAY-15	DK/2BDE	475-6730	LIVE FIRE EXERCISE (LFX)
GTA	RG118	06-MAY-15	06-MAY-15	173/1-503	6374072	PLT LFX
GTA	RG118	07-MAY-15	08-MAY-15	DK/2BDE	475-6730	LIVE FIRE EXERCISE (LFX)

Page 1 of 2 (17 items) [1] 2 [All]

RANGE 118 Resource Library

Contents of GTA

File Link	Type
Range1 Terrain Tool - RTA U32014.pdf	pdf
SOP 1 GTA RANGE OPERATIONS SOP 2012.pdf	pdf
SOP 2 GTA MANUEVER TRAINING MAR 2011.pdf	pdf
SOP 3 GTA INDIRECT FIRE DEC 2010.pdf	pdf
SOP 4 GTA AVIATION SOP 2011.pdf	pdf
SOP 5 GTA QASAS ADMINISTRATION JUN 2012.pdf	pdf
SOP 6 GTA ENGINEER MAY 2012.pdf	pdf
SOP SPC GTA Land Nav Handbook 2011.pdf	pdf
SOP SPC GTA Training Unit Environmental Aug2012.pdf	pdf
SOP SPC GTA Training Unit Environmental Aug2012_GE.pdf	pdf



Tactics, Techniques & Procedures Report

This form is intended to capture feedback on real world use of the Training Facilities depicted in TAP IN. For comments relating to the TAP IN website please send an email to usareur.srp.contact@us.army.mil

RANGE 118

What training was conducted?

What was good about the training facility?

What about the Training Facility could improve?

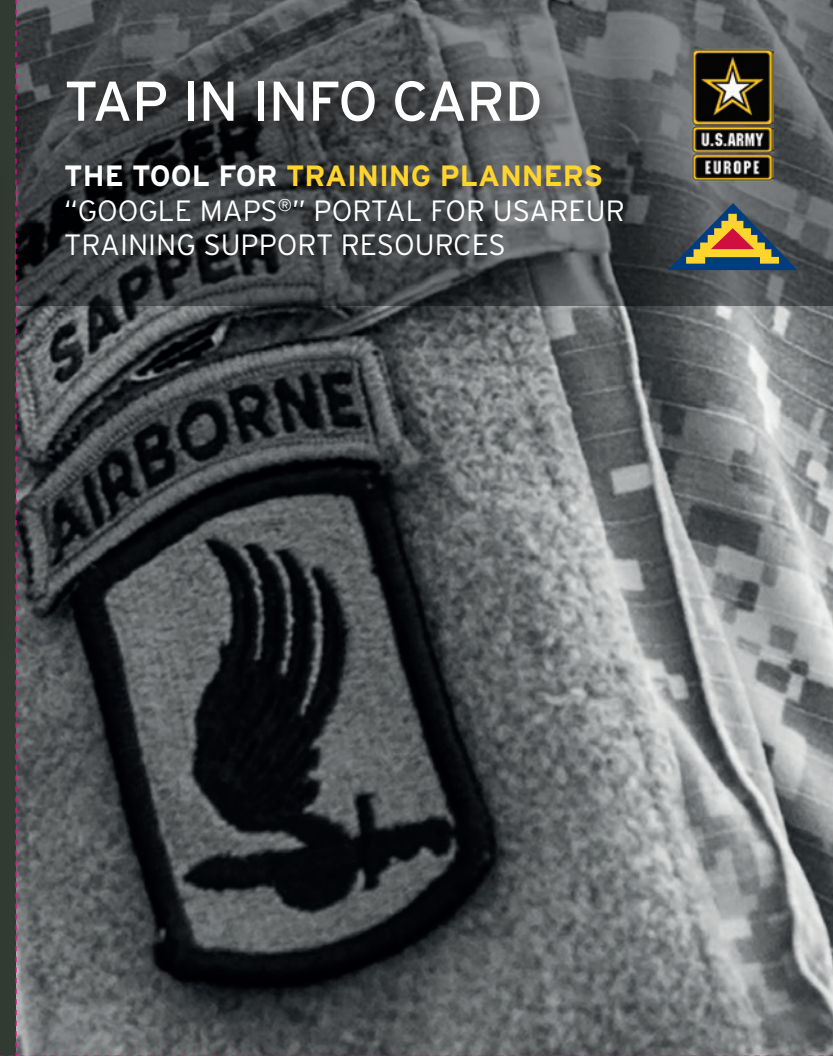
Any additional comments?

Submit Reset

» AND
MUCH
MORE!

TAP IN INFO CARD

THE TOOL FOR TRAINING PLANNERS
"GOOGLE MAPS®" PORTAL FOR USAREUR
TRAINING SUPPORT RESOURCES



GET IT NOW!

CALL 475-ITAM
OR EMAIL usareur.srp.contact@us.army.mil

FULL SCREEN TAP IN
<https://armyrangemapper.eur.army.mil/tapin>

891 TRAINING CAPABILITIES IN EUROPE AND AFRICA

INCLUDES 139 TRAINING AREAS, 141 RANGES, 194 DROP ZONES, 9 DIGITAL TRAINING FACILITIES, AND MUCH MORE

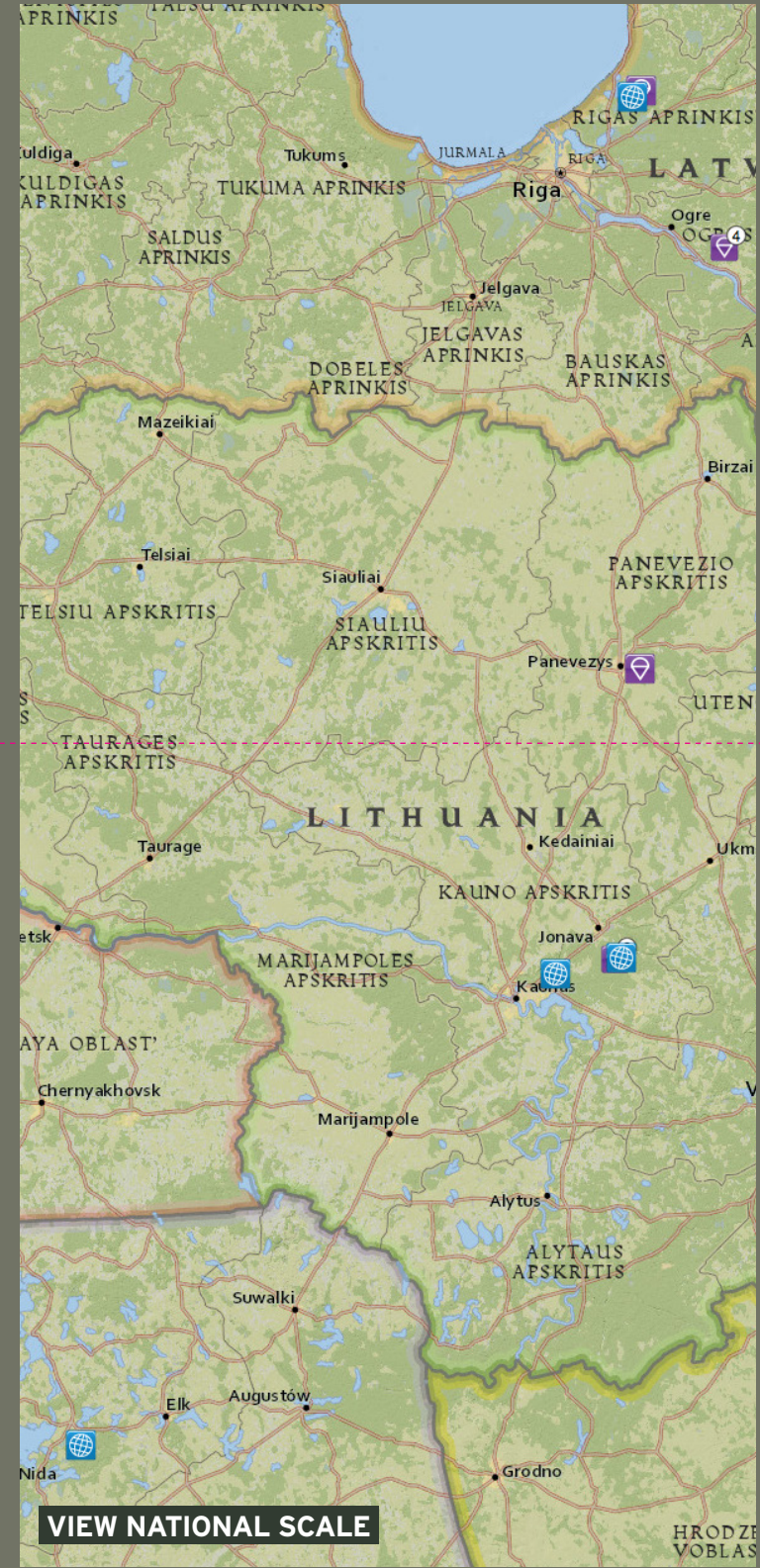
UNIT SHAREPOINT
SITES WITH TAP IN



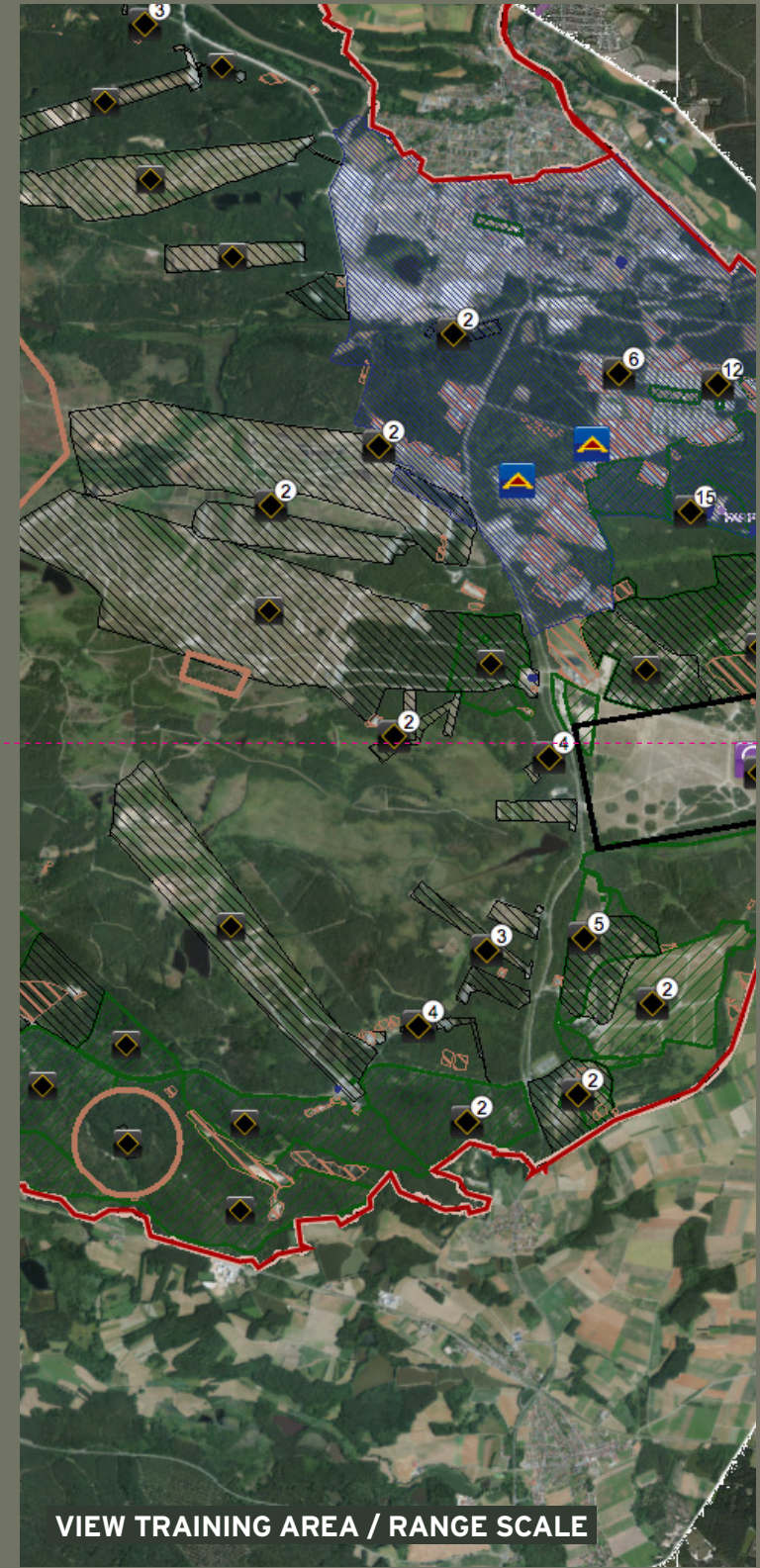
FULL SCREEN TAP IN
<https://armyrangemapper.eur.army.mil/tapin>



VIEW COCOM SCALE



VIEW NATIONAL SCALE



VIEW TRAINING AREA / RANGE SCALE



IS YOUR UNIT
TAPPED IN?
CALL TODAY

CALL 475-ITAM
OR EMAIL USAREUR.SRP.CONTACT@US.ARMY.MIL

- ACCESS MAPS
- LZ SURVEYS
- IMAGE MAPS
- SOPs
- AARs
- CAPABILITY BRIEFS
- DZ SURVEYS
- TOPO MAPS

ADD THE TAP IN MAP WINDOW TO
YOUR UNIT SHAREPOINT SITE