

Stewardship Report 2012

United States Army Europe | Integrated Training Area Management



CONTENTS

About this Report

The Stewardship Report on the U.S. Army Europe Integrated Training Area Management program is published annually and reports performance and accomplishments for all program components. The report covers the period 1 January to 31 December 2012. For further information and an electronic version of this and our previous reports, see our website:

<https://srp.usareur.army.mil>

We welcome your feedback.

Please send your comments to:

U.S. Address:

7th U.S. Army JMTC
Attn: AETT-TS (Bldg 3007)
Unit 28130
Camp Normandy
APO AE 09114-8130

German Address:

7th U.S. Army JMTC
TSAE (Geb. 3007)
Camp Normandie
92655 Grafenwöhr-Lager

Or email to: usareur.srp.contact@us.army.mil

Letter From The Commander	<u>1</u>
Foreword	<u>2</u>
Measuring Success	<u>3</u>
Ready and Forward Deployed	<u>4</u>
ITAM 2012 - What And Where?	<u>6</u>
ITAM 2012 - Project Catalog	<u>8</u>
TOP TEN	<u>11</u>
01 DATE and Combined Arms Maneuver	<u>12</u>
02 Training Area Working Groups	<u>14</u>
03 Grafenwoehr RAT Ribbon-Cutting Ceremony	<u>15</u>
04 Mobile Apps	<u>16</u>
05 Land Repair Efficiencies	<u>18</u>
06 TAP IN	<u>18</u>
07 Military Training and Biodiversity	<u>20</u>
08 Slovenia	<u>21</u>
09 Grafenwoehr PX ITAM Stewardship Display	<u>22</u>
10 Regional Support Center	<u>22</u>
SRP Workshop	<u>23</u>
Sustainable Range Awareness Events	<u>24</u>
Geographic Information System	<u>26</u>
Products and Services	<u>27</u>
2012 Notable Documents	<u>31</u>
Funding and Way Ahead	<u>32</u>

A YEAR IN PICTURES

"The Joint Multinational Training Command (JMTC) is a national strategic asset, providing world-class training and support that enables a broad range of multinational Soldier training events ensuring U.S. and partner nation forces are well-prepared for ISAF operations and future global contingencies."

Admiral James G. Stavridis
Commander, U.S. European Command and NATO Supreme Allied Commander Europe

JANUARY



ITAM met with Slovenian Army and non-military personnel to discuss environmental management of military training areas.

MARCH



ITAM and GIS are recurring topics at the quarterly Company Commander and First Sergeant Courses.

FEBRUARY



The "Nature in Defense" ITAM 25-year timeline was opened for public viewing in the Grafenwoehr PX.

APRIL



Two ITAM Mobile Applications, Soldier's Field Card and ARM Mobile, are released on iTunes.

MAY



The 2012 USAREUR Sustainable Range Program Workshop brought together over 100 stakeholders responsible for training land management.

JUNE



ITAM supported the German Army's "Military Use and Nature Conservation" workshop focused on Natura 2000 and military training land.

JULY



COL Rudacille speaks at the official opening ceremony of the Grafenwoehr Replicated Agricultural Terrain site.

AUGUST



ITAM supported the 2012 USEUCOM Combatant Commanders' Conference which discussed issues, challenges and opportunities to develop interoperability and unity of effort.

SEPTEMBER



ITAM provided GIS support to the Army Civil-Military Emergency Planning (CMEP) event in Podgorica, Montenegro.

OCTOBER



The NATO School in Oberammergau, Germany has received ITAM instructional support since 2002.

NOVEMBER



Lessons learned from the Saber Junction 2012 Exercise AAR will enhance future ITAM GIS training support.

DECEMBER



The Soldier INFOEXPO 2012 was a major event for ITAM to highlight its mission and key services.

LETTER FROM THE COMMANDER

Strong Soldiers, Strong Teams!!



I am pleased to present the annual Stewardship Report on the U.S. Army Europe (USAREUR) Integrated Training Area Management (ITAM) program for 2012.

The 7th Army Joint Multinational Training Command (JMTC) is the largest training command outside the continental United States. By integrating mission with environmental requirements and sound land management techniques, the JMTC provides world-class training to U.S. Army, Joint Services, NATO and allied units and leaders.

Training exercises, like the recently completed Saber Junction, highlight JMTC's vast training capabilities. Saber Junction built partner capacity, enhanced interoperability and focused on joint, interagency, intergovernmental, and multinational integration while improving the combat readiness of the 2nd Cavalry Regiment and allies. The 20 multinational participants of Saber Junction used over 2,500 km² of training land. This area included the Grafenwoehr Training Area, which offers the largest and most dynamic live-fire training facility in Europe, and the neighboring JMRC

Hohenfels Training Area, which provides realistic and challenging combat training up to the brigade level.

The ITAM program is responsible for providing sustainable and balanced stewardship of these Major Training Areas and the multiple Local Training Areas that extend across Europe. This stewardship is possible through the substantial investment the U.S. Army has made in the training land assets and the strong support JMTC receives from a multitude of stakeholders and partners.

JMTC's commitment to stewardship remains steadfast. The Command's intention is to provide a candid assessment of our achievements and challenges. We are always pleased to receive any feedback; ITAM contact details can be found on the contents page.

BRYAN L. RUDACILLE
COL, IN
Commanding

FOREWORD

"Everything is about relationships."

Gen. Raymond T. Odierno,
Chief of Staff of the U.S. Army

Relationships frame the first principle of the U.S. Army's Sustainable Range Program - Integrated Management. The successes of the ITAM program in Europe over the last 27 years have only been possible through the close partnerships with the Garrison Environmental Offices, German Forestry and Environmental Agencies, and other key stakeholders. These partnerships are critical for pioneering best management practices and innovative technologies to meet USAREUR's training land management challenges.

2012 brought past land management challenges back to the fore - the USAREUR ITAM program went back to its roots in support of an Army re-emphasis on conventional maneuver, or "Combined Arms Maneuver". Combined Arms Maneuver, which includes forces maneuvering over extended distances to seize, occupy, and defend land areas, was the original genesis of the ITAM program. In support of this Army training goal, a number of high payoff ITAM projects were executed in 2012, and there is much work still to be done to maximize the accessibility, availability, and capability of USAREUR maneuver space.

ITAM will continue to strive for sustained adaptability of USAREUR's training land platform in order to ensure the complex training requirements of the future are proactively supported. This will only be possible through continued strengthening of partnerships - not only with USAREUR's training area management stakeholders, but also with partner nation subject matter experts.

This report provides a snapshot of the program and, more importantly, attempts to address ITAM's focus for the future. I hope you find our latest Stewardship Report constructive; we are always pleased to receive feedback.



Nathaniel Whelan
USAREUR ITAM Program Manager

MEASURING SUCCESS ITAM'S EFFECTIVENESS

The ultimate goal of the ITAM program is to support the training mission. Many of the program's 2012 accomplishments are discussed and illustrated in the following pages.

How effective was the program? Below are the five components of the ITAM program and what each one should accomplish in support of the training mission. Beneath are metrics that demonstrate the effectiveness in 2012 of meeting or exceeding these goals.

	TRAINING REQUIREMENTS INTEGRATION (TRI)	RANGE AND TRAINING LAND ASSESSMENT (RTLA)	LAND REHABILITATION AND MAINTENANCE (LRAM)	SUSTAINABLE RANGE AWARENESS (SRA)	GEOGRAPHIC INFORMATION SYSTEM (GIS)
OBJECTIVES	<ul style="list-style-type: none"> Ensure sustained access to training lands that support realistic training conditions. Quantify training land carrying capacity, and provide military trainers and land managers with quality information with which to make sound decisions. 	<ul style="list-style-type: none"> Assess training lands by identifying issues (e.g. erosion degradation) and recommend corrective actions. Provide Command-level information to assist with force structure and stationing decisions at Command and Department of Army (DA) levels. 	<ul style="list-style-type: none"> Sustain overall condition of installation lands to ensure long-term military viability. Increase available and accessible maneuver land. Enhance realism of training environment to replicate the operational environment. 	<ul style="list-style-type: none"> Educate land users and provide operational awareness for environmental professionals to ensure no net loss of training capability. Support High Payoff Building Partner Capacity activities. 	<ul style="list-style-type: none"> Create, manage, and distribute authoritative standardized spatial information, products, and services for the execution of training strategies and missions on USAREUR ranges and training lands.
ACCOMPLISHMENTS	<ul style="list-style-type: none"> Supported shifting training requirements with greater focus on Combined Arms Maneuver by placing increased emphasis on projects that enhance maneuver space and trails in support of conventional mounted maneuver. Integrated Soldier feedback and lessons learned from S3 / G3 conferences, Company Commander and First Sergeant Courses, Training Area Working Groups, and other forums into products and services. 	<ul style="list-style-type: none"> Conducted relook of trend analysis and site rehabilitation prioritization approach, including evaluation of current land condition monitoring methodologies (i.e. field plots, satellite imagery), and recommended way forward. Conducted mapping site visits to foreign training areas in Bulgaria, Slovenia, and Italy in support of training exercise reconnaissance and terrain feature capture. Conducted historic analysis on maneuver trends at JMRC Hohenfels - results helped define unused, overgrown mounted maneuver trails that would enhance connectivity between maneuver corridors. 	<ul style="list-style-type: none"> Supported 18 projects maintaining or enhancing vast erosion control infrastructure at enduring MTAs and LTAs. Cut ribbon for the Grafenwoehr Replicated Agricultural Terrain site. Units have cited the visual and physical realism and complexity of the site in comparison to the operational environment. Increased Grafenwoehr Training Area ITAM program reliance on use of in-house labor and equipment, which significantly lowered land repair and reconfiguration costs for five projects. 	<ul style="list-style-type: none"> Disseminated >53.5K Soldier's Field Cards throughout Command, detailing environmental and safety guidelines. Provided instructional support to events reaching 30 multinational partners, including numerous NATO/PfP events. Supported numerous public and Command outreach initiatives, including the Grafenwoehr PX Exhibit and Community Relations Event, Armed Forces Network infomercials, and other community events. 	<ul style="list-style-type: none"> Disseminated 3.5K training area special maps, 2K ITAM Viewers, and 1K raised relief maps and deployed one new mapping kiosk to Regional Training Support Division Italy. Produced one final and five draft Military Installation Maps and supported 620 standard and 115 custom map requests (81% from units) and 7K user visits from 2.5K unique users to the Army Range Mapper (ARM) website. Provided 23 GIS briefings / training sessions at Army workshops and events and conducted 17 site visits to USAREUR and host nation training areas for GIS data collection and validation. Coordinated eight new aerial and satellite imagery acquisition projects covering USAREUR training areas and ranges.

READY AND FORWARD DEPLOYED



► Visit USAREUR ITAM on Facebook



Officers going through an obstacle course during the USAREUR's Best Junior Officer Competition (BJOC) in Grafenwoehr, Germany.



Map check during Saber Junction 2012, training the 2CR and 1,800 multinational partners.



U.S. ARMY EUROPE (USAREUR)

U.S. Army Europe trains and leads Army Forces in support of U.S. European Command and Headquarters, Department of the Army by:

- Training and preparing Unified Land Operations for global employment.
- Strengthening alliances and building partner capacity and capability.
- Providing Army Service Component Command and Title 10 support.
- Continually seeking to improve the readiness and quality of life of our Soldiers, Army families and Civilian workforce.



TRAINING SUPPORT ACTIVITY EUROPE (TSAE)

TSAE serves as the headquarters for USAREUR's Sustainable Range Program. The TSAE mission is to identify, acquire, manage and sustain the resources required to support training within the USAREUR area of responsibility. Under TSAE, 15 Training Support Centers provide one-stop shops for the Soldier.



JOINT MULTINATIONAL TRAINING COMMAND (JMTC)

Headquartered in Grafenwoehr, Germany, the 7th Army JMTC is the largest training Command outside the continental United States. JMTC's vast ranges, simulation centers, classrooms and facilities provide realistic and relevant training to U.S. Army, Joint Services, NATO and allied units and leaders. ITAM ensures that JMTC training resources continue to remain available, accessible and ready to support the mission.

JMTC's Mission:

7th Army JMTC provides world-class training of forces and leaders in order to dominate Unified Land Operations in support of USAREUR's global requirements and USEUCOM's Strategy of Active Security.



SUSTAINABLE RANGE PROGRAM (SRP)

The ITAM program and the Range and Training Land Program (RTLTP) comprise the U.S. Army's Sustainable Range Program. The mission of the SRP is to maximize the capability, availability, and accessibility of ranges and training land to support doctrinal training, mobilization, and deployments.



INTEGRATED TRAINING AREA MANAGEMENT (ITAM)

ITAM is a key component of the U.S. Army's commitment to training land sustainability and environmental stewardship. The ITAM program provides a uniform training land management capability across the Command.

ITAM COMPONENTS

- Training Requirements Integration (TRI) provides training support procedures that integrates training requirements with management of natural and cultural resources.
- Range and Training Land Assessment (RTLTA) characterizes and monitors an installation's natural resources, geospatially and temporally.
- Land Rehabilitation and Maintenance (LRAM) implements preventive and corrective land repair projects that ensure availability of training lands.
- Sustainable Range Awareness (SRA) promotes visibility of environmentally sensitive issues and instills a stewardship ethic among unit commanders, ground troops and neighboring communities.
- Geographic Information System (GIS) is a foundational element of SRP. GIS provides accurate, complete and standardized spatial data. GIS data and products adhere to Federal, DoD and Army spatial data standards.

Sustainable Range Program Principles

Information Excellence

Ensures the U.S. Army is using the best available information and science to support its ranges and land assets. Information excellence also ensures that the U.S. Army has an increased understanding of the environmental impacts of live-fire training and a user assessment of the doctrinal implication of U.S. Army transformation that affects live-fire training.

Integrated Management

Ensures that management is functioning correctly, such that ranges and land assets are integrated effectively into supporting the training mission. As indicated in the name, the ITAM program works cooperatively with multiple stakeholders, such as the Training Command, the Garrison Command, the host nation military, the local environmental authorities, and the surrounding local population.

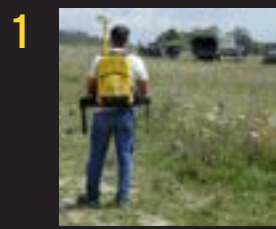
Outreach

Provides an outlet for the U.S. Army to explain to the public why training activities are essential to the U.S. Army's mission and improves the U.S. Army's understanding of public perception of, and concerns about, the U.S. Army training and range operations.

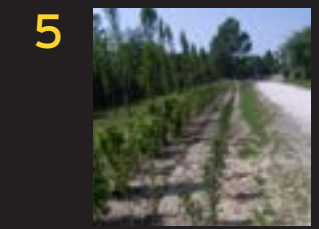
ITAM 2012 WHAT AND WHERE?

Europe

- Full ITAM Support including Land Repair
- Partial ITAM Support including GIS
- ITAM Event Support including Building Partner Capacity



1 STUTTGART
Military Installation Map Creation; GIS / GPS Mapping Site Visit



5 CAO MALNISIO
Vegetation Sustainment



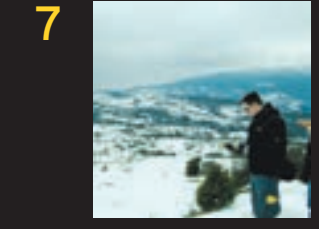
2 BAUMHOLDER
Military Installation Map Production



6 OBERAMMERGAU
Instructional Support to the NATO School



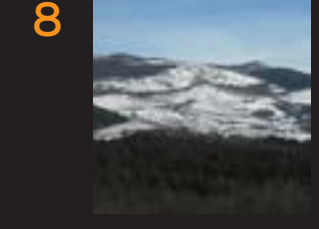
3 WIESBADEN
Military Installation Map Production



7 OTHER ITALY
LTAS Repair and Upgrade of Frida Drop Zone; Aerial Imagery



4 ANSBACH
Military Installation Map Production; GIS / GPS Mapping Site Visit



8 LJUBLJANA
Building Partner Capacity Event

9



PODGORICA
Building Partner Capacity Event

10



OTHER EASTERN EUROPE TAs
Military Installation Map Production; Satellite Imagery

11



TBILISI
Building Partner Capacity Event

12



GRAFENWOEHR
Maneuver Area Rehabilitation; Construction of Troop Marching Trail Walking Bridge; Repair and Reconfigure Sod Strip Drainage; Upgrade and Extension of Troop Marching Trail; Replicated Agricultural Terrain; Rehabilitation and Decompaction of Mortar Firing Points; Military Installation Map Production; GIS / GPS Mapping Site Visit; SRA events

13



GRAFENWOEHR
2012 USAREUR SRP Workshop

14



JMRC HOHENFELS
Mitigate Safety Obstacles; Erosion Control Areas A, B, and C; Tactical Valley Crossing Repair; Maneuver Corridor Repair



Civil-Military Emergency Preparedness

Civil-Military Emergency Preparedness (CMEP) supports capacity development and improved Building Partner Capacity by developing and encouraging civilian and military cooperation. It also provides multinational force compatibility to plan for humanitarian response to all forms of disaster (natural and technological).

ITAM 2012 PROJECT CATALOG

Strong support from both Department of the Army and U.S. Army Europe enabled USAREUR ITAM to execute multiple high-impact projects. ITAM Coordinators and Training Support Center staffs were responsible for coordination and management of 17 land management projects covering most of USAREUR's training areas. The project catalog provides a broad overview of how ITAM is increasing the availability, accessibility and capability of USAREUR's training areas.

“ Unit training and leader development are the Army's life-blood”

The Army's principles of unit training:
FM 7-0 Training Units and Developing Leaders for Unified Land Operations



Mitigate Safety Obstacles
A range of LRAM best practices, including calcium chloride application to 40 km of maneuver trails, were used in order to minimize maneuver safety obstacles and migration of fugitive dust off-post.

JMRC Hohenfels
LRAM



Erosion Control Areas A, B, and C
The safety and accessibility of the maneuver area was sustained by applying various standard fixes to numerous large gullies that have formed throughout sub-training areas Alpha, Bravo and Charlie. Maintenance on several maneuver trails was also conducted in the same areas.

JMRC Hohenfels
LRAM



Tactical Valley Crossing Repair
Hardened tactical valley crossings in low spots of maneuver corridors were installed or repaired throughout the box.

JMRC Hohenfels
LRAM



Maneuver Corridor Repair
Hardened crossings near Urban Operations area Uebungsdorf are under repair to allow continued access to the maneuver area. Maneuver crossings would become unusable if left unattended and would pose a safety risk to Soldiers, military personal and vehicles.

JMRC Hohenfels
LRAM



Repair and Upgrade of Frida Drop Zone
Project removed large rocks (0.4 m in diameter) and leveled five craters (1.5 m deep) and multiple depressions in order to eliminate drop zone safety hazards to 173d ABCT.

Frida Drop Zone
LRAM



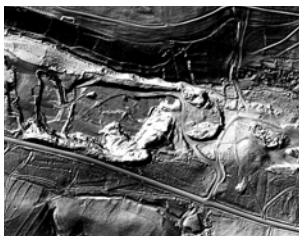
Vegetation Sustainment
Bushes and trees planted along the southern training area boundary were sustained by watering and maintenance in order to provide concealment and minimize fugitive dust migration.

Cao Malnisio, Italy
LRAM



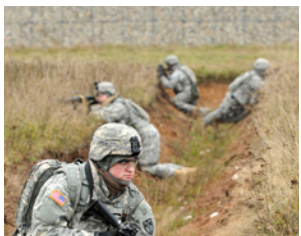
Aerial Imagery
0.25-m true color aerial orthoimagery was procured or received from Corps of Engineers for the following training areas: Villabassa LTA, Dobbiaco Range, and Ponticello Range.

Italy
GIS



Light Detection and Ranging (LIDAR)
Updated LIDAR digital elevation and terrain models were generated for Grafenwoehr and JMRC Hohenfels training areas. LIDAR provides high resolution (0.5 m) elevation data which supports SRP development and land repair projects and training exercises.

Major Training Areas
GIS



Replicated Agricultural Terrain
Vegetation was planted and additional maintenance conducted on the 4 ha of rugged terrain immediately south of the Urban Operations Site, replicating agricultural terrain features found in the operational environment.

Grafenwoehr
LRAM



Maneuver Area Rehabilitation - Reseeding
Project covered procurement of bulk materials (e.g. top soil, seed gravel, etc.) and signage in support of in-house (DPW Buildings and Grounds Division) execution. Work supported maneuver land repair and other projects on an "as needed" basis.

Grafenwoehr
LRAM



Troop Marching Trail Walking Bridge
A 4-m walking bridge was procured in order to connect the northern segments of the Troop Marching Trail.

Grafenwoehr
LRAM



Upgrade and Extension of Troop Marching Trail
To meet ruck march requirements, 3.5 kms of Troop Marching Trail were upgraded and extended into the western portions of the training area.

Grafenwoehr
LRAM



Product (Large Format) Reproduction

Maps were reproduced in large format (e.g. scale 1:25K) for distribution through the Training Support Centers (TSCs) and Range Operations. Other ITAM Training Support products were also produced, including Soldier's Field Cards, Leader Handbooks, ITAM Viewers, and Installation Specials.

USAREUR GIS



Maneuver Trail Repair

A rugged impassable 4-km mounted maneuver trail was repaired to connect the southern LTA section to the main east-west access road. Project also repaired trails in area 8S and along the south and east boundaries of the LTA.

Boeblingen LTA LRAM



Military Installation Map (MIM) Production

Army standard MIMs were created for TSC Wiesbaden, TSC Stuttgart, TSC Baumholder, TSC Ansbach and Grafenwoehr Training Area. Final MIMs will be reproduced by the National Geospatial Intelligence Agency (NGA) and made available through Army supply chain channels.

USAREUR GIS



GPS Mapping

Data from a GPS mapping site visit was used to produce military installation maps in support of USAREUR exercises for Novo Selo Training Area and to assist in scoping potential ITAM land repair projects.

Novo Selo, Bulgaria GIS



Outreach Events

ITAM actively participated in over 50 sustainable range awareness events in 2012, including 25 USAREUR-level events, seven Army-level events, and over 20 NATO or multinational events. Events provided outreach on environmental training and the Command's commitment to training area stewardship.

USAREUR GIS

TOP TEN



2012 was a busy year for ITAM – the following provides a selection of highlights from across a wide spectrum of initiatives ranging from cutting-edge technology innovations to moving dirt.

- > **01** DATE and Combined Arms Maneuver
- > **02** Training Area Working Groups
- > **03** Grafenwoehr RAT Ribbon-Cutting Ceremony
- > **04** Mobile Apps
- > **05** Land Repair Efficiencies
- > **06** TAP IN
- > **07** Military Training and Biodiversity
- > **08** Slovenia
- > **09** Grafenwoehr PX ITAM Stewardship Display
- > **10** Regional Support Center

DATE and Combined Arms Maneuver

ITAM'S ROLE

The ITAM program is returning to its roots. Under the Decisive Action Training Environment (DATE), Army training is re-emphasizing conventional maneuver, or "Combined Arms Maneuver". ITAM must provide the training land platform to support Combined Arms Maneuver, which includes forces maneuvering over extended distances to seize, occupy, and defend land areas.

ITAM's 2012 and future land repair, maintenance, and reconfiguration priorities focus on the concept of sustained adaptability which maximizes the accessibility, availability, and capability of the USAREUR maneuver platform.

Participants



1. Repair projects maximize the availability and accessibility of maneuver trails throughout the Grafenwoehr and JMRC Hohenfels Training Areas.
2. A German Army Leopard II tank, assigned to 104th Panzer Battalion, scans the battlefield during Saber Junction 2012 in Hohenfels, Germany.
3. Erosion control and other land maintenance projects eliminate obstacles and enhance corridors, promoting realistic maneuver training.
4. Stryker vehicles assigned to the 2nd Cavalry Regiment conducted cross-country maneuvers during Saber Junction 2012.



WHAT IS SABER JUNCTION?

Saber Junction is the second Decisive Action Training Environment exercise in Europe and the first to feature the Stryker-based 2nd Cavalry Regiment. It is also the first major exercise in more than 20 years to expand beyond the borders of the Army's Major Training Areas (MTA's) in southern Germany.

The exercise highlighted the U.S. Army's Decisive Action Training Environment, which prepares U.S. and multinational Soldiers for land operations through the simultaneous combination of offensive, defensive and stability operations appropriate to the mission and the environment and promotes interoperability with partner nations.

Saber Junction included more than 1,800 foreign personnel from 19 partner nations.

"The DATE is a source for conditions in the operational environment and the structure of opposing forces."

Army Training Strategy, 2012



Saber Junction,
October 2012
Watch it on YouTube

02

Training Area Working Groups

Training Area Working Groups (TAWG) are critical for meeting the Sustainable Range Program's first tenet: Integrated Management. The TAWG intent is to establish and maintain strong communication between the host nation agencies, DPW, USAREUR SRP, and the tactical community. The TAWG is chaired by the respective Training Area ITAM Coordinators and typically meet on a quarterly basis.

2012 highlights of TAWG meetings were: providing Command recommendations on co-use agreements, off-limits area management, activity and task prioritization, and deconflicting training events with projects.

2012 Meetings

Grafenwoehr Range and Training Area Working Group:
7 March, 6 June, 19 September, 5 December

JMRC Hohenfels TAWG:
18 January, 15 March, 23 May, 18 July, 27 September, 29 November



SUSTAINABLE INSTALLATION

Develop modern, sustainable and increasingly energy-efficient infrastructure that meets all current and future mission requirements.

COMMUNITY OF EXCELLENCE

Develop a Community of Excellence where Soldiers and families thrive while being good neighbors with our German hosts.

WORLD-CLASS TRAINING

Provide U.S. Forces world-class training and training support necessary to dominate in Unified Land Operations anytime and anywhere.

BUILD MULTINATIONAL CAPACITY

Build defense relationships with foreign defense forces that promote specific U.S. security interests, develop allied and friendly military capabilities, and provide U.S. Forces with peacetime and contingency access to host nation.



03

Grafenwoehr RAT Ribbon-Cutting Ceremony

The Grafenwoehr Replicated Agricultural Terrain (RAT) was officially opened on **19 July 2012**. COL Rudacille, JMTC Commander, provided the keynote and was assisted by representatives from ITAM, German Federal Forestry, Range Operations, and the Directorate of Public Works in cutting the ribbon to this innovative training site which will increase complexity of the Grafenwoehr Training Area.



Replicating land use and land cover, to the greatest extent practicable, is a fundamental approach for creating a realistic training environment that is similar to the operational environment. A core concept of land reconfiguration is to mold, where possible and within constraint, the forest, open areas, roads, and trails to a state that better supports a realistic training environment.

"...The training that we will accomplish at this [RAT] site between now and when we deploy in October will save lives."

702nd Explosive Ordnance Disposal (EOD)



Grafenwoehr RAT site includes the following terrain complexities:

- 4 ha of tilled and terraced agricultural fields
- Irrigation ditches with dimensions as those found in the operational environment
- Unimproved single-lane earthen trail network
- Farm complex and surrounding wall
- No impact to existing training capabilities of the Urban Operations site
- Minimal cover and concealment provided by a few trees and chest-high grass
- Within sight of high ground that supports potential enemy attack
- Provides 360-degree network of approach trails in support of mounted and dismounted maneuver.

Mobile Apps

USAREUR ITAM made significant progress in 2012 deploying mobile training support applications. The following applications are aligned with the Army's intent to leverage technology to make learning continual, not episodic, and provide **Point of Need Learning 24x7.**



USAREUR Environmental Officer Guide

The newest ITAM app! Includes valuable reference material targeting unit environmental officers, including the You Spill, You Dig brochure, Garrison Spill Response Plans, guidance documents, risk matrix, and Material Safety Data Sheets (MSDS).

The application complements the USAREUR Environmental Officers training which is designed to educate garrison and unit personnel on the impacts their jobs may have on the environment and what they are required to do to ensure that their organization stays in compliance with environmental laws and regulations, especially in regards to host nation requirements.



You Spill, You Dig



Garrison Spill Response Plans



Material Safety Data Sheets (MSDS)



Soldier's Field Card

Mobile app includes training area maps, safety information and standard guidelines for ensuring continued environmental stewardship. Sections are training area and language specific and cover the following topics: Medical Evacuation Request, Emergency Numbers and Frequencies, Spill Prevention / Response (including HAZMAT / POL), Vehicle Movement, Washrack Procedures, Training Areas DOs and DON'Ts, Wildlife, Policing Training Areas, IED / UXO Report, Camouflage, Weather, Safety Risk Assessment Model, Fire Prevention, and Orientation / Training Area Maps.



Soldier's Field Cards



Maps



Army Range Mapper Mobile

The Army Range Mapper Mobile includes all USAREUR training areas, training area gate locations, Esso gas stations, and standard topographic or image-based maps. It supports navigating to those hard-to-find training area gates - includes gate to gate routing!



COVERS THE FOLLOWING TRAINING AREAS:

- Grafenwoehr Training Area
- JMRC Hohenfels
- TSC Ansbach
- TSC Bamberg
- TSC Baumholder
- TSC Heidelberg
- TSC Kaiserslautern
- TSC Kosovo
- TSC Mannheim
- TSC Romania
- TSC Schweinfurt
- TSC Stuttgart
- TSC Wiesbaden
- Slunj TA (Croatia)

Land Repair Efficiencies

The ITAM Land Rehabilitation and Maintenance (LRAM) component achieved significant cost efficiencies across USAREUR in 2012. Through outstanding support from USAREUR's training land stakeholders, including German Federal Forestry, garrison DPWs, and tactical units, ITAM was able to leverage labor and equipment to cut LRAM costs by over 50% compared to past projects.

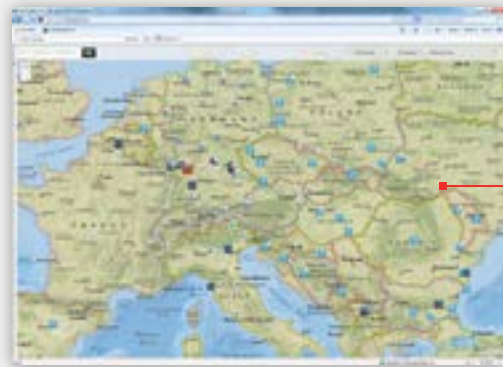
LRAM projects at Grafenwoehr Training Area are a shining example of these efficiencies. A team effort between ITAM, DPW, and Federal Forestry produced a number of outstanding projects, to including the Replicated Agricultural Terrain Site, Rugged Terrain Trail and enhancements to the Troop Marching Trail. These integrated projects will be the way forward for ITAM in a fiscally constrained environment.

06

TAP IN

TAP IN is a NIPR web mapping application similar to Google Maps. Users can search training support facility locations, view facility-specific information, download PDFs (e.g. SOPs, handbooks, access maps), and query real-time and future Range Facility Management Support System (RFMSS) scheduling data for all USAREUR training facilities.

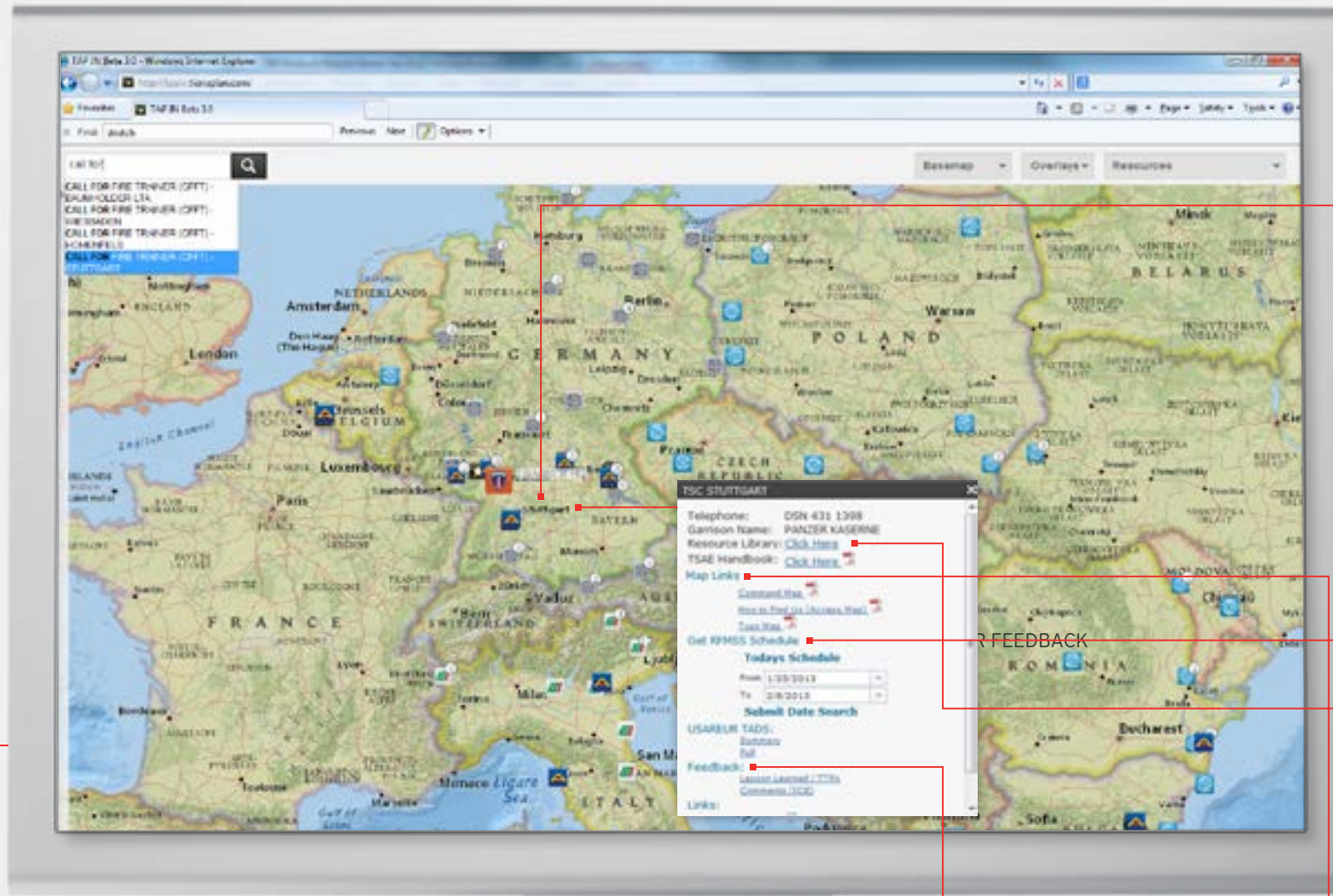
TAP IN can be hosted on any CAC web portal or SharePoint site and can be scaled to satisfy unique user requirements.



> HOME

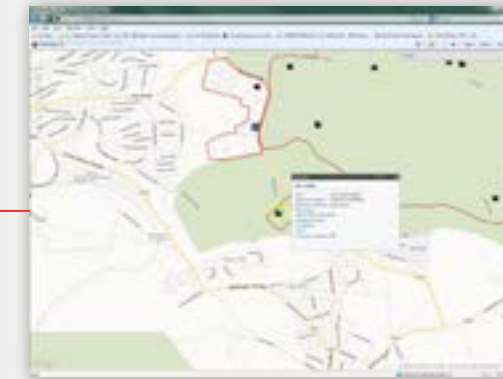
Users can view TAP IN one of several ways:

- Visit > <https://armyrangemapper.eur.army.mil/tapin>
- View a web page with an embedded TAP IN



> INFORMATION WINDOW

> ZOOM TO FACILITY



> RANGE AND FACILITY SCHEDULE

Today's Schedule (RFMSS) as of Tuesday, January 15, 2013 5:07:27 PM

Installation/Unit	Facility	Status	Sch. End
STUTTGART SFG 1-10	10-25M ZERO RANGE	UNIT FIRING, UNRESTRICTED	13-DEC-12 17:00
STUTTGART SFG 1-10	10-25M ZERO RANGE	UNIT FIRING, UNRESTRICTED	13-DEC-12 16:00
STUTTGART SFG 1-10	CALL FOR FIRE TRAINER 1:12 VERSION - STUTTGART RESERVED	RESERVED	14-DEC-12 16:00
STUTTGART 554TH MP	CHBT IN CITY FAC	RESERVED	13-DEC-12 16:00
STUTTGART SFG 1-10	GRENADE LAUNCHER RANGE	RESERVED	14-DEC-12 16:00
STUTTGART 554TH MP	INDOOR RANGE	UNIT FIRING, UNRESTRICTED	13-DEC-12 16:00
STUTTGART BOEHLINGEN POLIZEI/MOUT SITE		RESERVED	13-DEC-12 16:00

> RESOURCE LIBRARY



> USER FEEDBACK



> PDF MAPS AND DOCUMENTS



Military Training and Biodiversity

- USAREUR and many partner nations have initiated successful efforts to increase awareness of the positive relationship between military land use and biodiversity.
- Many military training areas are "islands of biodiversity".
- 90% of USAREUR's training areas in Germany are part of the European Union's Natura 2000 Network.

Challenge

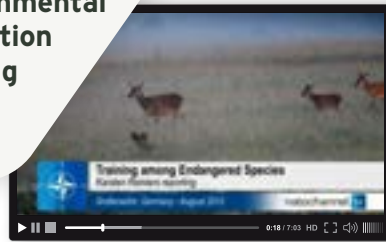
- Environmental Regulations ↑
- Training Intensity ↑
- Perception ?



Player



Environmental Protection Working Group

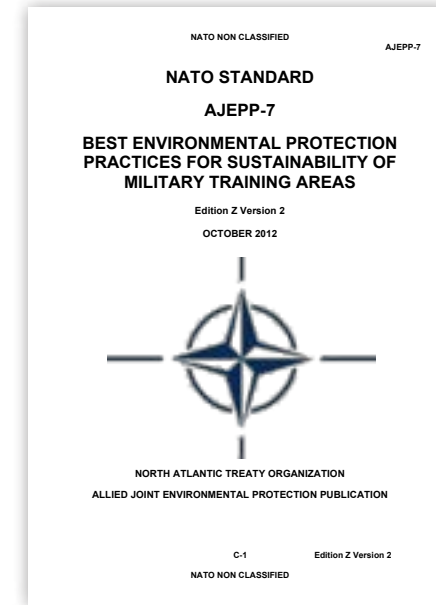


“...most of the military areas, and especially those used for training and testing, contain significant, even spectacular, amounts of natural and seminatural habitats and landscapes, with corresponding abundances of wildlife.”*

“Sometimes they [military areas] are among the richest and most important sites for biodiversity in their country.”*

* LIFE, Natura 2000 and the military; European Commission Environment Directorate General; 2010

Achievements



ITAM supported the first U.S. European Command, Joint Multinational Training Command (JMTC) and U.S. Embassy Office of Defense Cooperation workshop conducted in Vrhnika, Slovenia on 22-24 February 2012. Slovene Army and non-military representatives from federal and regional environmental agencies participated in this event.

The workshop, funded and organized by U.S. European Command (EUCOM), targeted Slovenian Army training officers and Slovenian non-military personnel responsible for environmental management of military training areas. Key objectives of the workshop included information exchange and capacity building in the area of environmental considerations in military activities, sustainable management of military training ranges, and environmental outreach for mission sustainability. This event set the foundation for future Slovene-ITAM initiatives, to include 2013 events.



TOP
TEN

09

Grafenwoehr PX ITAM Stewardship Display

A U.S. Army exhibit focusing on the history of ecological management of the Grafenwoehr Training Area was on display from January to April 2012 in the Grafenwoehr PX / Commissary building.

EXCHANGE



Nature's Defense: German-American Environmental Stewardship of the Grafenwoehr Training Area uses historical maps, aerial imagery and photos to trace the evolution of land management within the borders of Grafenwoehr Training Area from 1910 to the present.

ITAM produced the exhibit to highlight the partnership between the U.S. Army and the German local and federal governments in conserving Grafenwoehr's land for both military training and the natural environment. The exhibit also highlights the unique plant and animal species that thrive in the training area, many of which are endangered or have become extinct in other parts of Germany.

All the historical maps and aerial imagery used in the display came from the archives of ITAM's Geographic Information System (GIS) office in Grafenwoehr, which maintains geospatial data for all USAREUR training areas and ranges.



<http://www.eur.army.mil/jmtc>

10

Regional Support Center

The Grafenwoehr Sustainable Range Program Regional Support Center (SRP RSC) provides a "hub and spoke" GIS support network for all USAREUR training areas and ranges. The RSC brings years of experience and established procedures to the ITAM program.

The Grafenwoehr SRP RSC provides geospatial support to over 180 U.S. and foreign training areas and Forward Operating Sites. The primary function of the RSC is to ensure a standard GIS capability and to gain efficiencies through centralized support. The RSC focuses on the development of standard GIS databases and provides GIS products and applications to SRP and other mission support offices. Spatial data is provided through many types of media: paper and digital maps, the Army Range Mapper internet mapping application, and the ITAM Viewer DVD desktop application that allows the user to access the GIS database.



STEWARDSHIP REPORT 2012

SRP WORKSHOP

The **2012 USAREUR SRP Workshop** included over 30 presentations / training seminars attended by 125 attendees. The agenda commenced with general sessions providing USAREUR program updates, followed by breakout sessions focusing on specific project lessons learned and SRP success stories. Concurrent technical training sessions focusing on GIS/GPS and other technologies were also offered to all attendees.

Agencies represented included TCM-L, JMTc, Garrisons, Corps of Engineers, USAREUR units, USAREUR G3, USAREUR G8, German Federal Forestry, and the Bavarian Geological Service. Other multinational attendees included representatives from Slovenia, Austria, Norway, and the Czech Republic.



**2013
SRP Workshop**

April 22 - 24
Tower View Conference Center
Grafenwoehr

SUSTAINABLE RANGE AWARENESS EVENTS

Sharing with ITAM's Partners

The ITAM program continued to support a variety of awareness events throughout USAREUR in 2012. ITAM's participation ranged from event hosting to providing presentations and/or training sessions.



Date	Event	Location	Participants	Level	Type
1 January - 1 April	Grafenwoehr PX Timeline Display	Grafenwoehr, Germany	1,000+	Public	SRA
27 January	ITAM Viewer Training Class	Grafenwoehr, Germany	15	Units	GIS
30 January - 3 February	RTSD Schweinfurt OIP	Schweinfurt, Germany	15	Command	ITAM
10 February	Germersheim Map Depot	Germersheim, Germany	6	SME	GIS
7 March	Company Commander and First Sergeant Course	Grafenwoehr, Germany	65	Units	ITAM
28 March	USAREUR EQCC	Heidelberg, Germany	30	Command	ITAM
14 - 16 May	USAREUR SRP Workshop	Grafenwoehr, Germany	120	Command	ITAM
29 May	ITAM Interview on Armed Forces Network	Grafenwoehr, Germany	1,000+	Public	SRA
11 July	Company Commander and First Sergeant Course	Grafenwoehr, Germany	65	Units	ITAM
19 July	Grafenwoehr RAT Ribbon-Cutting	Grafenwoehr, Germany	30	Command	ITAM
26 July	Grafenwoehr Community Huddle	Grafenwoehr, Germany	250	Public	SRA
26 July - Present	Rose Barracks Timeline Display	Rose Barracks, Germany	700+	Public	SRA
15 August	TAP IN Beta Testing (12th CAB)	Ansbach, Germany	20	Units	GIS
18 - 20 September	IMCOM-E Site Visit	Sembach, Germany	10	Command	ITAM
19 September	Company Commander and First Sergeant Course	Grafenwoehr, Germany	65	Units	ITAM
16 October	Polish Land Forces Command Delegation	Grafenwoehr, Germany	10	Command	ITAM
17 October	TAP IN Beta Testing (173d ABCT)	Vicenza, Italy	20	Units	GIS
5 - 8 October	GPS Field Mapping	Novo Selo, Bulgaria	4	SME	GIS
5 - 9 October	RTSD West OIP	Baumholder, Germany	15	SME	ITAM
22 - 25 October	SRP GIS Coordination Visits	Germany RTSDs	50	SME	GIS
13 December	Rose Barracks INFOEXPO	Rose Barracks, Germany	500+	Command	All
18 December	ITAM Olympics	Grafenwoehr, Germany	25	SME	ITAM
24 January	HQDA Land Repair User Working Group	Grafenwoehr, Germany	20	SME	ITAM
6 - 10 February	Range Managers Toolkit Training	Camp Lejeune, NC	30	SME	All
10 - 11 April	SRP PMR (VTC)	Fort Eustis, VA	25	Command	ITAM
20 - 24 August	SRP PMR	Fort Eustis, VA	25	Command	ITAM
7 September	ASA IEE Brief	Grafenwoehr, Germany	20	SME	ITAM
21 - 24 February	ITAM Sustainability Workshop	Ljubljana, Slovenia	30	Multinational	All
4 - 6 May	EUCOM / AFRICOM Defense and Intel Users Group	Stuttgart, Germany	50	SME	GIS
7 - 8 May	EUCOM / AFRICOM GI&S Working Group	Stuttgart, Germany	35	SME	GIS
31 July - 3 August	CMEP Workshop	Tbilisi, Georgia	35	Multinational	GIS
22 August	Combatant Commanders' Conference	Grafenwoehr, Germany	50	Multinational	All
17 - 20 September	CMEP Workshop	Podgorica, Montenegro	35	Multinational	GIS
25 September	USAG Grafenwoehr COMREL	Grafenwoehr, Germany	50	Multinational	All
14 March	Federal Forestry Coordination Meeting	Nuremberg, Germany	6	Multinational	LRAM
26 - 28 March	NATO Environmental Training Specialist Team	Ingolstadt, Germany	10	Multinational	All
9 May	NATO School	Oberammergau, Germany	35	Multinational	GIS
11 - 14 June	Bundeswehr "Military Use and Conservation" Workshop	Mannheim, Germany	70	Multinational	All
23 - 27 July	ESRI Users Conference	San Diego, CA	900	Public	GIS
18 October	NATO School	Oberammergau, Germany	35	Multinational	GIS
19 - 20 November	ESRI Developer Summit	Berlin, Germany	250	Public	GIS
10 - 14 December	NATO Environmental Protection Working Group	Brussels, Belgium	45	Multinational	All



USEUCOM COMBATANT COMMANDERS' CONFERENCE

ITAM supported the 2012 USEUCOM Combatant Commanders' Conference, which took place 22 - 23 August 2012, at the Joint Multinational Training Command in Grafenwoehr, Germany. This event brought Europe's combatant commanders and senior enlisted advisors together to discuss issues, challenges and opportunities to develop interoperability and unity of effort. Over 50 general officers (1 to 4 star) and senior enlisted advisors from the EUCOM AOR attended.

Participants



COMPANY COMMANDER AND FIRST SERGEANT COURSE

ITAM continued to provide support to the quarterly Company Commander and First Sergeant (CCFS) Course hosted by the Combined Arms Training Center in Rose Barracks, Germany. CCFS prepares each officer and senior noncommissioned officer scheduled for assignment as company commander or first sergeant for their duties with a program of indoctrination to USAREUR policy, selected military subjects related to command, and information briefings to support the success of their command tour in USAREUR.

GEOGRAPHIC INFORMATION SYSTEM

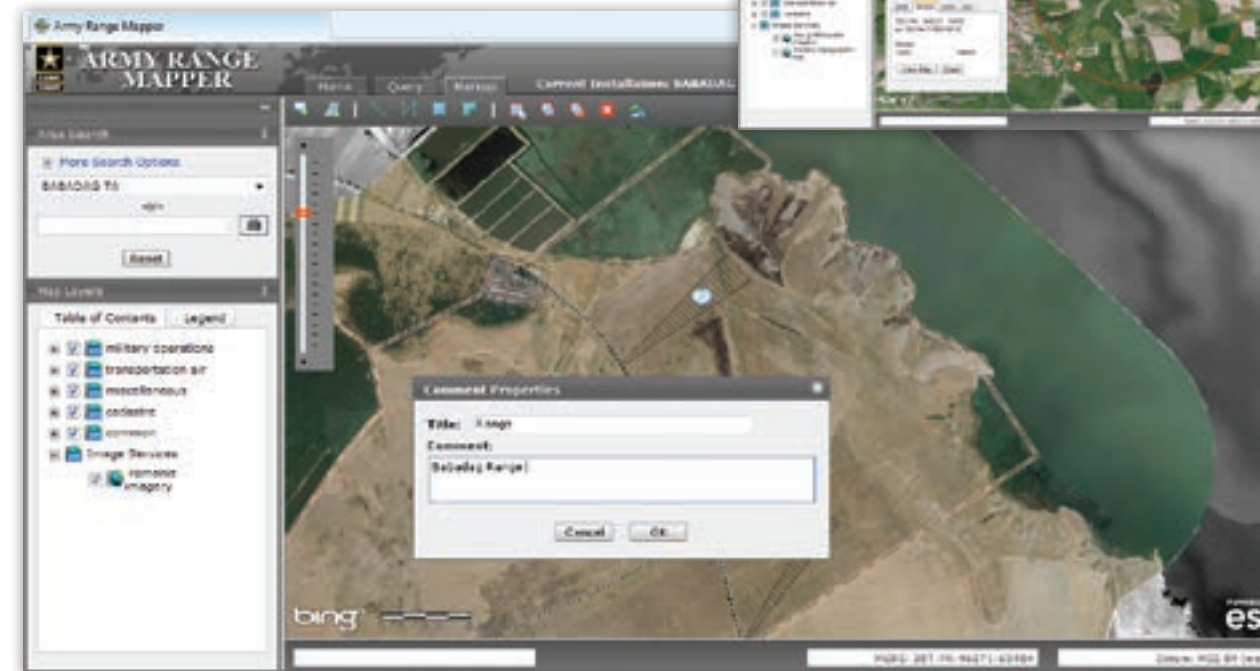
AUTHORITATIVE GEOSPATIAL RESOURCES

SRP GIS achieves information dominance by delivering the most accurate and complete spatial data sets through user-friendly products and applications. SRP GIS, spearheaded by the ITAM program, provides a standardized geospatial situational awareness of the installation battle space to support all SRP projects and initiatives. The SRP GIS geospatial repository is the USAREUR authoritative source for training area and range geospatial data.

The products shown on the following pages are produced and distributed through the USAREUR Training Support Centers and the Grafenwoehr SRP Regional Support Center free of charge to U.S. Soldiers and DoD civilians. Their further distribution is restricted.

ARMY RANGE MAPPER

[HTTPS://SRP.USAREUR.ARMY.MIL](https://srp.usareur.army.mil)



The power of information is directly proportional to its (controlled) accessibility. The USAREUR SRP website provides information on the ITAM program as well as the latest training news from the USAREUR community. The website is also a convenient portal to all SRP GIS products and services. The USAREUR SRP website (<https://srp.usareur.army.mil>) provides a single NIPRNET solution for training area imagery and vector data and a suite of powerful geospatial tools. SRP's most popular online tool, the **Army Range Mapper (ARM)**, distributes worldwide GIS data to Soldiers, trainers, planners, and range control personnel. The ARM is one of the most utilized training support web resources in the USAREUR community.

2012 USAGE

HITS
> **1,884,698**

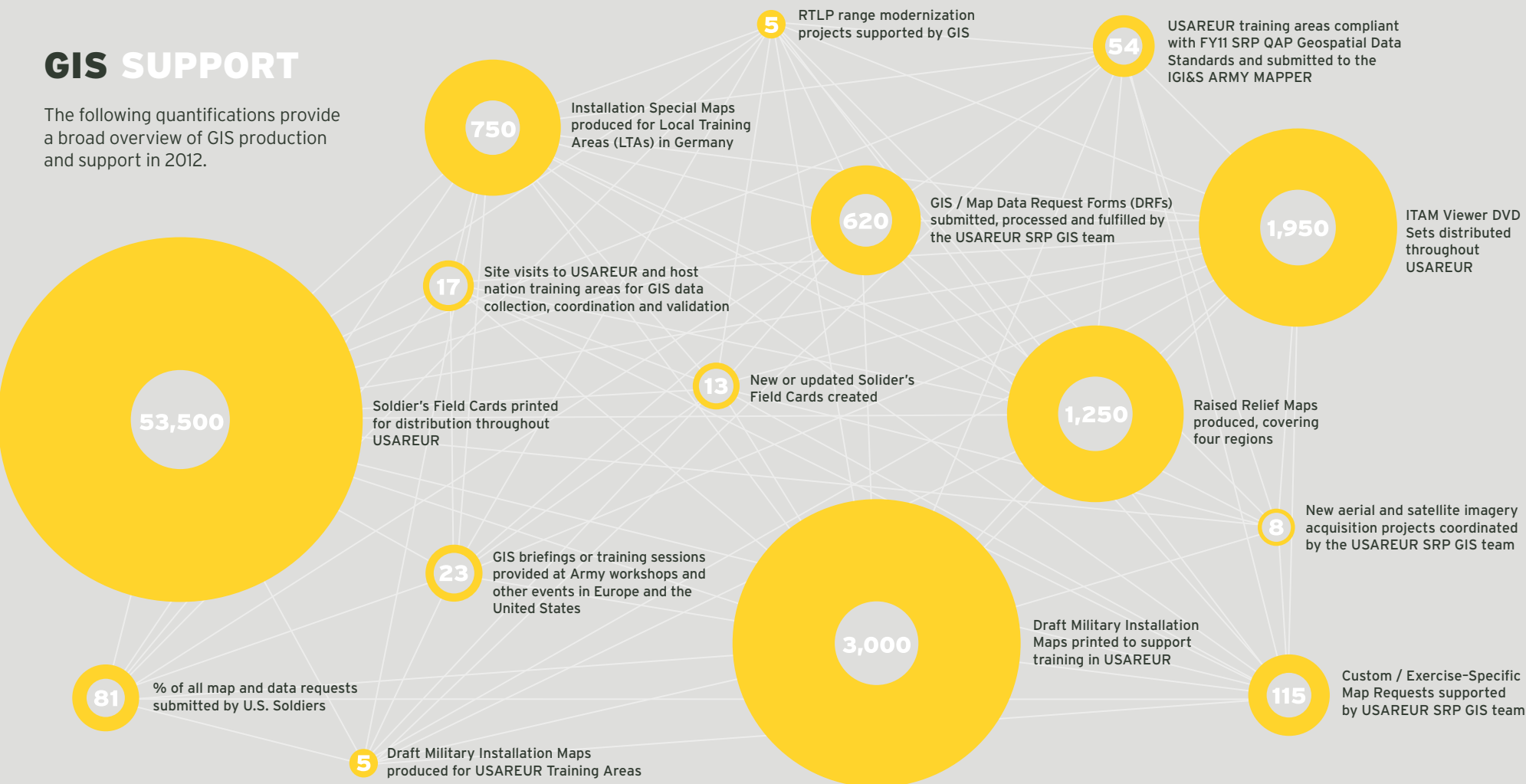
PAGE VIEWS
> **1,372,822**

VISITS
> **7,132**

UNIQUE USERS
> **2,555**

GIS SUPPORT

The following quantifications provide a broad overview of GIS production and support in 2012.



PRODUCTS AND SERVICES

DIGITAL MEDIA



ITAM VIEWER

The ITAM Viewer is a DVD-based collection of vector and raster GIS data for USAREUR training areas and ranges, accompanied by easy-to-use software. Geospatial data is available for training areas in Germany, Italy, Romania, Bulgaria, Bundeswehr-controlled training areas, and other training sites located throughout Europe and Africa. The ITAM Viewer comes as a five-DVD set.

- **DVD 1**
Grafenwoehr, JMRC Hohenfels
- **DVD 2**
Local Training Areas and Bundeswehr
- **DVD 3**
Italy Training Areas
- **DVD 4**
Joint Forward Operating Sites
- **DVD 5**
PDF Map Library

2012 DISTRIBUTION
> **1,950**

PRODUCTS AND SERVICES

MOBILE APPS

ARMY RANGE MAPPER MOBILE

Includes all USAREUR training areas, training area gate locations, Esso gas stations, and standard topographic or image-based maps. It supports navigating to those hard to find training area gates - includes gate to gate routing!



2012 DOWNLOADS
> **584**

SOLDIER'S FIELD CARD

Application includes training area maps, safety information and standard guidelines for ensuring continued environmental stewardship.



2012 DOWNLOADS
> **382**

USAREUR ENVIRONMENTAL OFFICER GUIDE

Includes valuable reference material targeting unit environmental officers and includes the You Spill, You Dig brochure, Garrison Spill Response Plans, guidance documents, risk matrix, and Material Safety Data Sheets (MSDS). Note - to be released in Spring 2013.



PRODUCTS AND SERVICES

MAPS & ATLASES

Large-format maps, atlases, and other geospatial products are available from the Training Support Centers (TSC) and the SRP RSC. To expedite your order, data request forms can be submitted via email.



INSTALLATION MAPS

Installation Special maps display topographic data and military training features for selected USAREUR training areas. Maps include aerial imagery, locator route maps, and Soldier's Field Card information.

2012 DISTRIBUTION
> **3,750**



USAREUR COMMAND OVERVIEW - TRAINING SUPPORT MAP

The USAREUR Command Overview - Training Support Map summarizes valuable information on in-theater training capabilities and projects stationing and training support requirements over the next five years.

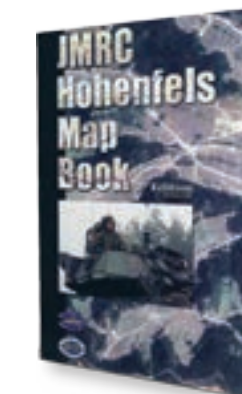
2012 DISTRIBUTION
> **40**



RAISED RELIEF MAPS

Raised Relief Maps are 3D plastic-molded maps that depict contoured landscapes using high resolution Digital Terrain Models. Available for: Grafenwoehr Training Area, JMRC Hohenfels, Afghanistan Provinces (Kabul, Kunar, Paktika), Europe, Africa, Middle East, and the Caucasus region.

2012 DISTRIBUTION
> **1,250**



MAP ATLASES

Map atlases such as the JMRC Hohenfels Map Book and the USAREUR PDF Map Book are also available.

2012 DISTRIBUTION
> **40**

USAREUR PDF MAP BOOK

The USAREUR PDF Map Book consists of a set of static overview maps for more than 60 training areas in USAREUR. Each map sheet uses the latest imagery and map data and is available from a TSC kiosk or the SRP website.

2012 DISTRIBUTION
> **12,727**



OTHER PRODUCTS

A number of other GIS and Sustainable Range Awareness products, including the popular Soldier's Field Cards, are available for all USAREUR training areas. Many of the SRP educational products (e.g. calendars, playing cards, and coloring books) are distributed at community and host nation events.



SOLDIER'S FIELD CARDS

The award-winning Soldier's Field Cards provide essential guidelines on training area usage; vehicle movement; petroleum, oil and lubricants handling; and fire prevention. Field Cards also include MEDEVAC procedures, radio frequencies, emergency phone numbers, and a training area reference map. All cards are printed on moisture-, rip-, and puncture-resistant material.

AVAILABLE SOLDIER'S FIELD CARDS

- Babadag Training Area
- Cao Malnisio Range
- Cellina Meduna / Juliet DZ / Frida DZ / Dandolo MOUT
- Grafenwoehr Training Area
- JMRC Hohenfels
- Monte Carpegna Training Area
- Monte Romano Training Area
- Novo Selo Training Area
- San Giorgio Urban Assault Course
- Slunj Training Area
- TSC Ansbach
- TSC Bamberg
- TSC Baumholder LTA/MTA
- TSC Stuttgart
- TSC Schweinfurt
- TSC Wiesbaden
- T-Series Training Area
- Valle Ugione and Lustrissimi Training Areas



Soldier's Field Card Mobile Application

2012 DISTRIBUTION

> **53,500**



TRAINING SUPPORT KIOSKS

All ITAM range and training area maps are also available from the TSAE Kiosks located at Grafenwoehr Range Operations and select Training Support Centers (TSC). In addition to PDF maps and the ability to create new maps using the ITAM Viewer, kiosk users can also obtain information on TSC assets, Deployable Instrumentation System - Europe (DISE), and the Training Aids Production Center (TAPC). Customers can print letter and large-format maps directly to the kiosk printer.

KIOSK INTERACTIONS

> **24,571**

KIOSK DOWNLOAD MAP

> **12,727**

TSAE KIOSKS LOCATED THROUGHOUT USAREUR

> **7**

OTHER PRODUCTS

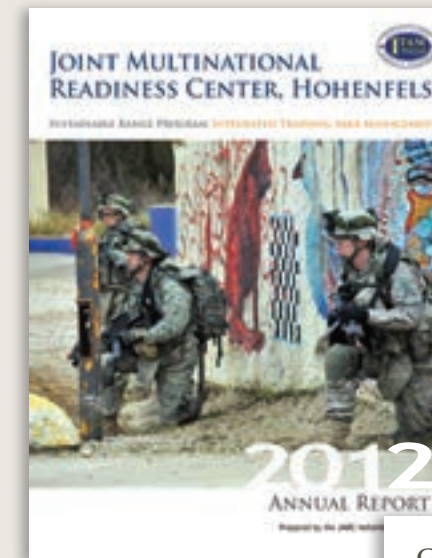
Also available are SRP calendars, camouflage posters (winter and summer versions), playing cards, and **You Spill, You Dig** booklet, a practical, field-expedient spill response guide. The Grafenwoehr SRP Regional Support Center offers non-standard products based on specific customer requirements. Some examples are maps of defined areas or unique scale, user-defined data layers, line of sight maps, and range maps. Services also include GPS digital data collection and acquisition for specific training events.



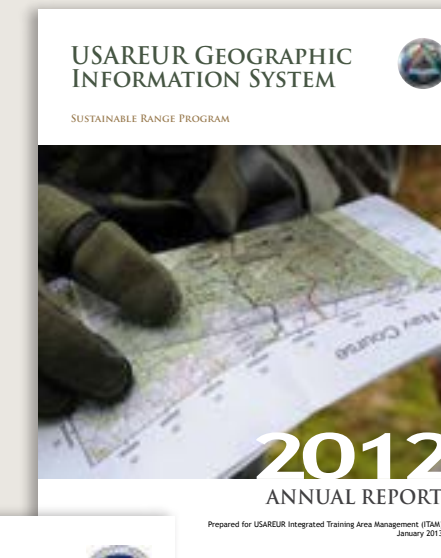
REQUESTS

For more information on these or any of the products the ITAM program offers to support the training mission of the U.S. Army, please contact the ITAM office at DSN 475-ITAM or visit the SRP website: <https://srp.usareur.army.mil>

NOTABLE DOCUMENTS



JMRC HOHENFELS ANNUAL REPORT 2012



USAREUR GEOGRAPHIC INFORMATION SYSTEM ANNUAL REPORT 2012

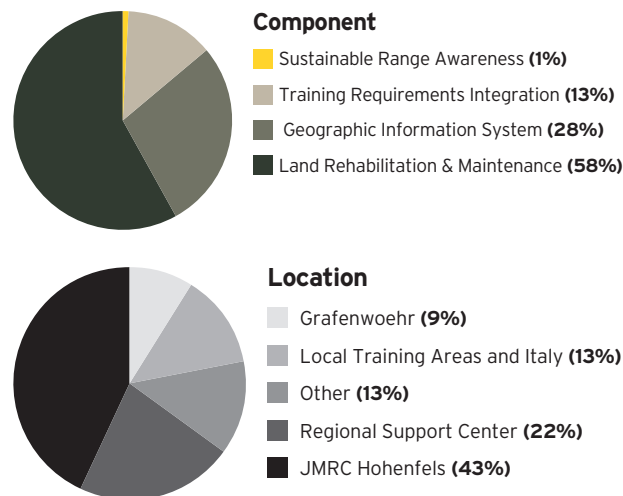


GRAFENWOEHR ANNUAL REPORT 2012

FUNDING AND WAY AHEAD

BY LOCATION

USAREUR ITAM continued to focus fiscal resources on the Major Training Areas: Grafenwoehr and JMRC Hohenfels. One-half of FY12 program funding was executed at JMRC Hohenfels (43%) and Grafenwoehr (9%) training areas. The Grafenwoehr funding was primarily used for materials only, while labor and equipment provided by Forestry and DPW provided significant cost efficiencies. ITAM also funded land repair and GIS projects at enduring Local Training Areas and Italy (13%). Execution of GIS support at the installation level and via the Regional Support Center's "hub and spoke" approach amounted to 22% of FY 2012 funding. The remaining 13% support project management, operational, and USAREUR projects (e.g. aerial imagery acquisition).



Department of the Army and USAREUR continued to provide strong funding support to the ITAM program in fiscal year (FY) 2012. The Army supports ITAM's critical role in sustaining and enhancing the training land platform.

BY COMPONENT

Functionally, training area land repair and enhancement projects continued to be the dominant USAREUR ITAM component (58%). Major Training Area and Regional Support Center GIS support staff comprised the bulk of the SRP GIS component (28%) execution followed by the Training Requirements Integration (13%) component. As in past years, the Sustainable Range Awareness component (1%) provided publicity for the Command with relatively minimal investment. Access to ITAM's web-based Workplan Analysis Module and Range Complex Master Plan Tool, detailing itemized funding breakdowns and digital copies of funding / project documentation, is available upon request.

Sustainable Range Awareness

Displays/Booth	1%
Conduct Training	30%
Print Media	69%

Training Requirements Integration

ITAM Office Equipment HW	4%
TDY and Training	6%
IT Support	20%
Management Operation: Facilities	70%

Geographic Information System

TDY and Training	4%
External GIS Support	11%
Remote Sense Data Acquisition	12%
GIS Analyst	26%
GIS Technician	47%

WAY AHEAD

The theme for the planned 2013 USAREUR Sustainable Range Program Workshop best describes the coming years: **"Training in a Time of Uncertainty, Complexity, and Austerity"**. These challenges encompass not only a constrained fiscal environment but also the reintroduction of potentially intensive training land impact activities not experienced for the past decade.

Funding priority will remain with critical land repair and maintenance projects at enduring training areas followed by Command-directed land reconfiguration projects and priority Geographic Information System projects (e.g. aerial imagery) at the Major and Local Training Areas. By adhering to ITAM's #1 principle of integrated management, cost efficiencies will be actively pursued for all projects.

Building partner capacity will also continue to be a focal point for the USAREUR ITAM program. As directed, ITAM looks forward to providing further multinational support to EUCOM, AFRICOM, and NATO.

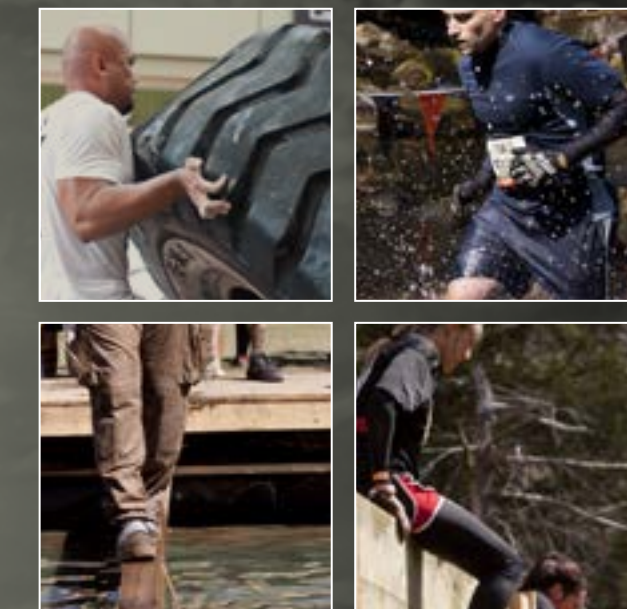
Land Rehabilitation & Maintenance

Seeding	1%
Topsoiling	1%
Disking / Plowing	2%
Large Erosion Control Structures	2%
Purchase / Lease	3%
Create Water Crossing	4%
LRAM Coordinator	4%
Brush Cutting / Mowing	5%
Small Erosion Control Structures	8%
Rock / Gravel / Riprap / Gabion	18%
Grading / Shaping / Terracing	20%
Erosion Control Materials	32%

Are you ready for the Challenge?

GRAFENWOEHR RUGGED TERRAIN OBSTACLE RUN

13 APRIL 2013



13 KILOMETERS 13 OBSTACLES



For further information or copies of this Stewardship Report, please contact the ITAM office: +49 (0)9641-83-ITAM or USAREUR.SRP.CONTACT@US.ARMY.MIL

Photos primarily provided by JMTC Flickr and Training Support Activity Europe Visual Information.

Printed on Forest Stewardship Council (FSC) certified paper. Products with an FSC label come from forests certified as being in compliance with the environmental and social standards of the Forest Stewardship Council.



[HTTPS://SRP.USAREUR.ARMY.MIL](https://SRP.USAREUR.ARMY.MIL)