

Date	Appr.	Symbol	Description

DATE	13.25 FEB 2015
DESIGNED BY	
CHECKED BY	
DRAWN BY	
INCH	
PROJECT NO.	
CONTRACT NO.	
WDSR#	
FILE NO.	

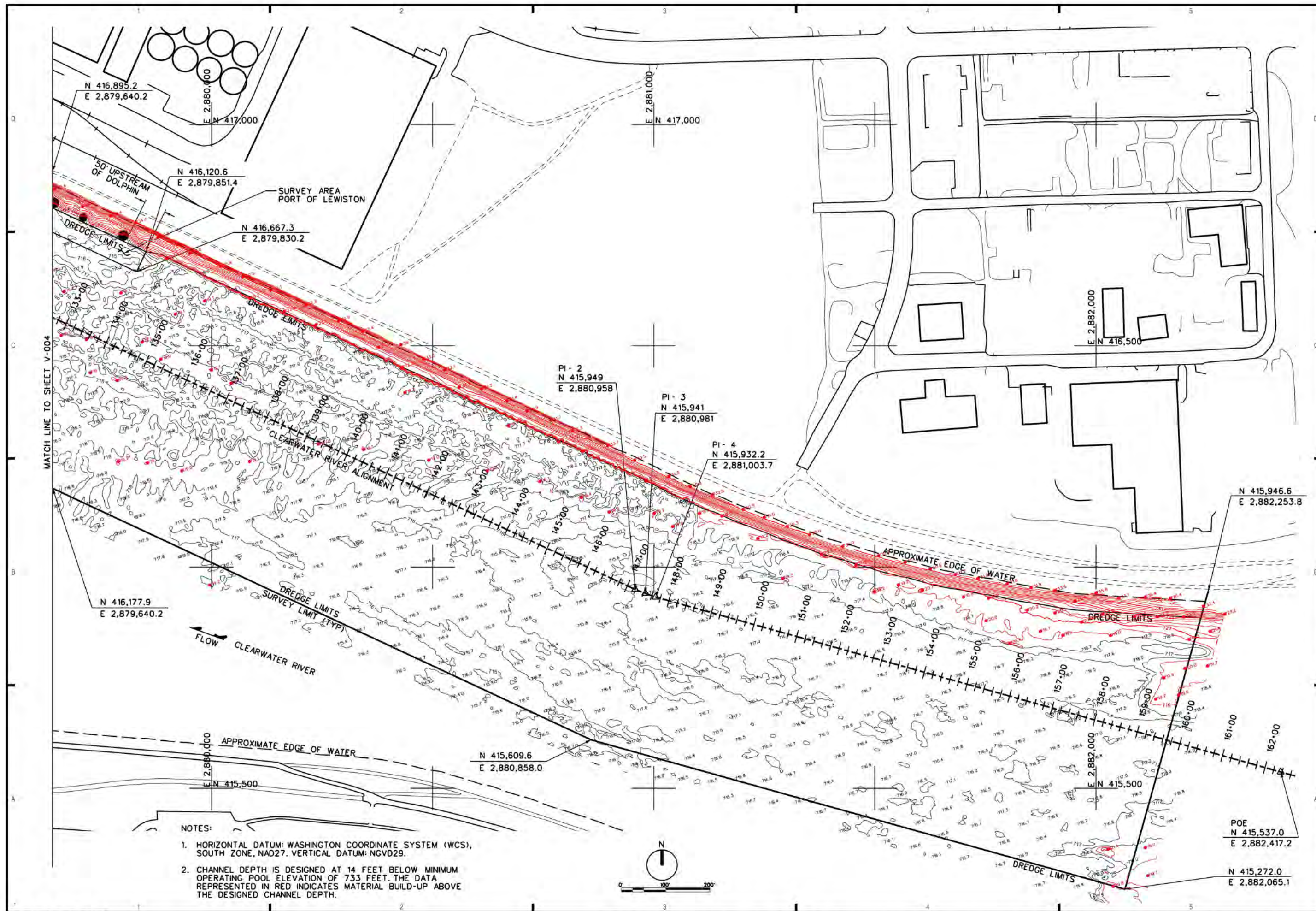
U.S. ARMY ENGINEER DISTRICT
CORPS OF ENGINEERS
WALLA WALLA, WASHINGTON

TERRASO
ENGINEERING

LOWER GRANITE LOCK AND DAM
SNAKE AND CLEARWATER RIVERS WASHINGTON AND IDAHO
W9912EF-10-D-0002, T.O. NO. 9
SNAKE RIVER AND CLEARWATER
RIVER CONFLUENCE
POST DREDGING SURVEYS

Plate number:
V-007

Sheet 7 of 7



- NOTES:
- HORIZONTAL DATUM: WASHINGTON COORDINATE SYSTEM (WCS), SOUTH ZONE, NAD27. VERTICAL DATUM: NGVD29.
 - CHANNEL DEPTH IS DESIGNED AT 14 FEET BELOW MINIMUM OPERATING POOL ELEVATION OF 733 FEET. THE DATA REPRESENTED IN RED INDICATES MATERIAL BUILD-UP ABOVE THE DESIGNED CHANNEL DEPTH.