

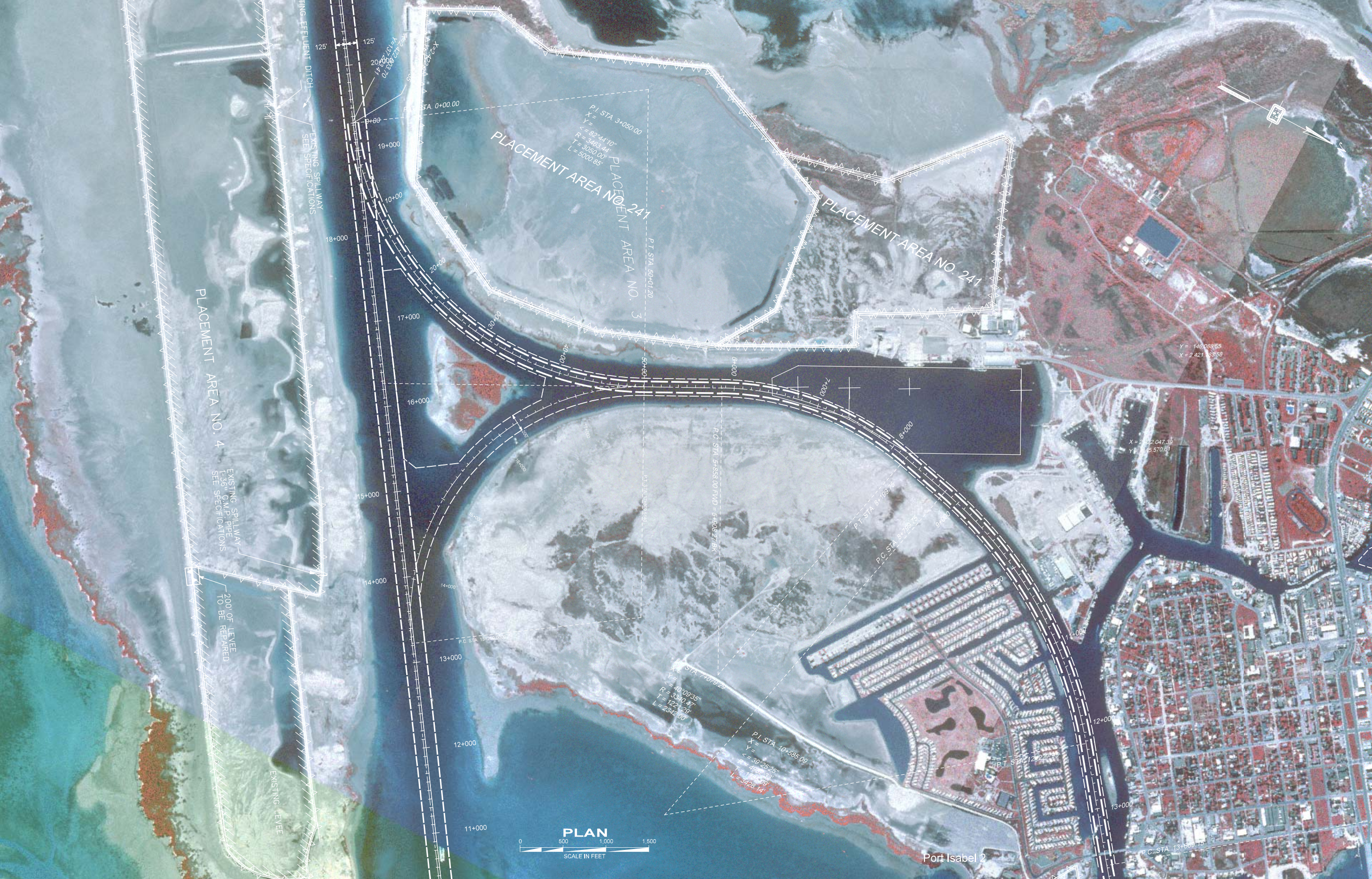
PLAN
0 500 1,000 1,500
SCALE IN FEET

X = 145,033.55
Y = 2,421,533.63

X = 2,421,047.39
Y = 1,856,670.61

P.C. STA. 18+315.76
P.T. STA. 18+315.76

P.C. STA. 13+315.76
P.T. STA. 13+315.76



PLACEMENT AREA NO. 4

EXISTING SPILLWAY
1-36" C.M.P. PIPE
SEE SPECIFICATIONS

200' OF LEVEE
TO BE REPAIRED

EXISTING LEVEE

EXISTING EFFLUENT DITCH
SEE SPECIFICATIONS

EXISTING SPILLWAY
SEE SPECIFICATIONS

PLACEMENT AREA NO. 3
P.I. STA. 3+050.00
 $\Delta = 82^{\circ}44'10''$
 $X = 3463.44'$
 $R = 5050.00'$
 $T = 5000.85'$

PLACEMENT AREA NO. 241

P.T. STA. 50+01.20

P.C. STA. 5+858.00 FWD = 5+908.27 BK

P.T. STA. 8+199.75

P.C. STA. 8+199.75

P.I. STA. 7+079.29
 $\Delta = 40^{\circ}09'55''$
 $X = 3330.47'$
 $R = 1221.29'$
 $T = 2342.00'$

P.I. STA. 10+585.09
 $\Delta = 30^{\circ}25'25''$
 $X = 4992.33'$
 $R = 1711.59'$
 $T = 3428.14'$

P.T. STA. 12+227.39

$X = 2122.047.39$
 $Y = 1165.570.61$

$Y = 146.088.55$
 $X = 2.421.833.58$



Port Isabel 2

P.C. STA. 13+669.75