



BAXTER ISLAND
PLACEMENT AREA

BAXTER ISLAND

EQUATION:
125 STA 458+473.16(RWD) F
STA 458+308.97 BK

Placement Area
No. 108

Placement Area No. 3

COLORADO RIVER DIVERSION CHANNEL
THIS AREA
AVAILABLE FOR
PIPELINE ROUTE



PLAN
SCALE IN FEET
0 500 1,000 1,500



No. 110

CURVE NO. 70

Placement Area No. 109

Placement Area No. 109

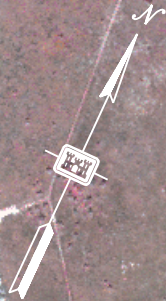
Placement Area No. 108-A

GULF INTRACOASTAL WATERWAY

EQUATION:
STA 473+367.18 (PVD)
STA 472+637.50 (RV)

CURVE NO. 69

PLAN
0 500 1,000 1,500
SCALE IN FEET



Placement Area No. 111

Placement Area No. 110

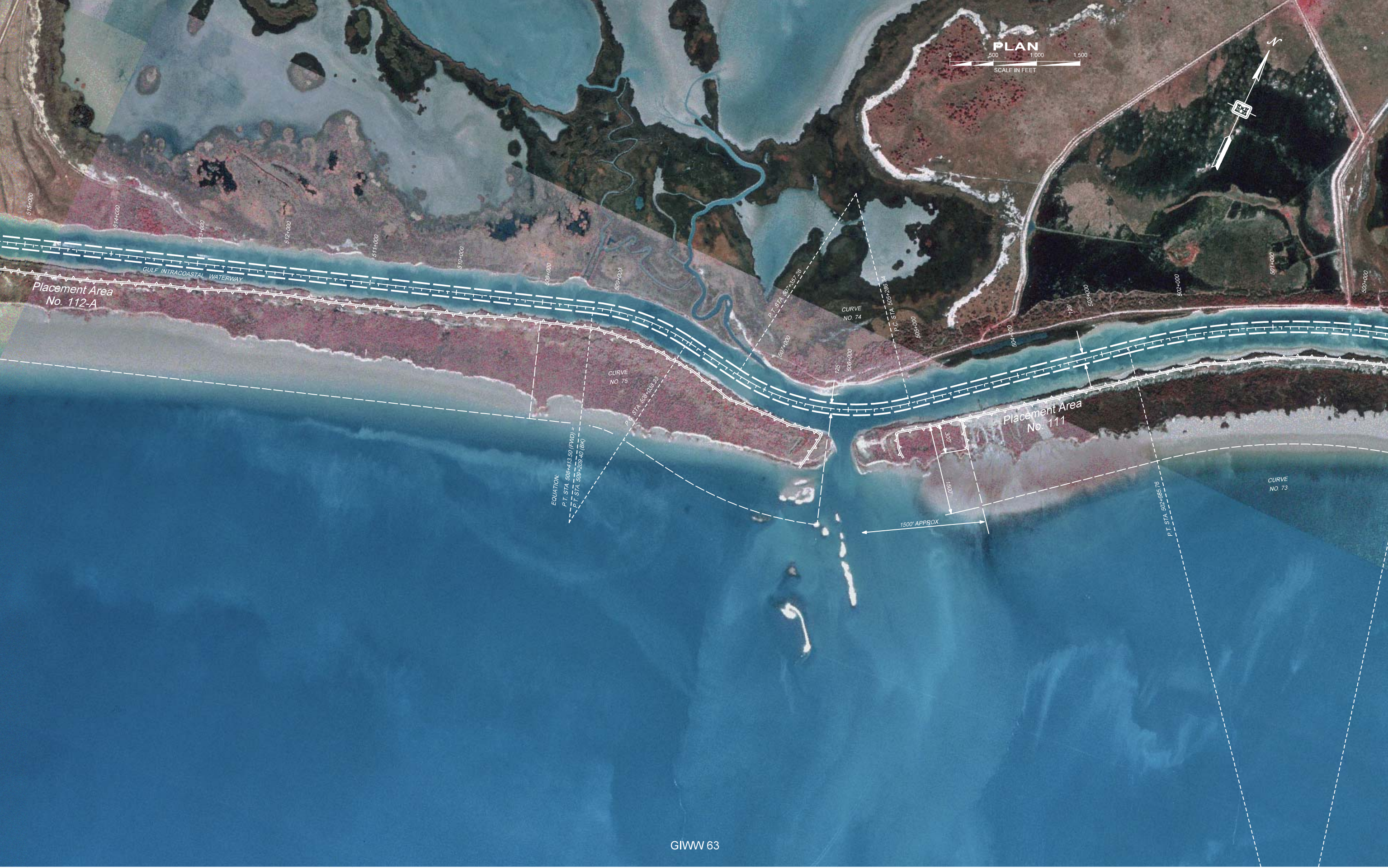
Placement Area No. 110

GULF INTRACOASTAL WATERWAY

CURVE NO. 72

CURVE NO. 71

PLAN
SCALE IN FEET
0 500 1,000 1,500



Placement Area
No. 112-A

Placement Area
No. 111

EQUATION
P.T. STA. 508+413.50 (FWD) =
P.T. STA. 508+209.40 (BK)

CURVE
NO. 75

CURVE
NO. 74

CURVE
NO. 73

PLAN
SCALE IN FEET
0 500 1,000 1,500



Placement Area
No. 112-B

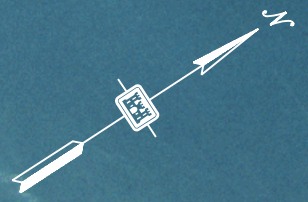
Placement Area
No. 112-A

Placement Area
No. 112-A

CURVE
NO. 76

C. STA 528+251.72

P.T. STA 528+728.71



Placement Area No. 113

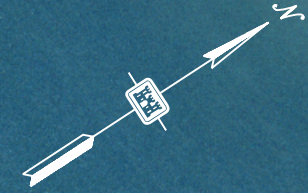
Placement Area No. 112-C

Placement Area No. 112-B

GULF INTRACOASTAL WATERWAY

CURVE NO. 76

P.T. STA. 530+79.71



STA 554+500 (GIWW) =
 0+000 (REALIGNMENT)
 X = 7,270,922.9340
 Y = 7,710,318.5
 LON: 92.214