

$$P.I. STA. 128+728.999$$
$$X = 3,336,872.623$$
$$Y = 581,805.041$$

$$X = 3,336,119.650$$
$$Y = 582,151.6490$$



P.I. STA. 58+29.38 T.C. Channel =
STA. 24+832.79 T.C. Channel =

STA. 3327+65.89 G.I.W.W. =
P.C. STA. 0+00 T.C. Channel Junction =

Texas City Channel Junction
125'

Disposal
Area No. 45
(Pelican Spit)

Discharge
Corridor No. 1
Barge Mooring Basin

CELL C

CELL B

PELICAN

GIWW 24

135+000

134+000

133+000

132+000

131+000

130+000

129+000

128+000

127+000

126+000

TRANSITION

3210+00

3208+00

3220+00

3222+34.287

3230+00

3240+00

3250+00

30+000

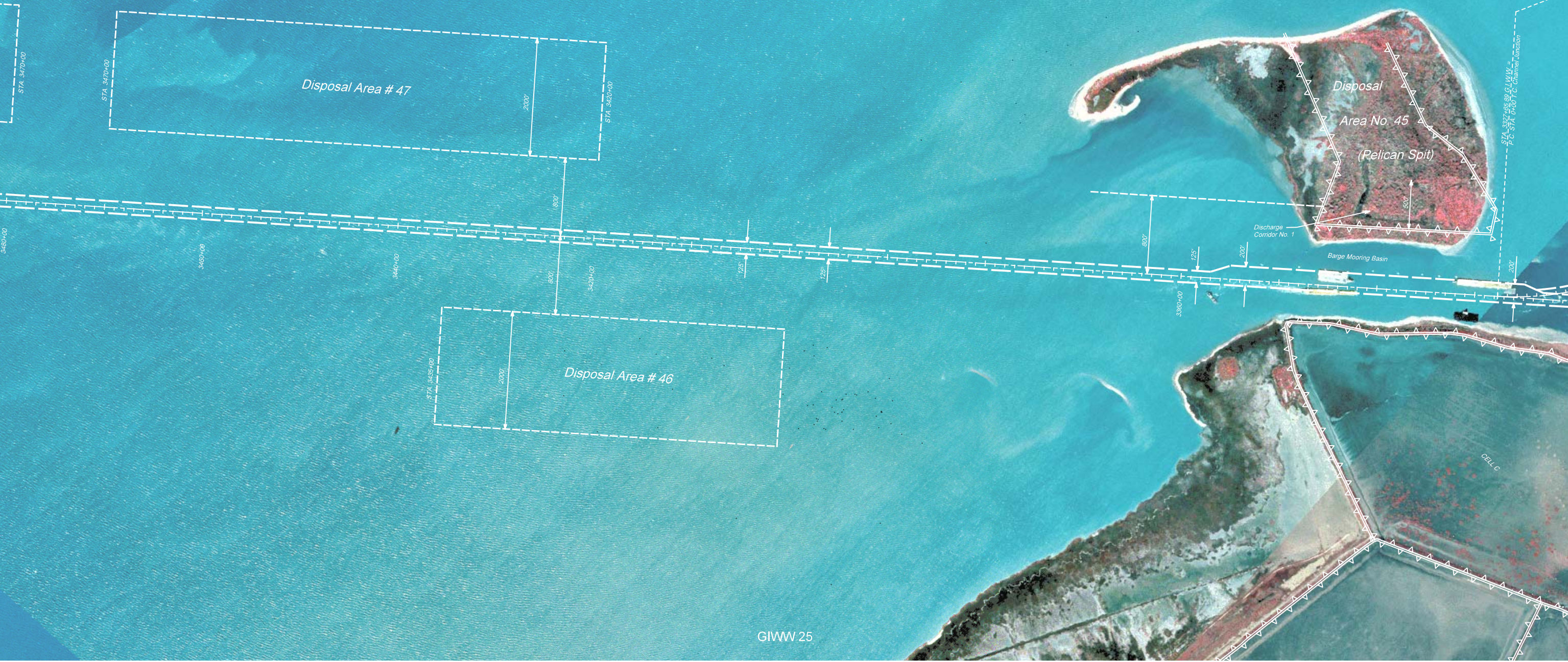
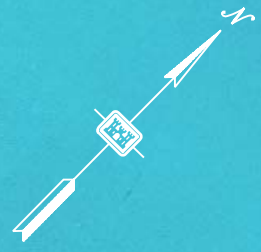
3290+00

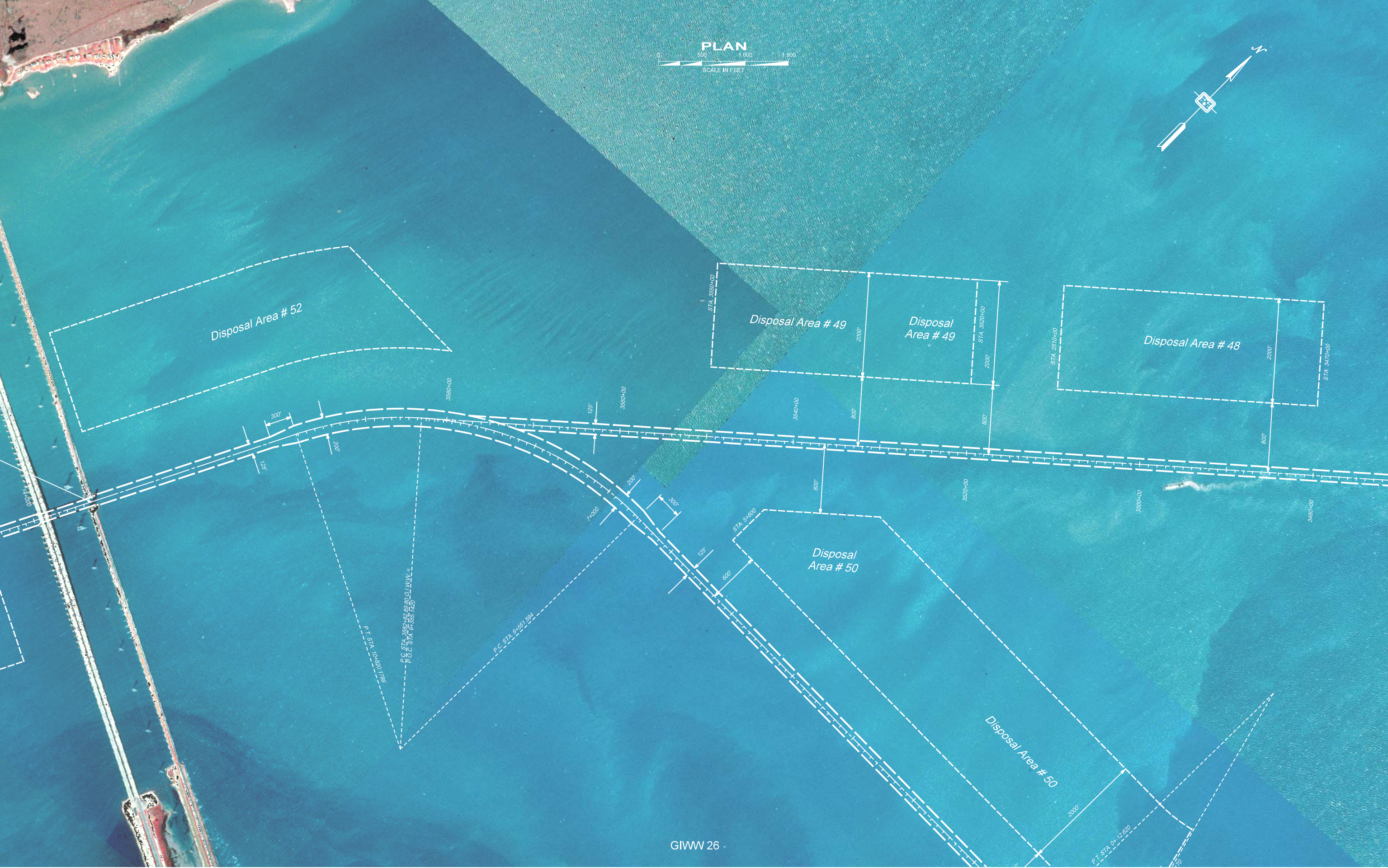
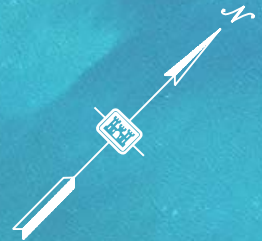
3300+00

34+000

3200+00

3198+00





Disposal Area # 52

Disposal Area # 49

Disposal Area # 49

Disposal Area # 48

Disposal Area # 50

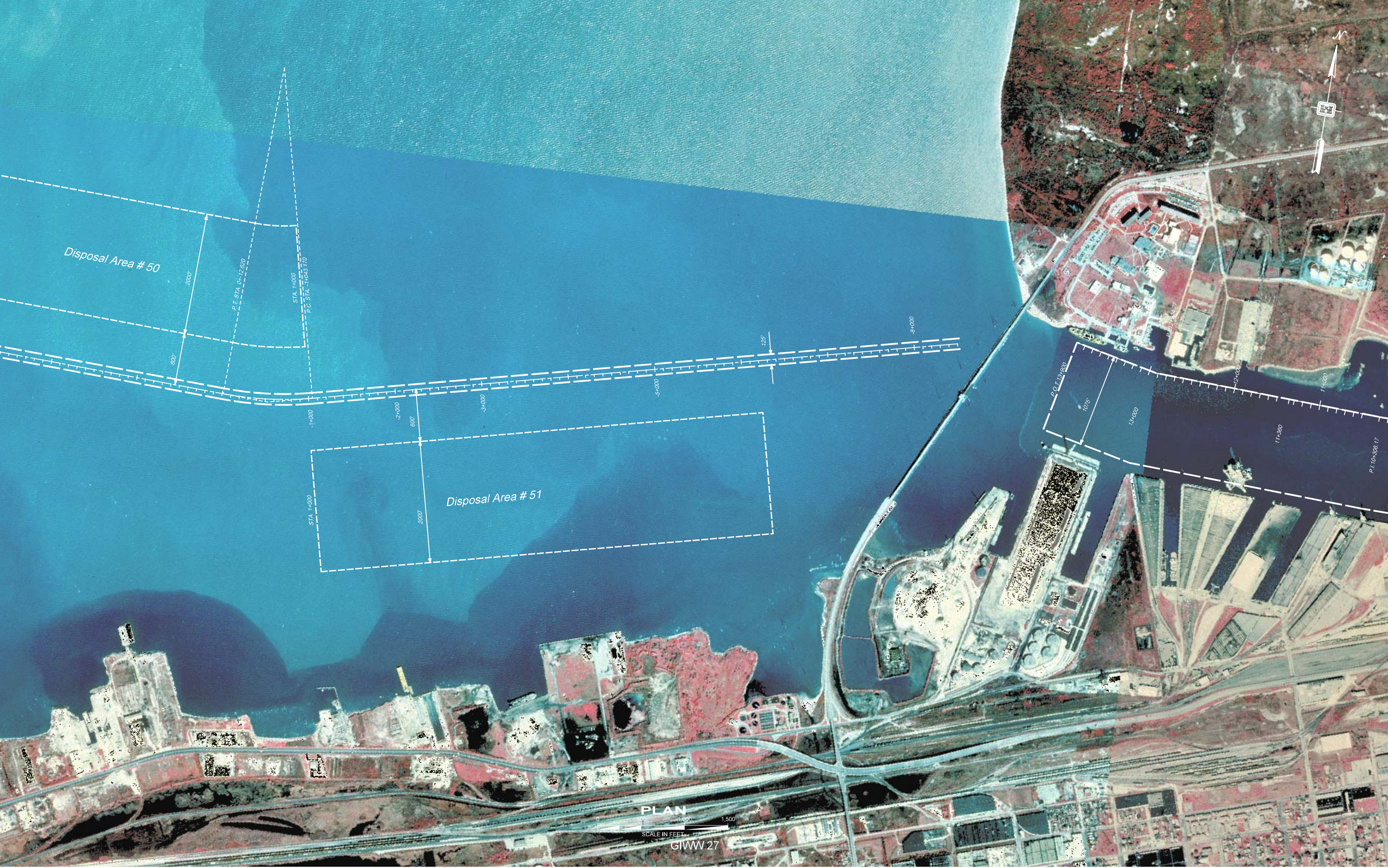
Disposal Area # 50

P.T. STA. 0+28+00
P.C. STA. 3582+00
P.O.C. STA. 0+365+00

P.C. STA. 6+55+1.594

STA. P+800

P.T. STA. 0+12+820



Disposal Area # 50

2000'
600'

P.T. STA. 0+12.820

STA. 1+000
P.C. STA. 1+043.170

1+000

2+000

3+000

5+000

8+000

Disposal Area # 51

STA. 1+000

2000'

P.O.T. 12+930

1075'

13+000

12+000

11+380

11+000

P.L. 10+306.17

PLAN



SCALE IN FEET

GIWW 27

