

PLACEMENT AREA NO. 9

PLACEMENT AREA No. 7

PLACEMENT AREA No. 8

P.T. 827+53.17A
CURVE NO. 40

P.T. 825+25.87B
CURVE NO. 40

P.T. 823+00.00
CURVE NO. 40

P.T. 810+24.10
CURVE NO. 38C

P.T. 802+66.54A
CURVE NO. 38C

P.T. 794+00.00
CURVE NO. 38C

P.T. 786+58.23
CURVE NO. 38C

P.T. 778+00.00
CURVE NO. 38C

P.T. 770+00.00
CURVE NO. 38C

P.T. 762+00.00
CURVE NO. 38C

P.T. 754+00.00
CURVE NO. 38C

P.T. 746+00.00
CURVE NO. 38C

P.T. 738+00.00
CURVE NO. 38C

P.T. 730+00.00
CURVE NO. 38C

P.T. 722+00.00
CURVE NO. 38C

P.T. 714+00.00
CURVE NO. 38C

P.T. 706+00.00
CURVE NO. 38C

P.T. 698+00.00
CURVE NO. 38C

P.T. 690+00.00
CURVE NO. 38C

P.T. 682+00.00
CURVE NO. 38C

P.T. 674+00.00
CURVE NO. 38C

P.T. 666+00.00
CURVE NO. 38C

P.T. 658+00.00
CURVE NO. 38C

P.T. 650+00.00
CURVE NO. 38C

P.T. 642+00.00
CURVE NO. 38C

SILTING BASIN

RAVINE

RAVINE

RAVINE

RAVINE

RAVINE

RAVINE

RAVINE

RAVINE

RAVINE

RAVINE

RAVINE

RAVINE

RAVINE

RAVINE

RAVINE

RAVINE

RAVINE

RAVINE

RAVINE

RAVINE

RAVINE

RAVINE

RAVINE



Colorado River 1



PLACEMENT AREA No. 6



Colorado River 2

P.C. 705+28.20

700+00

690+00

684+00

680+00

676+00

672+00

668+00

664+00

660+00

656+00

652+00

648+00

644+00

640+00

636+00

632+00

628+00

624+00

620+00

616+00

612+00

608+00

604+00

600+00

596+00

592+00

P.T. 705+28.20

P.C. 672+71.83

P.T. 672+71.83

P.C. 652+73.65

P.T. 652+73.65

P.C. 634+88.63

P.T. 634+88.63

P.C. 620+67.63

P.T. 620+67.63

P.C. 604+46.02

P.T. 604+46.02

P.C. 571+24.22

P.T. 571+24.22

P.C. 583+32.17

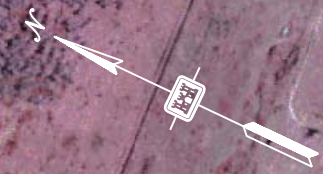
P.T. 583+32.17

P.C. 557+89.28

P.T. 557+89.28

P.C. 547+71.72

P.T. 547+71.72





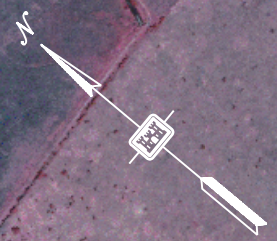
INTERSECTION
P.O. 521 AND
COLO. RIVER
STA. 503+25
A = 2,892.004, 978
I = 359.604, 233

PLAN
SCALE IN FEET
0 500 1,000 1,500

PLACEMENT
AREA No. 3B

Colorado River 3

PLAN
SCALE IN FEET
0 500 1,000 1,500





Colorado River 5



PLAN
SCALE IN FEET

BAXTER ISLAND
PLACEMENT AREA

Placement Area No. 3

Placement Area No. 108

Colorado Crossing 6

Placement

COLORADO RIVER DIVERSION CHANNEL

THIS AREA
AVAILABLE FOR
PIPELINE ROUTE

CURVE
NO. 3

CURVE
NO. 1

CURVE
NO. 2

P.C. STA
4779.21
(BY-PASS)

P.T. STA
72786.80
(BY-PASS)

P.C. STA
29445.9960

P.T. STA
47776.3340
BACK (BY-PASS) =
STA 21143.65
FWD. (NAV. CHANNEL)

P.T. STA
53367.27

P.C. STA
57832.80

P.T. STA
62404.27

P.C. STA
82992.27

449+000

449+250

449+316

450+000

450+250

450+350

450+400

450+500

450+774

450+874

451+000

451+700

451+800

452+000

453+000

454+000

454+000

454+000

454+000

454+000

454+000

454+000

454+000

454+000

454+000

454+000

454+000

454+000

455+700

456+000

457+500

457+600

458+000

453+000

453+000

453+000

453+000

453+000

453+000

450+000

450+000

450+000

450+000

450+000

450+000

450+000

450+000

450+000

450+000

452+000

452+000

452+000

452+000

452+000

452+000

450+000

450+000

450+000

450+000

450+000

450+000

450+000

450+000

450+000

450+000

451+000

451+000

451+000

451+000

451+000

450+000

450+000

450+000

450+000

450+000

450+000

450+000

450+000

450+000

450+000

451+000

451+000

451+000

451+000

451+000

450+000

450+000

450+000

450+000

450+000

450+000

450+000

450+000

450+000

450+000

452+000

452+000

452+000

452+000

452+000

450+000

450+000

450+000

450+000

450+000

450+000

450+000

450+000

450+000

450+000

452+000

452+000

452+000

452+000

452+000

450+000

450+000

450+000

450+000

450+000

450+000

450+000

450+000

450+000

450+000

452+000

452+000

452+000

452+000

450+000

450+000

450+000

450+000

450+000

450+000

450+000

450+000

450+000

450+000

452+000

452+000

452+000

452+000

450+000

450+000

450+000

450+000

450+000

450+000

450+000

450+000

450+000

450+000

452+000

452+000

452+000

452+000

450+000

450+000

450+000

450+000

450+000

450+000

450+000

450+000

450+000

450+000

452+000

452+000

452+000

452+000

450+000

450+000

450+000

450+000

450+000

450+000

450+000

450+000

450+000

450+000

452+000

452+000

452+000

450+000

450+000

450+000

450+000

450+000

450+000

450+000

450+000

450+000

450+000

452+000

452+000

452+000

450+000

450+000

450+000

450+000

450+000

450+000

450+000

450+000

450+000

450+000

452+000

452+000

452+000

450+000

450+000

450+000

450+000

450+000

450+000

450+000

450+000

450+000

450+000

452+000

452+000

450+000

450+000

450+000

450+000

450+000

450+000

450+000

450+000

450+000

450+000

452+000

452+000

450+000

450+000

450+000

450+000

450+000

450+000

450+000

450+000

450+000

450+000

452+000

452+000

450+000

450+000

450+000

450+000

450+000

450+000

450+000

450+000

450+000

450+000

452+000

450+000

450+000

450+000

450+000

450+000

450+000

450+000

450+000

450+000

450+000

452+000

450+000

450+000

450+000

450+000

450+000

450+000

450+000

450+000

450+000

450+000

452+000

450+000

450+000

Colorado Navigation 7



CURVE NO. 4
P.C. STA. 16+460.81
P.T. STA. 16+553.92

CURVE NO. 6
P.C. STA. 20+621.06
P.T. STA. 20+773.83

CURVE NO. 8
P.C. STA. 22+249.54
P.T. STA. 22+485.23

CURVE NO. 10
P.C. STA. 23+938.18 BACK
P.C. STA. 23+254.73 FWD
P.T. STA. 23+452.68

CURVE NO. 3

CURVE NO. 5

CURVE NO. 7

CURVE NO. 9

P.T. STA. 11+076.95

10+000

12+000

13+000

14+000

15+000

16+000

17+000

18+000

19+000

20+000

21+000

22+000

23+000

24+000

P.C. STA. 18+929.40
P.T. STA. 19+000.31

P.C. STA. 21+510.81
P.T. STA. 21+777.60

P.C. STA. 22+850.00
P.T. STA. 23+038.81

P.C. STA. 7+065.74
P.T. STA. 7+065.74



COLORADO RIVER NAVIGATION CHANNEL

CHANNEL TRANSITION
FROM -14' M.L.T. 100' WIDE
TO -17' M.L.T. 300' WIDE

NOTE: TOP OF DISCHARGE NOT
TO EXCEED +8.0' M.L.T.

PLACEMENT AREA

DREDGE MATERIAL SHALL
BE DISCHARGED IN
SURF ZONE

CURVE NO. 10
P.C. STA. 23+283.16 BACK
P.C. STA. 23+290.44 FWD
P.T. STA. 23+455.23

CURVE NO. 9
P.C. STA. 22+650.00
P.T. STA. 23+088.51

CURVE NO. 11
P.C. STA. 24+886.24
P.T. STA. 25+126.17

CURVE NO. 12
P.C. STA. 27+096.71
P.T. STA. 27+200.43

26+000

27+000

28+000

29+000

30+000

31+000

32+000

33+000

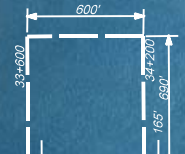
34+000

35+000

36+000

37+000

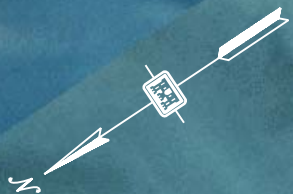
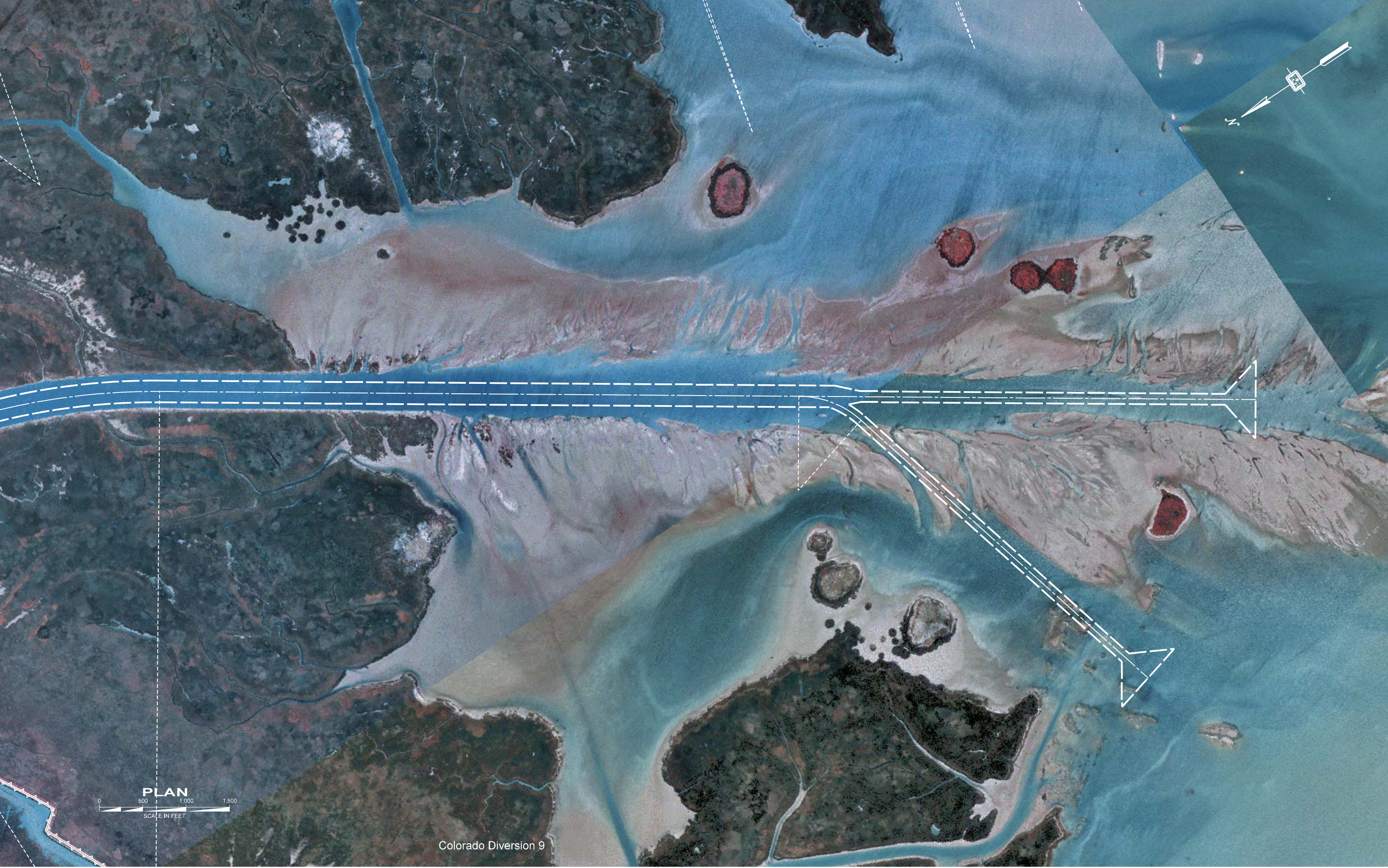
P.I. 37+600



STA. 35+600

STA. 33+204.27

1700'



PLAN

Colorado Diversion 9