

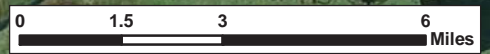


Galveston District Permit Setbacks Sabine Neches Waterway

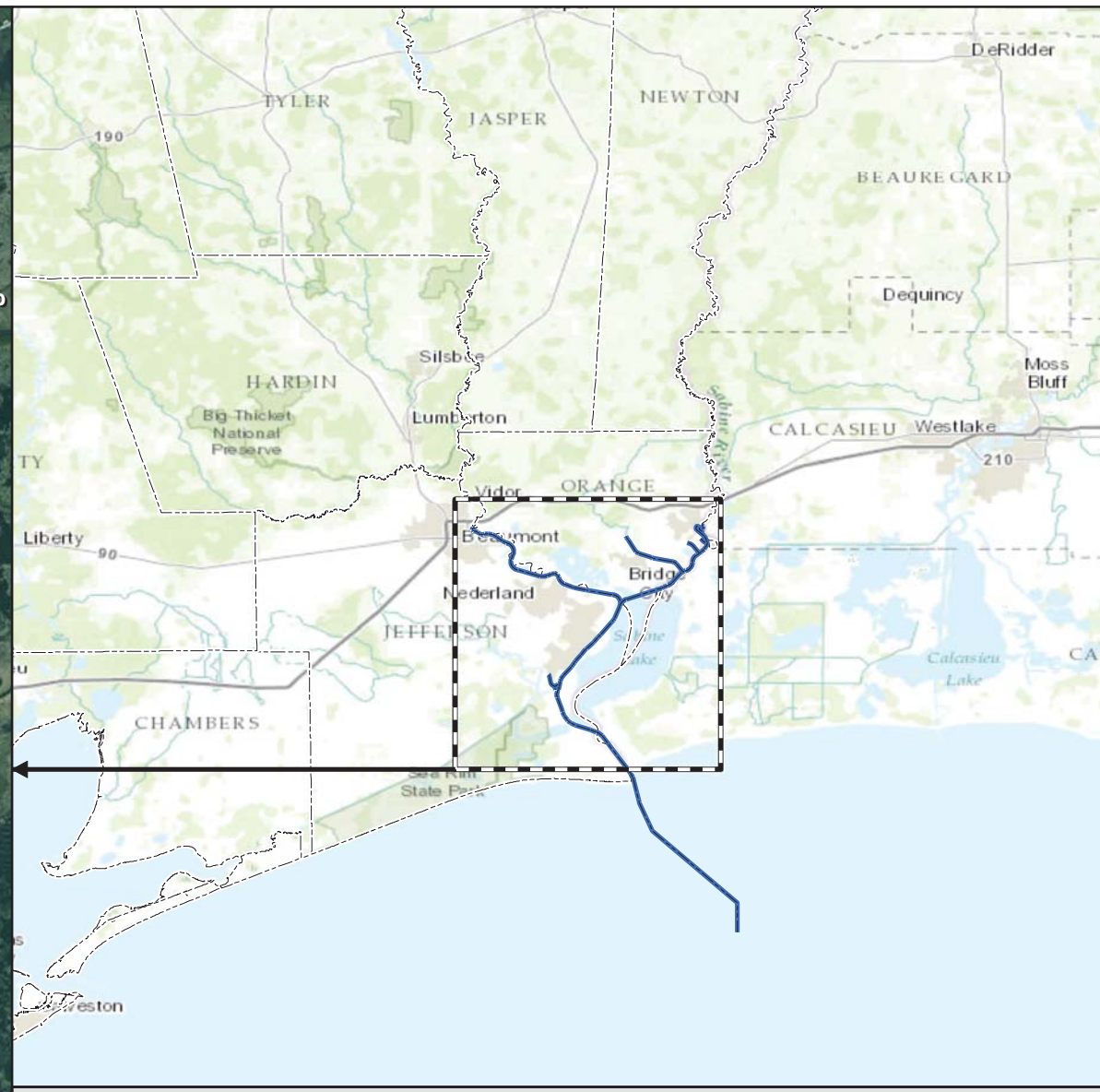


Date: 3/7/2016
Mapped by: m3odnrvk

- LOW (>500ft)
- MEDIUM (250ft-500ft)
- HIGH (<250ft)

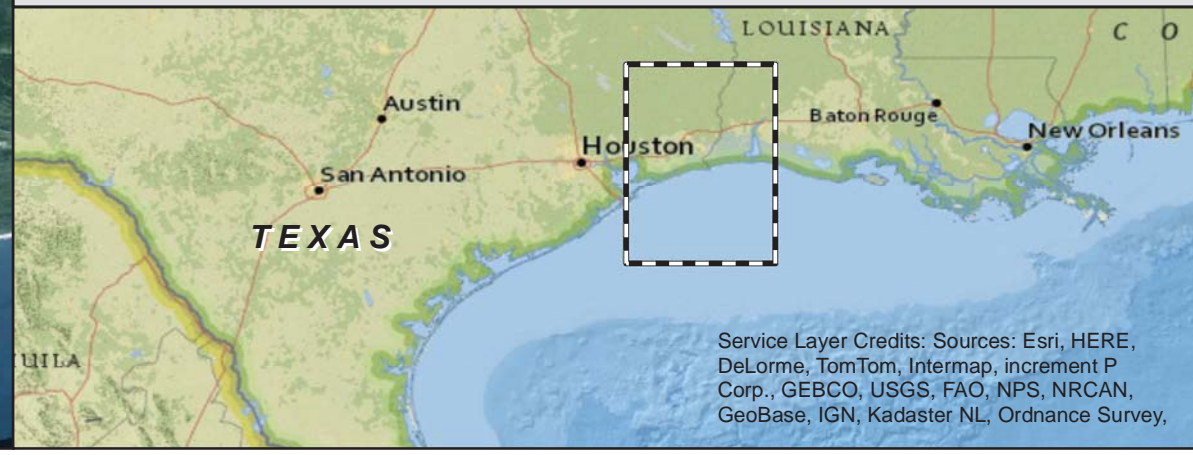


Map Index Indicated by White Numbered Boxes

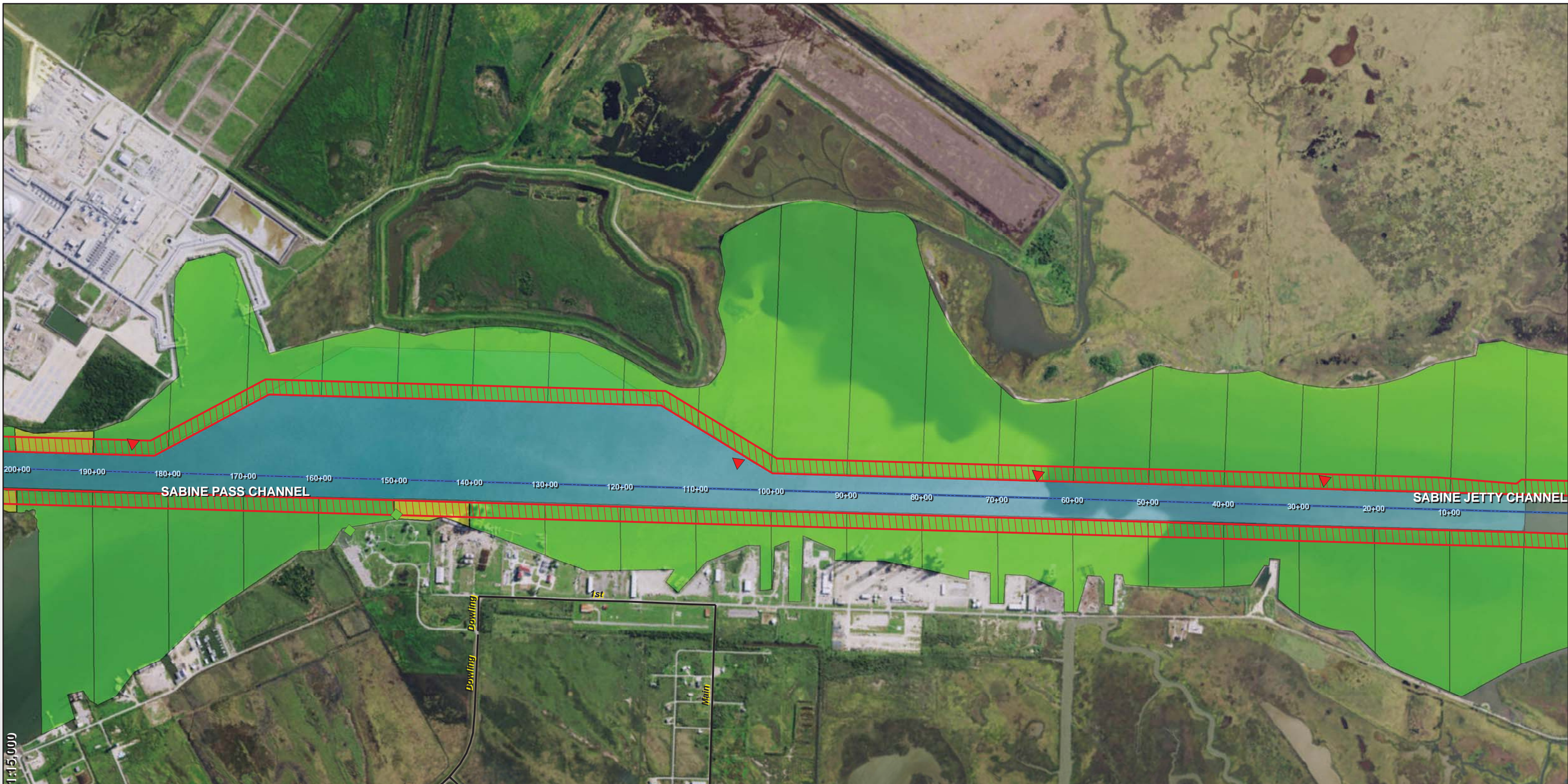


Standard Setback. The Standard Setback is designed to establish a distance from the near bottom edge of the SNWW where structures or fill should not extend past.

Setback Hazard Zone. The Setback Hazard Zones are designed and established to identify areas of the SNWW that are narrow and of which the placement of structures and/or fill would have a higher probability of interfering with navigation. The Hazard Zone areas have been designed and established based on maximum zone width of the open water areas between the existing structure/ bank (shoreline) and the near bottom edge (toe). Zones are aligned with channel station and dredge survey reaches.



Service Layer Credits: Sources: Esri, HERE, DeLorme, TomTom, Intermap, increment P Corp., GEBCO, USGS, FAO, NPS, NRCAN, GeoBase, IGN, Kadaster NL, Ordnance Survey,



Channel Centerline

Setback Zones 48ft Alignment

- Low (>500ft)
- Medium (250-500ft)
- High (<250ft)
- SAFETY SETBACK ZONE (<196ft)

0 650 1,300 2,600 Feet

Mapped by: m3odnrvk
Date: 3/7/2016

Service Layer Credits: Sources: Esri, HERE, DeLorme, TomTom, Intermap, increment P Corp., GEBCO, USGS, FAO, NPS, NRCAN, GeoBase, IGN, Kadaster NL, Ordnance Survey,

Feature Map Imagery: NAIP/Texas 2014 (1m)

This product is reproduced from geospatial information prepared by the U.S. Army Corps of Engineers. GIS data and product accuracy may vary. Data may be developed from sources of differing accuracy, accurate only at certain scales, based on modeling or interpretation, incomplete while being created or revised, etc. Using GIS products for purposes other than those for which they were created may yield inaccurate or misleading results. The Corps of Engineers reserves the right to correct, update, modify, or replace GIS products without notification.





1:15,000

— Channel Centerline

Setback Zones 48ft Alignment

- Low (>500ft)
- Medium (250-500ft)
- High (<250ft)
- SAFETY SETBACK ZONE (<196ft)

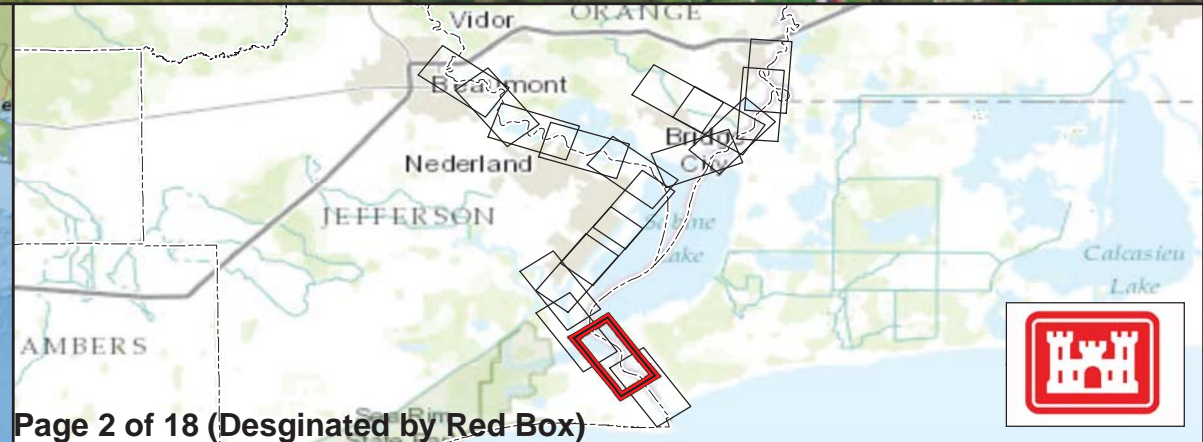
0 650 1,300 2,600 Feet

Mapped by: m3odnrvk
Date: 3/7/2016

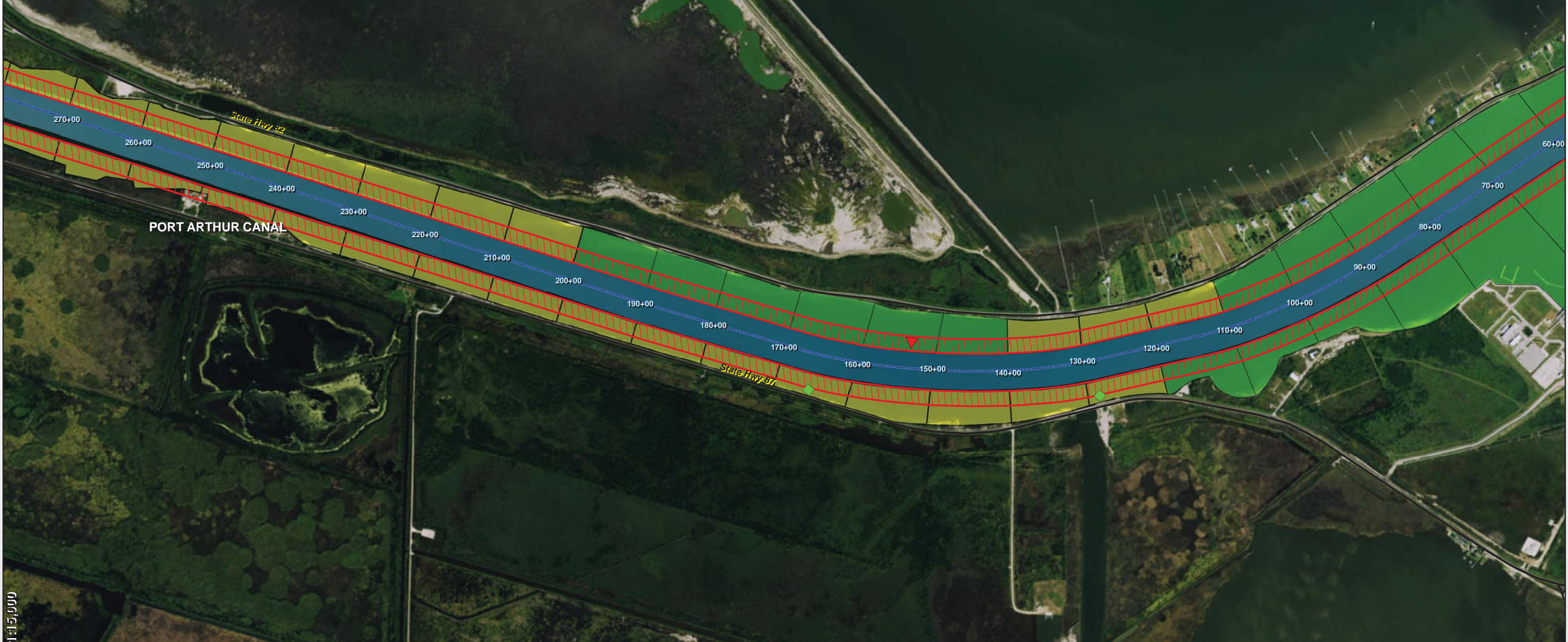
Service Layer Credits: Sources: Esri, HERE, DeLorme, TomTom, Intermap, increment P Corp., GEBCO, USGS, FAO, NPS, NRCAN, GeoBase, IGN, Kadaster NL, Ordnance Survey,

Feature Map Imagery: NAIPTexas 2014 (1m)

This product is reproduced from geospatial information prepared by the U.S. Army Corps of Engineers. GIS data and product accuracy may vary. Data may be developed from sources of differing accuracy, accurate only at certain scales, based on modeling or interpretation, incomplete while being created or revised, etc. Using GIS products for purposes other than those for which they were created may yield inaccurate or misleading results. The Corps of Engineers reserves the right to correct, update, modify, or replace GIS products without notification.



JUNCTION PORT ARTHUR CANAL AND SABINE-NECHES CANAL



1:15,000

Channel Centerline

Setback Zones 48ft Alignment

- Low (>500ft)
- Medium (250-500ft)
- High (<250ft)
- SAFETY SETBACK ZONE (<196ft)

0 650 1,300 2,600 Feet

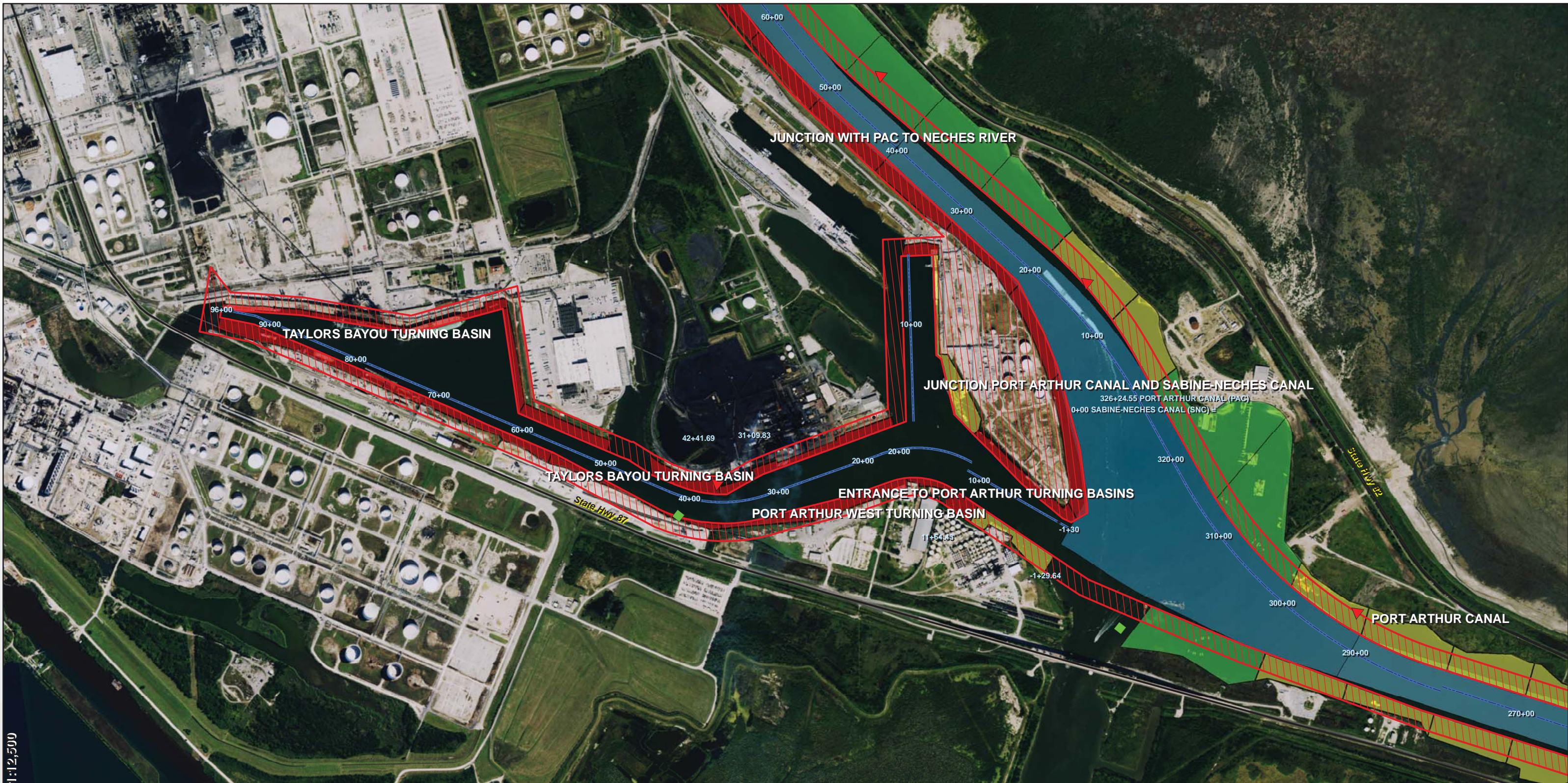
Mapped by: m3odnrvk
Date: 3/7/2016

Service Layer Credits: Sources: Esri, HERE, DeLorme, TomTom, Intermap, increment P Corp., GEBCO, USGS, FAO, NPS, NRCAN, GeoBase, IGN, Kadaster NL, Ordnance Survey,

Feature Map Imagery: NAIP/Texas 2014 (1m)

This product is reproduced from geospatial information prepared by the U.S. Army Corps of Engineers. GIS data and product accuracy may vary. Data may be developed from sources of differing accuracy, accurate only at certain scales, based on modeling or interpretation, incomplete while being created or revised, etc. Using GIS products for purposes other than those for which they were created may yield inaccurate or misleading results. The Corps of Engineers reserves the right to correct, update, modify, or replace GIS products without notification.





1:12,500

— Channel Centerline

Setback Zones 48ft Alignment

- Low (>500ft)
- Medium (250-500ft)
- High (<250ft)
- SAFETY SETBACK ZONE (<196ft)

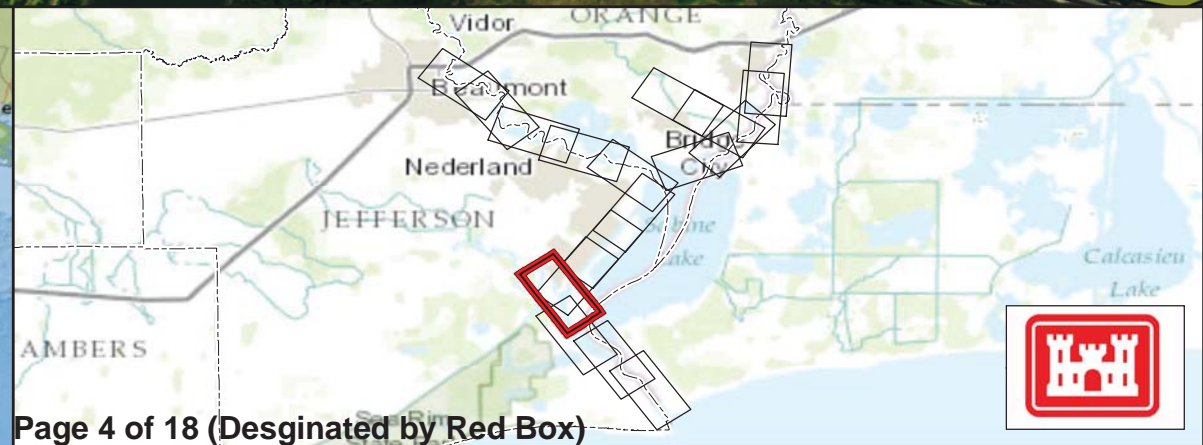
0 550 1,100 2,200 Feet

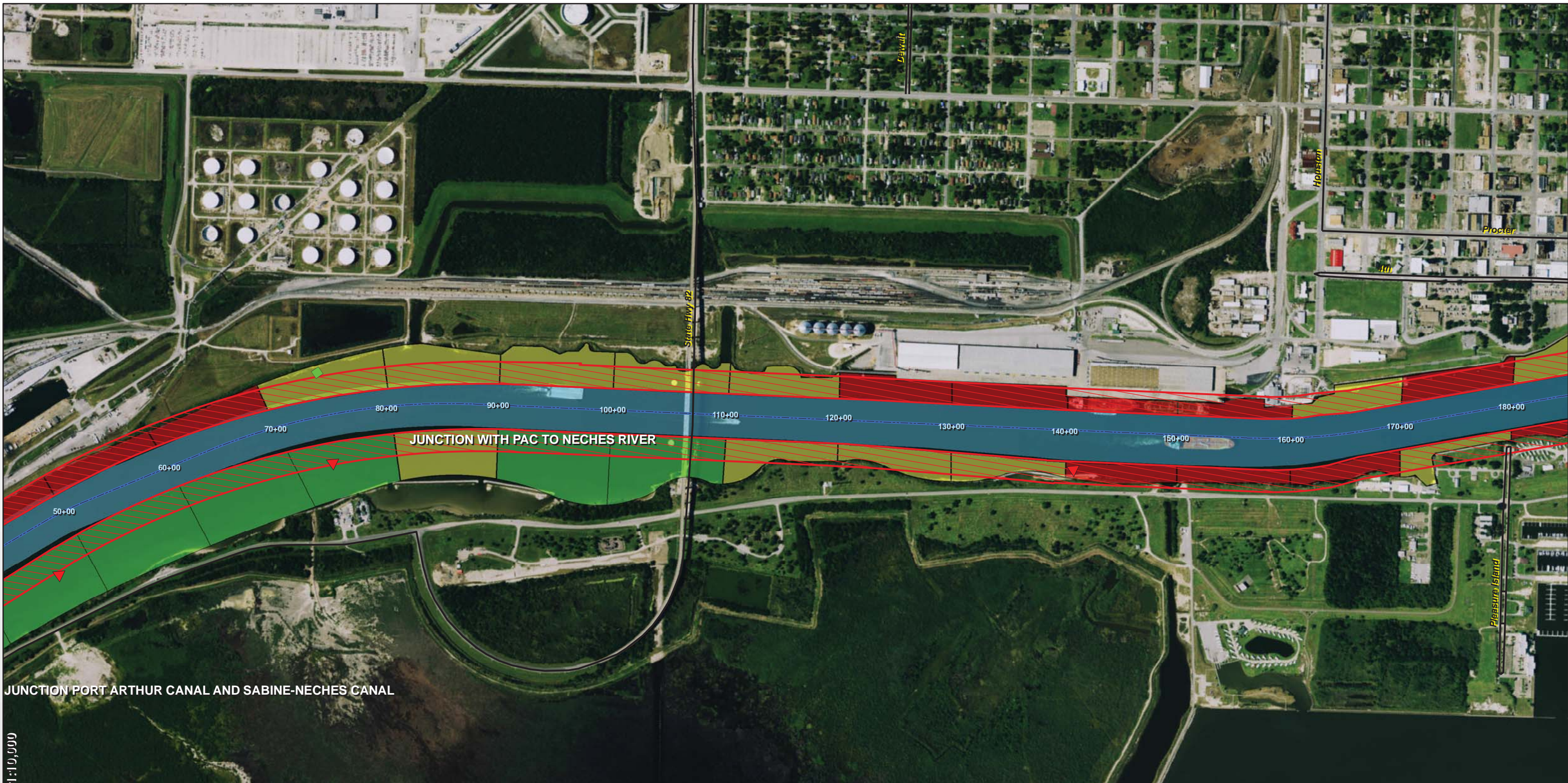
Mapped by: m3odnrvk
Date: 3/7/2016

Service Layer Credits: Sources: Esri, HERE, DeLorme, TomTom, Intermap, increment P Corp., GEBCO, USGS, FAO, NPS, NRCAN, GeoBase, IGN, Kadaster NL, Ordnance Survey,

Feature Map Imagery: NAIPTexas 2014 (1m)

This product is reproduced from geospatial information prepared by the U.S. Army Corps of Engineers. GIS data and product accuracy may vary. Data may be developed from sources of differing accuracy, accurate only at certain scales, based on modeling or interpretation, incomplete while being created or revised, etc. Using GIS products for purposes other than those for which they were created may yield inaccurate or misleading results. The Corps of Engineers reserves the right to correct, update, modify, or replace GIS products without notification.





1:10,000

Channel Centerline

Setback Zones 48ft Alignment

- Low (>500ft)
- Medium (250-500ft)
- High (<250ft)
- SAFETY SETBACK ZONE (<196ft)

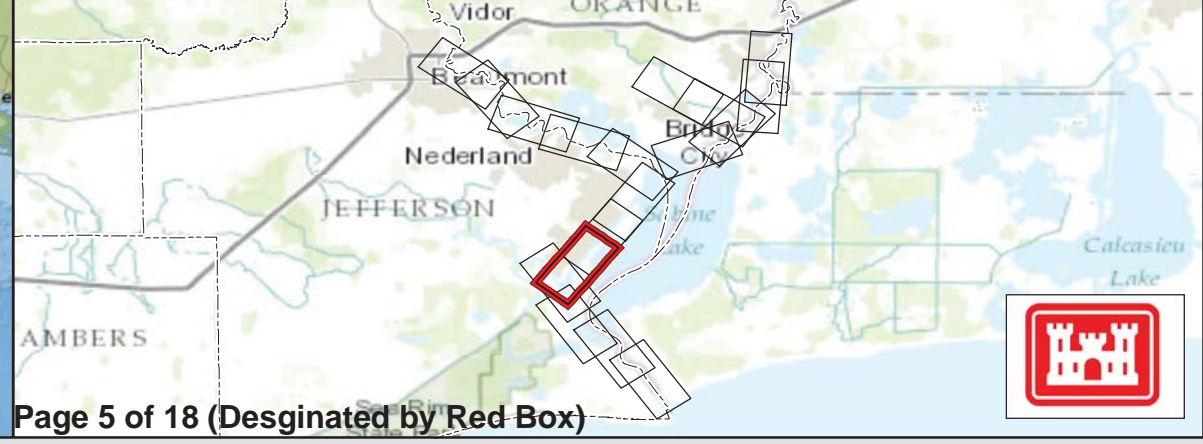
0 440 880 1,760 Feet

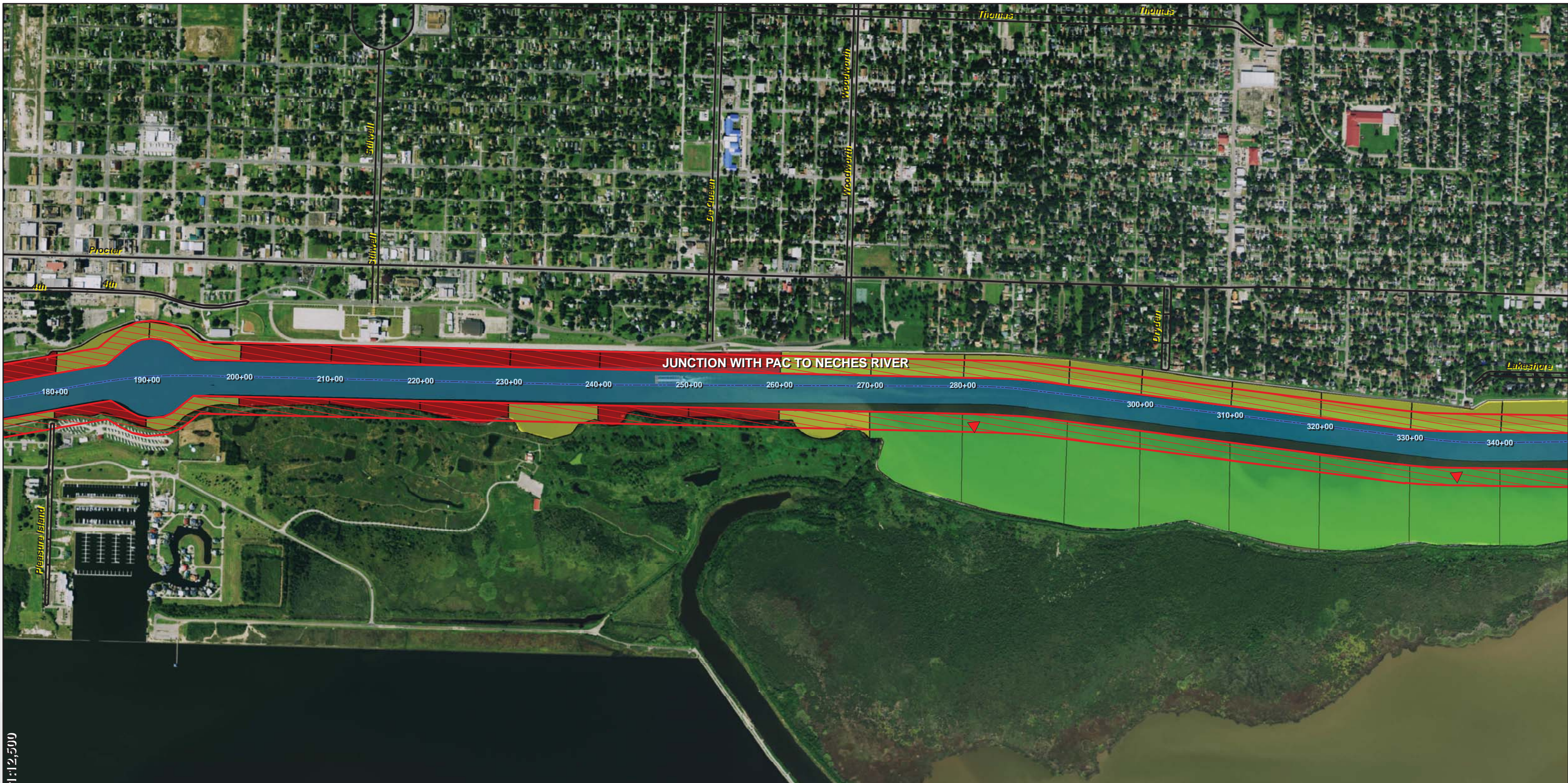
Mapped by: m3odnrvk
Date: 3/7/2016

Service Layer Credits: Sources: Esri, HERE, DeLorme, TomTom, Intermap, increment P Corp., GEBCO, USGS, FAO, NPS, NRCAN, GeoBase, IGN, Kadaster NL, Ordnance Survey,

Feature Map Imagery: NAIP/Texas 2014 (1m)

This product is reproduced from geospatial information prepared by the U.S. Army Corps of Engineers. GIS data and product accuracy may vary. Data may be developed from sources of differing accuracy, accurate only at certain scales, based on modeling or interpretation, incomplete while being created or revised, etc. Using GIS products for purposes other than those for which they were created may yield inaccurate or misleading results. The Corps of Engineers reserves the right to correct, update, modify, or replace GIS products without notification.





1:12,500

— Channel Centerline

Setback Zones 48ft Alignment

- Low (>500ft)
- Medium (250-500ft)
- High (<250ft)
- SAFETY SETBACK ZONE (<196ft)

0 550 1,100 2,200

Feet

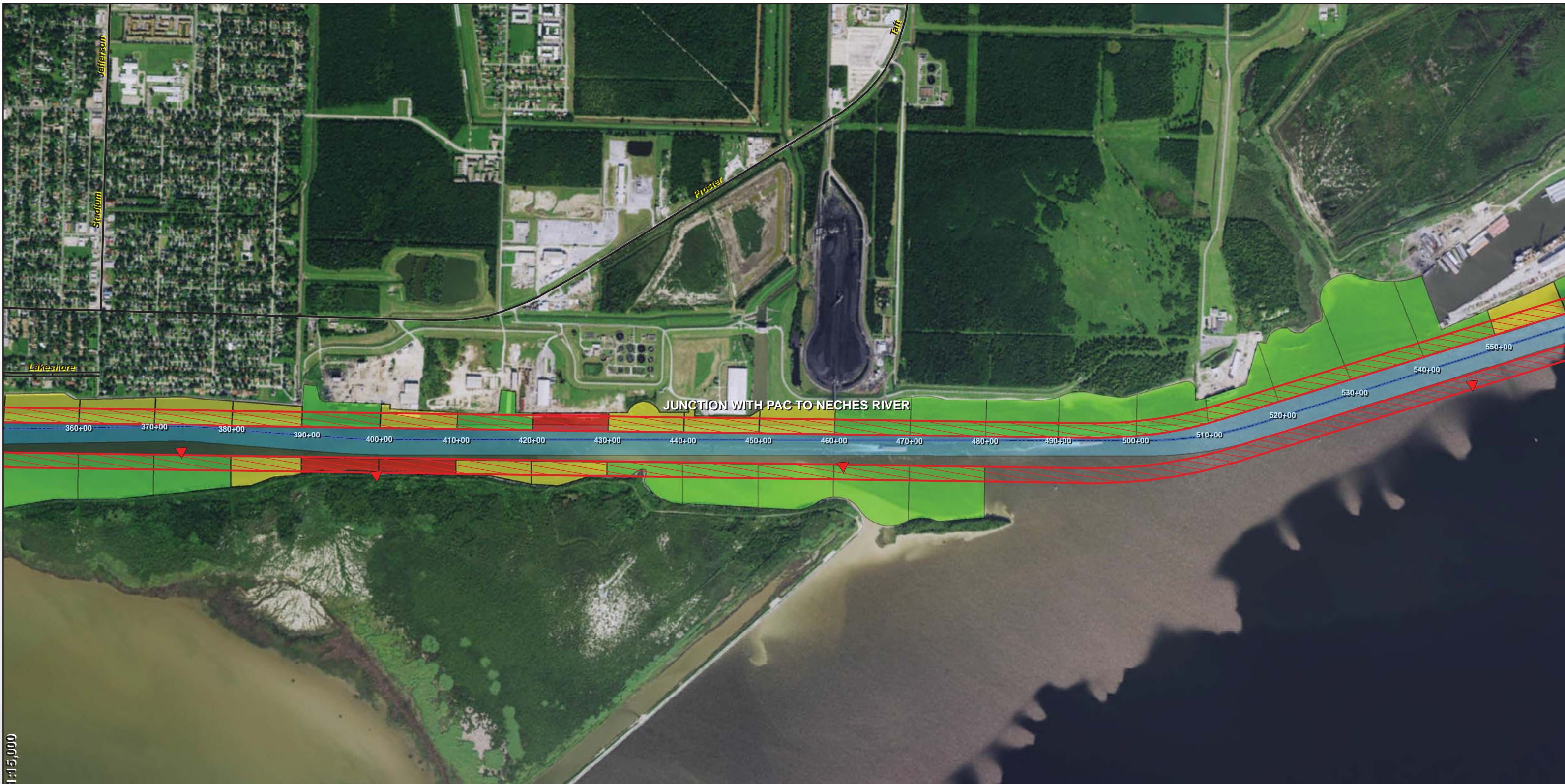
Mapped by: m3odnrvk
Date: 3/7/2016

Service Layer Credits: Sources: Esri, HERE, DeLorme, TomTom, Intermap, increment P Corp., GEBCO, USGS, FAO, NPS, NRCAN, GeoBase, IGN, Kadaster NL, Ordnance Survey,

Feature Map Imagery: NAIP/Texas 2014 (1m)

This product is reproduced from geospatial information prepared by the U.S. Army Corps of Engineers. GIS data and product accuracy may vary. Data may be developed from sources of differing accuracy, accurate only at certain scales, based on modeling or interpretation, incomplete while being created or revised, etc. Using GIS products for purposes other than those for which they were created may yield inaccurate or misleading results. The Corps of Engineers reserves the right to correct, update, modify, or replace GIS products without notification.





1:15,000

— Channel Centerline

Setback Zones 48ft Alignment

- Low (>500ft)
- Medium (250-500ft)
- High (<250ft)
- SAFETY SETBACK ZONE (<196ft)

0 650 1,300 2,600 Feet

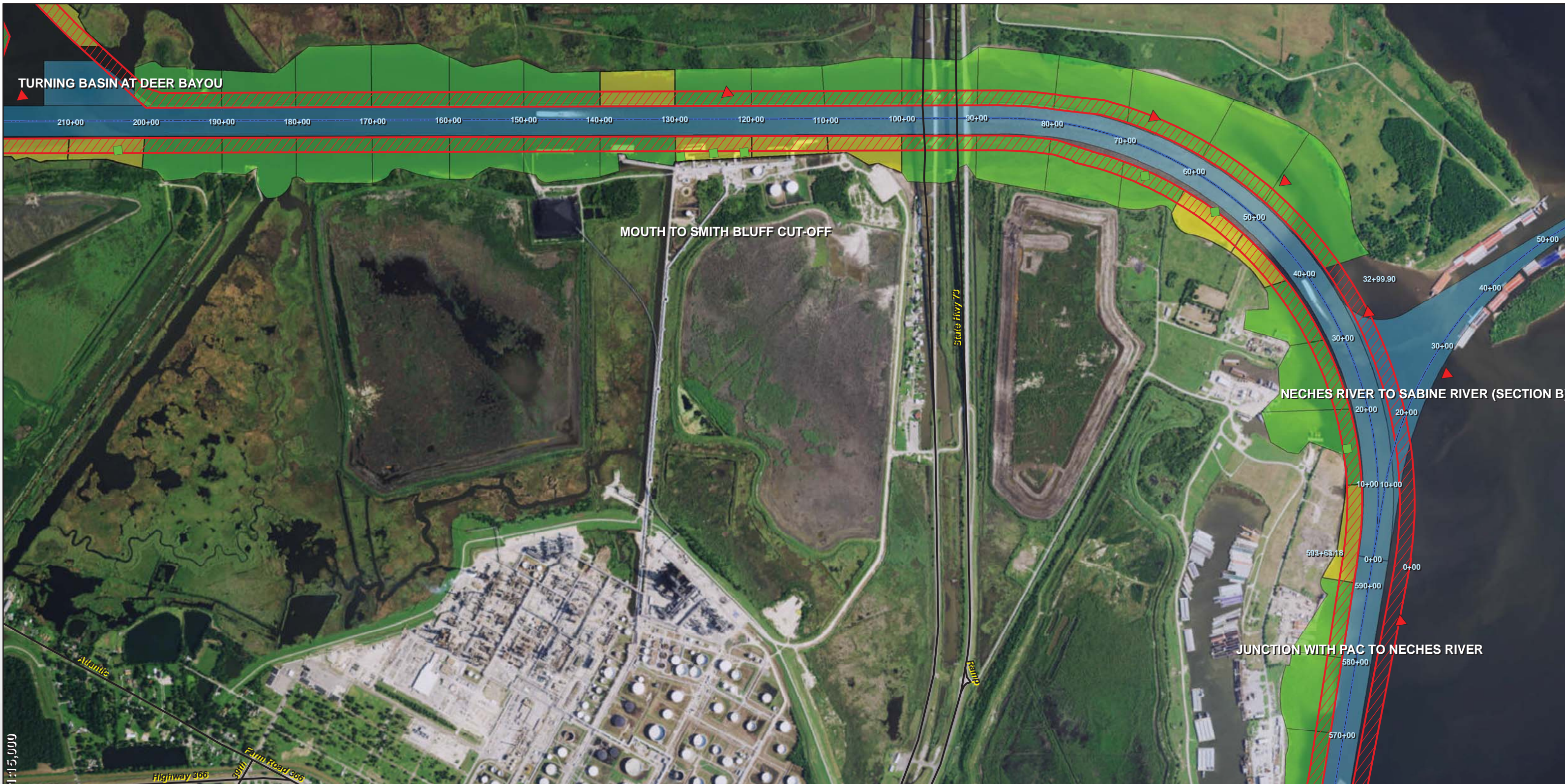
Mapped by: m3odnrvk
Date: 3/7/2016

Service Layer Credits: Sources: Esri, HERE, DeLorme, TomTom, Intermap, increment P Corp., GEBCO, USGS, FAO, NPS, NRCAN, GeoBase, IGN, Kadaster NL, Ordnance Survey,

Feature Map Imagery: NAIPTexas 2014 (1m)

This product is reproduced from geospatial information prepared by the U.S. Army Corps of Engineers. GIS data and product accuracy may vary. Data may be developed from sources of differing accuracy, accurate only at certain scales, based on modeling or interpretation, incomplete while being created or revised, etc. Using GIS products for purposes other than those for which they were created may yield inaccurate or misleading results. The Corps of Engineers reserves the right to correct, update, modify, or replace GIS products without notification.





Channel Centerline

Setback Zones 48ft Alignment

- Low (>500ft)
- Medium (250-500ft)
- High (<250ft)
- SAFETY SETBACK ZONE (<196ft)

0 650 1,300 2,600 Feet

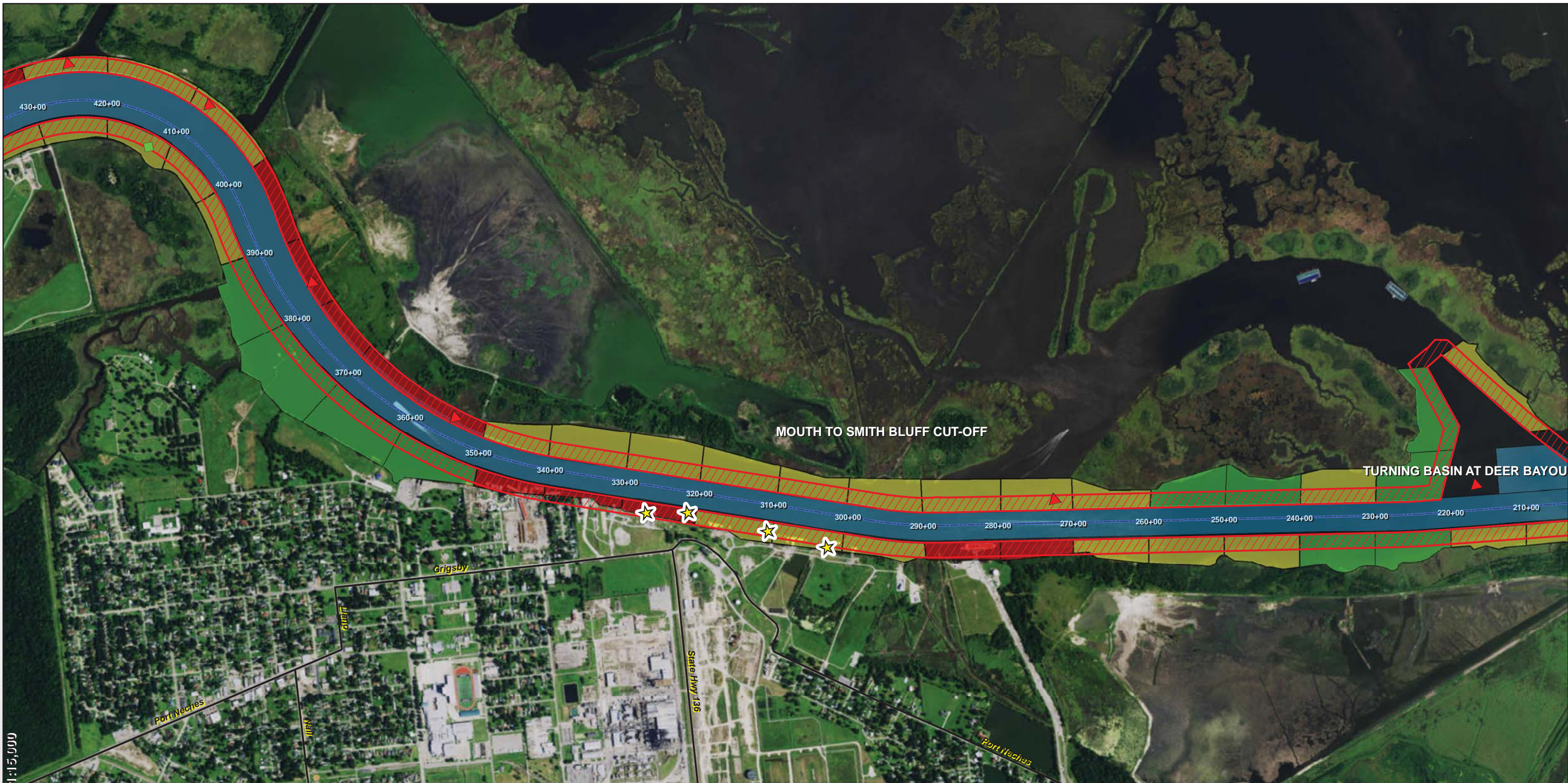
Mapped by: m3odnrvk
Date: 3/7/2016

Service Layer Credits: Sources: Esri, HERE, DeLorme, TomTom, Intermap, increment P Corp., GEBCO, USGS, FAO, NPS, NRCAN, GeoBase, IGN, Kadaster NL, Ordnance Survey,

Feature Map Imagery: NAIP/Texas 2014 (1m)

This product is reproduced from geospatial information prepared by the U.S. Army Corps of Engineers. GIS data and product accuracy may vary. Data may be developed from sources of differing accuracy, accurate only at certain scales, based on modeling or interpretation, incomplete while being created or revised, etc. Using GIS products for purposes other than those for which they were created may yield inaccurate or misleading results. The Corps of Engineers reserves the right to correct, update, modify, or replace GIS products without notification.





— Channel Centerline

Setback Zones 48ft Alignment

- Low (>500ft)
- Medium (250-500ft)
- High (<250ft)
- SAFETY SETBACK ZONE (<196ft)

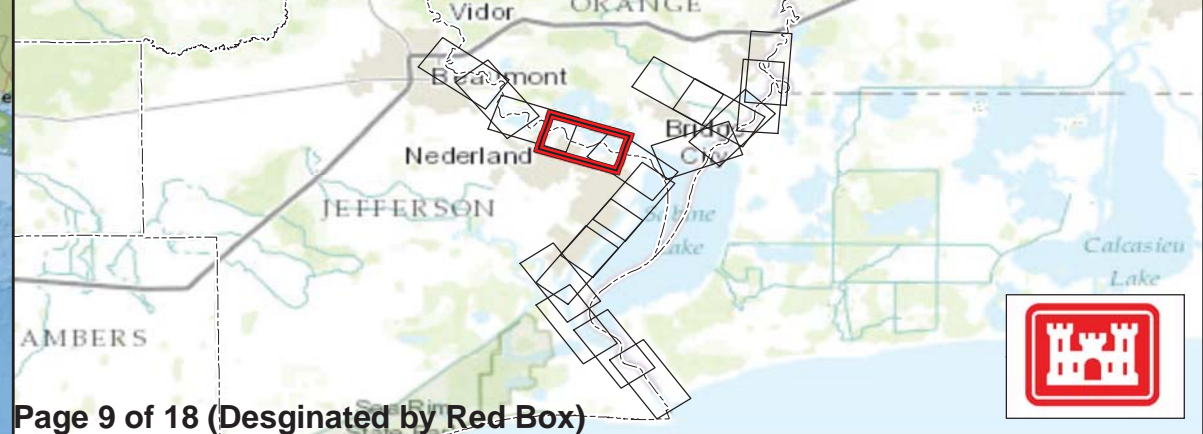
0 650 1,300 2,600 Feet

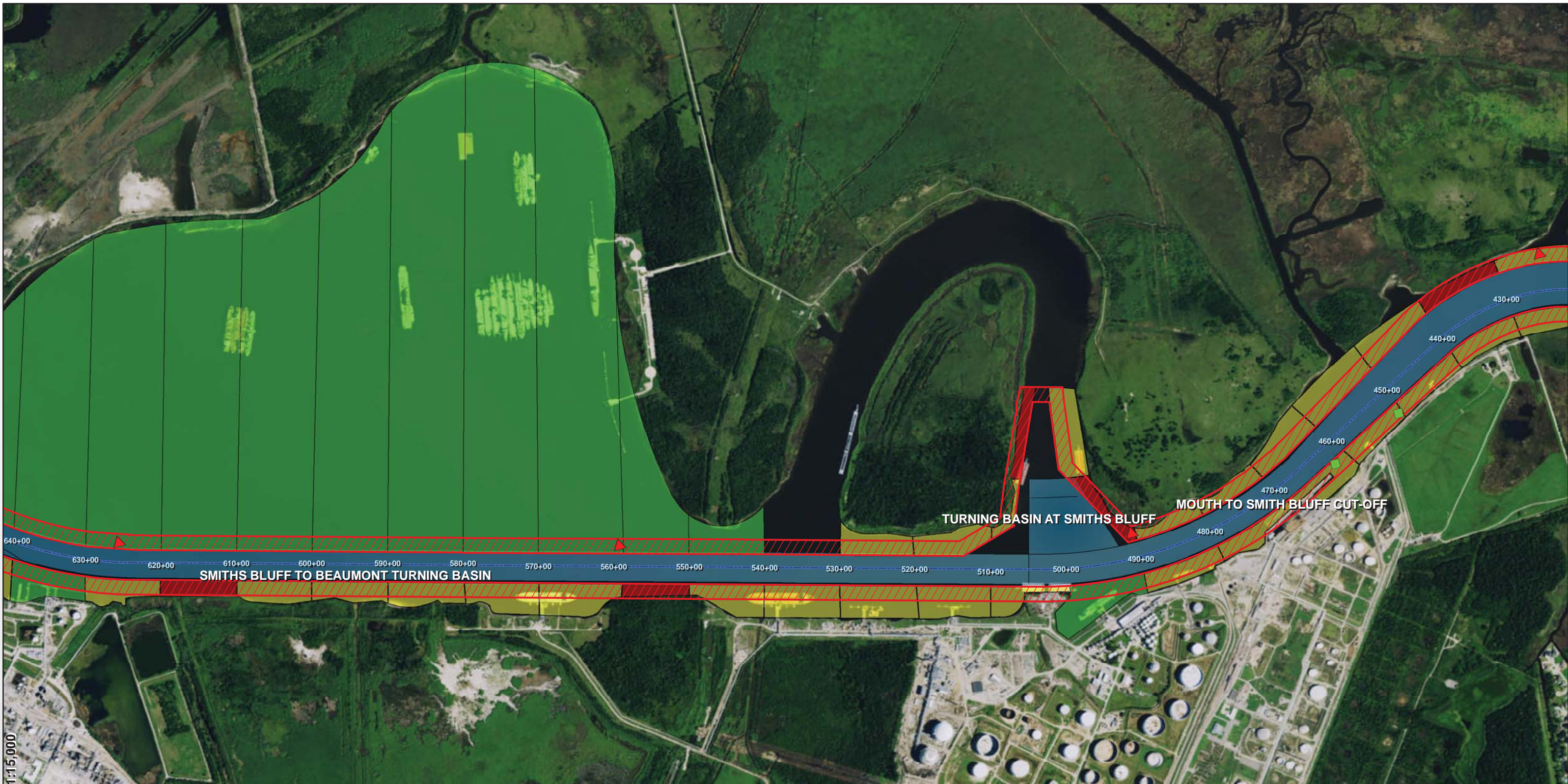
Mapped by: m3odnrvk
Date: 3/7/2016

Service Layer Credits: Sources: Esri, HERE, DeLorme, TomTom, Intermap, increment P Corp., GEBCO, USGS, FAO, NPS, NRCAN, GeoBase, IGN, Kadaster NL, Ordnance Survey,

Feature Map Imagery: NAIP/Texas 2014 (1m)

This product is reproduced from geospatial information prepared by the U.S. Army Corps of Engineers. GIS data and product accuracy may vary. Data may be developed from sources of differing accuracy, accurate only at certain scales, based on modeling or interpretation, incomplete while being created or revised, etc. Using GIS products for purposes other than those for which they were created may yield inaccurate or misleading results. The Corps of Engineers reserves the right to correct, update, modify, or replace GIS products without notification.





— Channel Centerline

Setback Zones 48ft Alignment

- Low (>500ft)
- Medium (250-500ft)
- High (<250ft)
- SAFETY SETBACK ZONE (<196ft)

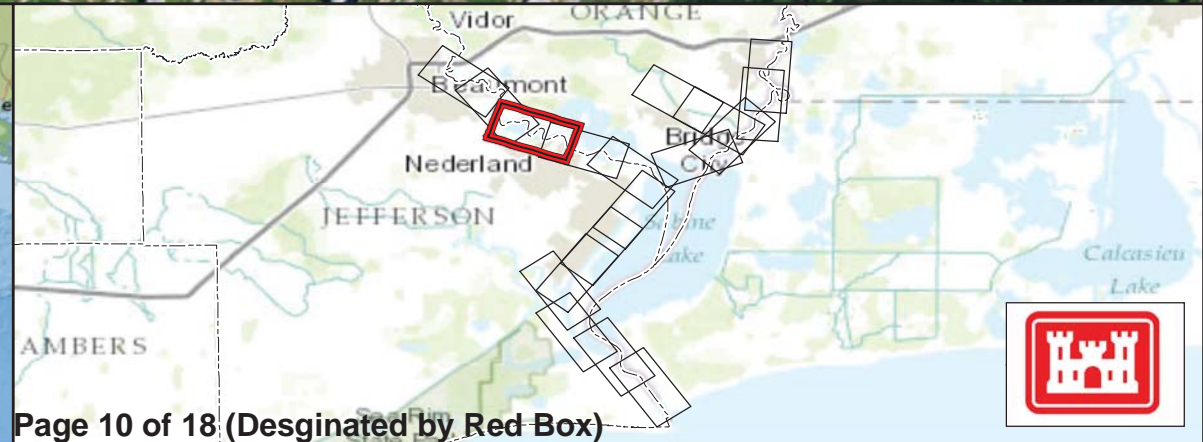
0 650 1,300 2,600 Feet

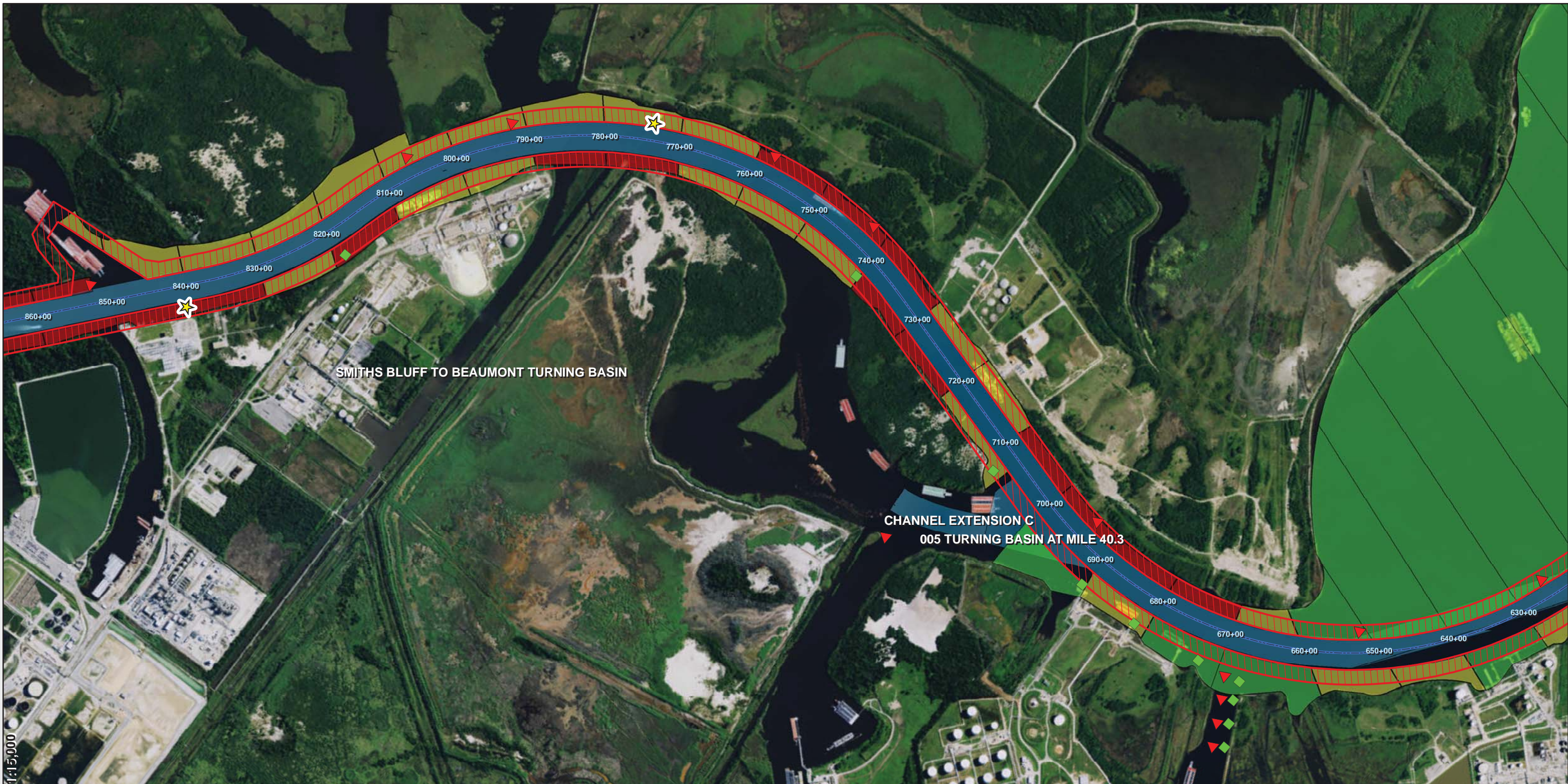
Mapped by: m3odnrvk
Date: 3/7/2016

Service Layer Credits: Sources: Esri, HERE, DeLorme, TomTom, Intermap, increment P Corp., GEBCO, USGS, FAO, NPS, NRCAN, GeoBase, IGN, Kadaster NL, Ordnance Survey,

Feature Map Imagery: NAIP/Texas 2014 (1m)

This product is reproduced from geospatial information prepared by the U.S. Army Corps of Engineers. GIS data and product accuracy may vary. Data may be developed from sources of differing accuracy, accurate only at certain scales, based on modeling or interpretation, incomplete while being created or revised, etc. Using GIS products for purposes other than those for which they were created may yield inaccurate or misleading results. The Corps of Engineers reserves the right to correct, update, modify, or replace GIS products without notification.





1:15,000

— Channel Centerline

Setback Zones 48ft Alignment

- Low (>500ft)
- Medium (250-500ft)
- High (<250ft)
- SAFETY SETBACK ZONE (<196ft)

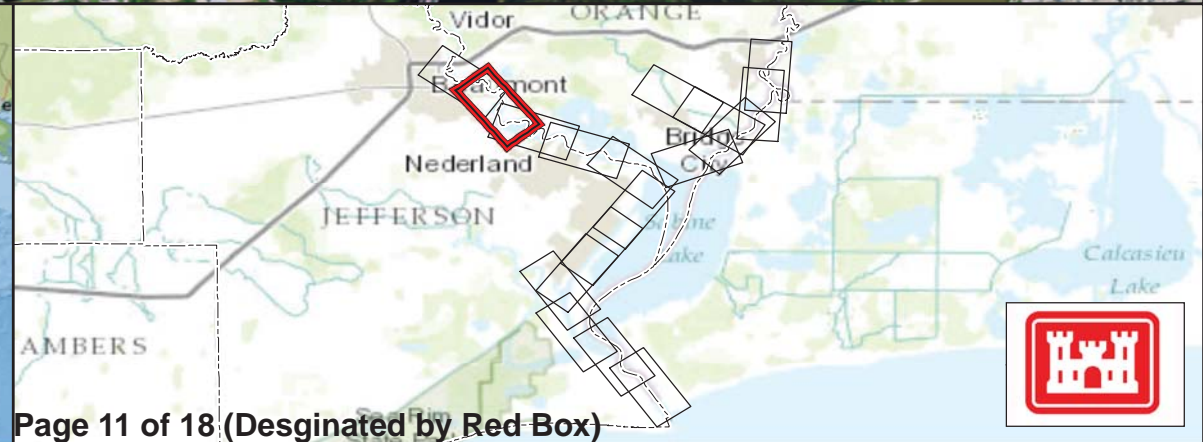
0 650 1,300 2,600 Feet

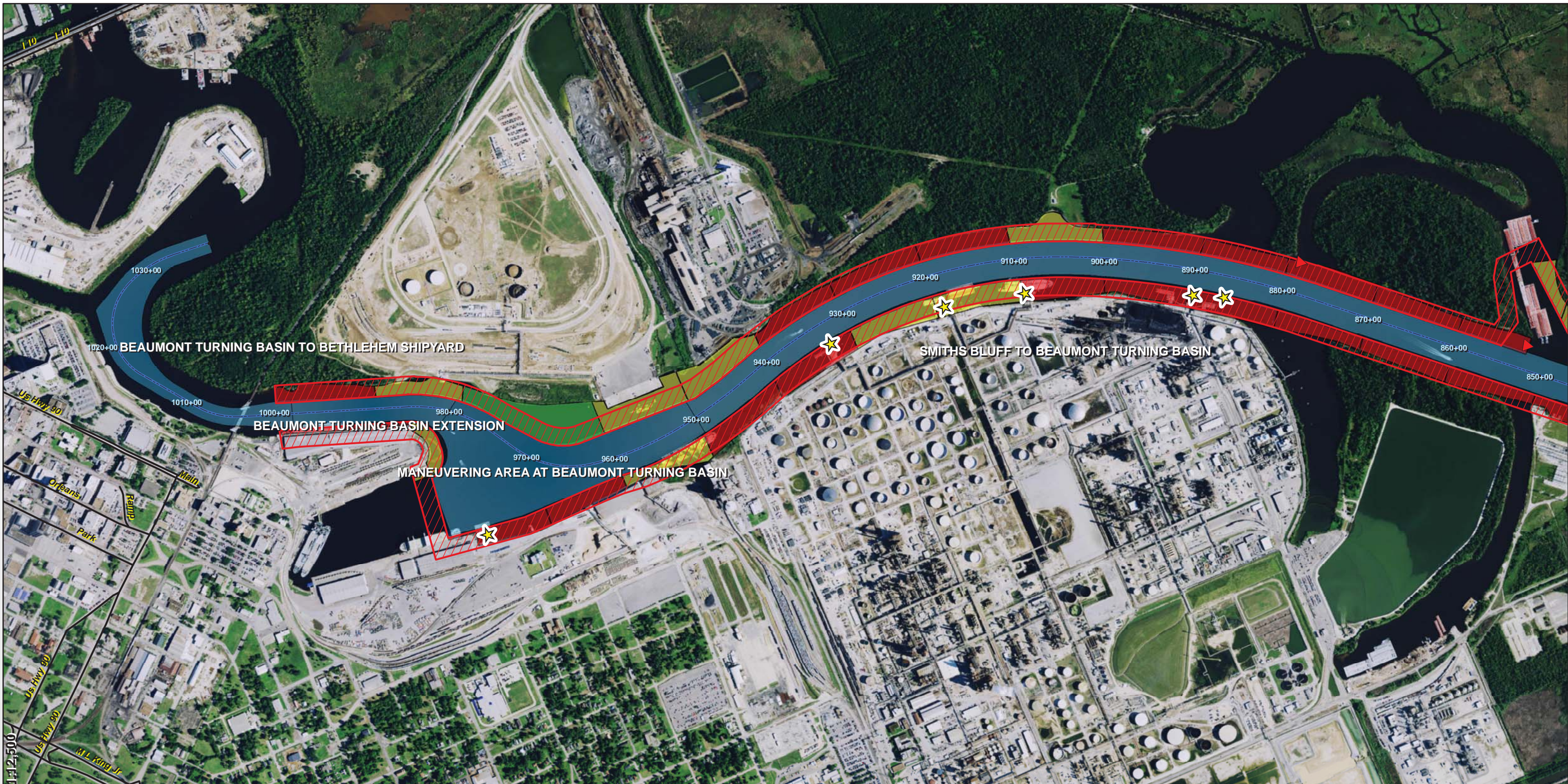
Mapped by: m3odnrvk
Date: 3/7/2016

Service Layer Credits: Sources: Esri, HERE, DeLorme, TomTom, Intermap, increment P Corp., GEBCO, USGS, FAO, NPS, NRCAN, GeoBase, IGN, Kadaster NL, Ordnance Survey,

Feature Map Imagery: NAIP/Texas 2014 (1m)

This product is reproduced from geospatial information prepared by the U.S. Army Corps of Engineers. GIS data and product accuracy may vary. Data may be developed from sources of differing accuracy, accurate only at certain scales, based on modeling or interpretation, incomplete while being created or revised, etc. Using GIS products for purposes other than those for which they were created may yield inaccurate or misleading results. The Corps of Engineers reserves the right to correct, update, modify, or replace GIS products without notification.





— Channel Centerline

Setback Zones 48ft Alignment

- Low (>500ft)
- Medium (250-500ft)
- High (<250ft)
- SAFETY SETBACK ZONE (<196ft)

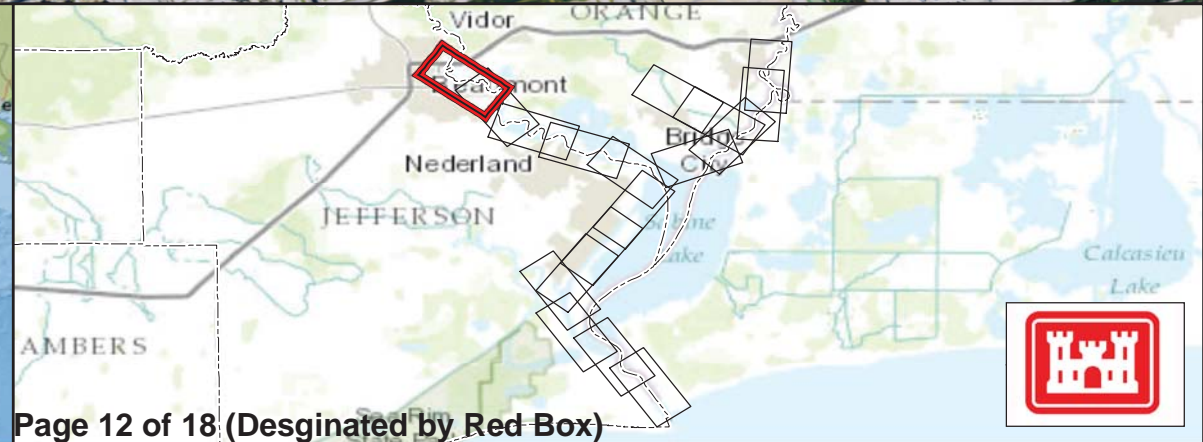
0 550 1,100 2,200 Feet

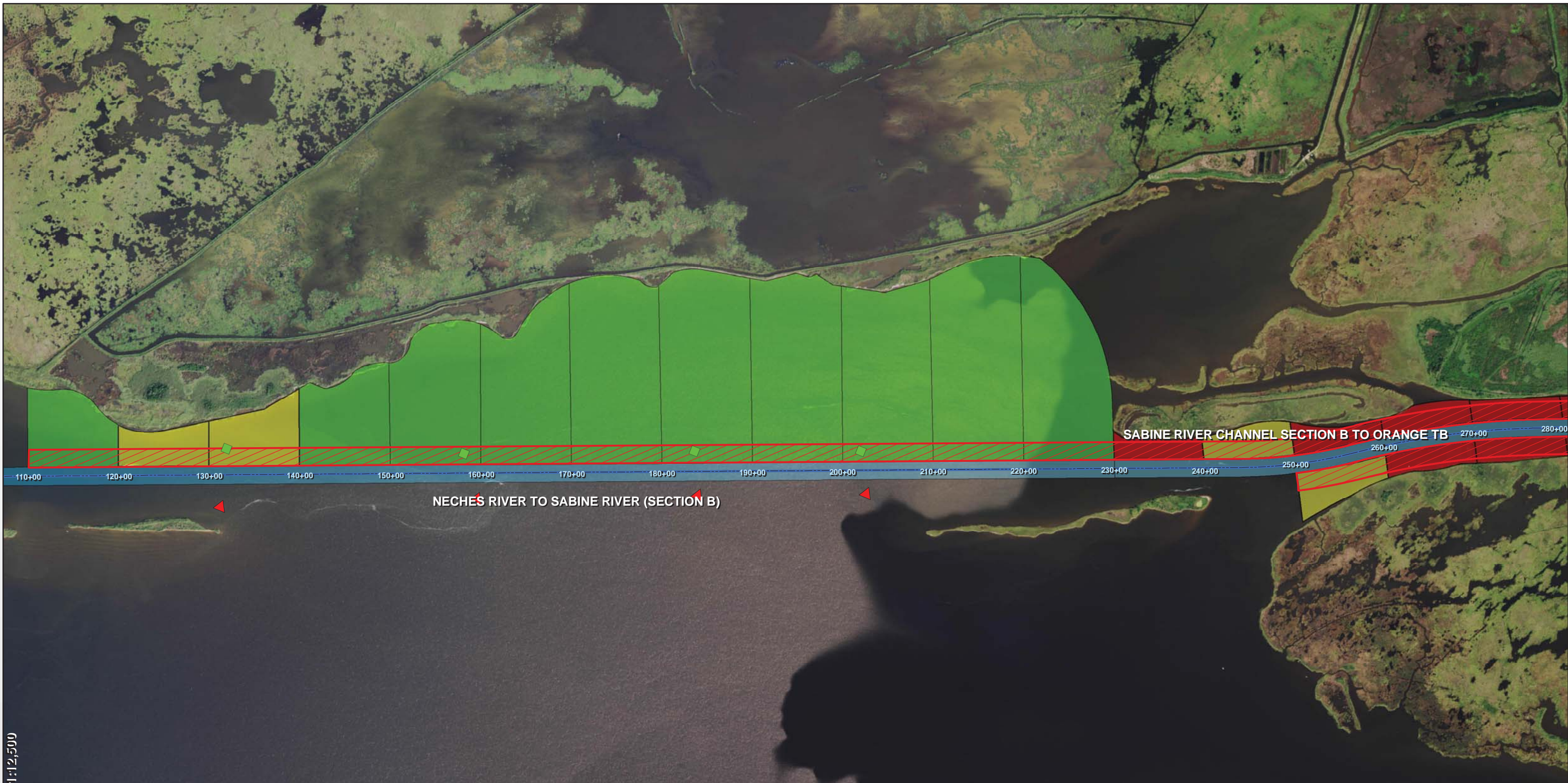
Mapped by: m3odnrvk
Date: 3/7/2016

Service Layer Credits: Sources: Esri, HERE, DeLorme, TomTom, Intermap, increment P Corp., GEBCO, USGS, FAO, NPS, NRCAN, GeoBase, IGN, Kadaster NL, Ordnance Survey,

Feature Map Imagery: NAIPTexas 2014 (1m)

This product is reproduced from geospatial information prepared by the U.S. Army Corps of Engineers. GIS data and product accuracy may vary. Data may be developed from sources of differing accuracy, accurate only at certain scales, based on modeling or interpretation, incomplete while being created or revised, etc. Using GIS products for purposes other than those for which they were created may yield inaccurate or misleading results. The Corps of Engineers reserves the right to correct, update, modify, or replace GIS products without notification.





1:12,500

— Channel Centerline

Setback Zones 48ft Alignment

- Low (>500ft)
- Medium (250-500ft)
- High (<250ft)
- SAFETY SETBACK ZONE (<196ft)

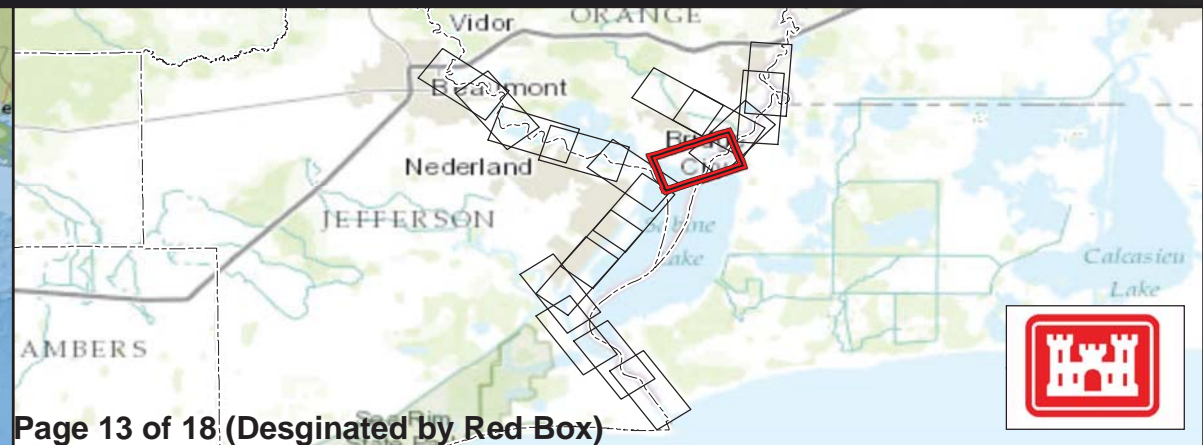
0 550 1,100 2,200 Feet

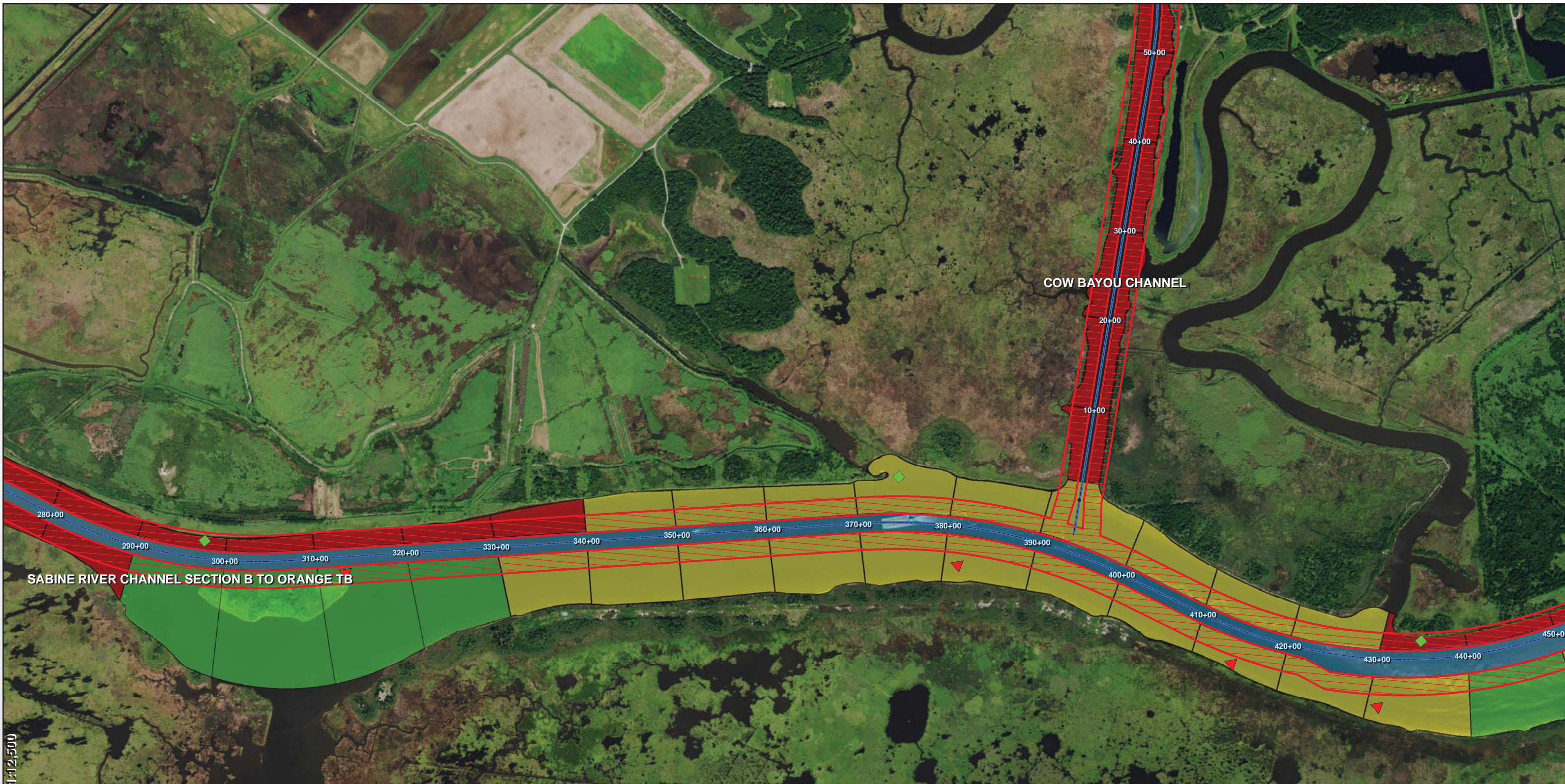
Mapped by: m3odnrvk
Date: 3/7/2016

Service Layer Credits: Sources: Esri, HERE, DeLorme, TomTom, Intermap, increment P Corp., GEBCO, USGS, FAO, NPS, NRCAN, GeoBase, IGN, Kadaster NL, Ordnance Survey,

Feature Map Imagery: NAIP/Texas 2014 (1m)

This product is reproduced from geospatial information prepared by the U.S. Army Corps of Engineers. GIS data and product accuracy may vary. Data may be developed from sources of differing accuracy, accurate only at certain scales, based on modeling or interpretation, incomplete while being created or revised, etc. Using GIS products for purposes other than those for which they were created may yield inaccurate or misleading results. The Corps of Engineers reserves the right to correct, update, modify, or replace GIS products without notification.





1:12,500

— Channel Centerline

Setback Zones 48ft Alignment

- Low (>500ft)
- Medium (250-500ft)
- High (<250ft)
- SAFETY SETBACK ZONE (<196ft)

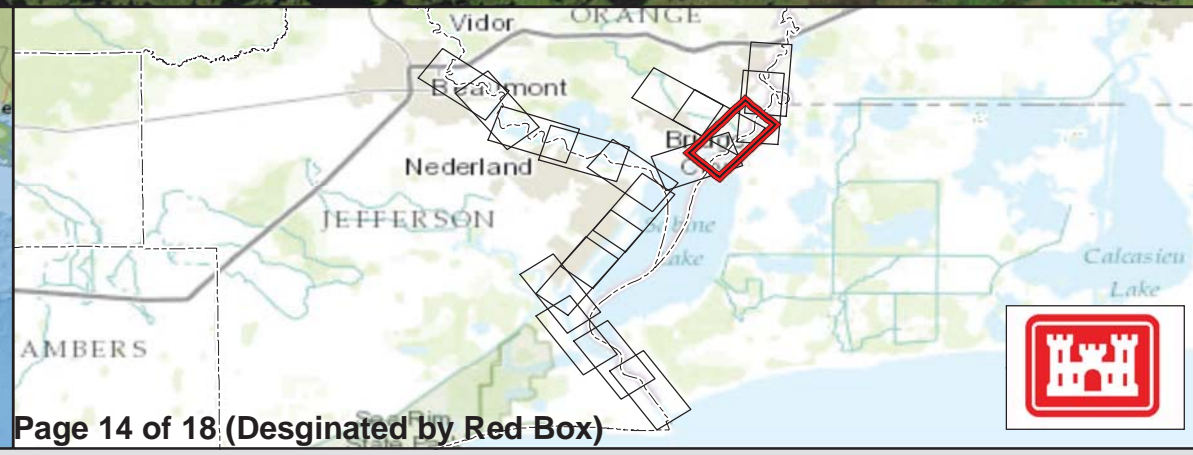
0 550 1,100 2,200 Feet

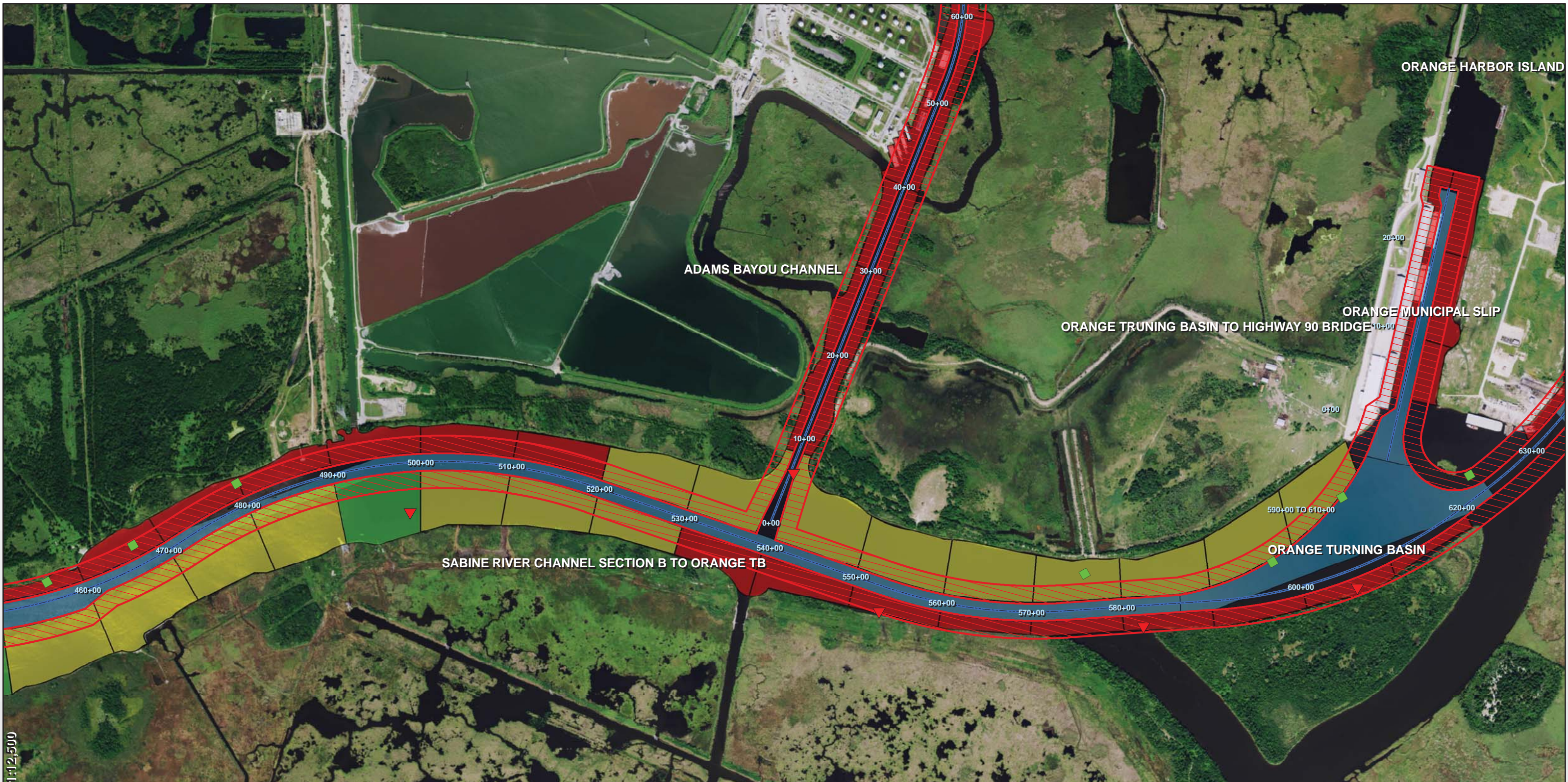
Mapped by: m3odnrvk
Date: 3/7/2016

Service Layer Credits: Sources: Esri, HERE, DeLorme, TomTom, Intermap, increment P Corp., GEBCO, USGS, FAO, NPS, NRCAN, GeoBase, IGN, Kadaster NL, Ordnance Survey,

Feature Map Imagery: NAIP/Texas 2014 (1m)

This product is reproduced from geospatial information prepared by the U.S. Army Corps of Engineers. GIS data and product accuracy may vary. Data may be developed from sources of differing accuracy, accurate only at certain scales, based on modeling or interpretation, incomplete while being created or revised, etc. Using GIS products for purposes other than those for which they were created may yield inaccurate or misleading results. The Corps of Engineers reserves the right to correct, update, modify, or replace GIS products without notification.





1:12,500

— Channel Centerline

Setback Zones 48ft Alignment

- Low (>500ft)
- Medium (250-500ft)
- High (<250ft)
- SAFETY SETBACK ZONE (<196ft)

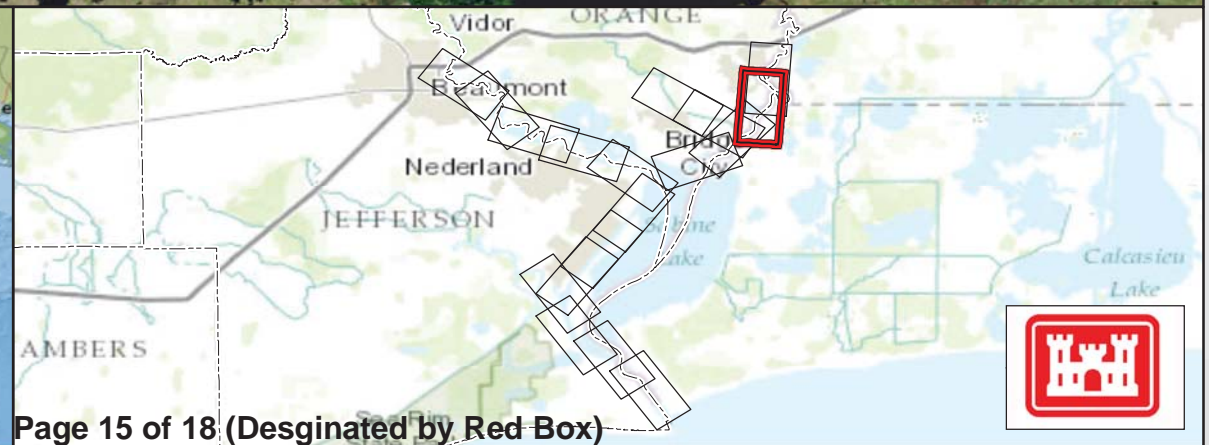
0 550 1,100 2,200 Feet

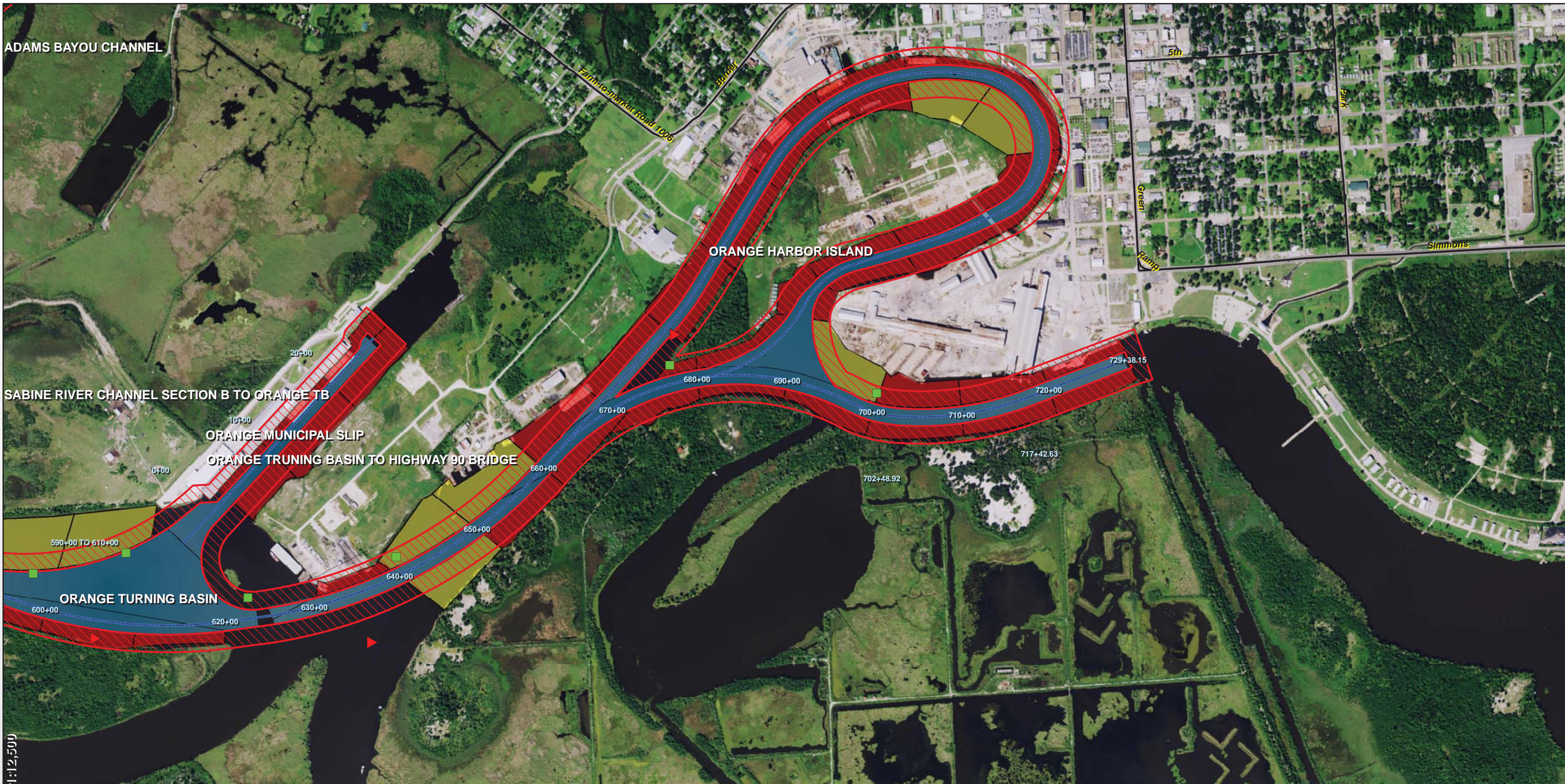
Mapped by: m3odnrvk
Date: 3/7/2016

Service Layer Credits: Sources: Esri, HERE, DeLorme, TomTom, Intermap, increment P Corp., GEBCO, USGS, FAO, NPS, NRCAN, GeoBase, IGN, Kadaster NL, Ordnance Survey,

Feature Map Imagery: NAIP/Texas 2014 (1m)

This product is reproduced from geospatial information prepared by the U.S. Army Corps of Engineers. GIS data and product accuracy may vary. Data may be developed from sources of differing accuracy, accurate only at certain scales, based on modeling or interpretation, incomplete while being created or revised, etc. Using GIS products for purposes other than those for which they were created may yield inaccurate or misleading results. The Corps of Engineers reserves the right to correct, update, modify, or replace GIS products without notification.





1:12,500

— Channel Centerline

Setback Zones 48ft Alignment

- Low (>500ft)
- Medium (250-500ft)
- High (<250ft)
- SAFETY SETBACK ZONE (<196ft)

0 550 1,100 2,200 Feet

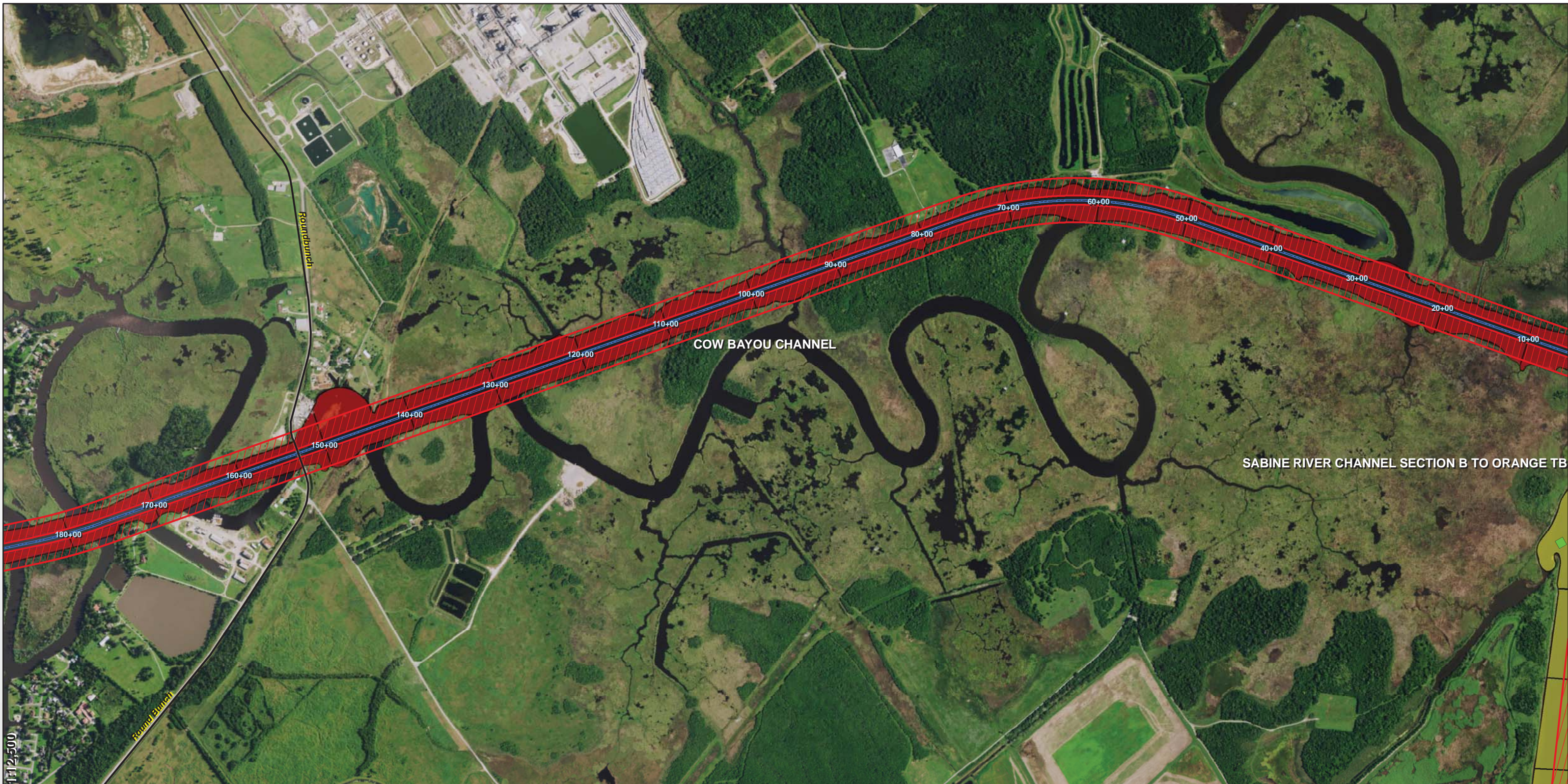
Mapped by: m3odnrvk
Date: 3/7/2016

Service Layer Credits: Sources: Esri, HERE, DeLorme, TomTom, Intermap, increment P Corp., GEBCO, USGS, FAO, NPS, NRCAN, GeoBase, IGN, Kadaster NL, Ordnance Survey,

Feature Map Imagery: NAIPTexas 2014 (1m)

This product is reproduced from geospatial information prepared by the U.S. Army Corps of Engineers. GIS data and product accuracy may vary. Data may be developed from sources of differing accuracy, accurate only at certain scales, based on modeling or interpretation, incomplete while being created or revised, etc. Using GIS products for purposes other than those for which they were created may yield inaccurate or misleading results. The Corps of Engineers reserves the right to correct, update, modify, or replace GIS products without notification.





— Channel Centerline

Setback Zones 48ft Alignment

- Low (>500ft)
- Medium (250-500ft)
- High (<250ft)
- SAFETY SETBACK ZONE (<196ft)

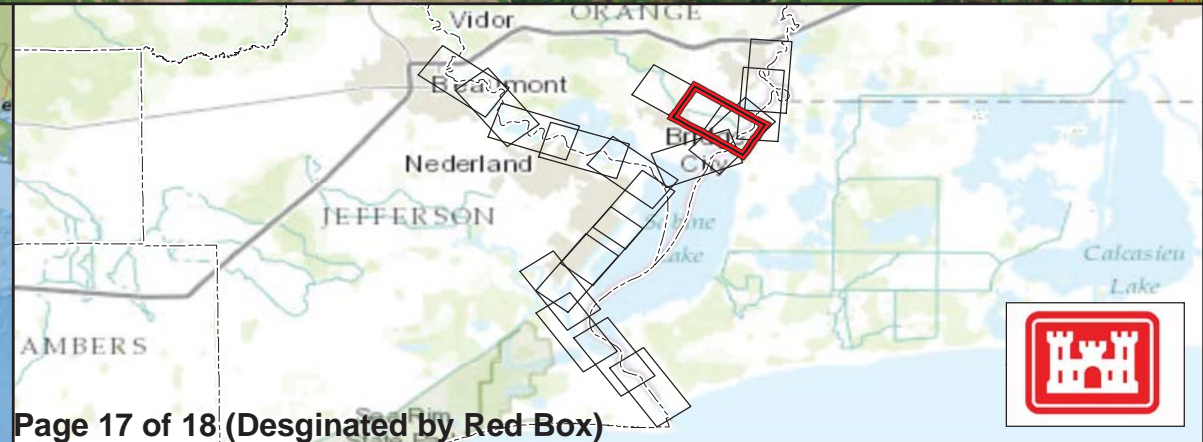
0 550 1,100 2,200 Feet

Mapped by: m3odnrvk
Date: 3/7/2016

Service Layer Credits: Sources: Esri, HERE, DeLorme, TomTom, Intermap, increment P Corp., GEBCO, USGS, FAO, NPS, NRCAN, GeoBase, IGN, Kadaster NL, Ordnance Survey,

Feature Map Imagery: NAIPTexas 2014 (1m)

This product is reproduced from geospatial information prepared by the U.S. Army Corps of Engineers. GIS data and product accuracy may vary. Data may be developed from sources of differing accuracy, accurate only at certain scales, based on modeling or interpretation, incomplete while being created or revised, etc. Using GIS products for purposes other than those for which they were created may yield inaccurate or misleading results. The Corps of Engineers reserves the right to correct, update, modify, or replace GIS products without notification.





— Channel Centerline

Setback Zones 48ft Alignment

- Low (>500ft)
- Medium (250-500ft)
- High (<250ft)
- SAFETY SETBACK ZONE (<196ft)

0 550 1,100 2,200 Feet

Mapped by: m3odnrvk
Date: 3/7/2016

Service Layer Credits: Sources: Esri, HERE, DeLorme, TomTom, Intermap, increment P Corp., GEBCO, USGS, FAO, NPS, NRCAN, GeoBase, IGN, Kadaster NL, Ordnance Survey,

Feature Map Imagery: NAIPTexas 2014 (1m)

This product is reproduced from geospatial information prepared by the U.S. Army Corps of Engineers. GIS data and product accuracy may vary. Data may be developed from sources of differing accuracy, accurate only at certain scales, based on modeling or interpretation, incomplete while being created or revised, etc. Using GIS products for purposes other than those for which they were created may yield inaccurate or misleading results. The Corps of Engineers reserves the right to correct, update, modify, or replace GIS products without notification.

