

# Southwestern Division

## *“Pacesetters”*



US Army Corps of Engineers  
**BUILDING STRONG**



# Corps of Engineers Footprint



Europe District



9 Divisions

Northwestern

South Pacific

Southwestern

North Atlantic

South Atlantic

Pacific Ocean

Great Lakes

Mississippi Valley

Transatlantic

43 Districts



**BUILDING STRONG**<sup>®</sup>



# Southwestern Division Footprint



**BUILDING STRONG®**

# Southwestern Division Leadership Team



Brig. Gen. David C. Hill  
SWD Commander



Colonel Donovan D. Ollar  
SWD Deputy Commander



Mr. Mark L. Mazzanti, SES  
Director of Programs



Mr. Pete G. Perez, SES  
Director of Regional Business



Colonel Calvin Hudson II  
Ft Worth District Commander



Colonel Lars Zetterstrom  
Galveston District Commander



Colonel Robert G. Dixon  
Little Rock District Commander



Colonel Christopher A. Hussin  
Tulsa District Commander

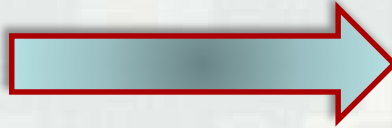


**BUILDING STRONG®**



# Southwestern Division Major Mission Areas

Civil Works



Military Programs



Interagency &  
International Services



**BUILDING STRONG®**

# Civil Works Mission Areas

## Water Supply

- Water storage enough to provide water to 4.5 million people or
- More than 70% of the Corps water supply



Lake Lavon, Texas

## Inland Navigation (MKARNS & GIWW)

- MKARNS: 18 locks & dams
- 423 miles of GIWW



Bull Shoals Powerhouse  
Arkansas

## Hydroelectric Power

- 18 power plants in 6 states produce 6.7 billion kw hours
- 87% of regional capacity, second in the Corps
- Generates power to 8 million customers in six states

## Recreation

- 20 percent of the Corps' total recreation projects located within the regional boundary
- 75 million visitors at 90 operating projects located in five states



Eufala Lake, Oklahoma

## Navigation (Ports and Channels)

- 3 of the Nation's "Top Ten" ports
- 32 channels (15 deep draft, 17 shallow draft)
- More than 500 M tons of commerce annually



Houston Ship Channel



Dallas Floodway

## Flood Damage Reduction

- 74 flood damage reduction lakes/reservoirs
- 33.22M acre-feet of flood storage
- 760 miles of local flood protection projects
- \$98 B in cumulative flood damage prevention

## Regulatory (work in waters & wetlands)

Regulators examine soils on a wetland delineation field visit.



**BUILDING STRONG®**



# Military Missions

- Engineering
- Construction
- Installation Support
- Environmental Engineering/services
- Interagency & International Services

Five States  
9 major Army Posts  
9 major Air Force Bases



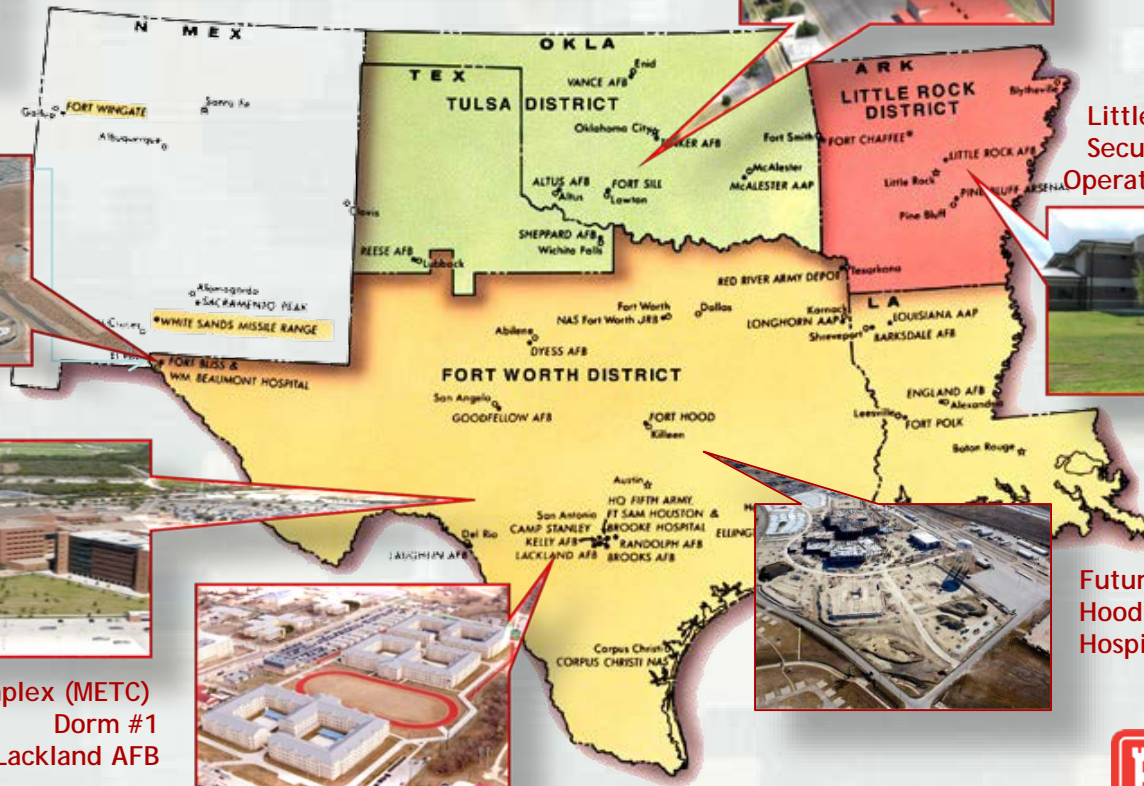
Support to Department of Homeland Security



Air Defense Artillery School  
Fort Sill



BRAC Program - Fort Bliss



Little Rock AFB Security Forces Operations Facility



San Antonio Military Medical Center



Medical Education & Training Complex (METC)  
Dorm #1  
Lackland AFB



Future Fort Hood Hospital



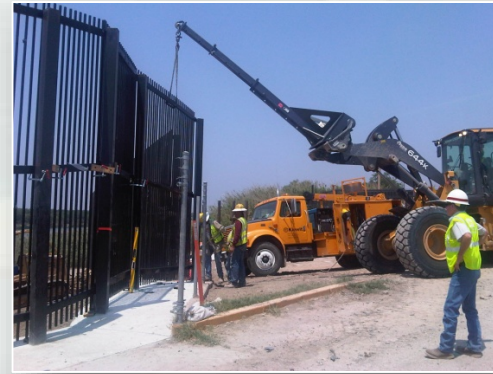
**BUILDING STRONG®**

# Interagency & International Services

Nogales, Ariz., Border Fence Replacement



Eagle Pass, Texas, Border Fence Construction



High Explosive Pressing Facility, Pantex Plant, OK



Ajo, Ariz., Border Patrol Station



Pittsburg, N.H. Land Point of Entry



**BUILDING STRONG®**



# Connect With Us!



Facebook:

[www.facebook.com/swdusace](http://www.facebook.com/swdusace)



Twitter:

[www.twitter.com/usace\\_swid](http://www.twitter.com/usace_swid)



Flickr:

[www.flickr.com/usaceswid](http://www.flickr.com/usaceswid)

DVIDS:



[www.dvidshub.net/unit/USACE-SWD](http://www.dvidshub.net/unit/USACE-SWD)

Online:

[www.swd.usace.army.mil](http://www.swd.usace.army.mil)



**BUILDING STRONG®**