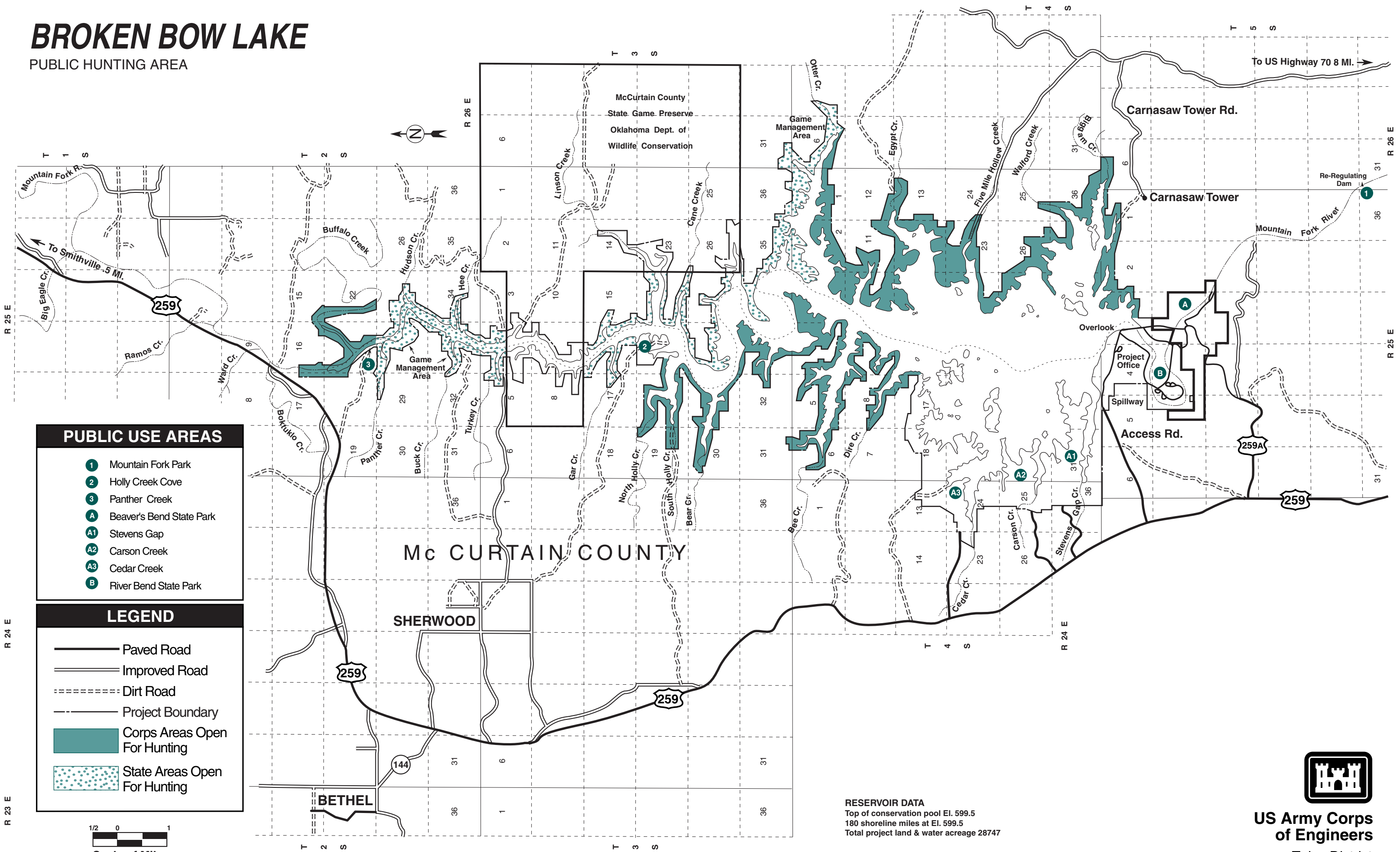


BROKEN BOW LAKE

PUBLIC HUNTING AREA

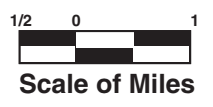


PUBLIC USE AREAS

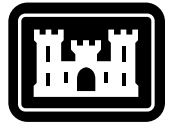
- 1 Mountain Fork Park
- 2 Holly Creek Cove
- 3 Panther Creek
- A Beaver's Bend State Park
- A1 Stevens Gap
- A2 Carson Creek
- A3 Cedar Creek
- B River Bend State Park

LEGEND

- Paved Road
- Improved Road
- Dirt Road
- Project Boundary
- Corps Areas Open For Hunting
- State Areas Open For Hunting



RESERVOIR DATA
 Top of conservation pool El. 599.5
 180 shoreline miles at El. 599.5
 Total project land & water acreage 28747



US Army Corps of Engineers
 Tulsa District

HUNTING GUIDE

BROKEN BOW LAKE

Hunting at Broken Bow Lake is in accordance with applicable Federal and state fish and wildlife regulations. Generally, all Corps lands are open to the public for hunting except developed recreational areas and lands around the dam and other structures. Camping is allowed in designated areas only. Hunting is prohibited in all public use areas. Hunters are urged to exercise the basic rules of good sportsmanship, safety, and common sense.

Hunters wishing to obtain current hunting regulations or construct duck blinds on Corps lands must contact the Oklahoma Department of Wildlife Conservation, 1801 N. Lincoln Blvd, Oklahoma City, OK 73105 (405) 521-2739. Duck hunters must obtain a permit from the Oklahoma Department of Wildlife Conservation prior to constructing duck blinds. Blinds must be removed at the close of waterfowl season.

Vehicles must remain on established roads. Public lands leased or licensed for private use are also open to public hunting and fishing. The lessee, in order to protect personal property, may be authorized to lock gates or prohibit nonofficial vehicles. However, this in no way prohibits public use of the area or prevents foot access across the land. The lessee or licensee is entitled to compensation from persons causing damage to crops or facilities belonging to them.

Additional information and regulations governing use of Corps land or water as outlined in Title 36 Code of Federal Regulations may be obtained at the Hugo Lake Office, (580) 326-3345, or from the Tulsa District Office, Corps of Engineers, 1645 S. 101st E. Avenue, Tulsa, OK 74128, (918) 669-7370.

Hunting maps of all Tulsa District lakes are available on the Corps internet site at www.swt.usace.army.mil



HELP PROTECT OUR PUBLIC LANDS

AND

HUNT SAFELY

