

**GENERAL PERMITS**  
**1993-10-M4, 1993-11-M4, 1993-12-M4, 1993-13-M4, and 1993-14-M4**

**DISCHARGES OF DREDGED OR FILL MATERIAL IN  
THE MUNICIPALITY OF ANCHORAGE**

EFFECTIVE DATE: \_\_\_\_\_ EXPIRATION DATE: \_\_\_\_\_

**INTRODUCTION**

Under the authority of Section 404 of the Clean Water Act (Public Law 95-217, 33 U.S.C. 1344 et seq.), the District Engineer (DE), Alaska District, U.S. Army Corps of Engineers (Corps) proposes to modify and reauthorize General Permits (GPs); GP-1993-10-M4 (Residential Development), GP-1993-11-M4 (Linear Infrastructure Development), GP-1993-12-M4 (Commercial Institutional and Community Development), GP-1993-13-M4 (Industrial Development) and GP-1993-14-M4 (Wetland Restoration and Enhancement). For activities which do not fall within the scope of these GPs, or which fail to meet the terms and conditions, are not authorized by these GPs, and a Department of the Army individual permit would be required.

These GPs would not supersede local wetland management plans or coastal management plans. These GPs do not supersede the Municipality of Anchorage's (MOA) authority to determine project compliance with current Title 21 Land Use Code or other Municipal requirements, as applicable. These GPs may be applied only where it does not conflict with an existing policy.

These GPs are valid for a period of five years from the date of reissuance. The DE may, at any time during this period, alter, modify, revoke, or suspend these permits if he deems such action to be in the public interest. Pursuant to Section 404 of the Clean Water Act (33 U.S.C. 1344), and in accordance with Title 33, CFR 325.2(e)(2), the District Engineer, Alaska District, U.S. Army Corps of Engineers (Corps), hereby modifies and renews Regional General Permits (GPs) for the discharge of dredged or fill material into certain wetlands within the Municipality of Anchorage (MOA), Alaska.

**AUTHORIZED ACTIVITIES AND LIMITATIONS**

**GP-1993-10-M4 (Residential Development)**

Authorizes site preparation, such as mechanized land clearing, and other discharges of dredged or fill material for residential developments, including primary and attendant structures, driveways, garages, sheds, on-site utilities, and yards.

**Limitations:**

- 1) The discharge must not cause the aggregate loss of greater than 1 acre of wetlands per single and complete project;
- 2) Building heights may not exceed 50 feet; and,
- 3) Fill and mechanized land clearing for driveways may not exceed 40 feet in width or 200 feet in length in wetlands (note: this does not authorize the installation of culverts into jurisdictional waterways);

**GP-1993-11-M4 (Linear Infrastructure Development)**

Authorizes site preparation, such as mechanized land clearing, and other discharges of dredged or fill material for certain roads (as limited below), as well as linear utility installations and associated attendant features.

**Limitations:**

- 1) The discharge must not cause the aggregate loss of greater than 1 acre of wetlands per single and complete project;



- 2) The total width of fill and mechanized land clearing for the road corridor—including trails, sidewalks, landscaping, and drainage swales—may not exceed 75 feet; and,
- 3) New arterial roads, as defined in the current Title 21 Land Use Code are not eligible for this GP. Work on arterials is limited to:
  - a) Minor widening;
  - b) Addition of turn lanes at individual intersections;
  - c) Minor modifications to existing on- and off-ramps;
  - d) Installation or modification of lights and traffic control/warning devices;
  - e) Construction or modification of bus stops or other similar transit facilities;
  - f) Landscaping and fencing;
  - g) Installation of guard rails and other safety measures;
  - h) Improvements for sight distance; and,
  - i) Minor, general maintenance, including ditch cleaning and drainage structure repair or replacement.

**GP-1993-12-M4 (Commercial, Institutional and Community Development)**

Authorizes site preparation, such as mechanized land clearing, and other discharges of dredged or fill material for commercial, institutional and community developments, including parking areas.

**Limitations:**

- 1) The discharge must not cause the aggregate loss of greater than 1 acre of wetlands per single and complete project;
- 2) Commercial activities are limited to businesses defined in the current Title 21 Land Use Code; and,
- 3) This GP does not authorize projects that include:
  - a) Direct discharge of wastewater to waters of the U.S.;
  - b) Underground fuel storage tanks;
  - c) New stationary sources of air pollution point source, other than normal heating and power for buildings;
  - d) Maintenance activities that may cause releases or spills of hydrocarbons that could run off into waters of the U.S.;
  - e) Storage of hazardous materials or wastes, as defined by the Solid Waste Disposal Act, as amended by the Resource Conservation and Recovery Act (RCRA), 42 U.S.C. 6901 et seq.; or
  - f) Use of hazardous substances (as defined above) other than de minimis use of common substances for minor, routine cleaning and maintenance incidental to the primary purpose of the permitted activity.

**GP-1993-13-M4 (Industrial Development)**

Authorizes site preparation, such as mechanized land clearing, and other discharges of dredged or fill material for certain industrial and storage facilities (as limited below) and attendant features, such as offices, salesrooms and parking areas.

**Limitations:**

- 1) The discharge must not cause the aggregate loss of greater than 1 acre of wetlands per single and complete project;
- 2) Products assembled, stored and/or distributed as a primary purpose of the activity are limited to those constructed of inert materials, such as concrete, steel or wood, excluding any treated with preservatives other than paint;
- 3) Outdoor storage and distribution is limited to marshalling yards where commercial or industrial products are stored and/or organized for distribution;
- 4) This GP does not authorize projects that include, as a primary activity:
  - a) Equipment repair or servicing, other than minor, routine operations on equipment that is incidental to the primary industrial activity;
  - b) Commercial automobile repair garages;
  - c) Natural resource product processing;
  - d) Gravel or peat mining;
  - e) Dry cleaning operations;
  - f) Hazardous waste disposal;
  - g) Battery transfer yards; or,
  - h) Fuel storage sites; and,
- 5) This GP does not apply to projects that include:
  - a) Direct discharge of wastewater to waters of the U.S.;
  - b) Underground fuel storage tanks;
  - c) New stationary sources of air pollutants, other than normal heating and power for buildings;
  - d) Maintenance activities that may cause releases or spills of hydrocarbons which could run off into waters of the U.S.;
  - e) Storage of hazardous materials or wastes, as defined by the Solid Waste Disposal Act, as amended by the Resource Conservation and Recovery Act (RCRA), 42 U.S.C. 6901 et seq.; or,
  - f) Use of hazardous substances (as defined above) other than de minimis use of common substances for minor, routine cleaning and maintenance incidental to the primary purpose of the permitted activity.

**GP-1993-14-M4 (Wetland Restoration and Enhancement)**

Authorizes site preparation and other discharges of dredged or fill material for wetland, habitat and water quality restoration or enhancement projects.



### THE FOLLOWING APPLY TO ALL OF THESE GPs

- 1) These GPs apply to activities authorized under Section 404 of the Clean Water Act, including mechanized land clearing and all activities that constitute the discharge of fill material into waters of the U.S., including wetlands, under the jurisdiction of the Corps.
- 2) These GPs apply to the wetlands identified in **Attachment A**. These wetlands generally include **most** of those designated as "C" in the MOA Planning Department's current Anchorage Wetlands Management Plan (AWMP), as well as **certain** undesignated wetlands. These GPs **do not** apply to marine or estuarine waters, streams, rivers, lakes, or ponds, "A" or "B" wetlands (as designated by the AWMP), nor to unmapped or undesignated wetlands not listed in **Attachment A**. Permit applicants are strongly encouraged to be sure that the wetland unit they intend to develop is covered by these GPs prior to making serious commitments.

Better maps may be available in paper copy from the MOA Planning Department (907-343-7921) or the Corps Regulatory Division office (907-753-2712). Updated maps are available through the MOA's website, <http://anchoragestormwater.com/maps.html>

The wetland boundaries on all of these maps are approximate. In some instances, a wetland delineation or jurisdictional determination may be necessary. Entities interested in developing property encompassing or adjacent to the depicted wetlands should contact the Corps Regulatory Division or the MOA Planning Department for a precise delineation of wetland boundaries or have a wetland delineation performed with a request for an Approved Jurisdictional Determination from the Corps provided prior to jurisdictional activities. A request for an approved Jurisdictional Determination can be found at:

<http://www.poa.usace.army.mil/Portals/34/docs/regulatory/JD%20Request%20Form.pdf>

### CONDITIONS OF THESE GENERAL PERMITS

All activities identified and authorized by these GPs shall be consistent with the conditions listed below. All activities shall be consistent with the Anchorage Wetlands Management Plan (AWMP), Title 21 Land Use Code and the Alaska Pollution Discharge Elimination System (APDES) Program. The Corps can also add Special Conditions to a GP verification, as applicable.

- 1) Obtain GP verification prior to activity: No work shall be done under these GPs without first obtaining an Opinion of Compliance (OC) from the MOA Planning Department or General Permit Verification from the Corps. If applicable, a copy of the Municipal building permit application and grade/fill permit application or Land Use permit application should be included with the GP application. All fees, including compensatory mitigation, must be paid before proceeding with jurisdictional activities.
- 2) Time limit: Verification under these GPs is valid until **(April 30, 2020)**, unless the GPs are modified, reissued or revoked. It is incumbent upon the applicant to remain informed of changes to the GPs.
- 3) Fill material:
  - a) Suitable material: No activity may use unsuitable material (e.g., trash, debris, car bodies and asphalt). Material used for construction or discharged must be free from toxic pollutants in toxic amounts (see Section 307 of the Clean Water Act).
  - b) Building construction: Fill for building construction must be of a quality and height that complies with the Municipal building safety standards in the MOA Title 23 Building Codes and associated amendments.
  - c) Speculative fill: These GPs do not apply to speculative fills. For activities to comply with these GPs, the need for the proposed activity must clearly be demonstrated in the application.
  - d) Excess material: These GPs do not apply to projects whose primary purpose is the disposal of excess material, such as from road projects.
  - e) Borrow material: No borrow material may be obtained from estuarine, riverine, "A"-designated or "B"-designated wetlands for activities covered under these GPs.



- f) Removal of temporary fills: Temporary fills must be removed in their entirety and the affected areas returned to pre-construction elevations. The affected areas must be revegetated, as appropriate.
- 4) Mitigation:
- a) The activity must be designed and constructed to avoid and minimize adverse effects, both temporary and permanent, to waters of the U.S. to the maximum extent practicable at the project site.
  - b) Mitigation in all its forms (avoiding, minimizing, rectifying, reducing, or compensating for resource losses) will be required to the extent necessary to ensure that the adverse effects to the aquatic environment are minimal.
  - c) Compensatory mitigation will be required for all wetland losses that would result in a loss of greater than 0.02-acre unless the district engineer determines in writing that either some other form of mitigation would be more environmentally appropriate or the adverse effects of the proposed activity are minimal, and provides a project specific waiver of this requirement and obtains written concurrence from the MOA Planning Department and the Corps prior to conducting work authorized under these GPs. Compensatory mitigation projects provided to offset losses of aquatic resources must comply with the applicable provisions of 33 CFR part 332.
- 5) Setback: Where there are wetlands along or around a stream or water body, the project shall include and maintain a non-disturbance setback, measured horizontally from the ordinary high water mark, as specified in Attachment A. Applicants shall contact the MOA Planning Department or Corps to obtain or confirm delineation of the setback. The setback extends only as far as the outer edge of the adjacent wetland boundary. Setbacks greater than 25 feet wide do not extend into non-wetlands. For previously unplatted residential subdivisions, the setback area would be tracted out, rather than being included in individual lots.
- Projects on sites requiring setbacks would include a permanent fence, either split-rail or other, to serve as a physical barrier that maintains the integrity of the non-disturbance setback. This fence shall be placed on the proposed new fill, outside of the setback. Both the setback area and the fence shall be clearly depicted on the proposed plans submitted with the GP application.
- 6) Buffer: The project shall include and maintain a non-disturbance buffer area, as specified in Attachment A. Applicants shall contact the MOA Planning Department or Corps to obtain or confirm delineation of the buffer. Projects on sites requiring a buffer shall include a permanent fence, either split-rail or other, to serve as a physical barrier that maintains the integrity of the non-disturbance buffer zone.
- This fence shall be placed on the proposed new fill, outside of the buffer zone. Both the buffer area and the fence would be clearly depicted on the proposed plans submitted with the GP application.
- 7) Delineation of project boundary: Project boundaries shall be staked, flagged or otherwise clearly delineated prior to the commencement of the authorized activity to prevent inadvertent encroachment of adjacent wetlands.
- 8) Equipment: Heavy equipment working in wetlands must be placed on mats or other measures must be taken to minimize soil disturbance.
- 9) Soil erosion and sediment controls: Appropriate soil erosion and sediment controls must be used and maintained in effective operating condition during construction, and all exposed soil and other fills, must be permanently stabilized at the earliest practicable date. Disturbed areas shall be stabilized immediately after construction with revegetation commencing concurrent with the stabilization efforts or as soon as climatic conditions allow (first growing season after construction activities commence). Revegetation shall not include non-native or invasive species and shall use native soils and overburden from the site to the greatest extent practicable. Active revegetation efforts by the permittee shall continue until the site has enough cover to prevent erosion without additional BMPs, and shall include, but not limited to, watering and reseeding/transplanting as needed.



10) Contaminated soil: If contaminated soils are discovered during construction, all work in the area must cease and the Alaska Department of Conservation (ADEC) notified for instructions. Work will not continue until ADEC approval is given.

11) Endangered Species: The activity must not jeopardize the continued existence of a threatened or endangered species nor endanger the critical habitat of such species, as identified under the Endangered Species Act. All activities that "may affect" any ESA threatened or endangered species or designated Critical Habitat are not authorized until Section 7 consultation addressing the effects has been completed for that activity.

12) Essential Fish Habitat (EFH): These GPs **do not** apply to marine or estuarine waters, streams, rivers, lakes, or ponds and would not apply if EFH is adversely affected.

13) Historic properties: No cultural resources shall be adversely affected by activities authorized by this GP. If the permittee discovers any previously undiscovered archeological, paleontological, or historic resource, while conducting activities authorized by this GP, the DE must be immediately notified by calling (800) 478-2712. The Corps will notify the Alaska State Historic Preservation Office of what has been found. The Corps or the appropriate federal land manager will initiate the Federal and State coordination required to determine if the remains warrant a recovery effort or if the site is eligible for listing in the National Register of Historic Places.

14) Inspection: The applicant shall allow the DE or their authorized representative(s) and/or a representative from the MOA Planning Department to inspect authorized work at any time deemed necessary to assure that on-going and completed work is in compliance with the terms and conditions of these GPs.

15) Proper maintenance: Any authorized fill shall be properly maintained, including maintenance to ensure public safety and compliance. The applicant must maintain the lands and facilities subject to these GPs in good condition and in conformance with the terms and conditions of these GPs. The applicant is not relieved of this requirement even if the activity is abandoned. The applicant may transfer the permit to a third party. Should the applicant cease to maintain the authorized activity or should they desire to abandon the project without a transferee, then the applicant must obtain approval from the Corps and/or the MOA Planning Department, which may require restoration of the area.

16) Transfer of General Permit: If the applicant sells or wishes to transfer the property associated with the authorized activity, the applicant must obtain the signature of the new property owner or lessee in the appropriate space on the verification/OC and submit a copy of that page to the MOA Planning Department and/or Corps, along with appropriate documentation of the transaction. All information must be submitted within 30 days of the property transfer to validate the transfer of the GP authorization to the new party.

17) Tribal Rights: No activity or its operation may impair reserved tribal rights, including, but not limited to, reserved water rights and treaty fishing and hunting rights.

18) Modification by other authorization: If the work proposed under these GPs is subsequently modified by any other Federal, State, or local governmental authorization, a modification of the GPs, MOA Planning Department's Opinion of Compliance, and any verification by the Corps to perform activities under these GPs may need to be obtained.

19) Use of multiple general permits, including Nationwide Permits: The use of more than one GP or Nationwide Permit (NWP) for a single and complete project is prohibited, except when the acreage loss of waters of the United States authorized by the GPs and/or NWPs does not exceed the acreage limit of the GP/NWP with the lowest specified acreage limit.

20) No adverse impact to adjacent waters of U.S.: For activities to comply with these GPs they shall not adversely impact adjacent estuarine, riverine, "A" and "B" wetlands or other adjacent areas by



causing ponding, drainage (dewatering), siltation or inadvertent fill. Installation of culverts, buffer zones, or other methods may be required to ensure compliance with this condition.

### **APPLICATION PROCEDURES**

Any entity may apply for authorization by submitting an application packet to the MOA Planning Department. The application packet can be found at <http://www.muni.org/Departments/OCPD/Planning/Physical/EnvPlanning/Documents/GP%20Application-April2014-rev1.pdf> or by contacting the MOA Planning Department.

Should the review process initiated by the MOA Planning Department result in a determination that the GPs do, in fact, apply to the project, the applicant will receive a conditioned verification signed by the Corps or an Opinion of Compliance (OC) to review. The GP authorization will not take effect and work will not be authorized until the verification or OC is signed by both the applicant and the Corps (for a verification) or MOA Planning Department staff (for an OC) and all fees, including any mitigation fees, are paid.

GP applications submitted by applicants and/or agents with outstanding 404 wetland violations **will not** be accepted or reviewed until the outstanding violation and/or enforcement action is resolved and closed.

Applicants and/or agents with outstanding 404 wetland violations include the following:

- a. Applicant business entities, an officer or director of which is the subject of an outstanding Section 404 violation.
- b. Applicant business entities owned or controlled by an individual, who is the subject of an outstanding Section 404 violation.

Such applicants may elect to submit an individual permit application to the Corps.

**NOTE:** These GPs do not require notification directly to, or verification directly from, the Corps, unless a compensatory mitigation waiver is required. If so desired, however, the project proponent may seek such verification by submitting the application packet directly to the Corps instead of to the MOA Planning Department.

Additionally, a request for a time extension to complete permitted work or a change in design or purpose will require a new verification or opinion of compliance.

Visit our web site (<http://www.poa.usace.army.mil/reg/contactus.htm>), or call us (Toll-free in Alaska at (800) 478-2712, or (907) 753-2712) to locate the applicable office to send your permit request.

### **AUTHORIZATION PROCESS**

Applicant submits a request to the Corps or the MOA Planning Department for a permit by methods outlined in the application procedures above.

The MOA Planning Department reviews the application and preliminarily determines whether one or more of these GPs are applicable. For activities not authorized by these GPs, the applicant or agent shall contact the Corps (or submit an application to the Corps).

Once the GP application is considered complete, the MOA Planning Department will forward the application to the Corps requesting a permit reference number before proceeding. If the application is deemed incomplete or the project ineligible, the MOA Planning Department will advise the applicant of any additional information or project revisions that are necessary to proceed under these GPs (or local construction and permit requirements).

Depending on the type and size of the proposed GP-eligible project, the MOA Planning Department will initiate a General Permit Agency Coordination (GPAC), as part of the review process. Projects requiring GPACs are as follows:



GP#	Type of Project	Extent of Wetlands Involved	GPAC Required?
GP-1993-10-M4  (residential development)	Subdivision, developing more than one individual lot	Any	Yes
	Single lot residential development	<16,500 square feet (sf)	No
		>16,500 sf	Yes
GP-1993-11-M4  (linear infrastructure development)	Work on existing Arterial Road	Any	Yes
	Residential Subdivision Infrastructure	Any	Yes
	Other	<16,500 sf	No
		>16,500 sf	Yes
GP-1993-12-M4  (commercial, institutional & community development)	Any	≤16,500 sf	No
		>16,500 sf	Yes
GP-1993-13-M4  (industrial development)	Any	Any	Yes
GP-1993-14-M4  (wetland restoration & enhancement)	Any	Any	Yes

For projects that do require a GPAC, the MOA Planning Department's initial review and actions to ensure the application is complete will be followed by:

- 1) Transmittal of the application packet to the Corps, as well as Federal, State and local resource agencies (i.e., Environmental Protection Agency, U.S. Fish and Wildlife Service, National Marine Fisheries Service, Alaska Departments of Environmental Conservation, Fish and Game, SHPO and Natural Resources (Offices of Habitat Management and Permitting, and Project Management and Permitting) and MOA PM&E);
- 2) A ten-calender-day initial review period, during which time agencies will notify the Corps if they have any concerns about the proposal;
- 3) Direction from the Corps to the MOA Planning Department regarding how any concerns are to be resolved.

Upon receiving direction from the Corps, the MOA Planning Department will proceed with supplying either an opinion of compliance, a Corps-signed conditioned verification to the applicant, or offer the applicant an opportunity to address concerns raised during the review not to exceed thirty calendar days from the close of the coordination period.

For projects that do not require a GPAC, the MOA Planning Department will determine what, if any, Special Conditions are necessary, and supply a conditioned OC for the applicant's review and acceptance. The OC takes effect and becomes official once signed by both parties. The OC is not legally binding on the Federal government, but is intended to provide a measure of assurance that the



proposed project will comply with the terms and conditions of the GPs. The MOA Planning Department will confer with the Corps on questionable or borderline proposals before supplying the OC.

### **INSPECTION**

The MOA Planning Department will inspect sites of GP-authorized work, to determine whether the work is being, or has been, performed in conformance with the terms and conditions of these GPs. Should an activity appear not to be in compliance with the GPs, the MOA Planning Department will expeditiously report the apparent non-compliance to the Corps and/or take measures to resolve the violation, within its independent authority through the Development Services Department, Land Use Enforcement Division.

### **MONITORING**

#### **MOA Planning Department:**

**Inspections:** The MOA Planning Department shall inspect at least 20% of the activities authorized by the GPs each year, to determine whether the work is being, or has been, performed in conformance with the terms and conditions of these GPs.

**Quarterly Reports:** On a quarterly basis, the MOA Planning Department shall provide the Corps with the following information on GP activities for that quarter:

- 1) Copies of all applications and required supporting documentation/analyses;
- 2) Total acreage of wetland fill and mechanized land clearing verified, by watershed;
- 3) Copies of all OCs; and,
- 4) A log, by watershed, of the GP sites inspected, including findings and actions taken.

Reports shall be submitted by the 10<sup>th</sup> of the month following the end of each calendar year quarter.

**Annual Reports:** By January 15<sup>th</sup> of each year, the MOA Planning Department will provide the Corps with the following information on GP activities for the preceding year:

- 1) Total number of OCs provided, by watershed;
- 2) Total acreage of wetland fill mechanized land clearing verified and for each GP, by watershed;
- 3) Total cubic yards of wetland fill involved, by watershed;
- 4) Average processing time per application; and,
- 5) total number of GP sites inspected, by watershed.

#### **Corps of Engineers:**

Soon after the beginning of each year, the Corps shall conduct an annual review of all projects authorized during the previous year. Pertinent information from these cases shall be compiled into a report and entered in the official GP file. Copies of this report shall be made available to the interested public, and to local, state and federal agencies for their information upon request.

In addition, periodic field inspections shall be undertaken by the Corps and/or a representative from the MOA Planning Department of projects authorized under the GP. Reports shall be prepared for all field inspections and entered into the official GP file. The Regulatory Division shall maintain a file of GP-related documents and monitoring efforts.

Information contained in the GP file shall provide the basis for the decision whether or not to revise or renew the GP. If it is determined that projects authorized by this GP result in greater than minimal



adverse environmental impacts, then the GP shall be modified, suspended, or revoked to prevent further impacts.

#### **LIMITS OF THE AUTHORIZATION**

- 1) This GP does not grant any property rights, either in real estate or material, or any exclusive privileges; and it does not authorize any injury to property, invasion of rights, or infringement of Federal, State, or local laws or regulations.
- 2) This GP does not authorize the interference with any existing or proposed federal projects.
- 3) This authorization does not obviate the need for other Federal, State, and local permits, licenses, or approvals that may be required for the proposed work.

#### **LIMITS OF FEDERAL LIABILITY**

In issuing this GP, the Federal Government does not assume any liability for the following:

- 1) Damages to the permitted project or uses thereof as a result of other permitted or non-permitted activities or from natural causes.
- 2) Damages to the permitted project or uses thereof as a result of current or future activities undertaken by or on behalf of the United States which are not contrary to the public interest.
- 3) Damages to persons, property, or to other permitted or nonpermitted activities or structures caused by an activity authorized by this GP.
- 4) Design or construction deficiencies associated with the permitted work.
- 5) Damage claims associated with any future modification, suspension, or revocation of this permit.

#### **REEVALUATION OF PERMIT DECISION**

The Corps may reevaluate its decision to issue these GPs authorization to any person or agency at any time the circumstances warrant. Circumstances that could require a reevaluation include, but are not limited to, the following:

- 1) The permittee fails to comply with the terms and conditions of this permit.
- 2) The information provided by the permittee in support of the application proves to have been false, incomplete, or inaccurate.
- 3) Significant new information surfaces which this office did not consider in reaching the original public interest decision.

Such a reevaluation may result in a determination that it is appropriate to use the suspension, modification, and revocation procedures contained in 33 CFR 325.7 or enforcement procedures such as those contained in 33 CF 326.4 and 326.5. The referenced enforcement procedures provide for terms and conditions of your permit and for the initiation of legal action where appropriate. You will be required to pay for any corrective measures ordered by the Corps, and if you fail to comply with such directive, this office may in certain situations (such as those specified in 33 CFR 209.170) accomplish, the corrective measures by contract or otherwise and bill you for the cost.

#### **PENALTIES FOR NONCOMPLIANCE/VIOLATIONS**

Failure to comply with the terms and conditions of this GP may result in suspension of the work, revocation of the permit, removal of fill material or other structure, restoration of areas subject to Corps jurisdiction, and/or impositions of penalties as provided by law. The discharge of fill material not in accordance with the terms and conditions of this GP constitutes a violation of Section 301 of the Clean Water Act (33 U.S.C. 1319), and upon conviction thereof is punishable, in accordance with Section 309 of the Clean Water Act, by a fine of not less than \$2,500, nor more than \$25,000, per day of violation, or



imprisonment of not more than one year, or both. That individual is also subject to a civil penalty not to exceed \$25,000 per day of the violation.

**TERM**

These GPs are effective for five years from the date of reissuance unless otherwise modified, suspended, or revoked. Authorized work must be completed within twelve months after the expiration date of these GPs or after revocation of these GPs as specified in 33 CFR 330.12. Activities completed under the authorization of the GPs prior to expiration or revocation will continue to be authorized by that GP.

DRAFT



**List of Attachments to 2015 General Permits (GPs)**

Attachment A: Eligible Wetlands with Site Restrictions

Attachment B: Maps of Eligible Wetlands

Attachment C: Compensatory Mitigation receipt form

DRAFT



## Attachment A

ANCHORAGE BOWL								
Wetland Unit	Map #	Site Description/Location	Eligible for GPs	Not Eligible for GPs	Site Restriction			
					Setback		Buffer	
					Width	From	Width	From
1	1	SE Terminal/Roger Graves	x					
U-4A	1, 2	Between Whitney Rd and Hollywood	x		65'	unnamed stream		
5	11	NE Mountain View/Glenn	x					
6	13	SW Turpin/Glenn	x					
	14	Turpin Park, SE Oklahoma/Peck	x					
7	12, 23	Russian Jack Park, Both Sides of DeBarr Rd.	x		25'	drainageways		
10	36	NW 32nd/Pussywillow	x		65'	pond in south end	15'	"B" wetlands
					25'	drainageways		
10A	36	Muldoon Road: E. 36th to Pioneer Dr.	x					
	36	Chugach Foothills Park, South of Sycamore Loop	x					
11	25	Susitna Elementary School Pond	x					
		SW Muldoon/Ptarmigan	x					
		NW Muldoon/Northern Lights: West of Carrs	x					
12	36	Muldoon Park, SW Northern Lights/Muldoon	x		25'	drainageways		
13	35	SW Northern Lights/Patterson	x					
14A	24	SW Intersection Patterson/Sherwood		x				
16	35	East of Image Dr, between Keyann and Ridgelake	x					
17	23	NW Northern Lights/Pine ROW	x				15'	"B" wetlands
17A	23	North of Northern Lights, Both Sides of Wesleyan	x					
18	22, 23, 33	South of Northern Lts/Bragaw (Goose Lake vicinity)	partially	Map 22: south 500' of wetlands	65'	Goose Lake Outlet	25'	"A" wetlands
					25'	drainageways	15'	"B" wetlands
	23	SW Northern Lights/Pine ROW	x					
18A	33	South of Mosquito Lake, Between Bike Trail & Providence Dr.	x		65'	Mosquito Lake	25'	"A" wetlands
		NW University/Veco (SE of Mosquito Lake)	x					
18D	33	NW UAA Dr./Scoter	x				25'	"A" wetlands



## Attachment A

ANCHORAGE BOWL								
Wetland Unit	Map #	Site Description/Location	Eligible for GPs	Not Eligible for GPs	Site Restriction			
					Setback		Buffer	
					Width	From	Width	From
19	22	NW Northern Lights/Bragaw (4 sites)	x		100'	Middle Fork Chester Creek (north site)		
21B	21	SW 15th/Lake Otis	x		65'	North Fork Chester Creek		
22	20	NW Chester Creek/C	x		100'	Chester Creek		
		North of Chester Creek, Between C St. & A St.	x		100'	Chester Creek		
25	29	Along 32nd, West of Wisconsin (multiple sites)	x					
		NW Corner, Lake Hood Elementary	x					
		NW 40th/Wisconsin	x					
		SW 40th/Andree	x					25'
		SW 40th/Beechcraft	x				15'	"B" wetlands
24	29	Woodland Park: 34th to 36th Ave.	x					
U-26A	16	SW of Point Woronzof and Postmark Dr	x					
26A	17	South of Northern Lights, outlet of Turnagain Bog (2 sites)	x		65'	Turnagain Bog outlet		
	27	NE Postmark/Sikorsky	x				25'	"A"
	28	Turnagain Bog Proper, Snow Dump to Aircraft Dr (6 sites)	x				15'	"B" wetlands
26B	28	South End, East Turnagain Bog: Lakeshore Drive and 43rd	x				15'	"B" wetlands
26C	16, 17	NE Northern Lights/Postmark	x					
	17	East of Earthquake Park	x		65'	pond west of Chilligan	25'	"A" wetlands
27	26	At Coastal Trail, South of Point Woronzof (2 sites)	x		25'	drainageways		
29A	52	NW Raspberry/Air Guard	x					



## Attachment A

ANCHORAGE BOWL								
Wetland Unit	Map #	Site Description/Location	Eligible for GPs	Not Eligible for GPs	Site Restriction			
					Setback		Buffer	
					Width	From	Width	From
30	52	West of DeLong Lake & East of Air Guard Dr		x				
		SE DeLong Lake/Jewel Lake	x					
31A	41	SW Intersection International/Northwood		x				
	42	NE intersection International/Northwood		x				
		NW International/Minnesota Off-ramp	x					
34A	42	SE International/Minnesota Off-ramp	x					
	54	Between Blueberry Lake & Interstate Cir.		x				
		NW Seafood/Ressel	x					
34C	54	SE Minnesota/Raspberry	x					
34E	53	SE Raspberry/Timothy	x					
		Between Northwood and Timothy Cir		x				
34F	67	NW Strawberry/Minnesota	x				15'	"B" wetlands
		SW Strawberry/80th	x					
		SE Strawberry/80th	x					
		South of Strawberry Rd. & West of Berry Patch		x				
35	53	East of Gladys Wood Elementary: West of Arlene, at 71st	x					
36	66	Hathor Subdivision, West of Northwood, at 83rd	partially	lots along north edge				
36A	66	Along Creek, 88th to Blackberry	x		65'	tributary to Campbell Lake		
37B	65	Victoria Park Subdiv, NW Intersection 80th/Charlotte		x				
37C	65	NW Intersection 82nd/Sue		x				
37E	52	Adjacent to Pond, NE Intersection 72nd/Bailey	x		65'	pond		
		NW 72nd/Setter	x					
		NW Caravelle/Hunter	x					
38A	44	West of New Seward & North of 50th		x				
		NE Intersection Old Seward/International		x				



## Attachment A

ANCHORAGE BOWL								
Wetland Unit	Map #	Site Description/Location	Eligible for GPs	Not Eligible for GPs	Site Restriction			
					Setback		Buffer	
					Width	From	Width	From
38A	44	NE International/Juneau	x		100'	Campbell Creek	25'	"A" wetlands
		NE New Seward/Alpenhorn	x				25'	"A" wetlands
38B	55	South of 64th & East of Hampstead		x				
		NW 72nd/Michelin	x					
38C	55	C St. ROW, Dowling to 76th		x				
		North of 64th, between B & C St.		x				
		North of 68th, East of Railroad	x					
		North of 68th, at Greenbelt	x				25'	"A" wetlands
		North of 70th & West of C St.		x				
		Between 68th & Railroad, at Greenbelt		x				
40	43	West Side, Business Park Blvd.	x				25'	"A" wetlands
40B	43	46th to International, C St. to Cordova	x					
41	31	36th to 40th, A St. to C St.	x					
		Cuddy Park	x		65'	pond		
		SW Intersection 40th/Denali		x				
		SW 40th/Fairbanks	x					
		NE Tudor/B St.	x					
		NE Tudor/Denali	x					
46	43	West of Old Seward, between 57th & Dowling	x					
	44	56th to Dowling, West of New Seward Hwy		x				
		North of Dowling, New Seward to Dow St.	x					
		North of Dowling, Petersburg to Lake Otis	x					
47	45	NE Lake Otis/52nd	x					
		SE Intersection Folker/52nd		x				
		South End, Tudor Dog Track	x				25'	"A" wetlands
		SW Intersection Bragaw/48th		x				
		North of Dowling, at Norm	x				25'	"A" wetlands
		SW Tudor/Elmore	x					
48B	48	SE Tudor/Muldoon Curve/Klutina	x					



## Attachment A

ANCHORAGE BOWL								
Wetland Unit	Map #	Site Description/Location	Eligible for GPs	Not Eligible for GPs	Site Restriction			
					Setback		Buffer	
					Width	From	Width	From
49West	46	SE Tudor/Bragaw	x				15'	"B" wetlands
49East	47	South of ADOT/PF Maintenance Facility	x					
50	17a	South of Midden Way	x					
51	57	Lake Otis to Tondi/Genny, 68th to 72nd	x		100'	N.F., L. Campbell Creek		
		SE 68th/Spruce	partially	Tract A, Crowberry Subdiv	100'	N.F., L. Campbell Creek		
		SW 68th/Elmore	x		100'	N.F., L. Campbell Creek		
		Lake Otis to Gray Wolf, 72nd to Lore	x		100'	N.F., L. Campbell Creek		
	70	South of Lore, Delridge to Snow View		x				
		Nadine Park, NE 80th/Snow View	x		100'	N.F., L. Campbell Creek		
		Mariah Subdivision, North of 80th at Snowview		x				
		North of 80th, Ladasa to Winchester	x		100'	N.F., L. Campbell Creek		
52	57	South of 68th, at Pebblebrook	x					
		Both Sides of 72nd, Travis to Abbott Loop	x					
		Tranquility/Randamar	x					
		West of Winchester, 72nd to 74th	x					
	70	SE Lake Otis/Lore	x					
		North of 80th, at Medellin	x					
		NW 80th/Abbott Loop	x					
		SE 80th/Sandy (2 sites)	x					
Both Sides of 84th, at Raintree	x							
53	57	South of Desiree Circle (remaining wetlands within setback)		x				



## Attachment A

ANCHORAGE BOWL								
Wetland Unit	Map #	Site Description/Location	Eligible for GPs	Not Eligible for GPs	Site Restriction			
					Setback		Buffer	
					Width	From	Width	From
54	56	SW Dowling/Laurel	x					
55	56	South of 63rd, at Lake Otis	x					
		O'Brien: 68th to 72nd	x					
56	56	SE 69th/Rosewood	x		100'	L. Campbell Ck		
		NE Intersection, 64th/Ashwood (remaining wetlands preserved under permit)		x				
		South of 64th at Burlwood	x		100'	N.F., L. Campbell Creek		
					100'	inactive creek channels		
		Eastwood Park, North of 68th at Meadow (remaining wetlands within setback)		x				
57	56	Seward Hwy to Meadow, 72nd to 74th	x					
		Meadow to Basel, 72nd to 74th	x					
58	69	Sandlewood to Hartzell, Lore to 82nd (ponded areas excluded)	x	x				
58B	69	SE Seward/Dimond	x		65'			
59	68	87th to 92nd, C St to King St		x				
		East of King Street, Dimond to 92nd	x					
	77	West of Gambell, 92nd to 94th	x					
60	67	West of Minnesota, Dimond to 92nd	x					
	76	NW Minnesota/100th	x					
	77	NE C St/O'Malley	x					
		NE Intersection, C St/104th (Target store pond: wetlands preserved under permit)		x				
60C	78	NW Seward/O'Malley	x					
61	74	Resolution Pointe Subdivision, North End of Chiniak Bay Dr	x		25'	drainageways		
62	83	Tract G-2A, Between Bayshore Lake & Bayshore Dr (preserved under permit)		x				



Attachment A

ANCHORAGE BOWL									
Wetland Unit	Map #	Site Description/Location	Eligible for GPs	Not Eligible for GPs	Site Restriction				
					Setback		Buffer		
					Width	From	Width	From	
62	83	Discovery Heights Subdivision	x		25'	top of bluff above Bayshore Creek	25'	"A" wetlands	
63	75	NE Southport/Washington							
		NW Ensign/Halfhitch	x						
		NW Ensign/Southport	x						
	83	South of Ensign, Ketch to Cutter (Tract A-2 preserved under permit)	x	x				15'	"B" wetlands
		Tract G-2B, Between Bayshore Dr & Southport Dr (preserved under permit)			x				
		South of Bellvue Loop	x						
64	84	SE Old Klatt/Juniper	x						
		Timberlane Park Area	x		25'	drainageways, esp. at west end			
	92	SE Johns/Huffman	x						
67	78	North of O'Malley & West of Independence Dr (2 sites; remaining wetlands ponded &/or have direct connection to creek)						x	
		North of O'Malley & East of Independence Dr (remaining wetlands within setback)						x	
		West of Vanguard	x						
68	70	NE Intersection, Abbott/Lake Otis (remaining wetlands preserved under permit)						x	
		West of Spruce, 84th to Abbott (remaining wetlands within setback)						x	
		East of Spruce, 84th to Abbott	x						
70	80	Abbott:Elmore to Springhill, 98th to 104th						x	
72A	89	North of Moose Dr.	x		25'	drainageways			
		Along Creek, West of Rockridge Dr	x		100'	S.F., L. Campbell Creek	25'	"A" wetlands	
					85'	springs			



## Attachment A

ANCHORAGE BOWL								
Wetland Unit	Map #	Site Description/Location	Eligible for GPs	Not Eligible for GPs	Site Restriction			
					Setback		Buffer	
					Width	From	Width	From
72A	89	Along Creek, Lake-o-the-Hills to Rockridge Dr	x		100'	L. Campbell Ck and tribs		
					85'	springs		
					25'	drainageways		
72B	90	Lake-o-the-Hills Cir to Alatna (wetlands within setback)	x		100'	L. Campbell Ck trib		
					25'	drainageways		
		Moose Road: NE Birch/Huffman ROW	x					
72C	89	Along 115th, Cobra to Trails End	x		85'	Craig Ck		
72F	88	South of O'Malley, Birch to Baronik	x		100'	S.F., L. Campbell Creek		
	89	South of O'Malley, Rock Ridge to Birch	x		100'	S.F., L. Campbell Creek	25'	"A" wetlands
U-73	96	North of Beverly between entries of Alpine Dr	x		25'	drainageways		
U-73	96	SW Crestview & Kalgin	x		25'	drainageways		
U-73	96	Between Mountain Place and Alpine Dr (North of DeArmoun)	x		25'	drainageways		
73	89	SW Downey Finch/Waxwing (2 sites)	x					
	96	North of DeArmoun, Between Alpine & Floral (wetlands entirely within setback)		x				
74	87	North of Huffman, Wagner to Cange (2 sites)	x		65'	N.F. Furrow Ck		
		North of Huffman, Cange to Jerome	x		65'	N.F. Furrow Ck		
75	86	NW Huffman/Silver Spruce, Along Creek	x		65'	N.F. Furrow Ck		
					65'	springs		
	87	NE Lake Otis/Huffman	x		25'	drainageways		



Attachment A

ANCHORAGE BOWL								
Wetland Unit	Map #	Site Description/Location	Eligible for GPs	Not Eligible for GPs	Site Restriction			
					Setback		Buffer	
					Width	From	Width	From
75	87	North of Huffman, Woodway to Gander	x		65'	N.F. Furrow Ck		
77	94	East of Lake Otis, Merganser to Flyway	x					
78	100	Loc Loman to Sanderlin, North of Creek	x					
	101	SE Elmore/Manytell	x		25'	drainageways		
		South of 147th & East of Teton (impoundment of Elmore Creek; entirely encompassed by prev setback)		x				
79A	101	East of Buffalo St, 142nd to 144th	x		25'	drainageways		
80	102	NW Andover/Northfield	x		85'	tributary of Elmore Ck		
82	102,103	NE of Bear Valley school, Including 149th & Hillside ROWs	x		25'	drainageways	25'	"A" wetlands
							15'	"B" wetlands
85	102	NE Goldenview/156th	x		85'	trib to Little Rabbit Ck		
U-83	108	North of Paine, between Kings Way Dr & Robert Dr	x		100'	L. Rabbit Ck & trib to L. Rabbit		
83		SW Jamie/Carl	x		25'	drainageways		
		Jamie to Francesca, Carl to Nickleen	x		100'	trib to L. Rabbit Ck		
					25'	drainageways		
		SW Francesca/Nickleen	x		100'	S.F. Little Rabbit Ck		
					25'	drainageways		
		Jamie to Cinerama, Nickleen to east of Kings Way	x		100'	N.F. Little Rabbit Ck		
					100'	trib to Little Rabbit Ck		
					25'	drainageways		
SE Francesca/Nickleen		x		100'	S.F. Little Rabbit Ck			
	25'			drainageways				



## Attachment A

ANCHORAGE BOWL								
Wetland Unit	Map #	Site Description/Location	Eligible for GPs	Not Eligible for GPs	Site Restriction			
					Setback		Buffer	
					Width	From	Width	From
83	108	Genevieve to Kings Way	x		100'	S.F. Little Rabbit Ck		
					25'	drainageways		
84	107	Shangrilla East, Views of Prominence Subdivisions	x		85'	trib to L. Rabbit Ck		
	108	NW Carl/Diane	x		25'	drainageways		
		NW Carl /Marino	x		25'	drainageways		
		West of Carl, Marino to Byron	x		25'	drainageways		
		NE Carl/Diane	x		100'	S.F. Little Rabbit Ck		
					25'	drainageways		
SE Carl/Diane	x		25'	drainageways				
U-84-1	108	Between Denise Cir & Byron (East of Nickleen)	x		100'	L. Rabbit Ck		
U-84-2	108	Between Robert and Byron, between Carl and Nickleen	x					
84A	112, 29A	Kings Way ROW, South of Paine Rd.	x		100'	L. Rabbit Ck		
U-85	102	NE of Goldenview & 156th	x		25'	drainageways		
85	106	SE 162nd/St. James	x		25'	drainageways		
		SW 162nd/St. James	x		85'	trib to Little Rabbit Ck		
					25'	drainageways		
85A	106	West of Fedosia, at Belarde	x		65'	ephemeral pond in south end		
					65'	trib to L. Survival Ck		
					25'	drainageways		
86	110	Legacy Pointe Subdivision	x		85'	tributaries		

## Attachment A

EAGLE RIVER TO EKLUTNA								
Wetland Unit	Map #	Site Description/Location	Eligible for GPs	Not Eligible for	Site Restriction			
					Setback		Buffer	
					Width	From	Width	From
102	13	SE Thunderbird Creek/Eklutna River	x		65'	waterways		
103	12	NW Thunderbird/Sandpiper	x		25'	drainageways		
		Thunderbird/Teal	x		65'	trib to Thunderbird Ck		
		SW Thunderbird/Sandpiper	x		65'	creek		
104	16, 17	Glenn Hwy to Paradis Ln	x		65'	creek		
	12, 16	NE Paradis/Whalen	x		65'	creek		
106	18, 19	North of Rankin Road	x					
107	17	Edmonds Lake Park, West of Glenn Hwy (2 sites)	x					
		Between New & Old Glenn, South of Edmonds Lake Exit	x					
109	25, 26	North of Mirror Lake Dr	x		65'	Mirror Lake		
					65'	flow btween Lots 22 & 23		
		South of Mirror Lake Dr	x		25'	drainageways		
109A	26	East of Bear Mountain View Circle	x		65'	seasonal pond		
					25'	drainageways		
112	27	North of Sierra Mesa Cir	x					
		Inside Sierra Mesa Cir	x		85'	trib to Peters Ck		
		East of Sierra Mesa Cir	x		85'	trib to Peters Ck		
113	25	NE Mirror/Songbird	x					
		South of Mirror Dr	x					
114	24	West of Sambar Lp, at Deer Park Dr	x					
		NE Deer Park /Oberg, along the ravine		x				
	24, 25	Along Ravine, Oberg to Whispering Birch		x				
	18, 25	Along Ravine, Above Whispering Birch		x				
	18	NW Sampson/Reese (3 sites west of AWWU waterline)	x					
117	30, 36	NE of Mink Lake	x		200'	Mink Lake	25'	"A" wetlands
117a	35	SW Birchwood/Beverly	x					
118	39	NW Old Glenn/Parks Creek	x		100'	Parks Ck		
119	37	East of Old Glenn Hwy, Amonson to Skyview (Muni property)	x					
120	37	CBA Park, NE of Old Glenn Hwy at Amonson	x					



## Attachment A

EAGLE RIVER TO EKLUTNA								
Wetland Unit	Map #	Site Description/Location	Eligible for GPs	Not Eligible for	Site Restriction			
					Setback		Buffer	
					Width	From	Width	From
120	40	Glenn Hwy to Old Glenn, North of Parks Creek (3 sites)	x		100'	Parks Ck	25'	"A" wetlands
121	35, 40	NW Beach Lake Rd and Birchwood Lp Rd (along Parks Creek)	x		100'	Parks Ck		
	41	South of Beach Lake Road, Railroad to Birchwood Lp (5 sites)	x		100'	Parks Ck		
	40	NE Intersection, Birchwood Lp/Beach Lake Rd	x		100'	Parks Ck		
					25'	drainageways		
		North of Chugiak High School to Parks Creek	x		100'	Parks Ck		
		25'	drainageways					
		K&R St at Were St.	x		65'	trib to Peters Ck	25'	"A" wetlands
125	46	West of Cline, Hillcrest to Pioneer	x		25'	drainageways		
125	46	Cline to Glenn Hwy & Pioneer to Patches	x		100'	ephemeral pond in north end		
		NW Terrace/James	x					
126	47	NE Glenn/South Birchwood	x					
127	47	SW Old Glenn/Darby	x		85'	trib to Fire Lake		
130	49	Powder Ridge Subdiv: East Side of Fire Creek	x		100'	Fire Creek	25'	"A" wetlands
	49, 50	NW Glenn/Fire Creek	x		100'	Fire & Carol Creeks	25'	"A" wetlands
15'							"B" wetlands	
132	50, 51	West Powder Reserve, West of Powder Ridge Subdivisio	x					
133	50	Powder Ridge Subdiv & Powder Reserve: NE of Vasili/Eklutna Park Dr	x				25'	"A" wetlands
134	49	Along Fire Creek, Fire Lake to Glenn Hwy		x				
		South of Fire Eagle Condominiums	x		100'	Fire Creek		
136	53	West of Glenn Hwy, Opposite Breckenridge Dr	x		65'	Eagle River Loop Creek		
137	54	SE Schroeder/Iris	x					

## Attachment A

EAGLE RIVER TO EKLUTNA								
Wetland Unit	Map #	Site Description/Location	Eligible for GPs	Not Eligible for	Site Restriction			
					Setback		Buffer	
					Width	From	Width	From
138	54	Between Springbrook & Dee Ln	x		65'	Eagle River Loop Creek		
144	73	SE Eagle River Loop/Eagle River Bridge	x		65'	trib to Eagle River		
144A	62	East End, Eagle Pointe Subdiv & Greenbelt to North	x		100'	Eagle River		
145	72	NW Bernard/Bert	x		25'	drainageways		
		North of East Stonehill Drive	x		25'	drainageways		
146	63	Eagle Crossing Subdiv (3 sites)		x				
		Eagle River Greenbelt (3 sites)	x				25'	"A" wetlands



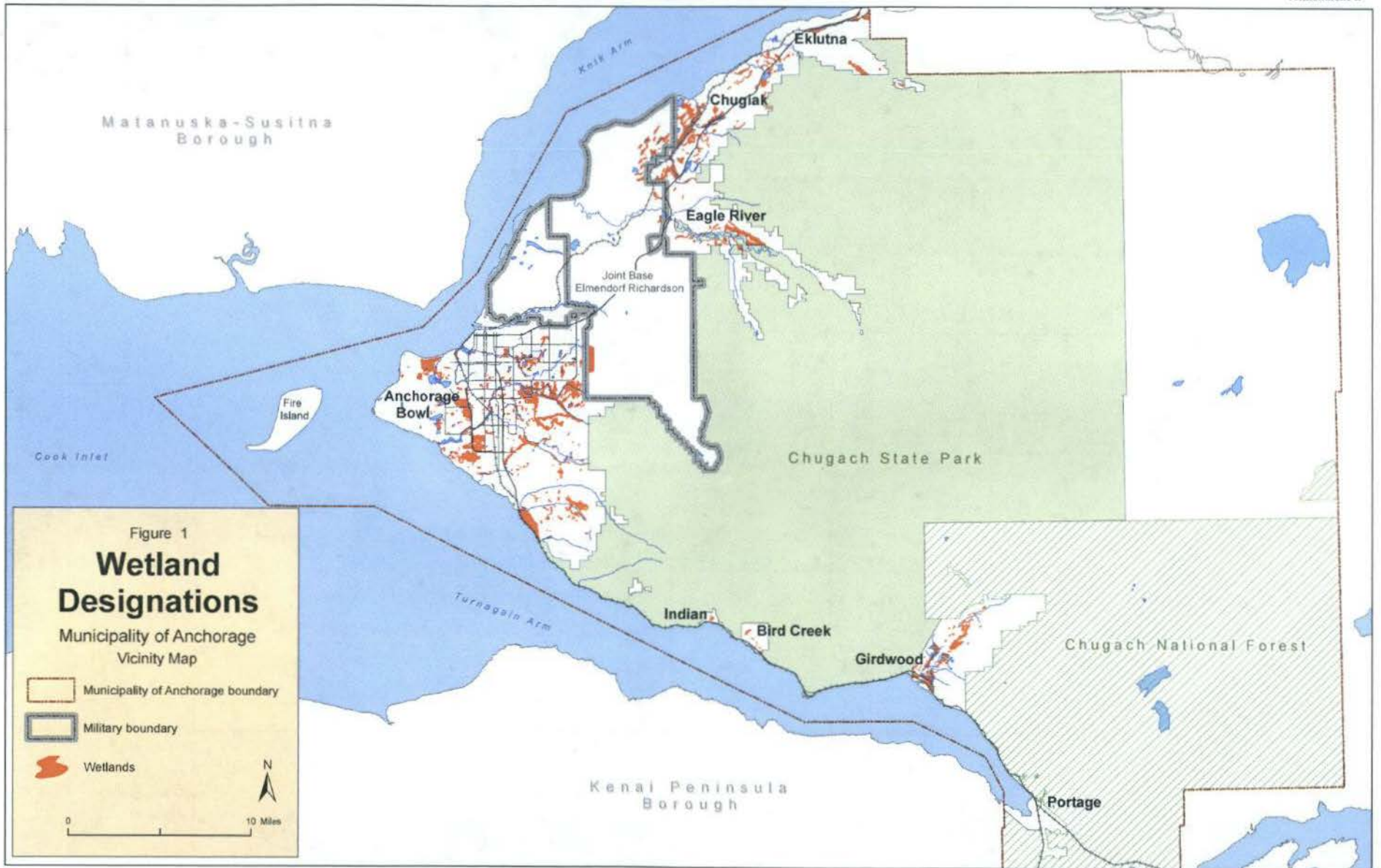
## Attachment A

TURNAGAIN ARM								
Wetland Unit	Map #	Site Description/Location	Eligible for GPs	Not Eligible for GPs	Site Restriction			
					Setback		Buffer	
					Width	From	Width	From
171	7	Bird Creek Regional Park, North of Seward Hwy. (4 sites)	x					
	8	Bird Creek, South Side of Hwy. Bird Creek, Along Railroad	x	x				
172	8	South of Bird Creek	x					
173	10	Bird Flats to Bird Point, North of Seward Hwy. (2 sites)	x					
	11, 12	Along Railroad, West of Bird Point	x					
180	42	Portage, East of Seward Hwy.	x		100'	Portage Ck & tribs		
202	25	West of Alyeska Hwy & South of Railroad	x				25'	"A" wetlands
203	25	Alyeska Hwy. to Main St.	x					
		Main Street to East St.	x					
208	23, 25	West of Alyeska Hwy: Railroad to north of Doran	x					
210	23	West of Alyeska Hwy., at Juniper	x					
212	22	West of Barren Ave.	x		100'	trib to Glacier Ck	25'	"A" wetlands
213	21, 22	Alyeska Hwy. to Alpina: Timberline to Barren Ave.	partially	patterned ground/ headwaters area, SE Alpine View Estates	85'	trib to Glacier Ck		
		West of Alta	x		TBD	trib to Glacier Ck	25'	"A" wetlands
		SW Timberline at Alta	x					
		NW Vail/Gstaad	x					
		NW Vail/Vail Cir	x					
		NW Vail/Alpine Meadows	x					
		SW Vail/Stowe	x			TBD	trib to Glacier Ck	
214	21	East of Vail, Between Kitzbuhel & Loveland	x					
		West of Alpine Meadows Ave: Donner to Cortina West of Alpine Meadows Ave: Cortina to Davos	x					

## Attachment A

TURNAGAIN ARM								
Wetland Unit	Map #	Site Description/Location	Eligible for GPs	Not Eligible for GPs	Site Restriction			
					Setback		Buffer	
					Width	From	Width	From
214	21	East of Alpine Meadows Ave: Cortina to Brighton	x					
218	19, 21	NW Aspen Mtn/Arlberg	x		85'	trib to Alyeska Ck		







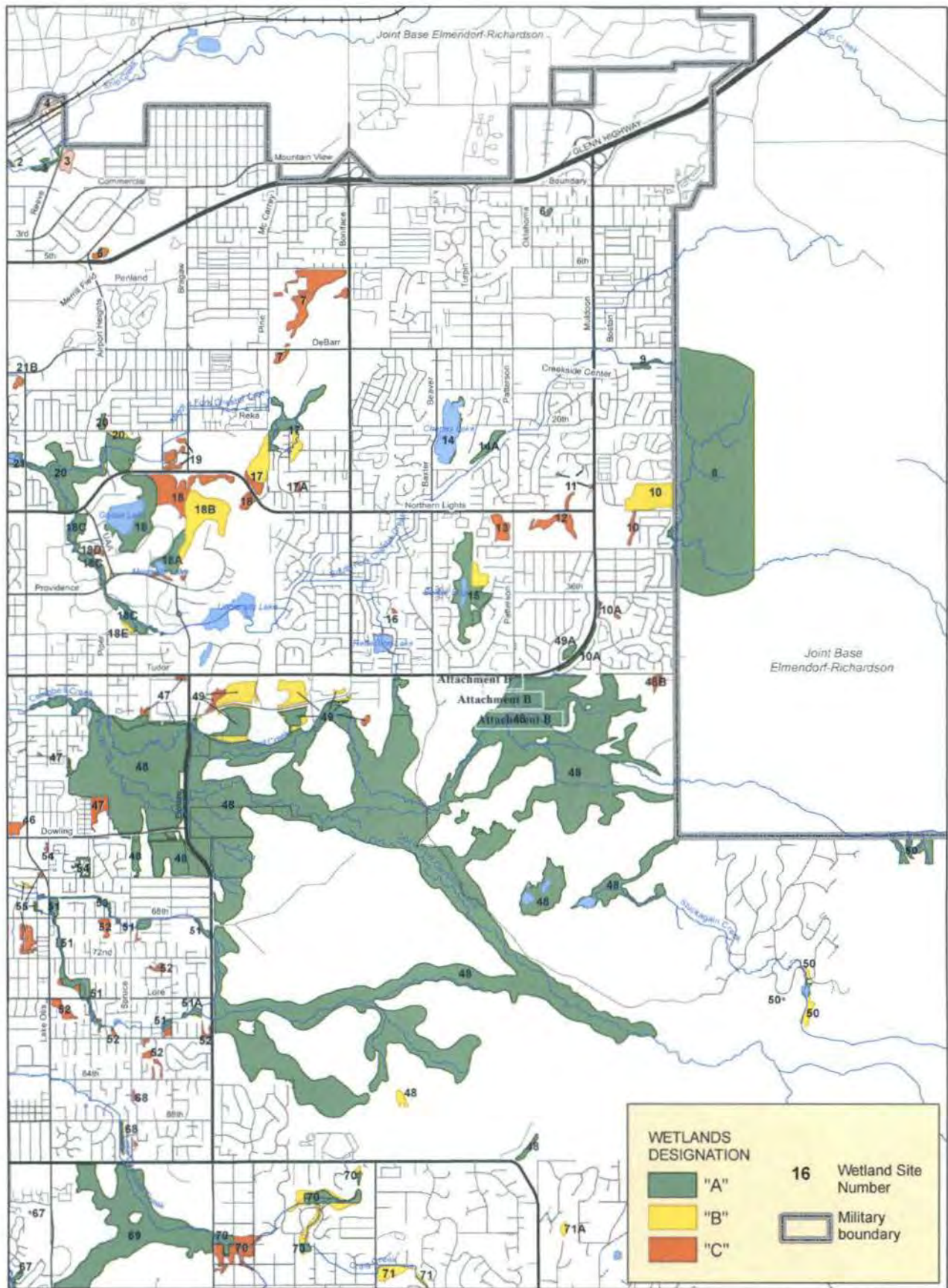


Figure 2

# Wetland Designations Anchorage Bowl - Northeast



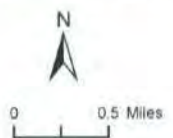
Note that wetland maps produced by the Municipality are not all inclusive. Wetland boundaries depicted on municipality produced maps are approximate. It is not possible to map all wetlands, especially on private property, without the ability to ground-truth suspected features. To obtain the most accurate information, it is incumbent on individual landowners to request a Jurisdictional Determination and/or wetland delineation from the Corps of Engineers or hire a professional wetland scientist to make a determination for submission to the Corps. MOA Long-Range Planning staff are responsible for maintaining wetland maps and datasets to service the Municipality of Anchorage. For the most accurate, up-to-date wetlands mapping information, contact the MOA Long-Range Planning Section staff at (907)343-7921. Stream data is approximate and shown as informational only. Inquiries regarding stream locations should be made to MOA Watershed Management Section at (907)343-8130. Revised July 9, 2014





Figure 3

# Wetland Designations Anchorage Bowl - Northwest



Note that wetland maps produced by the Municipality are not all inclusive. Wetland boundaries depicted on municipally produced maps are approximate. It is not possible to map all wetlands, especially on private property, without the ability to ground truth suspected features. To obtain the most accurate information, it is incumbent on individual landowners to request a Jurisdictional Determination and/or wetland delineation from the Corps of Engineers or hire a professional wetland scientist to make a determination for submission to the Corps. MOA Long-Range Planning staff are responsible for maintaining wetland maps and datasets to service the Municipality of Anchorage. For the most accurate, up-to-date wetlands mapping information, contact the MOA Long-Range Planning Section staff at (907)343-7921. Stream data is approximate and shown as informational only. Inquiries regarding stream locations should be made to MOA Watershed Management Section at (907)343-8135.  
Revised July 9, 2014



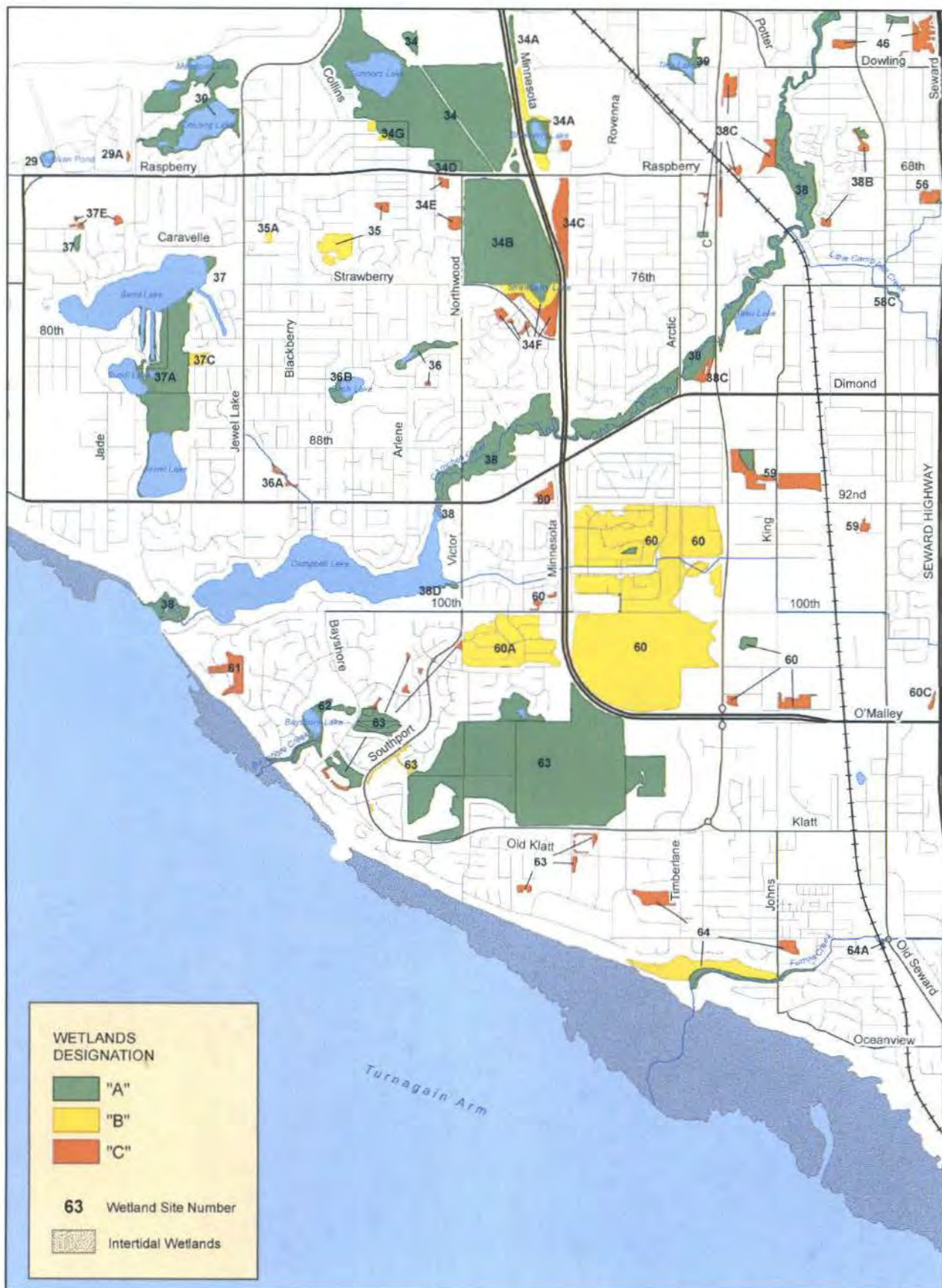


Figure 4

# Wetland Designations Anchorage Bowl - Southwest

Note that wetland maps produced by the Municipality are not all inclusive. Wetland boundaries depicted on municipally produced maps are approximate. It is not possible to map all wetlands, especially on private property without the ability to ground-truth suspected features. To obtain the most accurate information, it is incumbent on individual landowners to request a Jurisdictional Determination and/or wetland delineation from the Corps of Engineers or hire a professional wetland scientist to make a determination for submission to the Corps. MOA Long-Range Planning staff are responsible for maintaining wetland maps and datasets to service the Municipality of Anchorage. For the most accurate, up-to-date wetlands mapping information, contact the MOA Long-Range Planning Section staff at (907)343-7921. Stream data is approximate and shown as informational only. Inquiries regarding stream locations should be made to MOA Watershed Management Section at (907)343-8155.

Revised July 9, 2014



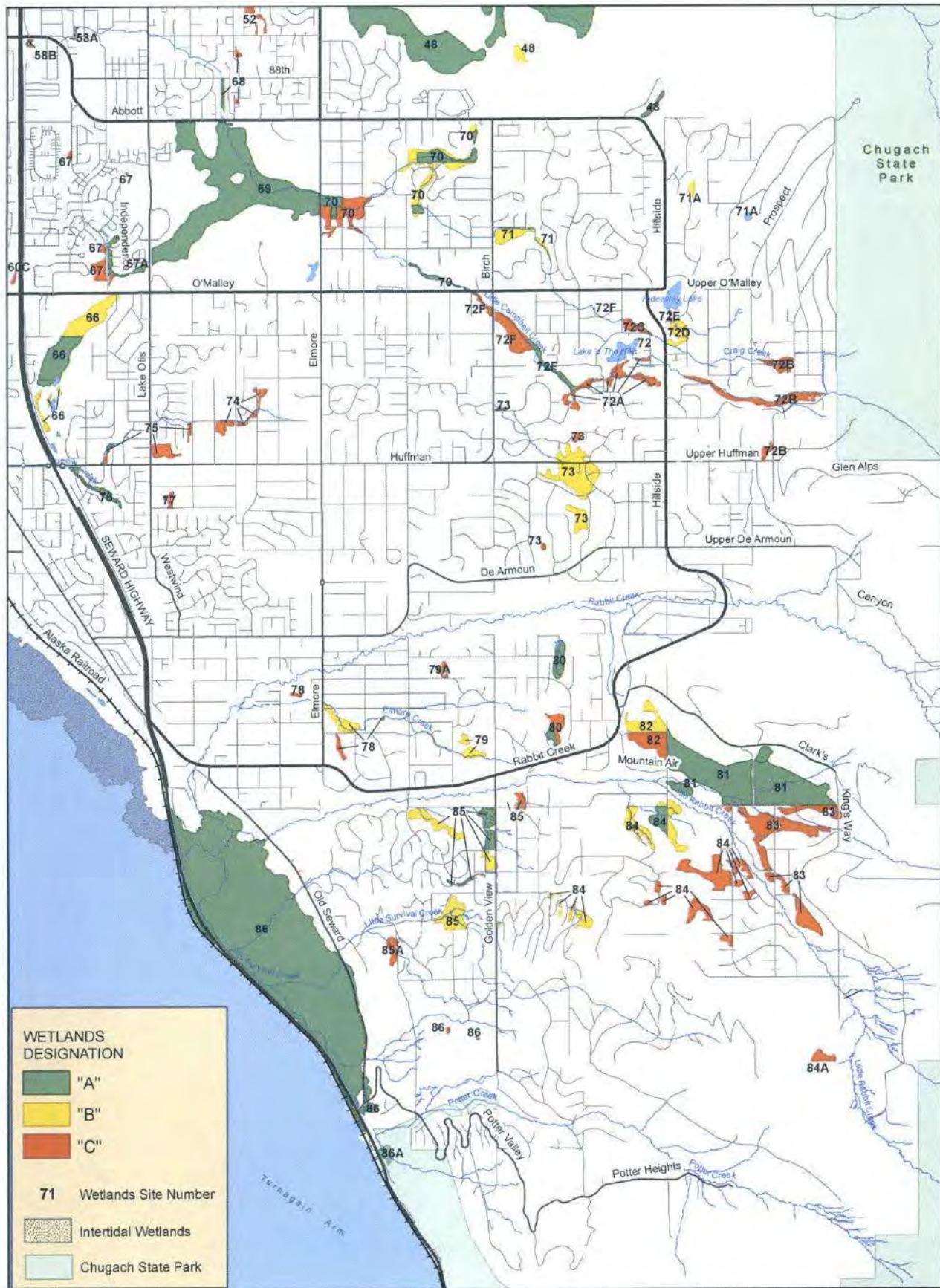


Figure 5

# Wetland Designations Anchorage Bowl - Southeast

Note that wetland maps produced by the Municipality are not all inclusive. Wetland boundaries depicted on municipally produced maps are approximate. It is not possible to map all wetlands, especially on private property, without the ability to ground-truth suspected features. To obtain the most accurate information, it is incumbent on individual landowners to request a Jurisdictional Determination and/or wetland delineation from the Corps of Engineers or hire a professional wetland scientist to make a determination for submission to the Corps. MOA Long-Range Planning staff are responsible for maintaining wetland maps and datasets to service the Municipality of Anchorage. For the most accurate, up-to-date wetlands mapping information, contact the MOA Long-Range Planning Section staff at (907)343-7921. Stream data is approximate and shown as informational only. Inquiries regarding stream locations should be made to MOA Watershed Management Section at (907)343-8158.

Revised July 9, 2014



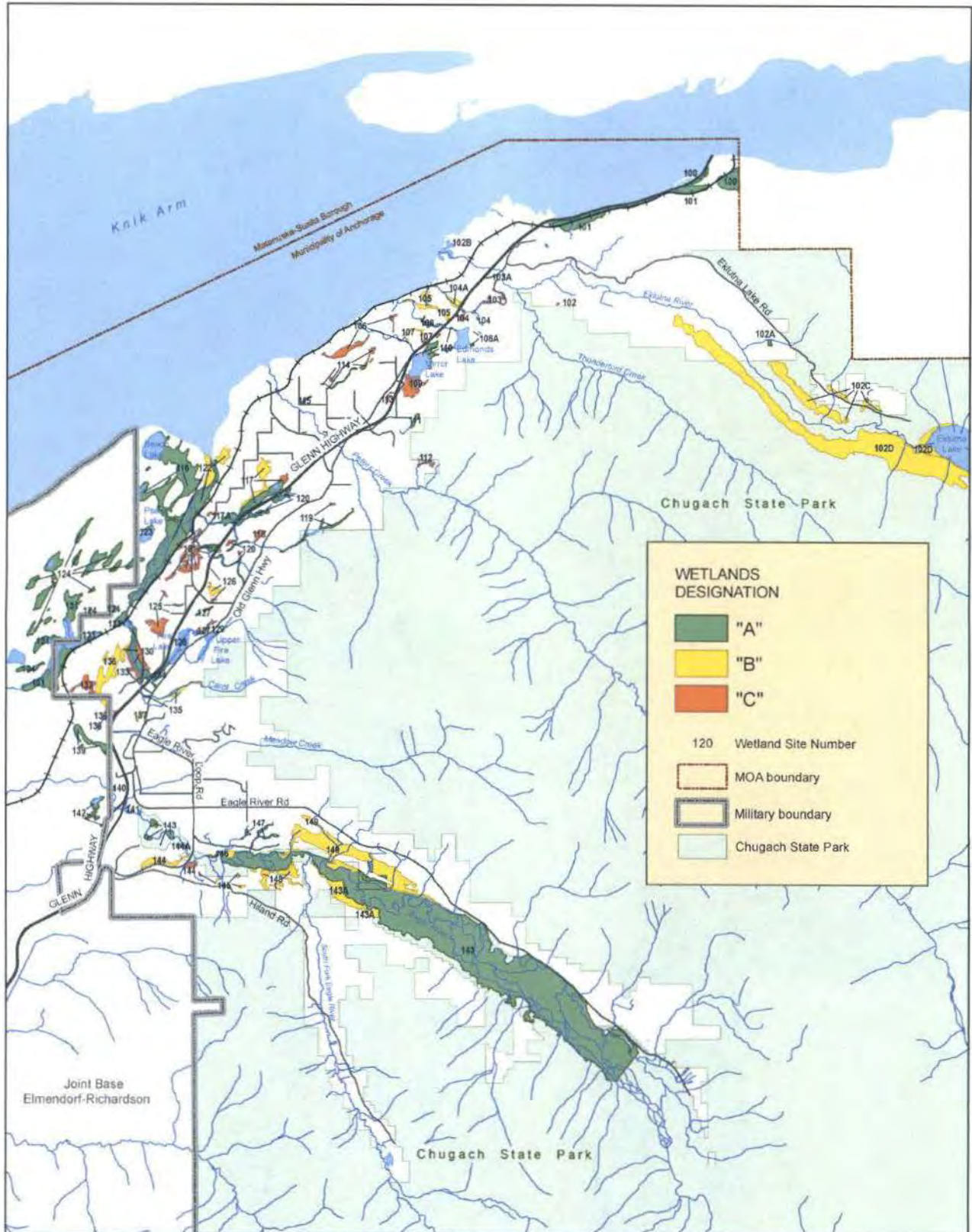


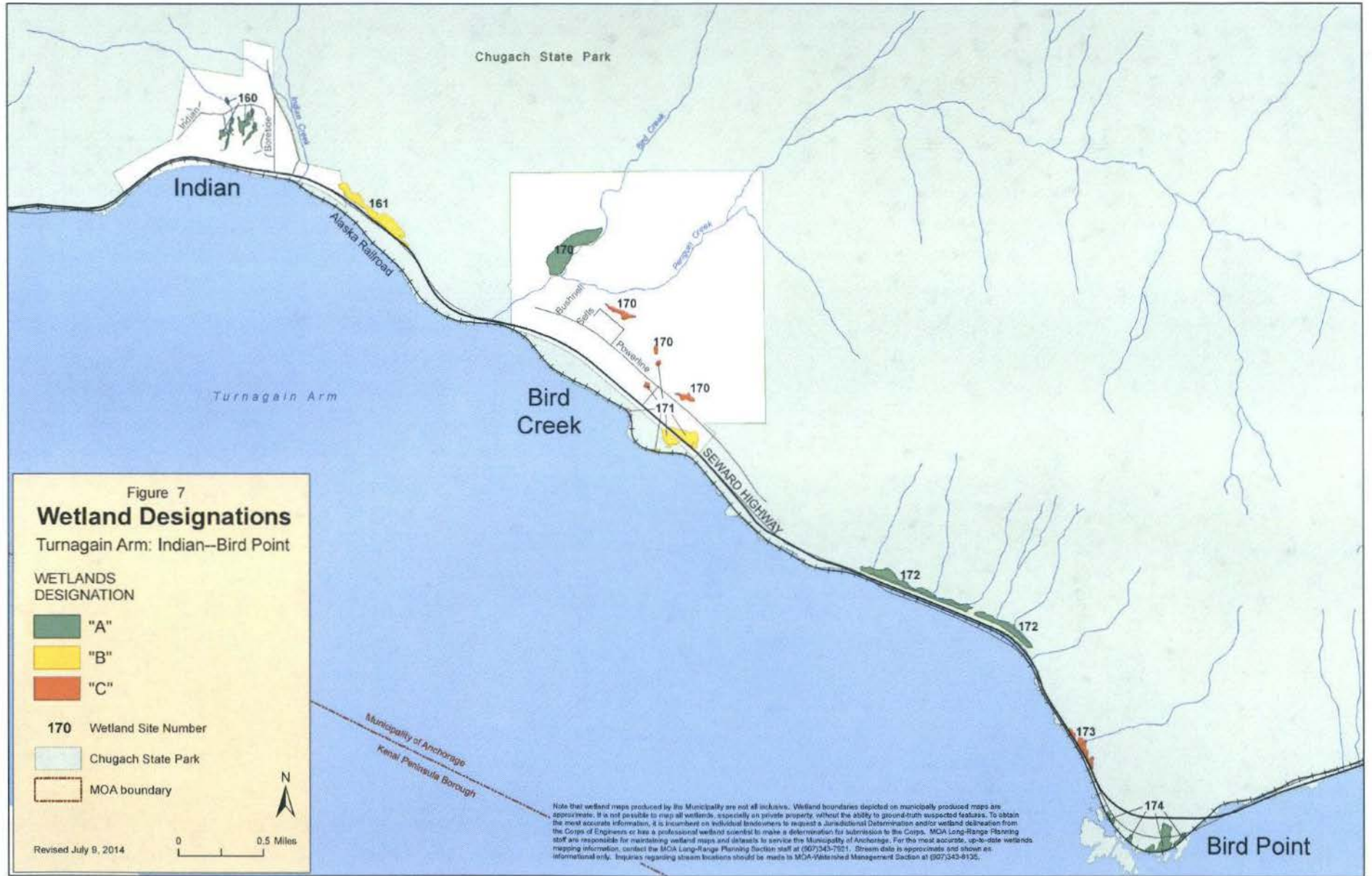
Figure 6

# Wetland Designations Eagle River to Eklutna



Notes that wetland maps produced by the Municipality are not all inclusive. Wetland boundaries depicted on municipally produced maps are approximate. It is not possible to map all wetlands, especially on private property, without the ability to ground-truth suspected features. To obtain the most accurate information, it is incumbent on individual landowners to request a Jurisdictional Determination and/or wetland delineation from the Corps of Engineers or hire a professional wetland scientist to make a determination for submission to the Corps. MOA Long-Range Planning staff are responsible for maintaining wetland maps and datasets to service the Municipality of Anchorage. For the most accurate, up-to-date wetlands mapping information, contact the MOA Long-Range Planning Section staff at (907)343-7921. Stream data is approximate and shown as informational only. Inquiries regarding stream locations should be made to MOA Watershed Management Section at (907)343-8135.







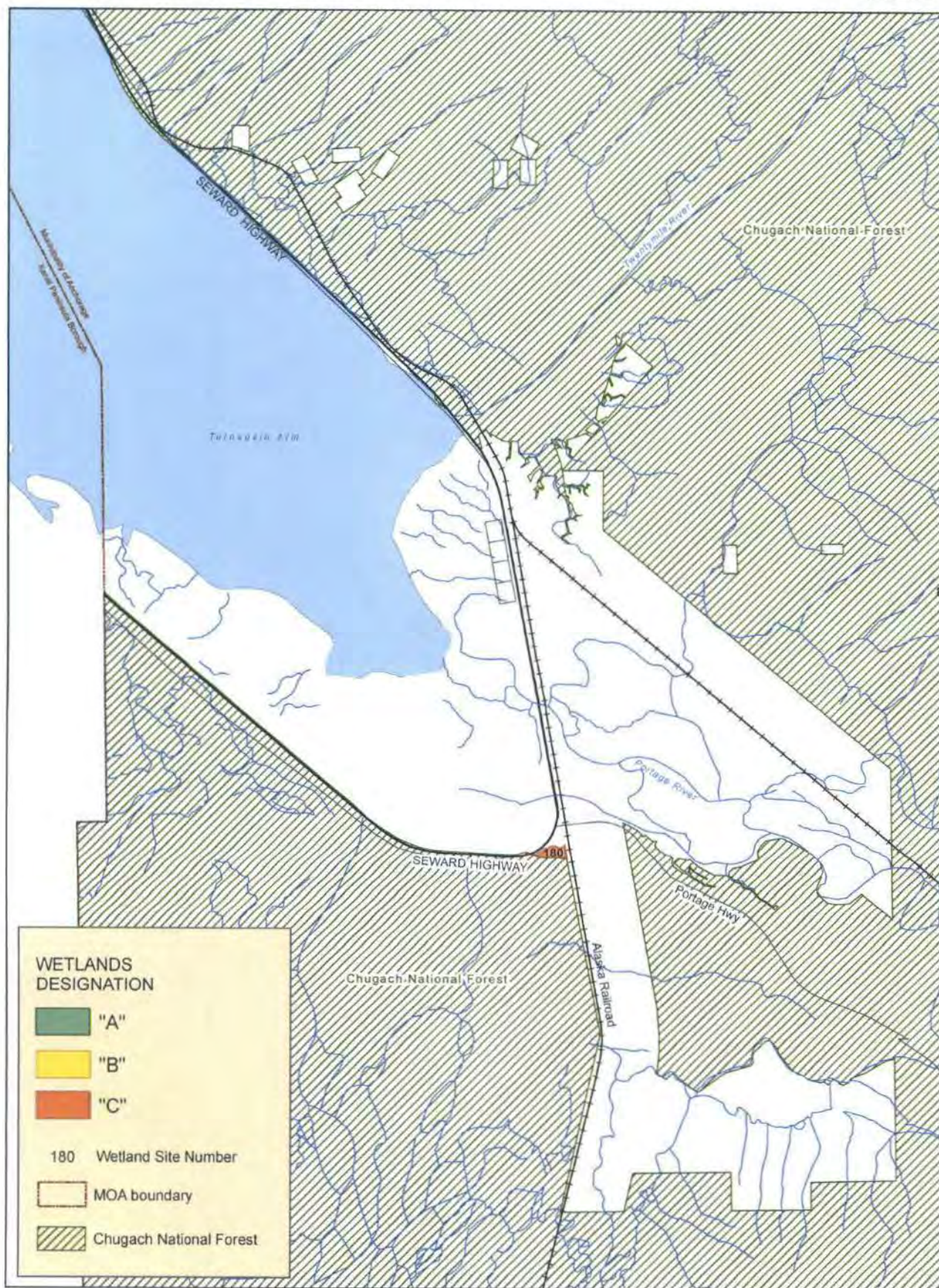
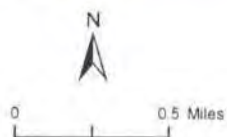


Figure 9

## Wetland Designations Turnagain Arm: Portage



Note that wetland maps produced by the Municipality are not all inclusive. Wetland boundaries depicted on municipally produced maps are approximations. It is not possible to map all wetlands, especially on private property, without the ability to ground-truth suspected features. To obtain the most accurate information, it is incumbent on individual landowners to request a Jurisdictional Determination and/or wetland delineation from the Corps of Engineers or hire a professional wetland scientist to make a determination for submission to the Corps. MOA Long-Range Planning staff are responsible for maintaining wetland maps and datasets to service the Municipality of Anchorage. For the most accurate, up-to-date wetlands mapping information, contact the MOA Long-Range Planning Section staff at (907)343-7921. Stream data is approximate and shown as informational only. Inquiries regarding stream locations should be made to MOA Watershed Management Section at (907)343-8135.

Revised July 9, 2014





US Army Corps  
of Engineers  
Alaska District

Attachment C

RECEIPT OF PAYMENT-CREDIT CALCULATION			
Compensatory Mitigation Type: Mitigation Bank ( ) In-Lieu-Fee Program ( )			
HUC:			
Permit No.:		Permittee:	
Project:		Credit Provider:	
Location:		Project Manager:	
Waterway:		Date:	
Cowardin Wetland Types			
System	Subsystem	Acreage Impacted	Credits
Palustrine			0.00
TOTAL CREDITS			0.00
VERIFICATION OF CREDITS SOLD BY:			

\_\_\_\_\_  
Name, Title

\_\_\_\_\_  
Date

\_\_\_\_\_  
Name, Title

\_\_\_\_\_  
Date