

## Directions

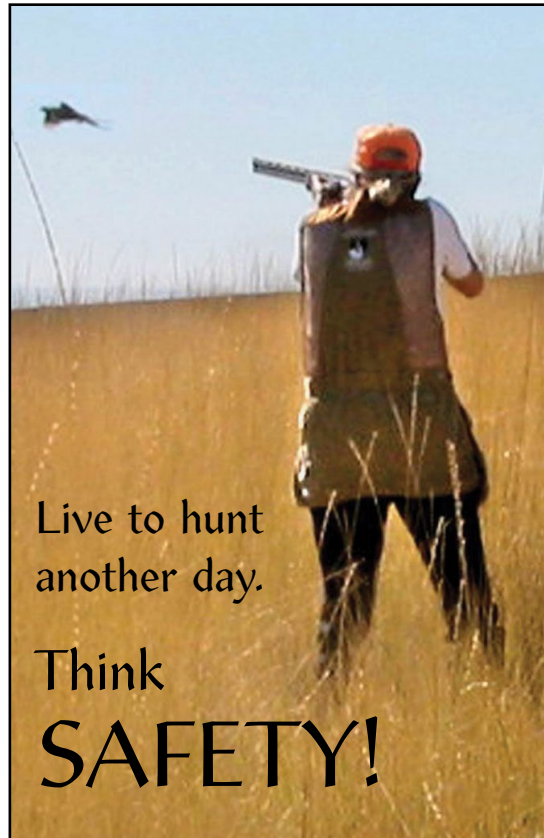
From the Southway Bridge in Lewiston, turn south onto Snake River Avenue and travel about 3 miles (becomes Tammany Creek Road). The parking area is on the west side of the road past the state park entrance. Located at Snake River Mile 145 on the east riverbank of Lower Granite Lake.

## Site Information

Approximately 600 acres, day-use area, fishing, hiking, biking, hunting, bird watching and wildlife viewing, limited equestrian trails. Camping is available nearby at Hells Gate State Park.

## Rules and Regulations

- Rules and regulations under Title 36 apply on all Corps lands
- All Idaho state hunting and fishing regulations are applicable
- Be aware that other visitors may be using hunting areas for different recreational activities
- Shotgun and archery hunting only
- Authorized vehicles only; no off-road, motorized vehicles
- Target, clay pigeon shooting and “plinking” are prohibited
- Pick up your litter when you leave ~ Pack It In, Pack It Out
- Open fires are prohibited
- Park in designated parking areas
- Camping is not allowed in parking areas or habitat management area
- Visitors are responsible for recognizing private land boundaries



Live to hunt  
another day.

Think  
**SAFETY!**

## Contact Information

Natural Resources Management Office  
Lower Granite Lock and Dam  
U.S. Army Corps of Engineers  
100 Fair Street  
Clarkston, WA 99403

**Phone:** 509-751-0240

**E-mail:** [corpsoutdoors@usace.army.mil](mailto:corpsoutdoors@usace.army.mil)

**Website:** [www.nww.usace.army.mil](http://www.nww.usace.army.mil)

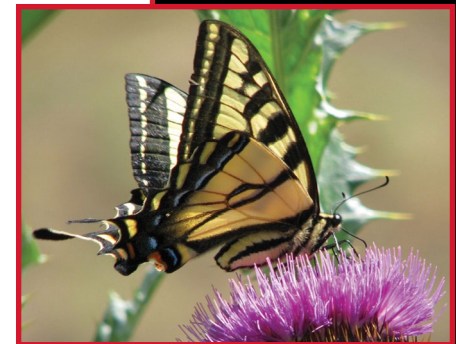
**Dam-crossing information:**

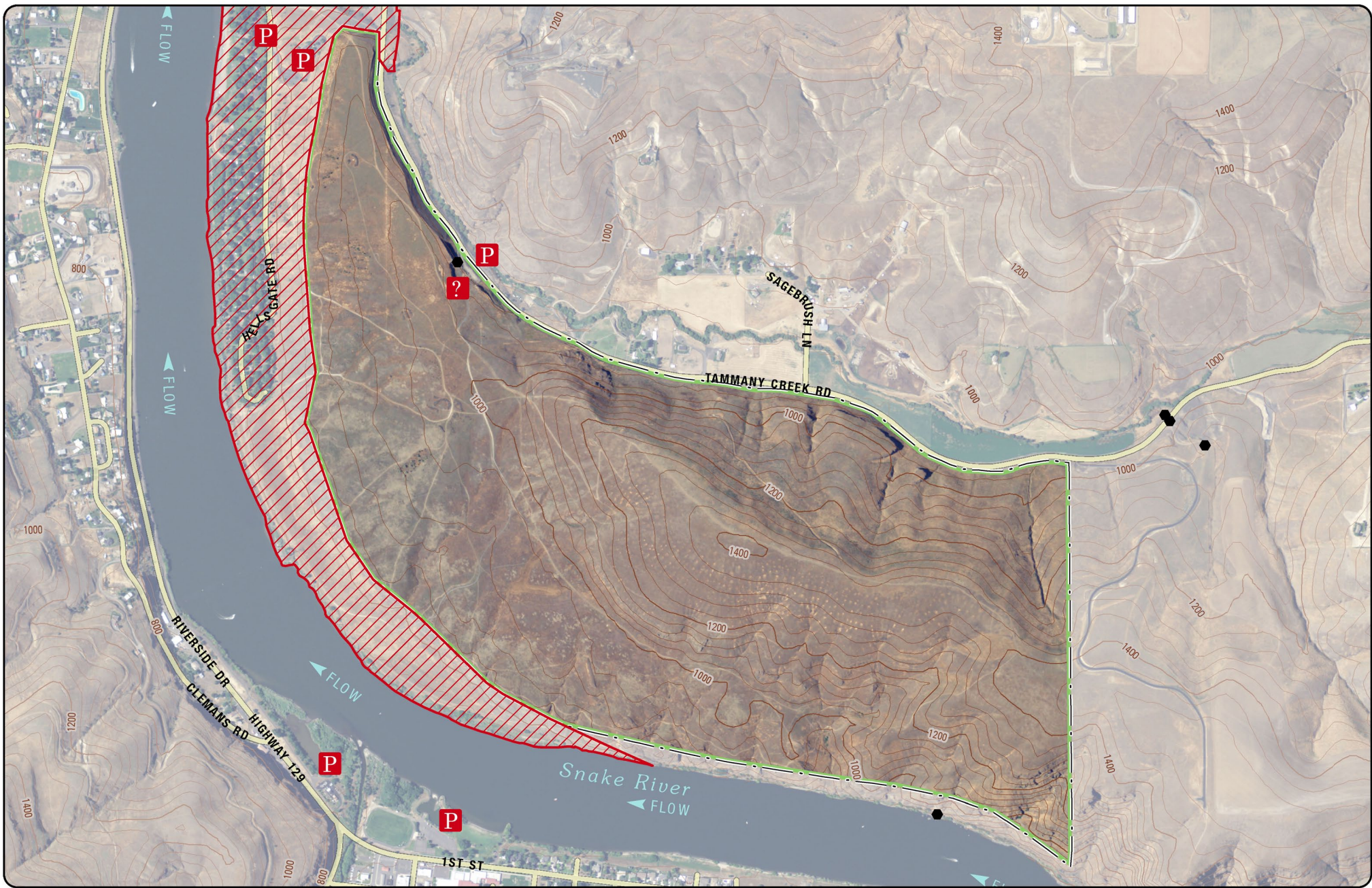
888-DAM-INFO (888-326-4636)

 [www.facebook.com/wallawallausace](https://www.facebook.com/wallawallausace)



**US Army Corps  
of Engineers®**

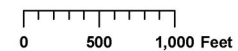




## Hells Gate Habitat Management Unit



- |      |         |            |                 |
|------|---------|------------|-----------------|
| Gate | Kiosk   | River Mile | HMU Boundary    |
| Dock | Parking | Restroom   | Restricted Area |



Lon: -117.04 Lat: 46.35

SHOTGUN AND ARCHERY ONLY