

### Direction (boat-access only)

Located at Snake River Mile 119 on the south riverbank of Lower Granite Lake. From Blyton Landing Boat Ramp (Whitman County): Boat upriver 0.5 miles.

### Site Information

Approximately 457 acres, fishing, hunting, bird watching and wildlife viewing. Blyton Landing has vault toilets, camping and boat ramp.

### Rules and Regulations

- Rules and regulations under Title 36 apply on all Corps lands
- All Washington state hunting and fishing regulations are applicable
- Be aware that other visitors may be using hunting areas for different recreational activities
- Authorized vehicles only; no off-road, motorized vehicles
- Target, clay pigeon shooting and “plinking” are prohibited
- Pick up your litter when you leave ~ Pack It In, Pack It Out
- Open fires are prohibited
- Camping is not allowed in habitat management area
- Visitors are responsible for recognizing private land boundaries



### Contact Information

Natural Resources Management Office  
Lower Granite Lock and Dam  
U.S. Army Corps of Engineers  
100 Fair Street  
Clarkston, WA 99403

**Phone:** 509-751-0240

**E-mail:** [corpsoutdoors@usace.army.mil](mailto:corpsoutdoors@usace.army.mil)

**Website:** [www.nww.usace.army.mil](http://www.nww.usace.army.mil)

**Dam-crossing information:**

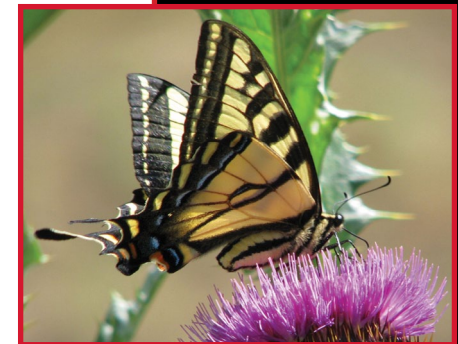
888-DAM-INFO (888-326-4636)

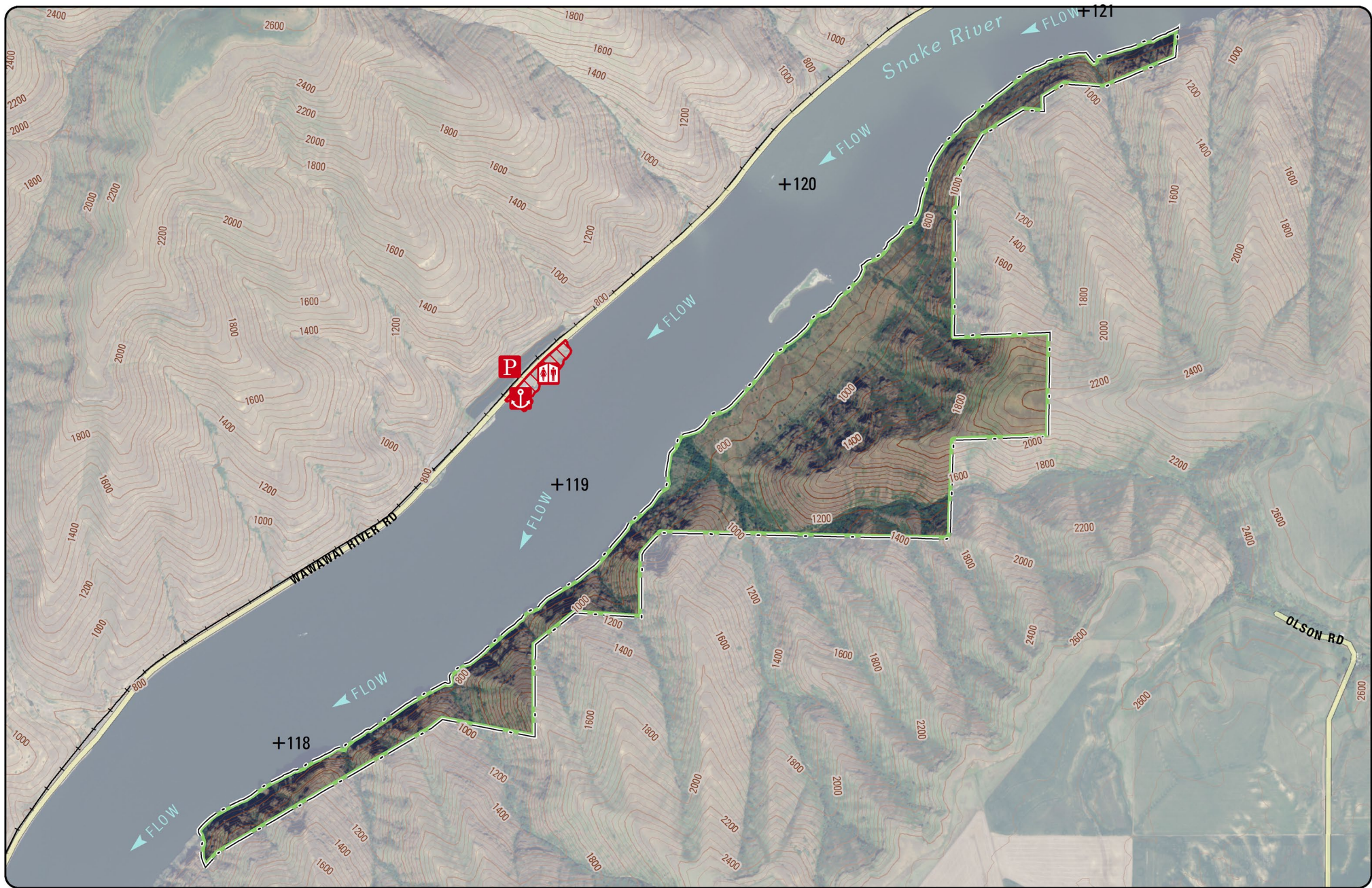


[www.facebook.com/wallawallausace](http://www.facebook.com/wallawallausace)



US Army Corps  
of Engineers®

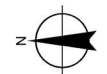
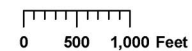




## Kelly Bar Habitat Management Unit



- |  |      |  |         |   |            |  |                 |
|--|------|--|---------|---|------------|--|-----------------|
|  | Gate |  | Kiosk   | + | River Mile |  | HMU Boundary    |
|  | Dock |  | Parking |   | Restroom   |  | Restricted Area |



Lon: -117.27 Lat: 46.55

**BOAT ACCESS ONLY**