

Directions

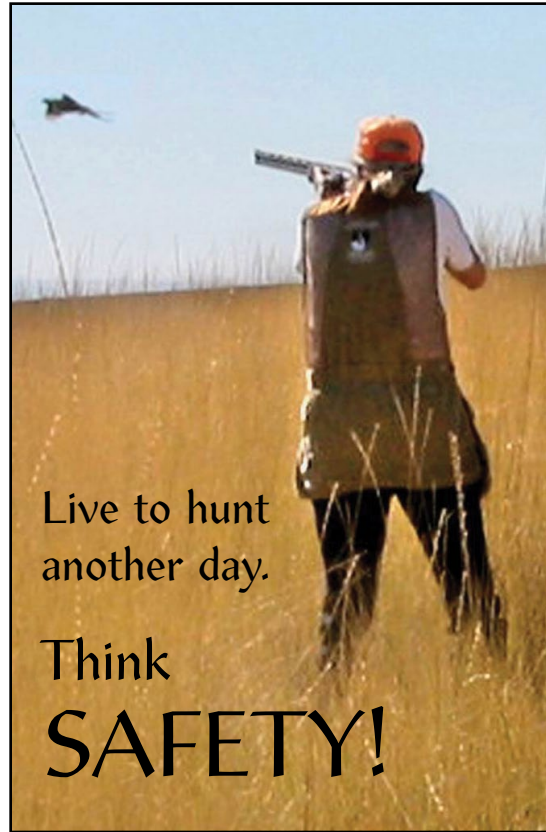
From U.S. Highway 12, turn north onto Ledgerwood Road for 2.3 miles. Veer north onto Kirby-Mayview Road for 12 miles. At the “T” with North Deadman Road, continue north on Kirby-Mayview Road for 5.4 miles. The road name changes to Casey Canyon Road for an additional 5.5 miles to the river. Located at Snake River Mile 102 on the south riverbank of Lake Bryan.

Site Information

Approximately 474 acres, day-use area, vault toilet, primitive boat ramps, fishing, hiking, swimming, hunting, bird watching and wildlife viewing.

Rules and Regulations

- Rules and regulations under Title 36 apply on all Corps lands
- All Washington state hunting and fishing regulations are applicable
- Be aware that other visitors may be using hunting areas for different recreational activities
- Shotgun and archery hunting only
- Authorized vehicles only; no off-road, motorized vehicles
- Target, clay pigeon shooting and “plinking” are prohibited
- Pick up your litter when you leave ~ Pack It In, Pack It Out
- Open fires are prohibited
- Park in designated parking areas
- Camping is not allowed in parking areas or habitat management area
- Visitors are responsible for recognizing private land boundaries



Live to hunt
another day.

Think
SAFETY!

Contact Information

Natural Resources Management Office
Lower Granite Lock and Dam
U.S. Army Corps of Engineers
100 Fair Street
Clarkston, WA 99403

Phone: 509-751-0240

E-mail: corpsoutdoors@usace.army.mil

Website: www.nww.usace.army.mil

Dam-crossing information:

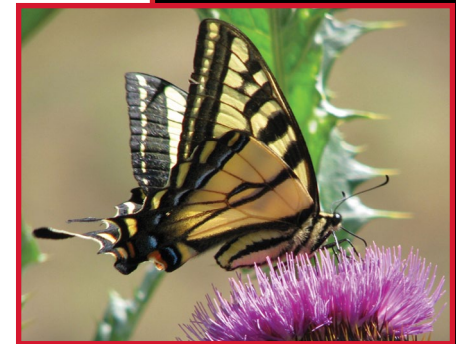
888-DAM-INFO (888-326-4636)

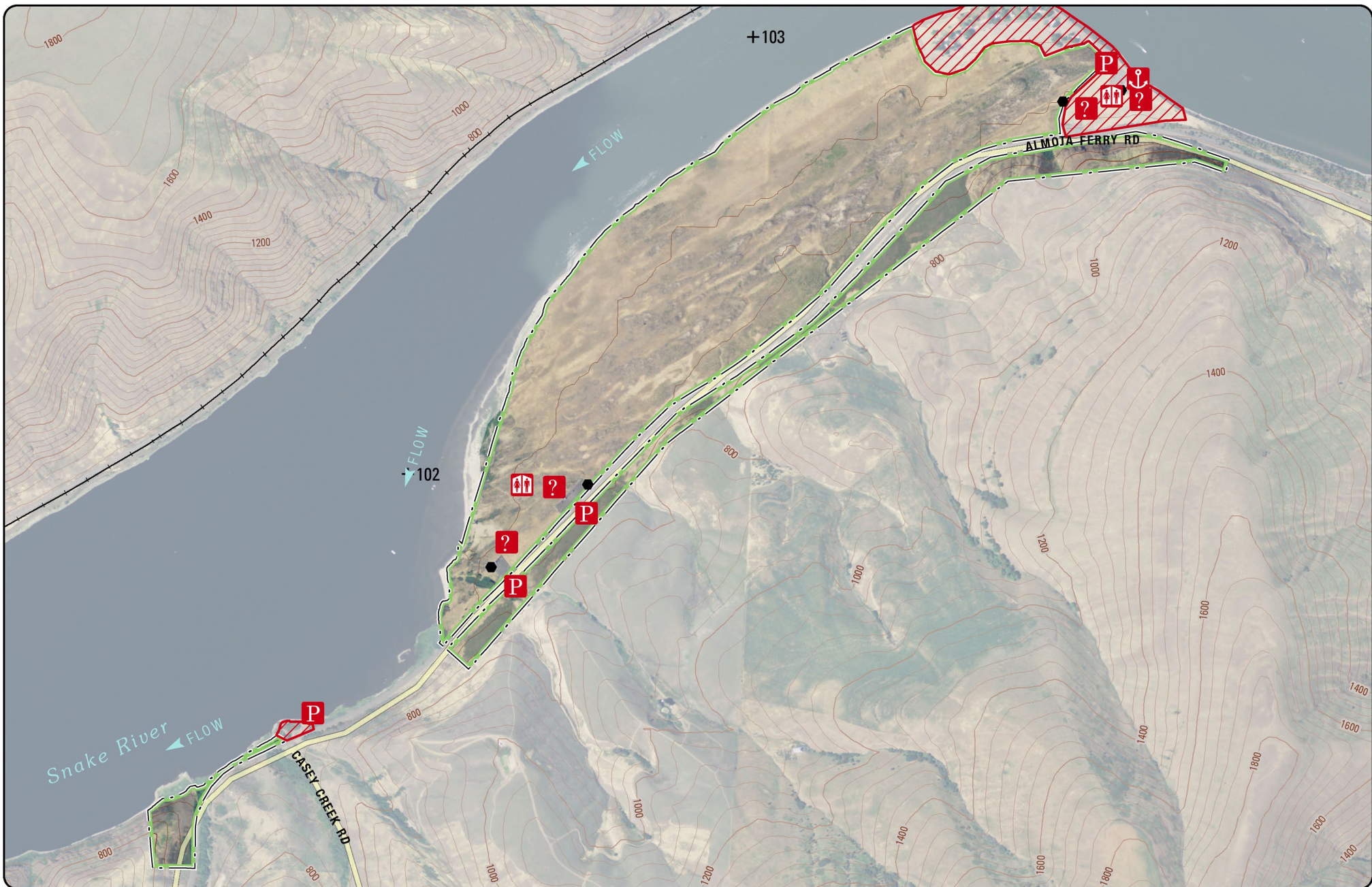


www.facebook.com/wallawallausace



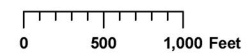
**US Army Corps
of Engineers®**





Illia Habitat Management Unit

- | | | | |
|--|---|--|---|
|  Gate |  Kiosk |  River Mile |  HMU Boundary |
|  Dock |  Parking |  Restroom |  Restricted Area |



Lon: -117.48 Lat: 46.69

SHOTGUN AND ARCHERY ONLY