



**US Army Corps  
of Engineers** ®  
Los Angeles District



---

**INDIAN BEND WASH 6  
LEVEE SYSTEM  
MARICOPA COUNTY, ARIZONA  
NLD SYSTEM ID # 380503006**

**PERIODIC INSPECTION REPORT NO. 1  
GENERALIZED EXECUTIVE SUMMARY**

**FINAL SYSTEM RATING: NOT APPLICABLE**

**FINAL RATING DATE: APRIL 1, 2016**

PERIODIC INSPECTION REPORT PREPARED BY  
URS GROUP, INC.  
FOR THE U.S. ARMY CORPS OF ENGINEERS, LOS ANGELES DISTRICT

SUBMITTED: SEPTEMBER 2015  
INSPECTED: AUGUST 5, 2014

## EXECUTIVE SUMMARY

This Executive Summary provides an introduction to the periodic inspection, an overview of the Indian Bend Wash 6 (IBW6) Levee System, a summary of the major findings of the periodic inspection, and the overall system rating.

### 1.1 Scope and Purpose of Periodic Inspections

The purpose of the IBW6 Levee System periodic inspection (PI) is to identify deficiencies that pose hazards to human life or property. The inspection is intended to identify the issues in order to facilitate future studies and associated repairs, as appropriate.

This assessment of the general condition of the IBW6 Levee System is based on available data and visual inspections. Detailed investigation and analysis involving hydrologic design, topographic mapping, subsurface investigations, testing, and detailed computational evaluations are beyond the scope of this levee system inspection.

### 1.2 System Summary

The IBW6 Levee System (Figure 1) is a part of the Indian Bend Wash Project, which was authorized by the Flood Control Act of 1965, 79 Statute 1073, Public Law 89-298, 89th Congress, 1st Session, approved on October 27, 1965 and amended by the 1974 Water Resources Development Act. Construction of the levee improvements was completed by USACE-SPL on November 15, 1979.

The IBW6 Levee System is located in the City of Scottsdale, in Maricopa County, Arizona. It is in Arizona's sixth congressional district and in Federal Emergency Management Agency (FEMA) Region 9.

The Indian Bend Wash Project, which includes the levee system, is operated and maintained by the Flood Control District of Maricopa County (FCDMC) in accordance with the local cooperation agreement for the Indian Bend Wash Project signed on September 23, 1974.

Figure 1 shows the IBW6 Levee System (National Levee Database [NLD] System ID #3805030006) and leveed area as depicted in the NLD. The Levee System Alignment (LSA) evaluated during this PI is on the right bank (looking downstream) of Indian Bend Wash (IBW), between Indian Bend Road to the north and an unnamed private roadway to the south, and oriented more or less parallel to the unnamed private roadway to the south. It extends from a point about 60 feet east of the turnoff from Indian Bend Road for the Sienna Condominiums, often referred to by online mapping websites as North Paradise View Road (Project Station 82+49), to the sidewalk on the eastern edge of the unnamed private roadway from Indian Bend Road to the Corriente Residences and the Scottsdale Silverado Golf Club clubhouse (Project Station 89+12), for a total length of about 644 feet (0.12 miles) measured along the LSA.

### 1.3 Summary of Major Deficiencies Found

A team of five professionals from URS inspected the IBW6 Levee System on August 4, 2014. From FCDMC, a Senior Civil Engineer in Engineering Division, and an Inspector from Operation and Maintenance (O&M) Division, accompanied the inspection. From the City of Scottsdale, two

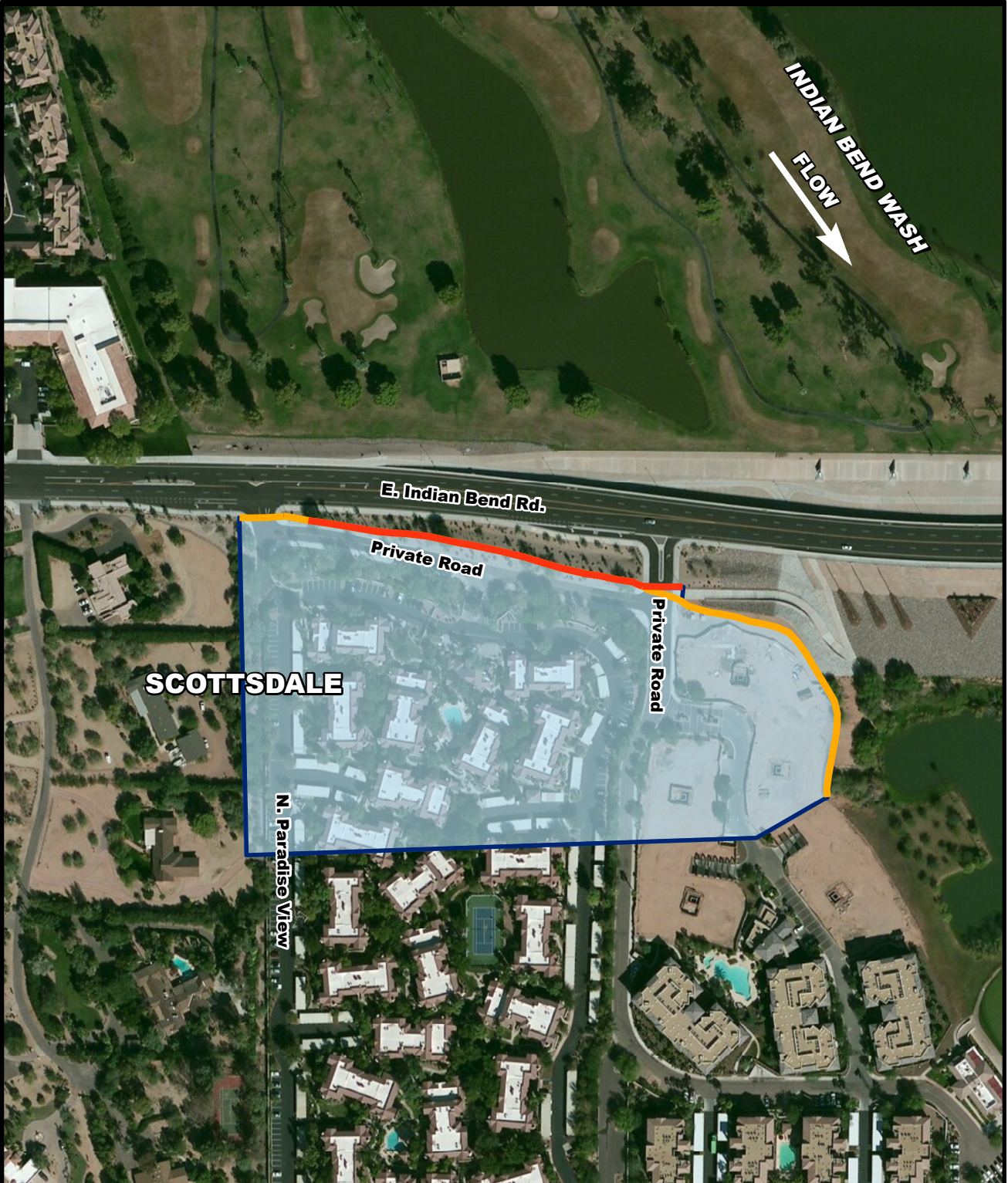
P.E. C.F.M. Stormwater Engineers attended, and an Engineer from the USACE-SPL Dam and Levee Safety Section acted as the Site Safety and Health Officer.

Each item on the levee system inspection checklists observed during the site inspection was rated Unacceptable (U), Minimally Acceptable (M), Acceptable (A) or Not Applicable (NA) following criteria incorporated in the Levee Inspection System (LIS). Recorded deficiencies of the Indian Bend Wash 6 Levee System are not enumerated here because the Levee Safety Officer, Los Angeles District, has determined that the feature included in the National Levee Database and inspected in this Periodic Inspection is not a levee system. The levee was removed and replaced with a non-engineered planting berm for esthetics. In place of the levee, via USACE SPL permit, a bridge replacement and corresponding flood damage reduction project were constructed by local entities. This inspection did not evaluate or rate the now existing flood damage reduction channel.

#### **1.4 Overall Rating**

The Levee Safety Out-Brief Meeting for the IBW6 Levee System was held on March 11, 2015 at the USACE-SPL headquarters, with a representative of the local sponsor and the City of Scottsdale participating by webinar. The Levee Safety Officer, Los Angeles District, has determined that the feature included in the National Levee Database and inspected in the Periodic Inspection of the IBW6 Levee System is not a levee system; consequently, it will be recommended that the IBW6 Levee System be annotated in the National Levee Database as being not a levee system. Therefore the levee system has not been rated.

The local sponsor will be notified of the plan to change the levee status of the IBW6 Levee System by letter.



I:\USACE GIS\Inspection Maps\IBW6\mxd\Revised Levee Area March 10-2015\USACE\_IBW6\_LeveeArea\_20Mar2015.mxd



**Legend**

- URS - Recommended LSA
- NLD LSA
- NLD Leveed Area

0      0.03      0.06 Miles

INDIAN BEND WASH 6 LEVEE SYSTEM  
PERIODIC INSPECTION REPORT NO. 1

**LOCATION AND  
LEVEED AREA MAP**

**URS** U.S. Army Corps  
of Engineers  
Los Angeles District

Figure 1