



**US Army Corps
of Engineers** ®
Los Angeles District



CUCAMONGA CREEK 3 LEVEE SYSTEM

SAN BERNARDINO COUNTY, CALIFORNIA

NLD SYSTEM ID # 3805010057

PERIODIC INSPECTION REPORT NO 1
GENERALIZED EXECUTIVE SUMMARY

FINAL SYSTEM RATING: MINIMALLY ACCEPTABLE
FINAL RATING DATE: MARCH 27, 2013

PERIODIC INSPECTION REPORT PREPARED BY TETRA TECH, INC.
FOR THE U.S. ARMY CORPS OF ENGINEERS, LOS ANGELES DISTRICT

SUBMITTED: FEBRUARY 2013
INSPECTED: APRIL 20, 2010

EXECUTIVE SUMMARY

This Executive Summary provides an introduction to the periodic inspection, an overview of the system, a summary of the major findings of the periodic inspection, and the overall rating for the system.

1.1 Scope and Purpose of Periodic Inspections

The purpose of this periodic inspection is to identify deficiencies that pose hazards to human life or property. The inspection is intended to identify the issues in order to facilitate future studies and associated repairs as appropriate.

This assessment of the general condition of the system is based on available data and visual inspections. Detailed investigation and analysis involving hydrologic design, topographic mapping, subsurface investigations, testing, and detailed computational evaluations is beyond the scope of this system inspection.

1.2 System Summary

Cucamonga Creek 3 Levee System is located in the City of Rancho Cucamonga, in the County of San Bernardino, in the State of California. Cucamonga Creek 3 Levee System is part of the Cucamonga Creek Channel. According to the National Levee Database, Cucamonga Creek 3 Levee System forms the right/west bank of a continuous concrete channel (looking downstream) from 8th Street to slightly downstream of Hellman Avenue, a total distance of 4,596 feet. The inspection limits were later redefined by the United States Army Corps of Engineers (USACE) to include only portions of the channel that had a levee embankment on the landward side. The inspection limits were redefined to extend from slightly downstream of 8th Street to approximately East 7th Street, a total length of 661 feet. The updated Cucamonga Creek 3 Levee System inspection limits are shown in Figure 1. This report focuses only on the updated inspection limits from slightly downstream of 8th Street to approximately East 7th Street. The San Bernardino County Flood Control District (SBCFCD) is the Local Sponsor for this system.

1.3 Summary of Major Deficiencies Found

Cucamonga Creek 3 Levee System was inspected on April 20, 2010. The Local Sponsor representative met with the inspection team and assisted with granting access along the length of the system. During the inspection of the system, a deficiency was noted for which remedial action is required. The following deficiency was noted during the inspection of the project features:

- Interior Drainage System
 - The 6-inch-diameter drainage inlet is missing a flap gate at the outlet. The flap gate needs to be replaced.

1.4 Overall Rating

The Levee Safety Officer, Los Angeles District, has determined the overall system rating of Cucamonga Creek 3 Levee System to be “Minimally Acceptable.” A “Minimally Acceptable” system rating is defined as:

CUCAMONGA CREEK 3 LEVEE SYSTEM
FINAL PERIODIC INSPECTION REPORT NO. 1

A Minimally Acceptable System is where one or more items are rated as Minimally Acceptable or one or more items are rated as Unacceptable and an engineering determination concludes that the Unacceptable items would not prevent the segment/system from performing as intended during the next flood event.

The Local Sponsor will be notified of the overall rating of the levee system by letter with instructions to correct the “Unacceptable” rated items as soon as possible, not to exceed two years, and to correct the “Minimally Acceptable” rated items within two years so that they do not deteriorate further and become “Unacceptable.”

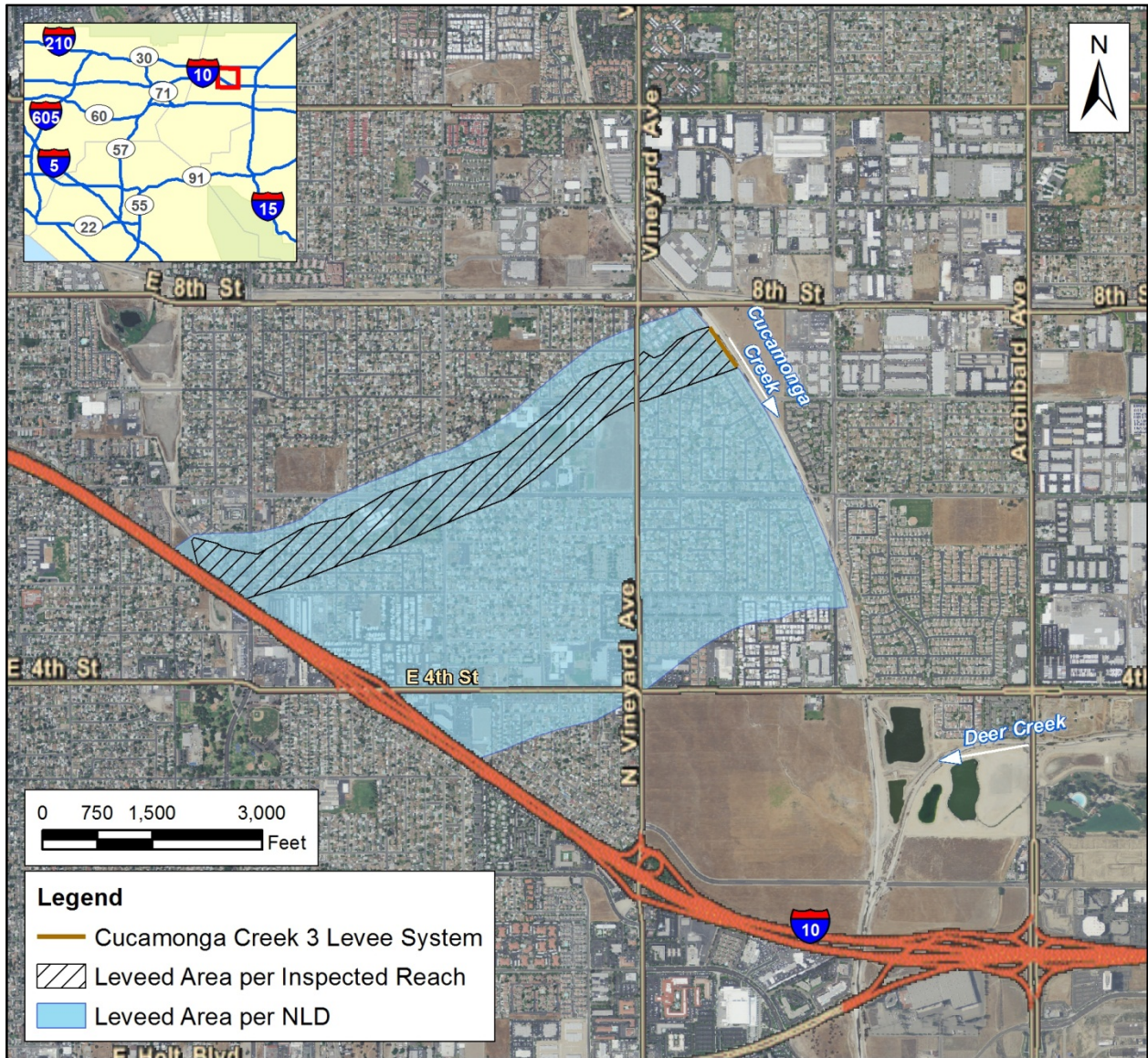


Figure 1. Cucamonga Creek 3 Levee System