



**US Army Corps  
of Engineers.**  
Los Angeles District



---

**CHINO CANYON LEVEE SYSTEM**  
**RIVERSIDE COUNTY, CALIFORNIA**  
**NLD ID # 3805010023**

**PERIODIC INSPECTION REPORT NO 1**  
**GENERALIZED EXECUTIVE SUMMARY**

**FINAL SYSTEM RATING: MINIMALLY ACCEPTABLE**  
**FINAL RATING DATE: 18 JANUARY 2013**

PERIODIC INSPECTION REPORT PREPARED BY TETRA TECH FOR THE  
U.S.ARMY CORPS OF ENGINEERS, LOS ANGELES DISTRICT

SUBMITTED: DECEMBER 2012  
INSPECTED: MAY 11, 2010

## EXECUTIVE SUMMARY

This Executive Summary provides an introduction to the periodic inspection, an overview of the system, a summary of the major findings of the periodic inspection, and the overall rating for the system.

### 1.1 Scope and Purpose of Periodic Inspections

The purpose of the Chino Canyon Levee System periodic inspection is to identify deficiencies that pose hazards to human life or property. The inspection is intended to identify the issues in order to facilitate future studies and associated repairs, as appropriate.

This assessment of the general condition of the levee system is based on available data and visual inspections. Detailed investigation and analysis involving hydrologic design, topographic mapping, subsurface investigations, testing, and detailed computational evaluations is beyond the scope of this levee system inspection.

### 1.2 System Summary

The Chino Canyon levee is located in the City of Palm Springs, County of Riverside, in the State of California. The Chino Canyon levee runs along the right/southeast bank (looking downstream) of Chino Canyon Creek, from approximately Tramway Road at Station 267+60 to North Indian Canyon Road at Station 101+20 (see Figure 1). The total reach length is approximately 16,640 feet. Chino Canyon Levee System was federally authorized and subsequently constructed by the United States Army Corps of Engineers (USACE). It is now entirely owned, operated and maintained by the Riverside County Flood Control and Water Conservation District (RCFC & WCD).

### 1.3 Summary of Major Deficiencies Found

The Chino Canyon Levee System was inspected on May 11, 2010. During the inspection of the levee system, several deficiencies were noted for which remedial actions are required. Each item of concern observed during the site inspection was rated “Unacceptable”, “Minimally Acceptable”, or “Acceptable.” The following main deficiencies were noted during the inspection of the project features:

- Levee Embankments
  - Vegetation growth (brush, tall grass, and trees with trunks greater than 2 inches in diameter) is present within the vegetation-free zone. The vegetation-free zone extends 15 feet outward from both the landward and riverward toes of the levee prism.
  - Depressions and ruts deeper than 6 inches are present on the levee slopes and crown. These are likely to become deeper if not addressed.
  - In some locations, inspection of the embankment slopes was inhibited due to dense vegetation and/or fill-material cover.
- Interior Drainage System
  - Sand and debris have obstructed more than 10 percent of a side-drainage outlet structure and the flap gate cannot be opened because of the obstructions.

- The condition of the side-drainage pipe, has not been verified using television-camera videotaping or other visual-inspection methods within the past five years.

#### **1.4 Overall Rating**

The Levee Safety Officer, Los Angeles District, has determined the overall system rating of Chino Canyon Levee to be Minimally Acceptable. A Minimally Acceptable system rating is defined as:

*A Minimally Acceptable System is where one or more items are rated as Minimally Acceptable or one or more items are rated as Unacceptable and an engineering determination concludes that the Unacceptable items would not prevent the segment/system from performing as intended during the next flood event.*

The local sponsor will be notified of the overall rating of the levee system by letter with instructions to correct the “Unacceptable” rated items as soon as possible, not to exceed two years, and to correct the “Minimally Acceptable” rated items so that they do not deteriorate further and become “Unacceptable.”

CHINO CANYON LEVEE SYSTEM  
FINAL PERIODIC INSPECTION REPORT NO. 1

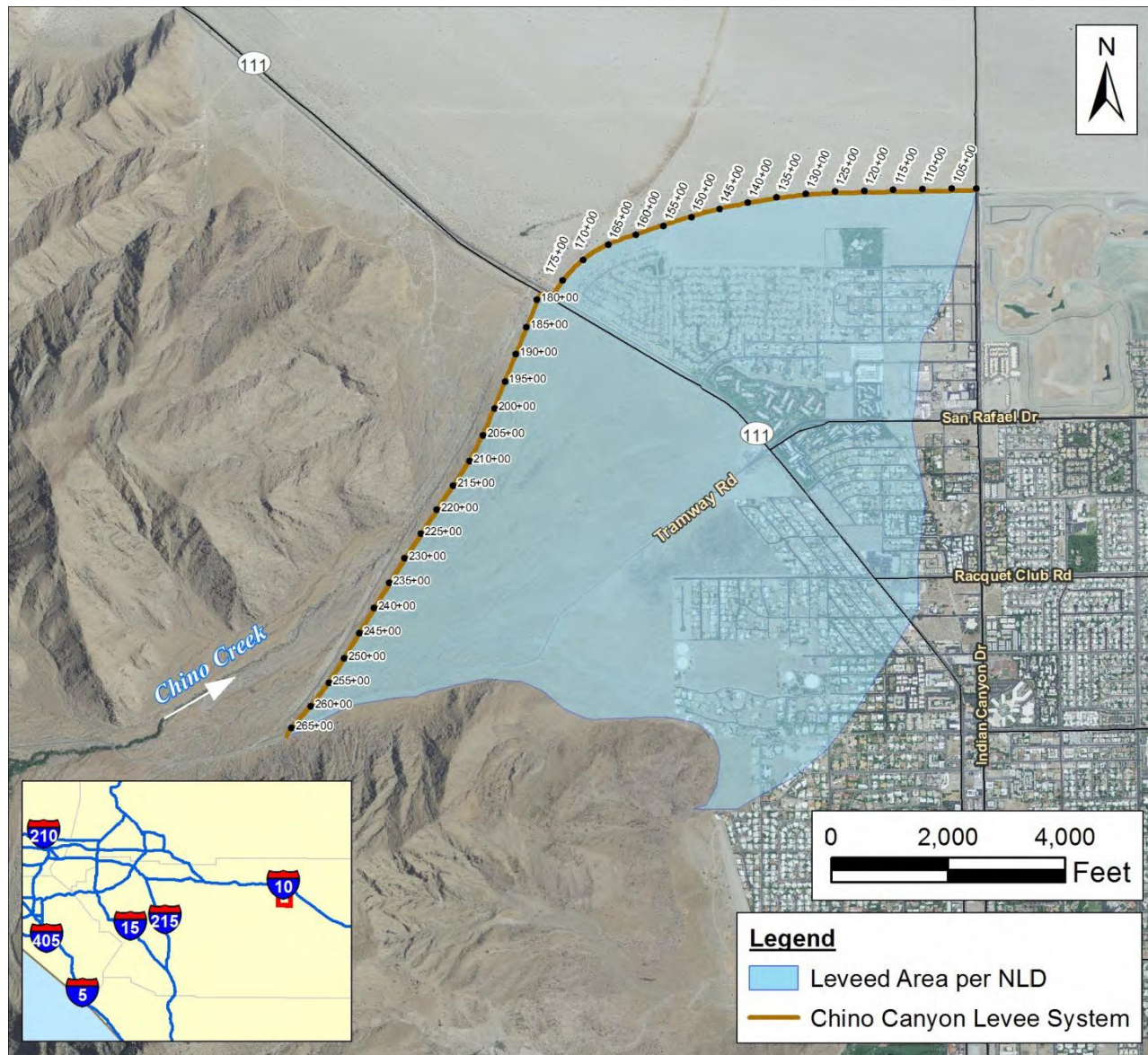


FIGURE 1