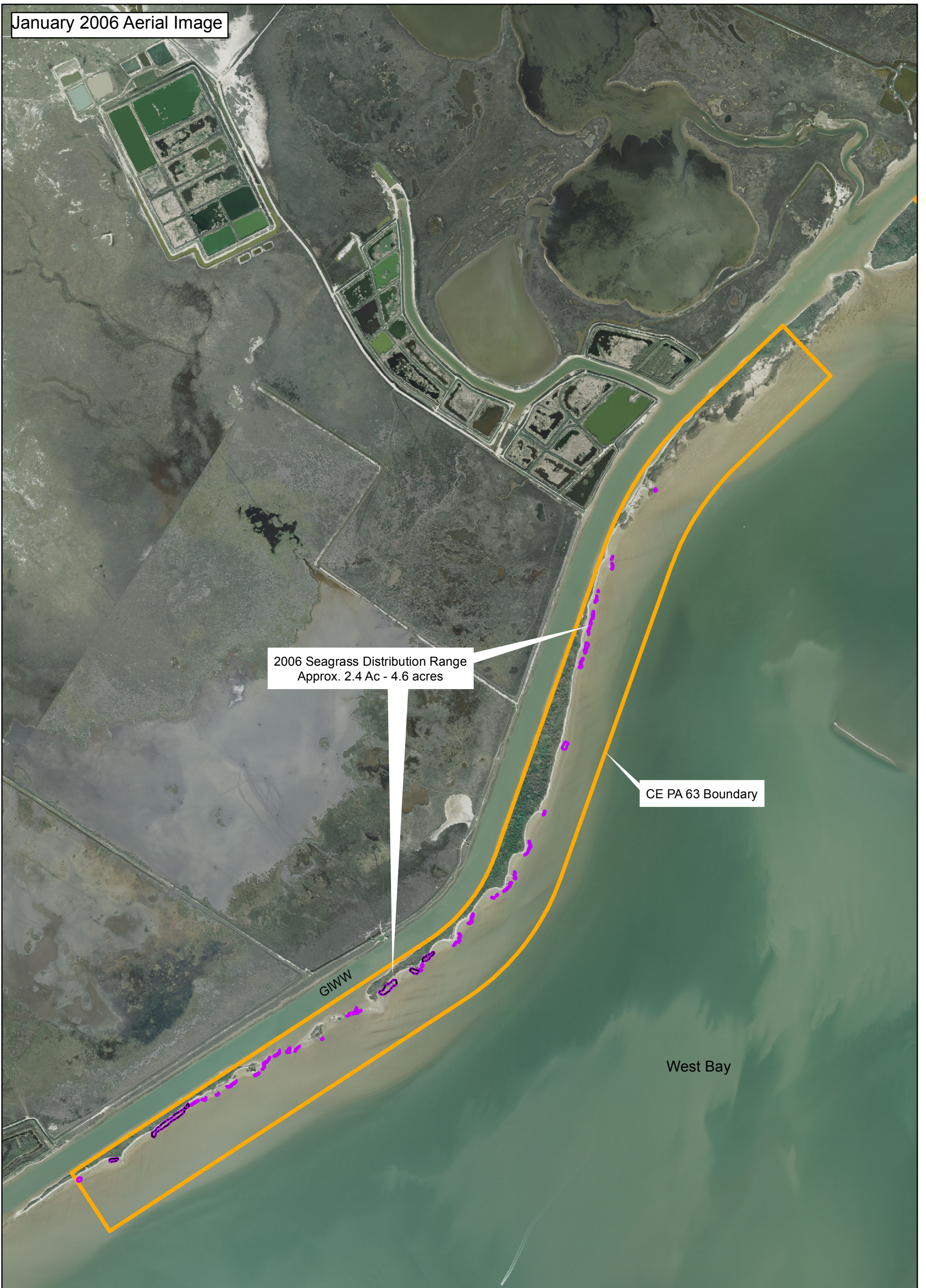


January 2006 Aerial Image



2006 Seagrass Distribution Range
Approx. 2.4 Ac - 4.6 acres

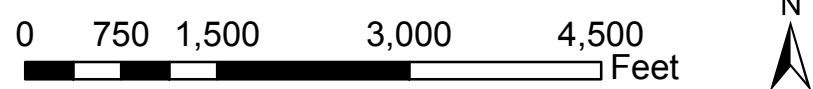
CE PA 63 Boundary

GIWW




West Bay

Appendix E: Figure 4
Historical Evaluation of Seagrass Beds
Corps of Engineers GIWW PA 63,
Galveston County, Texas

Notes:
- Imagery obtained from TNRIS, Galveston, County. Image date January 2006.
- Prepared by Belaire Environmental, Inc. January 24, 2012 (KNT), Revised February 3, 2012 (KNT), Revised August 31, 2012 (KNT).



Legend

-  2006 Seagrass Boundary (Approx. 2.4 Ac)
-  Extended 2006 Seagrass Boundary (Approx. 4.6 Ac)
-  CE PA 62 Boundary

April 9, 2008 Aerial Image

Greens Lake

GIWW

2008 Seagrass Distribution Range
Approx. 108.8 Ac - 121.5 Ac

CE PA 62 Boundary

West Bay




Appendix E: Figure 5
Historical Evaluation of Seagrass Beds
Corps of Engineers GIWW PA 62,
Galveston County, Texas

Notes:
- Imagery obtained from TNRIS, Galveston, County. Image date April 9, 2008.
- Prepared by Belaire Environmental, Inc. January 24, 2012 (KNT), Revised February 3, 2012 (KNT), Revised August 31, 2012 (KNT).

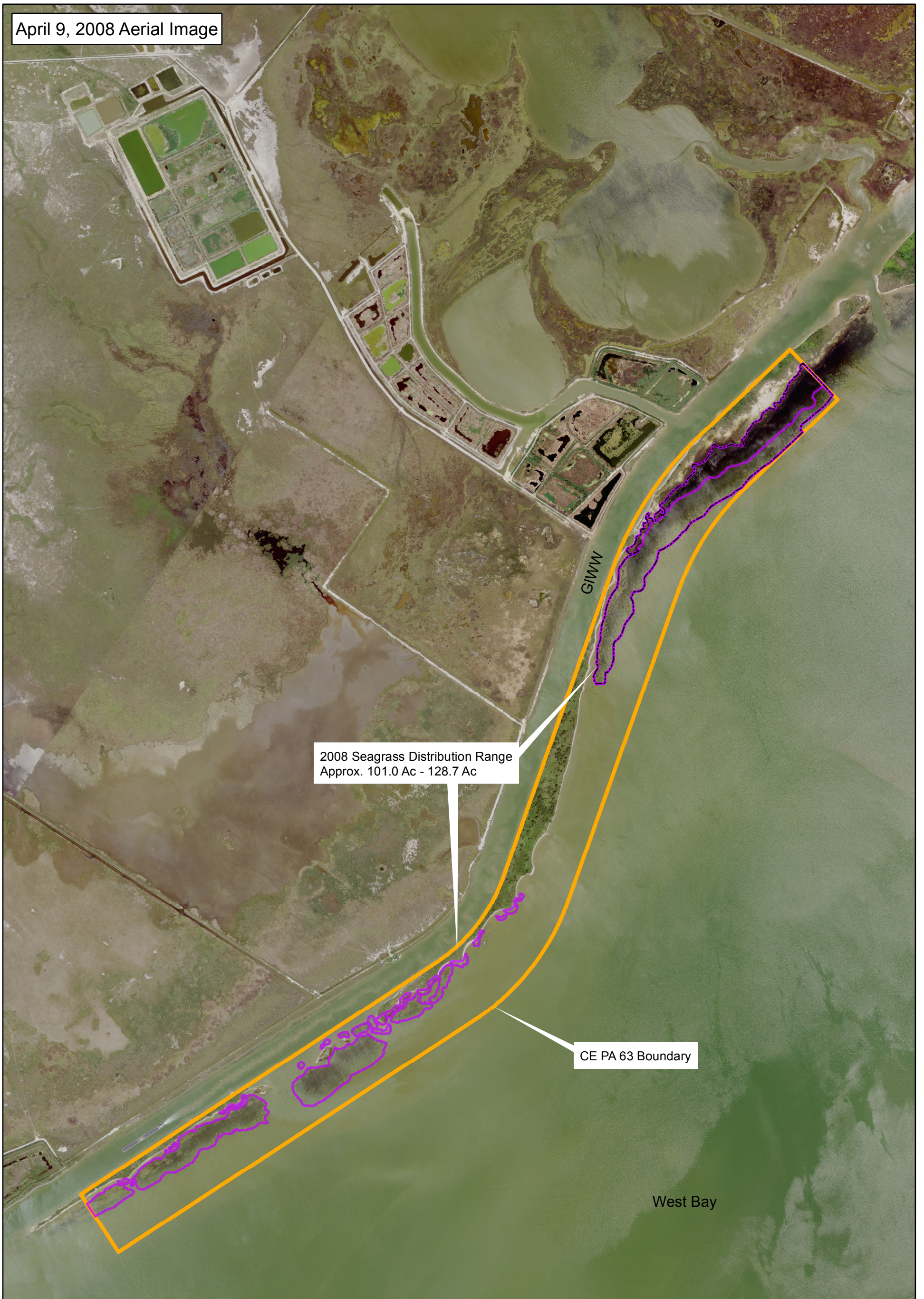
0 500 1,000 2,000 3,000 Feet



Legend

-  2008 Seagrass Boundary (Approx. 108.8 Ac)
-  Extended 2008 Seagrass Boundary (Approx. 121.5 Ac)
-  CE PA 62 Boundary

April 9, 2008 Aerial Image



2008 Seagrass Distribution Range
Approx. 101.0 Ac - 128.7 Ac

CE PA 63 Boundary

West Bay




Appendix E: Figure 6
Historical Evaluation of Seagrass Beds
Corps of Engineers GIWW PA 63,
Galveston County, Texas

Notes:
- Imagery obtained from TNRIS, Galveston, County. Image date April 9, 2008.
- Prepared by Belaire Environmental, Inc. January, 24 2012 (KNT), Revised February 3, 2012 (KNT), Revised August 31, 2012 (KNT).

0 750 1,500 3,000 4,500
Feet



Legend

-  2008 Seagrass Boundary (Approx. 101.0 Ac)
-  Extended 2008 Seagrass Boundary (Approx. 128.7 Ac)
-  CE PA 62 Boundary

January 19, 2009 Aerial Image

Greens Lake

GIWW

2009 Seagrass Distribution Range
Approx. 123.5 Ac - 133.8 Ac

CE PA 62 Boundary

West Bay




**Appendix E: Figure 7
Historical Evaluation of Seagrass Beds
Corps of Engineers GIWW PA 62,
Galveston County, Texas**

Notes:
- Imagery obtained from TNRIS, Galveston, County. Image date January 19, 2009.
- Prepared by Belaire Environmental, Inc. January 24, 2012 (KNT), Revised February 3, 2012 (KNT), Revised August 31, 2012 (KNT).

0 500 1,000 2,000 3,000 Feet



Legend

-  2009 Seagrass Boundary (Approx. 123.5 Ac)
-  Extended 2009 Seagrass Boundary (Approx. 133.8)
-  CE PA 62

January 19, 2009 Aerial Image





Appendix E: Figure 8
Historical Evaluation of Seagrass Beds
Corps of Engineers GIWW PA 63,
Galveston County, Texas

Notes:
- Imagery obtained from TNRIS, Galveston, County. Image date January 19, 2009.
- Prepared by Belaire Environmental, Inc. January 24, 2012 (KNT), Revised February 3, 2012 (KNT), Revised August 31, 2012 (KNT).

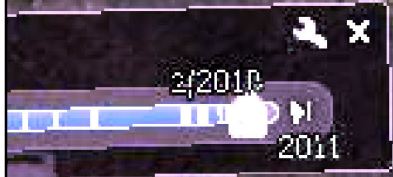
0 500 1,000 2,000 3,000 4,000
Feet



Legend

-  2009 Seagrass Boundary (Approx. 155.5 Ac)
-  CE PA 63 Boundary

January 1, 2010 Aerial Image



Greens Lake

2010 Seagrass Distribution Range
Approx. 111.3 Ac - 114.4 Ac

CE PA 62 Boundary

GIWW

Image Houston-Galveston Area Council

29°15'05.15" N 94°59'51.76" W elev -1 ft

1969

West Bay


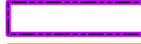

**Appendix E: Figure 9
Historical Evaluation of Seagrass Beds
Corps of Engineers GIWW PA 62,
Galveston County, Texas**

Notes:
- Imagery obtained from TNRIS, Galveston, County. Image date May 3, 2010.
- Prepared by Belaire Environmental, Inc. January 23, 2012 (KNT), Revised February 3, 2012. Revised August 31, 2012 (KNT).

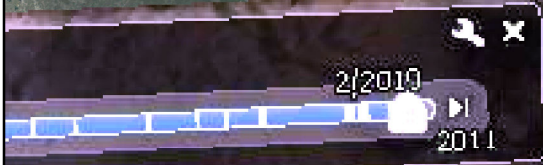
0 500 1,000 2,000 3,000 Feet



Legend

-  2010 Seagrass Boundary
-  Extended 2010 Seagrass Boundary (Approx. 114.4 Ac)
-  CE PA 62 Boundary (Approx. 111.3 Ac)

January 1, 2010 Aerial Image



Imagery Date: 1/5/2010 1969

2010 Seagrass Coverage
Approx. 164.4 acres

CE PA 63 Boundary

GIWW

West Bay

Image Houston-Galveston Area Council

29°13'09.47" N 95°01'54.29" W elev 6 ft

2010 1964



**Appendix E: Figure 10
Historical Evaluation of Seagrass Beds
Corps of Engineers GIWW PA 63,
Galveston County, Texas**

Notes:
- Imagery obtained from TNRIS, Galveston, County. Image date May 3, 2010.
- Prepared by Belaire Environmental, Inc. January 23, 2012 (KNT), Revised February 3, 2012. Revised August 31, 2012 (KNT).

0 500 1,000 2,000 3,000 4,000 Feet



Legend

-  2010 Seagrass Boundary (Approx. 164.4 Ac)
-  CE PA 63 Boundary