



Reply to
Attention of

DEPARTMENT OF THE ARMY
US ARMY CORPS OF ENGINEERS
NORFOLK DISTRICT
FORT NORFOLK
803 FRONT STREET
NORFOLK VA 23510-1096

CENAO-EX

9 September 2014

COMMANDER'S POLICY MEMORANDUM NUMBER WRD-02

SUBJECT: Norfolk District Policy on Hunting, Trapping, and Fishing on Water Resources Projects

1. Reference: Title 36 Code of Federal Regulations, Chapter III, Part 327

2. Purpose: To establish policy with regard to hunting, trapping, and fishing on the Norfolk District's three water resource projects in accordance with Title 36 Code of Federal Regulations, Chapter III, Part 327, and in particular, Sections 327.12, 327.13, and 327.8. The three projects are the Atlantic Intracoastal Waterway (AIWW), Craney Island Dredged Material Management Area (CIDMMA), and Gathright Dam. Enclosed are the property boundaries.

3. Description of the Norfolk District Water Resource Projects:

a. Atlantic Intracoastal Waterway: The AIWW project within the Norfolk District is approximately 3,100 acres with boundaries consisting of the Albemarle and Chesapeake Canal (ACC) and the Dismal Swamp Canal (DSC). The ACC is a 12-foot deep channel with widths of 90 feet inland cuts and 125 feet to 250 feet river cuts. The project also consists of a drawbridge at North Landing, Virginia, and a navigation lock and support facility at Great Bridge, Virginia. The DSC is a 10-foot deep channel and 100 feet wide in Deep Creek and Pasquotank River, a channel 6 feet deep and 50 feet wide in the Dismal Swamp, and a channel 10 feet deep and 80 feet wide in Turners Cut. The project also consists of one highway drawbridge and navigation lock at Deep Creek, Virginia, and one highway drawbridge and navigation lock at South Mills, North Carolina, and three water control structures.

b. Craney Island Dredged Material Management Area: The CIDMMA is comprised of a dredged material placement area approximately 2,500 acres in size, the adjacent waters extending approximately 1,000 feet from the shoreline, a rehandling basin with access channels extending to the Norfolk Harbor Channel, a berthing area with a sheet-pile bulkhead facility and access channel, armor stone breakwaters, concrete rubble shore protection, approximately 12 miles of paved and un-paved roads, administrative office building, mechanic shop, engineer equipment storage building, and other storage and maintenance facilities.

CENAO-EX

SUBJECT: Norfolk District Policy on Hunting, Trapping, and Fishing on Water Resources Projects

c. **Gathright Dam:** Gathright Dam is approximately 250 acres located on the Jackson River in Alleghany County, Virginia. Congress authorized construction of the dam and reservoir in the Flood Control Act of 1946, to provide protection of industrial, commercial and residential properties along the Jackson and James Rivers, with immediate impact on Covington, VA, located about 20 miles downstream. The construction of the dam began in 1974 and was completed in 1979. The dam is a rolled rock fill embankment with a compacted earthen clay core, outlet works, and an emergency spillway located at the right abutment. The embankment is 1,310 feet long with a height of 257 feet. The width is 32 feet at the top of the dam with a maximum width of 1000 feet at its base.

4. Policy with regard to Hunting, Trapping and Fishing on Norfolk District Water Resource Projects:

a. **Hunting:** In order to assure the public's safety and to protect historic and natural resources, hunting is prohibited on all three projects.

b. **Trapping:** In order to assure the public's safety and to protect historic and natural resources, trapping is prohibited on all three projects.

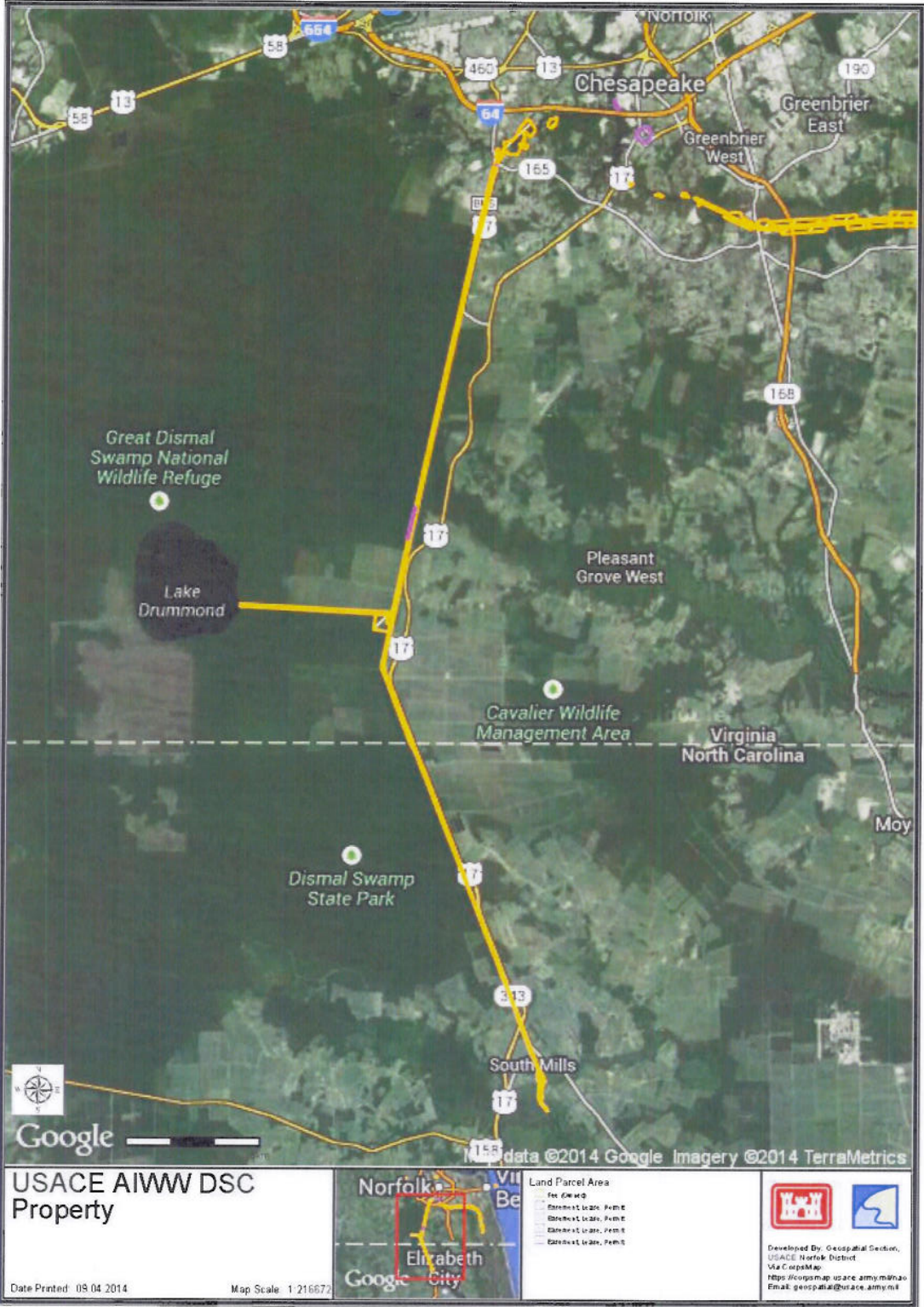
c. **Fishing:** Fishing is allowed along the AIWW and Gathright Dam in areas open to the public. Fishing is not allowed on CIDMMA, since this is an active construction site. All state fishing regulations, including licensing requirements, apply.

5. Signage: Signs will be installed at all compound areas on all three water resource projects. Additional signs will be installed as required to protect the public. Signs shall be in accordance with the Corps of Engineers Sign Standards Manual.



PAUL B. OLSEN, P.E.
Colonel, EN
Commanding

Encl



- Land Parcel Area
- Fee (owns)
 - Easement, Lease, Permit
 - Easement, Lease, Permit
 - Easement, Lease, Permit
 - Easement, Lease, Permit

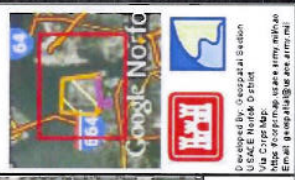


USACE Craney Island Property

0 500 1000 1500m

Date Printed: 09/03/2014 Map Scale: 1:54168

Developed by: Coastal Station
 USACE Norfolk District
 Via CorpMap
 Map Footprints are a service provided by Google Earth Pro



- Land Parcel Area
- Fee (Owned)
 - Easement, Lease, Permit
 - Easement, Lease, Permit
 - Easement, Lease, Permit
 - Easement, Lease, Permit



Created by: Chesapeake Section
 USACE Norfolk District
 Via Copied Map
 File: Z:\working\0606\amr\msh\0606_11031302\0606_11031302_01.mxd

Map data ©2014 Google Imagery ©2014, Commonwealth of Virginia, DigitalGlobe, USDA Farm Service Agency

Scale: 1:11332

Date Printed: 08/03/2014

Google

USACE Gathright Property