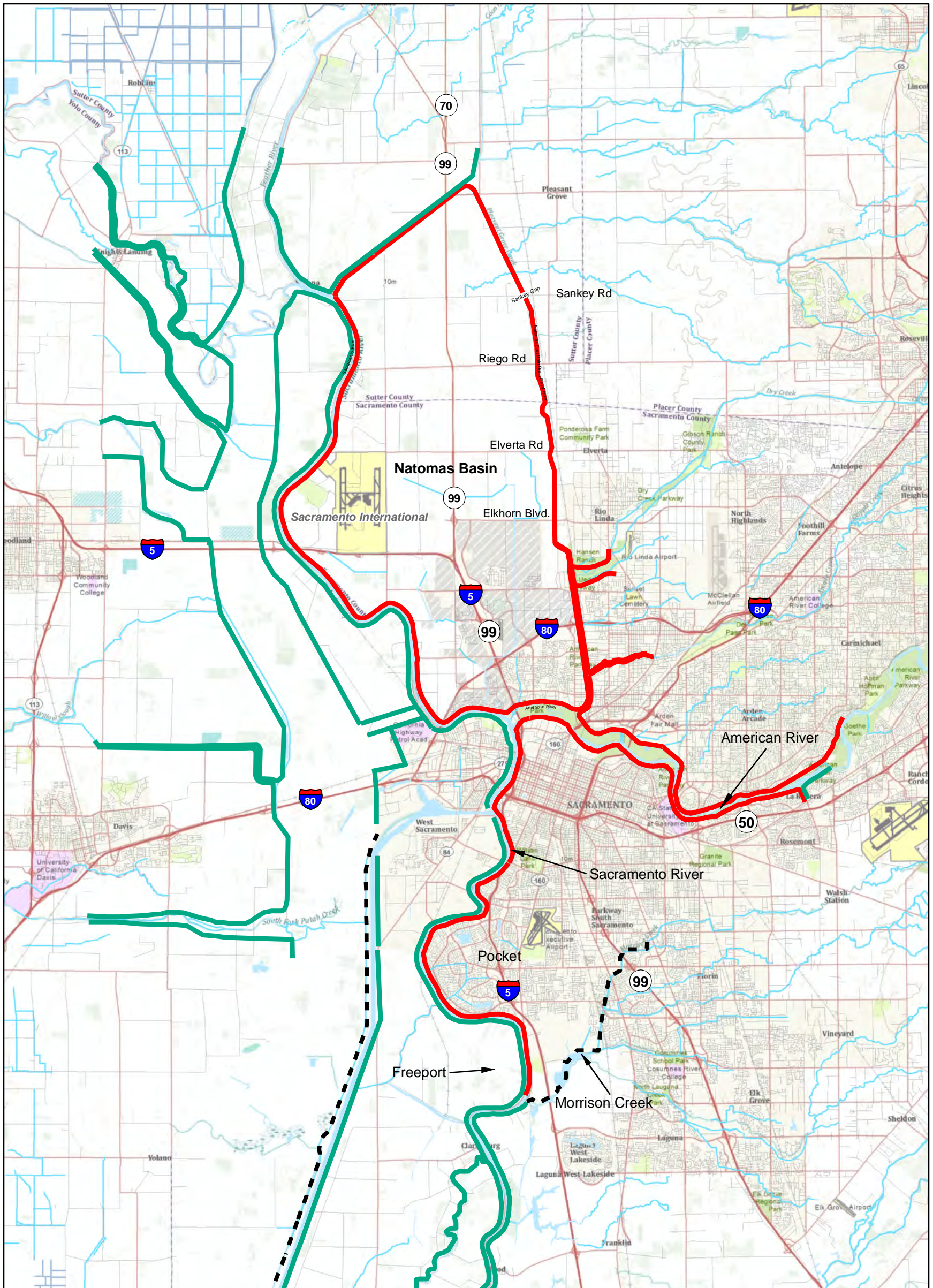
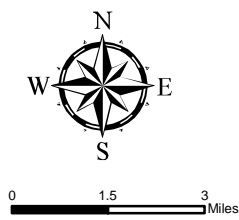


PLATES



American River Common Features Project, Natomas Post-Authorization Change Report



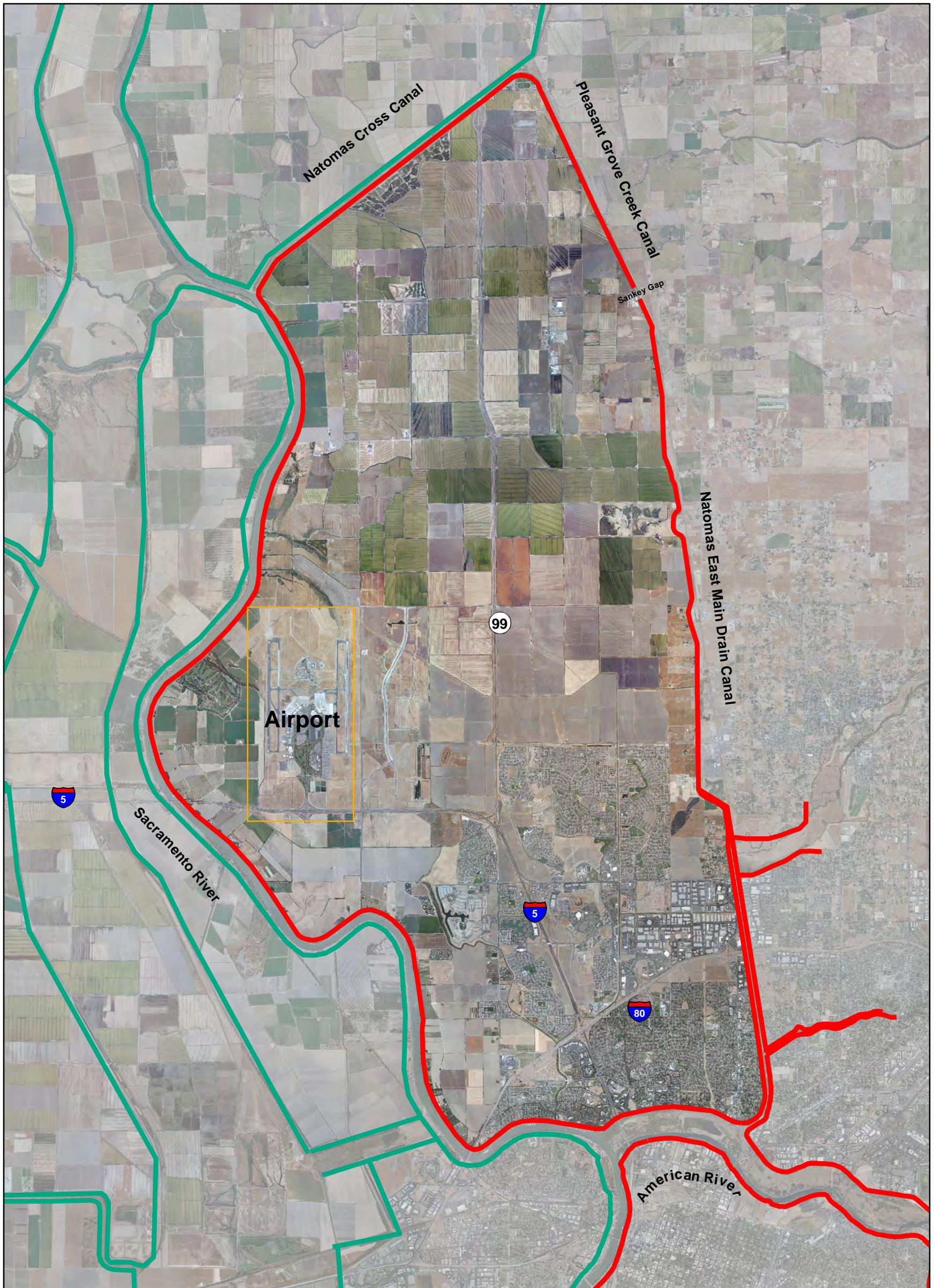
June 2010



Plate 1
Project Levees

Legend

- Project Levees Protecting the City of Sacramento
- Other Project Levees
- - - Non-Project Levees
- ▨ NewUrbanDevelopment



American River Common Features Project, Natomas Post-Authorization Change Report



0 0.75 1.5 Miles

June 2010



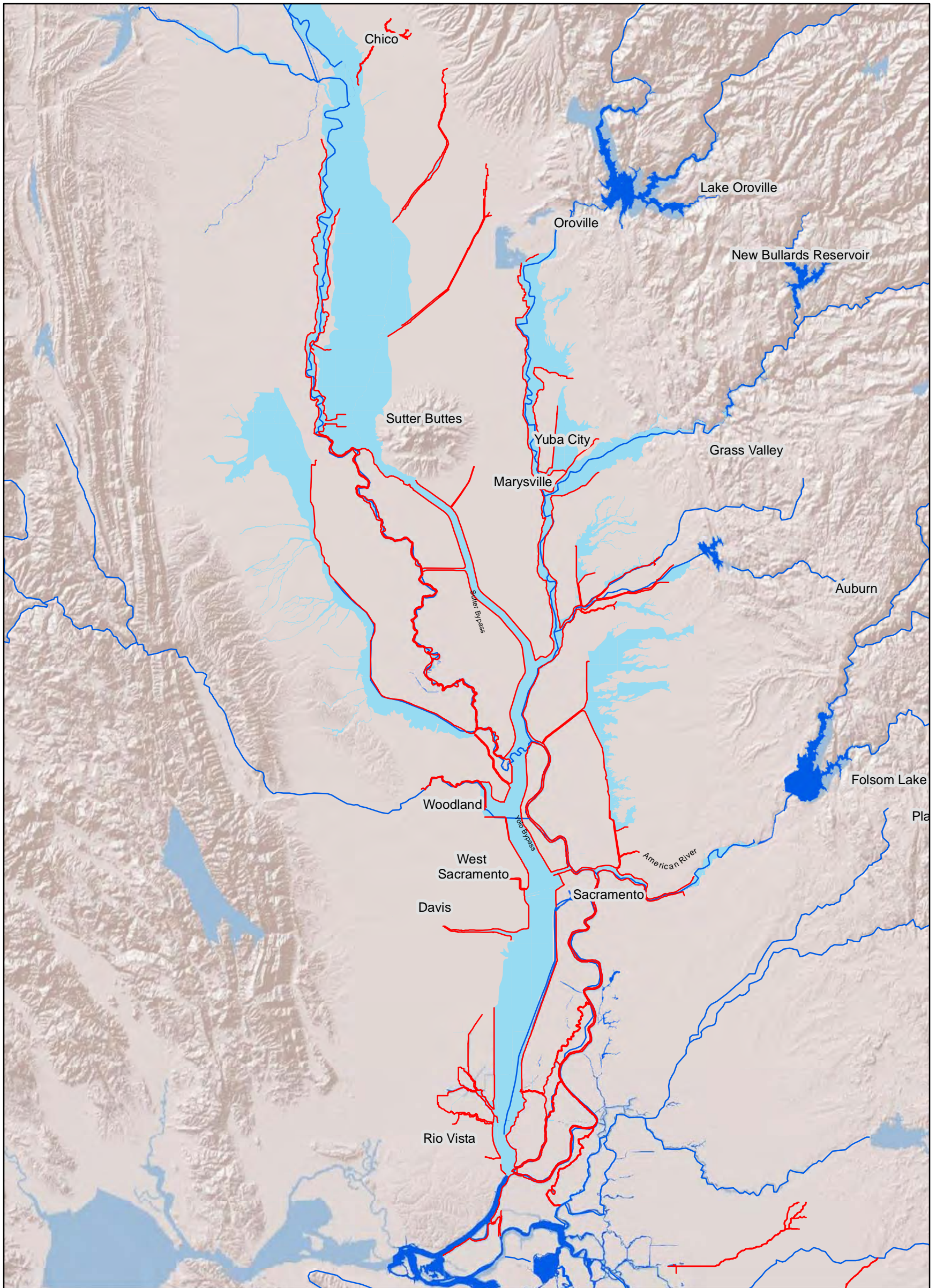
US Army Corps of Engineers



Plate 2
Natomas Basin

Legend

- Project Levees Protecting the City of Sacramento
- Other Project Levees
- Non-Project Levees
- Sacramento Airport

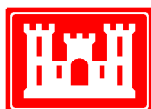


American River Common Features Project, Natomas Post-Authorization Change Report



0 5 10 Miles

June 2010



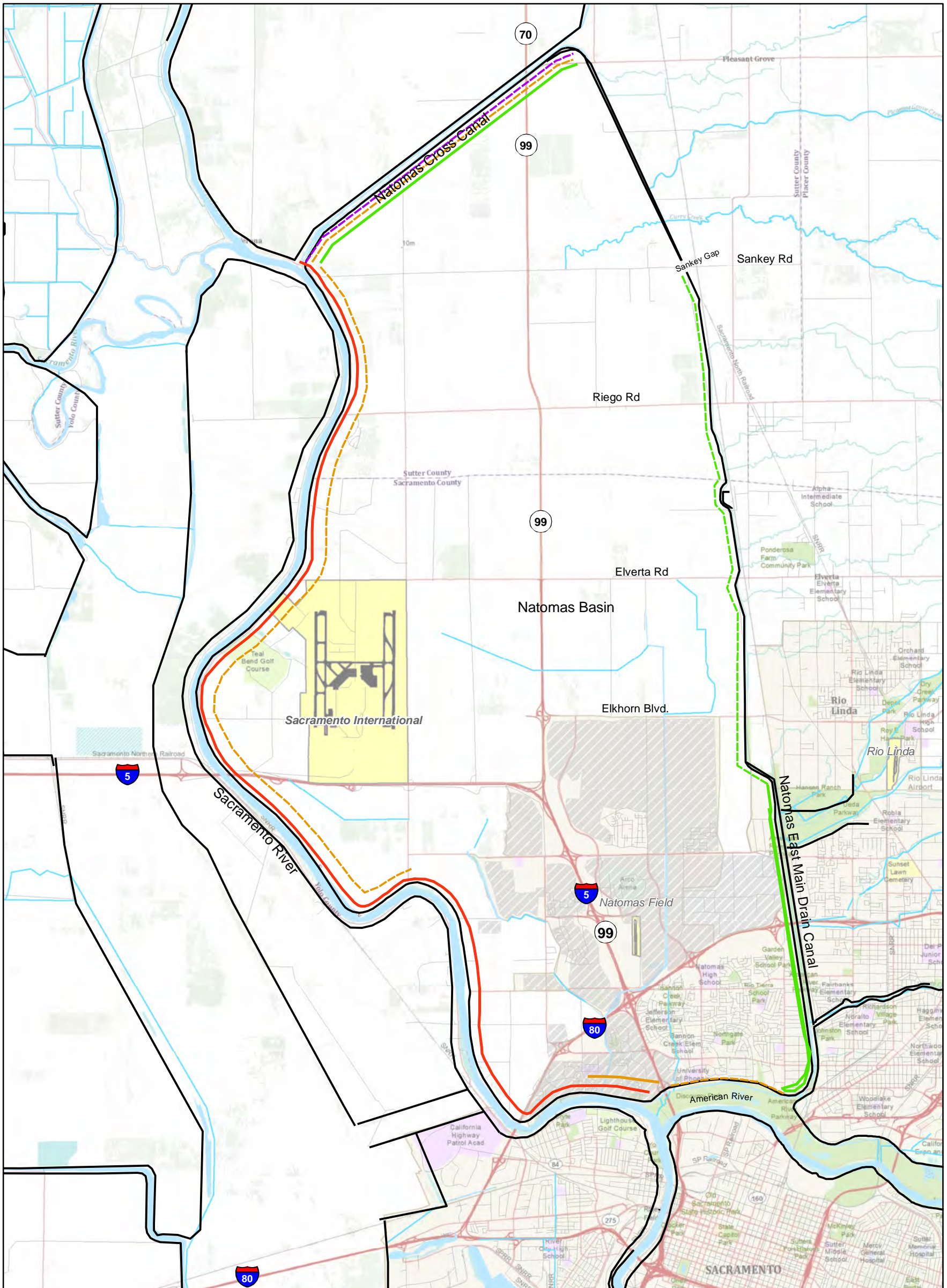
US Army Corps of Engineers



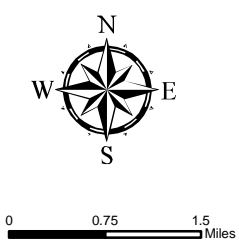
Plate 3
Sacramento River
Floodways

Legend

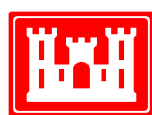
- Federal Levees
- Sacramento River System Floodways



American River Common Features Project, Natomas Post-Authorization Change Report



June 2010



US Army Corps of Engineers

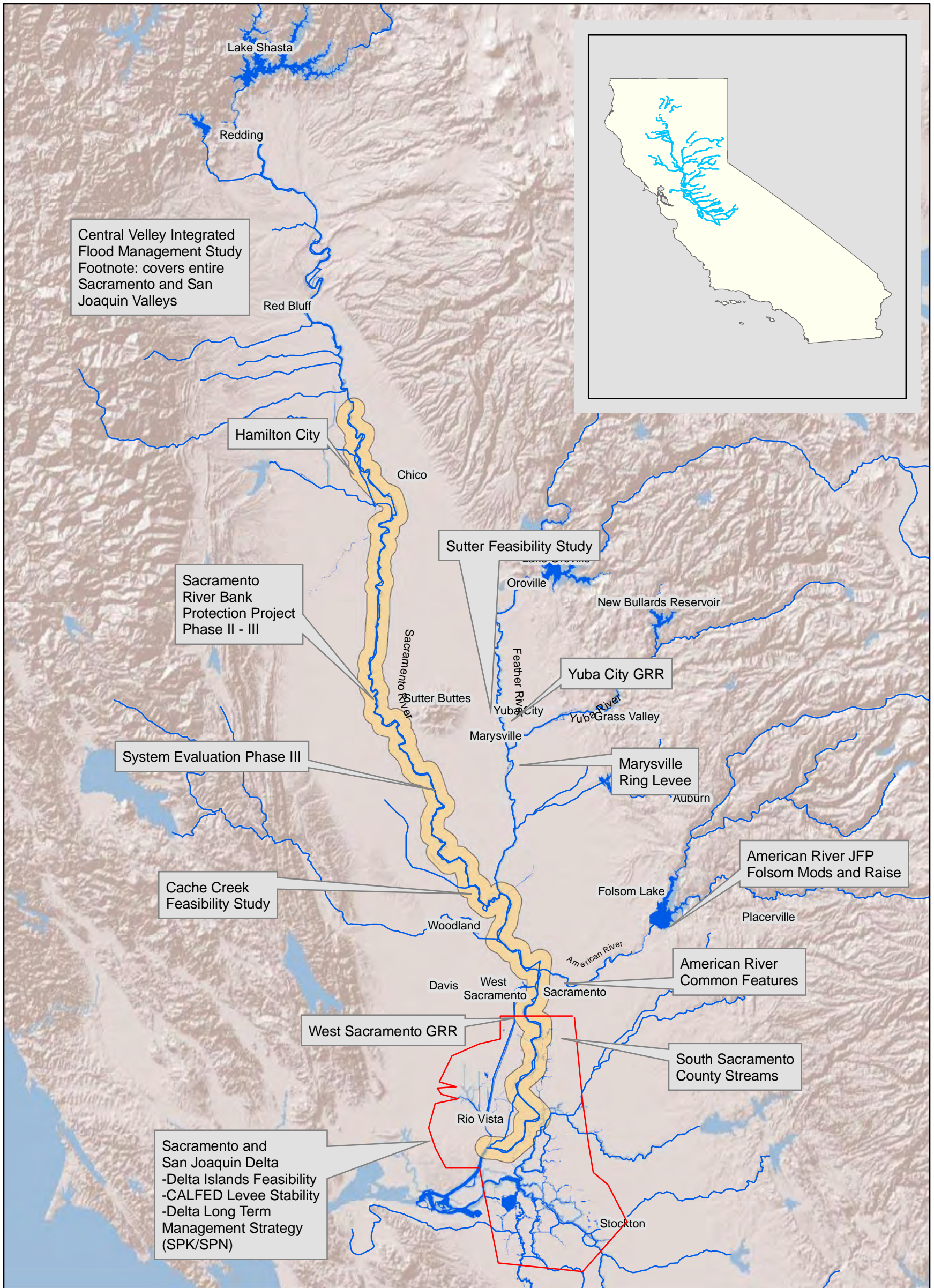


Plate 4
 Details of Authorized and Constructed
 Levee Improvement in the Natomas Basin

Legend

- Common Features WRDA 96
- - - Common Features WRDA 99
- North Area Local Project
- Sacramento Urban
- Sacramento River System

Note: Dashed lines represent features not constructed and Solid lines represent features constructed.



American River Common Features Project, Natomas Post-Authorization Change Report



0 8.5 17 Miles

June 2010



US Army Corps of Engineers



Plate 5
Sacramento Valley Streams
SPK Study/Projects Map

Legend

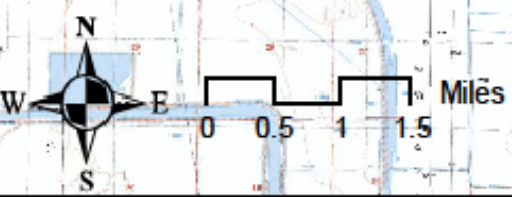
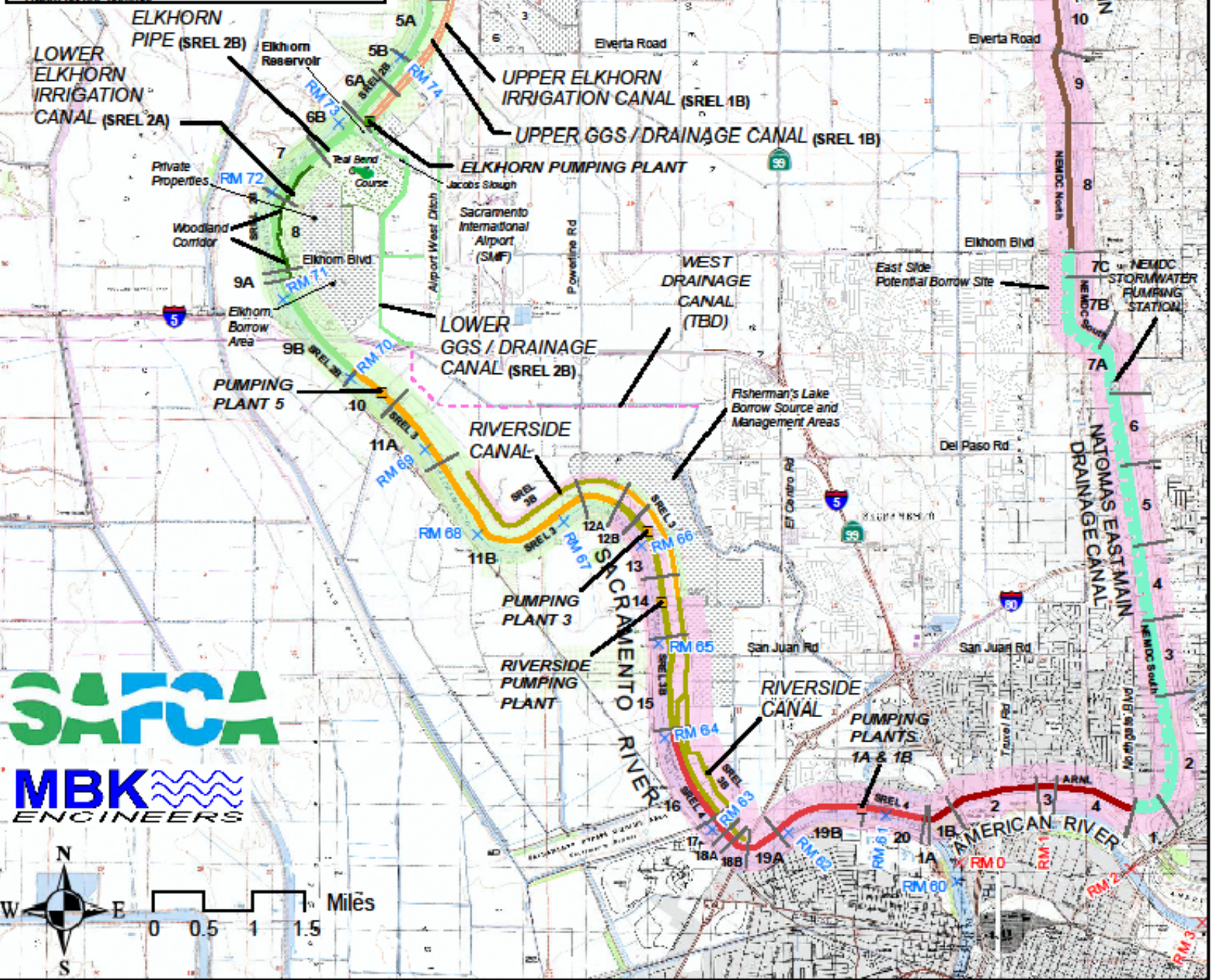
- Sacramento River and Tributaries Centerline
- Sacramento Bank Protection

CONSTRUCTION PHASING MAP
Natomas Levee Improvement Program
 July 13, 2010

SUBJECT TO CHANGE

Legend

| Project Phase | Construction Phase (Award Date) |
|--|---|
| Construction by SAFCA | |
| Phase 1 Project | NCC 1 (completed) NCC 1B (completed) |
| Phase 2 Project | NCC 2 SREL 1B (July 16, 2009) NCC 2B (April 29, 2010) * |
| Phase 3 Project (3A and 3B) | SREL 2A (December 10, 2009) SREL 2B (April 29, 2010) * |
| Phase 4A Project | SREL 3 - Reaches 10 to 12A (August 19, 2010) Riverside Canal: SREL 3 Reach 12B to Riverside PP (August 19, 2010) |
| Construction by USACE | |
| Phase 3 Project (3C) | PGCC: 100-year (2014) NEMDC South: 100-year (2013) |
| Phase 4A Project (continuation from SAFCA) | SREL 3B - Reaches 12B to 15 (2012) Riverside Canal: SREL 3B (August 2011) NCC 3 (2014) |
| Phase 4B Project | SREL 4 (2012) NEMDC North (2013) American River (2012) PGCC: 200-year (TBD) NEMDC South: 200-year (TBD) NCC 4 (2014) |

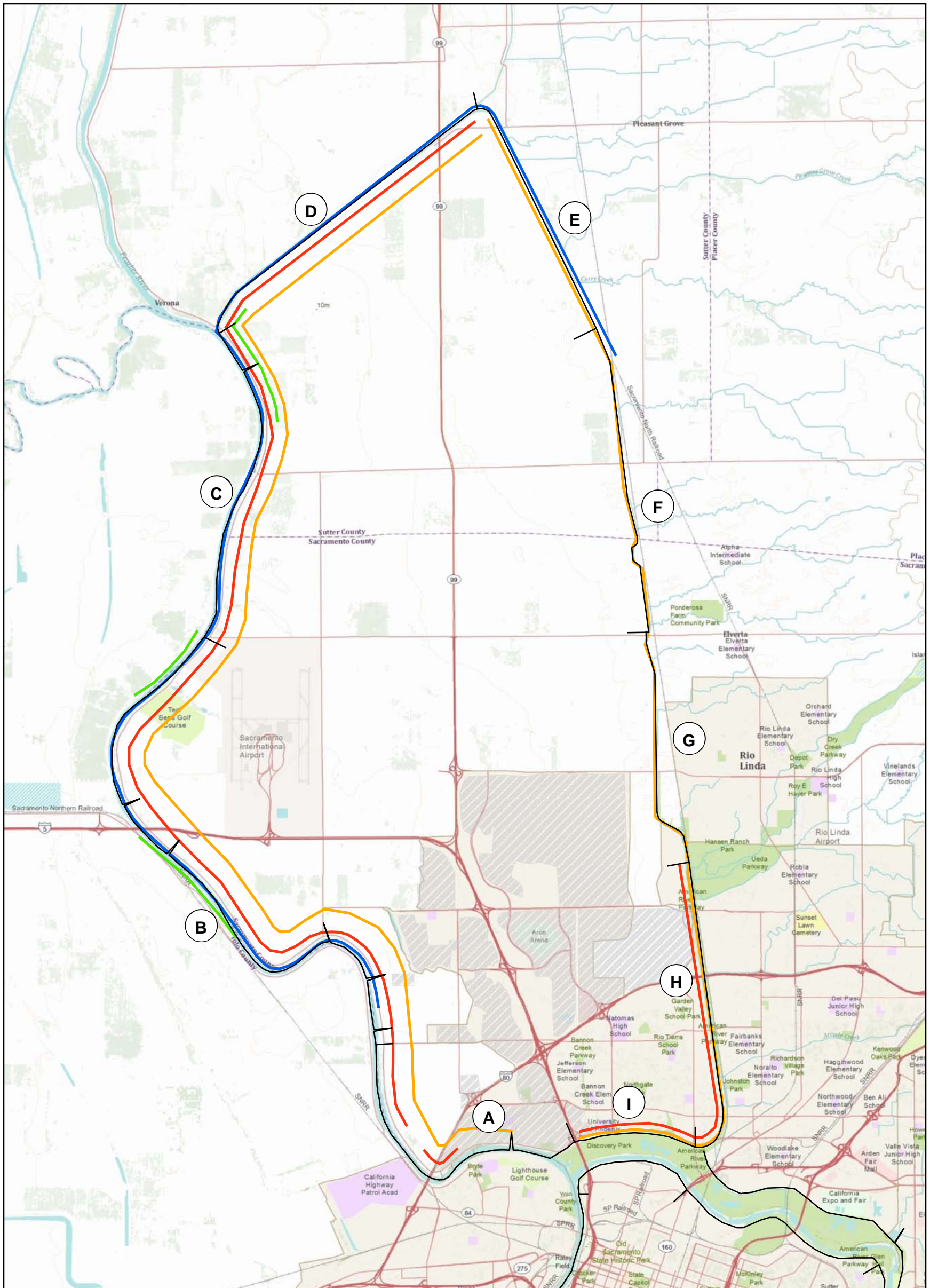


American River Common Features Project, Natomas Post-Authorization Change Report

Note: Not to Scale
 June 2010



Plate 6
 SAFCA Construction Phasing



American River Common Features Project, Natomas Post-Authorization Change Report



0 0.5 1 1.5 Miles

July 2010



US Army Corps of Engineers



Plate 7
Natromas Basin

Legend

— Reaches (A)

Levee Distress

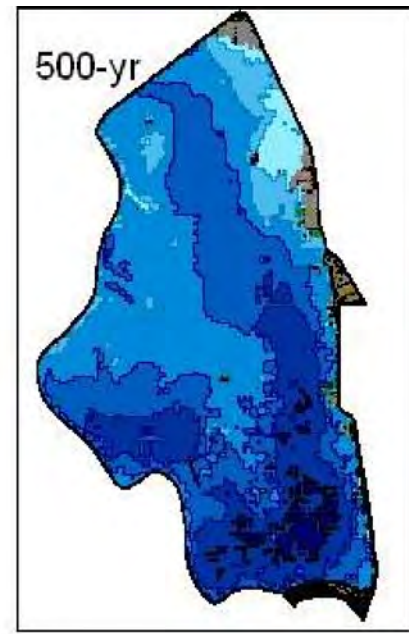
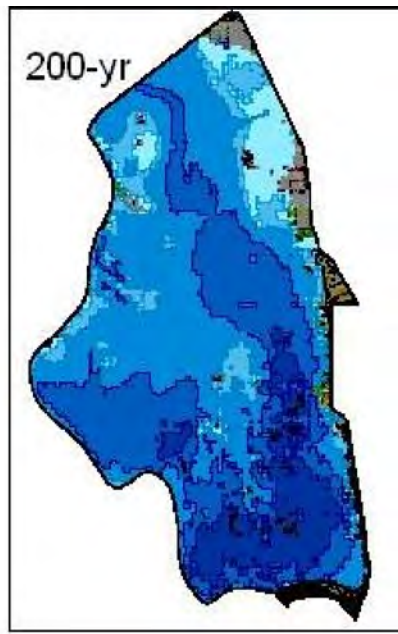
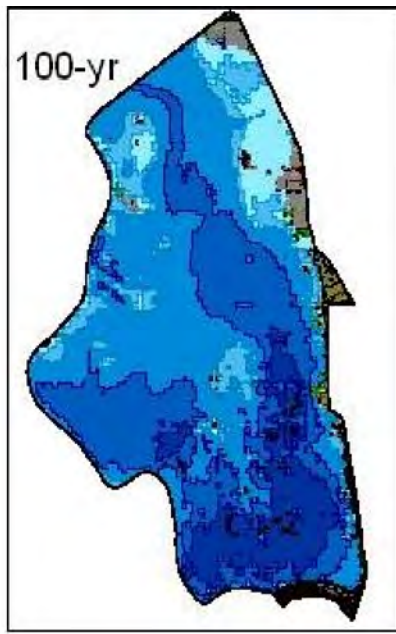
— Seepage

— Stability

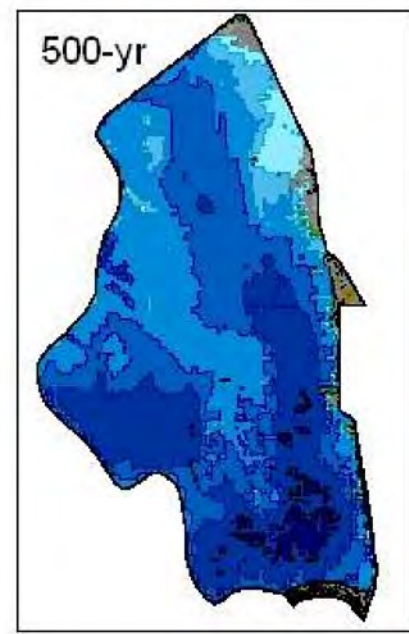
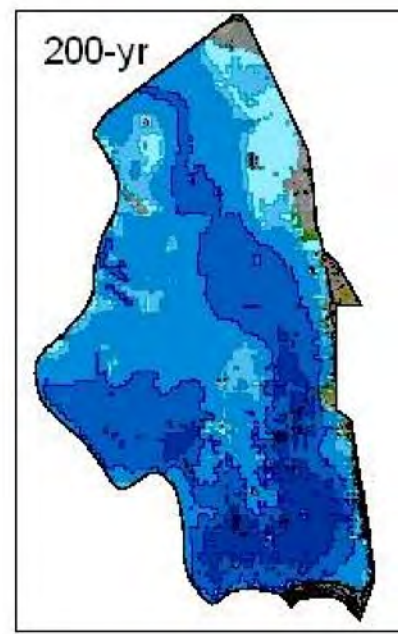
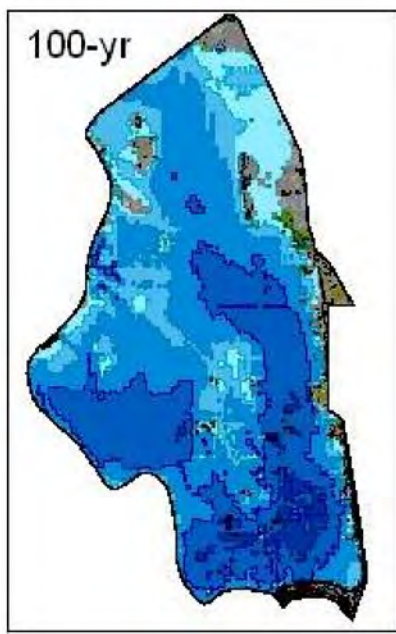
— Erosion

— Height Deficiency

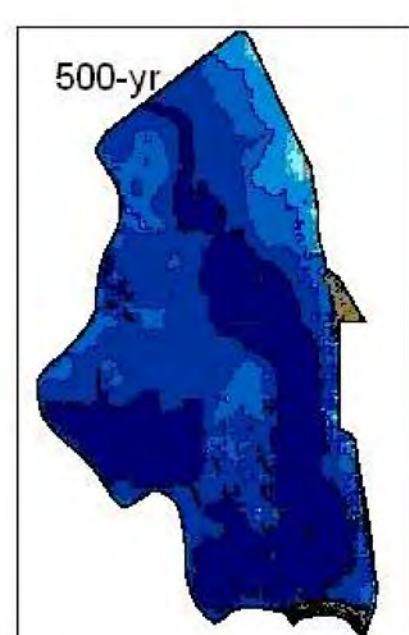
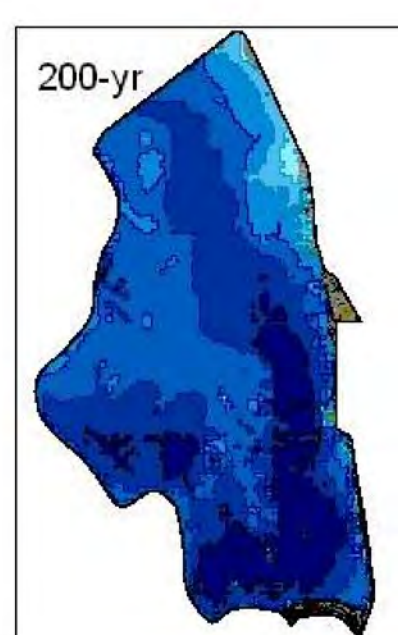
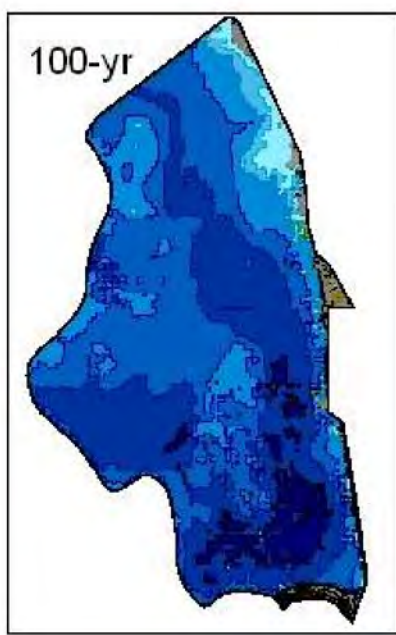
▨ New Urban Development



Floodplains for break at Reach A



Floodplains for break at Reach B



Floodplains for break at Reach C

American River Common Features Project, Natomas Post-Authorization Change Report



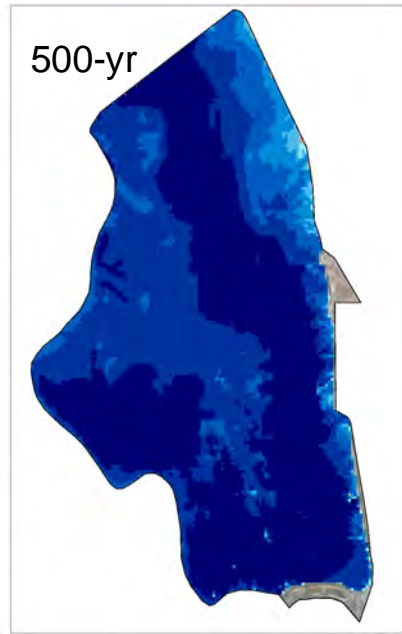
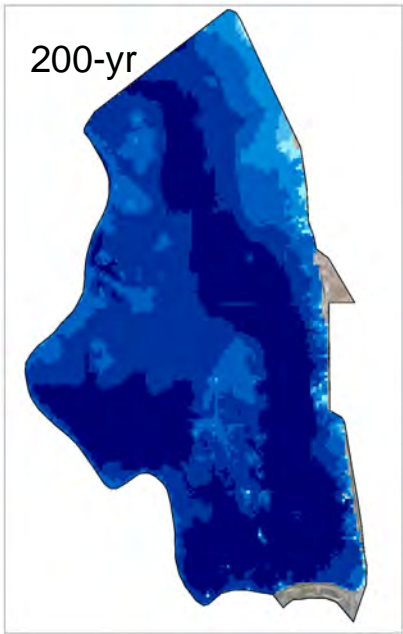
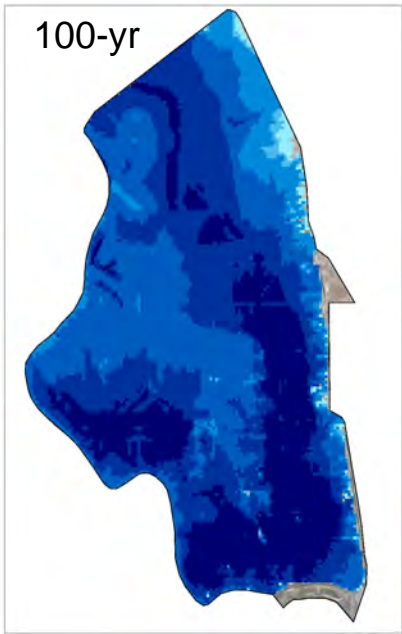
June 2010



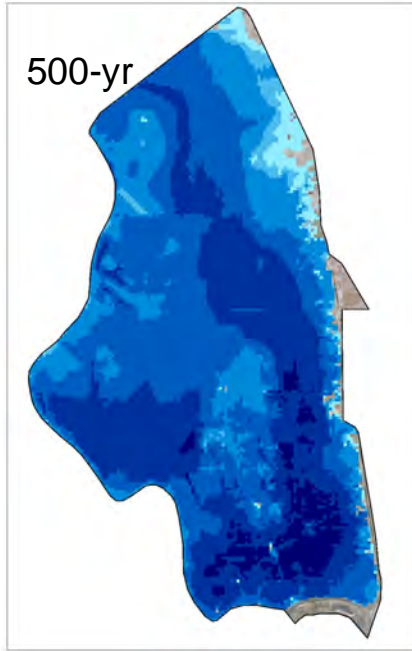
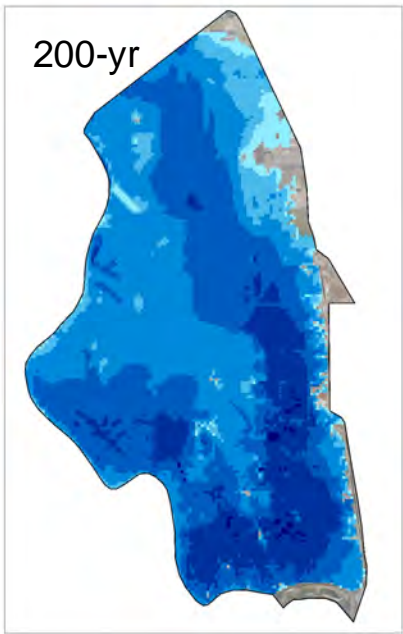
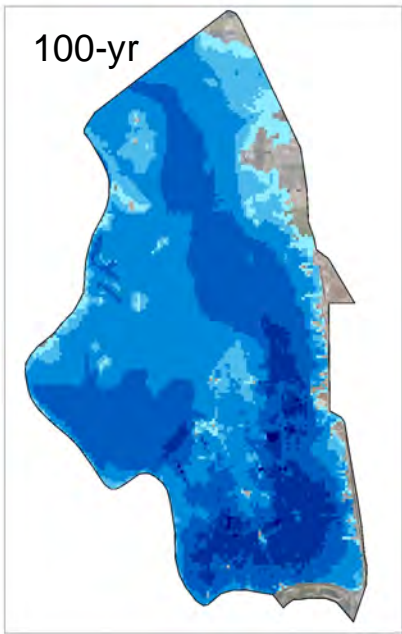
US Army Corps of Engineers



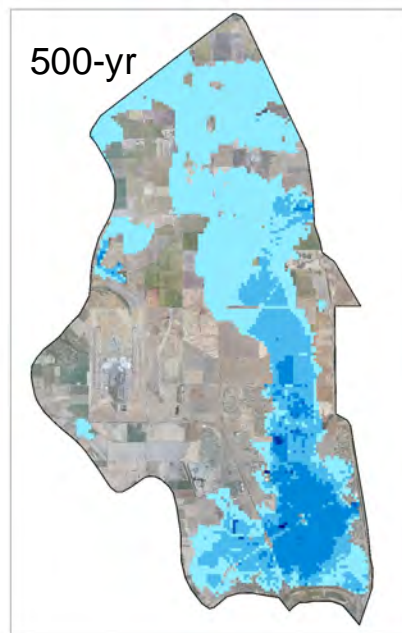
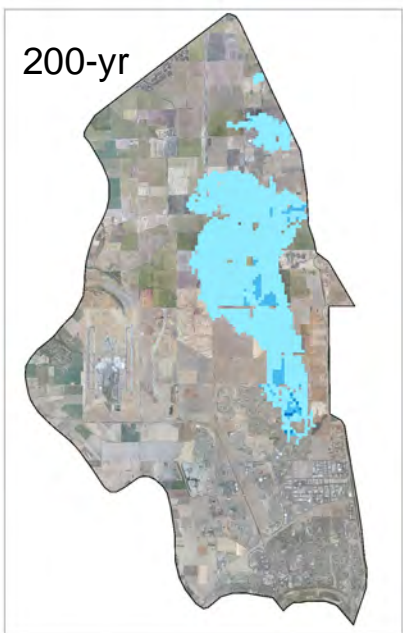
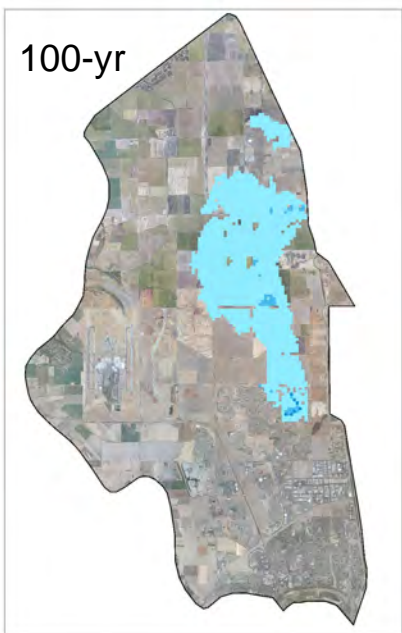
Plate 8
Natomas Flood Plains
Reaches A, B and C



Floodplains for break at Reach D



Floodplains for break at Reach E



Floodplains for break at Reach F

American River Common Features Project, Natomas Post-Authorization Change Report



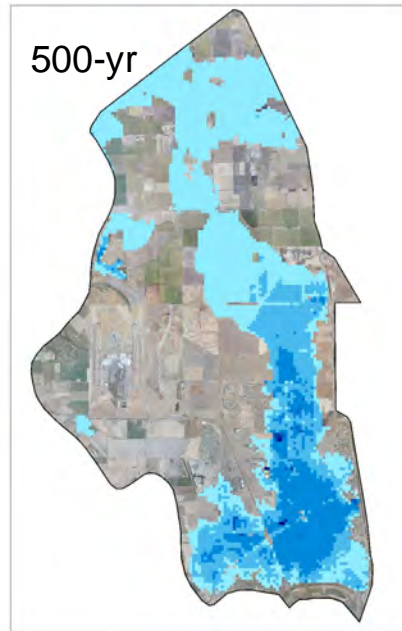
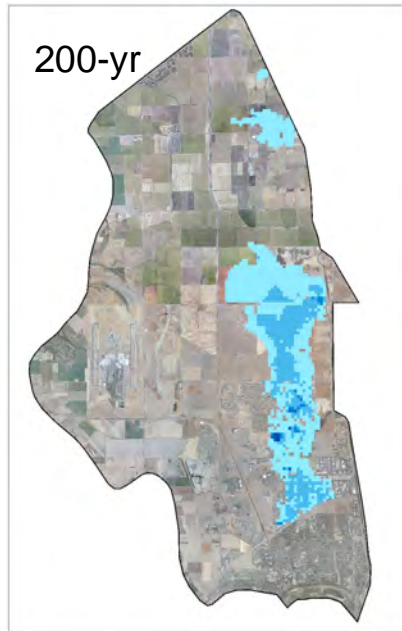
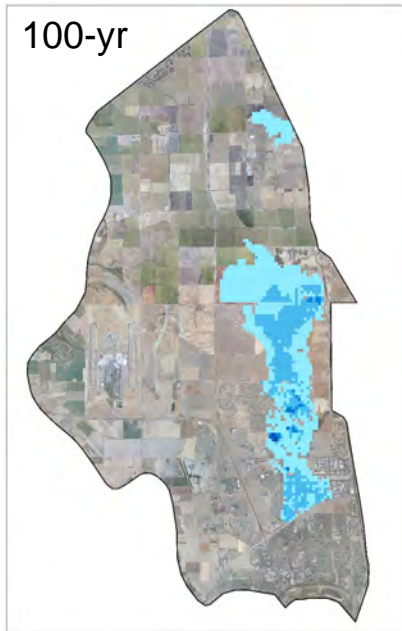
June 2010



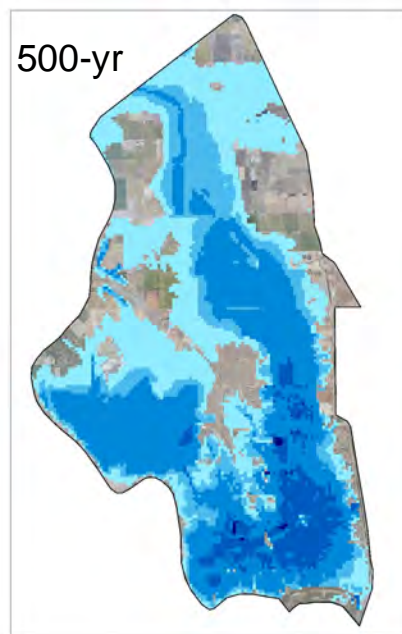
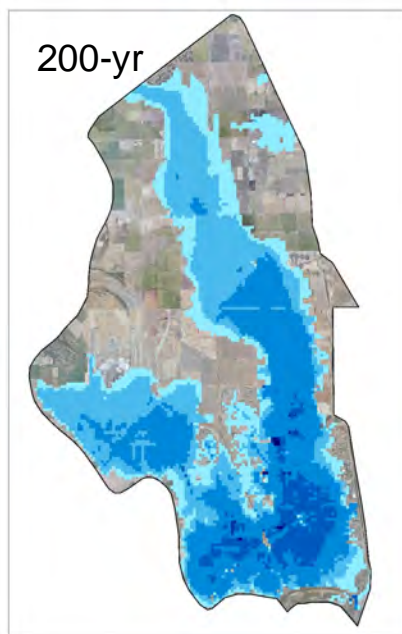
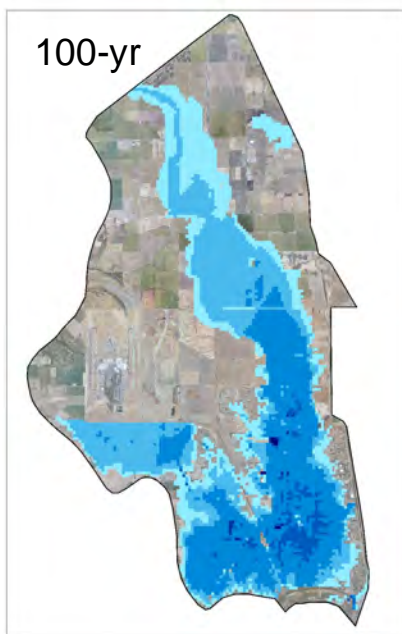
US Army Corps of Engineers



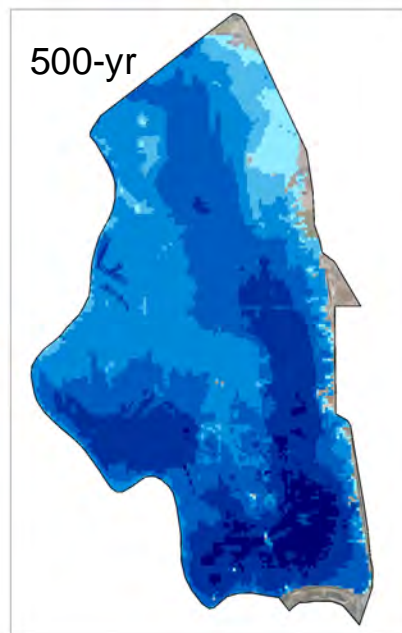
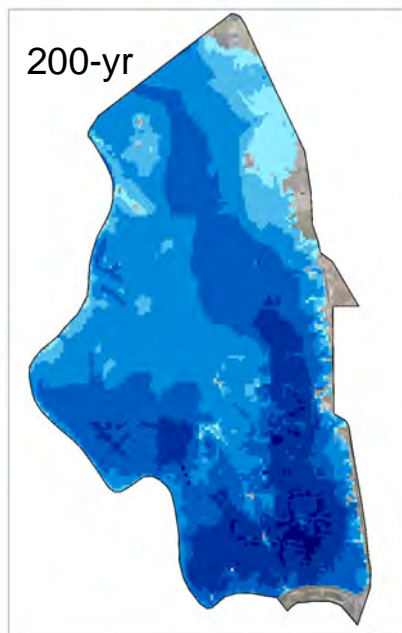
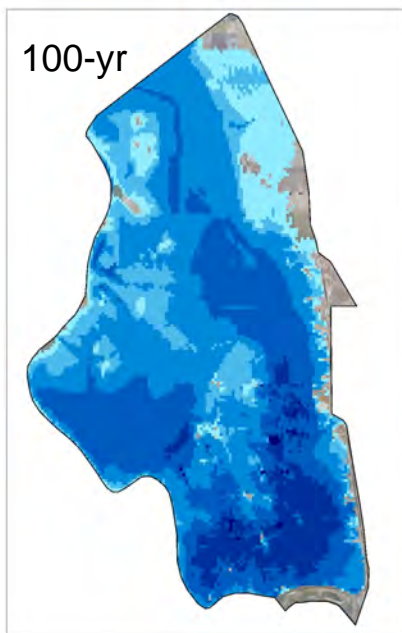
Plate 9
Natomas Flood Plains
Reaches D, E and F



Floodplains for break at Reach G



Floodplains for break at Reach H



Floodplains for break at Reach I

American River Common Features Project, Natomas Post-Authorization Change Report



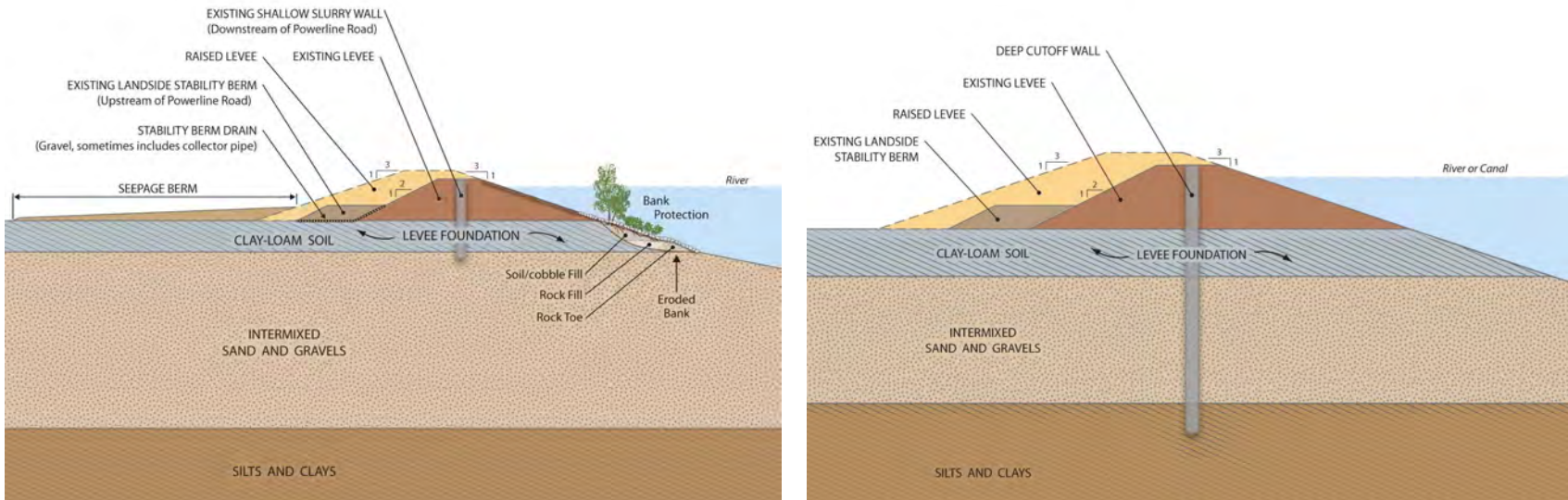
June 2010



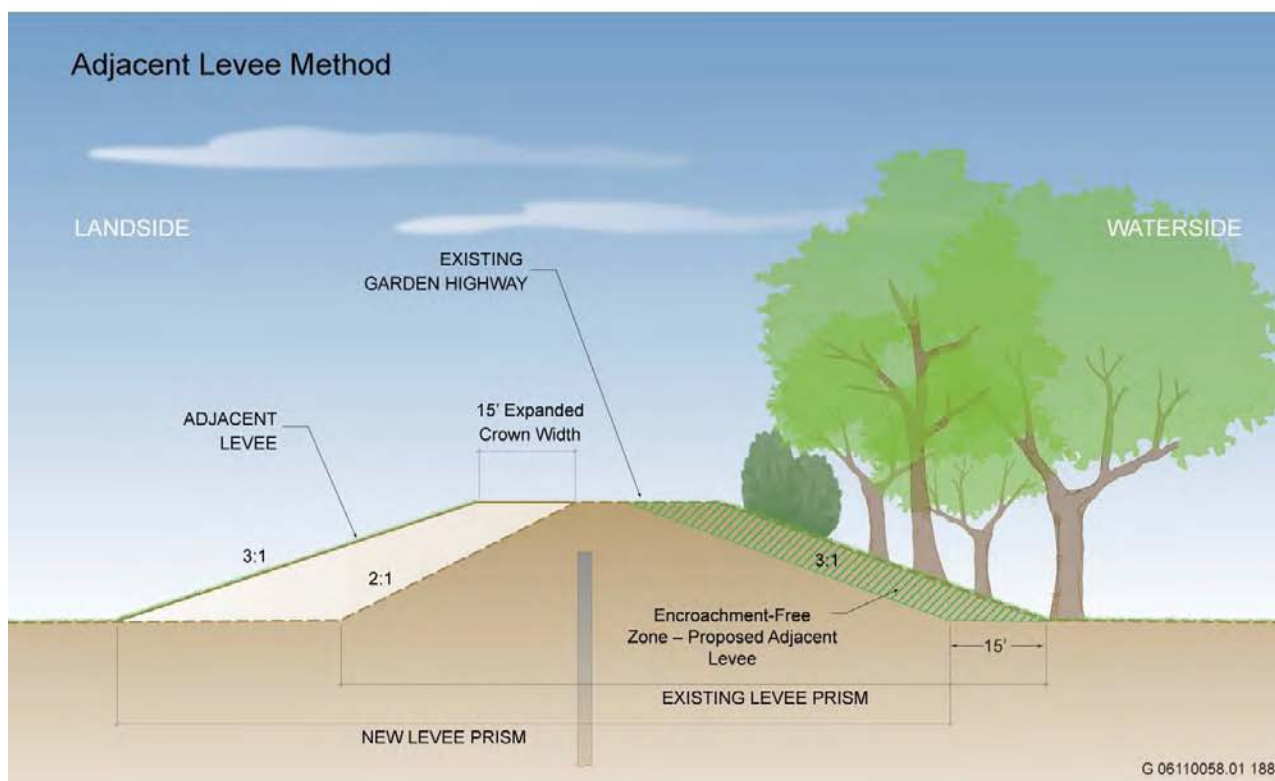
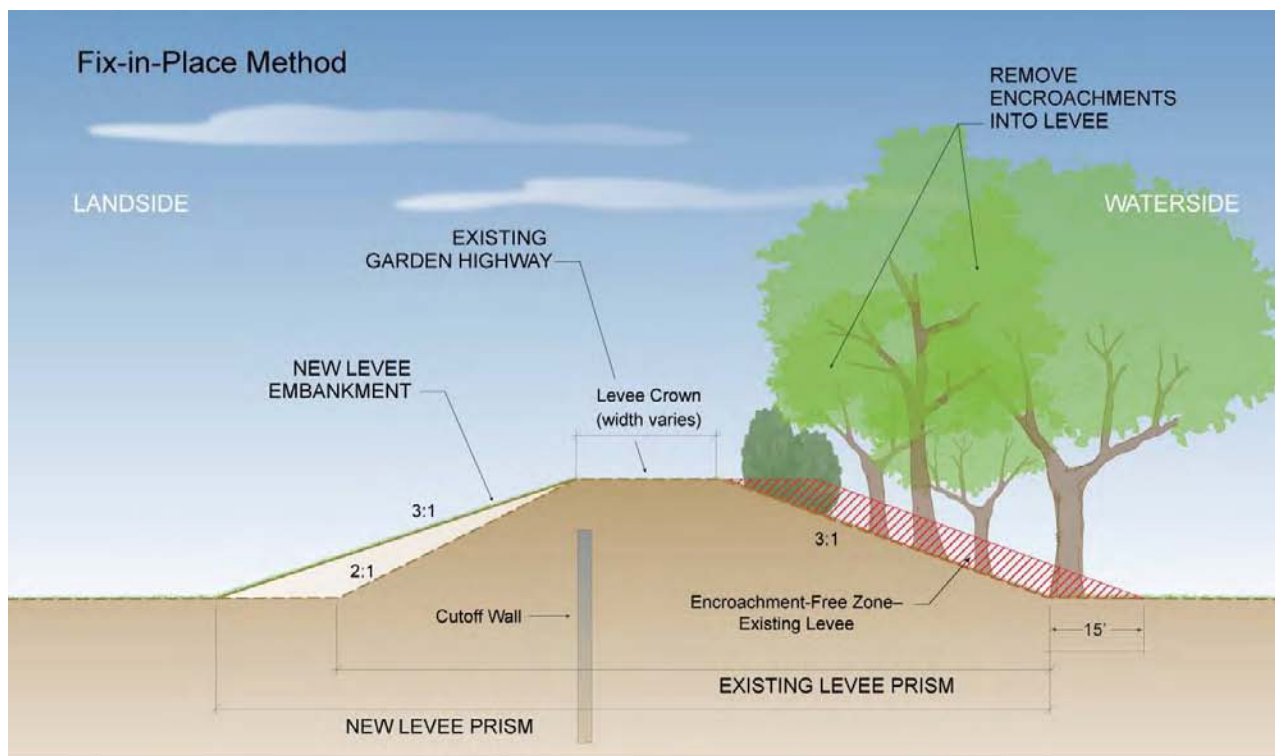
US Army Corps of Engineers



Plate 10
Natomas Flood Plains
Reaches G, H and I



Typical Seepage Remediation Measures



Levee Repair Measures

American River Common Features Project, Natomas Post-Authorization Change Report

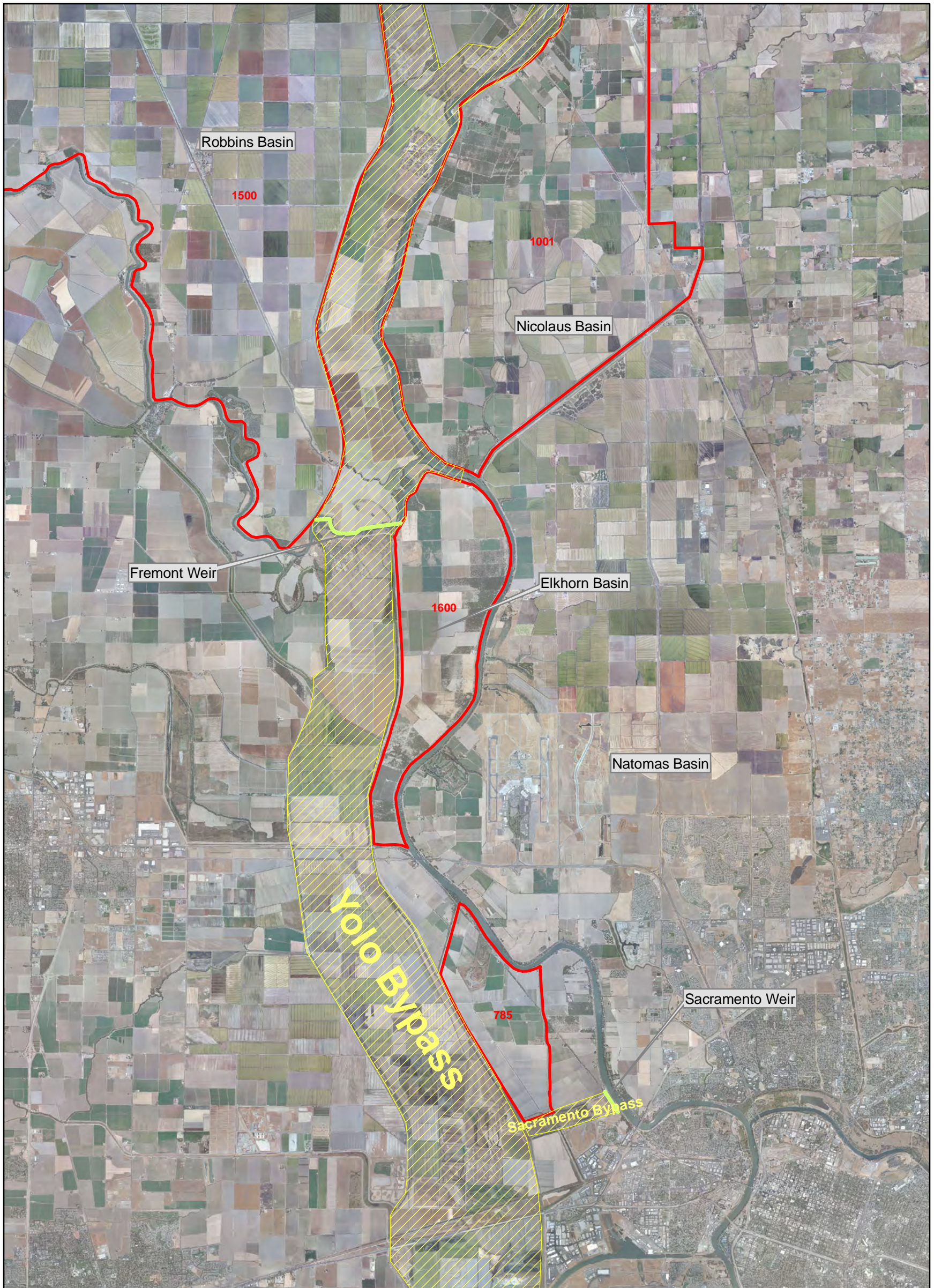


US Army Corps of Engineers

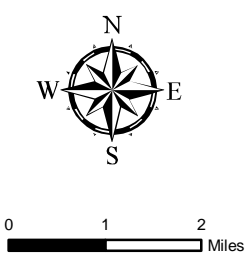


Plate 11
Levee Remediation Alternatives

June 2010



American River Common Features Project, Natomas Post-Authorization Change Report



June 2010

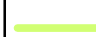




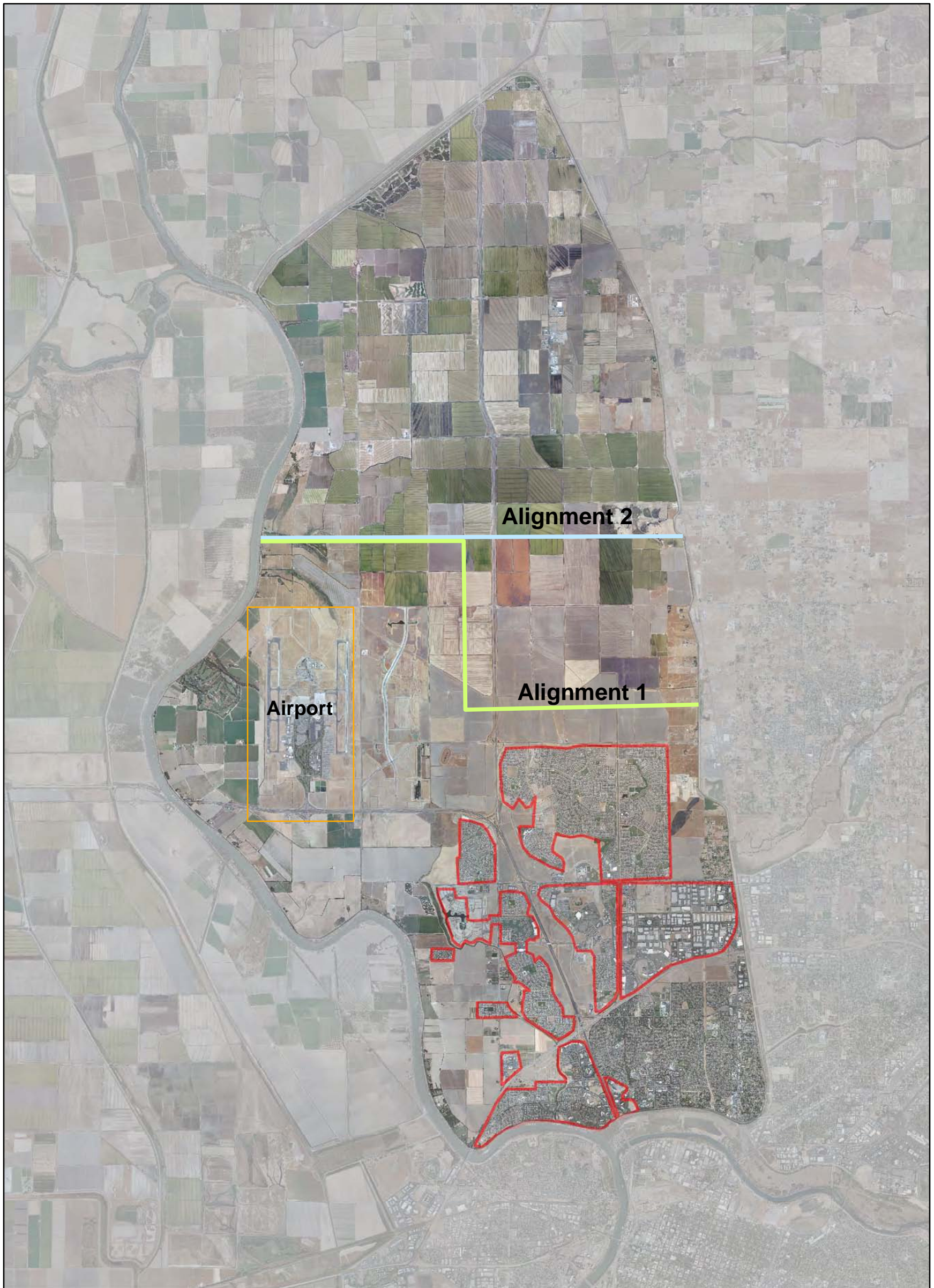
US Army Corps of Engineers



Plate 12
Transitory Storage Alternatives

Legend

-  Weirs
-  Sac Area Bypasses
-  Reclamation Districts



American River Common Features Project, Natomas Post-Authorization Change Report



0 0.75 1.5 Miles

June 2010







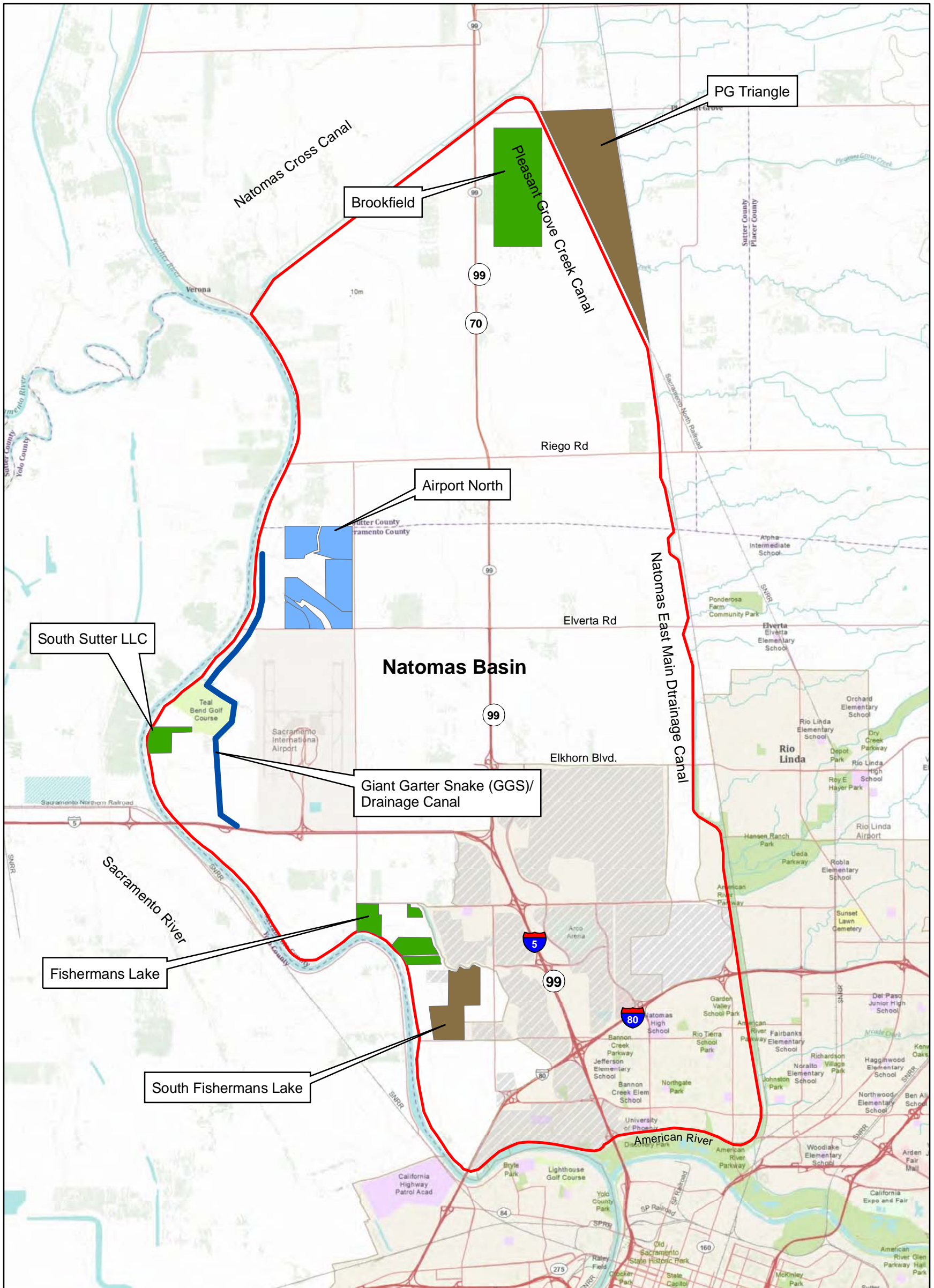
US Army Corps of Engineers



Plate 13
Cross-Natomas Levee Alignments

Legend

-  Natomas Cross Levee Alignment 1
-  Natomas Cross Levee Alignment 2
-  New Urban Development
-  Sacramento Airport



American River Common Features Project, Natomas Post-Authorization Change Report



0 0.75 1.5 Miles

June 2010



US Army Corps of Engineers



Plate 14
Borrow Sites

Legend

- Acquisition of Surface Mining Rights
- Borrow Sites not used for Mitigation
- Borrow Sites, used for Mitigation
- Natomas Basin Boundary
- New Urban Development