

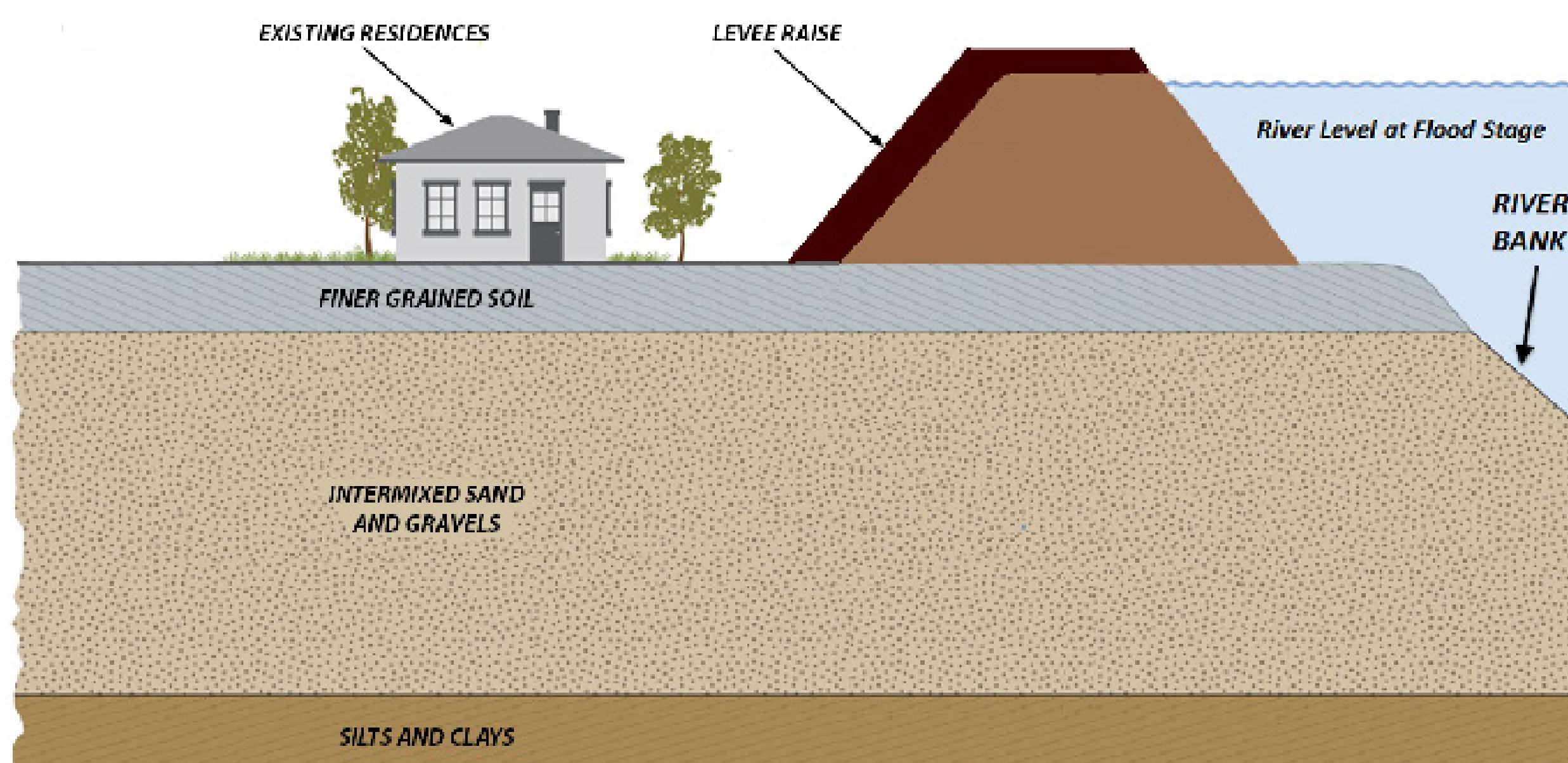
Height Addressed: Bypass vs. Levee Raise

In order to convey a flood event with an annual chance of exceedance of 1 in 200, the Sacramento River downstream of the American River requires either eight miles of levee to be raised or a combination of conveyance improvements with less than one mile of levee raising.

Alternative 1 (NED plan) shows approximately 8 miles of levee raises.

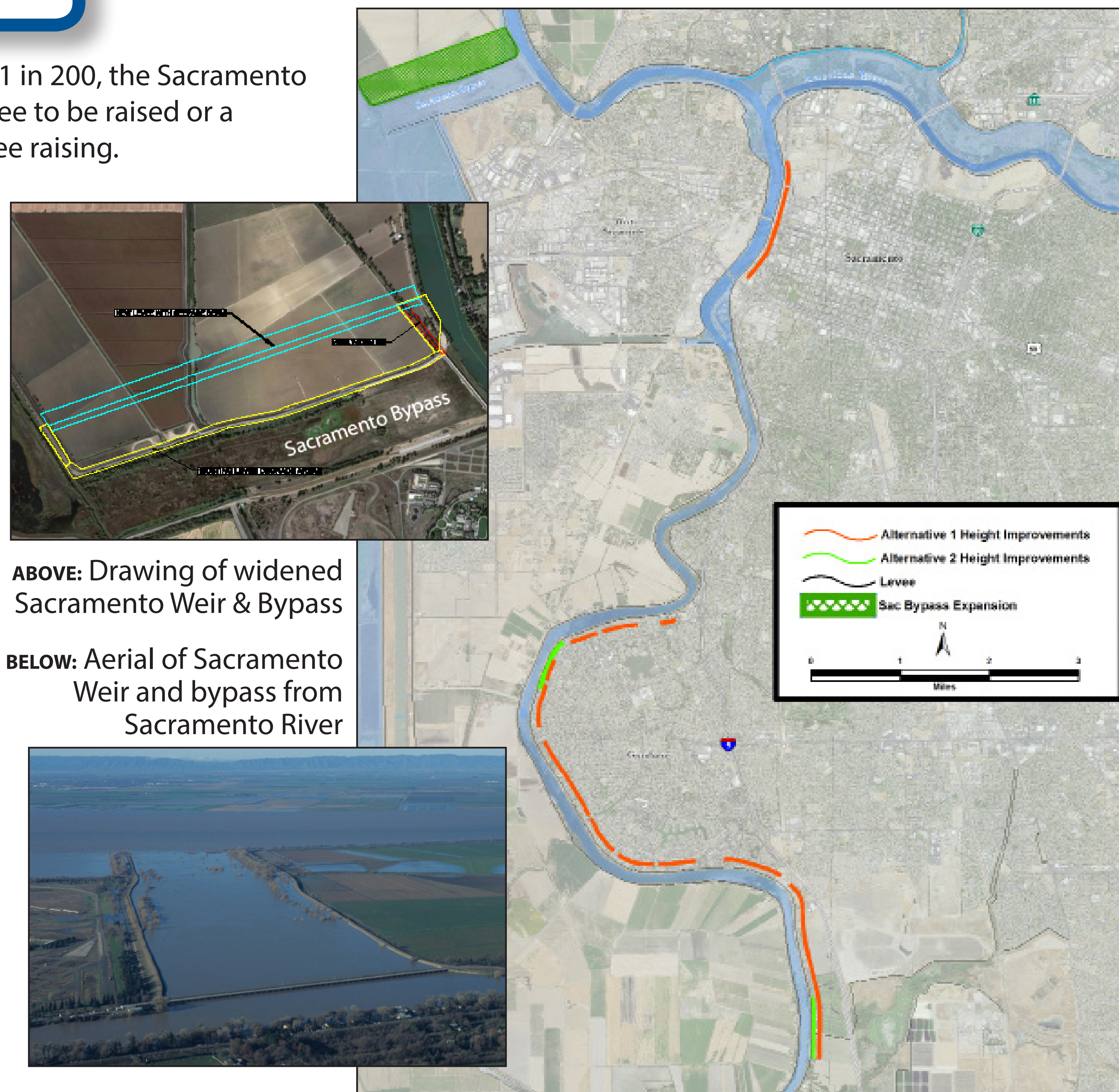
Alternative 2 (recommended plan) relies upon widening the Sacramento Weir and Bypass, reducing the need to raise the levees identified in the NED plan. Less than one mile of levee raising would still be necessary.

Alternative 2 is recommended because it requires less raise construction and improves the operational flexibility provided by widening the Sacramento Weir and Bypass.



Levee Height:

Primarily addressed by raising levee with soil or constructing a floodwall on top of levee. In some cases, the need to increase levee height can be reduced by diverting flow away from the river such as by widening Sacramento Weir & Bypass.



ABOVE: Drawing of widened Sacramento Weir & Bypass

BELOW: Aerial of Sacramento Weir and bypass from Sacramento River