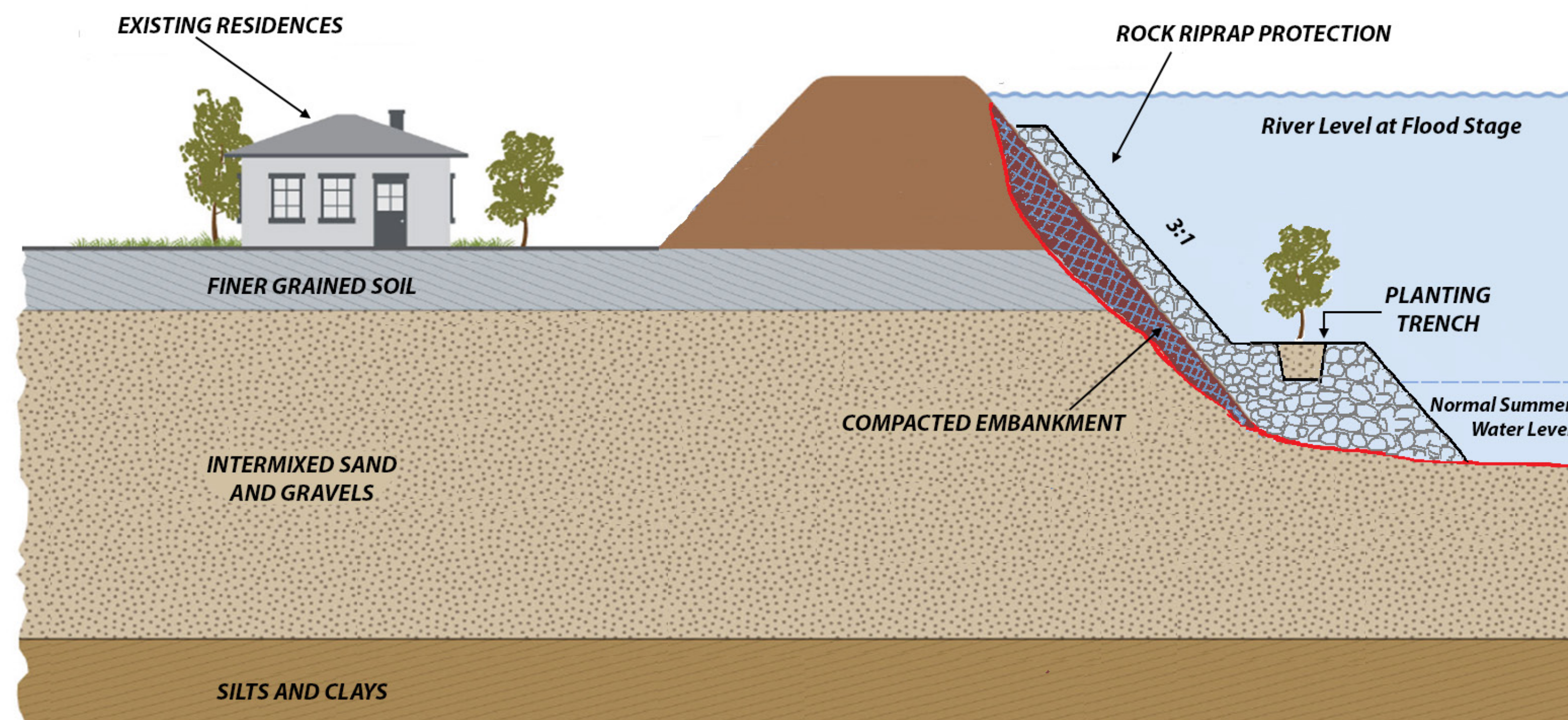


# Erosion Addressed

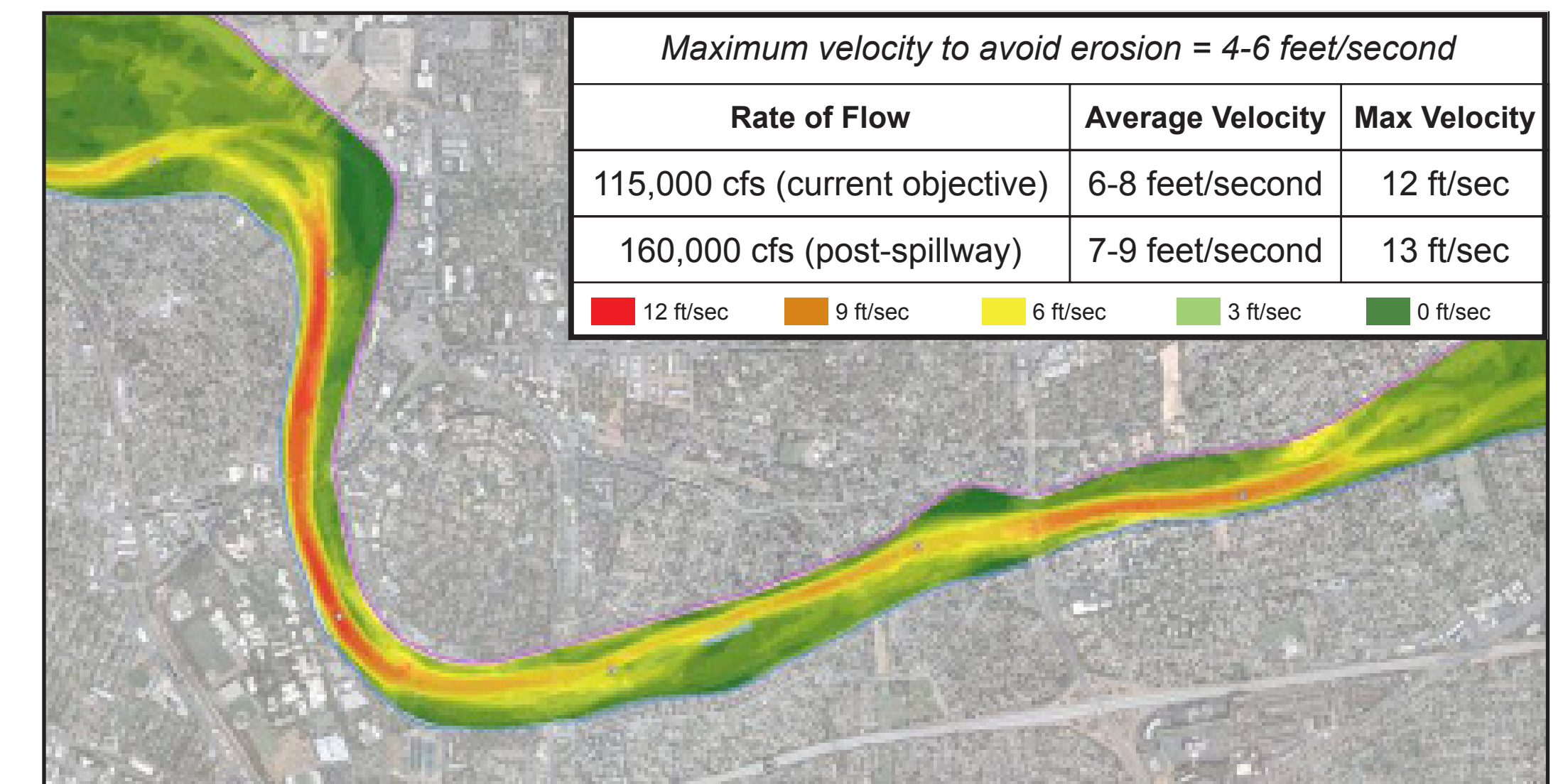


## Levee Erosion:

Primarily addressed by placing rock riprap revetment either on channel bank or at toe of levee. Construction from barge preferred, where practical.

## Velocity:

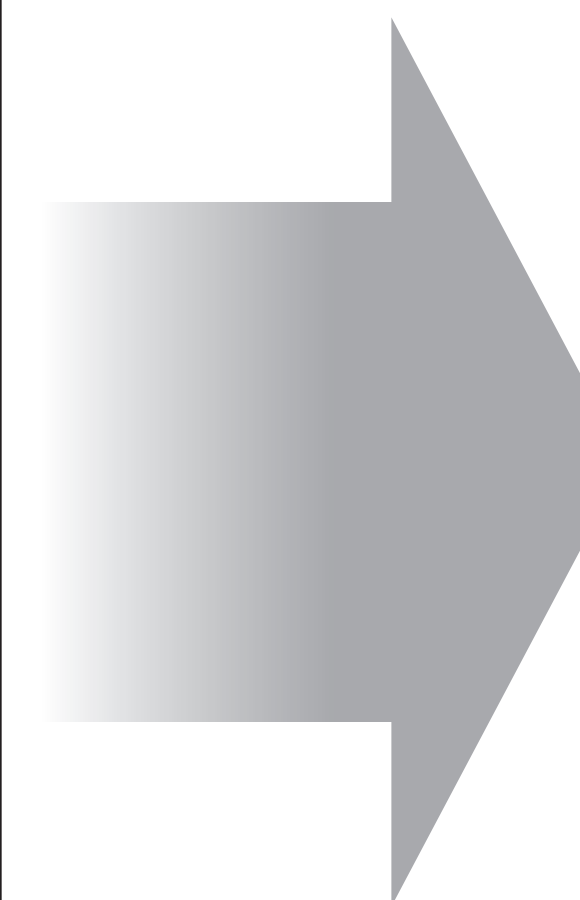
Levees were historically constructed from highly erodible mining deposits and sands, close to the main channel so more land was available for urban development. The American River downstream of Folsom Dam is very steep, creating faster, stronger stream flows confined between levees that could promote erosion. History shows that a levee can fail because of erosion on American River, and Sacramento will experience significant flood risk reduction when the issue is addressed.



Typical bank protection placing rock riprap revetment from barge



Typical bank protection as constructed at Lower American River Site 4 between Guy West bridge and H Street Bridge in 2001



Lower American River Site 4 in 2010